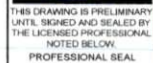


10	H	G	F	E	D	C	B	A
9	 <p>DOCUMENTS DESIGNED AND DRAWN TO MEET THE 2021 BUILDING CODE OF ALABAMA (2021 IBC)</p>	 <p>DOCUMENTS DESIGNED AND DRAWN TO MEET THE 2018 BUILDING CODE OF North Carolina (2018 IBC)</p>	 <p>DOCUMENTS DESIGNED AND DRAWN TO MEET THE 2021 IBC</p>	 <p>DOCUMENTS DESIGNED AND DRAWN TO MEET THE 2018 IBC</p>	 <p>DOCUMENTS DESIGNED AND DRAWN TO MEET THE 2018 IBC</p>	 <p>THIS DRAWING IS PRELIMINARY UNTIL SIGNED AND SEALED BY THE LICENSED PROFESSIONAL ENGINEER NOTED BELOW.</p>		
8								
7	 <p>DOCUMENTS DESIGNED AND DRAWN TO MEET THE 2018 KENTUCKY BUILDING CODE (2015 IBC)</p>	 <p>DOCUMENTS DESIGNED AND DRAWN TO MEET THE 2018 IBC</p>	 <p>DOCUMENTS DESIGNED AND DRAWN TO MEET THE 2021 IBC</p>	 <p>DOCUMENTS DESIGNED AND DRAWN TO MEET THE 2021 BUILDING CODE OF NEW JERSEY (2021 IBC)</p>	 <p>DOCUMENTS DESIGNED AND DRAWN TO MEET THE 2018 IBC</p>	 <p>DESIGN PROFESSIONAL DOTec Engineering 118 N 2nd St. St. Charles, MO 63301 Ph 636-724-9872 Fx 636-385-5059 WWW.DOTTECHENGINEERING.COM INFO@DOTTECHENGINEERING.COM</p>		
6								
5								
4	 <p>DOCUMENTS DESIGNED AND DRAWN TO MEET THE 2021 IBC</p>	 <p>DOCUMENTS DESIGNED AND DRAWN TO MEET THE 2018 IBC</p>	 <p>DOCUMENTS DESIGNED AND DRAWN TO MEET THE 2018 IBC</p>	 <p>DOCUMENTS DESIGNED AND DRAWN TO MEET THE 2021 BUILDING CODE OF MARYLAND (2021 IBC)</p>	 <p>DOCUMENTS DESIGNED AND DRAWN TO MEET THE 2018 IBC</p>	 <p>Sealing</p>		
3								
2	 <p>DOCUMENTS DESIGNED AND DRAWN TO MEET THE 2021 BUILDING CODE OF LOUISIANA (2021 IBC)</p>	 <p>DOCUMENTS DESIGNED AND DRAWN TO MEET THE 2021 BUILDING CODE OF TEXAS (2021 IBC)</p>	 <p>DOCUMENTS DESIGNED AND DRAWN TO MEET THE BUILDING CODE OF INDIANA (2012 IBC)</p>					
1								
0								

NOTE: THIS DRAWINGS ARE VALID FOR (1) CALENDER YEAR AFTER THE ISSUE DATE LISTED ON THE SHEET.

SHEET NUMBER	SHEET TITLE
S.0	COVER PAGE
S.1	SEALED SHEET
S.2	DRAWING INDEX
S.3	GENERAL NOTES & SPECIFICATIONS
S.4	ELEVATIONS & SECTION
S.4A	ELEVATIONS & SECTION
S.4B	ELEVATIONS & SECTION
S.4C	ELEVATIONS & SECTION
S.5	TYPICAL SECTIONS
S.5A	TYPICAL SECTIONS
S.5B	TYPICAL SECTIONS
S.5C	TYPICAL SECTIONS
S.6	BOX EAVE / CORNER POST CONNECT
S.7	FOUNDATION DETAILS
S.8	FOUNDATION DETAILS
S.9	FOUNDATION DETAILS
S.10	FOUNDATION DETAILS
S.11	BOX EVE RAFTER END WALL AND SID
S.12	DETAILS
S.13	DETAILS
S.14	BOX EVE RAFTER LEAN-TO OPTIONS
S.15	DETAILS
S.16	VERTICAL ROOF / SIDING OPTION
S.17	DETAILS



The 12,000-ton ship, which is the largest ever built in the United States, is being built by the shipyard in a record 18 months. The ship is being built for the U.S. Navy and is expected to be delivered in 1991. The ship is being built for the U.S. Navy and is expected to be delivered in 1991. The ship is being built for the U.S. Navy and is expected to be delivered in 1991.

[illegible]

THE SHORTEST TRIP Among these plans will not be the shortest trip. For many people, the shortest trip is the one in which they do not leave home. All citizens to the plan will be required to be in the shortest trip. All citizens to the plan will be required to be in the shortest trip.

[illegible][illegible]

Sheet Index

ISSUE DATE	04/15/2025
------------	------------

HIGH QUALITY STEEL STRUCTURES

2267 N Andy Griffith Parkway,
Mt Airy, NC 27030

CLIENT	HIGH	ADDRESS
--------	------	---------

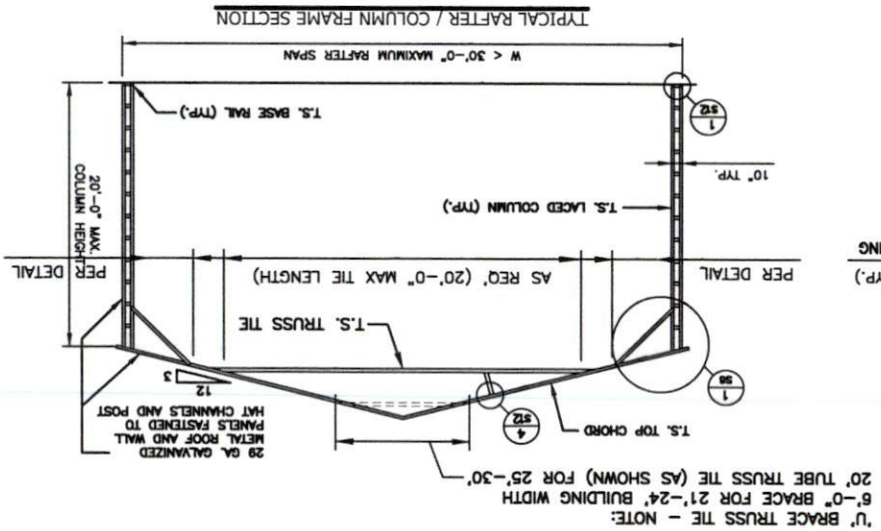
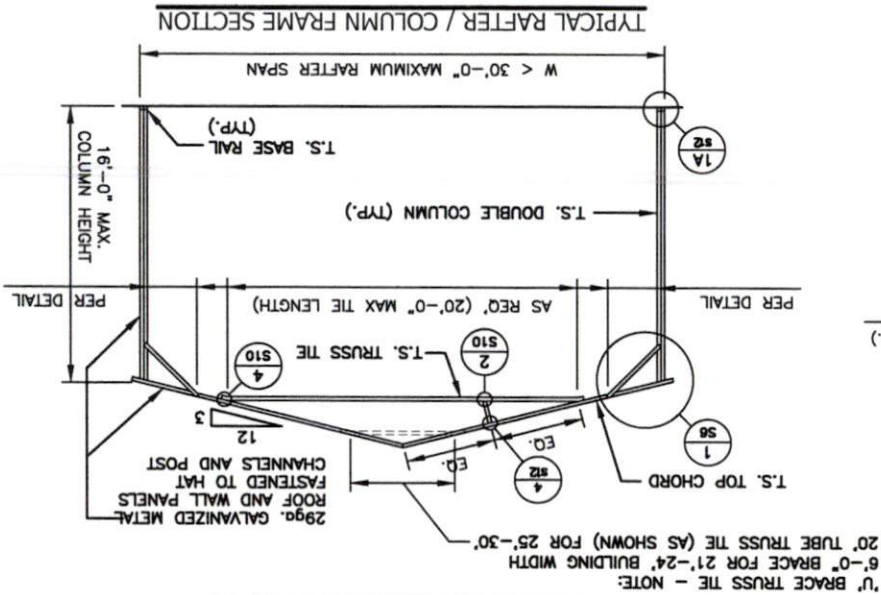
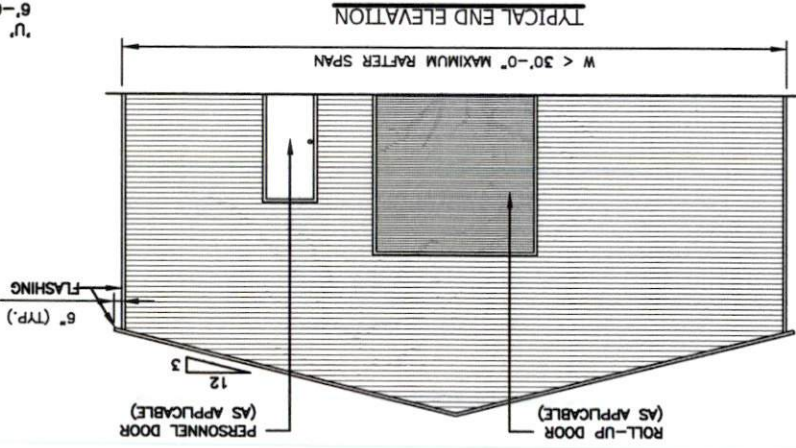
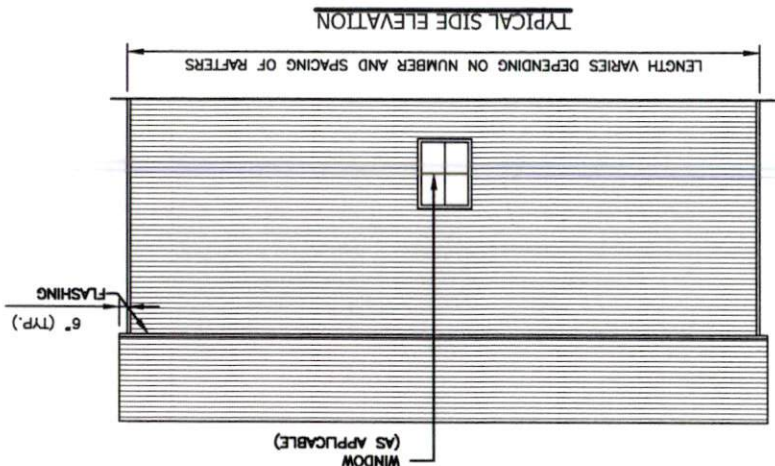
S2

PROJECT NUMBER: #82504027

DRAWN BY:	HMO
CHECKED BY:	MRZ

NOTE: THIS DRAWINGS ARE VALID FOR (1) CALENDER YEAR AFTER THE ISSUE DATE LISTED ON THE SHEET.

NOTE: THIS DRAWINGS ARE VALID FOR (1) CALENDER YEAR AFTER THE ISSUE DATE LISTED ON THE SHEET.



PROJECT NUMBER: 2267 N Andy Griffin Parkway, Mt Airy, NC 27030

CLIENT: HIGH QUALITY STEEL STRUCTURES

DESIGN PROFESSIONAL: DO'lec Engineering, 118 N 2nd St, St Charles, MO 63301, PH 636-724-8872, FX 636-585-5059, WWW.DOLECTENGINEERING.COM

PROFESSIONAL SEAL: NOTED BELOW

THIS DRAWING IS PRELIMINARY UNTIL SIGNED AND SEALED BY THE LICENSED PROFESSIONAL

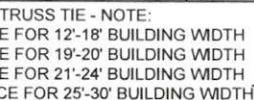




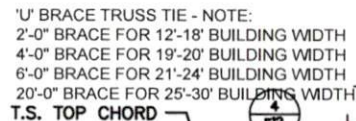
TYPICAL END ELEVATION



TYPICAL SIDE ELEVATION



TYPICAL RAFTER / COLUMN FRAME SECTION



TYPICAL RAFTER / COLUMN FRAME SECTION

NOTE: THIS DRAWINGS ARE VALID FOR (1) CALENDER YEAR AFTER THE ISSUE DATE LISTED ON THE SHEET.



THIS DRAWING IS PRELIMINARY
UNTIL SIGNED AND SEALED BY
THE LICENSED PROFESSIONAL
NOTED BELOW.
PROFESSIONAL SEAL

DESIGN PROFESSIONAL
DOTec Engineering
118 N 2nd St,
St. Charles, MO 63301
Ph 636-724-9872
Fx 636-385-5059
WWW.DOTECENGINEERING.COM
INFO@DOTECENGINEERING.COM

THE UNIVERSITY OF CHICAGO, CHICAGO, ILL. 60637, U.S.A. (Received 10 October 1983)

[illegible]

THEY ASKED THE PROHIBITION SHALL NOT BE FOR CONSTRUCTION WORK, UTILITIES, MATERIALS TRANSPORTATION, OR UNLOADING OF MATERIALS. IN THE LATE 1970S THE CITY OF LOS ANGELES COMPLETED THE BRIDGE. THE PROHIBITION SHALL NOT BE ENFORCED FOR THE BRIDGE. THE PROHIBITION SHALL NOT BE ENFORCED FOR THE BRIDGE. THE PROHIBITION SHALL NOT BE ENFORCED FOR THE BRIDGE.

UNAUTHORIZED CHANGES & FEES
CAUTION:
 THE CHARGED PROGRAMMER THEREAFTER WILL NOT BE RESPONSIBLE FOR OR LIABLE FOR UNAUTHORIZED CHANGES TO OR VIOLATION OF THESE PLANS. ALL CHARGES TO THE PLANS MUST BE SUBMITTED IN WRITING TO THE PROGRAMMER OF THESE PLANS.

and treatment of women
These comments and recommendations of women and men in
the study of 2011-2012 (2012-2013) and 2013-2014 (2014-2015)
were used to develop the 2015-2016 (2016-2017) and 2017-2018
(2018-2019) studies. The 2015-2016 (2016-2017) and 2017-2018
(2018-2019) studies were conducted in 2015-2016 (2016-2017) and 2017-2018
(2018-2019) respectively.

1	2	3	4	5	6	7	8	9	10	11	12	13	14	15	16	17	18	19	20	21	22	23	24	25	26	27	28	29	30	31	32	33	34	35	36	37	38	39	40	41	42	43	44	45	46	47	48	49	50	51	52	53	54	55	56	57	58	59	60	61	62	63	64	65	66	67	68	69	70	71	72	73	74	75	76	77	78	79	80	81	82	83	84	85	86	87	88	89	90	91	92	93	94	95	96	97	98	99	100	101	102	103	104	105	106	107	108	109	110	111	112	113	114	115	116	117	118	119	120	121	122	123	124	125	126	127	128	129	130	131	132	133	134	135	136	137	138	139	140	141	142	143	144	145	146	147	148	149	150	151	152	153	154	155	156	157	158	159	160	161	162	163	164	165	166	167	168	169	170	171	172	173	174	175	176	177	178	179	180	181	182	183	184	185	186	187	188	189	190	191	192	193	194	195	196	197	198	199	200	201	202	203	204	205	206	207	208	209	210	211	212	213	214	215	216	217	218	219	220	221	222	223	224	225	226	227	228	229	230	231	232	233	234	235	236	237	238	239	240	241	242	243	244	245	246	247	248	249	250	251	252	253	254	255	256	257	258	259	260	261	262	263	264	265	266	267	268	269	270	271	272	273	274	275	276	277	278	279	280	281	282	283	284	285	286	287	288	289	290	291	292	293	294	295	296	297	298	299	300	301	302	303	304	305	306	307	308	309	310	311	312	313	314	315	316	317	318	319	320	321	322	323	324	325	326	327	328	329	330	331	332	333	334	335	336	337	338	339	340	341	342	343	344	345	346	347	348	349	350	351	352	353	354	355	356	357	358	359	360	361	362	363	364	365	366	367	368	369	370	371	372	373	374	375	376	377	378	379	380	381	382	383	384	385	386	387	388	389	390	391	392	393	394	395	396	397	398	399	400	401	402	403	404	405	406	407	408	409	410	411	412	413	414	415	416	417	418	419	420	421	422	423	424	425	426	427	428	429	430	431	432	433	434	435	436	437	438	439	440	441	442	443	444	445	446	447	448	449	450	451	452	453	454	455	456	457	458	459	460	461	462	463	464	465	466
---	---	---	---	---	---	---	---	---	----	----	----	----	----	----	----	----	----	----	----	----	----	----	----	----	----	----	----	----	----	----	----	----	----	----	----	----	----	----	----	----	----	----	----	----	----	----	----	----	----	----	----	----	----	----	----	----	----	----	----	----	----	----	----	----	----	----	----	----	----	----	----	----	----	----	----	----	----	----	----	----	----	----	----	----	----	----	----	----	----	----	----	----	----	----	----	----	----	----	-----	-----	-----	-----	-----	-----	-----	-----	-----	-----	-----	-----	-----	-----	-----	-----	-----	-----	-----	-----	-----	-----	-----	-----	-----	-----	-----	-----	-----	-----	-----	-----	-----	-----	-----	-----	-----	-----	-----	-----	-----	-----	-----	-----	-----	-----	-----	-----	-----	-----	-----	-----	-----	-----	-----	-----	-----	-----	-----	-----	-----	-----	-----	-----	-----	-----	-----	-----	-----	-----	-----	-----	-----	-----	-----	-----	-----	-----	-----	-----	-----	-----	-----	-----	-----	-----	-----	-----	-----	-----	-----	-----	-----	-----	-----	-----	-----	-----	-----	-----	-----	-----	-----	-----	-----	-----	-----	-----	-----	-----	-----	-----	-----	-----	-----	-----	-----	-----	-----	-----	-----	-----	-----	-----	-----	-----	-----	-----	-----	-----	-----	-----	-----	-----	-----	-----	-----	-----	-----	-----	-----	-----	-----	-----	-----	-----	-----	-----	-----	-----	-----	-----	-----	-----	-----	-----	-----	-----	-----	-----	-----	-----	-----	-----	-----	-----	-----	-----	-----	-----	-----	-----	-----	-----	-----	-----	-----	-----	-----	-----	-----	-----	-----	-----	-----	-----	-----	-----	-----	-----	-----	-----	-----	-----	-----	-----	-----	-----	-----	-----	-----	-----	-----	-----	-----	-----	-----	-----	-----	-----	-----	-----	-----	-----	-----	-----	-----	-----	-----	-----	-----	-----	-----	-----	-----	-----	-----	-----	-----	-----	-----	-----	-----	-----	-----	-----	-----	-----	-----	-----	-----	-----	-----	-----	-----	-----	-----	-----	-----	-----	-----	-----	-----	-----	-----	-----	-----	-----	-----	-----	-----	-----	-----	-----	-----	-----	-----	-----	-----	-----	-----	-----	-----	-----	-----	-----	-----	-----	-----	-----	-----	-----	-----	-----	-----	-----	-----	-----	-----	-----	-----	-----	-----	-----	-----	-----	-----	-----	-----	-----	-----	-----	-----	-----	-----	-----	-----	-----	-----	-----	-----	-----	-----	-----	-----	-----	-----	-----	-----	-----	-----	-----	-----	-----	-----	-----	-----	-----	-----	-----	-----	-----	-----	-----	-----	-----	-----	-----	-----	-----	-----	-----	-----	-----	-----	-----	-----	-----	-----	-----	-----	-----	-----	-----	-----	-----	-----	-----	-----	-----	-----	-----	-----	-----	-----	-----	-----

111

--	--	--	--	--	--

[illegible]

MS-012	0000								
SHORT NAME									

ELEVATIONS & SECTIONS

SECTION	
ISSUE DATE:	04/15/2025
5	

way.

STREET

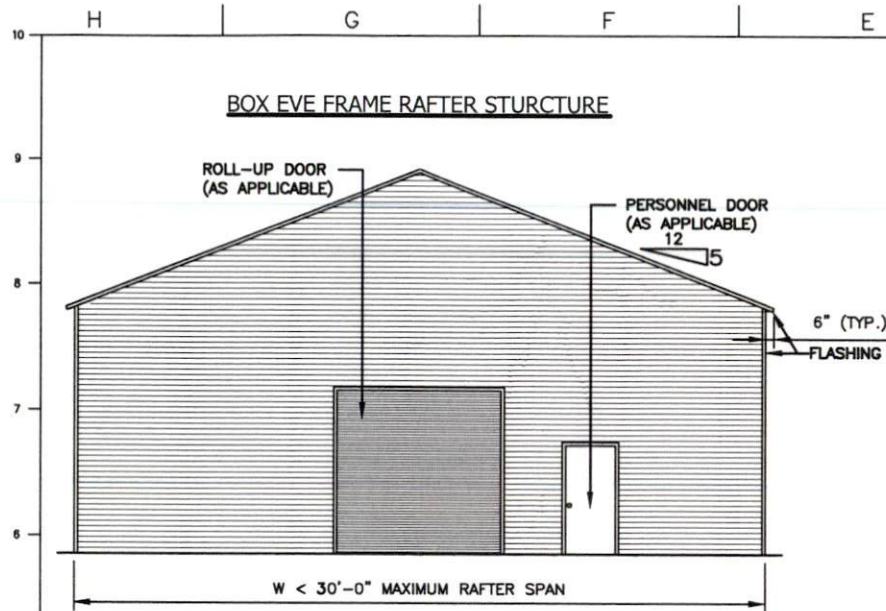
Andy Griffith
C 27030

67 N. A. A. N. C.

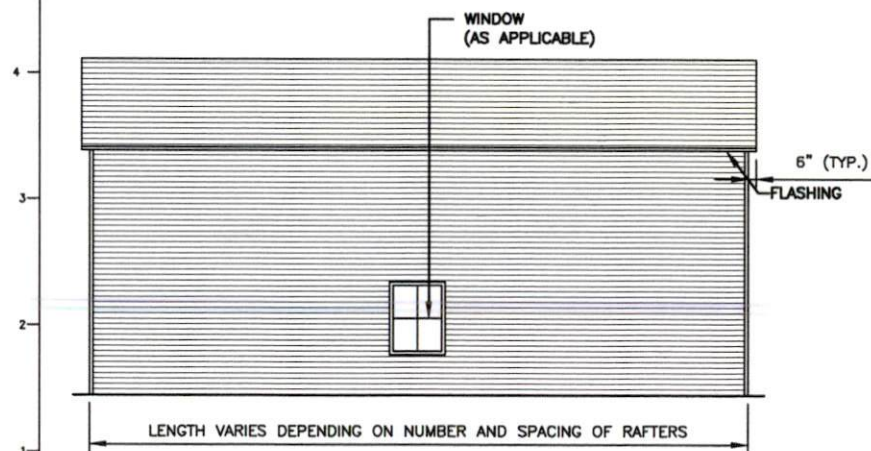
CLIENT	HIGH C	226
ADDRESS		Mt

SHEET NUMBER: S4A

PROJECT NUMBER:	#825H027
DRAWN BY:	HMO
CHECKED BY:	NRZ

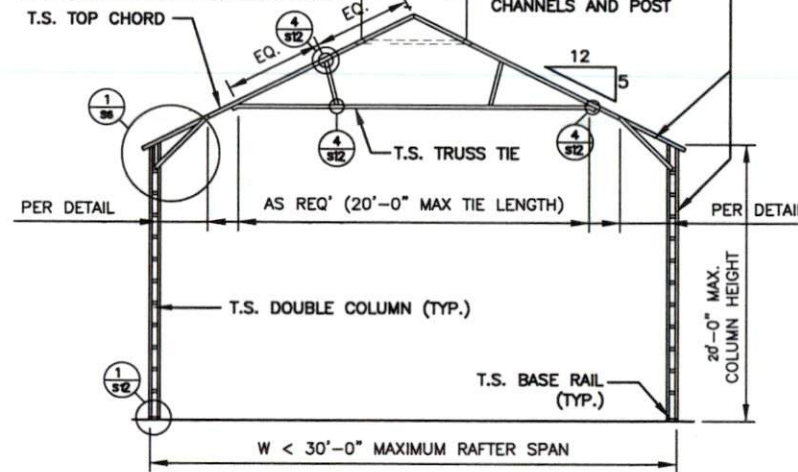


TYPICAL END ELEVATION



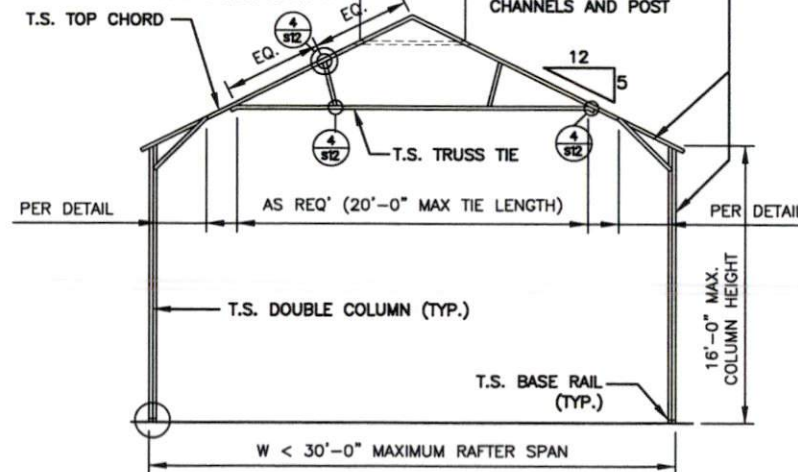
TYPICAL SIDE ELEVATION

'U' BRACE TRUSS TIE - NOTE:
 2'-0" BRACE FOR 12'-18' BUILDING WIDTH
 4'-0" BRACE FOR 19'-20' BUILDING WIDTH
 6'-0" BRACE FOR 21'-24' BUILDING WIDTH
 20'-0" BRACE FOR 25'-30' BUILDING WIDTH



TYPICAL RAFTER / COLUMN FRAME SECTION

'U' BRACE TRUSS TIE - NOTE:
 2'-0" BRACE FOR 12'-18' BUILDING WIDTH
 4'-0" BRACE FOR 19'-20' BUILDING WIDTH
 6'-0" BRACE FOR 21'-24' BUILDING WIDTH
 20'-0" BRACE FOR 25'-30' BUILDING WIDTH



TYPICAL RAFTER / COLUMN FRAME SECTION

NOTE: THIS DRAWINGS ARE VALID FOR (1) CALENDAR YEAR AFTER THE ISSUE DATE LISTED ON THE SHEET.



THIS DRAWING IS PRELIMINARY
 UNTIL SIGNED AND SEALED BY
 THE LICENSED PROFESSIONAL
 NOTED BELOW.
 PROFESSIONAL SEAL

DESIGN PROFESSIONAL
 DOTec Engineering
 118 N 2nd St.
 St. Charles, MO 63301
 Ph 636-724-9872
 Fx 636-385-5059
 WWW.DOTENGINEERING.COM
 INFO@DOTENGINEERING.COM

PROJECT NO. 2207 N Andy Griffin Parkway
 PROJECT NAME: HIGH QUALITY STEEL STRUCTURES
 SHEET NO. S4B

PROJECT NO. 2207 N Andy Griffin Parkway
 PROJECT NAME: HIGH QUALITY STEEL STRUCTURES
 SHEET NO. S4B

PROJECT NO. 2207 N Andy Griffin Parkway
 PROJECT NAME: HIGH QUALITY STEEL STRUCTURES
 SHEET NO. S4B

PROJECT NO. 2207 N Andy Griffin Parkway
 PROJECT NAME: HIGH QUALITY STEEL STRUCTURES
 SHEET NO. S4B

PROJECT NO. 2207 N Andy Griffin Parkway
 PROJECT NAME: HIGH QUALITY STEEL STRUCTURES
 SHEET NO. S4B

PROJECT NO. 2207 N Andy Griffin Parkway
 PROJECT NAME: HIGH QUALITY STEEL STRUCTURES
 SHEET NO. S4B

PROJECT NO. 2207 N Andy Griffin Parkway
 PROJECT NAME: HIGH QUALITY STEEL STRUCTURES
 SHEET NO. S4B

PROJECT NO. 2207 N Andy Griffin Parkway
 PROJECT NAME: HIGH QUALITY STEEL STRUCTURES
 SHEET NO. S4B

PROJECT NO. 2207 N Andy Griffin Parkway
 PROJECT NAME: HIGH QUALITY STEEL STRUCTURES
 SHEET NO. S4B

PROJECT NO. 2207 N Andy Griffin Parkway
 PROJECT NAME: HIGH QUALITY STEEL STRUCTURES
 SHEET NO. S4B

PROJECT NO. 2207 N Andy Griffin Parkway
 PROJECT NAME: HIGH QUALITY STEEL STRUCTURES
 SHEET NO. S4B

PROJECT NO. 2207 N Andy Griffin Parkway
 PROJECT NAME: HIGH QUALITY STEEL STRUCTURES
 SHEET NO. S4B

PROJECT NO. 2207 N Andy Griffin Parkway
 PROJECT NAME: HIGH QUALITY STEEL STRUCTURES
 SHEET NO. S4B

PROJECT NO. 2207 N Andy Griffin Parkway
 PROJECT NAME: HIGH QUALITY STEEL STRUCTURES
 SHEET NO. S4B

PROJECT NO. 2207 N Andy Griffin Parkway
 PROJECT NAME: HIGH QUALITY STEEL STRUCTURES
 SHEET NO. S4B

PROJECT NO. 2207 N Andy Griffin Parkway
 PROJECT NAME: HIGH QUALITY STEEL STRUCTURES
 SHEET NO. S4B

PROJECT NO. 2207 N Andy Griffin Parkway
 PROJECT NAME: HIGH QUALITY STEEL STRUCTURES
 SHEET NO. S4B

PROJECT NO. 2207 N Andy Griffin Parkway
 PROJECT NAME: HIGH QUALITY STEEL STRUCTURES
 SHEET NO. S4B

PROJECT NO. 2207 N Andy Griffin Parkway
 PROJECT NAME: HIGH QUALITY STEEL STRUCTURES
 SHEET NO. S4B

PROJECT NO. 2207 N Andy Griffin Parkway
 PROJECT NAME: HIGH QUALITY STEEL STRUCTURES
 SHEET NO. S4B

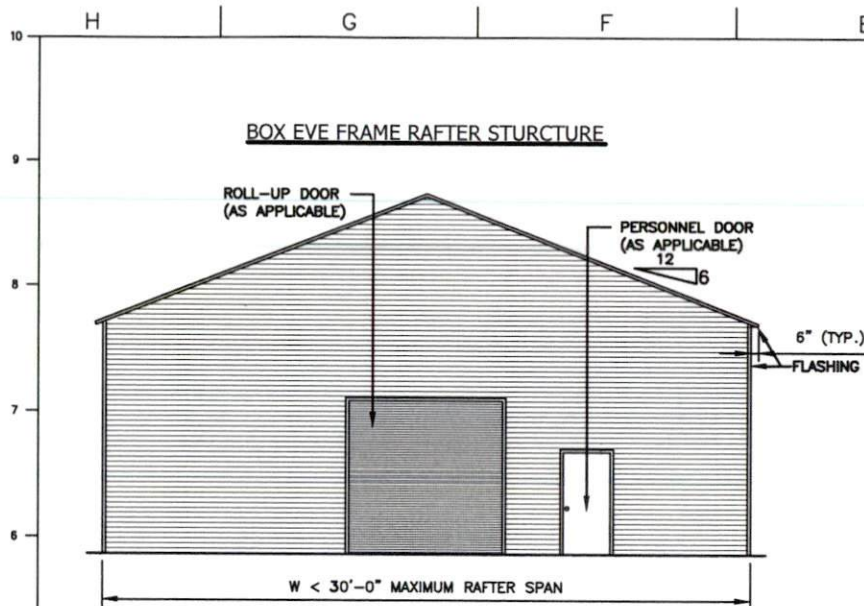
PROJECT NO. 2207 N Andy Griffin Parkway
 PROJECT NAME: HIGH QUALITY STEEL STRUCTURES
 SHEET NO. S4B

PROJECT NO. 2207 N Andy Griffin Parkway
 PROJECT NAME: HIGH QUALITY STEEL STRUCTURES
 SHEET NO. S4B

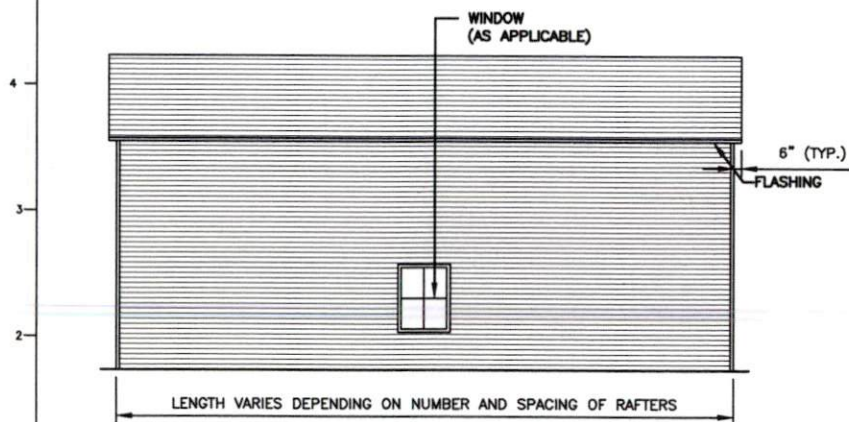
PROJECT NO. 2207 N Andy Griffin Parkway
 PROJECT NAME: HIGH QUALITY STEEL STRUCTURES
 SHEET NO. S4B

PROJECT NO. 2207 N Andy Griffin Parkway
 PROJECT NAME: HIGH QUALITY STEEL STRUCTURES
 SHEET NO. S4B

PROJECT NO. 2207 N Andy Griffin Parkway
 PROJECT NAME: HIGH QUALITY STEEL STRUCTURES
 SHEET NO. S4B

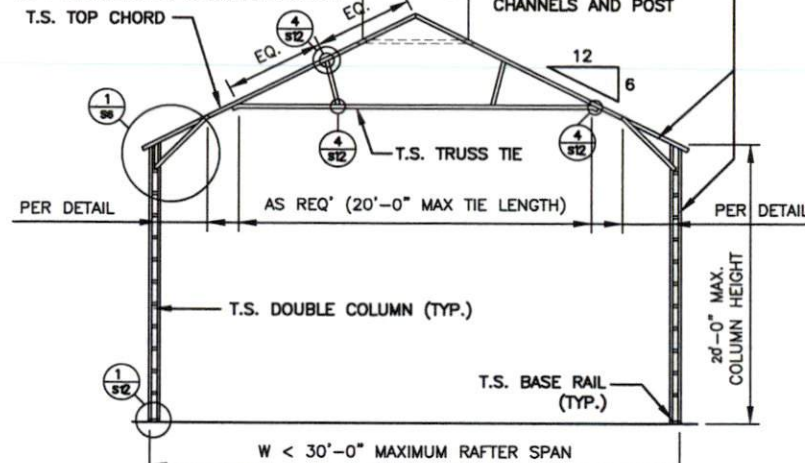


TYPICAL END ELEVATION



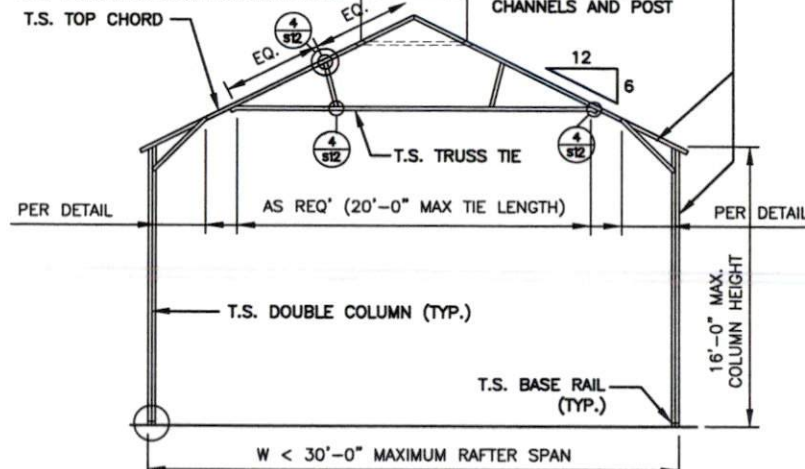
TYPICAL SIDE ELEVATION

'U' BRACE TRUSS TIE - NOTE:
 2'-0" BRACE FOR 12'-18' BUILDING WIDTH
 4'-0" BRACE FOR 19'-20' BUILDING WIDTH
 6'-0" BRACE FOR 21'-24' BUILDING WIDTH
 20'-0" BRACE FOR 25'-30' BUILDING WIDTH



TYPICAL RAFTER / COLUMN FRAME SECTION

'U' BRACE TRUSS TIE - NOTE:
 2'-0" BRACE FOR 12'-18' BUILDING WIDTH
 4'-0" BRACE FOR 19'-20' BUILDING WIDTH
 6'-0" BRACE FOR 21'-24' BUILDING WIDTH
 20'-0" BRACE FOR 25'-30' BUILDING WIDTH



TYPICAL RAFTER / COLUMN FRAME SECTION



THIS DRAWING IS PRELIMINARY
 UNTIL SIGNED AND SEALED BY
 THE LICENSED PROFESSIONAL
 NOTED BELOW.

PROFESSIONAL SEAL

DESIGN PROFESSIONAL
 DOTec Engineering
 118 N 2nd St.
 St. Charles, MO 63301
 Ph 636-724-8872
 Fx 636-385-5059
 WWW.DOTECENGINEERING.COM
 INFO@DOTECENGINEERING.COM

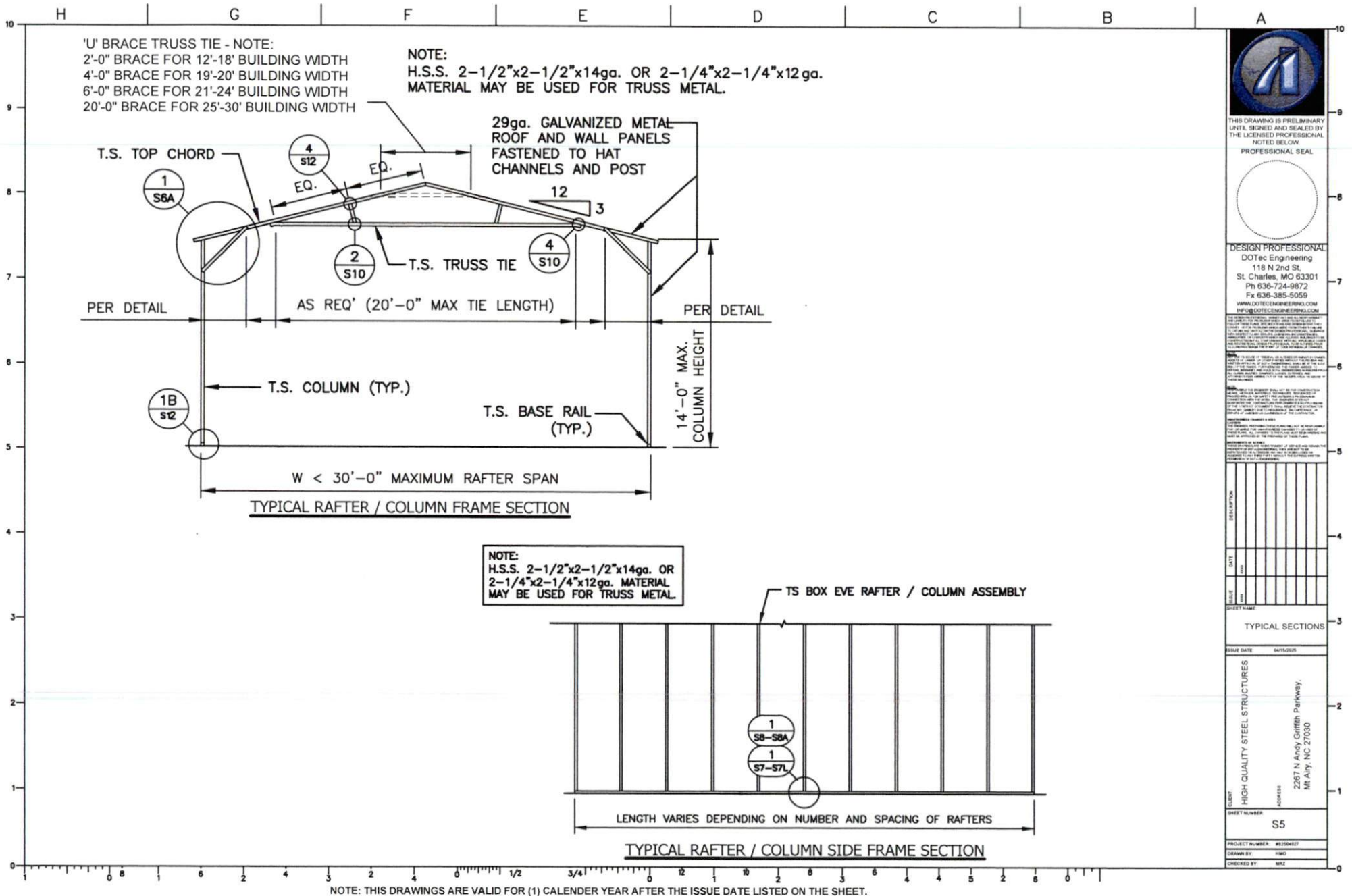
DATE: 01/15/2021
 DRAWN BY: HMO
 CHECKED BY: BRZ

PROJECT NUMBER: #2020427
 DRAWN BY: HMO
 CHECKED BY: BRZ

DATE	DESCRIPTION
01/15/2021	ELEVATIONS & SECTIONS

CLIENT: HIGH QUALITY STEEL STRUCTURES
 ADDRESS: 2267 N Andy Griffith Parkway,
 Mt Airy, NC 27030
 SHEET NUMBER: S4C

NOTE: THIS DRAWINGS ARE VALID FOR (1) CALENDAR YEAR AFTER THE ISSUE DATE LISTED ON THE SHEET.



THIS DRAWING IS PRELIMINARY
 UNTIL SIGNED AND SEALED BY
 THE LICENSED PROFESSIONAL
 NOTED BELOW
 PROFESSIONAL SEAL



DESIGN PROFESSIONAL
 DOTec Engineering
 118 N 2nd St.
 St. Charles, MO 63301
 Ph 636-724-9872
 Fx 636-385-5059
 WWW.DOTECENGINEERING.COM
 INFO@DOTECENGINEERING.COM

DOTec Engineering, Inc. is a professional engineering firm providing design and engineering services for the construction industry. The firm is licensed in the state of Missouri and is a member of the American Institute of Professional Engineers. The firm's services include structural design, mechanical design, electrical design, and civil design. The firm has a long history of providing high-quality design and engineering services to its clients. The firm is committed to providing the highest quality design and engineering services to its clients. The firm is a member of the American Institute of Professional Engineers and is a licensed professional engineering firm in the state of Missouri. The firm's services include structural design, mechanical design, electrical design, and civil design. The firm has a long history of providing high-quality design and engineering services to its clients. The firm is committed to providing the highest quality design and engineering services to its clients.

REVISION	DATE	DESCRIPTION
1	01/01/2010	ISSUED FOR PERMIT
2	01/01/2010	ISSUED FOR PERMIT
3	01/01/2010	ISSUED FOR PERMIT
4	01/01/2010	ISSUED FOR PERMIT
5	01/01/2010	ISSUED FOR PERMIT
6	01/01/2010	ISSUED FOR PERMIT
7	01/01/2010	ISSUED FOR PERMIT
8	01/01/2010	ISSUED FOR PERMIT
9	01/01/2010	ISSUED FOR PERMIT
10	01/01/2010	ISSUED FOR PERMIT

TYPICAL SECTIONS

ISSUE DATE: 01/01/2010

PROJECT NAME: HIGH QUALITY STEEL STRUCTURES

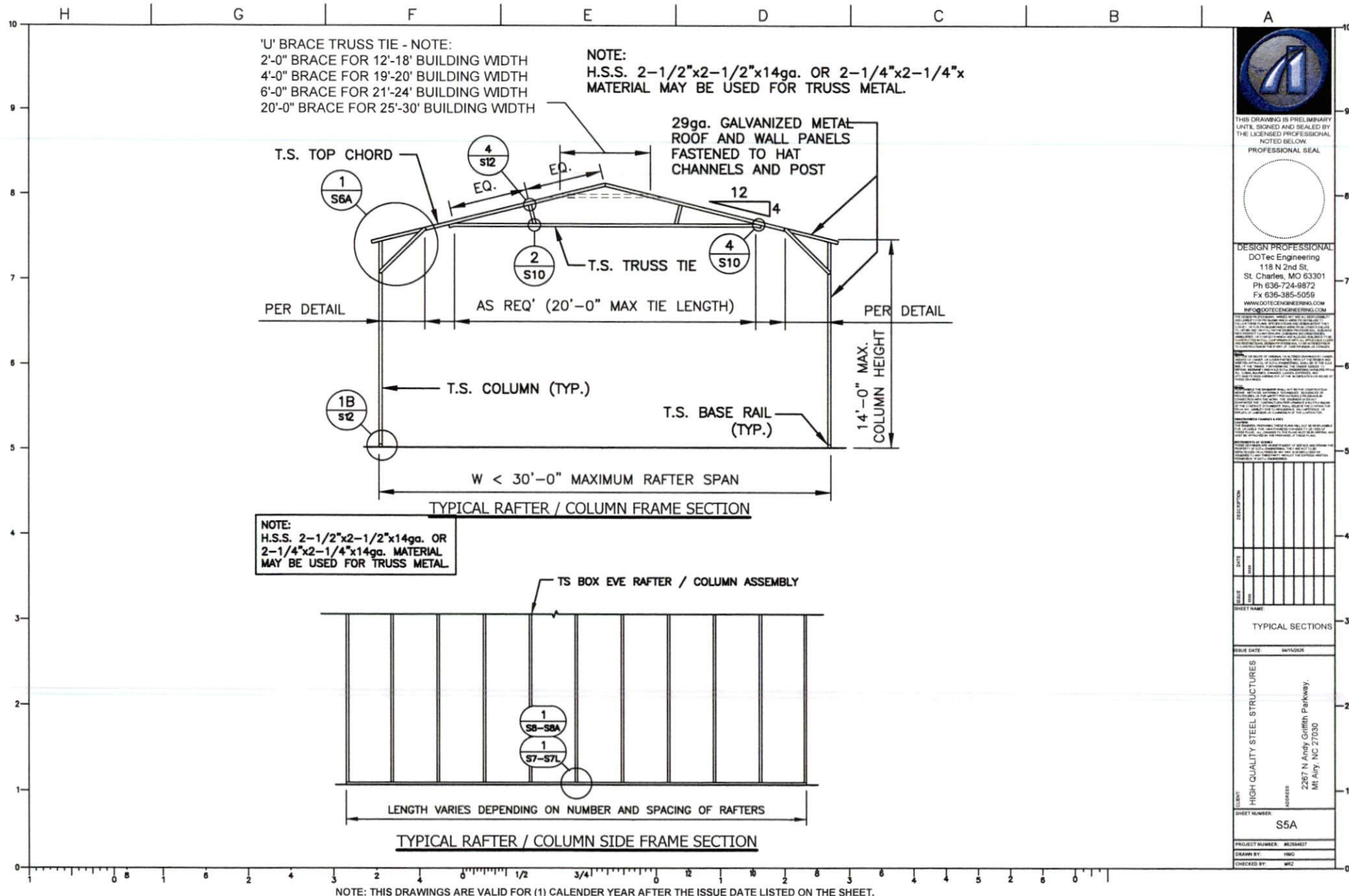
CLIENT: 2287 N Andy Griffith Parkway, Mt Airy, NC 27030

ADDRESS: 2287 N Andy Griffith Parkway, Mt Airy, NC 27030

PROJECT NUMBER: S5

DRAWN BY: WJW

CHECKED BY: WJW



THIS DRAWING IS PRELIMINARY
 UNTIL SIGNED AND SEALED BY
 THE LICENSED PROFESSIONAL
 NOTED BELOW

PROFESSIONAL SEAL



DESIGN PROFESSIONAL
 DOTec Engineering
 118 N 2nd St.
 St. Charles, MO 63301
 Ph 636-724-9872
 Fx 636-385-5059
 WWW.DOTECENGINEERING.COM
 INFO@DOTECENGINEERING.COM

DATE: 10/1/2017
 TIME: 10:10:00
 USER: JLM

PROJECT: 2287 N Andy Griffith Parkway
 Mt. Airy, NC 27030

PROJECT: 2287 N Andy Griffith Parkway
 Mt. Airy, NC 27030

PROJECT: 2287 N Andy Griffith Parkway
 Mt. Airy, NC 27030

PROJECT: 2287 N Andy Griffith Parkway
 Mt. Airy, NC 27030

PROJECT: 2287 N Andy Griffith Parkway
 Mt. Airy, NC 27030

PROJECT: 2287 N Andy Griffith Parkway
 Mt. Airy, NC 27030

PROJECT: 2287 N Andy Griffith Parkway
 Mt. Airy, NC 27030

PROJECT: 2287 N Andy Griffith Parkway
 Mt. Airy, NC 27030

PROJECT: 2287 N Andy Griffith Parkway
 Mt. Airy, NC 27030

PROJECT: 2287 N Andy Griffith Parkway
 Mt. Airy, NC 27030

PROJECT: 2287 N Andy Griffith Parkway
 Mt. Airy, NC 27030

PROJECT: 2287 N Andy Griffith Parkway
 Mt. Airy, NC 27030

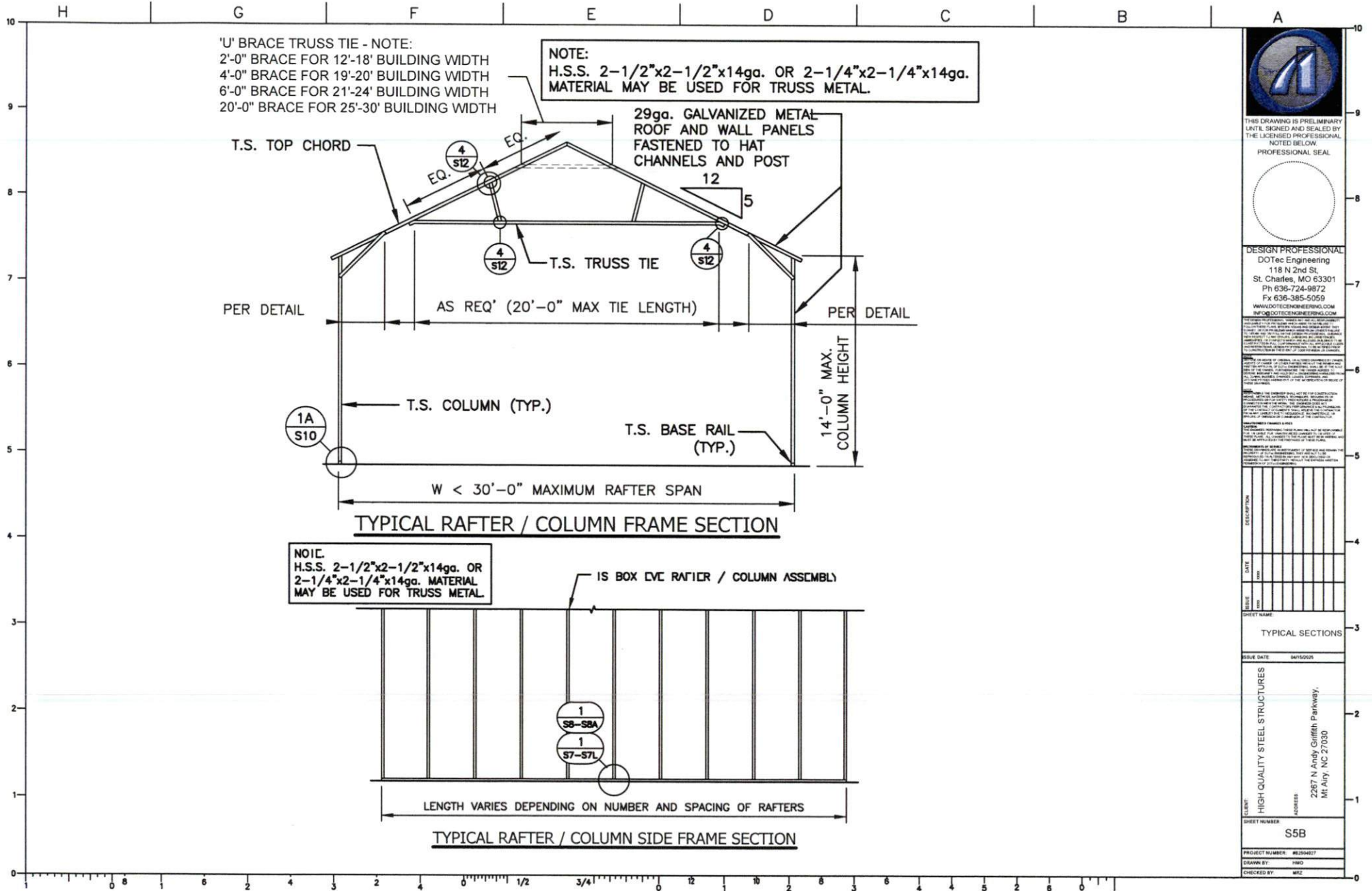
PROJECT: 2287 N Andy Griffith Parkway
 Mt. Airy, NC 27030

PROJECT: 2287 N Andy Griffith Parkway
 Mt. Airy, NC 27030

PROJECT: 2287 N Andy Griffith Parkway
 Mt. Airy, NC 27030

PROJECT: 2287 N Andy Griffith Parkway
 Mt. Airy, NC 27030

PROJECT: 2287 N Andy Griffith Parkway
 Mt. Airy, NC 27030



THIS DRAWING IS PRELIMINARY
 UNTIL SIGNED AND SEALED BY
 THE LICENSED PROFESSIONAL
 NOTED BELOW
 PROFESSIONAL SEAL



DESIGN PROFESSIONAL
 DOTec Engineering
 118 N 2nd St.
 St. Charles, MO 63301
 Ph 636-724-9872
 Fx 636-385-5059
 WWW.DOTECENGINEERING.COM
 INFO@DOTECENGINEERING.COM

THIS DRAWING IS PRELIMINARY
 UNTIL SIGNED AND SEALED BY
 THE LICENSED PROFESSIONAL
 NOTED BELOW
 PROFESSIONAL SEAL

THIS DRAWING IS PRELIMINARY
 UNTIL SIGNED AND SEALED BY
 THE LICENSED PROFESSIONAL
 NOTED BELOW
 PROFESSIONAL SEAL

THIS DRAWING IS PRELIMINARY
 UNTIL SIGNED AND SEALED BY
 THE LICENSED PROFESSIONAL
 NOTED BELOW
 PROFESSIONAL SEAL

THIS DRAWING IS PRELIMINARY
 UNTIL SIGNED AND SEALED BY
 THE LICENSED PROFESSIONAL
 NOTED BELOW
 PROFESSIONAL SEAL

THIS DRAWING IS PRELIMINARY
 UNTIL SIGNED AND SEALED BY
 THE LICENSED PROFESSIONAL
 NOTED BELOW
 PROFESSIONAL SEAL

THIS DRAWING IS PRELIMINARY
 UNTIL SIGNED AND SEALED BY
 THE LICENSED PROFESSIONAL
 NOTED BELOW
 PROFESSIONAL SEAL

THIS DRAWING IS PRELIMINARY
 UNTIL SIGNED AND SEALED BY
 THE LICENSED PROFESSIONAL
 NOTED BELOW
 PROFESSIONAL SEAL

THIS DRAWING IS PRELIMINARY
 UNTIL SIGNED AND SEALED BY
 THE LICENSED PROFESSIONAL
 NOTED BELOW
 PROFESSIONAL SEAL

THIS DRAWING IS PRELIMINARY
 UNTIL SIGNED AND SEALED BY
 THE LICENSED PROFESSIONAL
 NOTED BELOW
 PROFESSIONAL SEAL

THIS DRAWING IS PRELIMINARY
 UNTIL SIGNED AND SEALED BY
 THE LICENSED PROFESSIONAL
 NOTED BELOW
 PROFESSIONAL SEAL

THIS DRAWING IS PRELIMINARY
 UNTIL SIGNED AND SEALED BY
 THE LICENSED PROFESSIONAL
 NOTED BELOW
 PROFESSIONAL SEAL

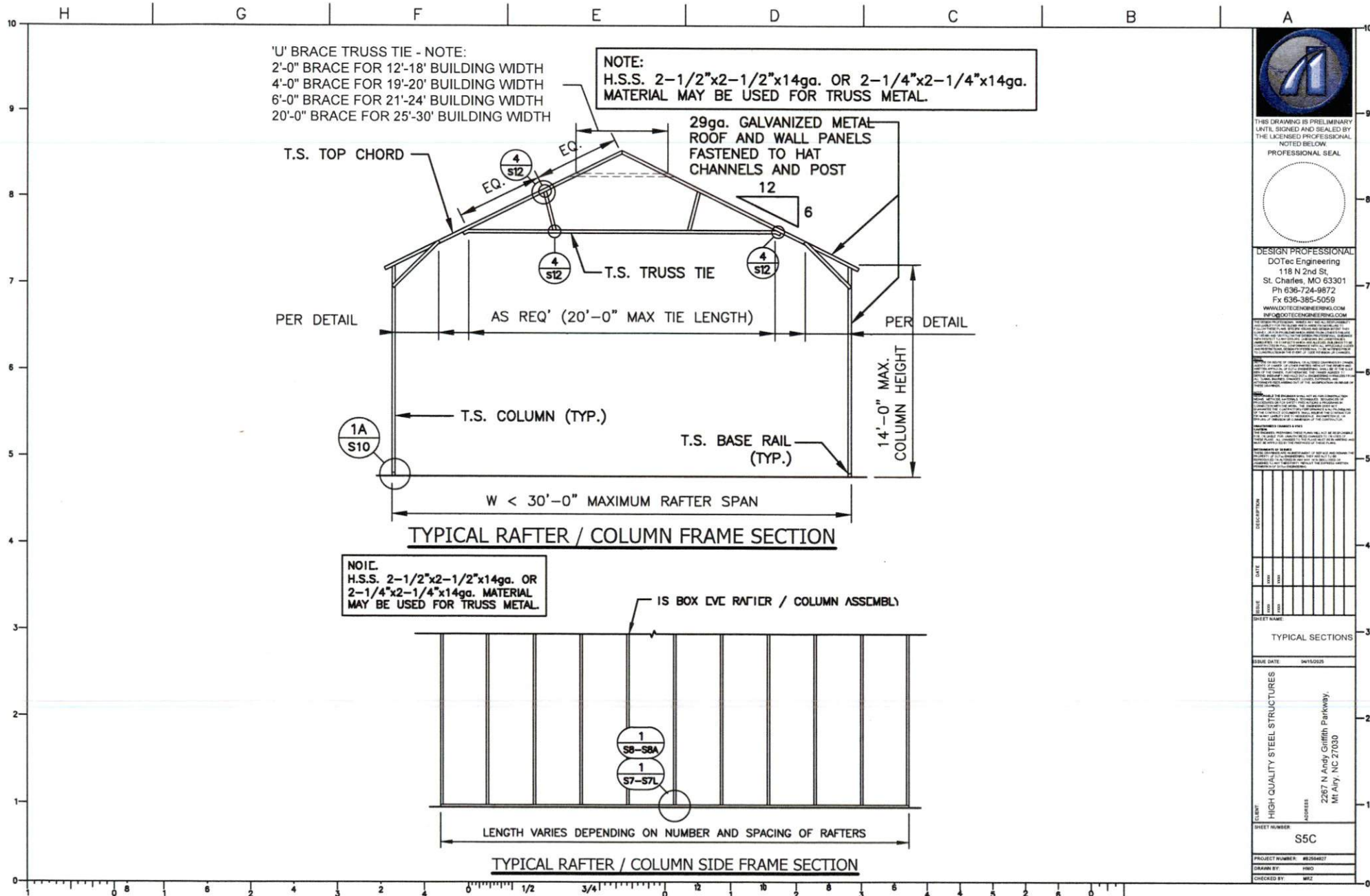
THIS DRAWING IS PRELIMINARY
 UNTIL SIGNED AND SEALED BY
 THE LICENSED PROFESSIONAL
 NOTED BELOW
 PROFESSIONAL SEAL

THIS DRAWING IS PRELIMINARY
 UNTIL SIGNED AND SEALED BY
 THE LICENSED PROFESSIONAL
 NOTED BELOW
 PROFESSIONAL SEAL

THIS DRAWING IS PRELIMINARY
 UNTIL SIGNED AND SEALED BY
 THE LICENSED PROFESSIONAL
 NOTED BELOW
 PROFESSIONAL SEAL

THIS DRAWING IS PRELIMINARY
 UNTIL SIGNED AND SEALED BY
 THE LICENSED PROFESSIONAL
 NOTED BELOW
 PROFESSIONAL SEAL

THIS DRAWING IS PRELIMINARY
 UNTIL SIGNED AND SEALED BY
 THE LICENSED PROFESSIONAL
 NOTED BELOW
 PROFESSIONAL SEAL



THIS DRAWING IS PRELIMINARY
 UNTIL SIGNED AND SEALED BY
 THE LICENSED PROFESSIONAL
 ENGINEER NOTED BELOW
 PROFESSIONAL SEAL



DESIGN PROFESSIONAL
 DO Tec Engineering
 118 N 2nd St.
 St. Charles, MO 63301
 Ph 636-724-9872
 Fx 636-385-5059
 WWW.DOTECENGINEERING.COM
 INFO@DOTECENGINEERING.COM

STATE OF MISSOURI
 I, _____, a duly Licensed Professional Engineer, do hereby certify that I am the author of the above design and that it was prepared by me or under my direct supervision and that I am a duly Licensed Professional Engineer in the State of Missouri.

DATE OF DESIGN: _____
 DATE OF REVIEW: _____
 DATE OF ISSUE: _____

PROJECT NAME: _____
 PROJECT NUMBER: _____

ISSUE DATE: 09/15/2025

PROJECT NAME: HIGH-QUALITY STEEL STRUCTURES

PROJECT ADDRESS: 2267 N Andy Griffith Parkway,
 Mt Airy, NC 27030

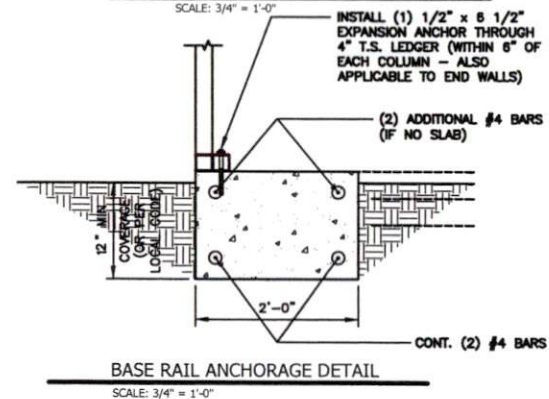
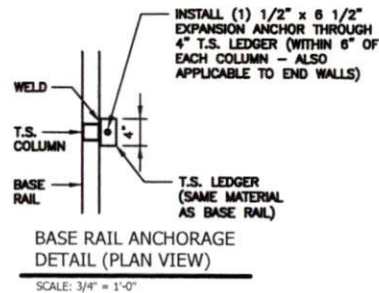
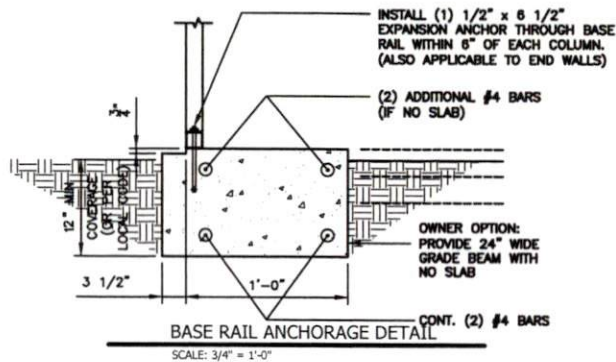
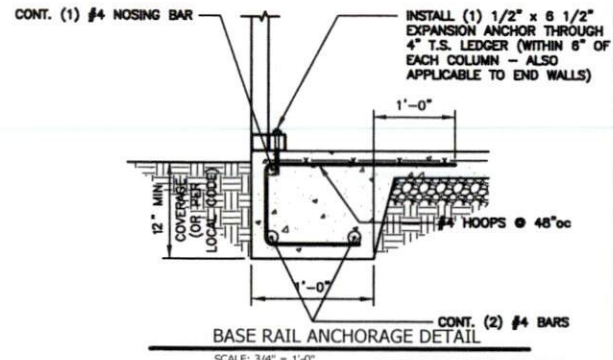
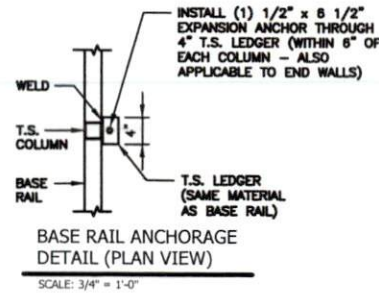
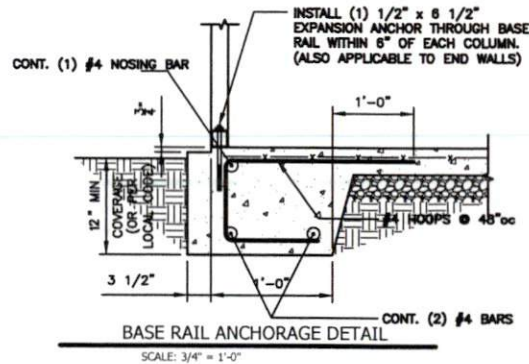
SHEET NUMBER: S5C

PROJECT NUMBER: WEDS4457

DRAWN BY: WED

CHECKED BY: WED

CONCRETE BASE RAIL ANCHORAGE



GENERAL NOTES:

- ALL CONCRETE MONOLITHIC SLAB DESIGN BASED ON MINIMUM SOIL BEARING CAPACITY OF 2,000 P.S.F.
- CONCRETE: CONCRETE SHALL HAVE A MINIMUM SPECIFIED COMPRESSIVE STRENGTH OF 3,000 P.S.I. AT 28 DAYS.
- COVER OVER REINFORCING STEEL: FOR FOUNDATIONS, MINIMUM CONCRETE COVER OVER REINFORCING BARS SHALL BE PER ACI-318: 3" IN FOUNDATIONS WHERE THE CONCRETE IS CAST AGAINST AND PERMANENTLY IN CONTACT WITH THE EARTH OR EXPOSED TO THE EARTH AND WEATHER AND 1-1/2" ELSEWHERE.
- REINFORCING STEEL: THE TURNDOWN REINFORCING STEEL SHALL BE ASTM A615 GRADE 60. THE SLAB REINFORCEMENT SHALL BE WELDED WIRE FABRIC MEETING ASTM A185 OR FIBERGLASS FIBER REINFORCEMENT.
- REINFORCEMENT MAT BE BENT IN THE SHOP OF THE FIELD PROVIDED:
 1. REINFORCEMENT IS BENT COLD.
 2. THE DIAMETER OF THE BEND, MEASURED ON THE INSIDE OF THE BAR, IS NOT LESS THAN SIX-BAR DIAMETERS.
 3. REINFORCEMENT PARTIALLY EMBEDDED IN CONCRETE SHALL NOT BE FIELD BENT.

NOTE: THIS DRAWINGS ARE VALID FOR (1) CALENDER YEAR AFTER THE ISSUE DATE LISTED ON THE SHEET.



THIS DRAWING IS PRELIMINARY UNTIL SIGNED AND SEALED BY THE LICENSED PROFESSIONAL ENGINEER NOTED BELOW.



DESIGN PROFESSIONAL
DOTec Engineering
118 N 2nd St.
St. Charles, MO 63301
Ph 636-724-9872
Fx 636-385-5059
WWW.DOTECENGINEERING.COM
INFO@DOTECENGINEERING.COM

FOUNDAION DETAIL

DATE

FOUNDATION DETAIL

ISSUE DATE

CLIENT: HIGH QUALITY STEEL STRUCTURES
ADDRESS: 2387 N Andy Griffith Parkway, Mt Airy, NC 27030

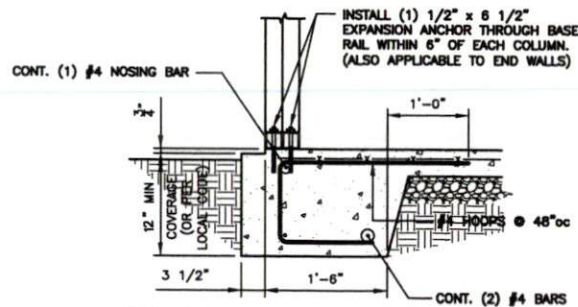
SHEET NUMBER: S7

PROJECT NUMBER: WJ030027

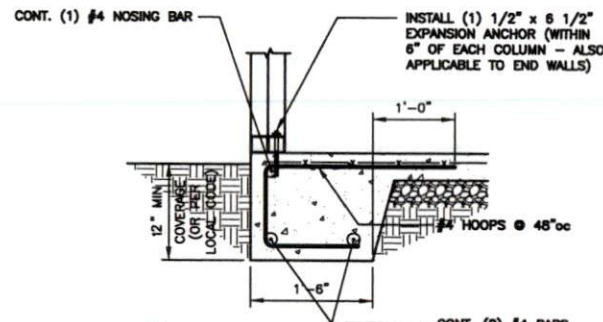
DRAWN BY: HBC

CHECKED BY: MKC

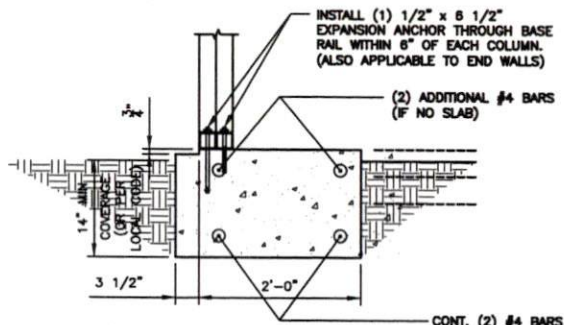
CONCRETE BASE RAIL ANCHORAGE



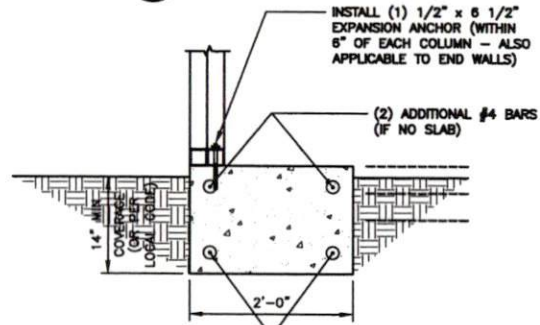
1
S7D BASE RAIL ANCHORAGE DETAIL
SCALE: 3/4" = 1'-0"



1
S7F BASE RAIL ANCHORAGE DETAIL
SCALE: 3/4" = 1'-0"



1
S7E BASE RAIL ANCHORAGE DETAIL
SCALE: 3/4" = 1'-0"



1
S7G BASE RAIL ANCHORAGE DETAIL
SCALE: 3/4" = 1'-0"

GENERAL NOTES:

ALL CONCRETE MONOLITHIC SLAB DESIGN BASED ON MINIMUM SOIL BEARING CAPACITY OF 2,000 P.S.F.

CONCRETE:

CONCRETE SHALL HAVE A MINIMUM SPECIFIED COMPRESSIVE STRENGTH OF 3,000 P.S.I. AT 28 DAYS.

COVER OVER REINFORCING STEEL:

FOR FOUNDATIONS, MINIMUM CONCRETE COVER OVER REINFORCING BARS SHALL BE PER ACI-318:

3" IN FOUNDATIONS WHERE THE CONCRETE IS CAST AGAINST AND PERMANENTLY IN CONTACT WITH THE EARTH OR EXPOSED TO THE EARTH AND WEATHER AND 1-1/2" ELSEWHERE.

REINFORCING STEEL:

THE TURNDOWN REINFORCING STEEL SHALL BE ASTM A615 GRADE 60. THE SLAB REINFORCEMENT SHALL BE WELDED WIRE FABRIC MEETING ASTM A185 OR FIBERGLASS FIBER REINFORCEMENT.

REINFORCEMENT MAY BE BENT IN THE SHOP OF THE FIELD PROVIDED:

1. REINFORCEMENT IS BENT COLD.
2. THE DIAMETER OF THE BEND, MEASURED ON THE INSIDE OF THE BAR, IS NOT LESS THAN SIX-BAR DIAMETERS.
3. REINFORCEMENT PARTIALLY EMBEDDED IN CONCRETE SHALL NOT BE FIELD BENT.

NOTE: THIS DRAWINGS ARE VALID FOR (1) CALENDER YEAR AFTER THE ISSUE DATE LISTED ON THE SHEET.



THIS DRAWING IS PRELIMINARY
UNLESS SIGNED AND SEALED BY
THE LICENSED PROFESSIONAL
NOTED BELOW
PROFESSIONAL SEAL

DESIGN PROFESSIONAL
DOTec Engineering
118 N 2nd St.
St. Charles, MO 63301
Ph 636-724-9872
Fax 636-385-5059
WWW.DOTECENGINEERING.COM
INFO@DOTECENGINEERING.COM

THIS DRAWING IS PRELIMINARY
UNLESS SIGNED AND SEALED BY
THE LICENSED PROFESSIONAL
NOTED BELOW
PROFESSIONAL SEAL

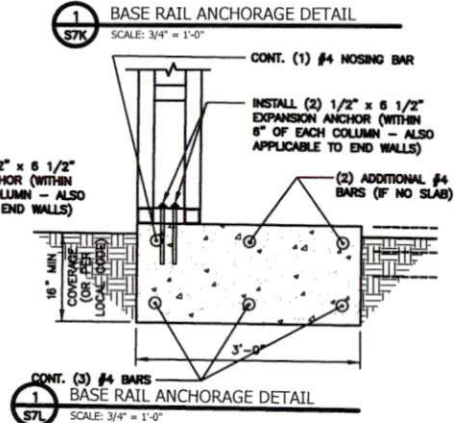
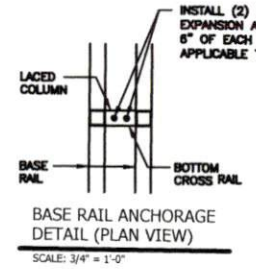
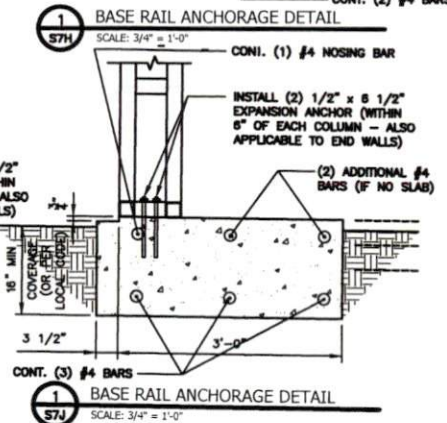
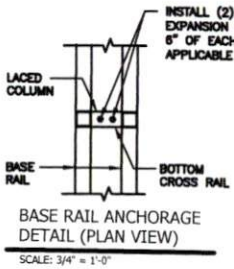
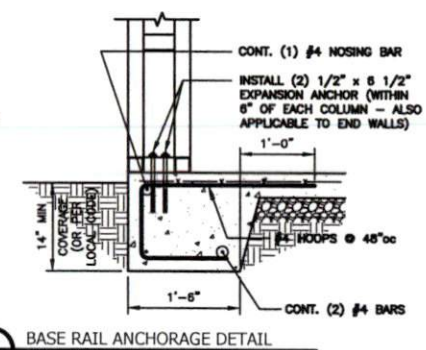
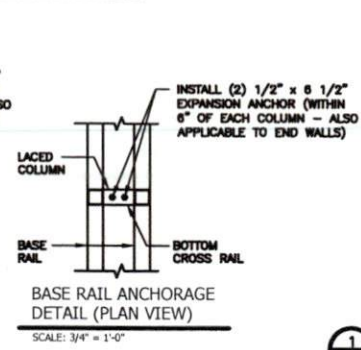
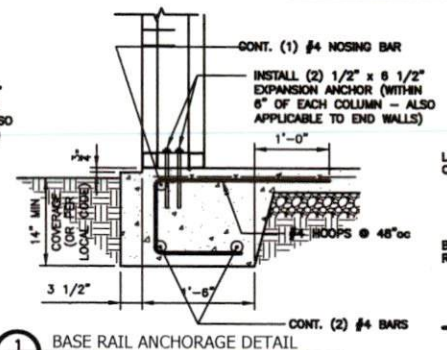
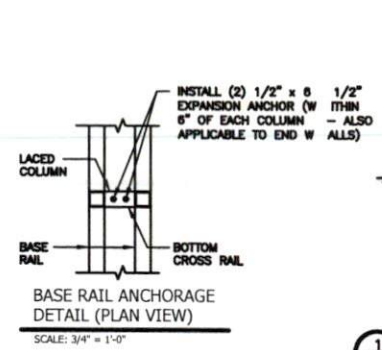
THIS DRAWING IS PRELIMINARY
UNLESS SIGNED AND SEALED BY
THE LICENSED PROFESSIONAL
NOTED BELOW
PROFESSIONAL SEAL

FOUNDATION
DETAIL

2287 N Andy Griffith Parkway,
Mt. Airy, NC 27030

PROJECT NUMBER: 18050407
DRAWN BY: FMC
CHECKED BY: MKZ

CONCRETE BASE RAIL ANCHORAGE



GENERAL NOTES:

- ALL CONCRETE MONOLITHIC SLAB DESIGN BASED ON MINIMUM SOIL BEARING CAPACITY OF 2,000 P.S.F.
- CONCRETE:
CONCRETE SHALL HAVE A MINIMUM SPECIFIED COMPRESSIVE STRENGTH OF 3,000 P.S.I. AT 28 DAYS.
- COVER OVER REINFORCING STEEL:
FOR FOUNDATIONS, MINIMUM CONCRETE COVER OVER REINFORCING BARS SHALL BE PER ACI-318:
3" IN FOUNDATIONS WHERE THE CONCRETE IS CAST AGAINST AND PERMANENTLY IN CONTACT WITH THE EARTH OR EXPOSED TO THE EARTH AND WEATHER AND 1-1/2" ELSEWHERE.
- REINFORCING STEEL:
THE TURNDOWN REINFORCING STEEL SHALL BE ASTM A615 GRADE 60. THE SLAB REINFORCEMENT SHALL BE WELDED WIRE FABRIC MEETING ASTM A185 OR FIBERGLASS FIBER REINFORCEMENT.
- REINFORCEMENT MAY BE BENT IN THE SHOP OF THE FIELD PROVIDED:
 1. REINFORCEMENT IS BENT COLD.
 2. THE DIAMETER OF THE BEND, MEASURED ON THE INSIDE OF THE BAR, IS NOT LESS THAN SIX-BAR DIAMETERS.
 3. REINFORCEMENT PARTIALLY EMBEDDED IN CONCRETE SHALL NOT BE FIELD BENT.

NOTE: THIS DRAWINGS ARE VALID FOR (1) CALENDER YEAR AFTER THE ISSUE DATE LISTED ON THE SHEET.



THIS DRAWING IS PRELIMINARY
UNTIL SIGNED AND SEALED BY
THE LICENSED PROFESSIONAL
NOTED BELOW.
PROFESSIONAL SEAL

DESIGN PROFESSIONAL
DOTec Engineering
118 N 2nd St.
St. Charles, MO 63301
Ph 636-724-9872
Fx 636-385-5059
WWW.DOTTECHENGINEERING.COM
INFO@DOTTECHENGINEERING.COM

DATE: 01/15/2021
BY: [Signature]
CHECKED BY: [Signature]
ISSUED BY: [Signature]

FOUNDATION
DETAIL

PROJECT NUMBER: 20200127
DRAWN BY: [Signature]
CHECKED BY: [Signature]

SHEET NUMBER: S9

CLIENT: HIGH-QUALITY STEEL STRUCTURES
ADDRESS: 2287 N Andy Griffin Parkway,
Mt Airy, NC 27030

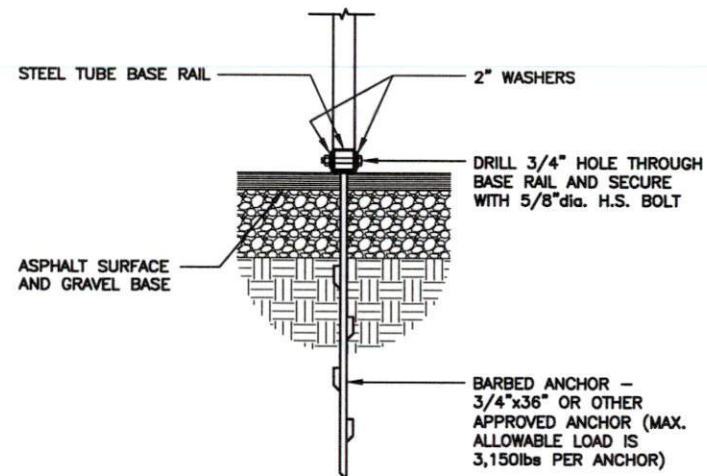
DATE: 01/15/2021

ISSUE DATE: 01/15/2021

PROJECT NUMBER: 20200127
DRAWN BY: [Signature]
CHECKED BY: [Signature]



IN ALL CASES, IF FROST DEPTH EXCEEDS STATED DEPTH,
ANCHOR SHOULD EXTEND A MIN. OF 12" BELOW FROST LINE.

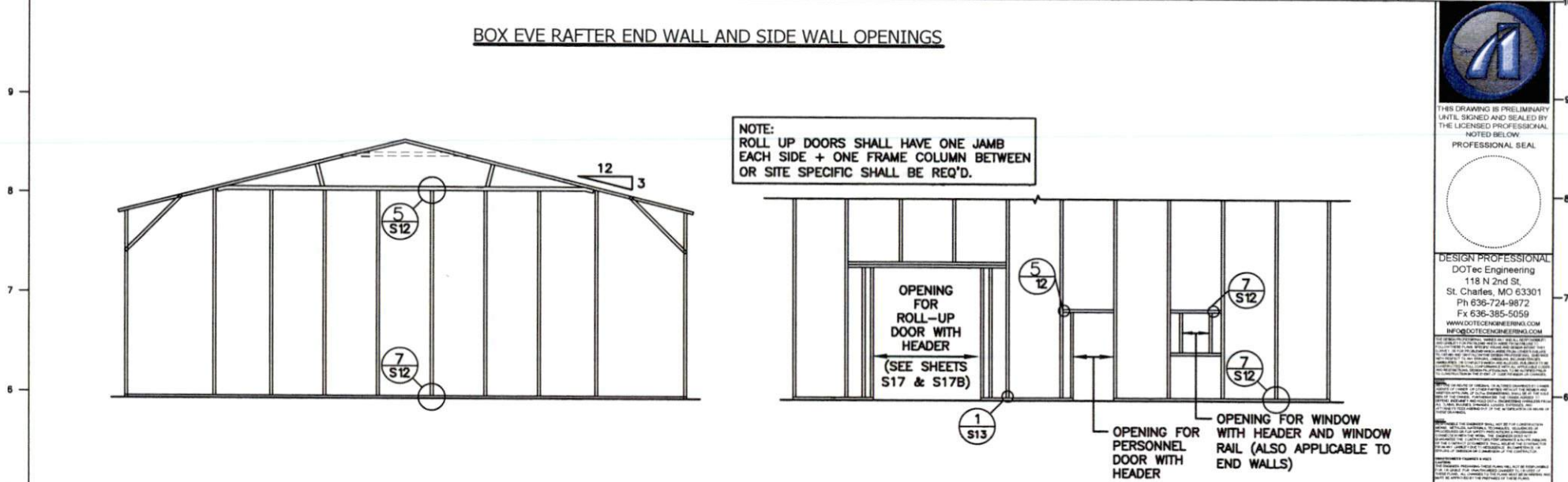


1 ASPHALT / BASE RAIL ANCHORAGE DETAIL
S8A SCALE: 3/4" = 1'-0"

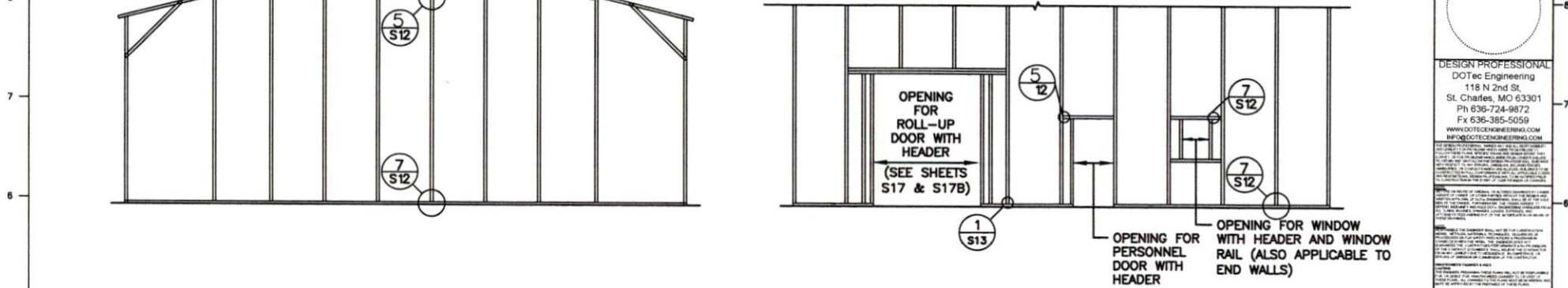
PROJECT NUMBER:	#B2504027
DRAWN BY:	HMO
CHECKED BY:	WRZ

NOTE: THIS DRAWINGS ARE VALID FOR (1) CALENDER YEAR AFTER THE ISSUE DATE LISTED ON THE SHEET

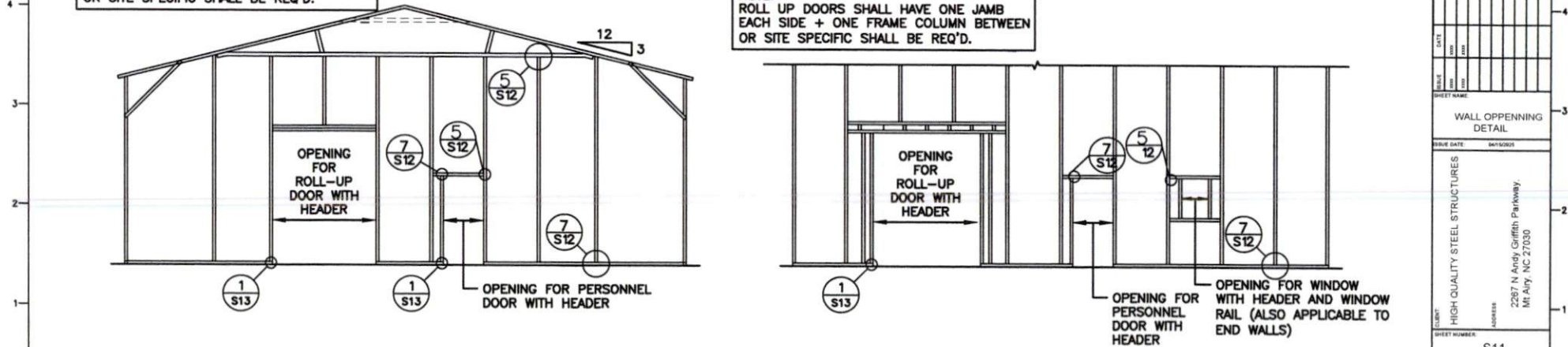
A horizontal number line with tick marks labeled H, G, F, E, D, C, B, and A from left to right. A scale bar at the top left indicates a length of 10 units.



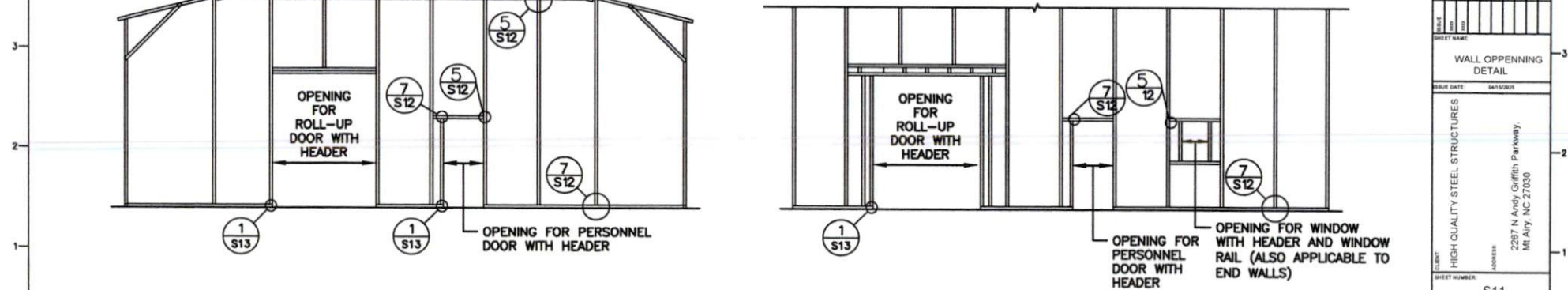
TYPICAL BOX EVE RAFTER / END WALL COLUMN FRAME SECTION TYPICAL END WALL OPENING FRAMING SECTION



TYPICAL BOX EYE RAFTER / END WALL COLUMN FRAME SECTION **TYPICAL END WALL OPENING FRAMING SECTION**



TYPICAL BOX EVE RAFTER END WALL OPENINGS FRAMING SECTION TYPICAL SIDE WALL OPENING FRAMING SECTION



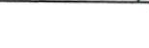
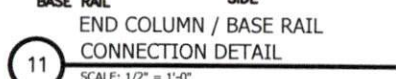
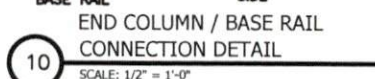
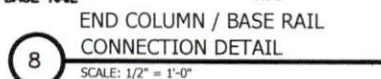
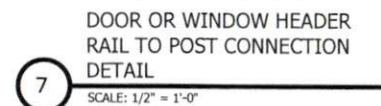
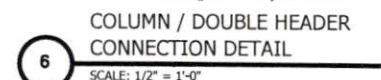
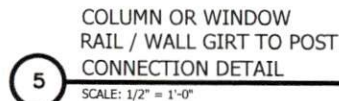
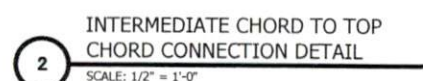
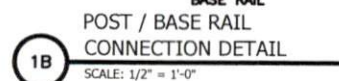
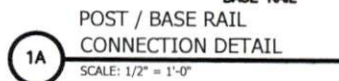
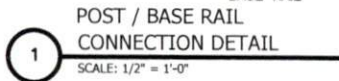
TYPICAL BOX EVE RAFTER END WALL OPENINGS FRAMING SECTION
TYPICAL SIDE WALL OPENING FRAMING SECTION

0 1 2 3 4 5 6 7 8 9 10 11 12 13 14 15 16 17 18 19 20 21 22 23 24 25 26 27 28 29 30 31 32 33 34 35 36 37 38 39 40 41 42 43 44 45 46 47 48 49 50 51 52 53 54 55 56 57 58 59 60 61 62 63 64 65 66 67 68 69 70 71 72 73 74 75 76 77 78 79 80 81 82 83 84 85 86 87 88 89 90 91 92 93 94 95 96 97 98 99 100

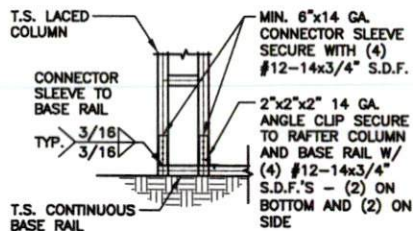
NOTE: THIS DRAWINGS ARE VALID FOR (1) CALENDAR YEAR AFTER THE ISSUE DATE LISTED ON THE SHEET.

CHECKED BY: WJZ

H	G	F	E	D	C	B	A
---	---	---	---	---	---	---	---

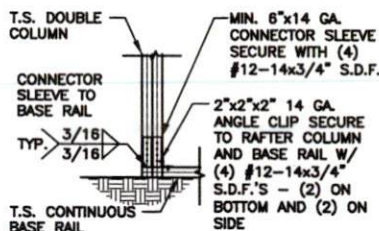


CONNECTION DETAILS



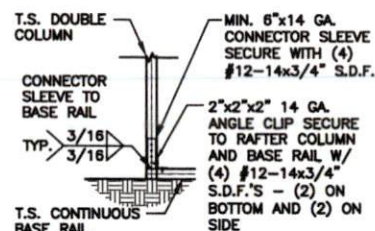
END COLUMN / BASE RAIL
CONNECTION DETAIL

SCALE: 1/2" = 1'-0"



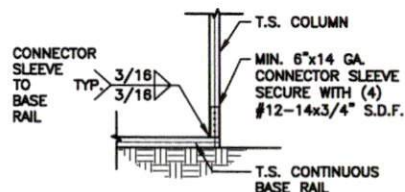
END COLUMN / BASE RAIL
CONNECTION DETAIL

SCALE: 1/2" = 1'-0"



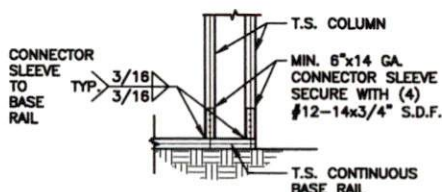
END COLUMN / BASE RAIL
CONNECTION DETAIL

SCALE: 1/2" = 1'-0"



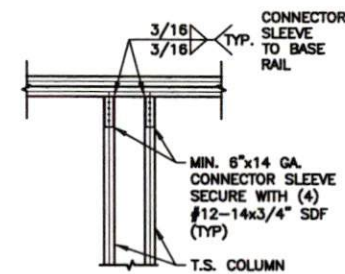
COLUMN / BASE RAIL
CONNECTION DETAIL

SCALE: 1/2" = 1'-0"



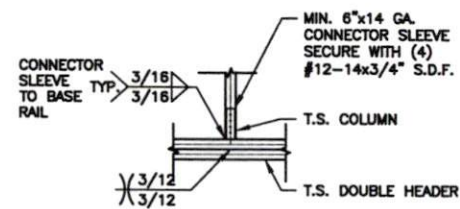
COLUMN / BASE RAIL
CONNECTION DETAIL

SCALE: 1/2" = 1'-0"



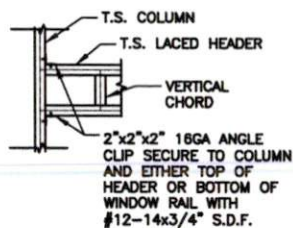
DOUBLE HEADER / COLUMN
CONNECTION DETAIL

SCALE: 1/2" = 1'-0"



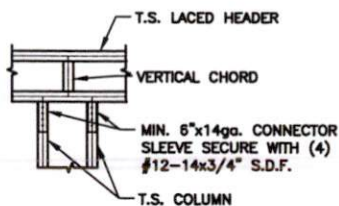
COLUMN / DOUBLE HEADER
CONNECTION DETAIL

SCALE: 1/2" = 1'-0"



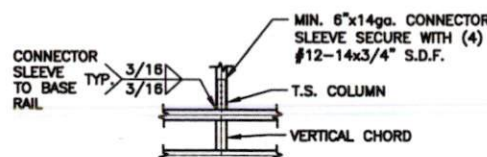
COLUMN / LACED HEADER
CONNECTION DETAIL

SCALE: 1/2" = 1'-0"



LACED HEADER / COLUMN
CONNECTION DETAIL

SCALE: 1/2" = 1'-0"



COLUMN / LACED HEADER
CONNECTION DETAIL

SCALE: 1/2" = 1'-0"

NOTE: THIS DRAWINGS ARE VALID FOR (1) CALENDER YEAR AFTER THE ISSUE DATE LISTED ON THE SHEET.



THIS DRAWING IS PRELIMINARY
UNTIL SIGNED AND SEALED BY
THE LICENSED PROFESSIONAL
NOTED BELOW.
PROFESSIONAL SEAL

DESIGN PROFESSIONAL
DO Tec Engineering
118 N 2nd St.
St. Charles, MO 63301
Ph 636-724-9872
Fx 636-385-5059
WWW.DOTECENGINEERING.COM

DESIGN PROFESSIONAL
DO Tec Engineering
118 N 2nd St.
St. Charles, MO 63301
Ph 636-724-9872
Fx 636-385-5059
WWW.DOTECENGINEERING.COM

DESIGN PROFESSIONAL
DO Tec Engineering
118 N 2nd St.
St. Charles, MO 63301
Ph 636-724-9872
Fx 636-385-5059
WWW.DOTECENGINEERING.COM

DESIGN PROFESSIONAL
DO Tec Engineering
118 N 2nd St.
St. Charles, MO 63301
Ph 636-724-9872
Fx 636-385-5059
WWW.DOTECENGINEERING.COM

DESIGN PROFESSIONAL
DO Tec Engineering
118 N 2nd St.
St. Charles, MO 63301
Ph 636-724-9872
Fx 636-385-5059
WWW.DOTECENGINEERING.COM

DESIGN PROFESSIONAL
DO Tec Engineering
118 N 2nd St.
St. Charles, MO 63301
Ph 636-724-9872
Fx 636-385-5059
WWW.DOTECENGINEERING.COM

DESIGN PROFESSIONAL
DO Tec Engineering
118 N 2nd St.
St. Charles, MO 63301
Ph 636-724-9872
Fx 636-385-5059
WWW.DOTECENGINEERING.COM

DESIGN PROFESSIONAL
DO Tec Engineering
118 N 2nd St.
St. Charles, MO 63301
Ph 636-724-9872
Fx 636-385-5059
WWW.DOTECENGINEERING.COM

DESIGN PROFESSIONAL
DO Tec Engineering
118 N 2nd St.
St. Charles, MO 63301
Ph 636-724-9872
Fx 636-385-5059
WWW.DOTECENGINEERING.COM

DESIGN PROFESSIONAL
DO Tec Engineering
118 N 2nd St.
St. Charles, MO 63301
Ph 636-724-9872
Fx 636-385-5059
WWW.DOTECENGINEERING.COM

DESIGN PROFESSIONAL
DO Tec Engineering
118 N 2nd St.
St. Charles, MO 63301
Ph 636-724-9872
Fx 636-385-5059
WWW.DOTECENGINEERING.COM

DESIGN PROFESSIONAL
DO Tec Engineering
118 N 2nd St.
St. Charles, MO 63301
Ph 636-724-9872
Fx 636-385-5059
WWW.DOTECENGINEERING.COM

DESIGN PROFESSIONAL
DO Tec Engineering
118 N 2nd St.
St. Charles, MO 63301
Ph 636-724-9872
Fx 636-385-5059
WWW.DOTECENGINEERING.COM

DESIGN PROFESSIONAL
DO Tec Engineering
118 N 2nd St.
St. Charles, MO 63301
Ph 636-724-9872
Fx 636-385-5059
WWW.DOTECENGINEERING.COM

DESIGN PROFESSIONAL
DO Tec Engineering
118 N 2nd St.
St. Charles, MO 63301
Ph 636-724-9872
Fx 636-385-5059
WWW.DOTECENGINEERING.COM

DESIGN PROFESSIONAL
DO Tec Engineering
118 N 2nd St.
St. Charles, MO 63301
Ph 636-724-9872
Fx 636-385-5059
WWW.DOTECENGINEERING.COM

DESIGN PROFESSIONAL
DO Tec Engineering
118 N 2nd St.
St. Charles, MO 63301
Ph 636-724-9872
Fx 636-385-5059
WWW.DOTECENGINEERING.COM

DESIGN PROFESSIONAL
DO Tec Engineering
118 N 2nd St.
St. Charles, MO 63301
Ph 636-724-9872
Fx 636-385-5059
WWW.DOTECENGINEERING.COM

DESIGN PROFESSIONAL
DO Tec Engineering
118 N 2nd St.
St. Charles, MO 63301
Ph 636-724-9872
Fx 636-385-5059
WWW.DOTECENGINEERING.COM

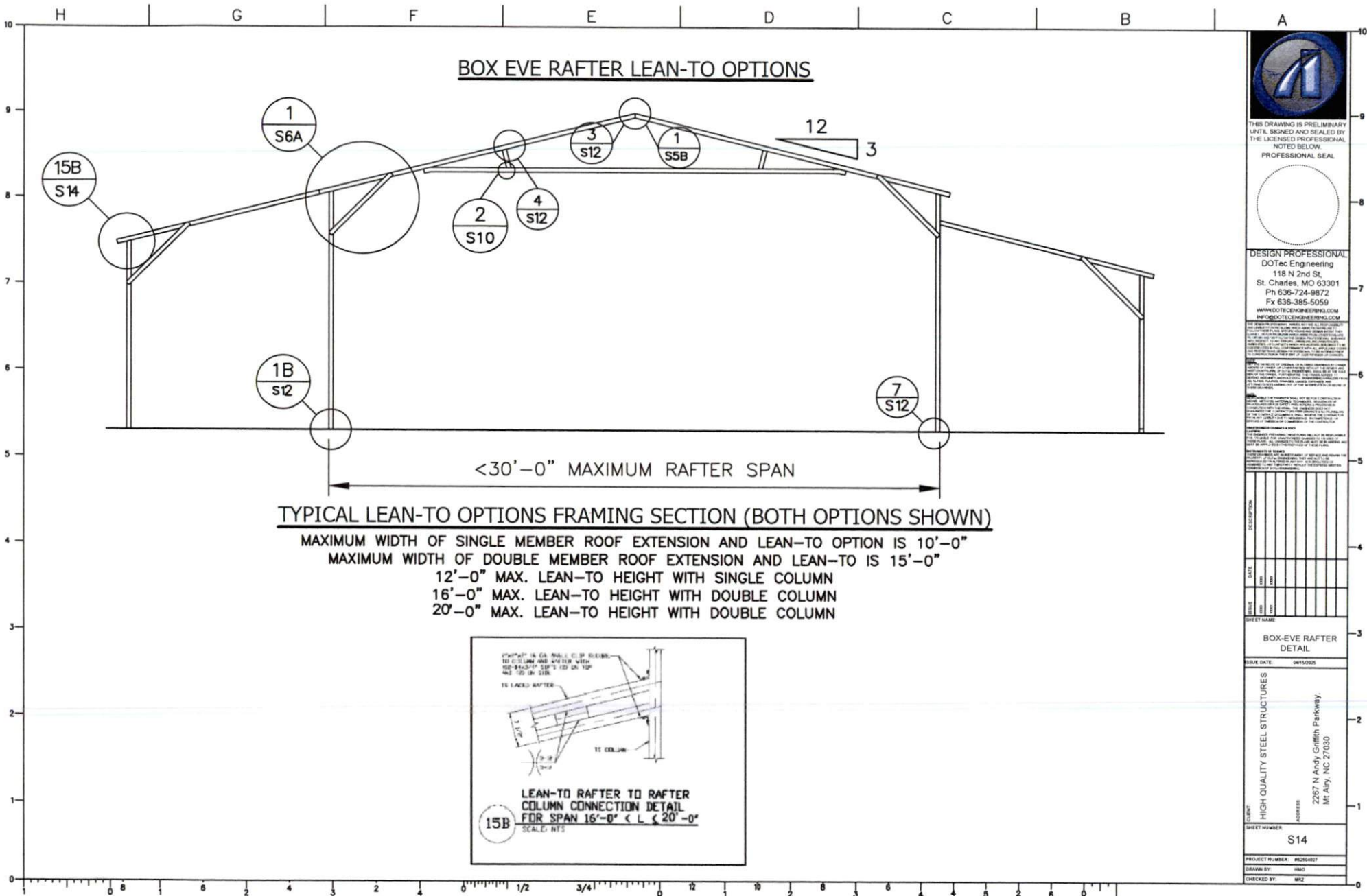
DESIGN PROFESSIONAL
DO Tec Engineering
118 N 2nd St.
St. Charles, MO 63301
Ph 636-724-9872
Fx 636-385-5059
WWW.DOTECENGINEERING.COM

DESIGN PROFESSIONAL
DO Tec Engineering
118 N 2nd St.
St. Charles, MO 63301
Ph 636-724-9872
Fx 636-385-5059
WWW.DOTECENGINEERING.COM

DESIGN PROFESSIONAL
DO Tec Engineering
118 N 2nd St.
St. Charles, MO 63301
Ph 636-724-9872
Fx 636-385-5059
WWW.DOTECENGINEERING.COM

DESIGN PROFESSIONAL
DO Tec Engineering
118 N 2nd St.
St. Charles, MO 63301
Ph 636-724-9872
Fx 636-385-5059
WWW.DOTECENGINEERING.COM

DESIGN PROFESSIONAL
DO Tec Engineering
118 N 2nd St.
St. Charles, MO 63301
Ph 636-724-9872
Fx 636-385-5059
WWW.DOTECENGINEERING.COM



THIS DRAWING IS PRELIMINARY
UNTIL SIGNED AND SEALED BY
THE LICENSED PROFESSIONAL
NOTED BELOW
PROFESSIONAL SEAL



DESIGN PROFESSIONAL
DOTec Engineering
118 N 2nd St.
St. Charles, MO 63301
Ph 636-724-9872
Fx 636-385-5059
WWW.DOTENGINEERING.COM
INFO@DOTENGINEERING.COM

THIS DRAWING IS PRELIMINARY
UNTIL SIGNED AND SEALED BY
THE LICENSED PROFESSIONAL
NOTED BELOW
PROFESSIONAL SEAL

THIS DRAWING IS PRELIMINARY
UNTIL SIGNED AND SEALED BY
THE LICENSED PROFESSIONAL
NOTED BELOW
PROFESSIONAL SEAL

THIS DRAWING IS PRELIMINARY
UNTIL SIGNED AND SEALED BY
THE LICENSED PROFESSIONAL
NOTED BELOW
PROFESSIONAL SEAL

THIS DRAWING IS PRELIMINARY
UNTIL SIGNED AND SEALED BY
THE LICENSED PROFESSIONAL
NOTED BELOW
PROFESSIONAL SEAL

THIS DRAWING IS PRELIMINARY
UNTIL SIGNED AND SEALED BY
THE LICENSED PROFESSIONAL
NOTED BELOW
PROFESSIONAL SEAL

THIS DRAWING IS PRELIMINARY
UNTIL SIGNED AND SEALED BY
THE LICENSED PROFESSIONAL
NOTED BELOW
PROFESSIONAL SEAL

THIS DRAWING IS PRELIMINARY
UNTIL SIGNED AND SEALED BY
THE LICENSED PROFESSIONAL
NOTED BELOW
PROFESSIONAL SEAL

THIS DRAWING IS PRELIMINARY
UNTIL SIGNED AND SEALED BY
THE LICENSED PROFESSIONAL
NOTED BELOW
PROFESSIONAL SEAL

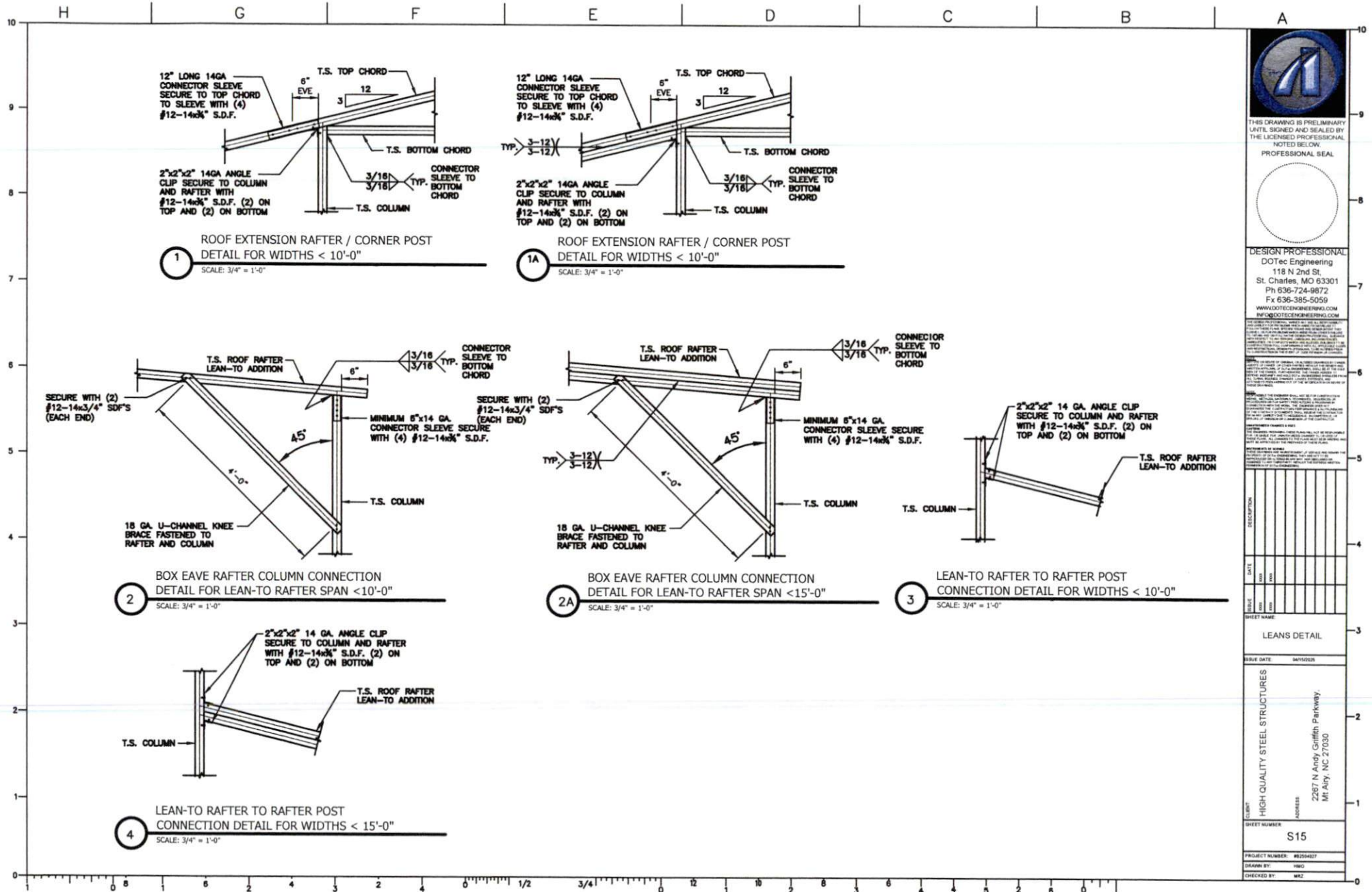
THIS DRAWING IS PRELIMINARY
UNTIL SIGNED AND SEALED BY
THE LICENSED PROFESSIONAL
NOTED BELOW
PROFESSIONAL SEAL

THIS DRAWING IS PRELIMINARY
UNTIL SIGNED AND SEALED BY
THE LICENSED PROFESSIONAL
NOTED BELOW
PROFESSIONAL SEAL

THIS DRAWING IS PRELIMINARY
UNTIL SIGNED AND SEALED BY
THE LICENSED PROFESSIONAL
NOTED BELOW
PROFESSIONAL SEAL

THIS DRAWING IS PRELIMINARY
UNTIL SIGNED AND SEALED BY
THE LICENSED PROFESSIONAL
NOTED BELOW
PROFESSIONAL SEAL

THIS DRAWING IS PRELIMINARY
UNTIL SIGNED AND SEALED BY
THE LICENSED PROFESSIONAL
NOTED BELOW
PROFESSIONAL SEAL



THIS DRAWING IS PRELIMINARY
UNLESS SIGNED AND SEALED BY
THE LICENSED PROFESSIONAL
NOTED BELOW.
PROFESSIONAL SEAL



DESIGN PROFESSIONAL
DOTec Engineering
118 N 2nd St.
St. Charles, MO 63301
Ph 636-724-9872
Fx 636-385-5059
WWW.DOTECENGINEERING.COM
INFO@DOTECENGINEERING.COM

DATE: 10/1/2017
BY: J. GRIFFIN
CHECKED BY: J. GRIFFIN
APPROVED BY: J. GRIFFIN

PROJECT: 2287 N Andy Griffin Parkway
MI Arty, NC 27030

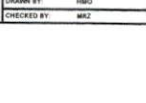
PROJECT NUMBER: 22870427
DRAWN BY: JWG
CHECKED BY: JWG

SHEET NUMBER
S15

PROJECT: 2287 N Andy Griffin Parkway
MI Arty, NC 27030

PROJECT: 2287 N Andy Griffin Parkway
MI Arty, NC 27030

PROJECT: 2287 N Andy Griffin Parkway
MI Arty, NC 27030



NOTE: THIS DRAWINGS ARE VALID FOR (1) CALENDER YEAR AFTER THE ISSUE DATE LISTED ON THE SHEET.