

STRUCTURAL DESIGN **ENCLOSED BUILDING**

MAXIMUM 30'- 0" WIDE X 20'- 0" HEIGHT-
BOX EAVE FRAME AND BOW FRAME

8 July 2022

Revision 0

M&A Project No. 22096S

Prepared for:

Unified Steel Structures, Inc.
154 N. Renfro Street Suite 100
Mount Airy, NC 27030

Prepared by:




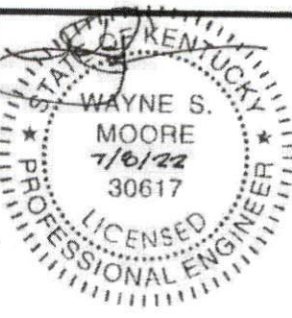




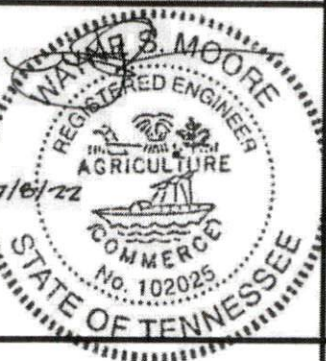
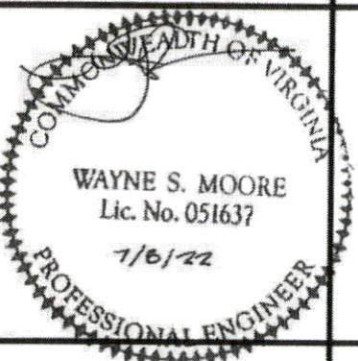
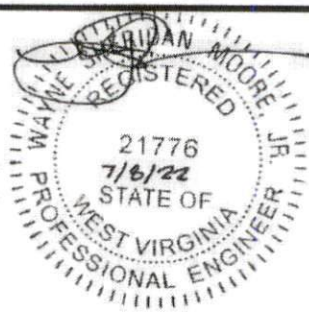
Moore and Associates Engineering and Consulting, Inc.

1009 East Avenue
North Augusta, SC 29841

401 S. Main Street, Suite 200
Mount Airy, NC 27030



Moore and Associates Engineering and Consulting, Inc. ("Moore & Associates") is the author and owner of all plans, drawings, specifications, etc. ("Instruments of Service") provided by it, and retains all common law, statutory, and other reserved rights, including without limitation copyrights. A limited license is granted to you for use of the Instruments of Service solely and exclusively in connection with the specific project for which the Instruments of Service were created by Moore & Associates. All other uses, including without limitation transfer to a third party, are strictly prohibited. Acceptance of the Instruments of Service constitutes your agreement to indemnify and to hold Moore & Associates harmless from all cost, expenses, damages, and attorney's fees arising from or relating to any unauthorized use or transfer of the Instruments of Service.

MOORE AND ASSOCIATES ENGINEERING AND CONSULTING, INC.		DRAWN BY: JG		UNIFIED STEEL STRUCTURES, INC. 154 N. RENFRO STREET SUITE 100 MOUNT AIRY, NC 27030 30-0"x20'-0" SP ENCLOSED STRUCTURE	
CHECKED BY: PDH		PROJECT MGR: WSM		DATE: 7-8-22	
CLIENT: USS		SHT. 1		SCALE: NTS	
		DWG. NO: SK-3		JOB NO: 22096S	
<small>THIS DOCUMENT IS THE PROPERTY OF MOORE AND ASSOCIATES ENGINEERING AND CONSULTING. THE UNAUTHORIZED REPRODUCTION, COPYING, OR OTHERWISE USE OF THIS DOCUMENT IS STRICTLY PROHIBITED AND ANY INFRINGEMENT THEREUPON MAY BE SUBJECT TO LEGAL ACTION.</small>				REV: 0	

DRAWING INDEX

SHEET 1	PE SEAL COVER SHEET
SHEET 2	DRAWING INDEX
SHEET 3	INSTALLATION NOTES AND SPECIFICATIONS
SHEET 3A	LIST OF APPLICABLE BUILDING CODES
SHEET 4	TYPICAL SIDE AND END ELEVATIONS
SHEET 5	TYPICAL INTERIOR RAFTER/COLUMN FRAMING SECTION (BOX EAVE RAFTER)
SHEET 5A	TYPICAL INTERIOR RAFTER/COLUMN AND SIDE FRAMING SECTION (BOX EAVE RAFTER)
SHEET 6	COLUMN CONNECTION DETAILS (BOX EAVE STRUCTURE)
SHEET 6A	COLUMN CONNECTION DETAILS (BOX EAVE STRUCTURE)
SHEET 7	TYPICAL INTERIOR RAFTER/COLUMN FRAMING SECTION (BOW RAFTER)
SHEET 7A	TYPICAL INTERIOR RAFTER/COLUMN AND SIDE FRAMING SECTION (BOW RAFTER)
SHEET 8	COLUMN CONNECTION DETAILS (BOW RAFTER STRUCTURE)
SHEET 8A	COLUMN CONNECTION DETAILS (BOW RAFTER STRUCTURE)
SHEET 9	BASE RAIL ANCHORAGE OPTIONS
SHEET 10	TYPICAL END WALL AND SIDE WALL FRAMING SECTIONS (BOX EAVE RAFTER)
SHEET 11	TYPICAL END WALL AND SIDE WALL FRAMING SECTIONS (BOW RAFTER)
SHEET 12	CONNECTION DETAILS
SHEET 13	CONNECTION DETAILS
SHEET 14	CONNECTION DETAILS
SHEET 15	BOX EAVE RAFTER LEAN-TO OPTIONS
SHEET 15A	BOX EAVE RAFTER LEAN-TO OPTION
SHEET 15B	BOX EAVE RAFTER LEAN-TO OPTIONS
SHEET 16	BOW RAFTER LEAN-TO OPTIONS
SHEET 16A	BOW RAFTER LEAN-TO OPTION
SHEET 17	BOX EAVE RAFTER VERTICAL ROOF/SIDING OPTION END AND SIDE ELEVATION AND SECTION
SHEET 18	HEADER OPTIONS

MOORE AND ASSOCIATES ENGINEERING AND CONSULTING, INC.	DRAWN BY: JG	UNIFIED STEEL STRUCTURES, INC. 154 N. RENFRO STREET SUITE 100 MOUNT AIRY, NC 27030 30'-0"x20'-0" SP ENCLOSED STRUCTURE		
	CHECKED BY: PDH			
<small>THIS DOCUMENT IS THE PROPERTY OF MOORE AND ASSOCIATES ENGINEERING AND CONSULTING. THE UNAUTHORIZED REPRODUCTION, COPYING, OR OTHERWISE USE OF THIS DOCUMENT IS STRICTLY PROHIBITED AND ANY INFRINGEMENT THEREUPON MAY BE SUBJECT TO LEGAL ACTION.</small>	PROJECT MGR: VSM	DATE: 7-8-88	SCALE: NTS	JOB NO: 82026S
	CLIENT: USS	SHT. 2	DWG. NO: SK-3	REV: 0

INSTALLATION NOTES AND SPECIFICATIONS

1. DESIGN IS FOR MAXIMUM 30'-0" WIDE x 20'-0" EAVE HEIGHT ENCLOSED STRUCTURES.
2. DESIGN WAS DONE IN ACCORDANCE WITH ALL THE APPLICABLE BUILDING CODES LISTED ON SHEET 3A.
3. DESIGN LOADS ARE AS FOLLOWS:
 - A) ROOF DEAD LOAD:
 - SELF-WEIGHT = 1.5 PSF
 - MEP = 0 PSF
 - COLLATERAL = 0 PSF
 - B) ROOF LIVE LOAD = 12 PSF
 - C) FLOOR LIVE LOAD = 100 PSF (4" CONCRETE SLAB-ON-GRADE)
 - D) GROUND SNOW LOAD = 35 PSF
 - = 30 PSF (W ≤ 24'-0" WITH U-CHANNEL RAFTER TIE)

NOTE: UNBALANCED LOADING DUE TO SNOW DRIFTING FROM AN ADJACENT TALLER STRUCTURE HAS NOT BEEN EVALUATED.
4. 3-SECOND GUST ULTIMATE WIND SPEED (V_{ULT}) 145 MPH (NOMINAL WIND SPEED 112 MPH).
5. MAXIMUM RAFTER/COLUMN AND END COLUMN SPACING = 5.0 FEET (UNLESS NOTED OTHERWISE).
6. END WALL COLUMNS (POSTS) ARE EQUIVALENT TO SIDE WALL COLUMNS IN SIZE AND SPACING (UNLESS NOTED OTHERWISE).
7. RISK CATEGORY I.
8. WIND EXPOSURE CATEGORY B/C.
9. STRUCTURAL ANALYSIS/DESIGN IS BASED ON TS MEETING THE REQUIREMENTS OF ASTM A653 GRADE 50 WITH MINIMUM YIELD STRENGTH (FY) OF 54 KSI AND GALVANIZING MEETING THE REQUIREMENTS OF G60.
10. SPECIFICATIONS APPLICABLE TO 29 GAUGE OR 26 GAUGE METAL PANELS FASTENED DIRECTLY TO 2 1/2"x2 1/2"-14 GAUGE TUBE STEEL (TS) FRAMING MEMBERS (UNLESS NOTED OTHERWISE). WHERE TS 2 1/2" x 2 1/2" - 14 GAUGE IS SPECIFIED, TS 2 1/4" x 2 1/4" - 12 GAUGE MAY BE USED AS AN OPTION.
11. CONNECTOR SLEEVES ARE MINIMUM 6' LONG, TS 2 1/4"x2 1/4"-14 GAUGE FOR 2 1/2"x2 1/2"-14 GAUGE (UNLESS NOTED OTHERWISE). WHERE 6' LONG TS 2 1/4"x2 1/4"-14 GAUGE CONNECTOR SLEEVE IS SPECIFIED, 6' LONG TS 2"x2"-12 GAUGE TS CONNECTOR SLEEVE MAY BE USED AS AN OPTION.
12. AVERAGE PANEL FASTENER SPACING ON-CENTERS = 9" O.C. (MAX.)
13. FASTENERS CONSIST OF #12-14x3/4" SELF-DRILLING FASTENER (SDF), USE CONTROL SEAL WASHER WITH EXTERIOR FASTENERS. SPECIFICATIONS APPLICABLE ONLY FOR MEAN ROOF HEIGHT OF 20 FEET OR LESS, AND ROOF SLOPES OF 14" (3:12 PITCH) OR LESS SPACING REQUIREMENTS FOR OTHER ROOF HEIGHTS AND/OR SLOPES MAY VARY. ROOF SLOPES LESS THAN 3:12 REQUIRE USE OF LAP JOINT SEALANT.
14. ANCHORS SHALL BE INSTALLED THROUGH BASE RAIL AT OR WITHIN 6' OF EVERY RAFTER COLUMN.
15. STANDARD GROUND ANCHORS (SOIL NAILS) CONSIST OF #4 REBAR W/ WELDED NUT x 36" LONG AND MAY BE USED IN SUITABLE SOILS. OPTIONAL ANCHORAGE MAY BE USED IN SUITABLE SOILS AND MUST BE USED IN UNSUITABLE SOILS AS NOTED.
16. CONTRACTOR TO PROVIDE ADEQUATE BRACING FOR STRUCTURE SO THAT IT WILL BE STABLE DURING ALL STAGES OF CONSTRUCTION. THE STRUCTURE AND FOUNDATION ARE DESIGNED FOR A COMPLETED CONDITION ONLY AND, THEREFORE, REQUIRE ADDITIONAL SUPPORT TO MAINTAIN STABILITY BEFORE COMPLETION.
17. WIND FORCES GOVERN OVER SEISMIC FORCES. SEISMIC PARAMETERS ANALYZED ARE:
 - SOIL SITE CLASS = D
 - RISK CATEGORY I
 - R = 3.25 $I_E = 1.0$
 - $S_{DS} = 2.625 g$ $V = C_s W$
 - $S_M = 2.13 g$
18. IF MORE THAN 50% OF COLUMN (LEG) ARE REMOVED IN ANY LONGITUDINAL (SIDE) WALLS OF A BUILDING, THE ENGINEER IS TO BE NOTIFIED TO DETERMINE WHETHER PORTAL FRAMES OR OTHER LONGITUDINAL STABILITY ELEMENTS WILL BE REQUIRED.
19. THIS MASTER DESIGN IS A GENERIC MASTER DESIGN PRIMARILY INTENDED FOR PLANT FABRICATION AND ERECTION ACHN TO SHOP DRAWINGS. THE MASTER DESIGN IS NOT PRIMARILY INTENDED FOR CONSTRUCTION PERMIT. WHEN APPLYING FOR BUILDING PERMIT, THE CERTIFIED BUILDING OFFICIAL MUST BE CONSULTED TO VERIFY WHETHER THE USE OF THE MASTER DESIGN IS ADEQUATE OR IF A SITE-SPECIFIC DESIGN IS REQUIRED FOR BUILDING PERMIT. ANY VARIATION FROM THE ANALYSIS/DESIGN PARAMETERS OF THE MASTER DESIGN REQUIRES THE DEVELOPMENT OF A SITE-SPECIFIC DESIGN.

**MOORE AND ASSOCIATES
ENGINEERING AND CONSULTING, INC.**

DRAWN BY: JG

CHECKED BY: PDH

PROJECT MGR: WSM

CLIENT: USS

UNIFIED STEEL STRUCTURES, INC.
154 N. RENFRO STREET SUITE 100
MOUNT AIRY, NC 27030
30-0"x20'-0" SP ENCLOSED STRUCTURE

THIS DOCUMENT IS THE PROPERTY OF MOORE AND ASSOCIATES ENGINEERING AND CONSULTING. THE UNAUTHORIZED REPRODUCTION, COPYING, OR OTHERWISE USE OF THIS DOCUMENT IS STRICTLY PROHIBITED AND ANY INFRINGEMENT THEREUPON MAY BE SUBJECT TO LEGAL ACTION.

DATE: 7-8-22

SHT. 3

SCALE: NTS

DWG. NO: SK-3

JOB NO: 220965

REV: 0

LIST OF APPLICABLE BUILDING CODES

2021 INTERNATIONAL BUILDING CODE (IBC 2021)

2018 INTERNATIONAL BUILDING CODE (IBC 2018)

2015 INTERNATIONAL BUILDING CODE (IBC 2015)

2012 INTERNATIONAL BUILDING CODE (IBC 2012)

BUILDING CODE 2021 OF ALABAMA
(ADOPTS THE IBC 2021 WITHOUT AMENDMENTS)
(IBC 2015, IBC 2018, IBC 2021 (DEPENDENT UPON LOCAL JURISDICTION))

GEORGIA STATE MINIMUM STANDARD BUILDING CODE
(ADOPTS THE IBC 2018 WITH AMENDMENTS)

2018 KENTUCKY BUILDING CODE
(ADOPTS THE IBC 2015 WITH AMENDMENTS)

2018 NORTH CAROLINA BUILDING CODE
(ADOPTS THE IBC 2015 WITH AMENDMENTS)

OHIO BUILDING CODE 2017
(ADOPTS THE IBC 2015 WITH AMENDMENTS)

2018 SOUTH CAROLINA BUILDING CODE
(ADOPTS THE IBC 2018 WITH AMENDMENTS)

BUILDING CODE 2012 OF TENNESSEE
(ADOPTS THE IBC 2012 WITH AMENDMENTS)
BUILDING CODE OF THE CITY OF KNOXVILLE
(ADOPTS THE IBC 2018 WITH AMENDMENTS)
BUILDING CODE 2018 OF NASHVILLE AND DAVIDSON
COUNTY (ADOPTS THE IBC 2018 WITH AMENDMENTS)

2018 VIRGINIA CONSTRUCTION CODE
(ADOPTS THE IBC 2018 WITH AMENDMENTS)

BUILDING CODE 2015 OF WEST VIRGINIA
(ADOPTS THE IBC 2015 WITH AMENDMENTS)

**MOORE AND ASSOCIATES
ENGINEERING AND CONSULTING, INC.**

DRAWN BY: JG

CHECKED BY: PDH

PROJECT MGR: VSM

CLIENT: USS

UNIFIED STEEL STRUCTURES, INC.
154 N. RENFRO STREET SUITE 100
MOUNT AIRY, NC 27030
30'-0" x 20'-0" SP ENCLOSED STRUCTURE

DATE: 7-8-22

SCALE: NTS

JOB NO: 220965

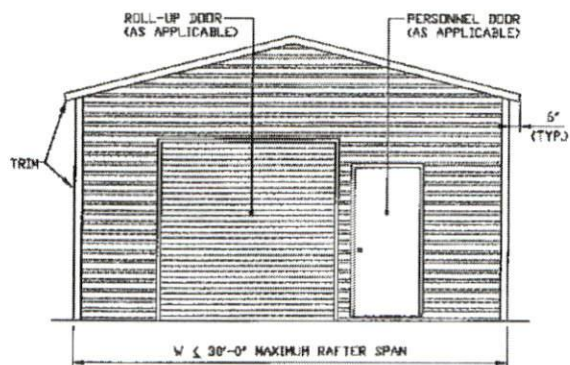
SHT. 3A

DWG. NO: SK-3

REV: 0

THIS DOCUMENT IS THE PROPERTY OF MOORE AND ASSOCIATES ENGINEERING AND CONSULTING. THE UNAUTHORIZED REPRODUCTION, COPYING, OR OTHERWISE USE OF THIS DOCUMENT IS STRICTLY PROHIBITED AND ANY INFRINGEMENT THEREUPON MAY BE SUBJECT TO LEGAL ACTION.

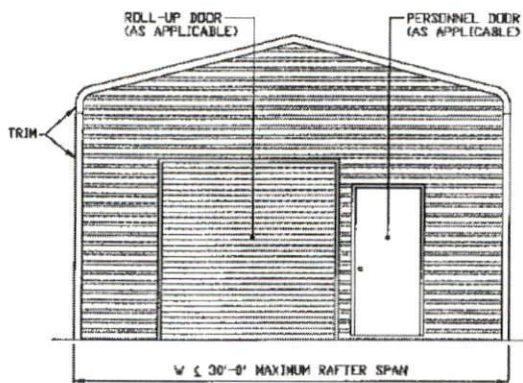
BOX EAVE FRAME RAFTER STRUCTURE



TYPICAL END ELEVATION

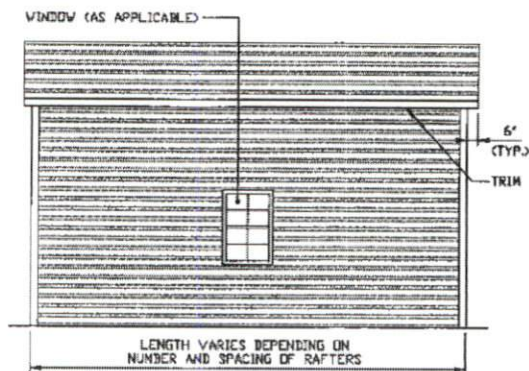
SCALE: NTS

BOW FRAME RAFTER STRUCTURE



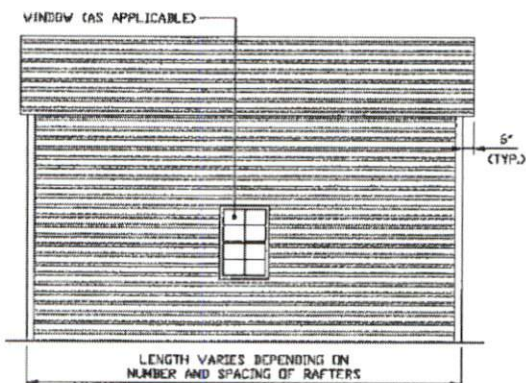
TYPICAL END ELEVATION

SCALE: NTS



TYPICAL SIDE ELEVATION

SCALE: NTS



TYPICAL SIDE ELEVATION

SCALE: NTS

**MOORE AND ASSOCIATES
ENGINEERING AND CONSULTING, INC.**

DRAWN BY: JG

CHECKED BY: PDM

PROJECT MGR: VSM

CLIENT: USS

UNIFIED STEEL STRUCTURES, INC.
154 N. RENFRO STREET SUITE 100
MOUNT AIRY, NC 27030
30'-0"x20'-0" SP ENCLOSED STRUCTURE

DATE: 7-8-22

SHT. 4

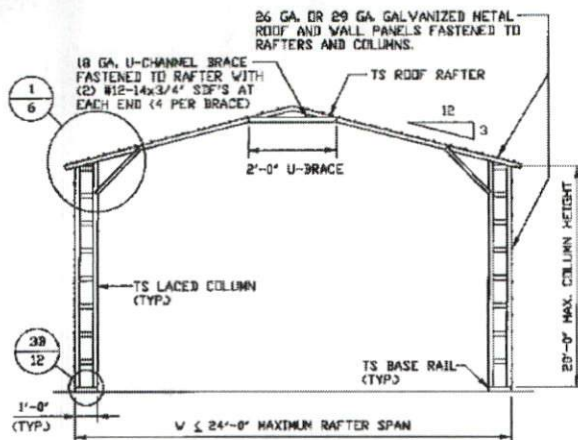
SCALE: NTS

DWG. NO: SK-3

JOB NO: B20265

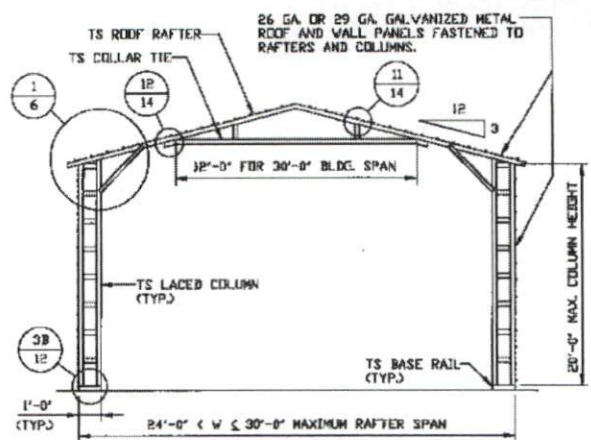
REV: 0

THIS DOCUMENT IS THE PROPERTY OF MOORE AND ASSOCIATES ENGINEERING AND CONSULTING, INC. THE UNAUTHORIZED REPRODUCTION, COPYING, OR OTHERWISE USE OF THIS DOCUMENT IS STRICTLY PROHIBITED AND ANY INFRINGEMENT THEREUPON MAY BE SUBJECT TO LEGAL ACTION.



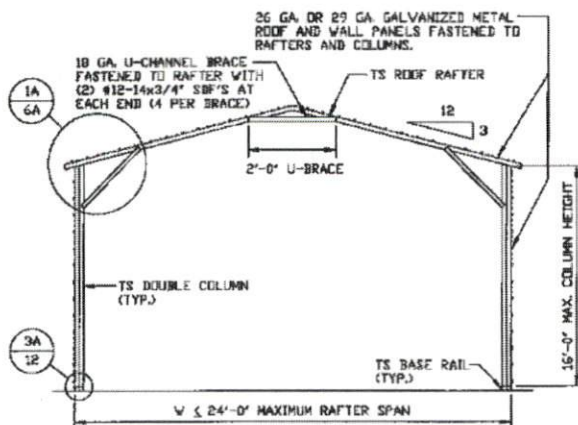
**TYPICAL INTERIOR RAFTER/
COLUMN FRAME SECTION**

SCALE: NTS



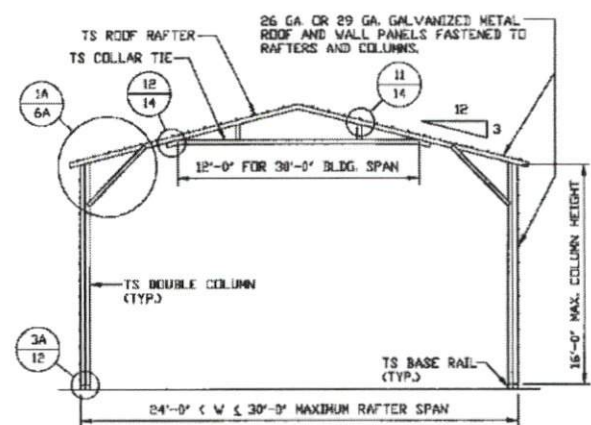
**TYPICAL INTERIOR RAFTER/
COLUMN FRAME SECTION**

SCALE: NTS



**TYPICAL INTERIOR RAFTER/
COLUMN FRAME SECTION**

SCALE: NTS



**TYPICAL INTERIOR RAFTER/
COLUMN FRAME SECTION**

SCALE: NTS

**MOORE AND ASSOCIATES
ENGINEERING AND CONSULTING, INC.**

DRAWN BY: JG

CHECKED BY: PMH

PROJECT MGR: WSM

CLIENT: USS

UNIFIED STEEL STRUCTURES, INC.
154 N. RENFRO STREET SUITE 100
MOUNT AIRY, NC 27030
30'-0"x20'-0" SP ENCLOSED STRUCTURE

DATE: 7-8-22

SHT. 5

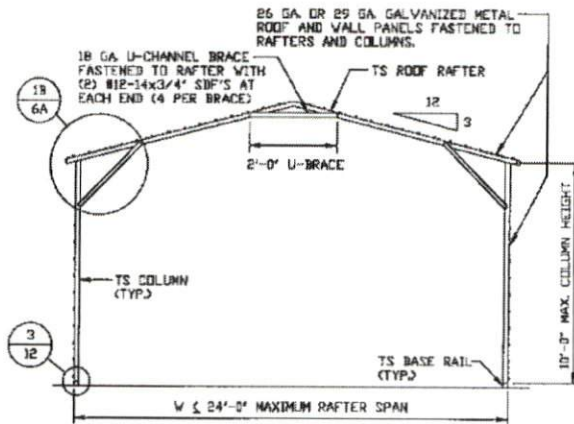
SCALE: NTS

DWG. NO: SK-3

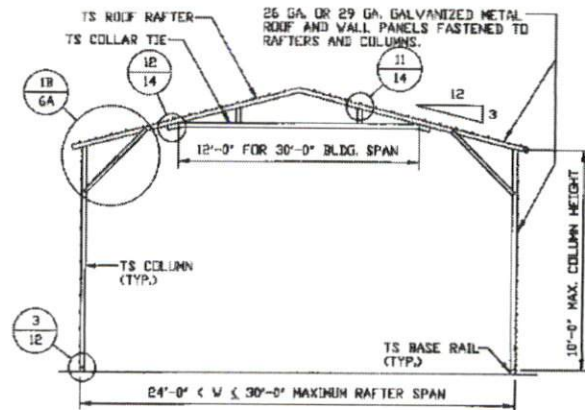
JOB NO: 220965

REV: 0

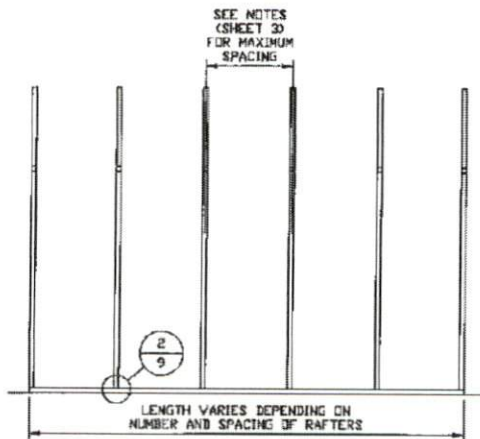
THIS DOCUMENT IS THE PROPERTY OF MOORE AND ASSOCIATES ENGINEERING AND CONSULTING. THE UNAUTHORIZED REPRODUCTION, COPYING, OR OTHERWISE USE OF THIS DOCUMENT IS STRICTLY PROHIBITED AND ANY INFRINGEMENT THEREUPON MAY BE SUBJECT TO LEGAL ACTION.



**TYPICAL INTERIOR RAFTER/
COLUMN FRAME SECTION**
SCALE: NTS



**TYPICAL INTERIOR RAFTER/
COLUMN FRAME SECTION**
SCALE: NTS



TYPICAL RAFTER/COLUMN SIDE FRAMING SECTION
SCALE: NTS

**MOORE AND ASSOCIATES
ENGINEERING AND CONSULTING, INC.**

DRAWN BY: JG

CHECKED BY: PDH

PROJECT MGR: VSM

CLIENT: USS

UNIFIED STEEL STRUCTURES, INC.
154 N. RENFRO STREET SUITE 100
MOUNT AIRY, NC 27030
30'-0"x20'-0" SP ENCLOSED STRUCTURE

DATE: 7-8-22

SHT. 5A

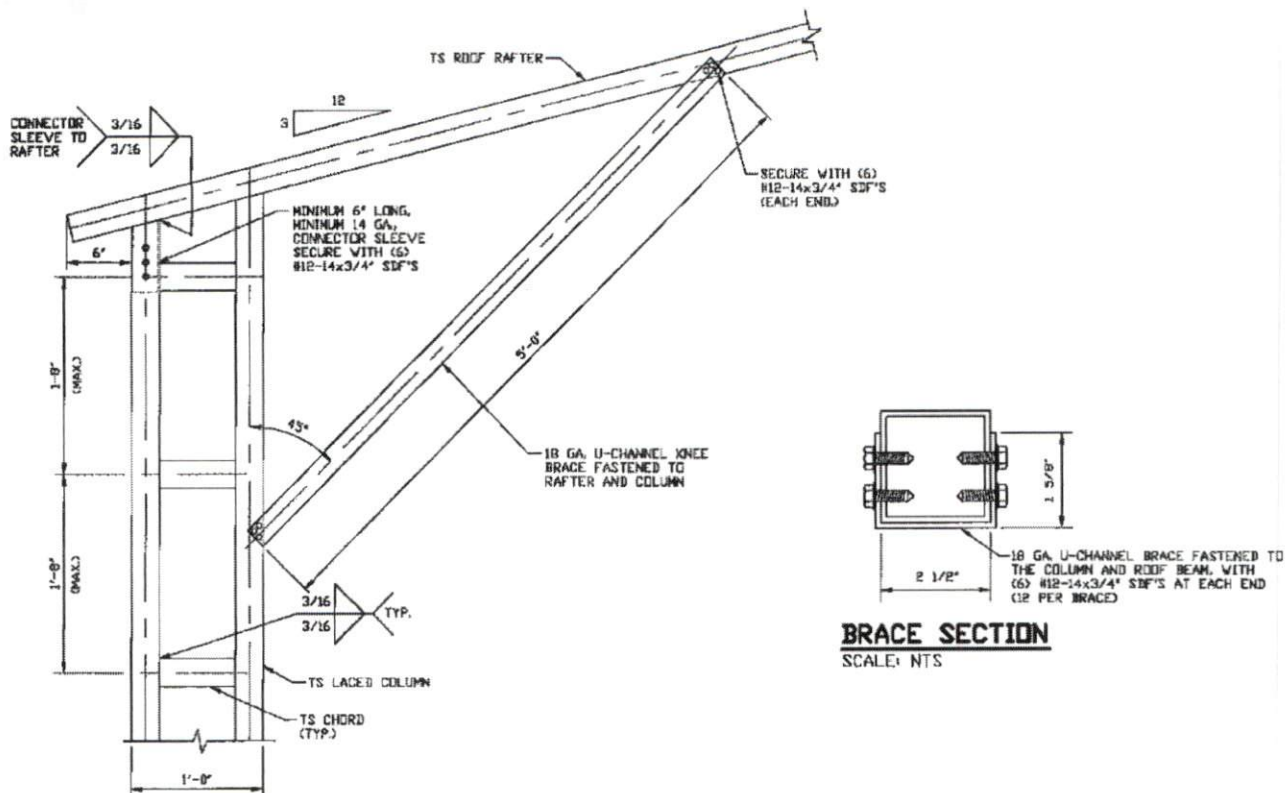
SCALE: NTS

DWG. NO. SK-3

JOB NO. R20965

REV. 0

THIS DOCUMENT IS THE PROPERTY OF MOORE AND ASSOCIATES ENGINEERING AND CONSULTING. THE UNAUTHORIZED REPRODUCTION, COPYING, OR OTHERWISE USE OF THIS DOCUMENT IS STRICTLY PROHIBITED AND ANY INFRINGEMENT THEREUPON MAY BE SUBJECT TO LEGAL ACTION.



1

**BOX EAVE RAFTER COLUMN CONNECTION
DETAIL FOR HEIGHTS 16'-0" < TO ≤ 20'-0"**

SCALE: NTS

BRACE SECTION

SCALE: NTS

**MOORE AND ASSOCIATES
ENGINEERING AND CONSULTING, INC.**

DRAWN BY: JG

CHECKED BY: PDH

PROJECT MGR: VSM

CLIENT: USS

UNIFIED STEEL STRUCTURES, INC.
154 N. RENFRO STREET SUITE 100
MOUNT AIRY, NC 27030
30'-0"x20'-0" SP ENCLOSED STRUCTURE

DATE: 7-8-82

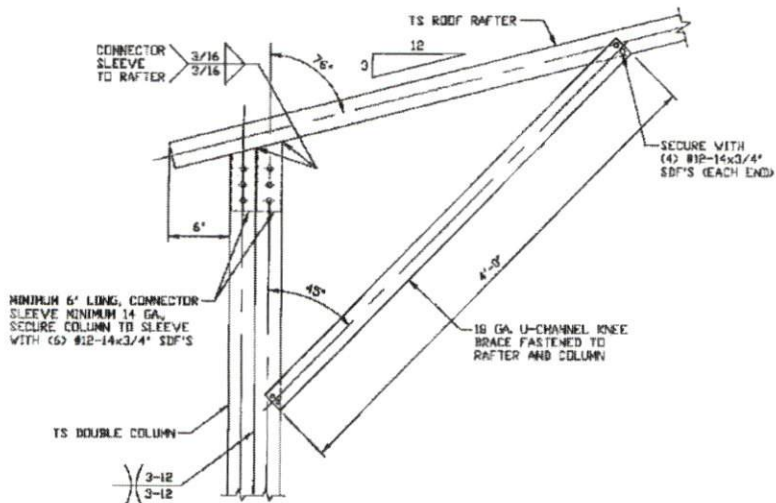
SCALE: NTS

JOB NO: 220965

DWG. NO: SK-3

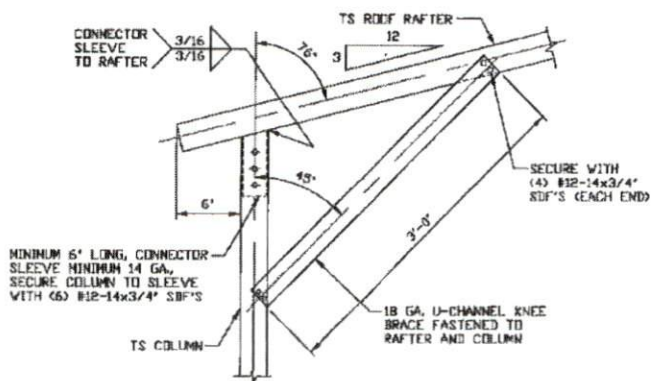
REV: 0

THIS DOCUMENT IS THE PROPERTY OF MOORE AND ASSOCIATES ENGINEERING AND CONSULTING. THE UNAUTHORIZED REPRODUCTION, COPYING, OR OTHERWISE USE OF THIS DOCUMENT IS STRICTLY PROHIBITED AND ANY INFRINGEMENT THEREUPON MAY BE SUBJECT TO LEGAL ACTION.



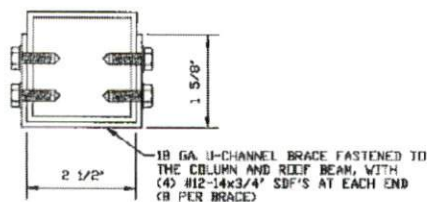
**BOX EAVE RAFTER COLUMN
CONNECTION DETAIL FOR
HEIGHTS 10'-0" < TO ≤ 16'-0"**
SCALE: NTS

1A



**BOX EAVE RAFTER COLUMN
CONNECTION DETAIL FOR
HEIGHTS ≤ 10'-0"**
SCALE: NTS

1B



BRACE SECTION
SCALE: NTS

MOORE AND ASSOCIATES
ENGINEERING AND CONSULTING, INC.

DRAWN BY: JG

CHECKED BY: PDH

PROJECT MGR: WSM

CLIENT: USS

UNIFIED STEEL STRUCTURES, INC.
154 N. RENFRO STREET SUITE 100
MOUNT AIRY, NC 27030
30'-0"x20'-0" SP ENCLOSED STRUCTURE

DATE: 7-8-82

SCALE: NTS

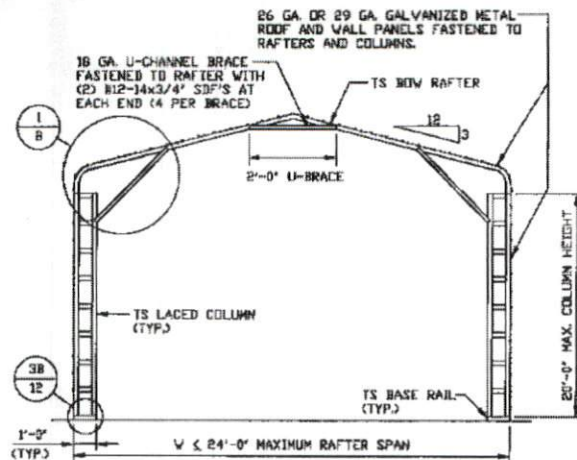
JOB NO: 220265

SHT. 6A

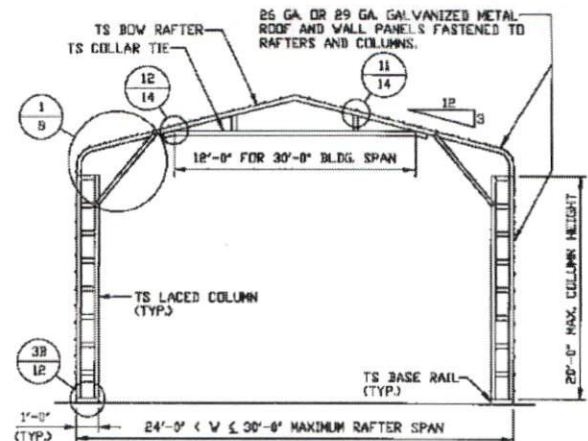
DWG. NO: SK-3

REV: 0

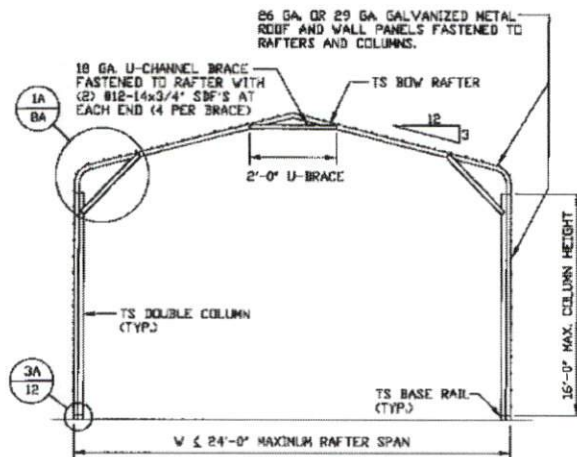
THIS DOCUMENT IS THE PROPERTY OF MOORE AND ASSOCIATES ENGINEERING AND CONSULTING, INC. UNAUTHORIZED REPRODUCTION, COPYING, OR OTHERWISE USE OF THIS DOCUMENT IS STRICTLY PROHIBITED AND ANY INFRINGEMENT THEREUPON MAY BE SUBJECT TO LEGAL ACTION.



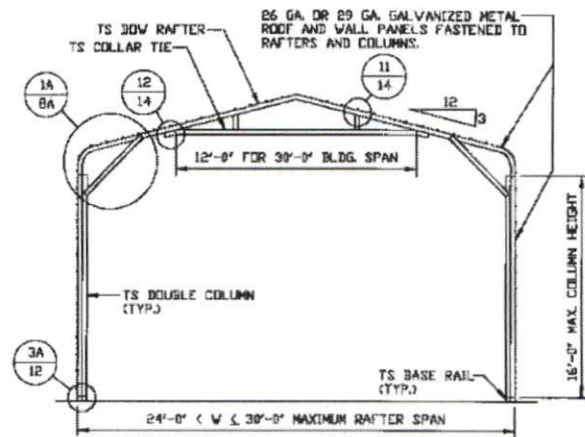
**TYPICAL INTERIOR RAFTER/
COLUMN FRAME SECTION**
SCALE: NTS



**TYPICAL INTERIOR RAFTER/
COLUMN FRAME SECTION**
SCALE: NTS



**TYPICAL INTERIOR RAFTER/
COLUMN FRAME SECTION**
SCALE: NTS



**TYPICAL INTERIOR RAFTER/
COLUMN FRAME SECTION**
SCALE: NTS

**MOORE AND ASSOCIATES
ENGINEERING AND CONSULTING, INC.**

DRAWN BY: JG

CHECKED BY: PDH

PROJECT MGR: VSM

CLIENT: USS

UNIFIED STEEL STRUCTURES, INC.
154 N. RENFRO STREET SUITE 100
MOUNT AIRY, NC 27030
30'-0"x20'-0" SP ENCLOSED STRUCTURE

DATE: 7-9-22

SCALE: NTS

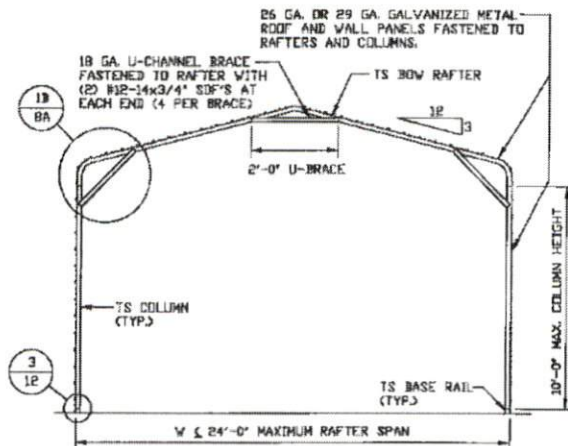
JOB NO: 22096S

SHT. 7

DWG. NO: SK-3

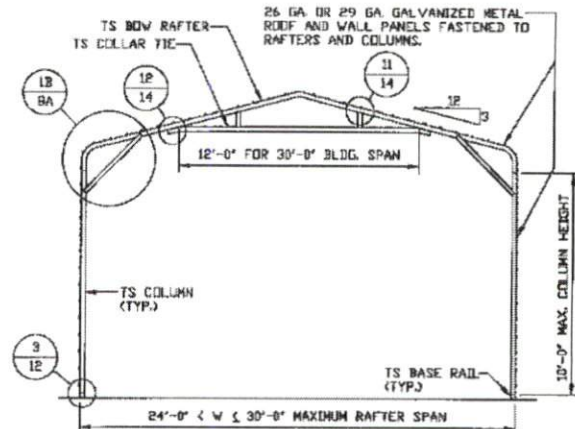
REV: 0

THIS DOCUMENT IS THE PROPERTY OF MOORE AND ASSOCIATES ENGINEERING AND CONSULTING. THE UNAUTHORIZED REPRODUCTION, COPYING, OR OTHERWISE USE OF THIS DOCUMENT IS STRICTLY PROHIBITED AND ANY INFRINGEMENT THEREUPON MAY BE SUBJECT TO LEGAL ACTION.



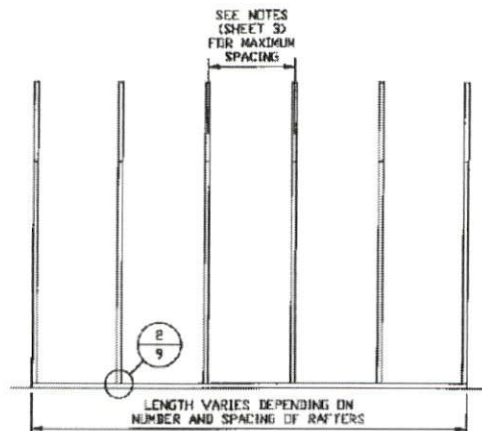
**TYPICAL INTERIOR RAFTER/
COLUMN FRAME SECTION**

SCALE: NTS



**TYPICAL INTERIOR RAFTER/
COLUMN FRAME SECTION**

SCALE: NTS



TYPICAL RAFTER/COLUMN FRAMING SIDE SECTION

SCALE: NTS

**MOORE AND ASSOCIATES
ENGINEERING AND CONSULTING, INC.**

DRAWN BY: JG

CHECKED BY: PMH

PROJECT MGR: VSM

CLIENT: USS

UNIFIED STEEL STRUCTURES, INC.
154 N. RENFRO STREET SUITE 100
MOUNT AIRY, NC 27030
30'-0"x20'-0" SP ENCLOSED STRUCTURE

DATE: 7-8-22

SHT. 7A

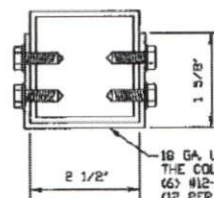
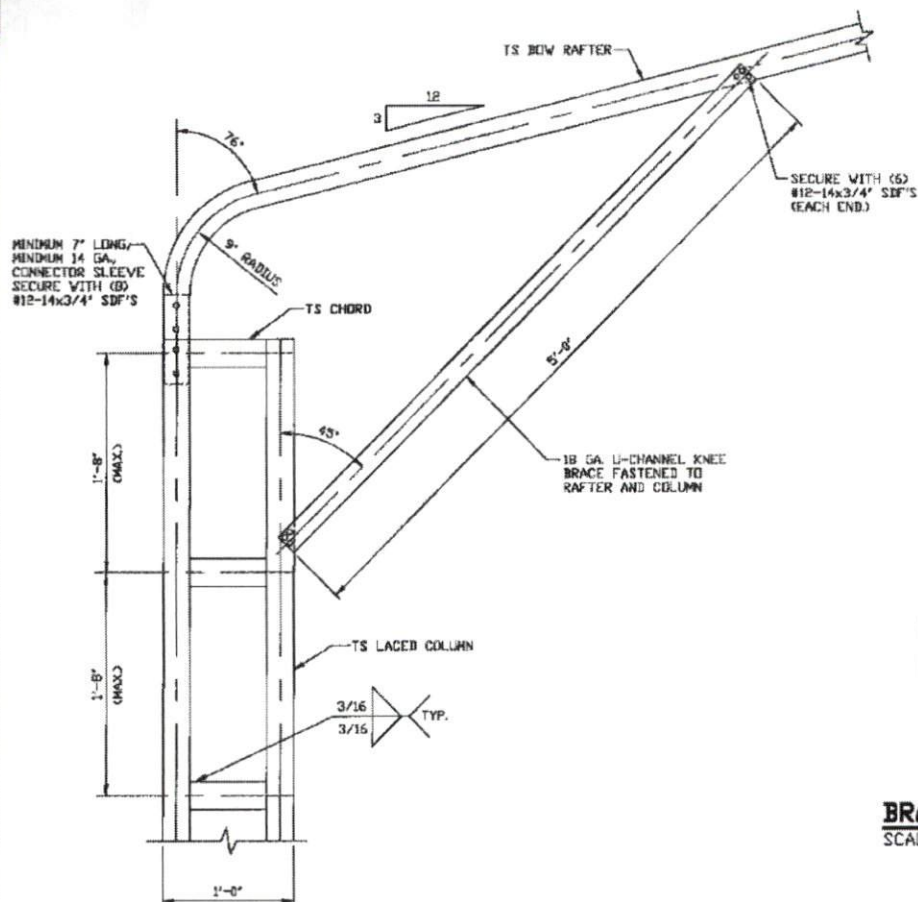
SCALE: NTS

DWG. NO: SK-3

JOB NO: 220265

REV: 0

THIS DOCUMENT IS THE PROPERTY OF MOORE AND ASSOCIATES ENGINEERING AND CONSULTING, INC. THE UNAUTHORIZED REPRODUCTION, COPYING, OR OTHERWISE USE OF THIS DOCUMENT IS STRICTLY PROHIBITED AND ANY INFRINGEMENT THEREUPON MAY BE SUBJECT TO LEGAL ACTION.



BRACE SECTION

SCALE: NTS

1 BOW RAFTER COLUMN CONNECTION DETAIL
FOR HEIGHTS 16'-0" < TO ≤ 20'-0"
SCALE: NTS

**MOORE AND ASSOCIATES
ENGINEERING AND CONSULTING, INC.**

DRAWN BY: JG

CHECKED BY: PDH

PROJECT MGR: WSM

CLIENT: USS

UNIFIED STEEL STRUCTURES, INC.
154 N. RENFRO STREET SUITE 100
MOUNT AIRY, NC 27030
30'-0"x20'-0" SP ENCLOSED STRUCTURE

DATE: 7-8-82

SCALE: NTS

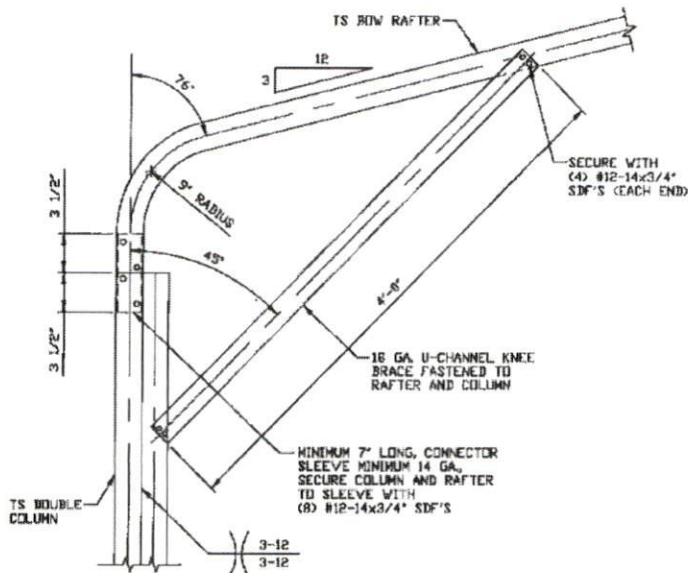
JOB NO: 22096S

SHT. 8

DWG. NO: SK-3

REV: 0

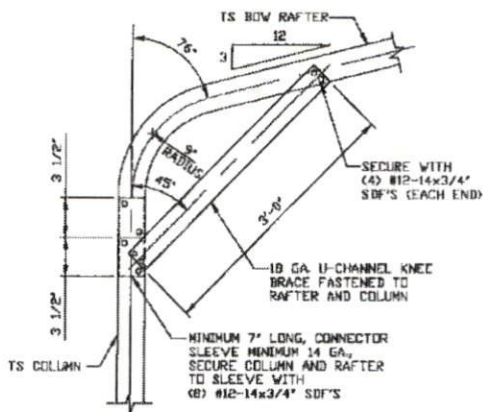
THIS DOCUMENT IS THE PROPERTY OF MOORE AND ASSOCIATES ENGINEERING AND CONSULTING. THE UNAUTHORIZED REPRODUCTION, COPYING, OR OTHERWISE USE OF THIS DOCUMENT IS STRICTLY PROHIBITED AND ANY INFRINGEMENT THEREUPON MAY BE SUBJECT TO LEGAL ACTION.



**BOX EAVE RAFTER COLUMN
CONNECTION DETAIL FOR
HEIGHTS 10'-0" < TO ≤ 16'-0"**

1A

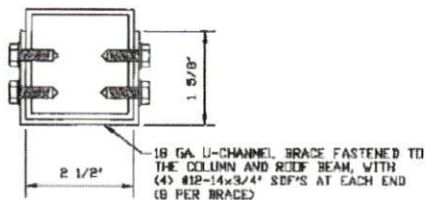
SCALE: NTS



**BOX EAVE RAFTER COLUMN
CONNECTION DETAIL FOR
HEIGHTS ≤ 10'-0"**

1B

SCALE: NTS



BRACE SECTION

SCALE: NTS

**MOORE AND ASSOCIATES
ENGINEERING AND CONSULTING, INC.**

DRAWN BY: JG

CHECKED BY: PDH

PROJECT MGR: VSM

CLIENT: USS

UNIFIED STEEL STRUCTURES, INC.
154 N. RENFRO STREET SUITE 100
MOUNT AIRY, NC 27030
30'-0" x 20'-0" SP ENCLOSED STRUCTURE

DATE: 7-8-22

SCALE: NTS

JOB NO: 220963

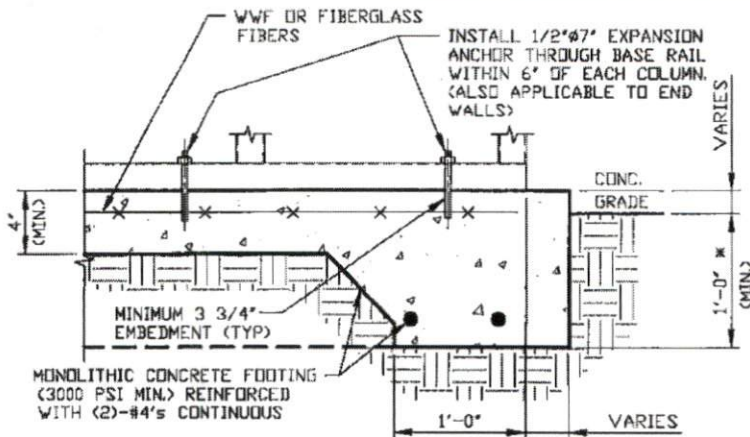
SHT. 8A

DWG. NO: SK-3

REV: 0

THIS DOCUMENT IS THE PROPERTY OF MOORE AND ASSOCIATES ENGINEERING AND CONSULTING. THE UNAUTHORIZED REPRODUCTION, COPYING, OR OTHERWISE USE OF THIS DOCUMENT IS STRICTLY PROHIBITED AND ANY INFRACTION THEREUPON MAY BE SUBJECT TO LEGAL ACTION.

BASE RAIL ANCHORAGE OPTIONS



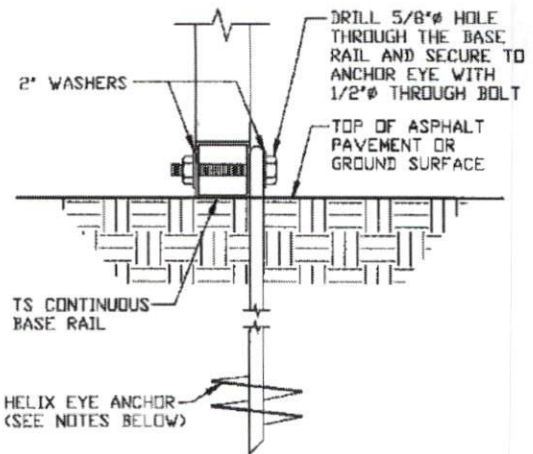
2

CONCRETE MONOLITHIC SLAB BASE RAIL ANCHORAGE

SCALE: NTS

MINIMUM ANCHOR EDGE DISTANCE IS 4".

* COORDINATE WITH LOCAL BUILDING CODES/ORD. REGARDING REQUIRED FOOTING DEPTH.



2A

GROUND BASE HELIX ANCHORAGE

SCALE: NTS (CAN BE USED FOR ASPHALT)

* COORDINATE WITH LOCAL CODES/ORD. REGARDING REQUIRED ANCHOR LENGTH.

GENERAL NOTES

NOTE: CONCRETE MONOLITHIC SLAB DESIGN BASED ON MINIMUM SOIL BEARING CAPACITY OF 1,500 PSF.

CONCRETE:

CONCRETE SHALL HAVE A MINIMUM SPECIFIED COMPRESSIVE STRENGTH OF 3,000 PSI AT 28 DAYS.

COVER OVER REINFORCING STEEL:

FOR FOUNDATIONS, MINIMUM CONCRETE COVER OVER REINFORCING BARS SHALL BE PER ACI-318.

3" IN FOUNDATIONS WHERE THE CONCRETE IS CAST AGAINST AND PERMANENTLY IN CONTACT WITH THE EARTH OR EXPOSED TO THE EARTH OR WEATHER, AND 1 1/2" ELSEWHERE.

REINFORCING STEEL:

THE TURNDOWN REINFORCING STEEL SHALL BE ASTM A615 GRADE 60. THE SLAB REINFORCEMENT SHALL BE WELDED WIRE FABRIC MEETING ASTM A185 OR FIBERGLASS FIBER REINFORCEMENT.

REINFORCEMENT MAY BE BENT IN THE SHOP OR THE FIELD PROVIDED:

1. REINFORCEMENT IS BENT COLD.
2. THE DIAMETER OF THE BEND, MEASURED ON THE INSIDE OF THE BAR, IS NOT LESS THAN SIX-BAR DIAMETERS.
3. REINFORCEMENT PARTIALLY EMBEDDED IN CONCRETE SHALL NOT BE FIELD BENT.

HELIX ANCHOR NOTES:

1. FOR VERY DENSE AND/OR CEMENTED SANDS, COARSE GRAVEL AND COBBLES, CALICHE, PRELOADED SILTS AND CLAYS, USE MINIMUM (2) 4" HELICES WITH MINIMUM 30" EMBEDMENT OR SINGLE 6" HELIX WITH MINIMUM 50" EMBEDMENT.
2. FOR CORAL USE MINIMUM (2) 4" HELICES WITH MINIMUM 30" EMBEDMENT OR SINGLE 6" HELIX WITH MINIMUM 50" EMBEDMENT.
3. FOR MEDIUM DENSE COARSE SANDS, SANDY GRAVELS, VERY STIFF SILTS, AND CLAYS USE MINIMUM (2) 4" HELICES WITH MINIMUM 30 INCH EMBEDMENT OR SINGLE 6" HELIX WITH MINIMUM 50" EMBEDMENT.
4. FOR LOOSE TO MEDIUM DENSE SANDS, FIRM TO STIFF CLAYS AND SILTS ALLUVIAL FILL, USE MINIMUM (2) 6" HELICES WITH MINIMUM 50" EMBEDMENT.
5. FOR VERY LOSE TO MEDIUM DENSE SANDS, FIRM TO STIFFER CLAYS AND SILTS, ALLUVIAL FILL, USE MINIMUM (2) 8" HELICES WITH MINIMUM 60" EMBEDMENT.

**MOORE AND ASSOCIATES
ENGINEERING AND CONSULTING, INC.**

DRAWN BY: JG

CHECKED BY: PDH

PROJECT MGR: WSM

CLIENT: USS

UNIFIED STEEL STRUCTURES, INC.
154 N. RENFRO STREET SUITE 100
MOUNT AIRY, NC 27030
30'-0"x20'-0" SP ENCLOSED STRUCTURE

DATE: 7-8-22

SHT. 9

SCALE: NTS

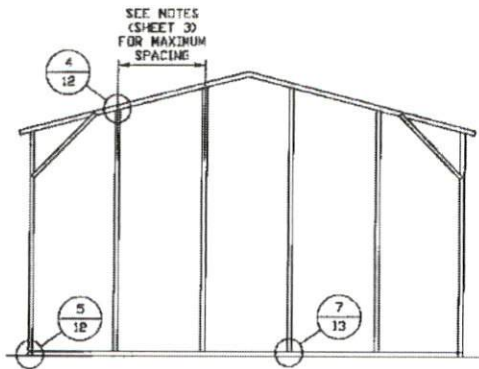
DWG. NO: SK-3

JOB NO: 220265

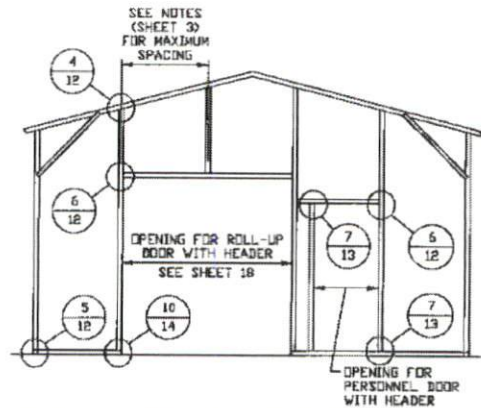
REV: 0

THIS DOCUMENT IS THE PROPERTY OF MOORE AND ASSOCIATES ENGINEERING AND CONSULTING. THE UNAUTHORIZED REPRODUCTION, COPYING, OR OTHERWISE USE OF THIS DOCUMENT IS STRICTLY PROHIBITED AND ANY INFRINGEMENT THEREUPON MAY BE SUBJECT TO LEGAL ACTION.

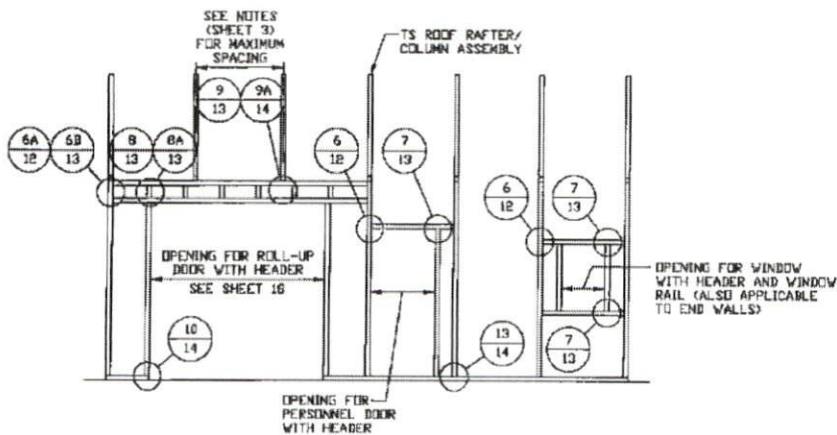
TYPICAL END WALL AND SIDE WALL FRAMING SECTIONS (BOX EAVE RAFTER)



**TYPICAL BOX EAVE RAFTER
END WALL FRAMING SECTION**
SCALE: NTS



**TYPICAL BOX EAVE RAFTER END
WALL OPENINGS FRAMING SECTION**
SCALE: NTS



**TYPICAL BOX EAVE RAFTER
SIDE WALL OPENINGS FRAMING SECTION**
SCALE: NTS

**MOORE AND ASSOCIATES
ENGINEERING AND CONSULTING, INC.**

DRAWN BY: JG

CHECKED BY: PDH

PROJECT MGR: VSM

CLIENT: USS

UNIFIED STEEL STRUCTURES, INC.
154 N. RENFRO STREET SUITE 100
MOUNT AIRY, NC 27030
30'-0"x20'-0" SP ENCLOSED STRUCTURE

DATE: 7-8-22

SCALE: NTS

JOB NO: 22096S

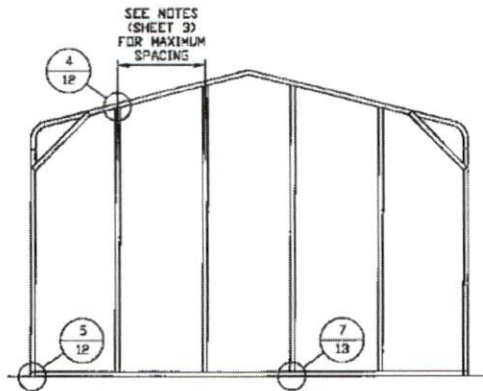
SHT. 30

DWG. NO: SK-3

REV: 0

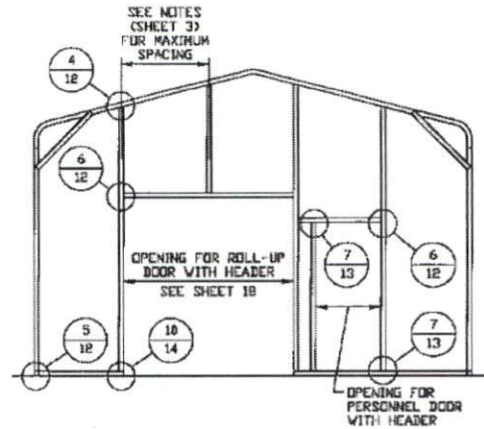
THIS DOCUMENT IS THE PROPERTY OF MOORE AND ASSOCIATES ENGINEERING AND CONSULTING. THE UNAUTHORIZED REPRODUCTION, COPYING, OR OTHERWISE USE OF THIS DOCUMENT IS STRICTLY PROHIBITED AND ANY INFRINGEMENT THEREUPON MAY BE SUBJECT TO LEGAL ACTION.

TYPICAL END WALL AND SIDE WALL FRAMING SECTIONS (BOW RAFTER)



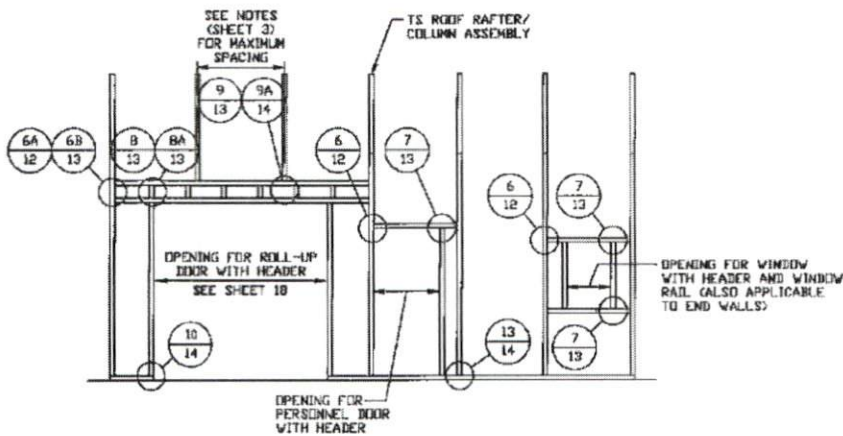
**TYPICAL BOW RAFTER
END WALL FRAMING SECTION**

SCALE: NTS



**TYPICAL BOW RAFTER END
WALL OPENINGS FRAMING SECTION**

SCALE: NTS



**TYPICAL BOW RAFTER SIDE
WALL OPENINGS FRAMING SECTION**

SCALE: NTS

**MOORE AND ASSOCIATES
ENGINEERING AND CONSULTING, INC.**

DRAWN BY: JG

CHECKED BY: PDH

PROJECT MGR: VSH

CLIENT: USS

UNIFIED STEEL STRUCTURES, INC.
154 N. RENFRO STREET SUITE 100
MOUNT AIRY, NC 27030
30'-0"x20'-0" SP ENCLOSED STRUCTURE

DATE: 7-8-22

SCALE: NTS

JOB NO: 220265

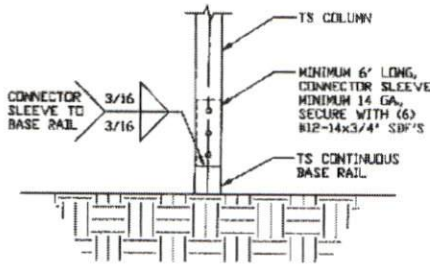
SHT. 11

DWG. NO: SK-3

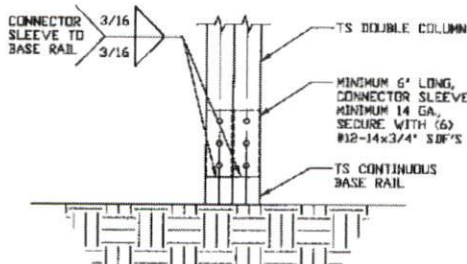
REV: 0

THIS DOCUMENT IS THE PROPERTY OF MOORE AND ASSOCIATES ENGINEERING AND CONSULTING. THE UNAUTHORIZED REPRODUCTION, COPYING, OR OTHERWISE USE OF THIS DOCUMENT IS STRICTLY PROHIBITED AND ANY INFRINGEMENT THEREUPON MAY BE SUBJECT TO LEGAL ACTION.

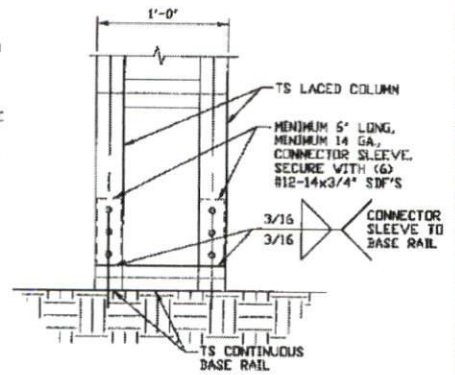
CONNECTION DETAILS



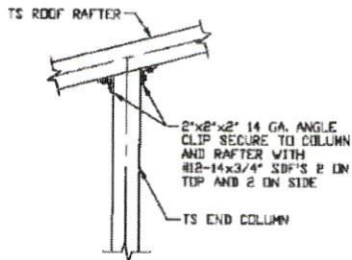
3 RAFTER COLUMN/
BASE RAIL
CONNECTION DETAIL
SCALE: NTS



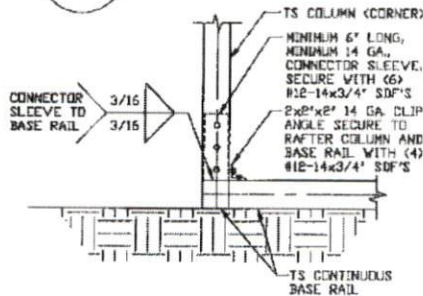
3A RAFTER COLUMN/
BASE RAIL
CONNECTION DETAIL
SCALE: NTS



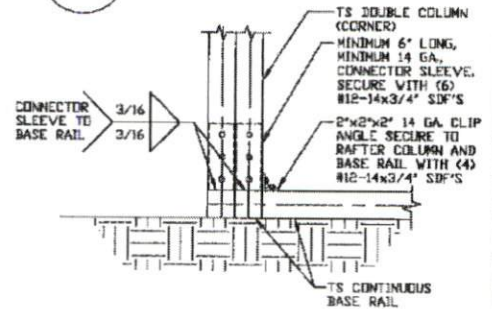
3B RAFTER COLUMN/
BASE RAIL
CONNECTION DETAIL
SCALE: NTS



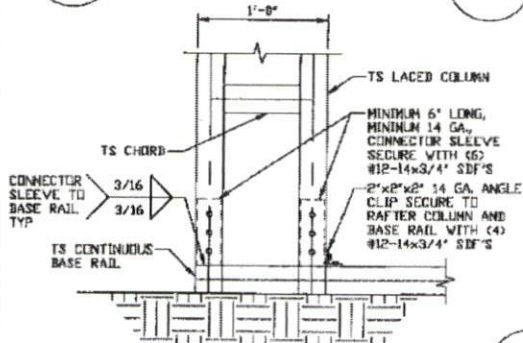
4 END COLUMN/RAFTER
CONNECTION DETAIL
SCALE: NTS



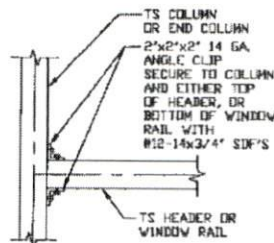
5 END COLUMN/BASE RAIL
CONNECTION DETAIL
SCALE: NTS



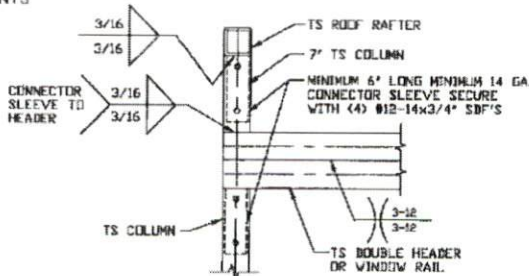
5A END COLUMN/BASE RAIL
CONNECTION DETAIL
SCALE: NTS



5B END COLUMN/BASE RAIL
CONNECTION DETAIL
SCALE: NTS



6 COLUMN OR WINDOW
RAIL TO POST
CONNECTION DETAIL
SCALE: NTS



6A DOUBLE HEADER TO COLUMN
CONNECTION DETAIL
SCALE: NTS

MOORE AND ASSOCIATES
ENGINEERING AND CONSULTING, INC.

DRAWN BY: JG

CHECKED BY: PDH

PROJECT MGR: VSM

CLIENT: USS

UNIFIED STEEL STRUCTURES, INC.
154 N. RENFRO STREET SUITE 100
MOUNT AIRY, NC 27030
30'-0\"/>

DATE: 7-8-22

SCALE: NTS

JOB NO: B2096S

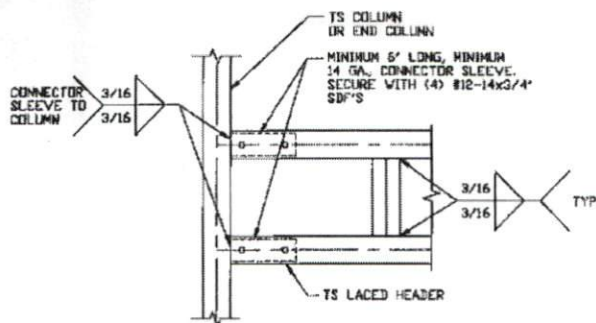
SHT. 12

DWG. NO: SK-3

REV: 0

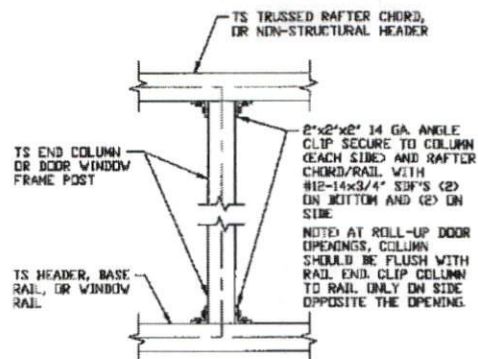
THIS DOCUMENT IS THE PROPERTY OF MOORE AND ASSOCIATES ENGINEERING AND CONSULTING. THE UNAUTHORIZED REPRODUCTION, COPYING, OR OTHERWISE USE OF THIS DOCUMENT IS STRICTLY PROHIBITED AND ANY INFRINGEMENT THEREUPON MAY BE SUBJECT TO LEGAL ACTION.

CONNECTION DETAILS



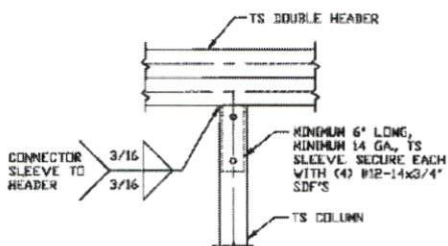
6B
**LACED HEADER
TO COLUMN
CONNECTION DETAIL**

SCALE: NTS



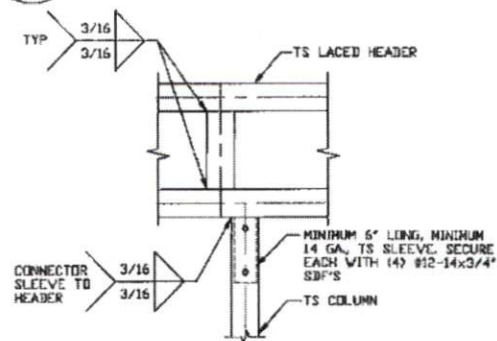
7
**COLUMN TO WINDOW RAIL
CONNECTION DETAIL**

SCALE: NTS



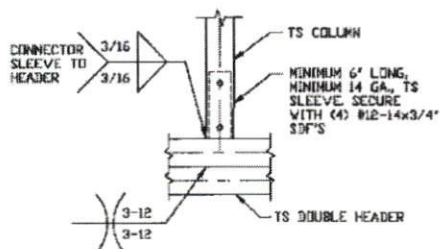
8
**DOUBLE HEADER/
COLUMN
CONNECTION DETAIL**

SCALE: NTS



8A
**LACED HEADER/
COLUMN
CONNECTION DETAIL**

SCALE: NTS



9
**COLUMN/
DOUBLE HEADER
CONNECTION DETAIL**

SCALE: NTS

**MOORE AND ASSOCIATES
ENGINEERING AND CONSULTING, INC.**

DRAWN BY: JG

CHECKED BY: PMH

PROJECT MGR: VSM

CLIENT: USS

UNIFIED STEEL STRUCTURES, INC.
154 N. RENFRO STREET SUITE 100
MOUNT AIRY, NC 27030
30'-0"x20'-0" SP ENCLOSED STRUCTURE

DATE: 7-8-22

SHT. 13

SCALE: NTS

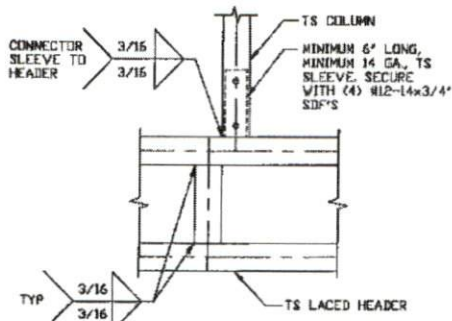
DWG. NO: SK-3

JOB NO: 220965

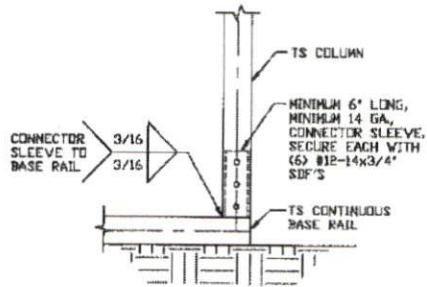
REV: 0

THIS DOCUMENT IS THE PROPERTY OF MOORE AND ASSOCIATES ENGINEERING AND CONSULTING. THE UNAUTHORIZED REPRODUCTION, COPYING, OR OTHERWISE USE OF THIS DOCUMENT IS STRICTLY PROHIBITED AND ANY INFRINGEMENT THEREUPON MAY BE SUBJECT TO LEGAL ACTION.

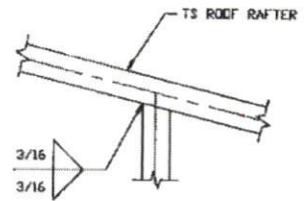
CONNECTION DETAILS



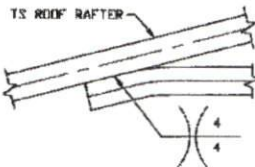
9A
**COLUMN/
LACED HEADER
CONNECTION DETAIL**
SCALE: NTS



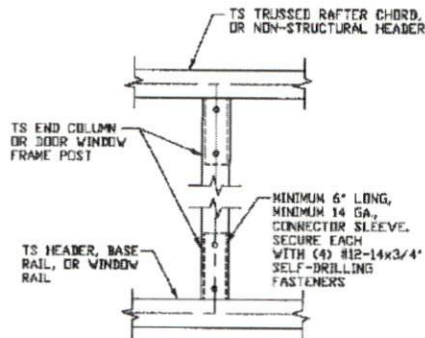
10
**COLUMN/BASE RAIL
CONNECTION DETAIL**
SCALE: NTS



11
**RAFTER TO CHORD
CONNECTION DETAIL**
SCALE: NTS



12
**COLLAR TIE
CONNECTION DETAIL**
SCALE: NTS



13
**COLUMN TO HEADER
OR BASE RAIL
CONNECTION DETAIL**
SCALE: NTS

**MOORE AND ASSOCIATES
ENGINEERING AND CONSULTING, INC.**

DRAWN BY: JG

CHECKED BY: PDH

PROJECT MGR: VSH

CLIENT: USS

UNIFIED STEEL STRUCTURES, INC.
154 N. RENFRO STREET SUITE 100
MOUNT AIRY, NC 27030
30'-0"x20'-0" SP ENCLOSED STRUCTURE

DATE: 7-8-22

SCALE: NTS

JOB NO: 220965

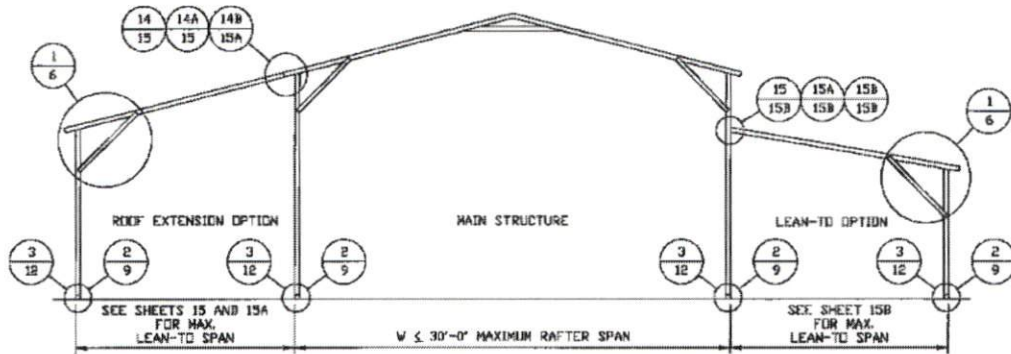
SHT. 14

DWG. NO: SK-3

REV: 0

THIS DOCUMENT IS THE PROPERTY OF MOORE AND ASSOCIATES ENGINEERING AND CONSULTING. THE UNAUTHORIZED REPRODUCTION, COPYING, OR OTHERWISE USE OF THIS DOCUMENT IS STRICTLY PROHIBITED AND ANY INFRINGEMENT THEREUPON MAY BE SUBJECT TO LEGAL ACTION.

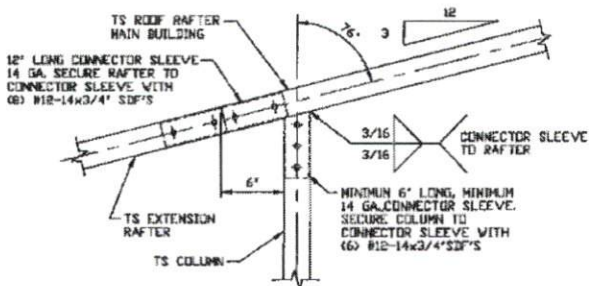
BOX EAVE RAFTER LEAN-TO OPTIONS



TYPICAL BOX EAVE RAFTER LEAN-TO OPTIONS FRAMING SECTION (BOTH OPTIONS SHOWN)

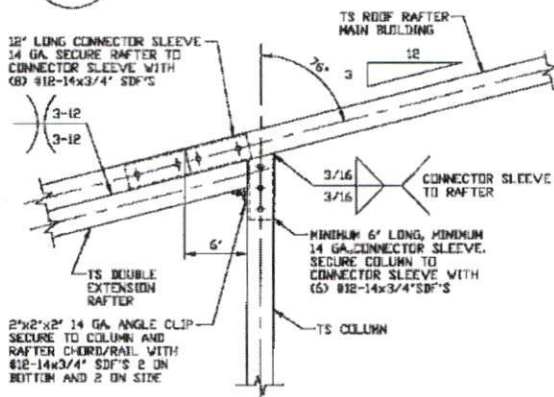
SCALE: NTS

MAXIMUM WIDTH OF LACED MEMBER ROOF EXTENSION AND LEAN-TO OPTION IS 20'-0".
 MAXIMUM WIDTH OF DOUBLE MEMBER ROOF EXTENSION AND LEAN-TO OPTION IS 16'-0".
 MAXIMUM WIDTH OF SINGLE MEMBER ROOF EXTENSION AND LEAN-TO OPTION IS 12'-0".
 MAIN BUILDING COLUMNS WITH LEAN-TO OR ROOF EXTENSION ATTACHED ARE REQUIRED TO BE LACED COLUMNS FOR EAVE HEIGHTS 16'-0" < TO ≤ 20'-0".
 MAIN BUILDING COLUMNS WITH LEAN-TO OR ROOF EXTENSION ATTACHED ARE REQUIRED TO BE DOUBLE COLUMNS FOR EAVE HEIGHTS 10'-0" < TO ≤ 16'-0".
 MAIN BUILDING COLUMNS WITH LEAN-TO OR ROOF EXTENSION ATTACHED ARE REQUIRED TO BE SINGLE COLUMNS FOR EAVE HEIGHTS ≤ 10'-0".



**14 SIDE EXTENSION RAFTER/
COLUMN DETAIL FOR
RAFTER SPANS ≤ 12'-0"**

SCALE: NTS



**14A SIDE EXTENSION RAFTER/
COLUMN DETAIL FOR
SPANS 12'-0" < TO ≤ 16'-0"**

SCALE: NTS

**MOORE AND ASSOCIATES
ENGINEERING AND CONSULTING, INC.**

DRAWN BY: JG

CHECKED BY: PMH

PROJECT MGR: VSM

CLIENT: USS

UNIFIED STEEL STRUCTURES, INC.
 154 N. RENFRO STREET SUITE 100
 MOUNT AIRY, NC 27030
 30'-0"x20'-0" SP ENCLOSED STRUCTURE

DATE: 7-8-22

SHT. 15

SCALE: NTS

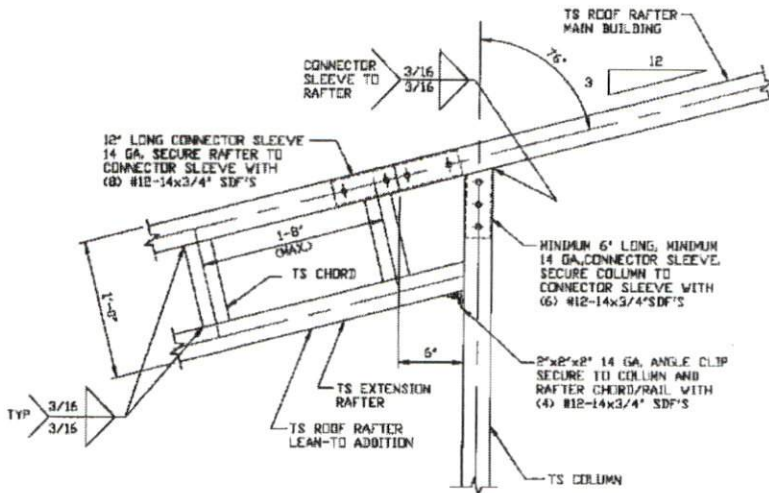
DWG. NO: SK-3

JOB NO: 220265

REV: 0

THIS DOCUMENT IS THE PROPERTY OF MOORE AND ASSOCIATES ENGINEERING AND CONSULTING. THE UNAUTHORIZED REPRODUCTION, COPYING, OR OTHERWISE USE OF THIS DOCUMENT IS STRICTLY PROHIBITED AND ANY INFRINGEMENT THEREUPON MAY BE SUBJECT TO LEGAL ACTION.

BOX EAVE RAFTER LEAN-TO OPTION



**SIDE EXTENSION RAFTER/
COLUMN DETAIL FOR RAFTER
SPANS 16'-0" < TO ≤ 20'-0"**
SCALE: NTS

SCALE: NTS

MOORE AND ASSOCIATES
ENGINEERING AND CONSULTING, INC.

CHECKED BY: PDH

CLIENT: USS

UNIFIED STEEL STRUCTURES, INC.
154 N. RENFRO STREET SUITE 100
MOUNT AIRY, NC 27030
30-0"x20'-0" SP ENCLOSED STRUCTURE

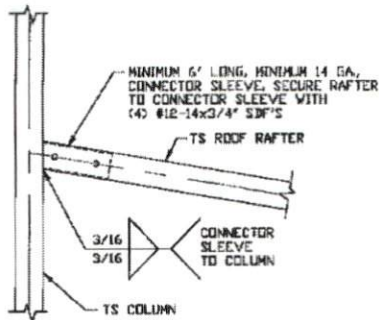
SHT. 15A

DWG. NO. SK-3

REV. 0

THIS DOCUMENT IS THE PROPERTY OF MOORE AND ASSOCIATES ENGINEERING AND CONSULTING. THE UNAUTHORIZED REPRODUCTION, COPYING, OR OTHERWISE USE OF THIS DOCUMENT IS STRICTLY PROHIBITED AND ANY INFRINGEMENT THEREUPON MAY BE SUBJECT TO LEGAL ACTION.

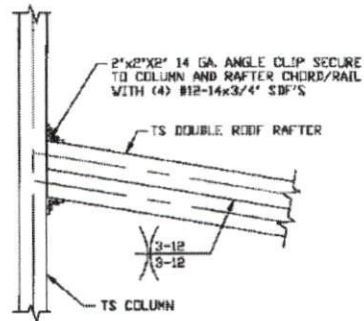
BOX EAVE RAFTER LEAN-TO OPTIONS



15

**LEAN-TO RAFTER TO RAFTER
COLUMN CONNECTION DETAIL
FOR RAFTER SPANS $\leq 12'-0"$**

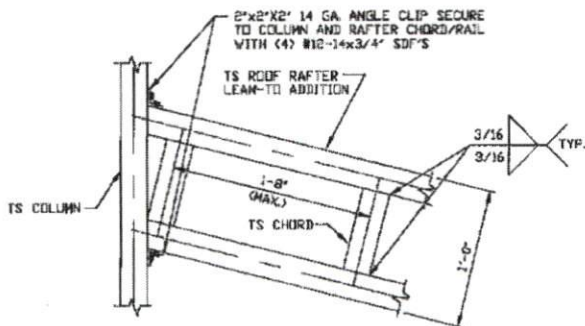
SCALE: NTS



15A

**LEAN-TO RAFTER TO RAFTER
COLUMN CONNECTION DETAIL
FOR RAFTER SPANS $12'-0" < \text{TO} \leq 16'-0"$**

SCALE: NTS



15B

**LEAN-TO RAFTER TO RAFTER
COLUMN CONNECTION DETAIL
FOR RAFTER SPANS $16'-0" < \text{TO} \leq 20'-0"$**

SCALE: NTS

**MOORE AND ASSOCIATES
ENGINEERING AND CONSULTING, INC.**

DRAWN BY: JG

CHECKED BY: PMH

PROJECT MGR: WSH

CLIENT: USS

UNIFIED STEEL STRUCTURES, INC.
154 N. RENFRO STREET SUITE 100
MOUNT AIRY, NC 27030
30'-0"x20'-0" SP ENCLOSED STRUCTURE

DATE: 7-9-22

SHT. 15B

SCALE: NTS

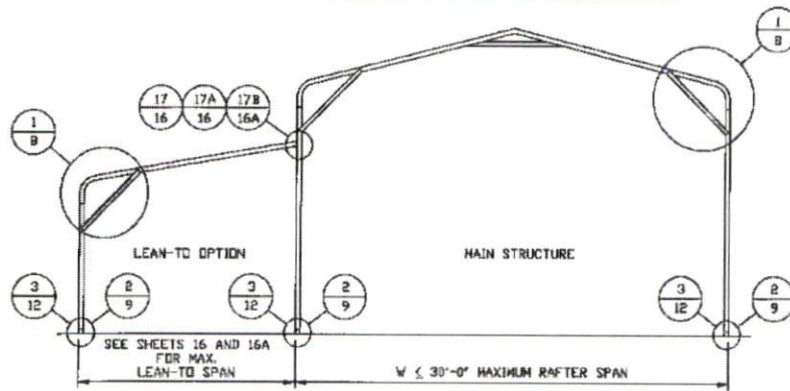
DWG. NO: SK-3

JOB NO: 22096S

REV: 0

THIS DOCUMENT IS THE PROPERTY OF MOORE AND ASSOCIATES ENGINEERING AND CONSULTING. THE UNAUTHORIZED REPRODUCTION, COPYING, OR OTHERWISE USE OF THIS DOCUMENT IS STRICTLY PROHIBITED AND ANY INFRINGEMENT THEREUPON MAY BE SUBJECT TO LEGAL ACTION.

BOW RAFTER LEAN-TO OPTIONS



TYPICAL BOW RAFTER LEAN-TO OPTION FRAMING SECTION

SCALE: NTS

MAXIMUM WIDTH OF LACED MEMBER ROOF EXTENSION AND LEAN-TO OPTION IS 20'-0".

MAXIMUM WIDTH OF DOUBLE MEMBER ROOF EXTENSION AND LEAN-TO OPTION IS 16'-0".

MAXIMUM WIDTH OF SINGLE MEMBER ROOF EXTENSION AND LEAN-TO OPTION IS 12'-0".

MAIN BUILDING COLUMNS WITH LEAN-TO OR ROOF EXTENSION ATTACHED ARE REQUIRED TO BE LACED COLUMNS

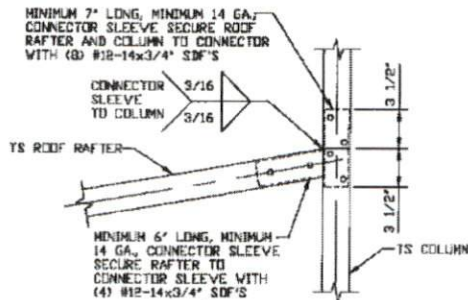
FOR EAVE HEIGHTS 16'-0" < TO ≤ 20'-0".

MAIN BUILDING COLUMNS WITH LEAN-TO OR ROOF EXTENSION ATTACHED ARE REQUIRED TO BE DOUBLE COLUMNS

FOR EAVE HEIGHTS 10'-0" < TO ≤ 16'-0".

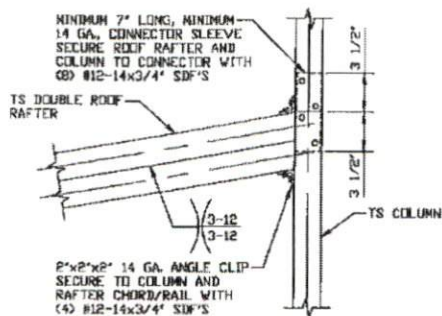
MAIN BUILDING COLUMNS WITH LEAN-TO OR ROOF EXTENSION ATTACHED ARE REQUIRED TO BE SINGLE COLUMNS

FOR EAVE HEIGHTS ≤ 10'-0".



LEAN-TO RAFTER TO RAFTER COLUMN CONNECTION DETAIL FOR RAFTER SPANS ≤ 12'-0"

SCALE: NTS



LEAN-TO RAFTER TO RAFTER COLUMN CONNECTION DETAIL FOR RAFTER SPANS 12'-0" < TO ≤ 16'-0"

SCALE: NTS

**MOORE AND ASSOCIATES
ENGINEERING AND CONSULTING, INC.**

DRAWN BY: JG

CHECKED BY: PDH

PROJECT MGR: VSM

CLIENT: USS

UNIFIED STEEL STRUCTURES, INC.
154 N. RENFRO STREET SUITE 100
MOUNT AIRY, NC 27030
30'-0"x20'-0" SP ENCLOSED STRUCTURE

DATE: 7-9-22

SCALE: NTS

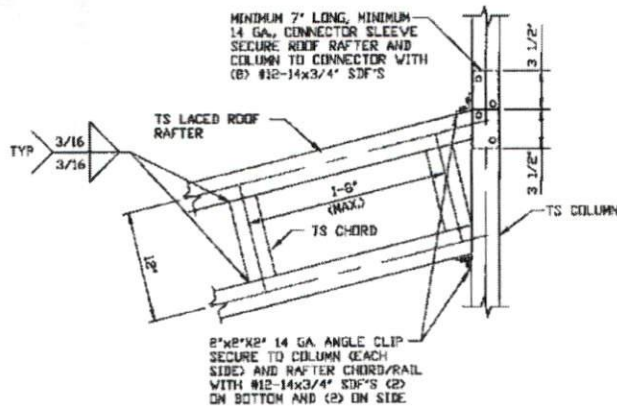
JTB NO: 220963

DWG. NO: SK-3

REV: 0

THIS DOCUMENT IS THE PROPERTY OF MOORE AND ASSOCIATES ENGINEERING AND CONSULTING, INC. THE UNAUTHORIZED REPRODUCTION, COPYING, OR OTHERWISE USE OF THIS DOCUMENT IS STRICTLY PROHIBITED AND ANY INFRINGEMENT THEREUPON MAY BE SUBJECT TO LEGAL ACTION.

BOW RAFTER LEAN-TO OPTION



**LEAN-TO RAFTER TO RAFTER COLUMN
CONNECTION DETAIL FOR
RAFTER SPANS 16'-0" < TO < 20'-0"**
SCALE: NTS

17B

**MOORE AND ASSOCIATES
ENGINEERING AND CONSULTING, INC.**

DRAWN BY: JG

CHECKED BY: PDH

PROJECT MGR: VSM

CLIENT: USS

**UNIFIED STEEL STRUCTURES, INC.
154 N. RENFRO STREET SUITE 100
MOUNT AIRY, NC 27030
30'-0"x20'-0" SP ENCLOSED STRUCTURE**

DATE: 7-8-22

SHT. 16A

SCALE: NTS

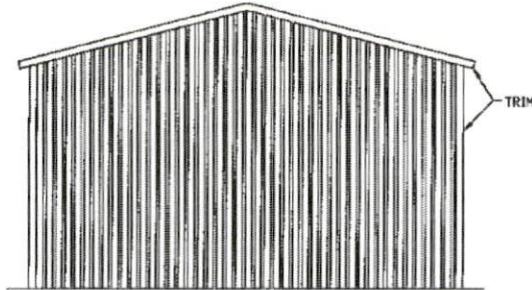
DWG. NO. SK-3

JOB NO. 22026S

REV: 0

THIS DOCUMENT IS THE PROPERTY OF MOORE AND ASSOCIATES ENGINEERING AND CONSULTING. THE UNAUTHORIZED REPRODUCTION, COPYING, OR OTHERWISE USE OF THIS DOCUMENT IS STRICTLY PROHIBITED AND ANY INFRINGEMENT THEREUPON MAY BE SUBJECT TO LEGAL ACTION.

BOX EAVE RAFTER VERTICAL ROOF/SIDING OPTION



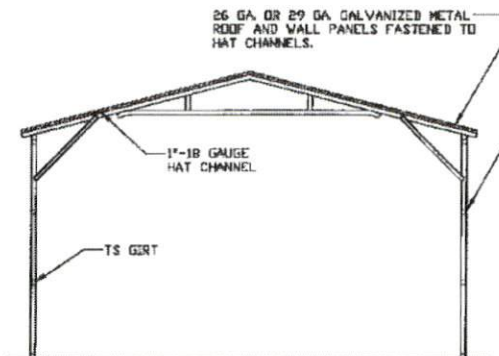
**TYPICAL END ELEVATION
VERTICAL ROOF/SIDING**

SCALE: NTS



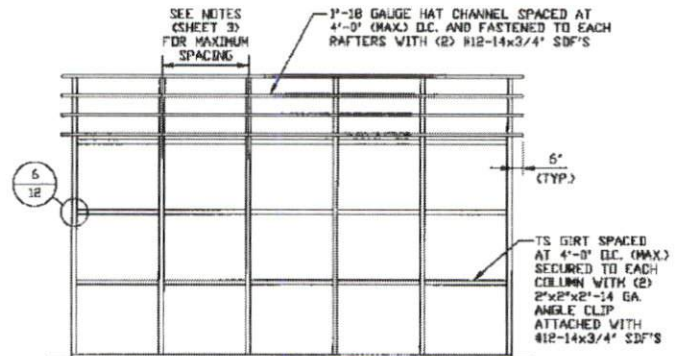
**TYPICAL SIDE ELEVATION
VERTICAL ROOF/SIDING**

SCALE: NTS



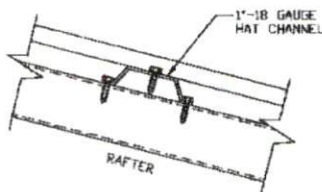
**TYPICAL SECTION VERTICAL
ROOF/SIDING OPTION**

SCALE: NTS



**TYPICAL FRAMING SECTION
VERTICAL ROOF/SIDING OPTION**

SCALE: NTS



PANEL ATTACHMENT

(ALTERNATE FOR VERTICAL ROOF PANELS)

SCALE: NTS

**MOORE AND ASSOCIATES
ENGINEERING AND CONSULTING, INC.**

DRAWN BY: JG

CHECKED BY: PJM

PROJECT MGR: VSM

CLIENT: USS

UNIFIED STEEL STRUCTURES, INC.
154 N. RENFRO STREET SUITE 100
MOUNT AIRY, NC 27030
30'-0"x20'-0" SP ENCLOSED STRUCTURE

DATE: 7-8-22

SHT. 17

SCALE: NTS

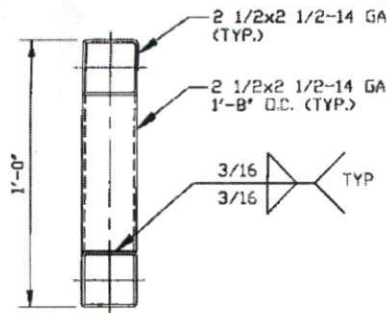
DWG. NO: SK-3

JOB NO: 220965

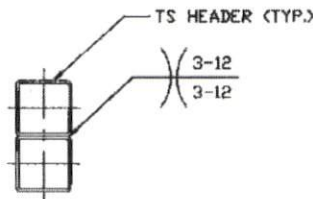
REV: 0

THIS DOCUMENT IS THE PROPERTY OF MOORE AND ASSOCIATES ENGINEERING AND CONSULTING. THE UNAUTHORIZED REPRODUCTION, COPYING, OR OTHERWISE USE OF THIS DOCUMENT IS STRICTLY PROHIBITED AND ANY INFRINGEMENT THEREUPON MAY BE SUBJECT TO LEGAL ACTION.

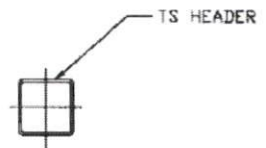
SIDE WALL HEADER OPTIONS



**HEADER DETAIL FOR
12'-0" < LENGTHS ≤ 20'-0"**
SCALE: NTS

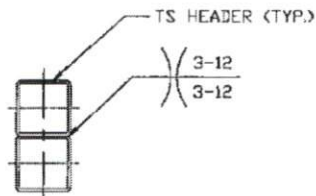


**HEADER DETAIL FOR
7'-0" < LENGTHS ≤ 12'-0"**
SCALE: NTS

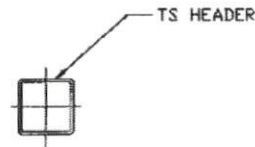


**HEADER DETAIL FOR
LENGTHS ≤ 7'-0"**
SCALE: NTS

END WALL HEADER OPTIONS



**HEADER DETAIL FOR
13'-0" < LENGTHS ≤ 20'-0"**
SCALE: NTS



**HEADER DETAIL FOR
LENGTHS ≤ 13'-0"**
SCALE: NTS

**MOORE AND ASSOCIATES
ENGINEERING AND CONSULTING, INC.**

DRAWN BY: JG

CHECKED BY: PDH

PROJECT MGR: WSM

CLIENT: USS

UNIFIED STEEL STRUCTURES, INC.
154 N. RENFRO STREET SUITE 100
MOUNT AIRY, NC 27030
30'-0"x20'-0" SP ENCLOSED STRUCTURE

DATE: 7-9-22

SHT. 18

SCALE: NTS

DWG. NO: SK-3

JOB NO: 220965

REV: 0

THIS DOCUMENT IS THE PROPERTY OF MOORE AND ASSOCIATES ENGINEERING AND CONSULTING. THE UNAUTHORIZED REPRODUCTION, COPYING, OR OTHERWISE USE OF THIS DOCUMENT IS STRICTLY PROHIBITED AND ANY INFRINGEMENT THEREUPON MAY BE SUBJECT TO LEGAL ACTION.