

POST DATA			
LIVE LOAD: 20 LBS.			
LABEL	LOCATION	UNIT	PIER LOAD*
A		A	3100
A		B	
B	16'-5"	A	6700
B	16'-5"	B	
C	30'-9 1/4"	A	7100
C	30'-9 1/4"	B	
D	48'-0"	A	3200
D	48'-0"	B	
* EMPTY PIER LOAD IS COMBINED IN NUMBER ABOVE			

STRAP DATA		
OVERHANGS (F/R): 9 / 9		
WIND ZONE: 1		
LOCATION	UNIT	STRAP
	A&B	3 x 26 ga
16'-2"	A&B	G-1
48'-0"	A&B	3 x 26 ga

L E G E N D

STANDARD FOOTING

NOTES:

1. THIS DRAWING IS DESIGNED FOR THE STANDARD WIND ZONE AND IS TO BE USED IN CONJUNCTION WITH THE INSTALLATION MANUAL AND ITS SUPPLEMENTS.

2. FOOTINGS ARE SHOWN FOR EXAMPLE ONLY. QUANTITY AND SPACING MAY VARY BASED ON PAD TYPE, SOIL CONDITION, ETC.

3. FOOTING PADS & PIERS ARE REQUIRED AT SUPPORT POSTS. SEE INSTALLATION MANUAL FOR REQUIREMENTS.

Cavco
INDUSTRIES, INC.®

ROCKY MOUNT
270

PRODUCT NAME

PEGASUS

MODEL NO.

28483S

DRAWING TITLE

PIER LAYOUT
20# ROOF LOAD

DRAWN BY:

Sandra R.

DATE:

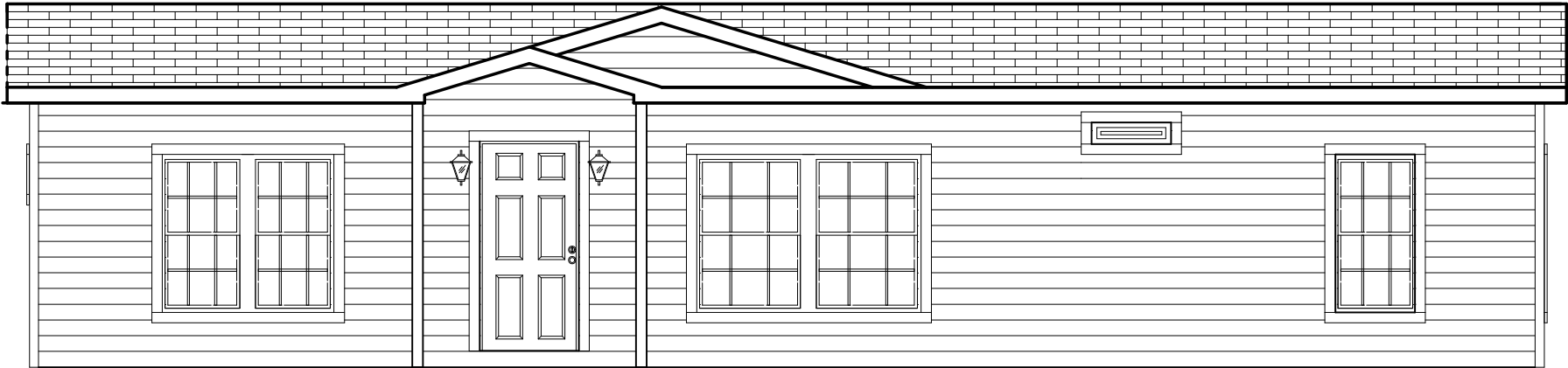
10/02/24

SHT

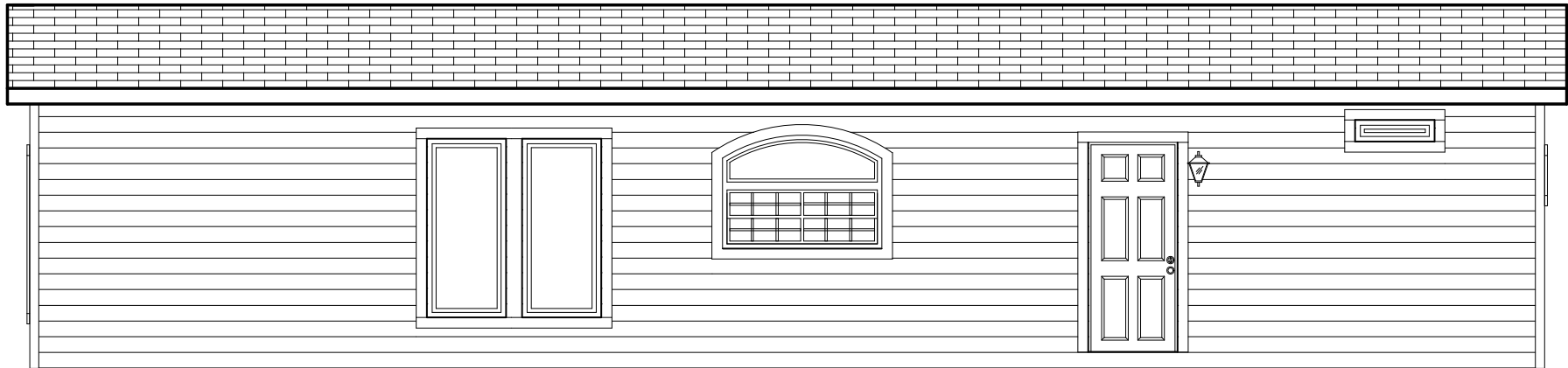
SP.1C.1

REV

D

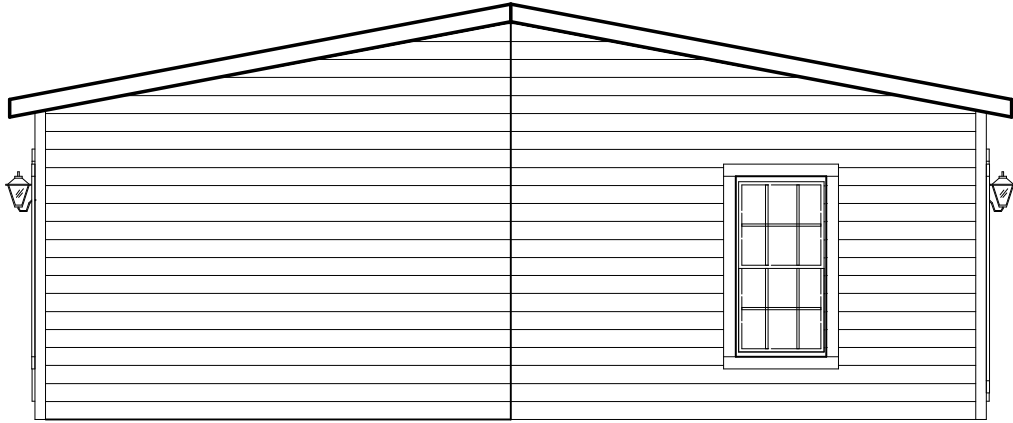


FRONT SIDE WALL ELEVATION

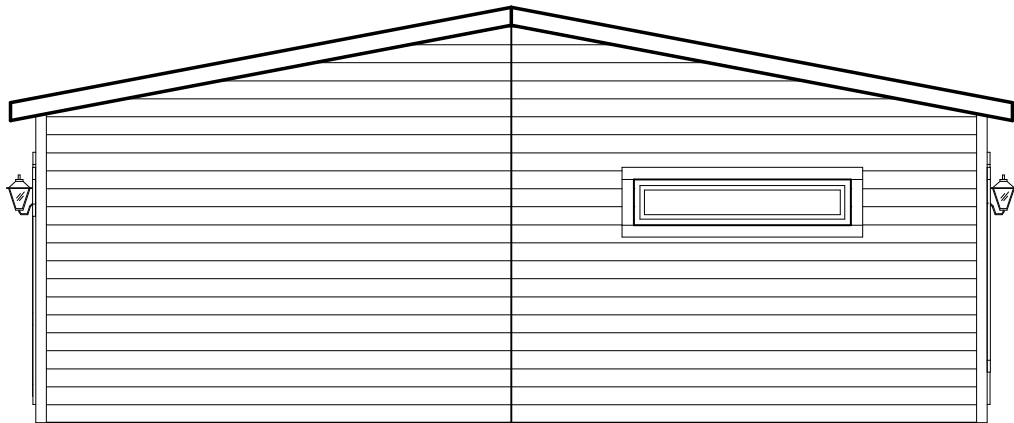


BACK SIDE WALL ELEVATION

<div><div>Cavco</div><div>INDUSTRIES, INC.®</div></div>	
ROCKY MOUNT 270	
PRODUCT NAME PEGASUS	
MODEL NO. 28483S	
DRAWING TITLE EXTERIOR ELEVATIONS	
DRAWN BY: Vivienne P.	
DATE: 07/25/22	
SHT EE.1	REV B



HITCH END WALL ELEVATION



REAR END WALL ELEVATION



ROCKY MOUNT
270

PRODUCT NAME
PEGASUS

MODEL NO.
28483S

DRAWING TITLE
EXTERIOR
ELEVATIONS

DRAWN BY:
Sandra R.

DATE:
09/05/19

SHT	REV
EE.2	