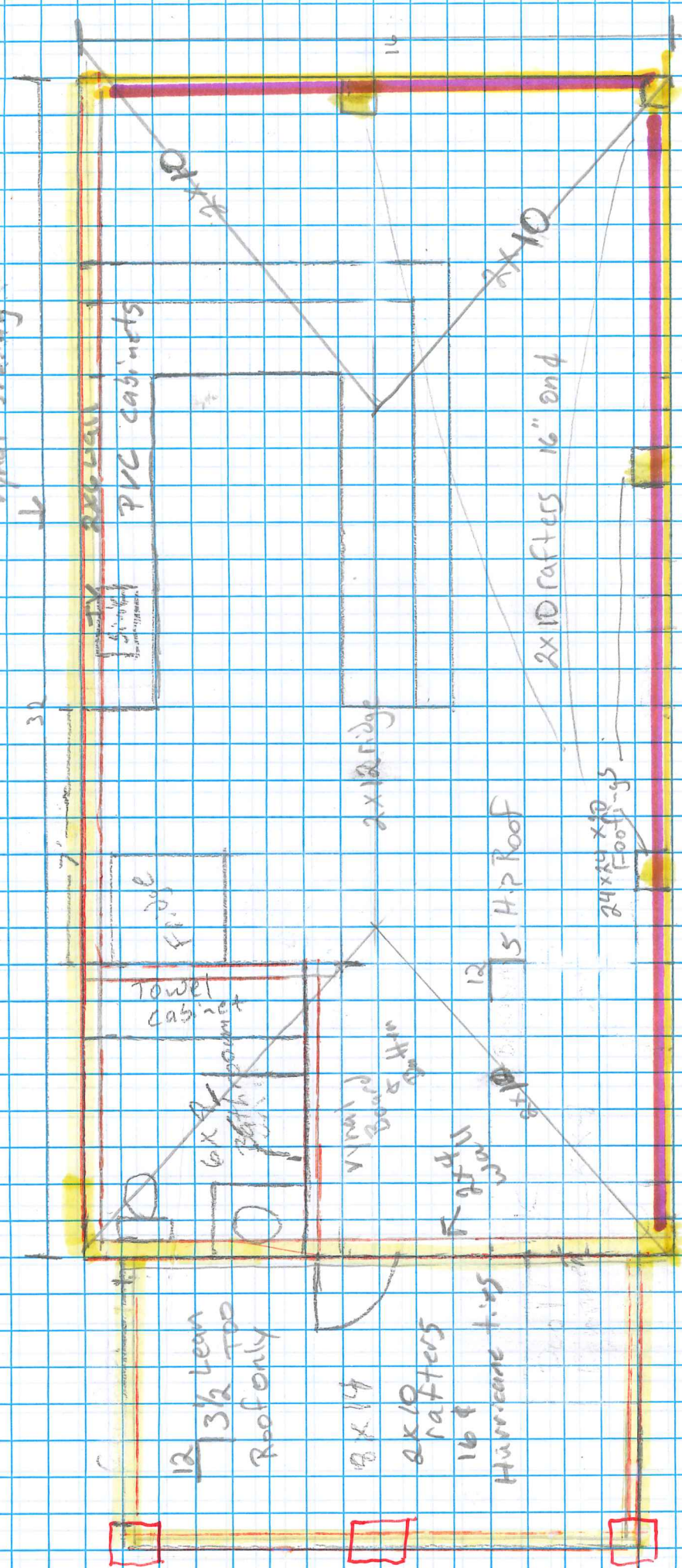


- Shingled roof 1/2 OSB
- 2x10 Rafters 16" on d
- 16" Overhang Hurricane tie
- 2x12 Ridge



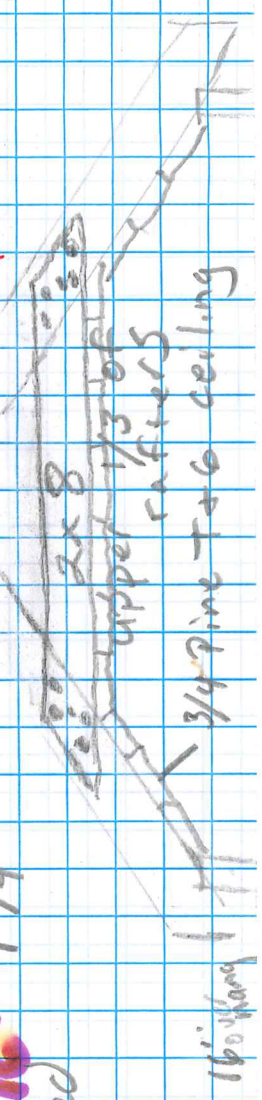
- 12 3/2 lean Roof only
- 8x14
- 2x10 Rafters 16"
- Hurricane ties

8x8 Post
Anchored Simpson ties
Through bolts LVL

2x12
2x10 Rafters

Footings 24x24 x 20 Deep

2x12 16"
Doubled



2x10 rafter

2 16' LVL 13/4 Double

Hurricane ties

2x10 on rafters

2x12 Ridge

2-13/4 Double LVL

2x8

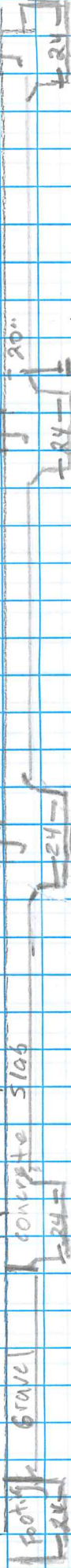
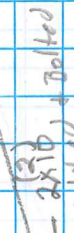
2x8

Exterior Bath Door 20 min

Simpson Dec. Anchors

Concrete Slab

Gravel Footing



Treat Bottom Plate
Secured By 1/2" Dia Bolts

2x4 Stud Framing
Treat Plate

1/2 Sheathing
Treat
Vynal siding

4"
concrete slab

5/8 Simpson
8x8 Bracket
Cypress

9x9 Post
Footings

Footings

1'6"

Finish grade

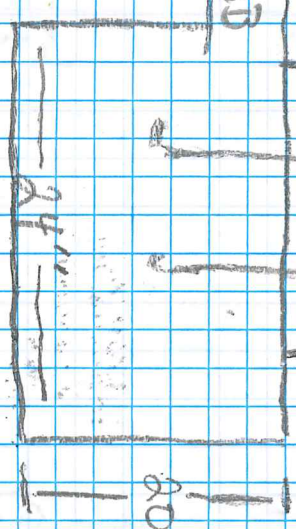
9"

1'

20"

4" 5/16"

20"



24"