

Horizontal ties

2x8 16' on d

2x10

2 16' LVL

2x8

2x8

2x8

Simpson Dec. Anchors

Bath Door

concrete slab

Footings

2x10 Notched & Bolted

6x6 Treed

5/8 Through Bolts

2 16' LVL

2x8

2x8

2x8

2x8

5/8

2x8

2x8

2x8

2x8

2x8

2x8

2x8

2x8

2x8

2x8

2x8

2x8

2x8

2x8

2x8

2x8

2x8

2x8

2x8

2x8

2x8

2x8

2x8

2x8

2x8

2x8

2x8

2x8

2x8

2x8

2x8

2x8

2x8

2x8

2x8

2x8

2x8

2x8

2x8

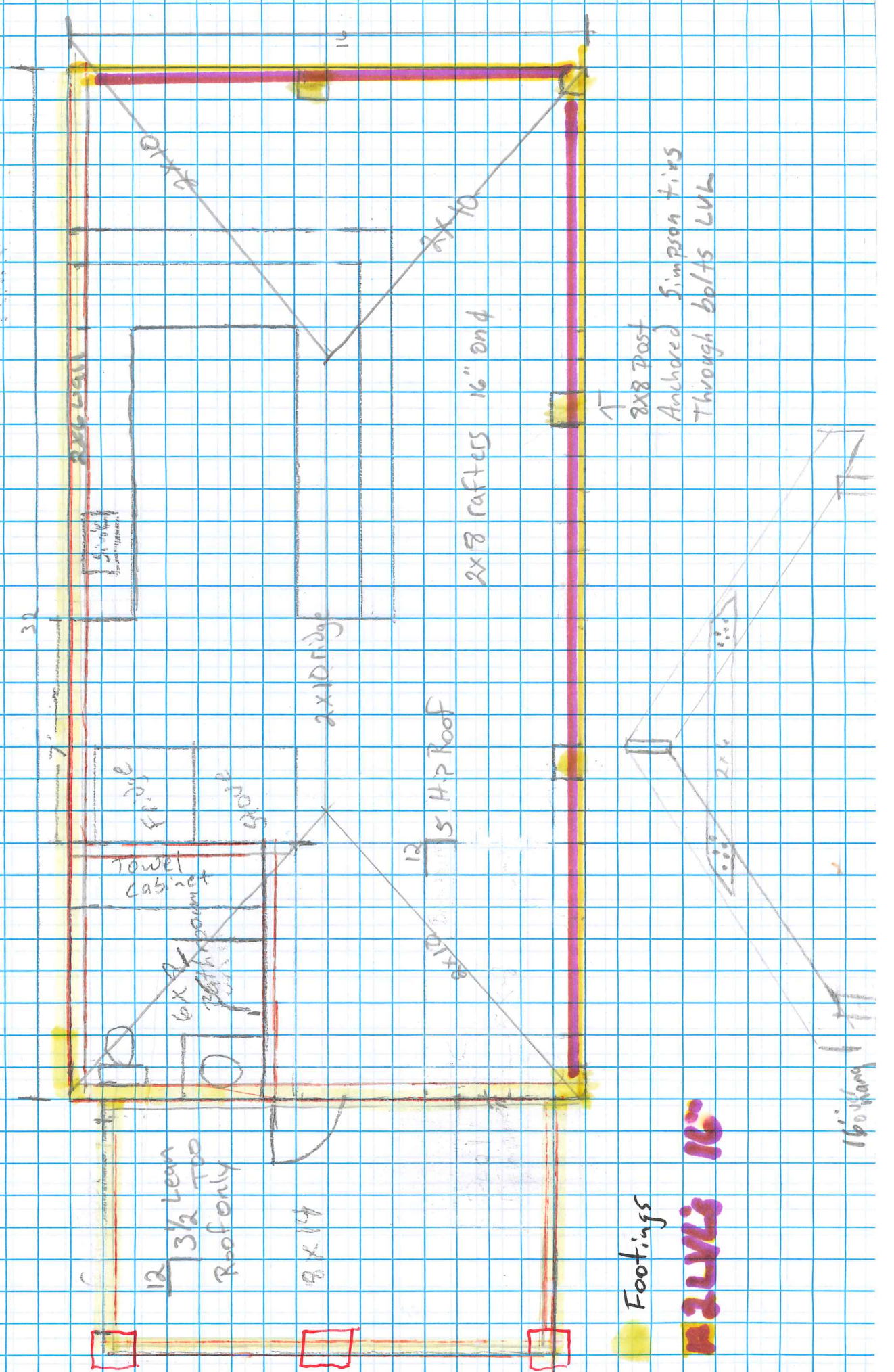
2x8

2x8

2x8

2x8

Shingled roof 1/2 OSB
2x8 Rafters 16" on d
16" Overhang Hurricane ties



Footings

2x12x16"

16" overhang

12 3/2 Lean
Roof only

8x14

12 5 HP Roof
8x10

2x8 rafters 16" on d

2x8 post
Anchored Simpson ties
Through bolts LVL

2x6 LVL

2x10 ridge

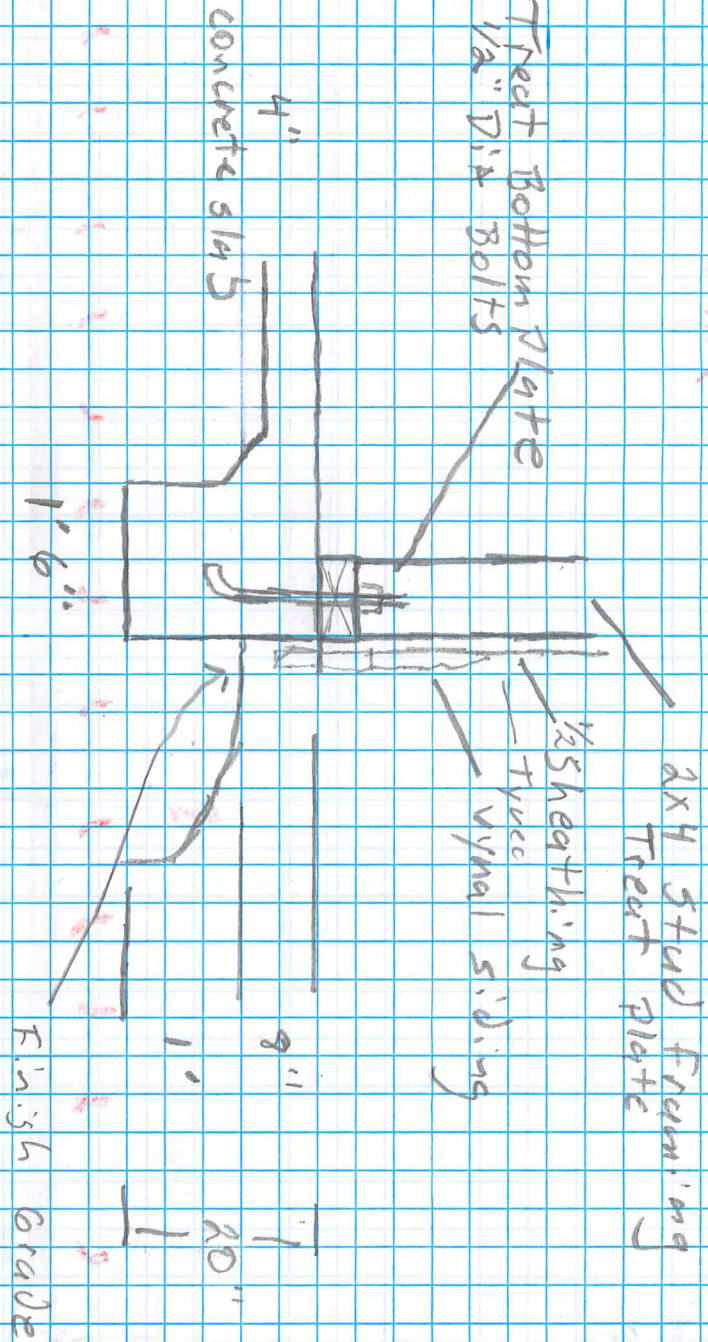
Towel cabinet
6x6 post

30

14

16" overhang

Secured By 1/2" Dia Bolts
Treat Bottom Plate



Footings