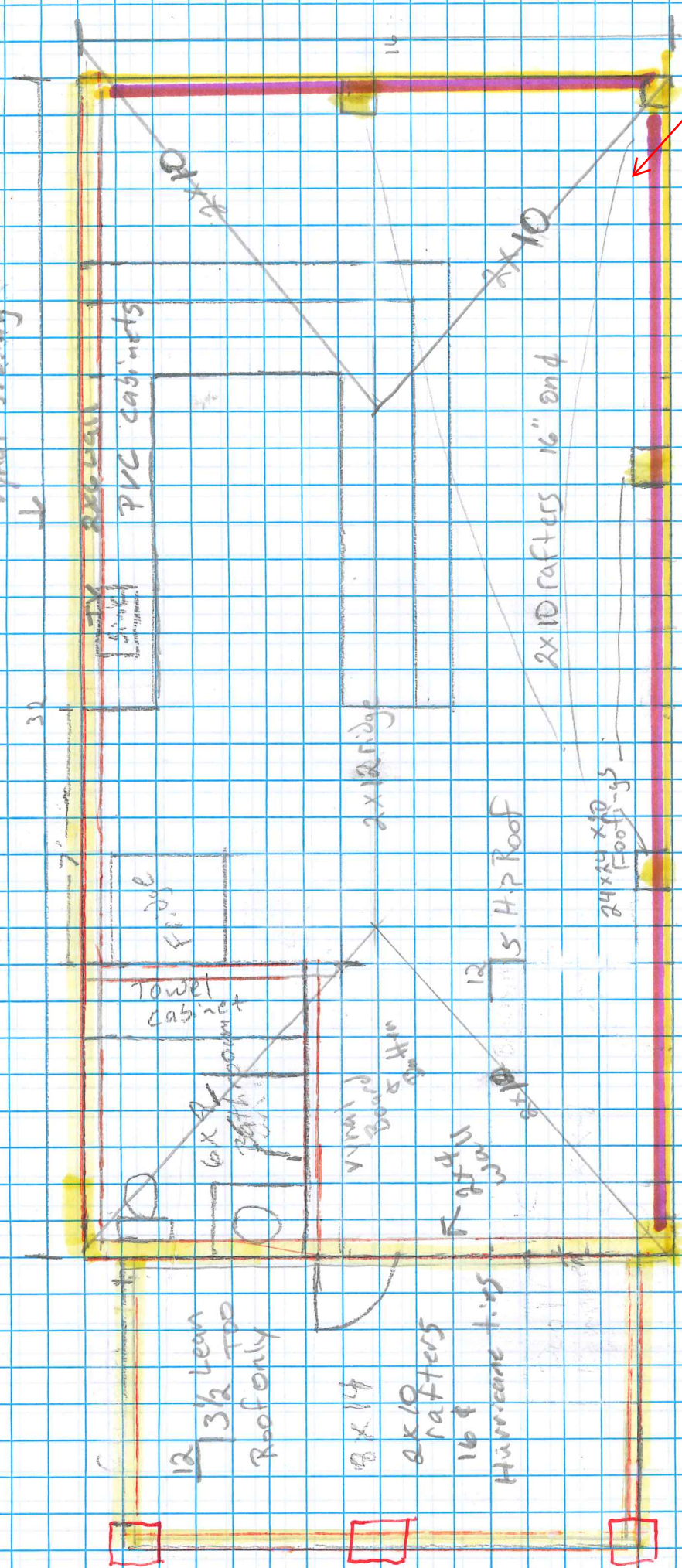


Shingled roof 1/2 OSB
 2x10 Rafters 16" on d
 16" Overhang Hurricane ties
 2x12 Ridge

Vynal siding



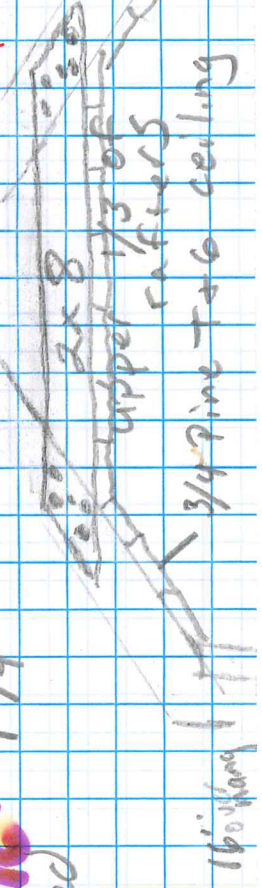
2x8 CJ 16" oc per contractor.



8x8 Post
 Anchored Simpson ties
 Through bolts LVL

2x10 Rafters

2x12



12 3/2 lean
 Roof only

8x14
 2x10 Rafters
 16" Hurricane ties

12 5 HP Roof

24x24 Footings

Footings 24x24 x 20 Deep

2x12s 16"
 Doubled

16x16

2x10 rafter

2 16' LVL 13/4 Double

Hurricane ties

2x10 on rafters

2x12 Ridge

2-13/4 Double LVL

2x8

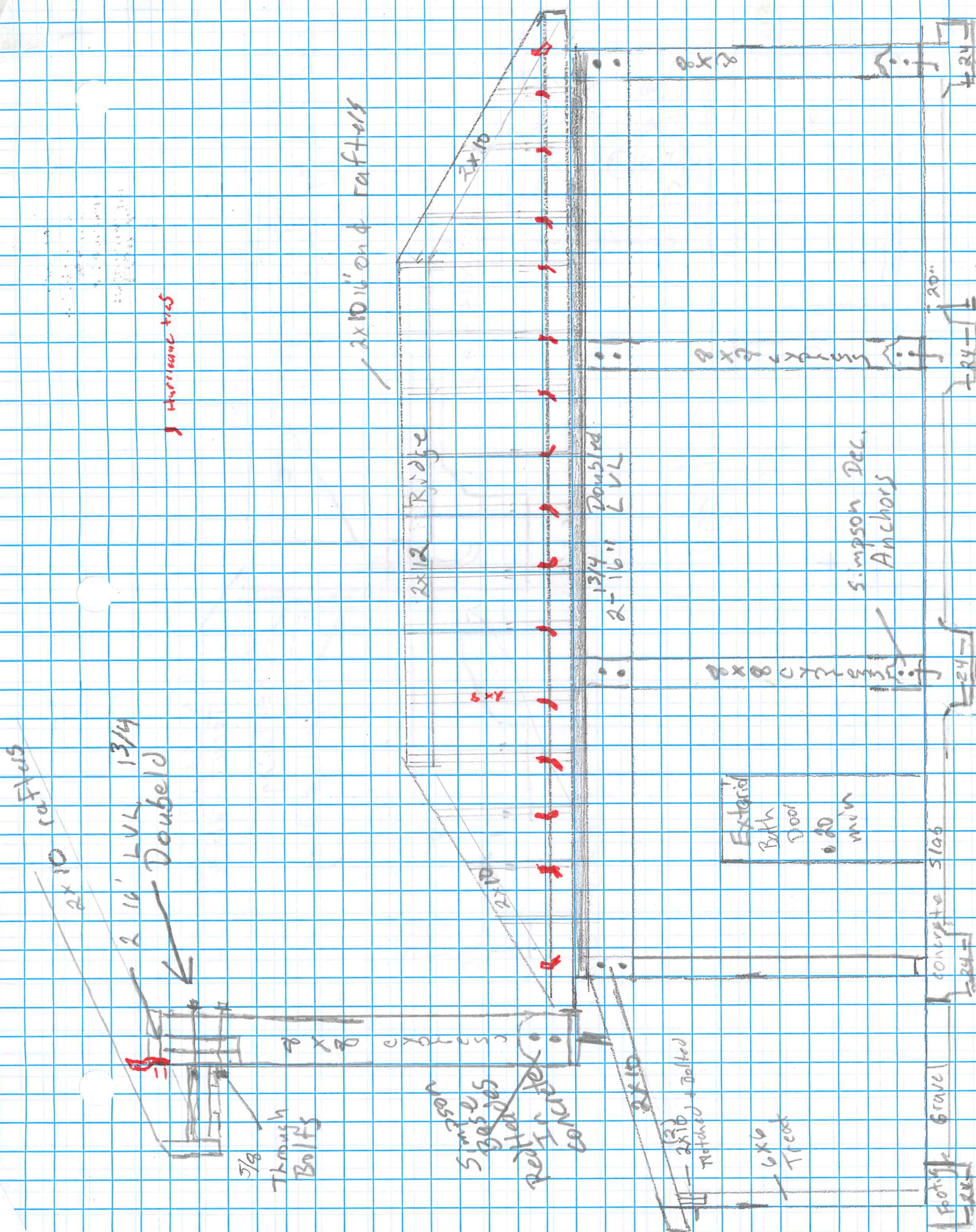
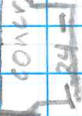
2x8

Exterior Bath Door 20 min

Simpson Dec. Anchors

Concrete Slab

Gravel Footing



Secured By 1/2" Dia Bolts
Treat Bottom Plate

2x4 Stud Framing
Treat Plate

1/2" Sheathing
Treat
Vinyl Siding

4"
Concrete Slab

5' Simpson
2x8 Bracket
Cypress

9x9 Post
Footings

Footings

1'6"

Finish Grade

9"
1"
20"
20"

4" 5/16"

