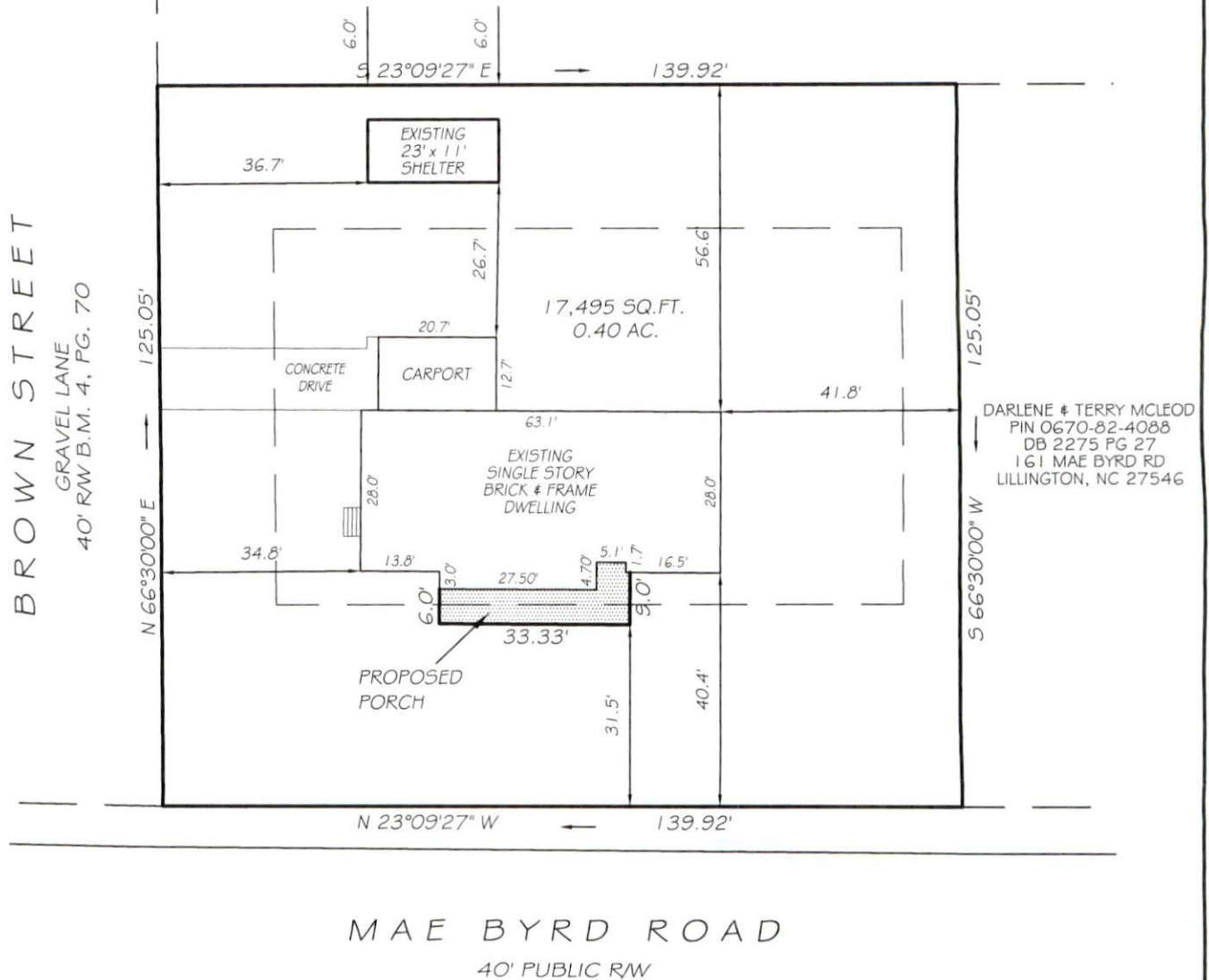


I, MICHAEL P. GRIFFIN, certify that under my direction and supervision this map was drawn from an actual field survey; that the error of closure of the survey as calculated by coordinates is 1: 10,000+; that the area shown hereon was calculated by coordinates.

Witness my hand and seal this 23RD day of JULY 2024.

BK 2009 PG 670
HARNETT CO. REGISTRY

SPOYLE PROPERTIES LLC
PIN 0670-82-5242
DB 3215 PG 297
172 MARSHBANKS ST
LILLINGTON, NC 27546



DARLENE & TERRY MCLEOD
PIN 0670-82-4088
DB 2275 PG 27
161 MAE BYRD RD
LILLINGTON, NC 27546

MAE BYRD ROAD
40' PUBLIC R/W

SETBACKS

FRONT	35'
REAR	0
SIDE	10'
CORNER SIDE	20'

PRELIMINARY
NOT FOR RECORDATION,
OR CONVEYANCE

LEGEND

EIP	EXISTING IRON PIPE	FES	FLARED END SECTION
ISS	IRON STAKE SET	WM	WATER METER
R/W	RIGHT OF WAY	CO	CLEAN OUT
N/F	NOW OR FORMERLY	FH	FIRE HYDRANT
EIS	EXISTING IRON STAKE	CB	CATCH BASIN

