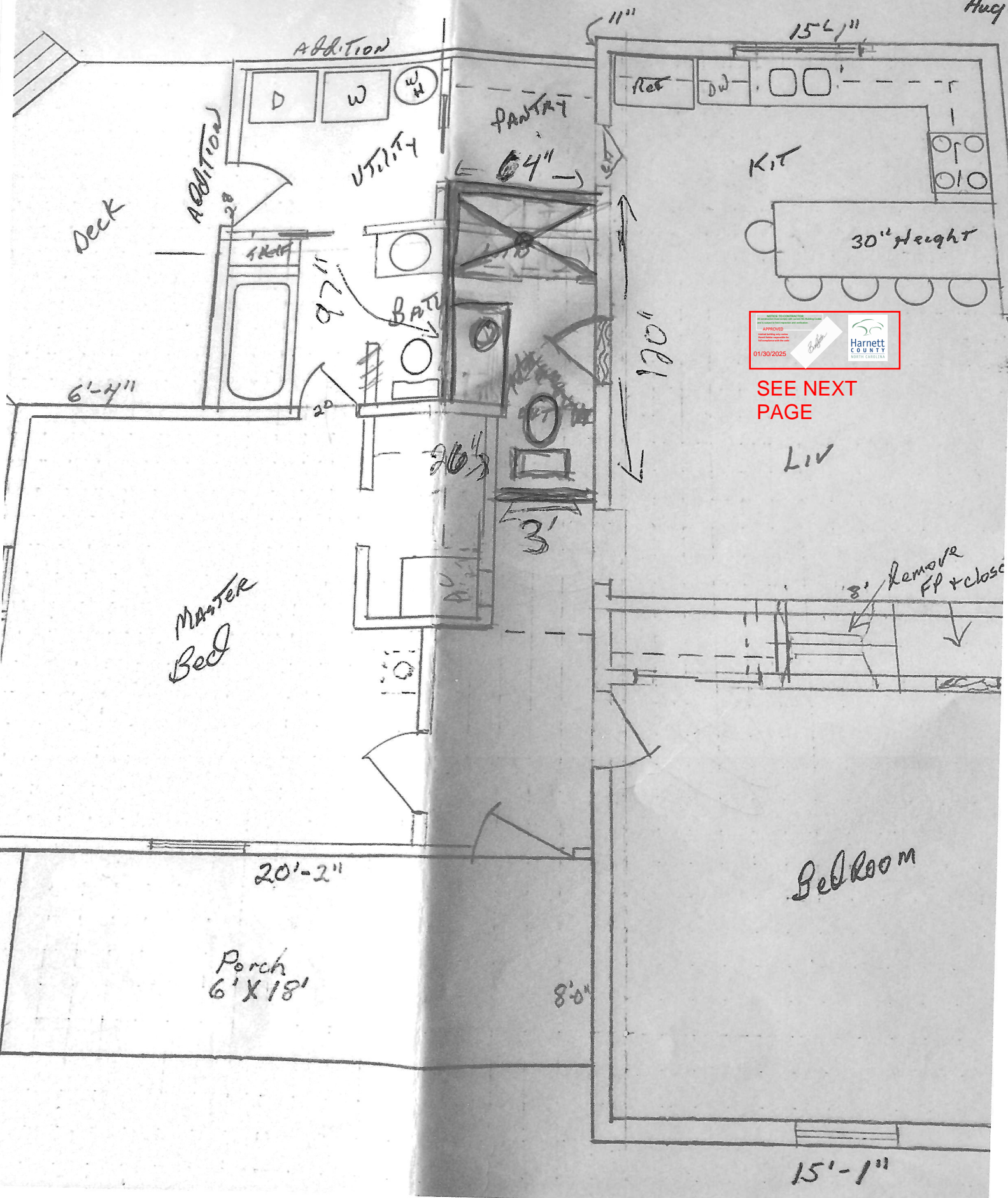


Aug.



SEE NEXT PAGE

LIV

3' Remove FP & close

Bed Room

Master Bed

Porch 6' X 18'

PANTRY

KIT

UTILITY

BATH

ADDITION

ADDITION

Deck

6'-4"

9'-7"

20'-2"

20'-2"

8'-0"

15'-1"

17'-0"

6'-4"

15'-1"

11"

D W W/H

Ret DW

30" Height

17'-8"

3'

20"

12'-4"

17'-8"

17'-8"

17'-8"

17'-8"

17'-8"

17'-8"

17'-8"

17'-8"

17'-8"

17'-8"

17'-8"

17'-8"

17'-8"

17'-8"

17'-8"

17'-8"

17'-8"

17'-8"

17'-8"

17'-8"

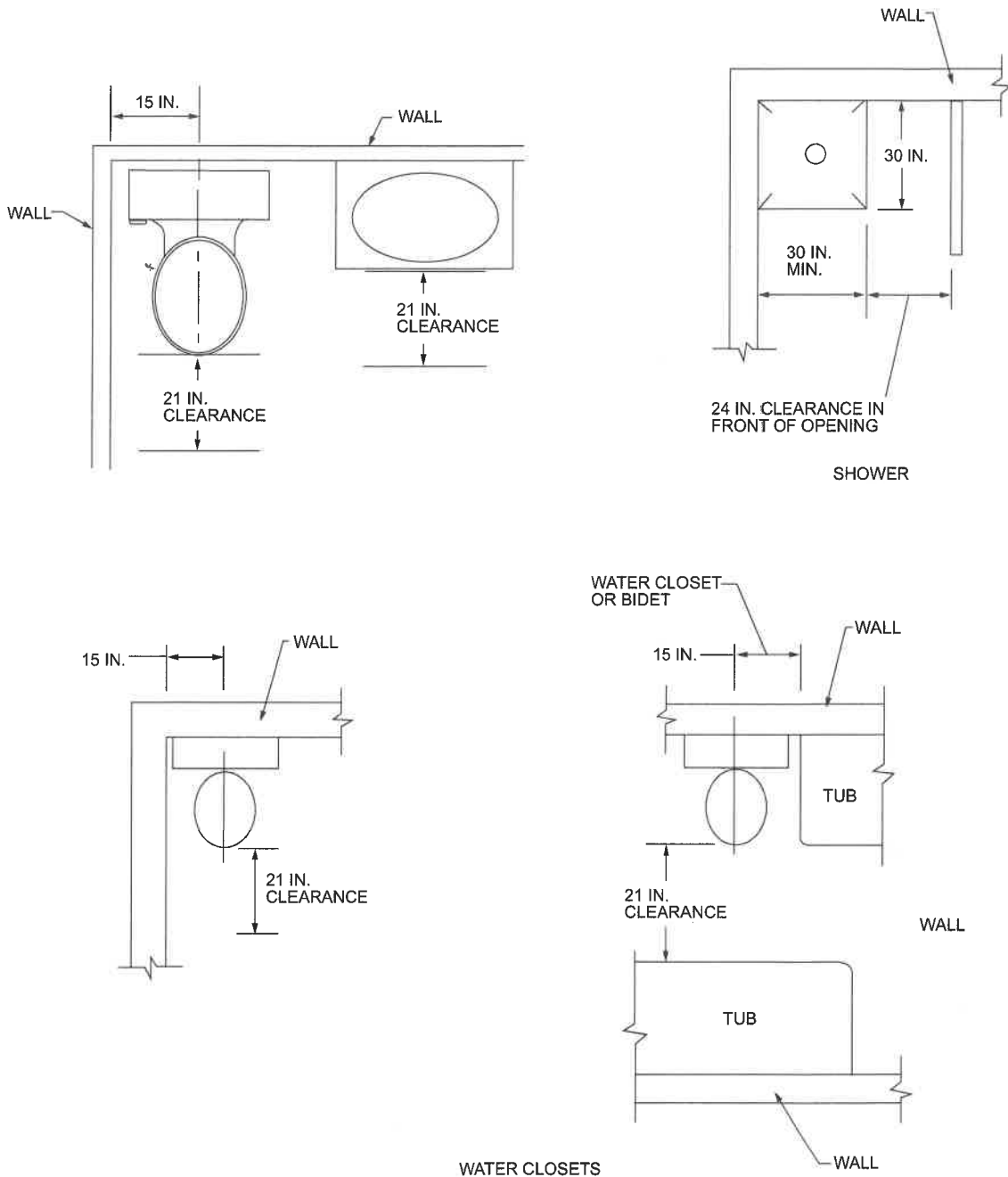
installation. The designation shall be acid etched, sand-blasted, ceramic-fired, laser etched, embossed, or be of a type that once applied cannot be removed without being destroyed. A label shall be permitted in lieu of the manufacturer's designation.

**Exceptions:**

1. For other than tempered glass, manufacturer's designations are not required provided that the *building official* approves the use of a certificate, affidavit or other evidence confirming compliance with this code.

2. Tempered spandrel glass is permitted to be identified by the manufacturer with a removable paper designation.

**R308.1.1 Identification of multiple assemblies.** Multi-pane assemblies having individual panes not exceeding 1 square foot (0.09 m<sup>2</sup>) in exposed area shall have not less than one pane in the assembly identified in accordance with Section R308.1. Other panes in the assembly shall be labeled "CPSC 16 CFR 1201" or "ANSI Z97.1" as appropriate.



For SI: 1 inch = 25.4 mm.

**FIGURE R307.1  
MINIMUM FIXTURE CLEARANCES**