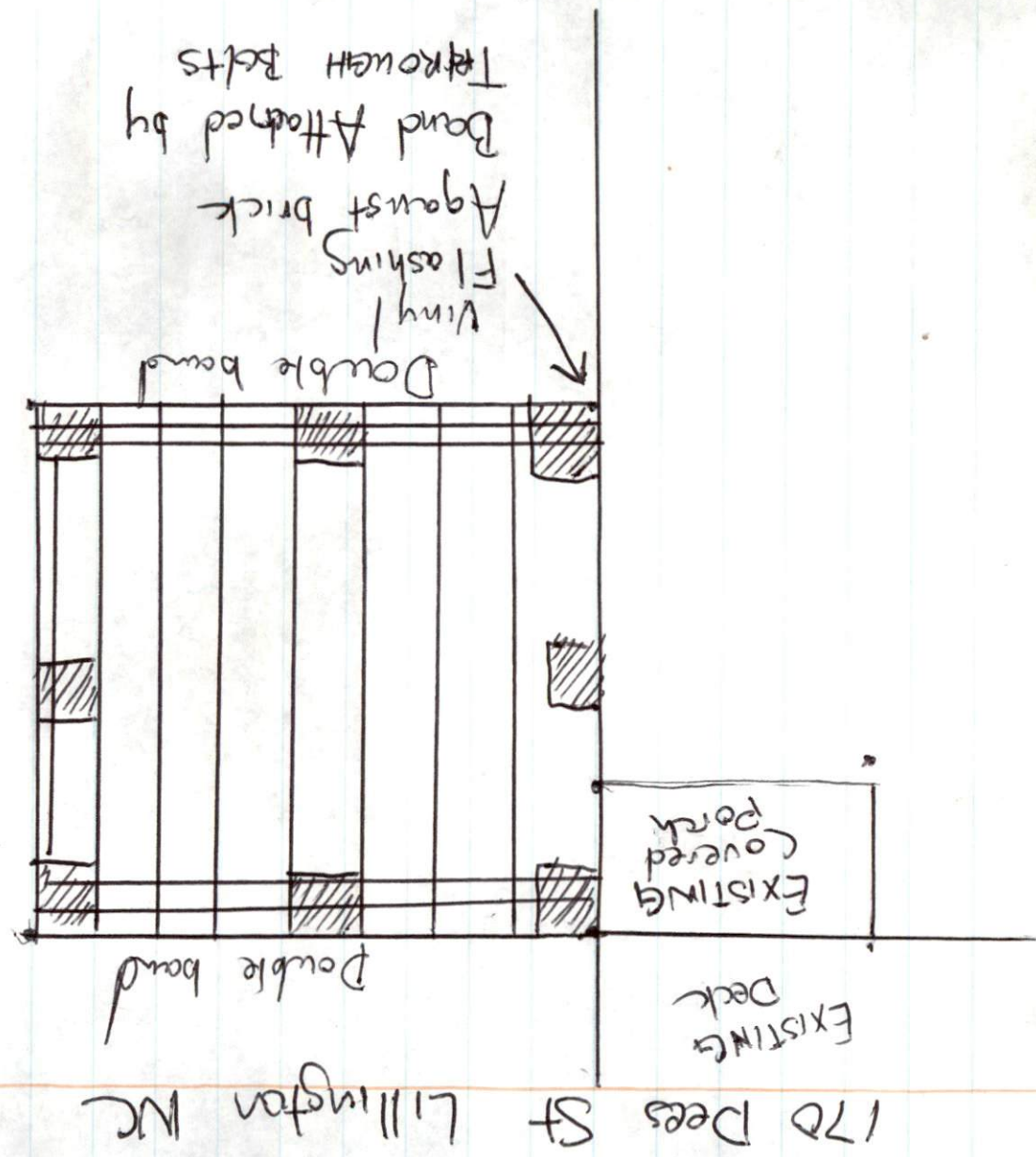


DRAWN TO 1/8" SCALE



Ledges and Notes

A. = footing 24" x 24" x 10" Deep

Powered Concrete

B. Support Posts will be 6x6 treated

C. 2x10 treated Band

2x8 treated Joist  
5/4" treated decking  
boards for floor

Handwritten text at the top of the page, possibly a title or header.

Handwritten text below the first line, possibly a subtitle or introductory note.

Handwritten text below the second line, possibly a date or location.

Handwritten text below the third line, possibly a name or identifier.

Handwritten text below the fourth line, possibly a description or notes.

Handwritten text below the fifth line, possibly a list or table header.

Handwritten text below the sixth line, possibly a list or table header.

Handwritten text below the seventh line, possibly a list or table header.

Handwritten text below the eighth line, possibly a list or table header.

Handwritten text below the ninth line, possibly a list or table header.

Handwritten text below the tenth line, possibly a list or table header.

Handwritten text below the eleventh line, possibly a list or table header.

Handwritten text below the twelfth line, possibly a list or table header.

Handwritten text below the thirteenth line, possibly a list or table header.

Handwritten text below the fourteenth line, possibly a list or table header.

Handwritten text below the fifteenth line, possibly a list or table header.

Handwritten text below the sixteenth line, possibly a list or table header.

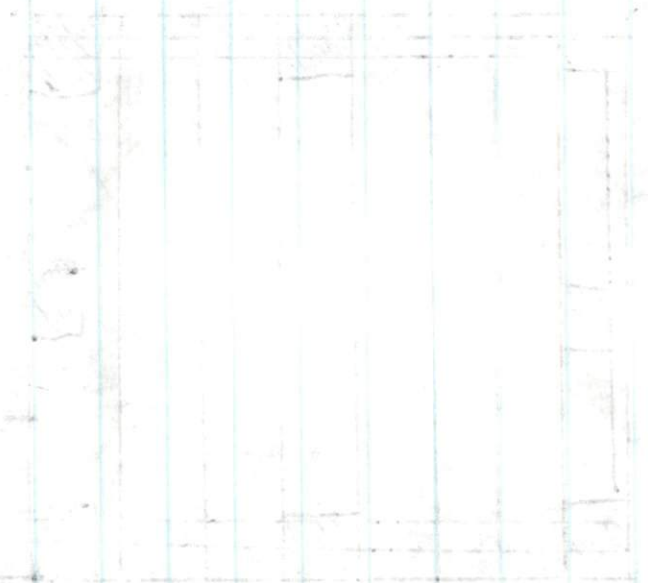
Handwritten text below the seventeenth line, possibly a list or table header.

Handwritten text below the eighteenth line, possibly a list or table header.

Handwritten text below the nineteenth line, possibly a list or table header.

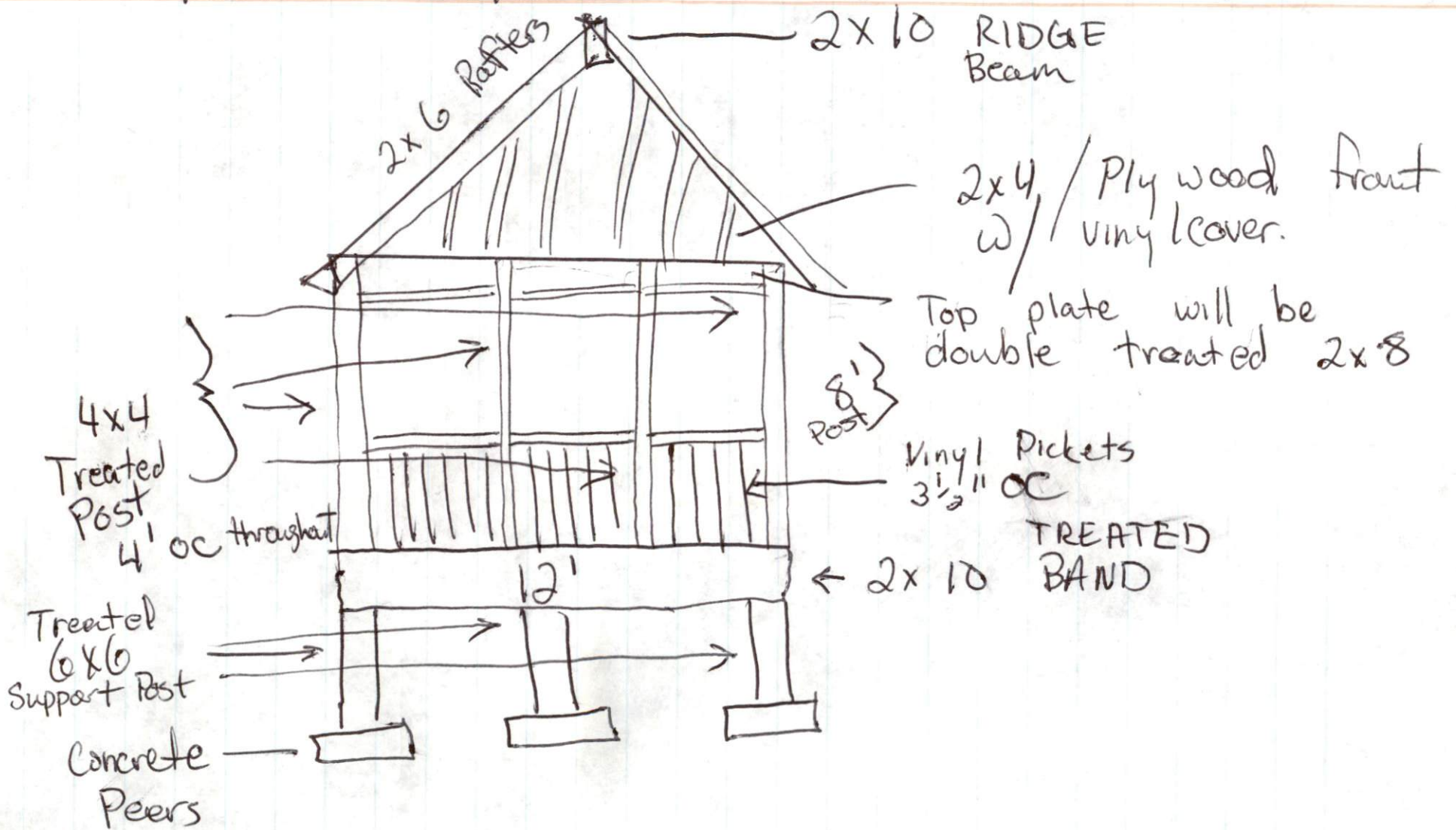
Handwritten text below the twentieth line, possibly a list or table header.

Handwritten text below the twenty-first line, possibly a list or table header.



Extensive handwritten text on the right side of the page, possibly a list, notes, or a detailed description. The text is very faint and difficult to read.

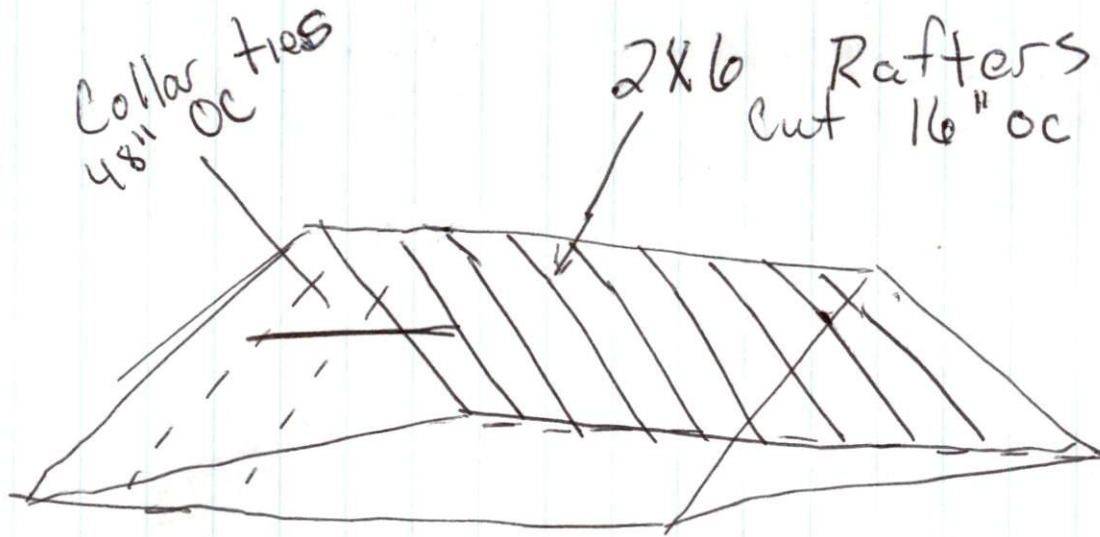
# FRONT PROFILE



EXERCISE 1



# Roof Profile



## INDEX

A. Roof will be ~~cut~~ 4/12 Pitch w/ rafter cut from 2x6

---

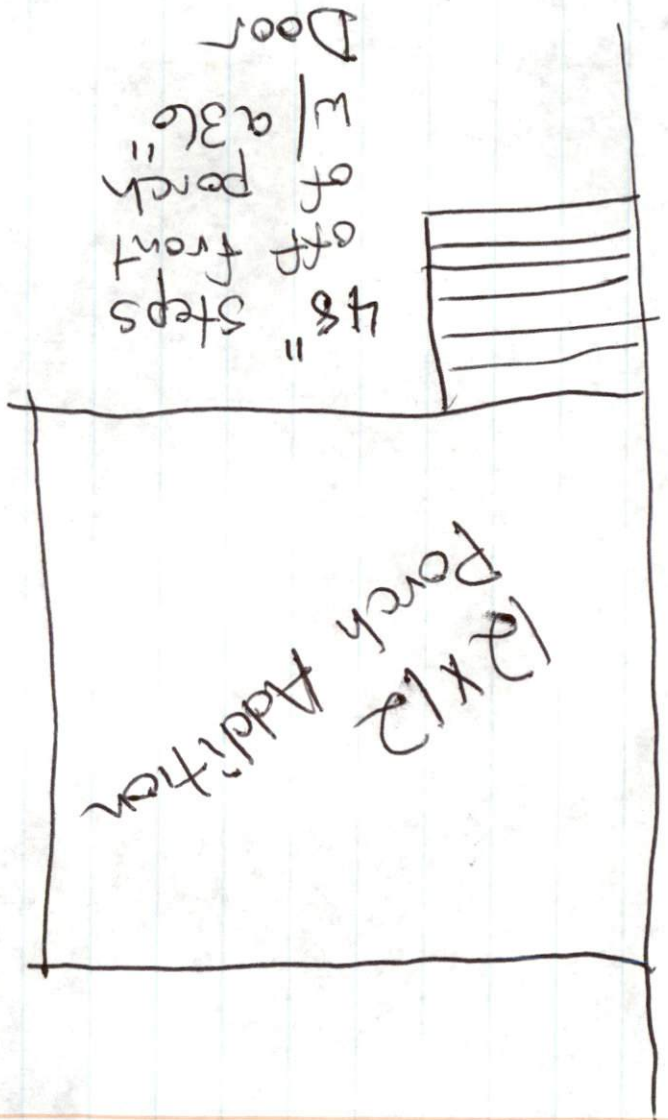
B Hurricane ties will be used on ~~each~~ every rafter

---

C. Roof will be constructed of plywood, felt paper and Asphalt shingles

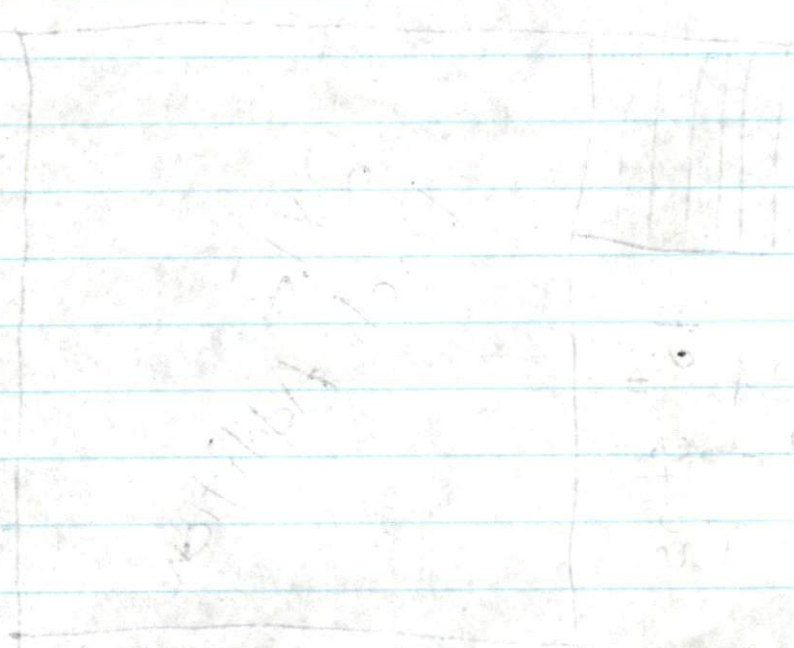


1. ...  
 2. ...  
 3. ...  
 4. ...  
 5. ...  
 6. ...  
 7. ...  
 8. ...  
 9. ...  
 10. ...



Stair Profile

11.11.19



SHEATH

100  
100