

DESIGN CRITERIA

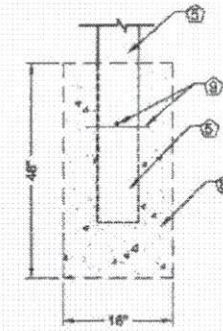
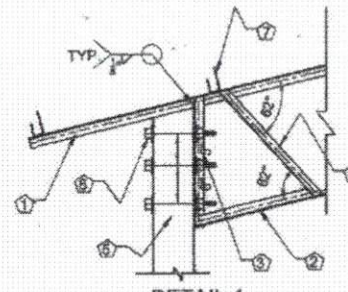
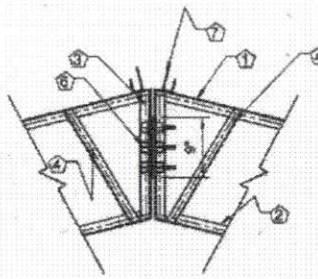
1. WIND LOAD	V _W	= 140 MPH
2. LIVE LOAD		= 10 PSF
3. DEAD LOAD		= 5 PSF
4. SNOW LOAD	W _{snow}	= 20 PSF
5. CONCRETE	FC'	= 3500 PSI

NOTES:

MAXIMUM TRUSS SPACING SHALL BE 10 FT.

FRAMING

①	L 2X2X3/16"
②	L 2X2X3/16"
③	L 2X2X3/16"
④	L 1X1X1/8"
⑤	6X6 P.T. WOOD POST
⑥	3- 5/8" A325
⑦	BRACKET
⑧	16" X 40" FND.
⑨	# 6 BAR 12" LONG



GENERAL NOTES

- A. STRUCTURAL STEEL DESIGN, FABRICATION AND ERECTION SHALL BE IN ACCORDANCE WITH AISC "SPECIFICATION FOR THE DESIGN, FABRICATION AND ERECTION OF STRUCTURAL STEEL FOR BUILDINGS," NINTH EDITION.
- B. HIGH STRENGTH BOLTING SHALL BE IN ACCORDANCE WITH AISC "SPECIFICATION FOR STRUCTURAL JOINTS USING ASTM A325 OR A490 BOLTS" (LATEST EDITION).
- C. ALL STRUCTURAL STEEL SHALL HAVE THE FOLLOWING MINIMUM YIELD STRENGTHS, SHALL BE HOT DIP GALVANIZED PER PER SABS 834 AT GROUND FLOOR, UNLESS OTHERWISE NOTED ON THE DRAWINGS.

STRUCTURAL TUBING	F _y = 48KSI
ALL OTHER	F _y = 36KSI
- D. WELDING SHALL BE IN ACCORDANCE WITH AMERICAN WELDING SOCIETY SPECIFICATION AWS A5.1 (1996).
- E. WELDING ELECTRODES USED FOR SHOP OR FIELD CONNECTIONS SHALL HAVE A MINIMUM ELECTRODE TENSILE STRENGTH OF 70 KSI. UNLESS NOTED OTHERWISE ON THE DRAWINGS, ELECTRODES SHALL CONFORM TO AWS A5.

KIPAYAT U. KHAN, PE
N.C. REG. NO. 047046

PROFESSIONAL SEAL
047046

16 APR 2018

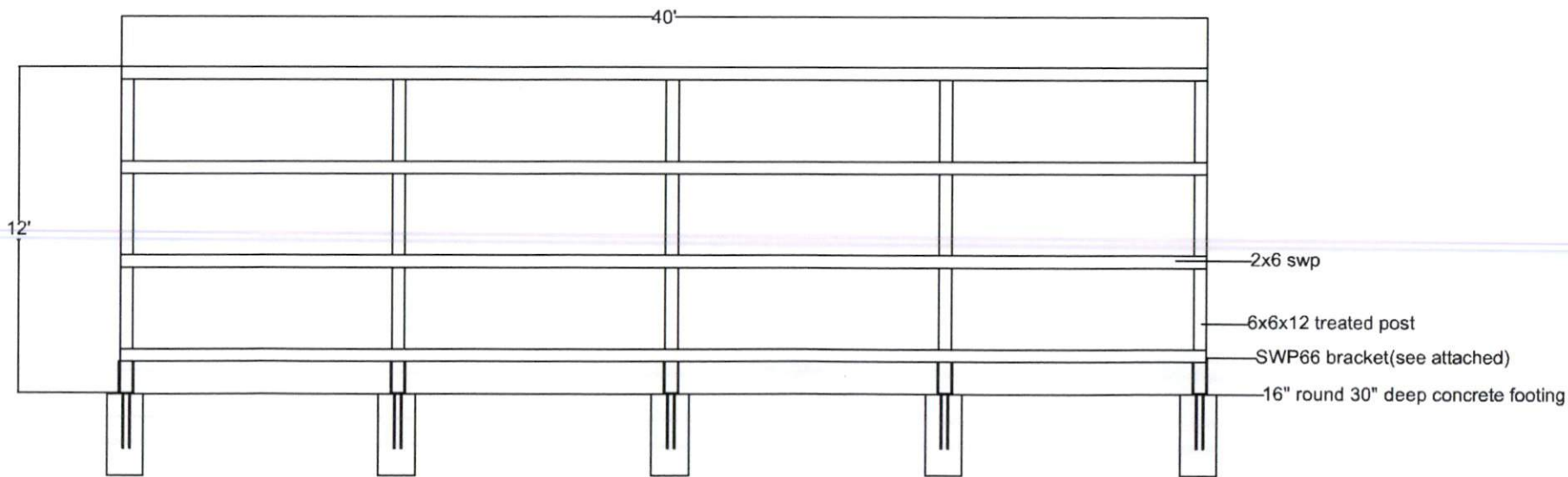
KIPAYAT U. KHAN

S.E.C.M. CORP.
6732 CEDAR RIDGE CIR.
MILTON, FL 32570
PH: 850-623-2252 FAX: 850-663-2345
EMAIL: KKHAN@SECCORP.COM

PROJECT NAME: S.A.H
LOCATION: BAYTON
COUNTY: BRANFORD

DATE: 4/18/2017	SCALE: SHOWN
DRAWN: KK	REVISION: 0
CHECKED: KK	APPROVED: 0
COVER SHEET	SHEET 1 OF 1

See attached truss sheet



Typical framing on sides, front and back