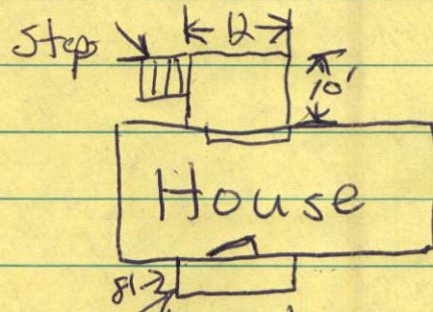


New front porch and rear deck.

7932 N.C. 27 West Lillington Nc 27546
Joseph Pike Owner (330) 327-4623

Top View



Deck Size 12' x 8' with brick steps

Footers 16" wide with block and brick veneer.

Depth of concrete will be a minimum of " deep x 16" wide.

The top of porch will be concrete and 3 1/2 minimum deep.

Rear Deck is 12' x 10' with steps. Supports will be on 6x6 treated posts on poured concrete footers. Main support beams will be 2 sets of 8'x10'x12' joined beams attached to the 6x6 posts. The deck will be 2x6'x12' spaced at 16" or less. Stair deck boards will be screwed to the 2x6 joist.

Hand rails as required by code \rightarrow Minimum height of 36"

with no gaps greater than 3 1/2"

6x6
Treated
Posts

