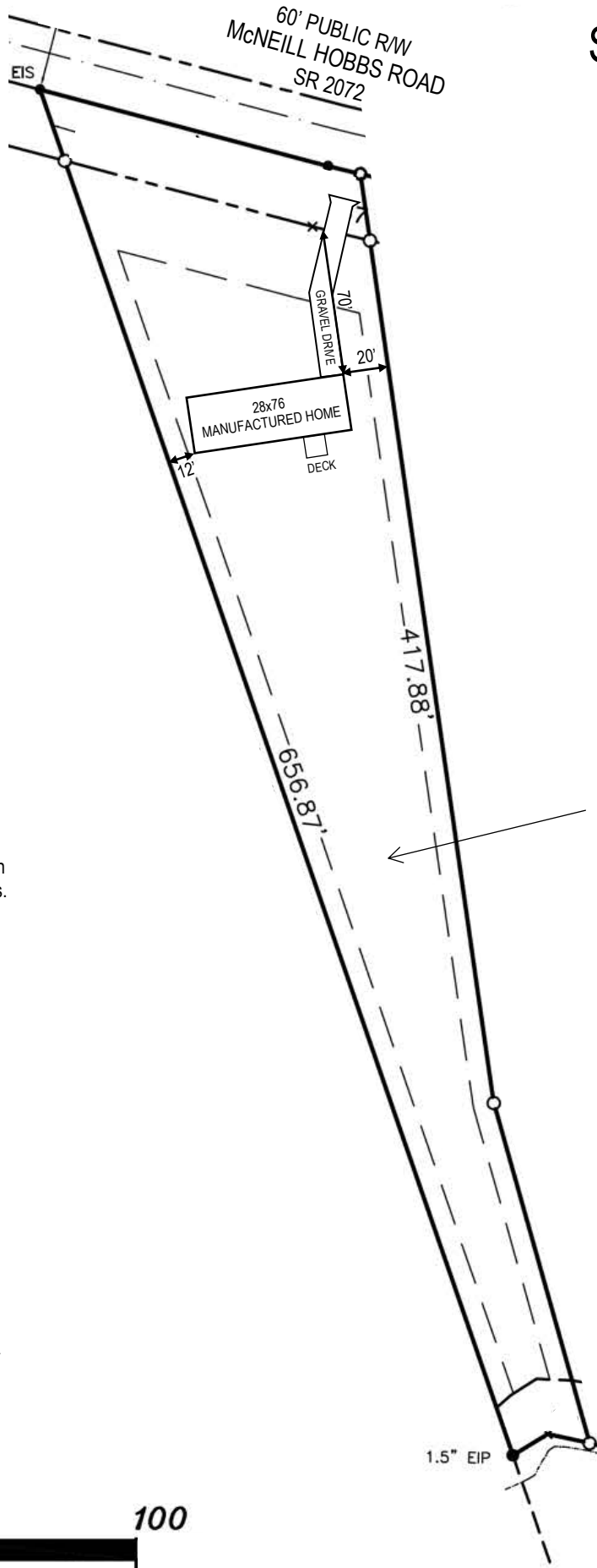


SITE PLAN



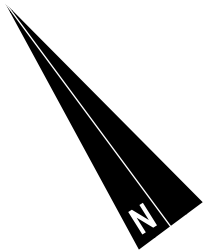
HARNETT COUNTY MINIMUM BUILDING SETBACK REQUIREMENTS

FRONT: 35' FROM R/W
REAR: 25'
SIDE: 10'
CORNER LOT SIDE: 20'

The required driveway
spacing will be 100' between
existing/proposed driveways.

SAFETY FIRST VENTURES LLC
DB 4254, PG.1713
PIN# 0548-91-4212.000

1.088 ACRES (NET)
RA-30



100 0 100



GRAPHIC SCALE - FEET