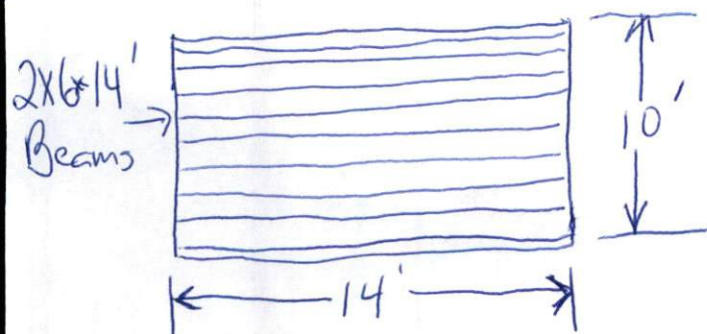
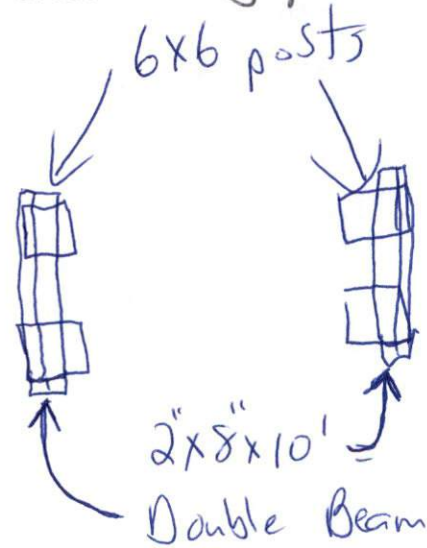
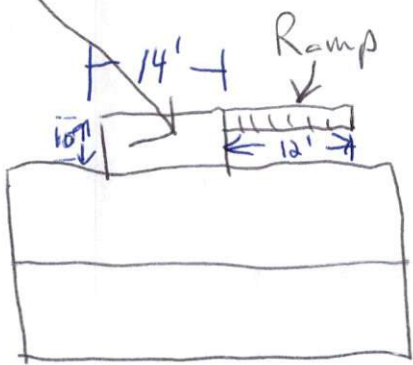


# New Back Deck at 7936 NC 27 West Lillington

- 10' x 14' x 3'4" with ramp
- Deck will be constructed of treated wood only. Main Posts will be 6x6 treated and Notched to hold double 2x8x12 beams. They will be bolted together with 5/8" Galvanized bolt/Washer and nuts.
- Joist for will be 2x6x Appropriate Length. The joist will sit on top of main 2x8 Double beams.
- Regular 1" Deck boards will be screwed to the 2x6x16 Floor Joist
- Side Railings will be a minimum of 30" High and have no gaps greater than 3 1/2" in between.
- Ramp - The entry to the deck will be a 12' long ramp with 40" long boards. The side railing will be 40" High with no gaps more than 3 1/2".

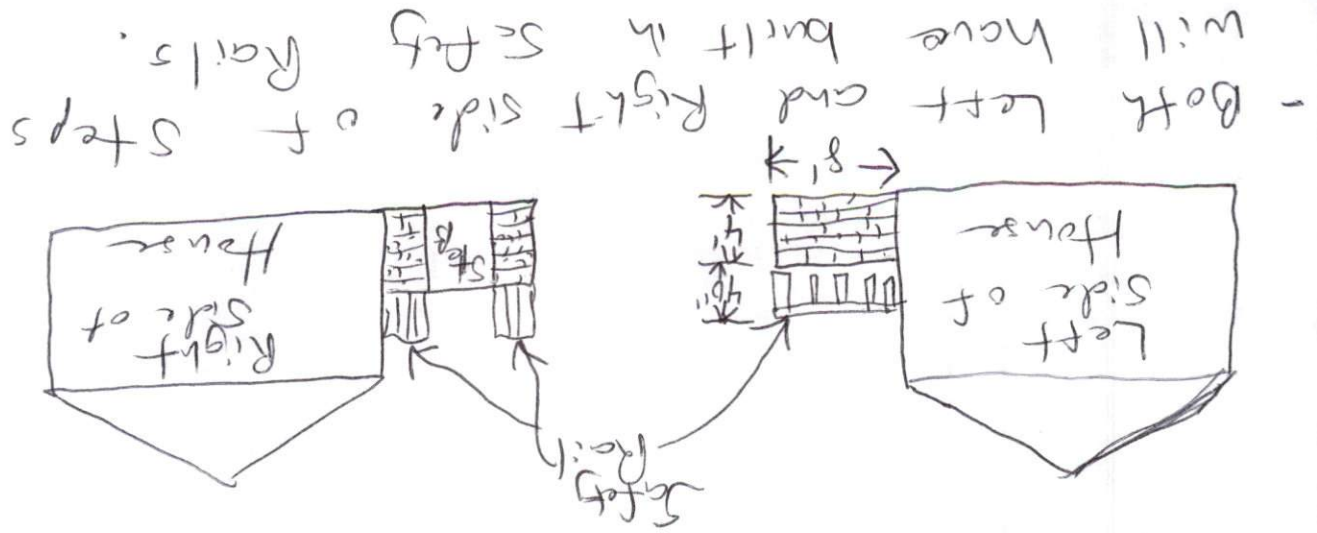
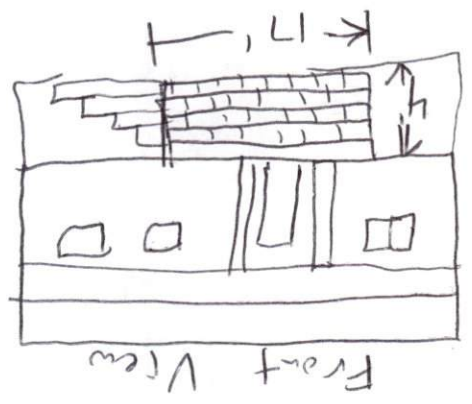
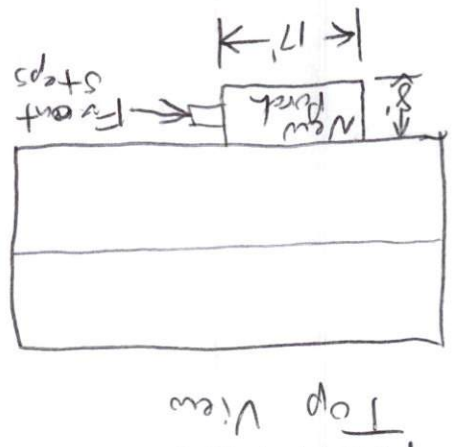
New Deck



New Front Porch at 7936 NC 27 West, Wilmington

- Size is 17' wide by 8' deep by 4' High

- New Porch will have Block Construction with Bricks on the exterior. It will also have Brush/Block Steps on the right side. The steps will be 5 in total and meet the required depth and width. Step minimum 8 1/4 Rin x 9" Run
- Handrails will be securely fastened to the cement pad and be a minimum of 30" high. No gap in the support will exceed 3 1/4" width.
- Concrete pad will be poured on top of the new porch. The porch will be 16" wide by 8" deep concrete
- Porch Footers will be 16" wide by 8" deep concrete



- Both Left and Right side of Steps will have built in Safety Rails.