

PROJECT: WOODEN DECK
 168 WOODVIEW CT,
 FUQUAY-VARINA, NC 27526,

PROJECT DESCRIPTION

NEW CONSTRUCTION FOR WOODEN DECK

BUILDING STATISTICS

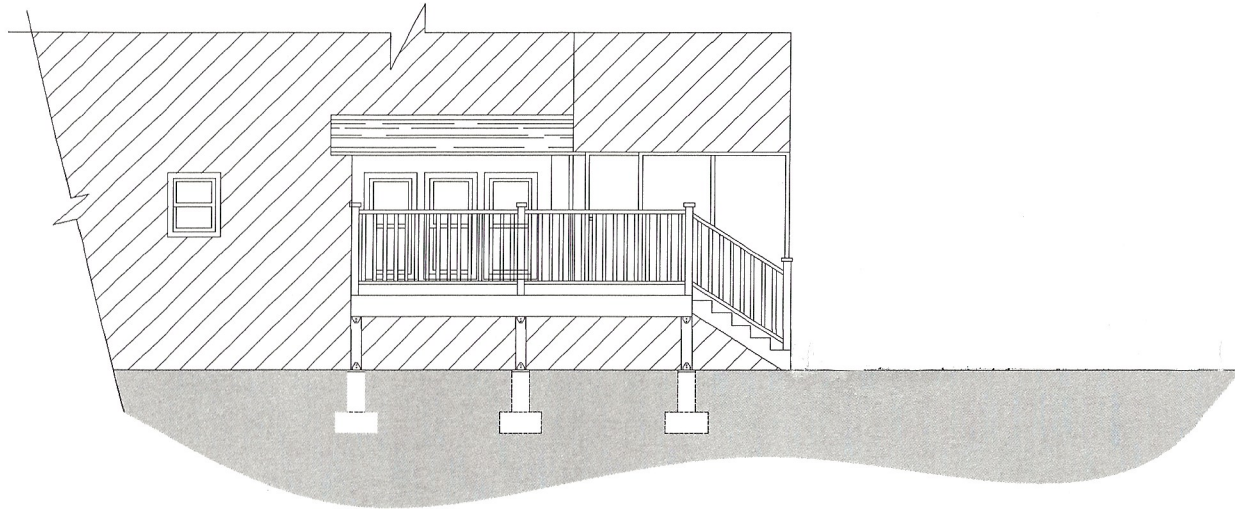
DWELLING SQFT: 1,566 SQFT
 EXISTING HOUSE AREA: TWO
 EXISTING STORIES: SINGLE FAMILY RESIDENTIAL
 CONSTRUCTION TYPE: 080652 0092 40
 APN #: 080652 0092 40
 LAND AREA: 0.59 ACRE
 MUNICIPALITY: HARNETT COUNTY

SHEET INDEX

ARCHITECTURE
 A1.0 COVER SHEET
 A1.1 SITE PLAN
 A2.0 FLOOR PLAN (WOOD DECK)
 A4.0 ELEVATIONS
 STRUCTURAL
 S1.0 FOUNDATION PLAN
 S2.0 DECK FLOOR FRAMING PLAN
 S3.0 STRUCTURAL NOTES/DETAILS
 S3.1 STRUCTURAL NOTES/DETAILS

PROJECT TEAM

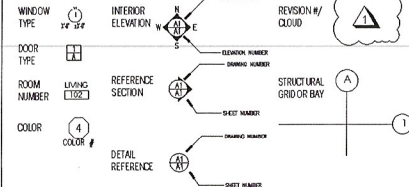
VICINITY MAP



ABBREVIATIONS

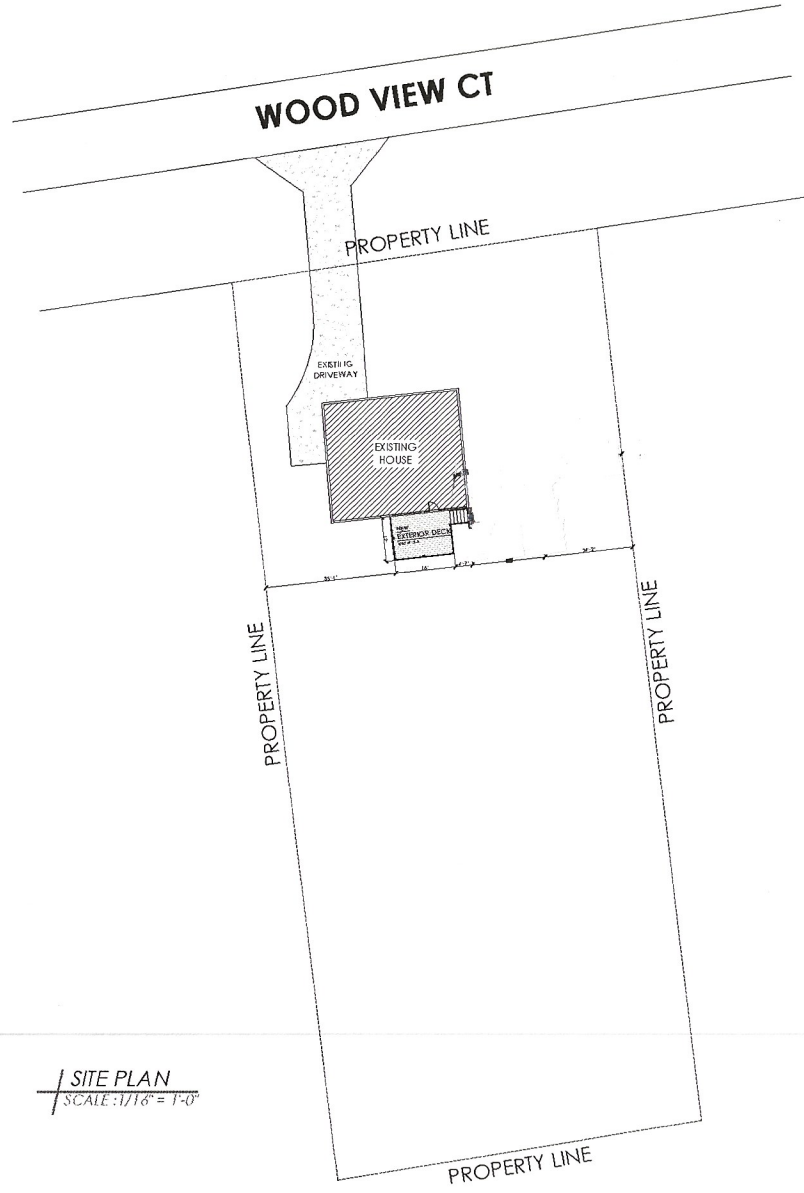
2	3	4	5	6	7	8	9	10	11	12	13	14	15	16	17	18	19	20	21	22	23	24	25	26	27	28	29	30	31	32	33	34	35	36	37	38	39	40	41	42	43	44	45	46	47	48	49	50	51	52	53	54	55	56	57	58	59	60	61	62	63	64	65	66	67	68	69	70	71	72	73	74	75	76	77	78	79	80	81	82	83	84	85	86	87	88	89	90	91	92	93	94	95	96	97	98	99	100	101	102	103	104	105	106	107	108	109	110	111	112	113	114	115	116	117	118	119	120	121	122	123	124	125	126	127	128	129	130	131	132	133	134	135	136	137	138	139	140	141	142	143	144	145	146	147	148	149	150	151	152	153	154	155	156	157	158	159	160	161	162	163	164	165	166	167	168	169	170	171	172	173	174	175	176	177	178	179	180	181	182	183	184	185	186	187	188	189	190	191	192	193	194	195	196	197	198	199	200	201	202	203	204	205	206	207	208	209	210	211	212	213	214	215	216	217	218	219	220	221	222	223	224	225	226	227	228	229	230	231	232	233	234	235	236	237	238	239	240	241	242	243	244	245	246	247	248	249	250	251	252	253	254	255	256	257	258	259	260	261	262	263	264	265	266	267	268	269	270	271	272	273	274	275	276	277	278	279	280	281	282	283	284	285	286	287	288	289	290	291	292	293	294	295	296	297	298	299	300	301	302	303	304	305	306	307	308	309	310	311	312	313	314	315	316	317	318	319	320	321	322	323	324	325	326	327	328	329	330	331	332	333	334	335	336	337	338	339	340	341	342	343	344	345	346	347	348	349	350	351	352	353	354	355	356	357	358	359	360	361	362	363	364	365	366	367	368	369	370	371	372	373	374	375	376	377	378	379	380	381	382	383	384	385	386	387	388	389	390	391	392	393	394	395	396	397	398	399	400	401	402	403	404	405	406	407	408	409	410	411	412	413	414	415	416	417	418	419	420	421	422	423	424	425	426	427	428	429	430	431	432	433	434	435	436	437	438	439	440	441	442	443	444	445	446	447	448	449	450	451	452	453	454	455	456	457	458	459	460	461	462	463	464	465	466	467	468	469	470	471	472	473	474	475	476	477	478	479	480	481	482	483	484	485	486	487	488	489	490	491	492	493	494	495	496	497	498	499	500	501	502	503	504	505	506	507	508	509	510	511	512	513	514	515	516	517	518	519	520	521	522	523	524	525	526	527	528	529	530	531	532	533	534	535	536	537	538	539	540	541	542	543	544	545	546	547	548	549	550	551	552	553	554	555	556	557	558	559	560	561	562	563	564	565	566	567	568	569	570	571	572	573	574	575	576	577	578	579	580	581	582	583	584	585	586	587	588	589	590	591	592	593	594	595	596	597	598	599	600	601	602	603	604	605	606	607	608	609	610	611	612	613	614	615	616	617	618	619	620	621	622	623	624	625	626	627	628	629	630	631	632	633	634	635	636	637	638	639	640	641	642	643	644	645	646	647	648	649	650	651	652	653	654	655	656	657	658	659	660	661	662	663	664	665	666	667	668	669	670	671	672	673	674	675	676	677	678	679	680	681	682	683	684	685	686	687	688	689	690	691	692	693	694	695	696	697	698	699	700	701	702	703	704	705	706	707	708	709	710	711	712	713	714	715	716	717	718	719	720	721	722	723	724	725	726	727	728	729	730	731	732	733	734	735	736	737	738	739	740	741	742	743	744	745	746	747	748	749	750	751	752	753	754	755	756	757	758	759	760	761	762	763	764	765	766	767	768	769	770	771	772	773	774	775	776	777	778	779	780	781	782	783	784	785	786	787	788	789	790	791	792	793	794	795	796	797	798	799	800	801	802	803	804	805	806	807	808	809	810	811	812	813	814	815	816	817	818	819	820	821	822	823	824	825	826	827	828	829	830	831	832	833	834	835	836	837	838	839	840	841	842	843	844	845	846	847	848	849	850	851	852	853	854	855	856	857	858	859	860	861	862	863	864	865	866	867	868	869	870	871	872	873	874	875	876	877	878	879	880	881	882	883	884	885	886	887	888	889	890	891	892	893	894	895	896	897	898	899	900	901	902	903	904	905	906	907	908	909	910	911	912	913	914	915	916	917	918	919	920	921	922	923	924	925	926	927	928	929	930	931	932	933	934	935	936	937	938	939	940	941	942	943	944	945	946	947	948	949	950	951	952	953	954	955	956	957	958	959	960	961	962	963	964	965	966	967	968	969	970	971	972	973	974	975	976	977	978	979	980	981	982	983	984	985	986	987	988	989	990	991	992	993	994	995	996	997	998	999	1000
---	---	---	---	---	---	---	---	----	----	----	----	----	----	----	----	----	----	----	----	----	----	----	----	----	----	----	----	----	----	----	----	----	----	----	----	----	----	----	----	----	----	----	----	----	----	----	----	----	----	----	----	----	----	----	----	----	----	----	----	----	----	----	----	----	----	----	----	----	----	----	----	----	----	----	----	----	----	----	----	----	----	----	----	----	----	----	----	----	----	----	----	----	----	----	----	----	----	-----	-----	-----	-----	-----	-----	-----	-----	-----	-----	-----	-----	-----	-----	-----	-----	-----	-----	-----	-----	-----	-----	-----	-----	-----	-----	-----	-----	-----	-----	-----	-----	-----	-----	-----	-----	-----	-----	-----	-----	-----	-----	-----	-----	-----	-----	-----	-----	-----	-----	-----	-----	-----	-----	-----	-----	-----	-----	-----	-----	-----	-----	-----	-----	-----	-----	-----	-----	-----	-----	-----	-----	-----	-----	-----	-----	-----	-----	-----	-----	-----	-----	-----	-----	-----	-----	-----	-----	-----	-----	-----	-----	-----	-----	-----	-----	-----	-----	-----	-----	-----	-----	-----	-----	-----	-----	-----	-----	-----	-----	-----	-----	-----	-----	-----	-----	-----	-----	-----	-----	-----	-----	-----	-----	-----	-----	-----	-----	-----	-----	-----	-----	-----	-----	-----	-----	-----	-----	-----	-----	-----	-----	-----	-----	-----	-----	-----	-----	-----	-----	-----	-----	-----	-----	-----	-----	-----	-----	-----	-----	-----	-----	-----	-----	-----	-----	-----	-----	-----	-----	-----	-----	-----	-----	-----	-----	-----	-----	-----	-----	-----	-----	-----	-----	-----	-----	-----	-----	-----	-----	-----	-----	-----	-----	-----	-----	-----	-----	-----	-----	-----	-----	-----	-----	-----	-----	-----	-----	-----	-----	-----	-----	-----	-----	-----	-----	-----	-----	-----	-----	-----	-----	-----	-----	-----	-----	-----	-----	-----	-----	-----	-----	-----	-----	-----	-----	-----	-----	-----	-----	-----	-----	-----	-----	-----	-----	-----	-----	-----	-----	-----	-----	-----	-----	-----	-----	-----	-----	-----	-----	-----	-----	-----	-----	-----	-----	-----	-----	-----	-----	-----	-----	-----	-----	-----	-----	-----	-----	-----	-----	-----	-----	-----	-----	-----	-----	-----	-----	-----	-----	-----	-----	-----	-----	-----	-----	-----	-----	-----	-----	-----	-----	-----	-----	-----	-----	-----	-----	-----	-----	-----	-----	-----	-----	-----	-----	-----	-----	-----	-----	-----	-----	-----	-----	-----	-----	-----	-----	-----	-----	-----	-----	-----	-----	-----	-----	-----	-----	-----	-----	-----	-----	-----	-----	-----	-----	-----	-----	-----	-----	-----	-----	-----	-----	-----	-----	-----	-----	-----	-----	-----	-----	-----	-----	-----	-----	-----	-----	-----	-----	-----	-----	-----	-----	-----	-----	-----	-----	-----	-----	-----	-----	-----	-----	-----	-----	-----	-----	-----	-----	-----	-----	-----	-----	-----	-----	-----	-----	-----	-----	-----	-----	-----	-----	-----	-----	-----	-----	-----	-----	-----	-----	-----	-----	-----	-----	-----	-----	-----	-----	-----	-----	-----	-----	-----	-----	-----	-----	-----	-----	-----	-----	-----	-----	-----	-----	-----	-----	-----	-----	-----	-----	-----	-----	-----	-----	-----	-----	-----	-----	-----	-----	-----	-----	-----	-----	-----	-----	-----	-----	-----	-----	-----	-----	-----	-----	-----	-----	-----	-----	-----	-----	-----	-----	-----	-----	-----	-----	-----	-----	-----	-----	-----	-----	-----	-----	-----	-----	-----	-----	-----	-----	-----	-----	-----	-----	-----	-----	-----	-----	-----	-----	-----	-----	-----	-----	-----	-----	-----	-----	-----	-----	-----	-----	-----	-----	-----	-----	-----	-----	-----	-----	-----	-----	-----	-----	-----	-----	-----	-----	-----	-----	-----	-----	-----	-----	-----	-----	-----	-----	-----	-----	-----	-----	-----	-----	-----	-----	-----	-----	-----	-----	-----	-----	-----	-----	-----	-----	-----	-----	-----	-----	-----	-----	-----	-----	-----	-----	-----	-----	-----	-----	-----	-----	-----	-----	-----	-----	-----	-----	-----	-----	-----	-----	-----	-----	-----	-----	-----	-----	-----	-----	-----	-----	-----	-----	-----	-----	-----	-----	-----	-----	-----	-----	-----	-----	-----	-----	-----	-----	-----	-----	-----	-----	-----	-----	-----	-----	-----	-----	-----	-----	-----	-----	-----	-----	-----	-----	-----	-----	-----	-----	-----	-----	-----	-----	-----	-----	-----	-----	-----	-----	-----	-----	-----	-----	-----	-----	-----	-----	-----	-----	-----	-----	-----	-----	-----	-----	-----	-----	-----	-----	-----	-----	-----	-----	-----	-----	-----	-----	-----	-----	-----	-----	-----	-----	-----	-----	-----	-----	-----	-----	-----	-----	-----	-----	-----	-----	-----	-----	-----	-----	-----	-----	-----	-----	-----	-----	-----	-----	-----	-----	-----	-----	-----	-----	-----	-----	-----	-----	-----	-----	-----	-----	-----	-----	-----	-----	-----	-----	-----	-----	-----	-----	-----	-----	-----	-----	-----	-----	-----	-----	-----	-----	-----	-----	-----	-----	-----	-----	-----	-----	-----	-----	-----	-----	-----	-----	-----	-----	-----	-----	-----	-----	-----	-----	-----	-----	-----	-----	-----	-----	-----	-----	-----	-----	-----	-----	-----	-----	-----	-----	-----	-----	-----	-----	-----	-----	-----	-----	-----	-----	-----	-----	-----	-----	-----	-----	-----	-----	-----	-----	-----	-----	-----	-----	-----	-----	-----	-----	-----	-----	-----	-----	-----	-----	-----	-----	-----	-----	-----	-----	-----	-----	-----	-----	-----	-----	-----	-----	-----	-----	-----	-----	-----	-----	-----	-----	-----	-----	-----	-----	-----	-----	-----	-----	-----	-----	-----	-----	-----	-----	-----	-----	-----	-----	-----	-----	-----	-----	-----	-----	-----	-----	-----	-----	-----	-----	-----	-----	-----	-----	-----	-----	-----	-----	-----	-----	-----	-----	-----	-----	-----	-----	-----	-----	-----	-----	-----	-----	-----	-----	-----	-----	-----	-----	-----	-----	-----	-----	-----	-----	-----	-----	-----	-----	-----	-----	-----	-----	------

ABBREVIATIONS



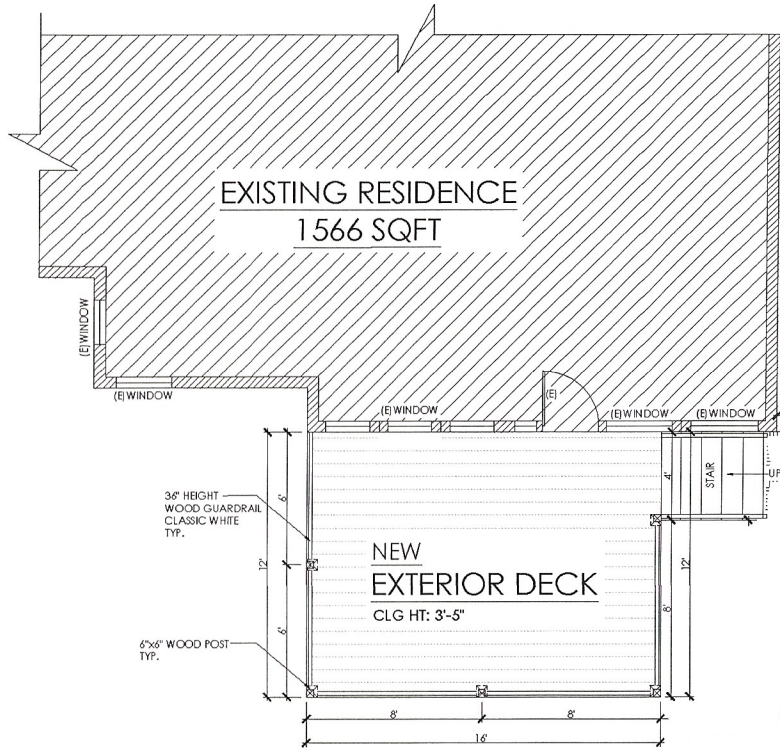
PROJECT FOR
 168 WOODVIEW CT,
 FUQUAY-VARINA, NC 27526
 NEW CONSTRUCTION DECK

A1.0



SITE PLAN
SCALE: 1/16" = 1'-0"

PROJECT FOR
168 WOODVIEW CT,
FUGUAY-VARINA, NC 27526
NEW CONSTRUCTION DECK



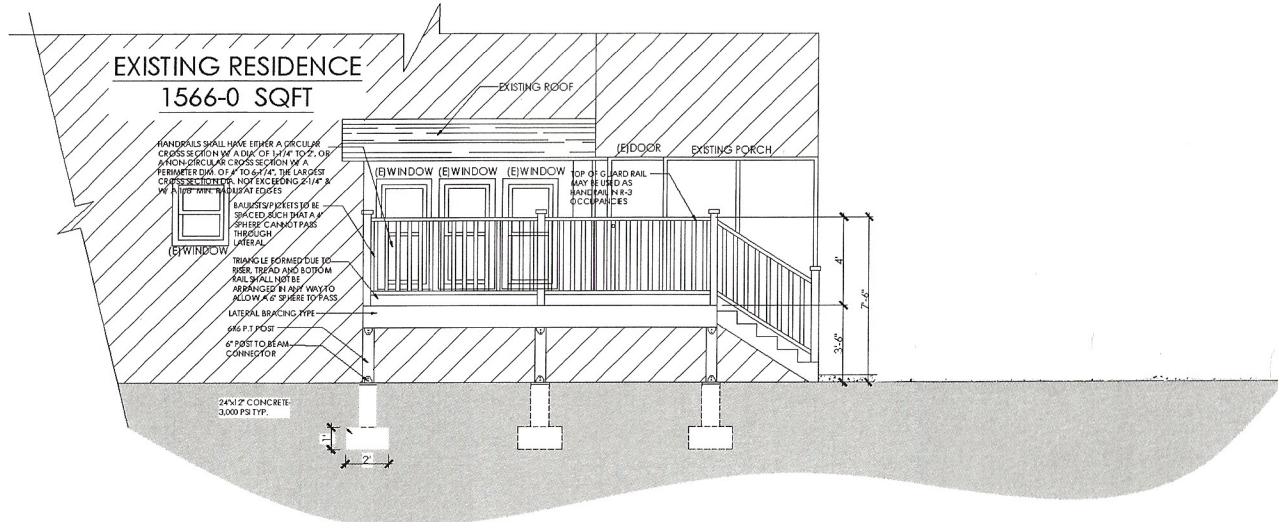
PROPOSED WOODEN DECK
FLOOR PLAN
SCALE: 3/8" = 1'-0"

- FLOOR PLAN NOTES**
1. ALL CONSTRUCTION TO MEET COUNTY CODES.
 2. CONTRACTOR TO VERIFY ALL DIMENSIONS & OPENINGS OF WINDOWS AND DOORS PRIOR TO COMMENCEMENT OF WORK.
 3. ALL DIMENSIONS ARE TO THE EDGE OF STUD, OR EDGE OF CONCRETE/LOCK LUNO.
 4. GARAGE FLOOR SURFACES SHALL BE OF APPROVED NON-COMBUSTIBLE MATERIAL.
 5. MIN. CEILING HEIGHT SHALL NOT BE LESS THAN 7 FEET.
 6. TOILET & BATHRY SHOULD HAVE A MIN OF CLEARANCE FROM PARALLEL WALL, 1' FROM ADJACENT WALL, 0' C.
 7. BATHRY AND SHOWER FLOORS AND WALLS ABOVE BATHRY WITH INSTALLED SHOWER HEADS AND IN SHOWER COMPARTMENTS SHALL BE FINISHED WITH A NON ABSORBENT SURFACE THAT SHALL EXTEND TO A HEIGHT OF NOT LESS THAN 6 FT. EACH EXTERIOR DOOR SHOULD HAVE A LANDING, WITH NO LESS THAN THE DOOR SERVED, 36" MIN IN DIRECTION OF TRAVEL WITH A SLOPE OF NO LESS THAN 1/2" PER FOOT.
 8. CONTRACTOR/MASON TO CONFIRM ALL MASONRY OPENINGS PRIOR TO CONSTRUCTION.
 9. PROVIDE ALL BLOCKING FOR TUBS, SHOWERS, AND BATH LAUNDRY KITCHEN, CABINETS AS NEEDED BY MANUFACTURER.
 10. WINDOW REQUIREMENTS FOR A CERTAINLY NEW SYSTEM WHICH CAN NOT BE COMPARED TO OLDER CODES. ALL PRODUCTS SHOULD HAVE DOCUMENTATION REFERRED TO ACCESS METHODS.
 11. FOR ALL STRUCTURES IN FLOOD ZONES, COMPLY WITH THE LAND DEVELOPMENT CODE AND LOCAL CONSTRUCTION CODES BY FLOOD HAZARD REDUCTION AND SEA TURTLES AND ANY DEVELOPMENT SPECIFIC BY WATER HAZARD MITIGATION REQUIREMENTS.
 12. CONTRACTOR IS RESPONSIBLE FOR PROVIDING MANUFACTURER'S SPECIFICATIONS AND INSTALLATION DETAILS (O.A.) FOR ALL WINDOWS, DOORS, INCLUDING OVERHEAD DOORS, ROOF MATERIALS, FLOOR VENTS, EXHAUST FANS, SOFFIT AND SIDING MATERIALS.
 13. PROVIDE SLOPPING AT ALL DOOR & WINDOW FRAMES NEAR INSIDE CORNERS.
 14. BLOCK ALL WALLS AT 6'-6" ABV FLOOR.
 15. TRIM AND/OR ADJUST TRUSSES TO PROVIDE LEVEL AND STRAIGHT CEILING AND CEILING JOISTS, ESPECIALLY IN CORNERS AND CORNER CEILING.
 16. ALL WINDOWS ARE DIMENSIONED TO CENTERLINE.
 17. ALL DOORS SHALL BE 4" FROM ADJ WALL TO O.
 18. ALL WINDOW & DOOR OPENINGS ARE NOMINAL LUNO.
 19. ALL CEILING HEIGHTS NOTED AREA 1 FT ABOVE FINISHED FLOOR.
 20. ALL NEW CONSTRUCTION SHALL BE REQUIRED TO PASS THE BLOWER DOOR TEST PER 2009 ENERGY CONSERVATION CODE R402.4.
 21. PRE-BLOCKING REGULATION BY WALLS.
 22. CALL ALL SEAL PLATES AND SHEATHING.
 23. EXTERIOR SEAL PLATE ANCHORED AT O.C AND WITHIN 24" FROM END OF WALL OR OPENING.

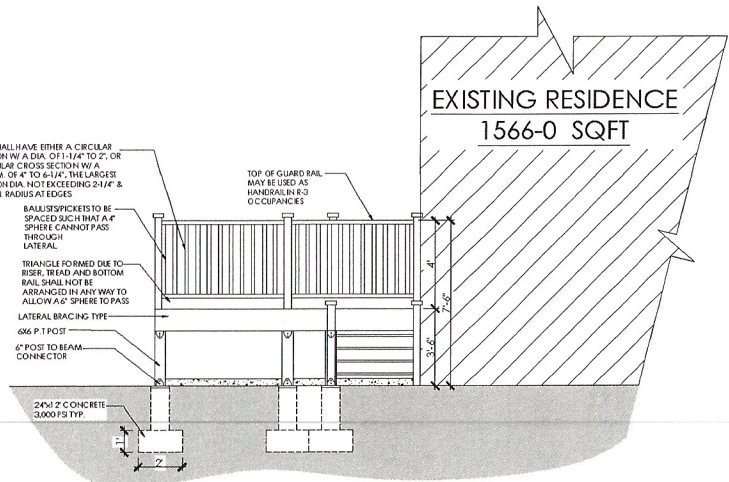
- BUILT-INS & FINISHES**
- SEE DATE SHEET FOR FINISHES & FINISHES.
1. WOOD FLOOR FINISHES TO BE DETERMINED BY CLIENT.
 2. ALL FINISHES SHALL BE COMPLETE TO THE FINISH LINE AS NOTED AT CORNERS.
 3. FINISHES TO BE DETERMINED BY CLIENT AND PROVIDED WHILE CONSTRUCTION OF THESE WORK IS IN PROGRESS.

- EGRESS NOTES**
1. EGRESS WINDOWS SHALL HAVE A MINIMUM CLEARANCE OF 20" ABOVE FINISHED FLOOR.
 2. ALL EGRESS WINDOWS SHALL BE INSTALLED TO THE FINISH LINE AS NOTED AT CORNERS.
 3. FINISHES TO BE DETERMINED BY CLIENT AND PROVIDED WHILE CONSTRUCTION OF THESE WORK IS IN PROGRESS.

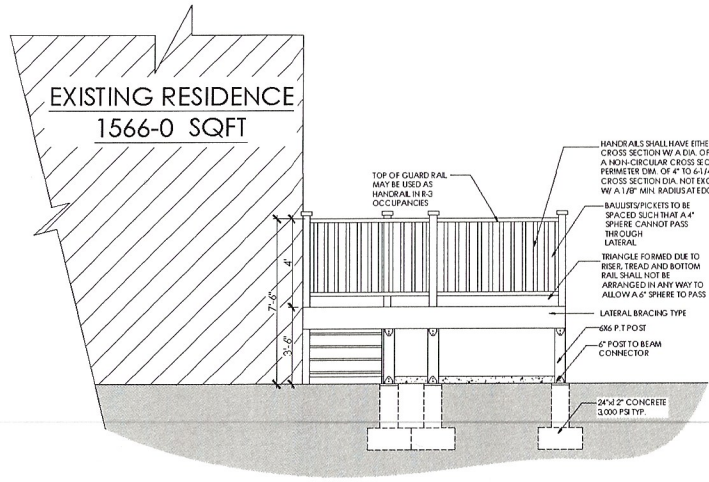
AREAS	SQUARE FEET
	NEW
WOODEN DECK	192 SQFT
TOTAL	192 SQFT



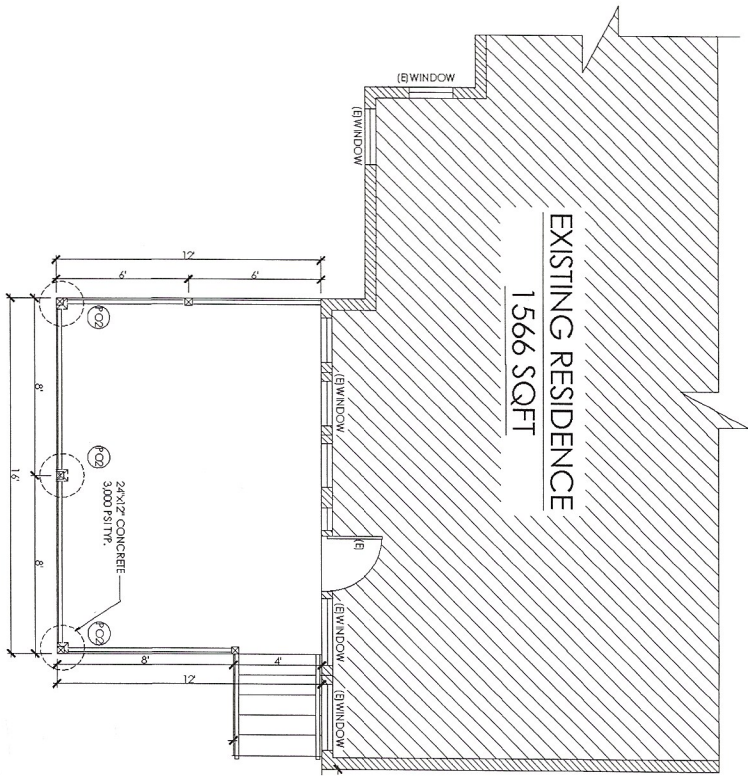
PROPOSED (DECK)
1 | REAR ELEVATION
SCALE: 3/8" = 1'-0"



PROPOSED (DECK)
2 | RIGHT ELEVATION
SCALE: 3/8" = 1'-0"

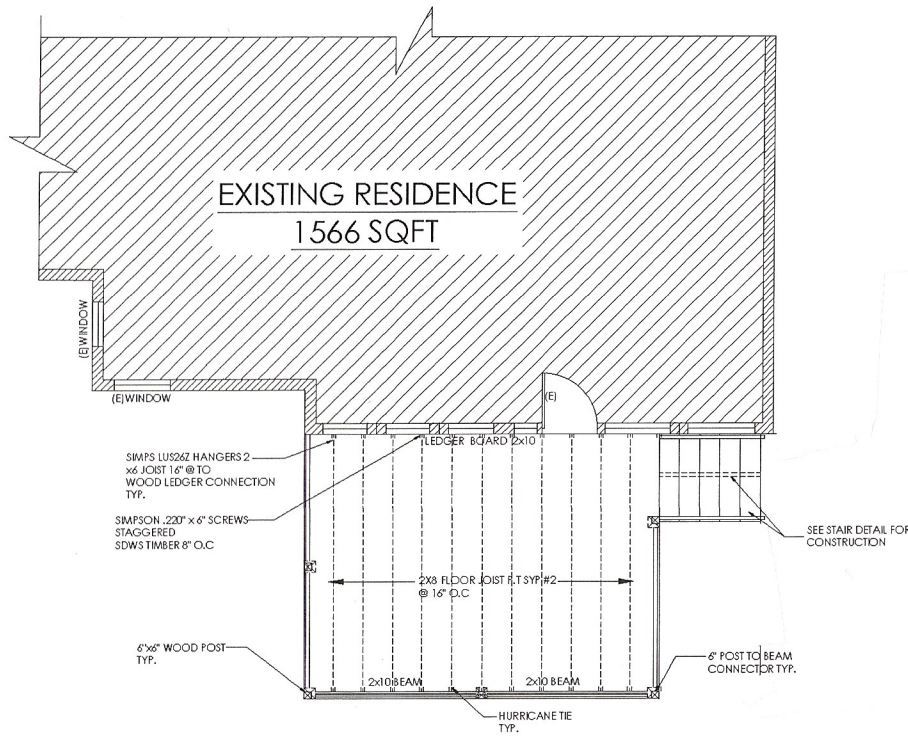


PROPOSED (DECK)
3 | LEFT ELEVATION
SCALE: 3/8" = 1'-0"



PROPOSED WOODEN DECK
FOUNDATION PLAN
SCALE: 3/8" = 1'-0"

FOOTING SCHEDULE	TYPE
FO1	12" x 12" CONCRETE
FO2	12" x 12" CONCRETE
FO3	12" x 12" CONCRETE
FO4	12" x 12" CONCRETE
FO5	12" x 12" CONCRETE
FO6	12" x 12" CONCRETE
FO7	12" x 12" CONCRETE
FO8	12" x 12" CONCRETE
FO9	12" x 12" CONCRETE
FO10	12" x 12" CONCRETE
FO11	12" x 12" CONCRETE
FO12	12" x 12" CONCRETE
FO13	12" x 12" CONCRETE
FO14	12" x 12" CONCRETE
FO15	12" x 12" CONCRETE
FO16	12" x 12" CONCRETE
FO17	12" x 12" CONCRETE
FO18	12" x 12" CONCRETE
FO19	12" x 12" CONCRETE
FO20	12" x 12" CONCRETE
FO21	12" x 12" CONCRETE
FO22	12" x 12" CONCRETE
FO23	12" x 12" CONCRETE
FO24	12" x 12" CONCRETE
FO25	12" x 12" CONCRETE
FO26	12" x 12" CONCRETE
FO27	12" x 12" CONCRETE
FO28	12" x 12" CONCRETE
FO29	12" x 12" CONCRETE
FO30	12" x 12" CONCRETE
FO31	12" x 12" CONCRETE
FO32	12" x 12" CONCRETE
FO33	12" x 12" CONCRETE
FO34	12" x 12" CONCRETE
FO35	12" x 12" CONCRETE
FO36	12" x 12" CONCRETE
FO37	12" x 12" CONCRETE
FO38	12" x 12" CONCRETE
FO39	12" x 12" CONCRETE
FO40	12" x 12" CONCRETE
FO41	12" x 12" CONCRETE
FO42	12" x 12" CONCRETE
FO43	12" x 12" CONCRETE
FO44	12" x 12" CONCRETE
FO45	12" x 12" CONCRETE
FO46	12" x 12" CONCRETE
FO47	12" x 12" CONCRETE
FO48	12" x 12" CONCRETE
FO49	12" x 12" CONCRETE
FO50	12" x 12" CONCRETE
FO51	12" x 12" CONCRETE
FO52	12" x 12" CONCRETE
FO53	12" x 12" CONCRETE
FO54	12" x 12" CONCRETE
FO55	12" x 12" CONCRETE
FO56	12" x 12" CONCRETE
FO57	12" x 12" CONCRETE
FO58	12" x 12" CONCRETE
FO59	12" x 12" CONCRETE
FO60	12" x 12" CONCRETE
FO61	12" x 12" CONCRETE
FO62	12" x 12" CONCRETE
FO63	12" x 12" CONCRETE
FO64	12" x 12" CONCRETE
FO65	12" x 12" CONCRETE
FO66	12" x 12" CONCRETE
FO67	12" x 12" CONCRETE
FO68	12" x 12" CONCRETE
FO69	12" x 12" CONCRETE
FO70	12" x 12" CONCRETE
FO71	12" x 12" CONCRETE
FO72	12" x 12" CONCRETE
FO73	12" x 12" CONCRETE
FO74	12" x 12" CONCRETE
FO75	12" x 12" CONCRETE
FO76	12" x 12" CONCRETE
FO77	12" x 12" CONCRETE
FO78	12" x 12" CONCRETE
FO79	12" x 12" CONCRETE
FO80	12" x 12" CONCRETE
FO81	12" x 12" CONCRETE
FO82	12" x 12" CONCRETE
FO83	12" x 12" CONCRETE
FO84	12" x 12" CONCRETE
FO85	12" x 12" CONCRETE
FO86	12" x 12" CONCRETE
FO87	12" x 12" CONCRETE
FO88	12" x 12" CONCRETE
FO89	12" x 12" CONCRETE
FO90	12" x 12" CONCRETE
FO91	12" x 12" CONCRETE
FO92	12" x 12" CONCRETE
FO93	12" x 12" CONCRETE
FO94	12" x 12" CONCRETE
FO95	12" x 12" CONCRETE
FO96	12" x 12" CONCRETE
FO97	12" x 12" CONCRETE
FO98	12" x 12" CONCRETE
FO99	12" x 12" CONCRETE
FO100	12" x 12" CONCRETE



PROPOSED WOODEN DECK
FLOOR FRAMING PLAN
SCALE: 3/8" = 1'-0"

LINTEL TYPES

8" WIDE REINFORCED CONCRETE
MIN. 45 PERCENT STEEL
MIN. 45 PERCENT STEEL
MIN. 45 PERCENT STEEL
MIN. 45 PERCENT STEEL
MIN. 45 PERCENT STEEL

FORM & POUR TYPES

B8.16 5T 5B (2)

2" OF REBAR FOR LAYER
REBAR SPACING
REBAR SIZE & SPACING
REBAR HITCHES
MIN. 45 PERCENT STEEL
MIN. 45 PERCENT STEEL

NO.	TYPE	CONC. REINFORCEMENT	FORM
B01	M 12" x 12"	4" DIA. @ 12" O.C.	12" x 12" x 12"
B02	M 12" x 12"	4" DIA. @ 12" O.C.	12" x 12" x 12"
B03	M 12" x 12"	4" DIA. @ 12" O.C.	12" x 12" x 12"
B04	M 12" x 12"	4" DIA. @ 12" O.C.	12" x 12" x 12"
B05	M 12" x 12"	4" DIA. @ 12" O.C.	12" x 12" x 12"

WOOD BEAM TYPES

W3.12

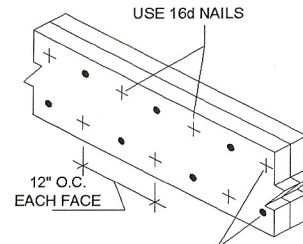
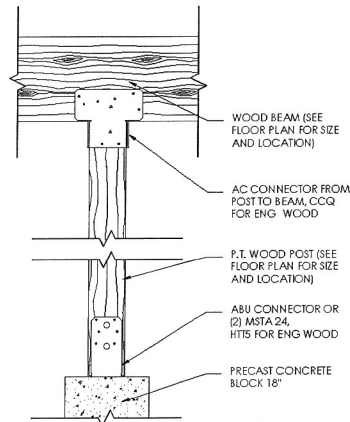
3" OF FLUTE
MIN. 45 PERCENT STEEL
MIN. 45 PERCENT STEEL

WOOD BEAM SCHEDULE

NO.	TYPE	SIZE	SPACING	CONC.	FORM
W08	3048 SAWN	8" x 8"	8"	8"	8"
W09	3048 SAWN	8" x 8"	8"	8"	8"
W10	3048 SAWN	8" x 8"	8"	8"	8"
W11	3048 SAWN	8" x 8"	8"	8"	8"
W12	3048 SAWN	8" x 8"	8"	8"	8"
E01	ENGINEERED WOOD	3.5" x 7"	16"	16"	16"
E02	ENGINEERED WOOD	3.5" x 7"	16"	16"	16"
E03	ENGINEERED WOOD	3.5" x 7"	16"	16"	16"
E04	ENGINEERED WOOD	3.5" x 7"	16"	16"	16"
E05	ENGINEERED WOOD	3.5" x 7"	16"	16"	16"
E06	ENGINEERED WOOD	3.5" x 7"	16"	16"	16"

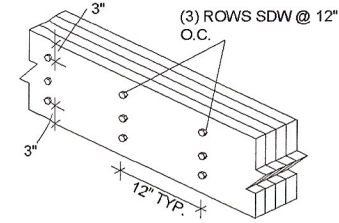
COLUMN SCHEDULE

NO.	TYPE	SIZE	CONC.	FORM
C01	3048 SAWN	8" x 8"	CONC.	8" x 8" x 8"
C02	3048 SAWN	8" x 8"	CONC.	8" x 8" x 8"
C03	3048 SAWN	8" x 8"	CONC.	8" x 8" x 8"
C04	ENGINEERED WOOD	3.5" x 7"	CONC.	8" x 8" x 8"
C05	ENGINEERED WOOD	3.5" x 7"	CONC.	8" x 8" x 8"
C06	ENGINEERED WOOD	3.5" x 7"	CONC.	8" x 8" x 8"

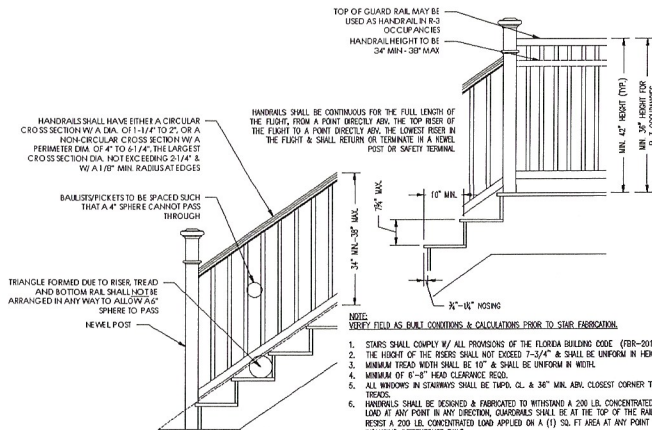


THREE ROWS OVER 12" DEEP
(USE FOR UP TO 3 PLYS MAXIMUM)

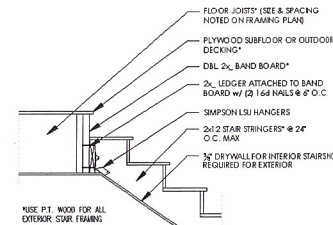
NAILED CONNECTION



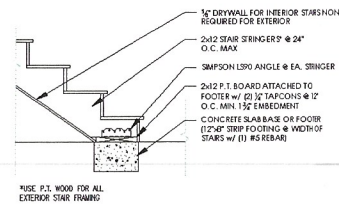
4 PLY LVL BEAM CONNECTION DETAIL



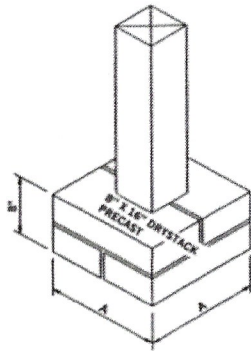
- NOTES:
VERIFY FIELD AS BUILT CONDITIONS & CALCULATIONS PRIOR TO START FABRICATION.
1. STAIRS SHALL COMPLY W/ ALL PROVISIONS OF THE FLORIDA BUILDING CODE (FBC-2017).
 2. THE HEIGHT OF THE RISERS SHALL NOT EXCEED 7-3/4\"/>



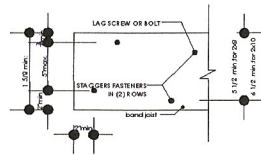
6 INCH POST TO BEAM CONNECTOR



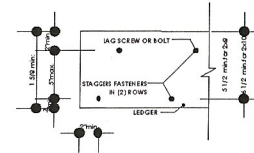
HURRICANE TIES



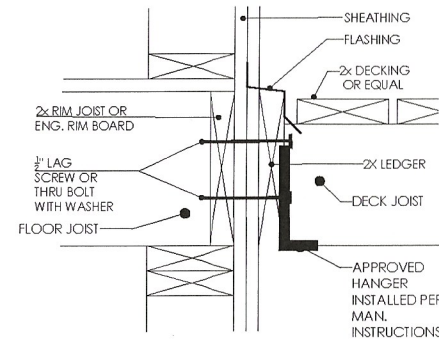
01 - Typ. Footing Detail



06 - Band Joist Connection



05 - Ledger Connection



03 - Typ. Ledger Detail