

Drawing for

Footings: 16" wide

||

8" deep

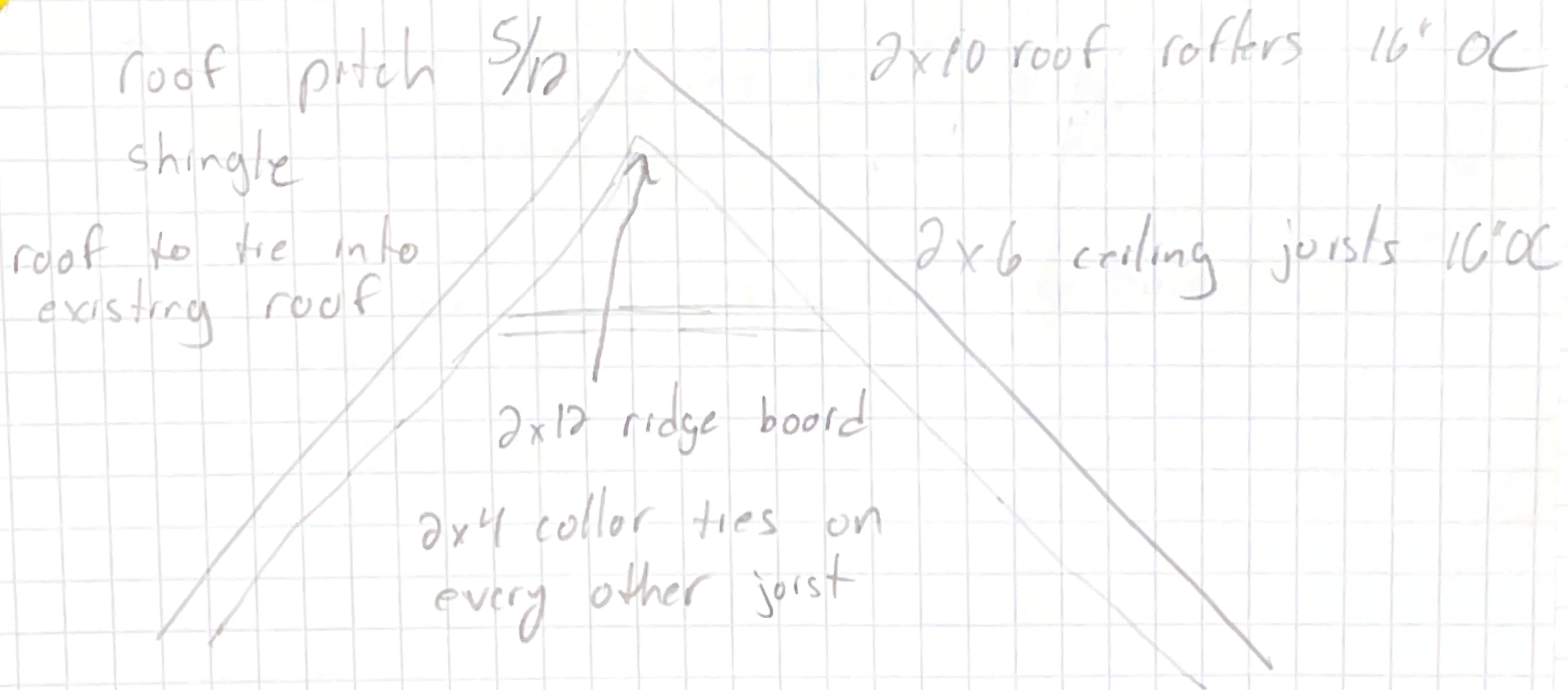
concrete

||

#4 rebar to tie into current

footing

Foundation will be 30" high using
8" x 8" x 16" concrete block

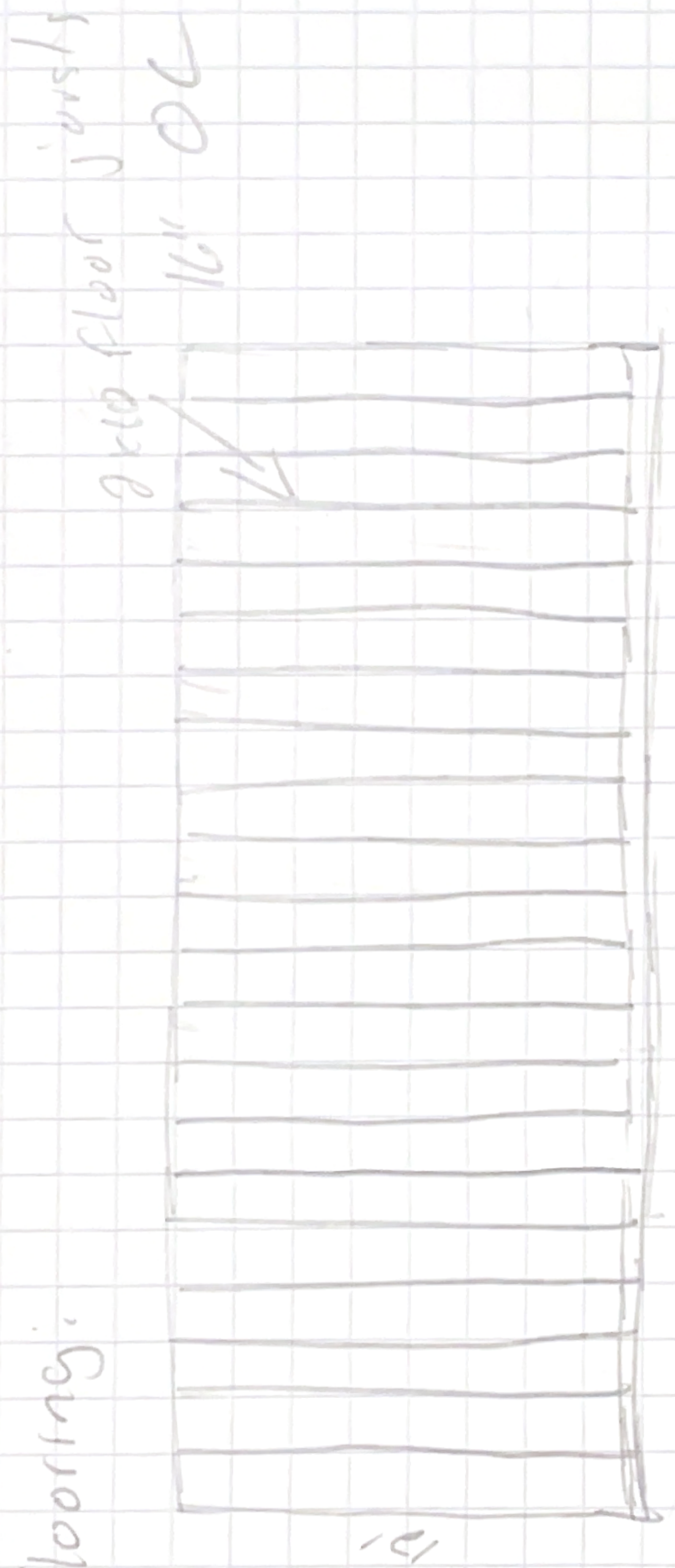


clips will tie each rafter into the top plate

Walls: wood framed using 2x4s
16" OC
8' tall

will be tied into current house

Flooring:



Joists will be supported by a ledger
2x12 girders + bonds

Windows will be 20' from floor to bottom of
window

size: 24" x 36"