

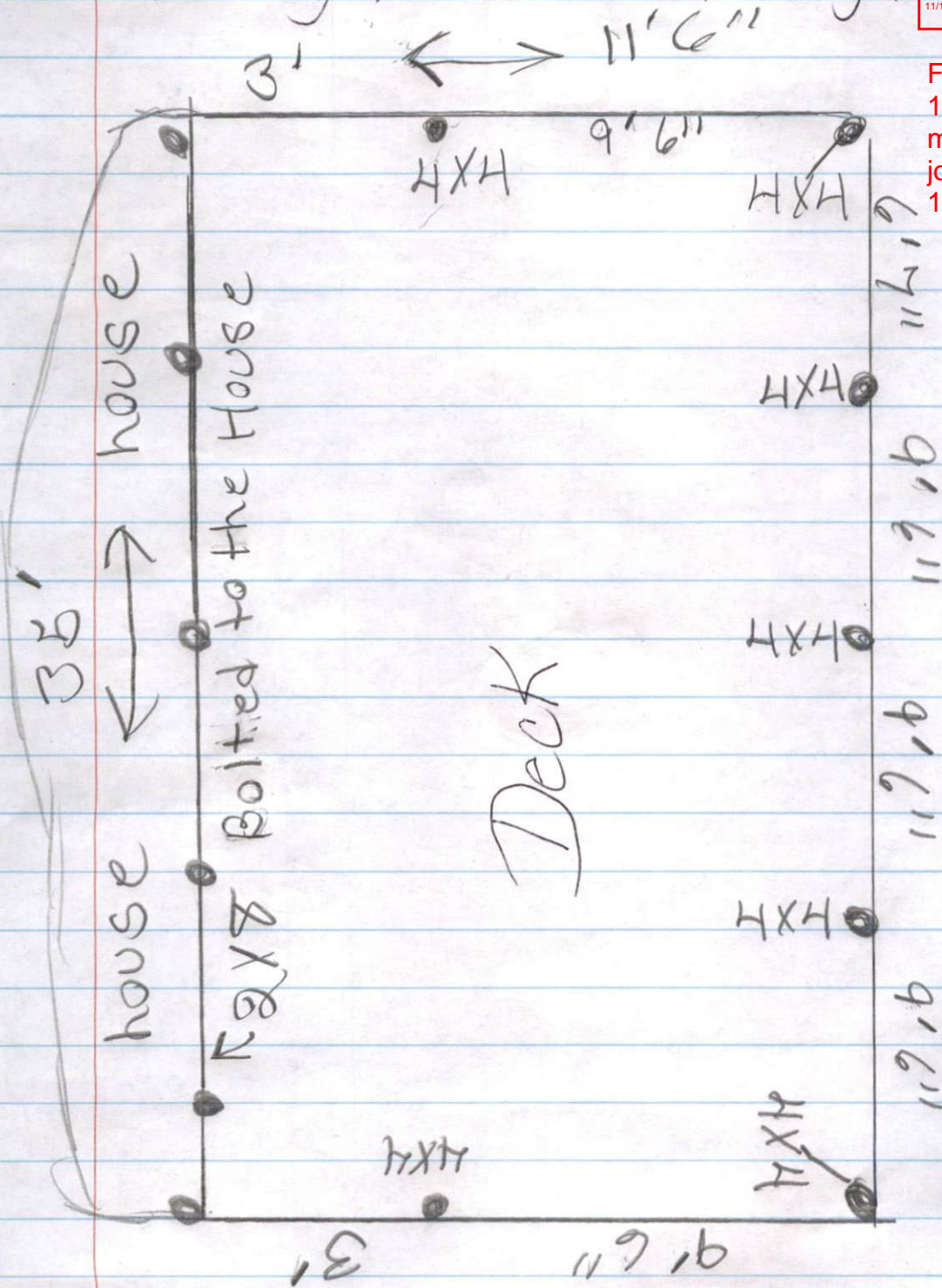
# Chalmers

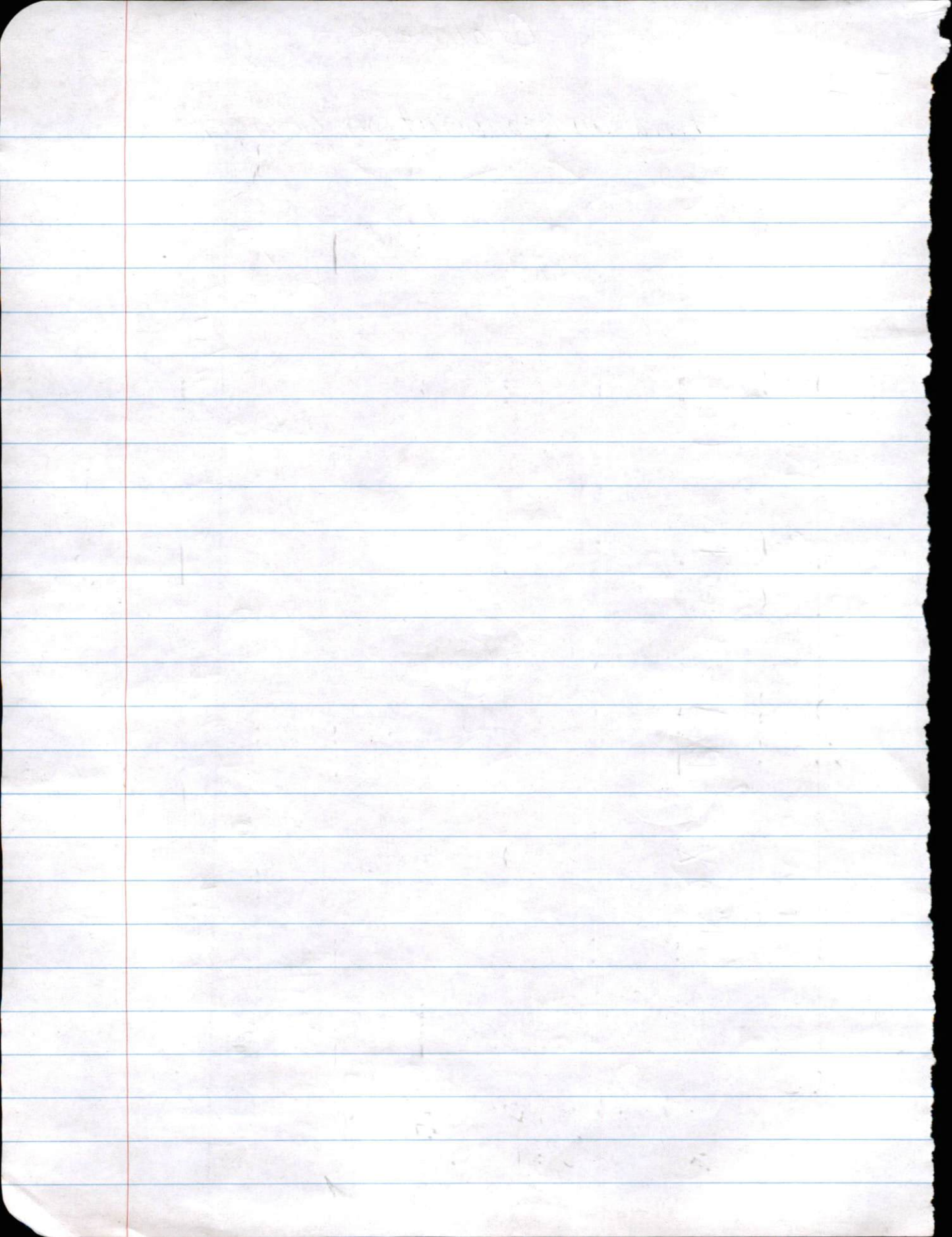
1

## Footings and foundation design



Footings shall be 16x16x 8 minimum. Floor joists shall be run 11'6" direction

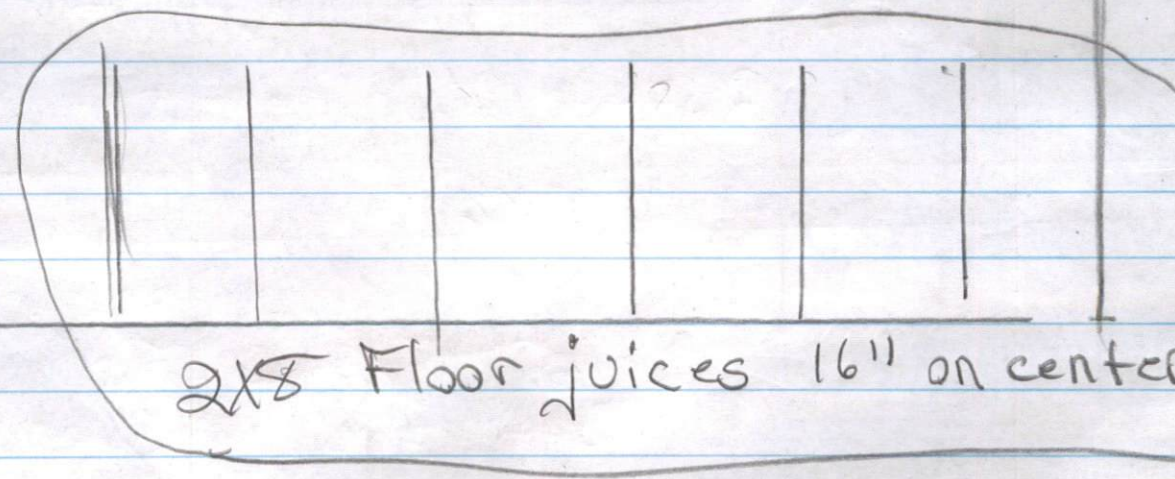
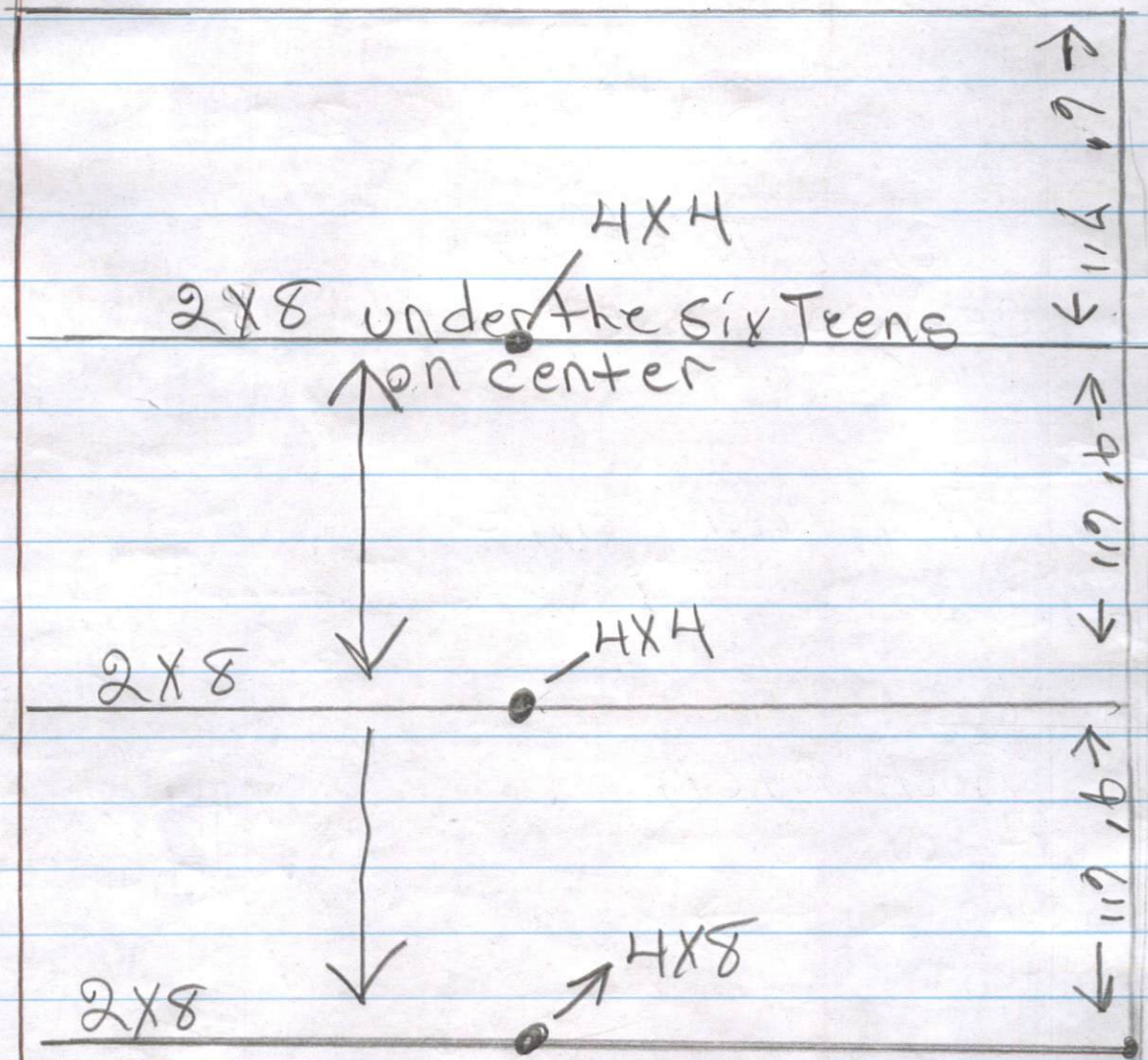




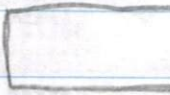
Dimensions on Plan, and Plan drawn to scale  
Chalmers

2+3

← 11' 6" →



4

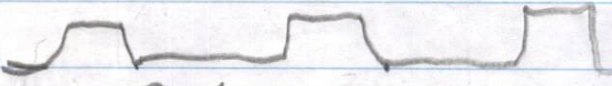
Rafter size  
2x6 

RAFTER size

5 Ceiling Joist size  
ceiling joist size is 2x6

Roof covering Type

6 Black Tin

25 gauge 

Roof Pitch

7 it could Be A  
10 or 12 Pitch

1x4 16" center

2x6 2x6 2x6

RAFTER 2' on center

2x6

1, 2, 3, 4

2 is 2x8x2  
Beam the  
RAFTER

3

Are on  
For  
Support

4

2x8 Floor Joists  
on center

16" 16" 16" 16" 16" 16" 16" 16"

house

36' →

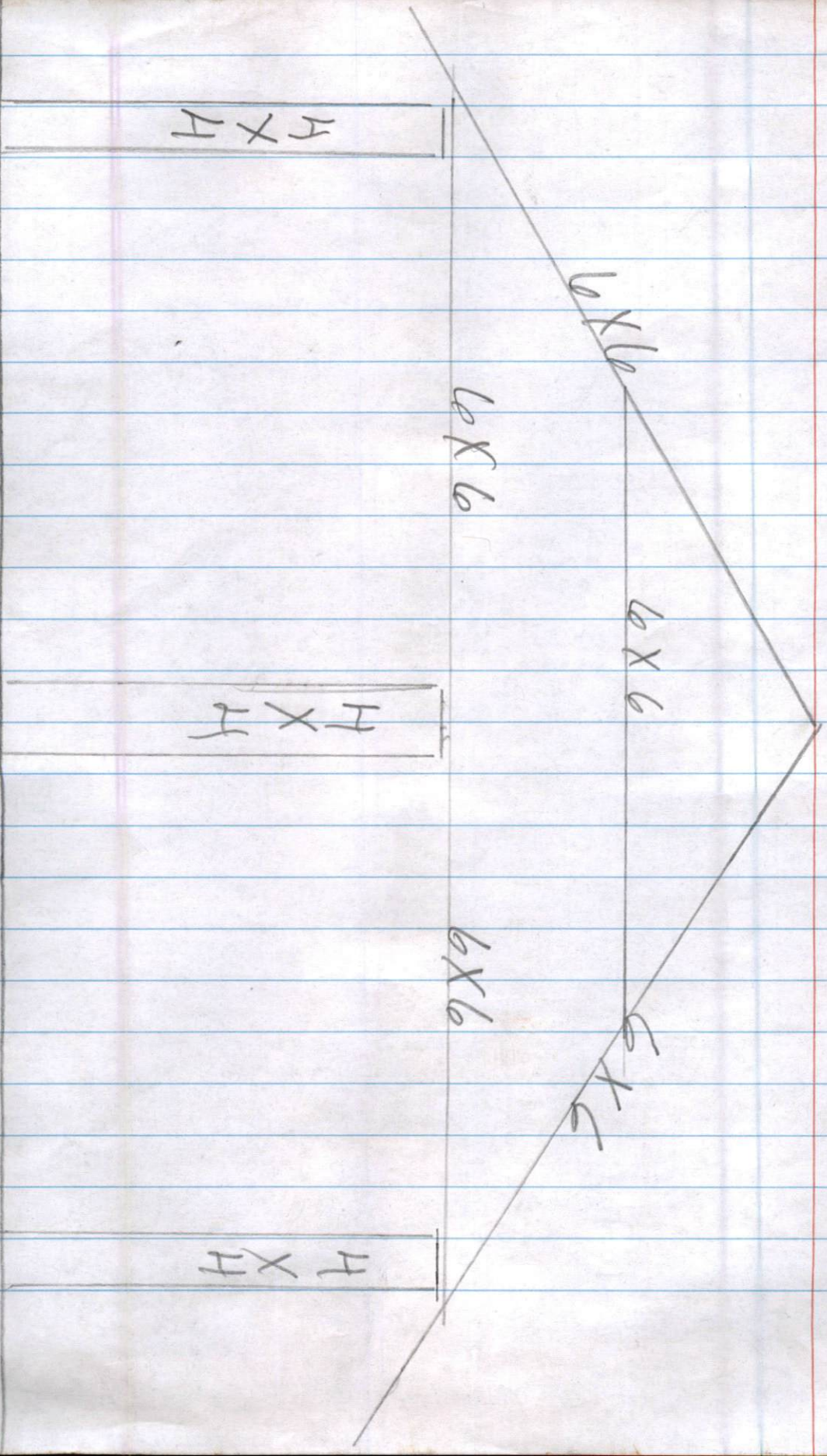
→ 11' 6" →

Dimensions on plan and plan drawn to scale

2+3

I Love you.





The Floor ↘

H X H

H X H

H X H

6 X 6

6 X 6

6 X 6

6 X 6

6 X 6

RAFTERS  
2' on center  
with 1x4 16"  
on center

2x8 with  
2 put together

4  
x  
4

11' 6"

house

