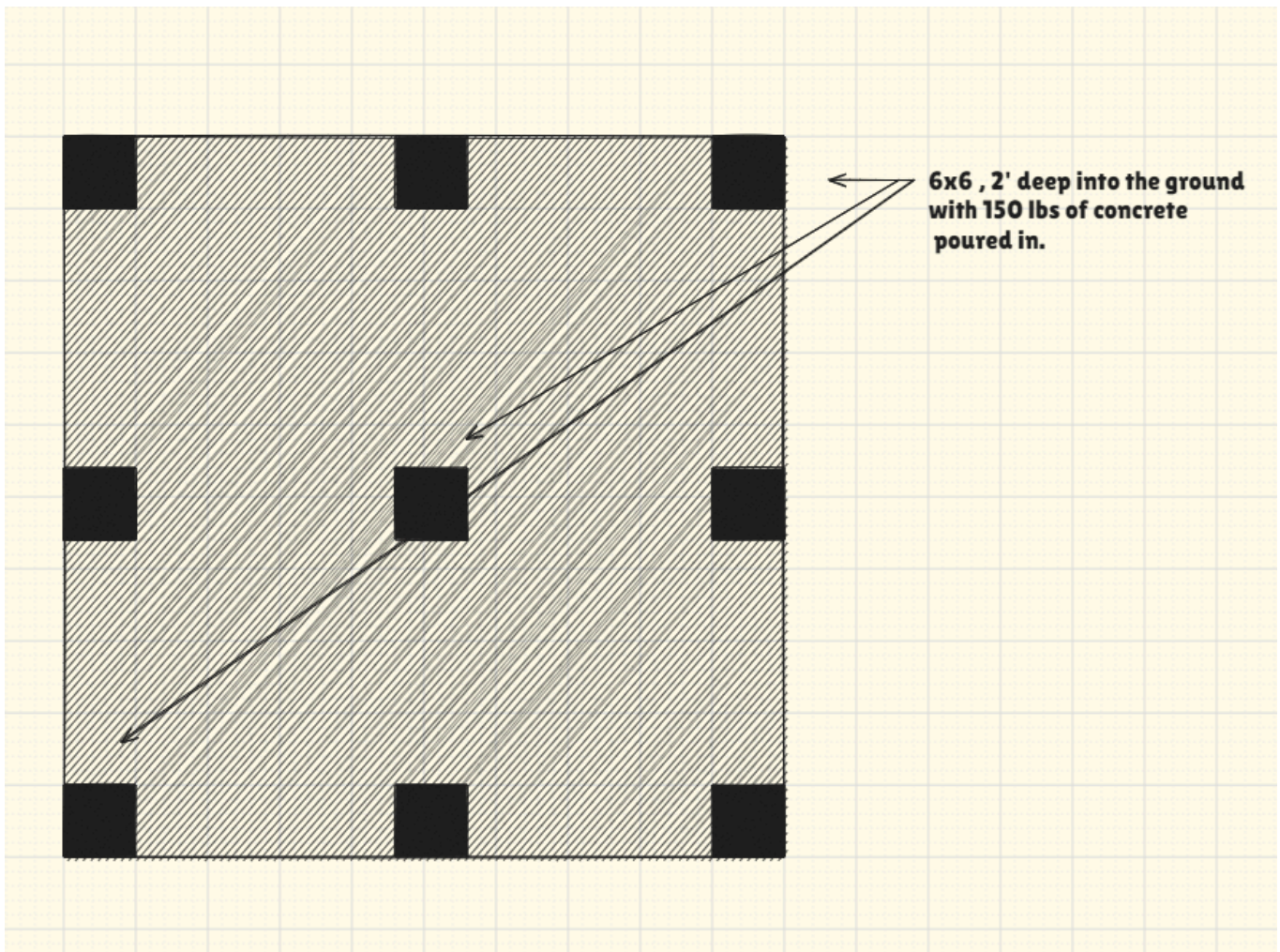


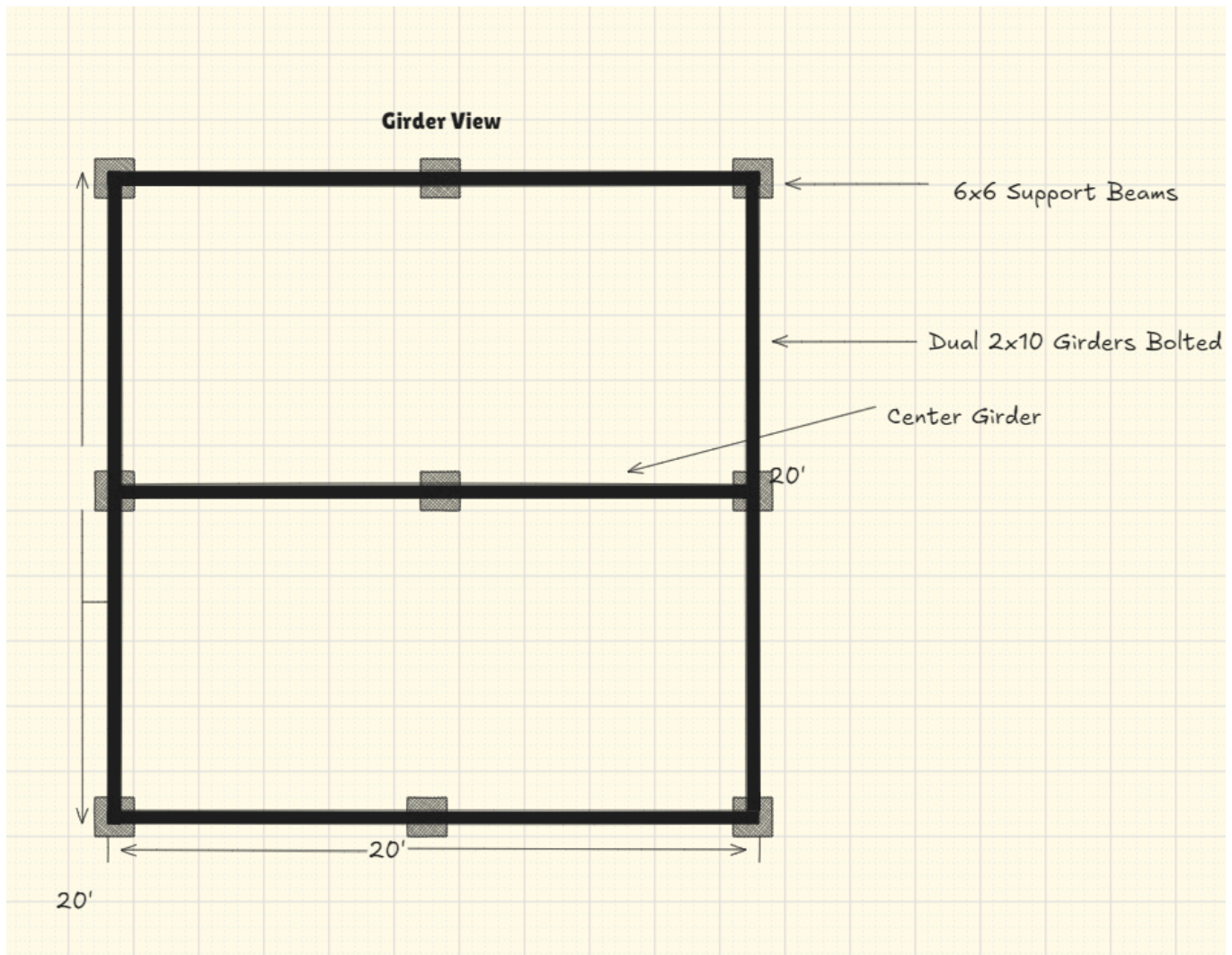
# Deck Plan Resubmission

## Deck Foundation

- 9, 6x6 support beams for the deck , 2' deep with 150lbs of concrete poured in.
- Support beams height at the deck floor will be at 1', 4' and 6' because of the slope.
- Support beams will span through the deck to support the roof. They will be interconnected by 12" x 3/4" Hex bolts.

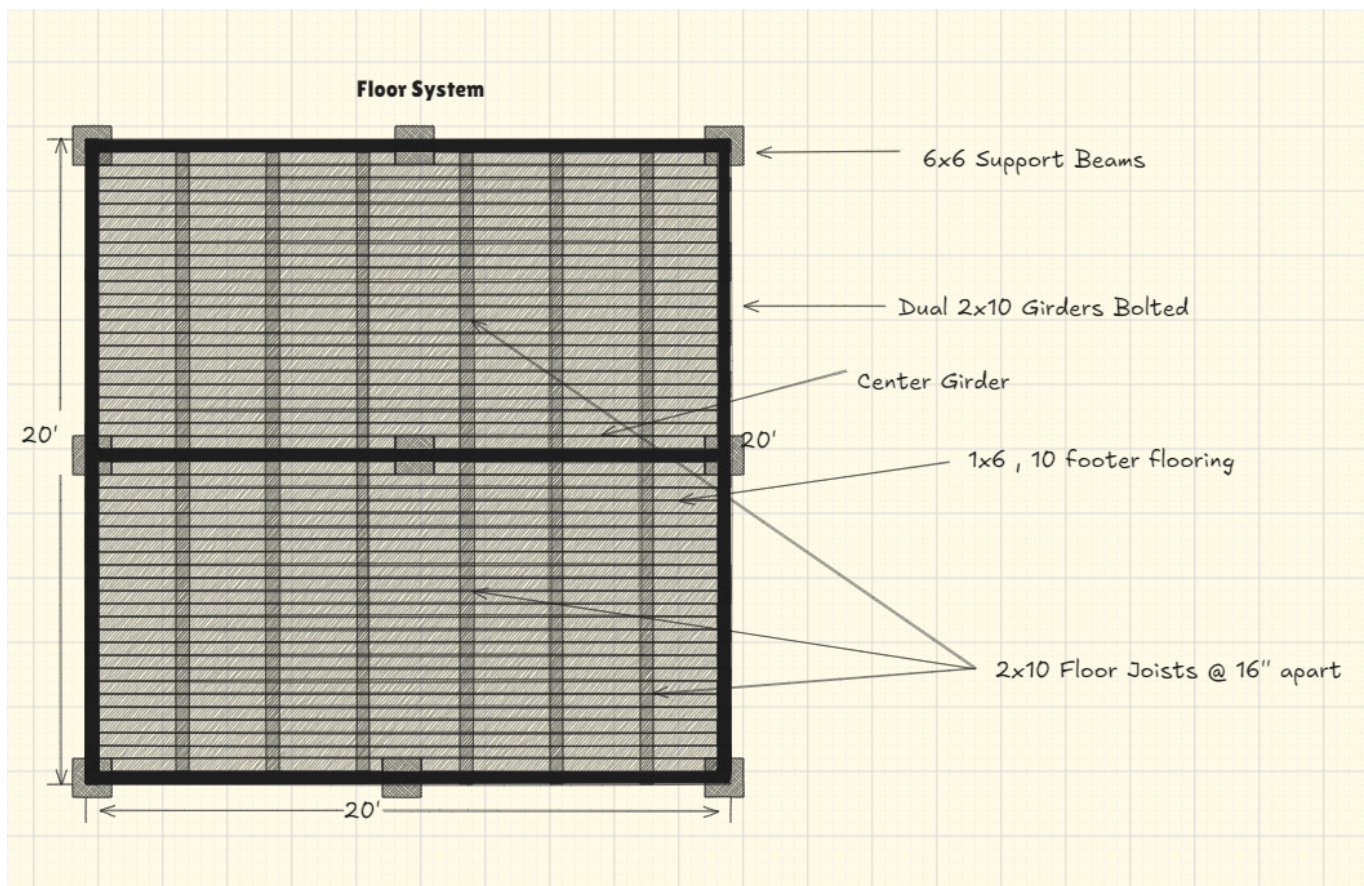


## Girder View



## Deck Floor System

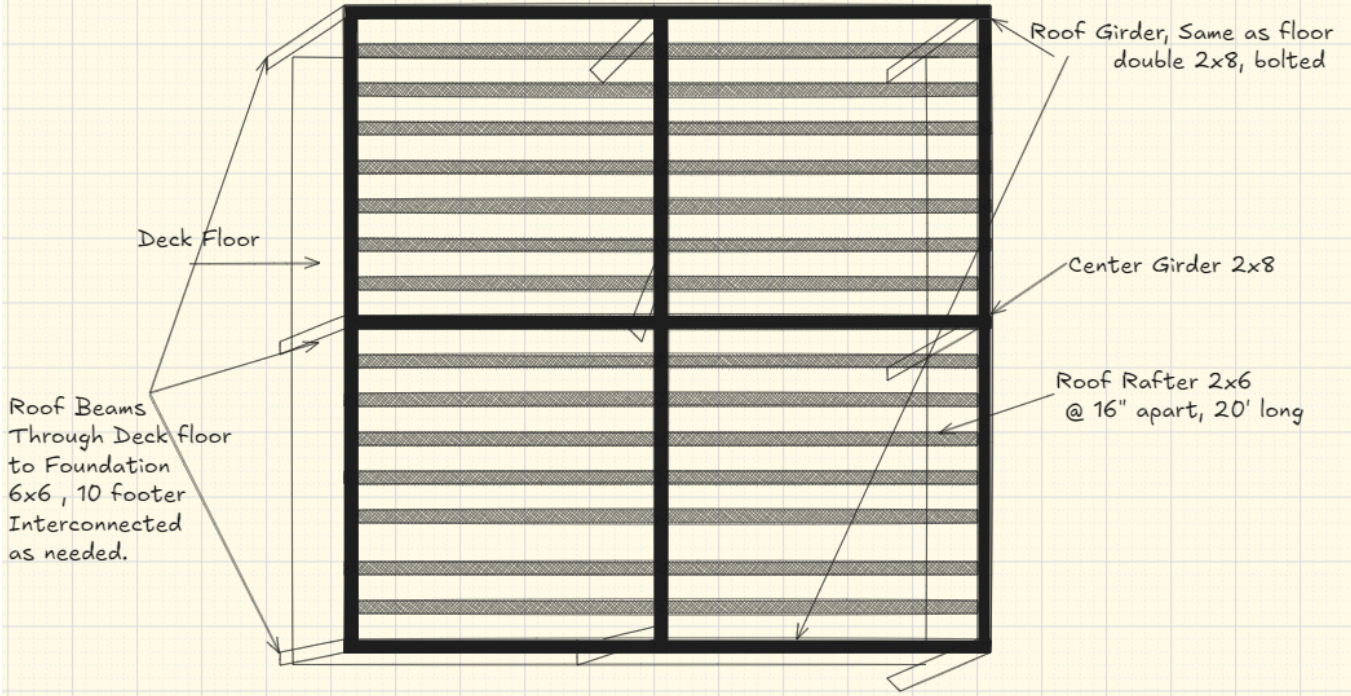
- 2x10 Joists installed @ 16" apart
- Support beams are at 1' , 4' and 6' high because of the slope.
- Screen door at the center , front and back , 30" x 80"
- Total Deck size of 20'x20' where 16' x 20' is screened and 4' balcony at the rear.
- 4x4 posts to support the screen @ 4' apart
- There is a 4'x4' ramp bridge to connect the backyard to the deck.

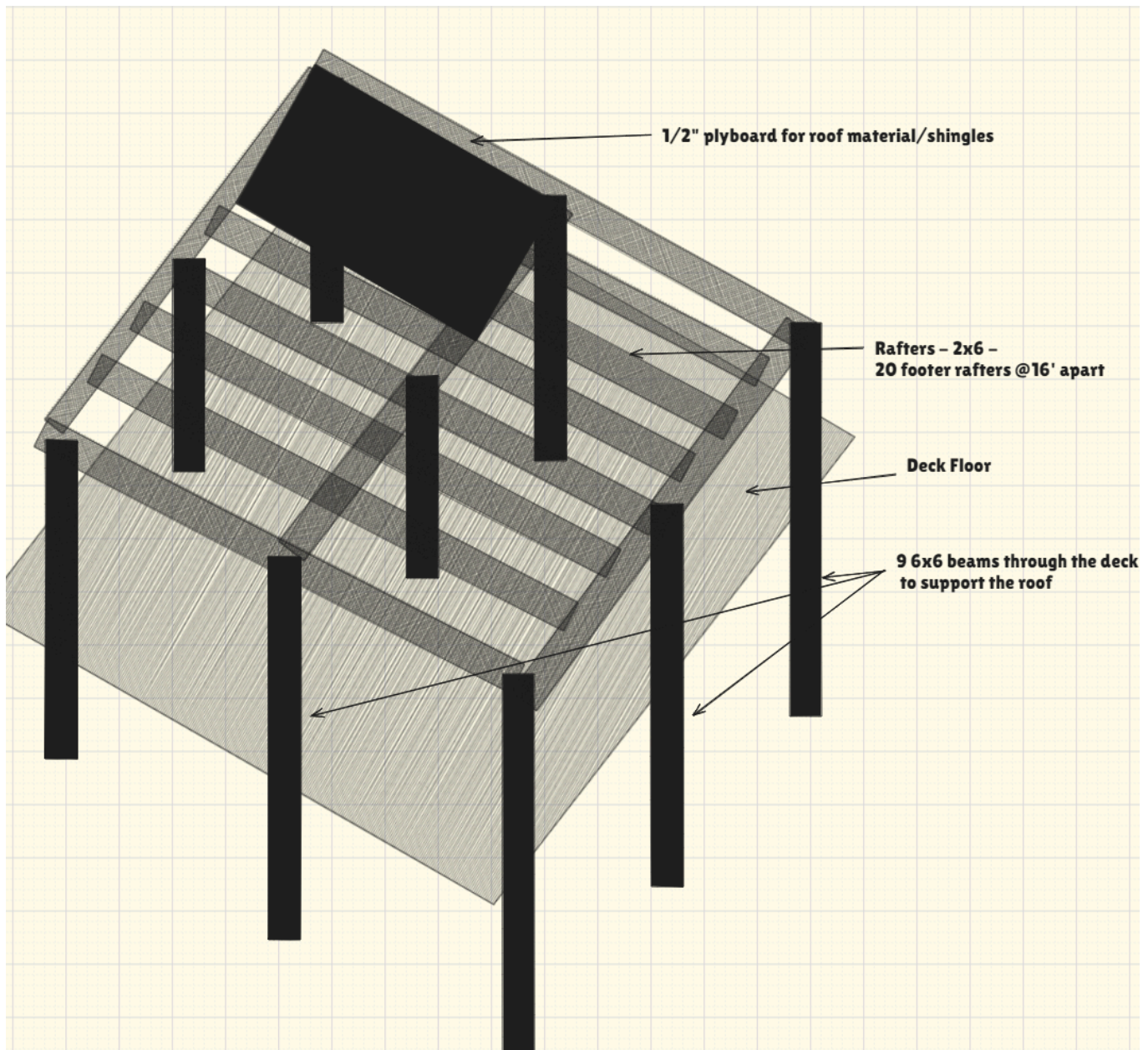


## Deck Roofing

- Support for the roof to be provided by the Foundation beams that span through the deck.
- 2x10 double bolted girder to support the rafters.
- 2x6 , 20 footer Rafter @ 16" apart
- 1/2" plyboard to be used on top of the roof rafter for roof materials.
- Roof Beam locations are displayed in the image below:

### Roof Beams and Rafters

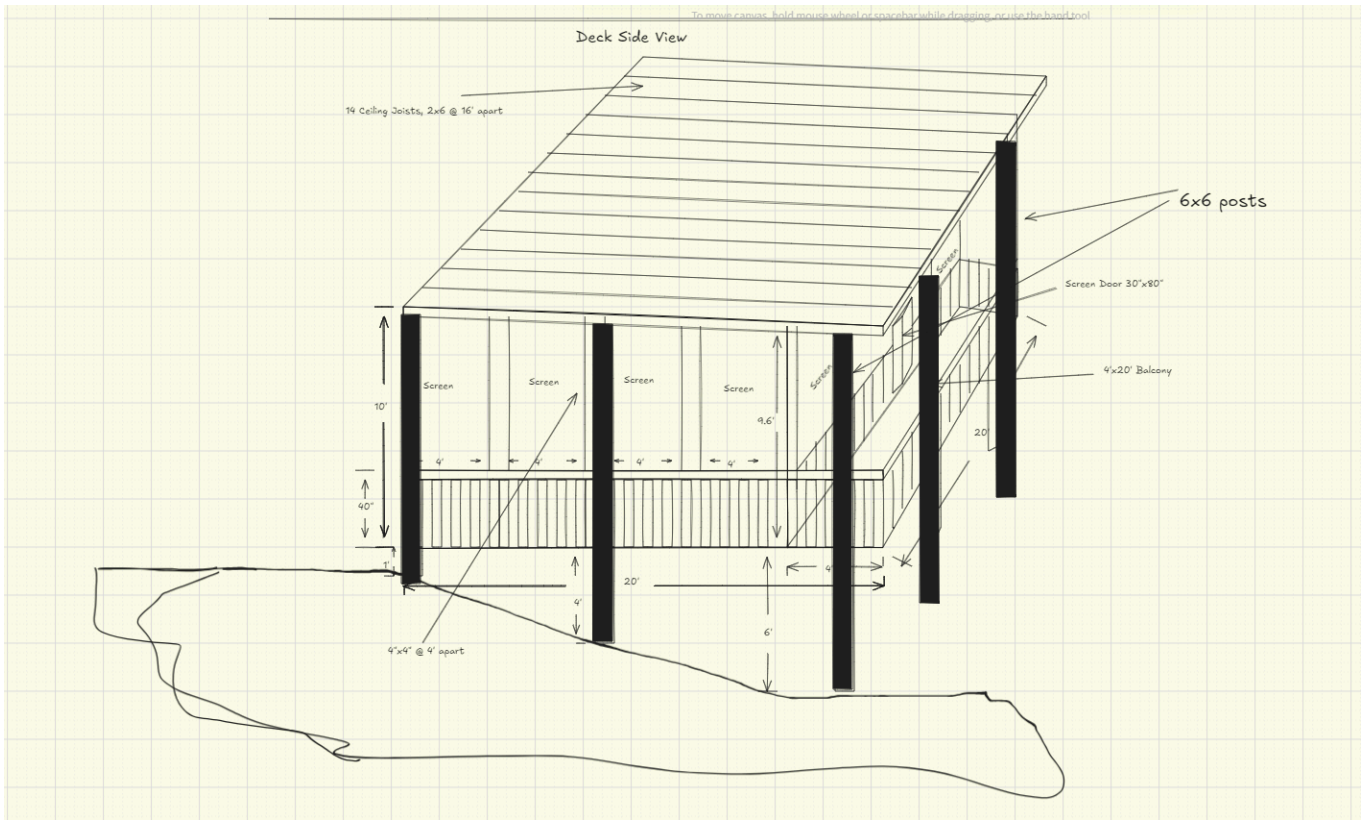




## Deck Railings

- Guard Rails to be 40" with 2x2 posts 5" apart
- Roof slopes from 10' to 9.6'
- Screen door at the center , front and back , 30" x 80"
- Total Deck size of 20'x20' where 16' x 20' is screened and 4' balcony at the rear.
- 4x4 posts to support the screen @ 4' apart
- There is a 4'x4' ramp bridge to connect the backyard to the deck.

## Deck Side View



## Deck Front View

