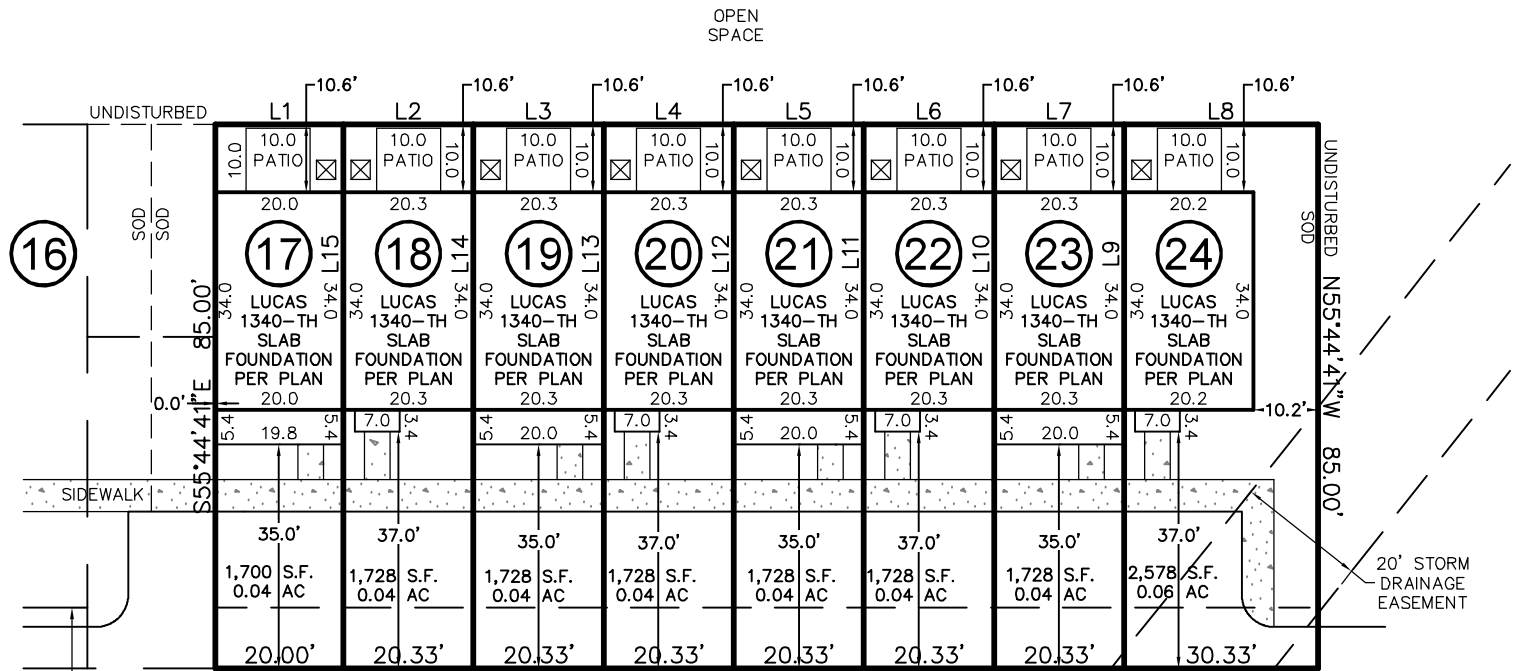
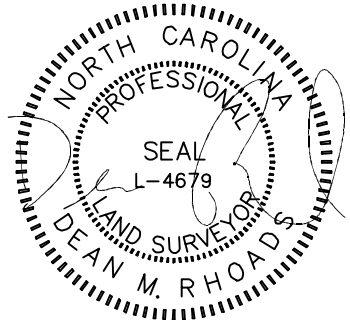
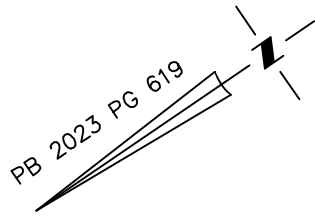


VICINITY MAP

Not To Scale

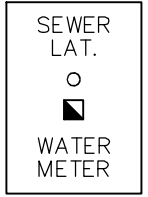
SETBACKS: (PB 2023 PG 618)

- FRONT - 35'
- SIDE - 10'
- REAR - 25'
- CORNER SIDE - 20'



CAMEL CRAZIES PLACE

30' PUBLIC ACCESS & UTILITY EASEMENT

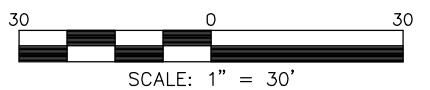


SOD/SEEDING	
TYPE	S.F.
SOD	3,227
SEED & STRAW	0

THIS DRAWING DOES NOT REFLECT AS-BUILT INFORMATION

PRELIMINARY PLAT
NOT FOR RECORDATION, CONVEYANCES, OR SALES.

THIS PROPERTY MAY BE SUBJECT TO ANY AND ALL APPLICABLE DEED RESTRICTIONS, EASEMENTS, RIGHT-OF-WAY, UTILITIES AND RESTRICTIVE COVENANTS WHICH MAY BE OF RECORD OR IMPLIED



RESIDENTIAL LAND SERVICES, PLLC.

1917 Evans Road
Cary, North Carolina 27513
Phone (919) 378-9316
Firm License # P-0873

HOUSE LOCATION PLOT PLAN

FOR
#234, #230, #226, #222, #218, #214, #210, & #206 CAMEL CRAZIES PLACE
LOTS 17-24, BUIES CREEK TOWNHOMES

Neills Creek Township, Harnett County, North Carolina

PROPERTY OF: TRUE HOMES

MAP BOOK 2023 PAGE 618-620 DEED REFERENCE _____

DRAWN: JLS	SURVEYED: N/A	CHECKED: DMR	DATE: SEPTEMBER 16, 2024
------------	---------------	--------------	--------------------------

LINE	BEARING	DISTANCE
L1	S34°15'19"W	20.00'
L2	S34°15'19"W	20.33'
L3	S34°15'19"W	20.33'
L4	S34°15'19"W	20.33'
L5	S34°15'19"W	20.33'
L6	S34°15'19"W	20.33'
L7	S34°15'19"W	20.33'
L8	S34°15'19"W	30.33'
L9	N55°44'41"W	85.00'
L10	N55°44'41"W	85.00'
L11	N55°44'41"W	85.00'
L12	N55°44'41"W	85.00'
L13	N55°44'41"W	85.00'
L14	N55°44'41"W	85.00'
L15	N55°44'41"W	85.00'

IMPERVIOUS SURFACE AREA	
DESCRIPTION	AREA (S.F.)
LOT AREA TO SIDEWALK	11,239
BUILDING w/PORCHES	6,042
DRIVE TO R/W @ 4"	0
DRIVE APRON @ 6"	0
PATIOS	800
4' LEAD WALKS	208
PUBLIC WALK	962
TOTAL PROPOSED	8,012
% IMPERVIOUS AREA	=71.3%