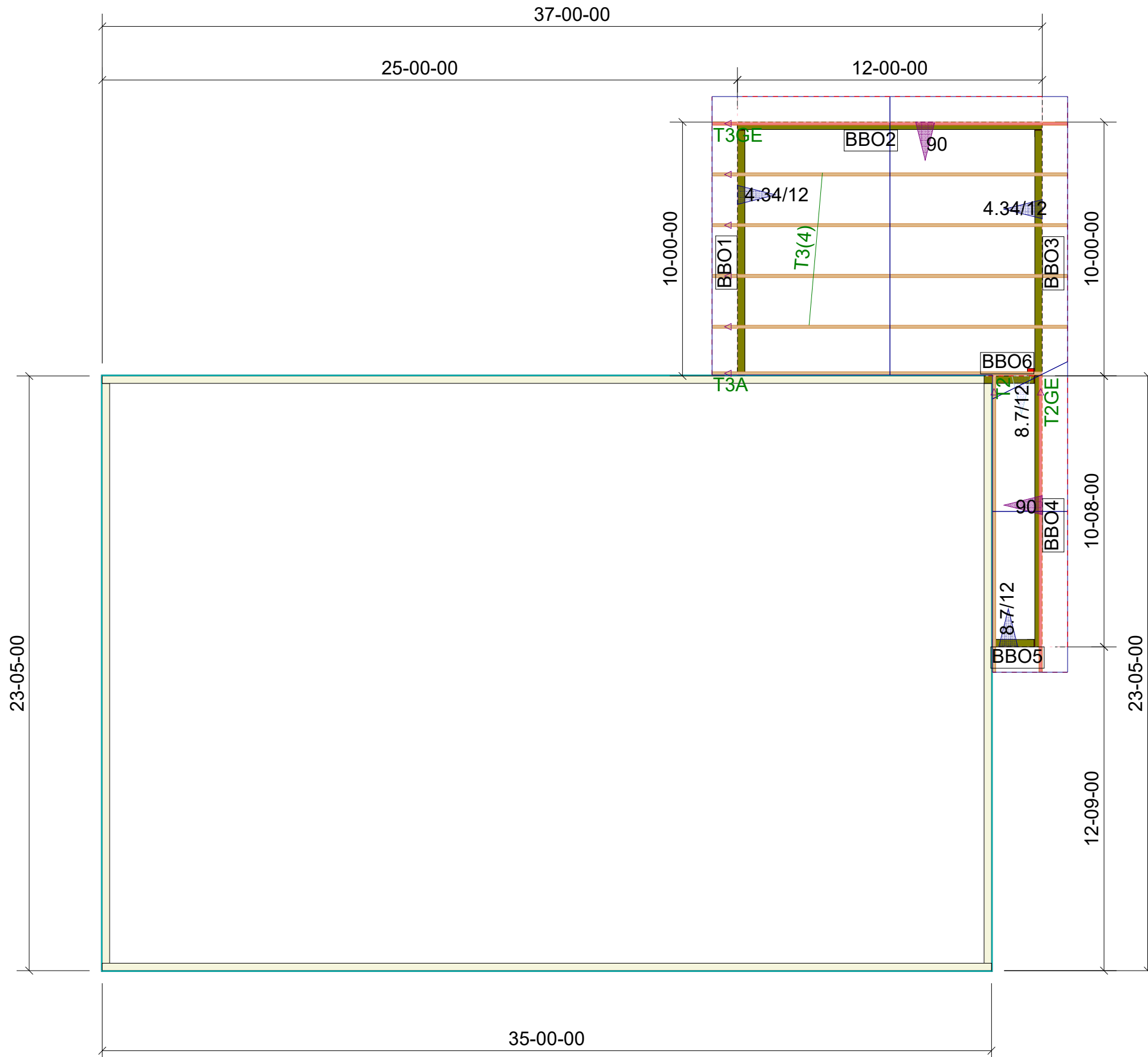


Design based on plans and/or revisions dated :
NA
 Plans and/or revisions received on :
7/30/24

**THIS LAYOUT IS TO BE USED AS A TRUSS PLACEMENT GUIDE ONLY.
 PLEASE REFER TO BUILDING PLANS FOR BUILDING CONSTRUCTION AND DETAILS,
 SUCH AS PLUMBING OR DUCT DROPS.**

**PROPOSED DESIGN-
 NOT FOR
 CONSTRUCTION**



- Notes:
- Exterior dimensions shown are assumed to be:
 Out-to-out of stud
 Out-to-out of sheathing
 Out-to-out of _____
 - Adjust truss locations as needed for plumbing and mechanical clearance. Unless otherwise noted, trusses may be shifted as long as O.C. spacing is not exceeded.
 - Do not cut, drill, or otherwise damage any part of any truss without prior approval from Peak Truss.
 - Do not approve drawings if any information herein is unclear. Once ordered trusses will be fabricated as approved.
 - Please contact Peak Truss Builders with any questions. We are available to help any way we can. We can be reached at 919-545-5555 or sales@peaktruss.com

Roof Truss Loading specified by building designer on Residential jobs

Top Chord Live Load	20.0 lb/ft²
Top Chord Dead Load	10.0 lb/ft²
Bottom Chord Live Load	0.0 lb/ft²
Bottom Chord Dead Load	10.0 lb/ft²

Trusses are designed for additional storage load wherever a 42"x24" box will fit between the webs.

Floor Truss Loading specified by building designer on Residential jobs

Top Chord Live Load	40.0 lb/ft²
Top Chord Dead Load	10.0 lb/ft²
Bottom Chord Live Load	0.0 lb/ft²
Bottom Chord Dead Load	5.0 lb/ft²

Floor Live Load deflection limit L/480
 Roof Live Load deflection limit L/240

This layout has been designed using the IRC2015 building code.

Model created using a wind speed of 115 mph specified for Hamett County.

- △ - This symbol denotes left end of truss as shown on truss drawings
- - Approximate location of toilet drop. Builder please confirm.

Truss connections by others:

- Ⓝ - Nailed
- Ⓛ - Ledger

Overhang: 12"
 Depth: NA
 Spacing: 2' OC

Wall Types

	Load Bearing
	Non Load Bearing

Job #

Q-2401843

Cotton
 300 Grameta Ln
 Lillington NC

UNIT / Lot:

Layout Creation Date:

8/9/2024

Sales: Le Greene - Designs: Austin Greene

PHC Restoration
 1601 E McNeill St
 Lillington, NC
 27546

**Peak Truss
 Builders, LLC**



PO Box 340, New Hill, NC 27562

Design based on plans and/or revisions dated :
NA
 Plans and/or revisions received on :
7/30/24

**THIS LAYOUT IS TO BE USED AS A TRUSS PLACEMENT GUIDE ONLY.
 PLEASE REFER TO BUILDING PLANS FOR BUILDING CONSTRUCTION AND DETAILS,
 SUCH AS PLUMBING OR DUCT DROPS.**

**PROPOSED DESIGN-
 NOT FOR
 CONSTRUCTION**

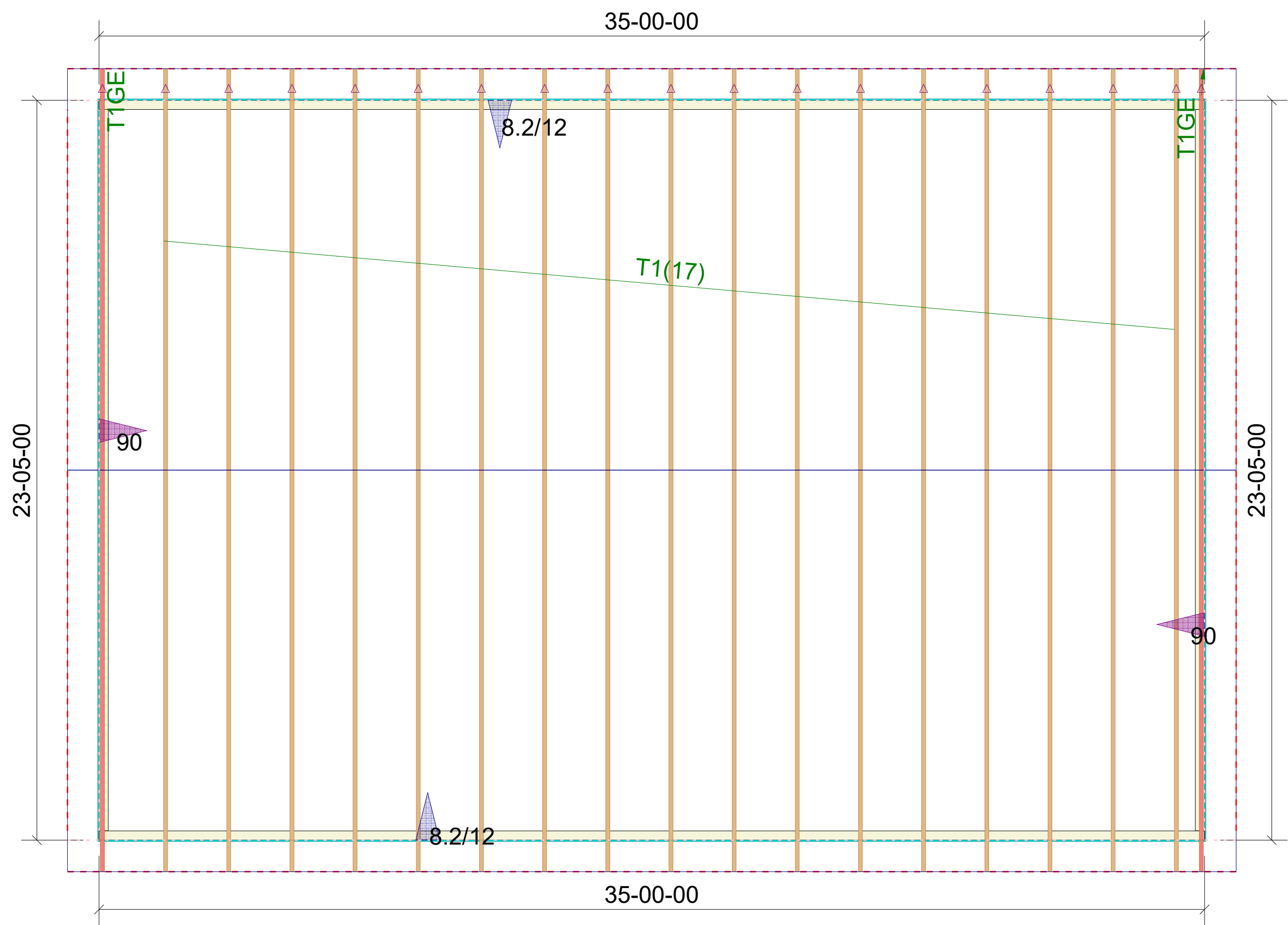
Job #
Q-2401843

Cotton
 300 Grameta Ln
 Lillington NC
 UNIT / Lot:

Layout Creation Date:
8/9/2024
 Sales: Le Greene - Designs: Austin Greene

PHC Restoration
 1601 E McNeill St
 Lillington, NC
 27546

**Peak Truss
 Builders, LLC**
 PO Box 340, New Hill, NC 27562



Notes:
 1. Exterior dimensions shown are assumed to be:
 Out-to-out of stud
 Out-to-out of sheathing
 Out-to-out of _____
 2. Adjust truss locations as needed for plumbing and mechanical clearance. Unless otherwise noted, trusses may be shifted as long as O.C. spacing shown is not exceeded.
 3. Do not cut, drill, or otherwise damage any part of any truss without prior approval from Peak Truss.
 4. Do not approve drawings if any information herein is unclear. Once ordered trusses will be fabricated as approved.
 5. Please contact Peak Truss Builders with any questions. We are available to help any way we can. We can be reached at 919-545-5555 or sales@peaktruss.com

Roof Truss Loading specified by building designer on Residential jobs
 Top Chord Live Load 20.0 lb/ft²
 Top Chord Dead Load 10.0 lb/ft²
 Bottom Chord Live Load 0.0 lb/ft²
 Bottom Chord Dead Load 10.0 lb/ft²

Trusses are designed for additional storage load wherever a 42"x24" box will fit between the webs.

Floor Truss Loading specified by building designer on Residential jobs
 Top Chord Live Load 40.0 lb/ft²
 Top Chord Dead Load 10.0 lb/ft²
 Bottom Chord Live Load 0.0 lb/ft²
 Bottom Chord Dead Load 5.0 lb/ft²

Floor Live Load deflection limit L/480
 Roof Live Load deflection limit L/240

This layout has been designed using the IRC2015 building code.

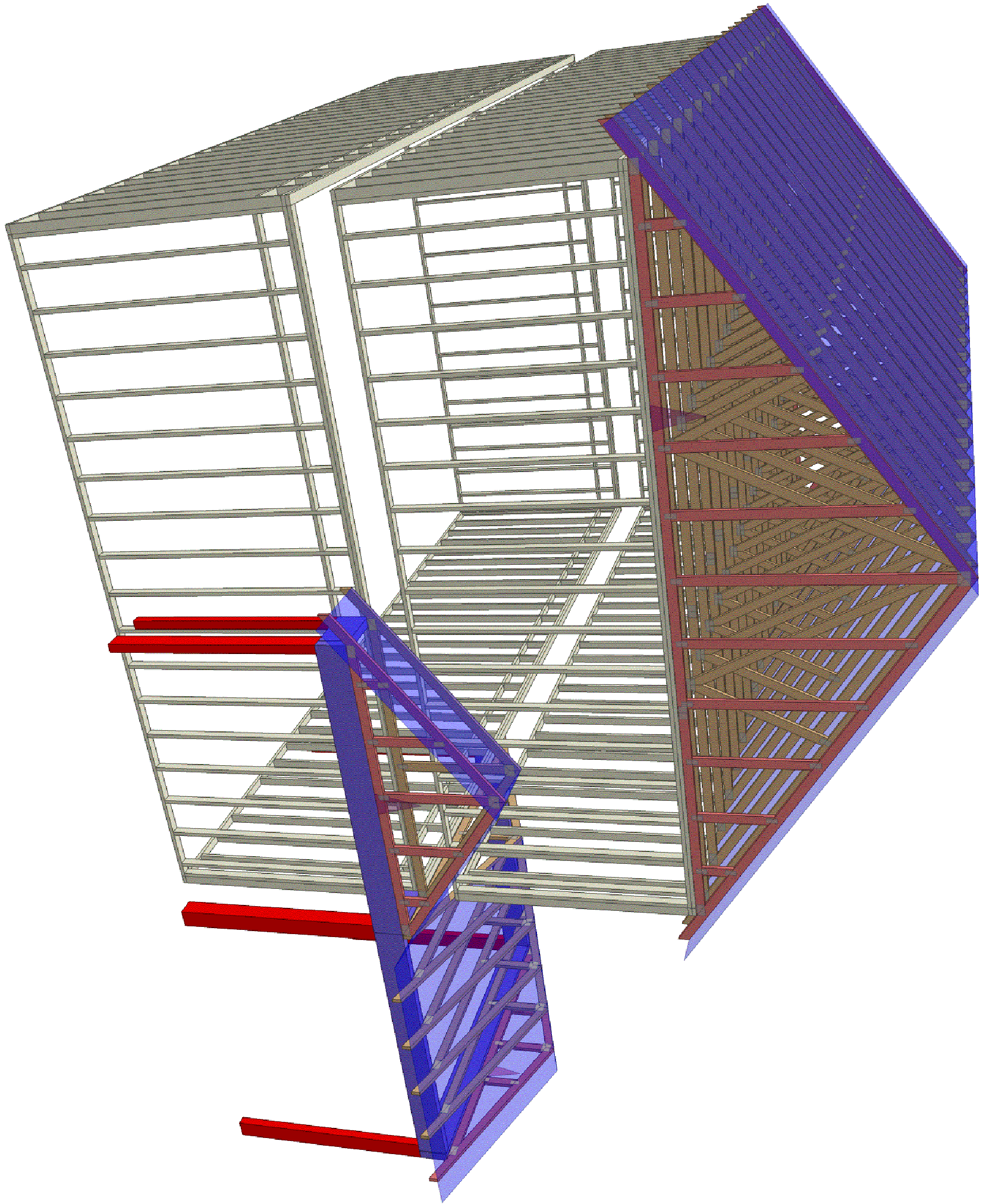
Model created using a wind speed of 115 mph specified for Hamett County.

- △ - This symbol denotes left end of truss as shown on truss drawings
- - Approximate location of toilet drop. Builder please confirm.

Truss connections by others:
 (N) -Nailed
 (L) -Ledger

Overhang: 12"
 Depth: NA
 Spacing: 2' OC

Wall Types	
	Load Bearing
	Non Load Bearing



**Peak Truss
Builders, LLC**

PO Box 340, New Hill, NC 27562

PHC Restoration
1601 E McNeill St
Lillington, NC
27546

Layout Creation Date:

8/9/2024

Sales: Le Greene - Designer: Austin Greene

Cotton
300 Grameta Ln
Lillington NC

Unit/Lot:

Job #

Q-2401843