

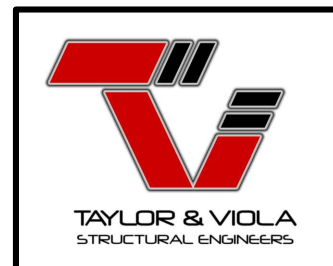
ENCLOSED GABLE END BUILDING

0'-30' (MAX.) WIDE X 16'-0" EAVE HEIGHT WITH BOX FRAME / (UP TO) 145 M.P.H. WIND ZONE - 30 P.S.F. SNOW LOAD

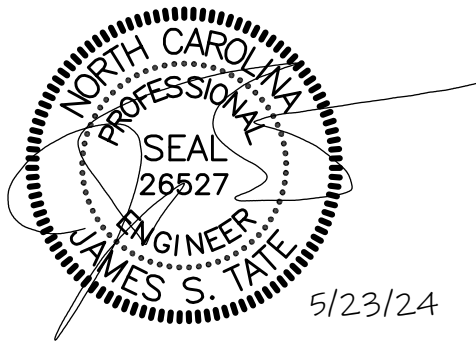
FOR:

SELECT STEEL BUILDINGS, INC.
2745 STATESVILLE RD.
WILKESBORO, NORTH CAROLINA
TELE: 336-973-0721

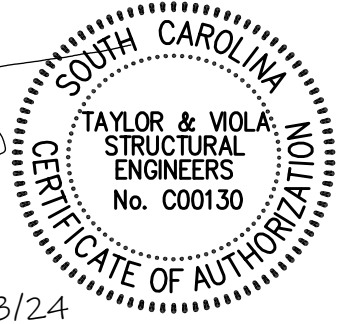
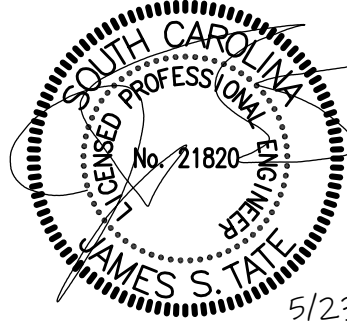
ISSUE DATE: 05.23.24



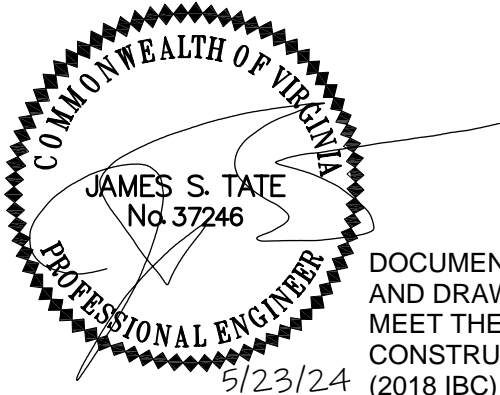
NOTE: THESE DRAWINGS ARE VALID FOR (1) CALENDER YEAR AFTER THE ISSUE DATE LISTED ON THIS SHEET.



DOCUMENTS DESIGNED AND DRAWN TO MEET THE 2018 NC BUILDING CODE (2015 IBC)



DOCUMENTS DESIGNED AND DRAWN TO MEET THE 2021 SC BUILDING CODE (2021 IBC)



DOCUMENTS DESIGNED AND DRAWN TO MEET THE 2018 VA CONSTRUCTION CODE (2018 IBC)



DOCUMENTS DESIGNED AND DRAWN TO MEET THE 2012 IBC



DOCUMENTS DESIGNED AND DRAWN TO MEET THE 2018 IBC



TAYLOR & VIOLA
STRUCTURAL ENGINEERS
P.O.B. 2616 HICKORY NORTH CAROLINA
TELE: 828-328-6331 FAX: 828-322-1801
WWW.TAYLORVIOLA.COM

JCMT Associates, PLLC
211 Stone Drive, Pilot Mountain, NC 27041
Telephone: (336) 399-6277

VI.0

SELECT STEEL
BUILDINGS, INC.

2745 STATESVILLE RD.
WILKESBORO, NORTH CAROLINA 28697
TELE: 366-973-0721

DRAWN BY:
BKS

PROJECT NO:
24-511

DATE:
05.23.24

SHEET NO:
S1

NOTE: THESE DRAWINGS ARE VALID FOR (1) CALENDER YEAR AFTER THE ISSUE DATE LISTED ON THIS SHEET.

SHEET INDEX

SHEET NUMBER	SHEET TITLE
S0	SEALED COVER SHEET
S1	P.E. SEALS SHEET
S1A	P.E. SEALS SHEET
S1B	P.E. SEALS SHEET
S2	DRAWING INDEX
S3	GENERAL NOTES AND SPECIFICATIONS
S4	SIDE AND END ELEVATIONS
S5	TYPICAL RAFTER / COLUMN FRAME SECTIONS (<16'H / >21' TO <24'W)
S5A	TYPICAL RAFTER / COLUMN FRAME SECTIONS (<16'H / >25' TO <30'W)
S5B	TYPICAL FRAME SECTIONS
S6	BOX EAVE / SINGLE COLUMN SECTION (<14'H)
S6A	BOX EAVE / DOUBLE COLUMN SECTION (<16'H)
S7	BASE RAIL ANCHORGE / SINGLE COLUMN
S7A	BASE RAIL ANCHORGE / SINGLE COLUMN (NO SLAB)
S7B	BASE RAIL ANCHORGE / SINGLE COLUMN (NO SIDING SHELF)
S7C	BASE RAIL ANCHORGE / SINGLE COLUMN (NO SLAB / NO SIDING SHELF)
S7D	BASE RAIL ANCHORGE / SINGLE COLUMN (CLIP ANGLE ATTACHMENT OPTION)
S7E	BASE RAIL ANCHORGE / DOUBLE COLUMN
S7F	BASE RAIL ANCHORGE / DOUBLE COLUMN (NO SLAB)
S7G	BASE RAIL ANCHORGE / DOUBLE COLUMN (NO SIDING SHELF)
S7H	BASE RAIL ANCHORGE / DOUBLE COLUMN (NO SLAB / NO SIDING SHELF)

SHEET NUMBER	SHEET TITLE
S8	(SOIL) BASE RAIL ANCHORAGE
S8A	(ASPHALT) BASE RAIL ANCHORAGE
S9	TYPICAL BOX EAVE / END WALL FRAMING AND OPENINGS
S9A	TYPICAL BOX EAVE / SIDE WALL FRAMING AND OPENINGS
S10	CONNECTION DETAILS
S11	CONNECTION DETAILS
S12	CONNECTION DETAILS
S13	CONNECTION DETAILS
S14	BOX EAVE RAFTER / SINGLE & DOUBLE RAFTER LEAN-TO OPTIONS
S14A	BOX EAVE / LACED RAFTER LEAN-TO OPTIONS
S14B	LEAN-TO HIP OPTIONS
S15	LEAN-TO CONNECTION DETAILS / SINGLE COLUMN
S15A	LEAN-TO CONNECTION DETAILS / DOUBLE COLUMN
S15B	LEAN-TO CONNECTION DETAILS / SINGLE COLUMN / LACED RAFTER
S15C	LEAN-TO CONNECTION DETAILS / DOUBLE COLUMN / LACED RAFTER
S15D	LEAN-TO / MAIN FRAME CONNECTION DETAILS
S15E	LEAN-TO / MAIN FRAME / LACED RAFTER CONNECTION DETAIL
S15F	LEAN-TO / MAIN FRAME CONNECTION DETAILS
S15G	LEAN-TO / MAIN FRAME / LACED RAFTER CONNECTION DETAIL (FLUSH)
S15H	END WALL COLUMN / HIP RAFTER CONNECTION DETAIL
S16	VERTICAL ROOF / SIDING OPTION
S16A	VERTICAL ROOF / SIDING OPTION
S16B	VERTICAL ROOF / SIDING OPTION
S17	SIDE WALL HEADER OPTIONS
S17A	END WALL HEADER OPTIONS



TAYLOR & VIOLA
STRUCTURAL ENGINEERS
P.O.B. 2616 HICKORY NORTH CAROLINA
TELE: 828-328-6331 FAX: 828-322-1801
WWW.TAYLORVIOLA.COM

JCMT Associates, PLLC
211 Stone Drive, Pilot Mountain, NC 27041
Telephone: (336) 399-6277

VI.0

SELECT STEEL
BUILDINGS, INC.

2745 STATESVILLE RD.
WILKESBORO, NORTH CAROLINA 28697
TELE: 366-973-0721

DRAWN BY:
BKS

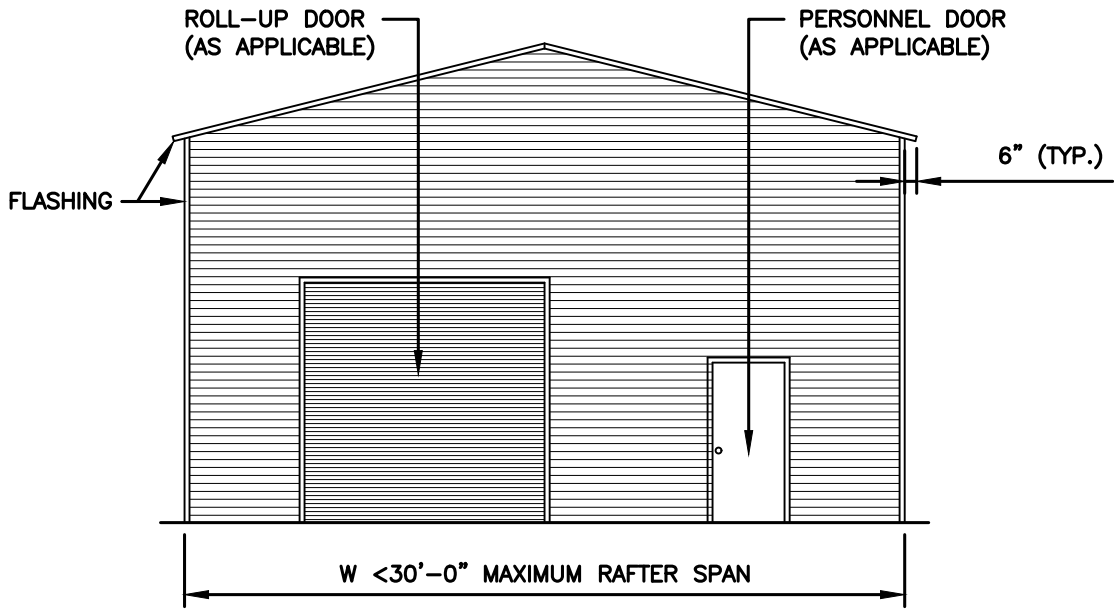
PROJECT NO:
24-511

DATE:
05.23.24

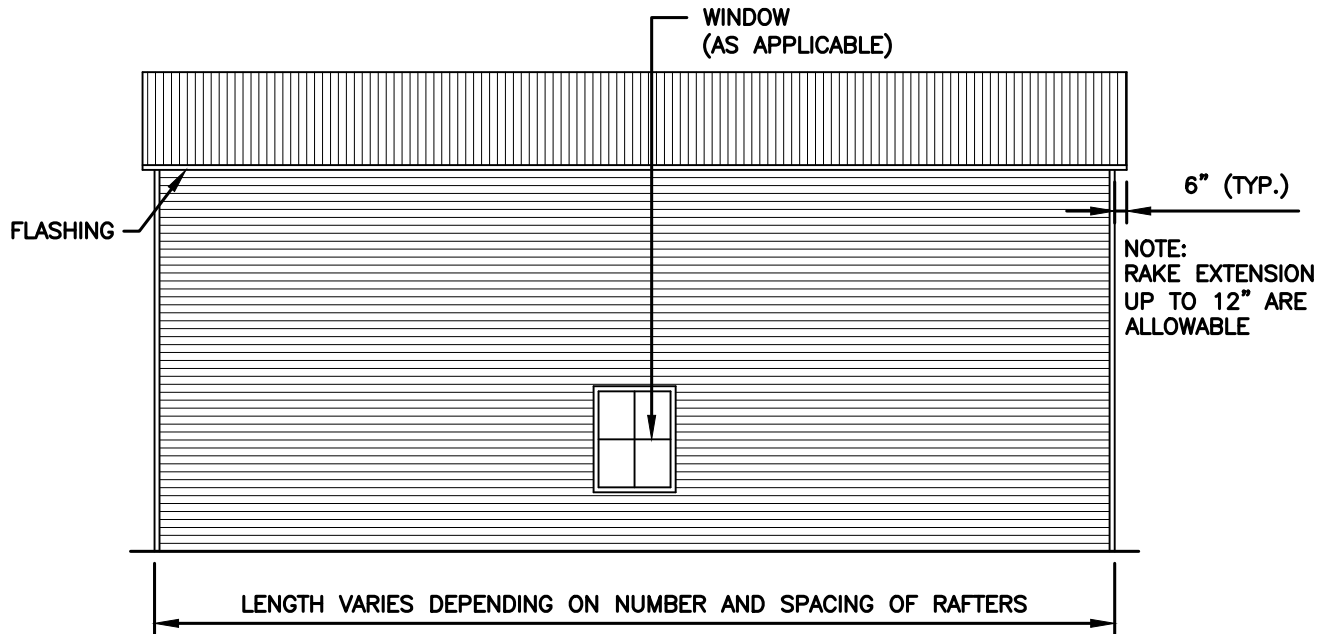
SHEET NO:
S2

NOTE: THESE DRAWINGS ARE VALID FOR (1) CALENDER YEAR AFTER THE ISSUE DATE LISTED ON THIS SHEET.

BOX EVE FRAME RAFTER STURCTURE



TYPICAL END ELEVATION



TYPICAL SIDE ELEVATION



TAYLOR & VIOLA
 STRUCTURAL ENGINEERS
 P.O.B. 2616 HICKORY NORTH CAROLINA
 TELE: 828-328-6331 FAX: 828-322-1801
 WWW.TAYLORVIOLA.COM

JCMT Associates, PLLC
 211 Stone Drive, Pilot Mountain, NC 27041
 Telephone: (336) 399-6277

VI.0

SELECT STEEL
 BUILDINGS, INC.

2745 STATESVILLE RD.
 WILKESBORO, NORTH CAROLINA 28697
 TELE: 366-973-0721

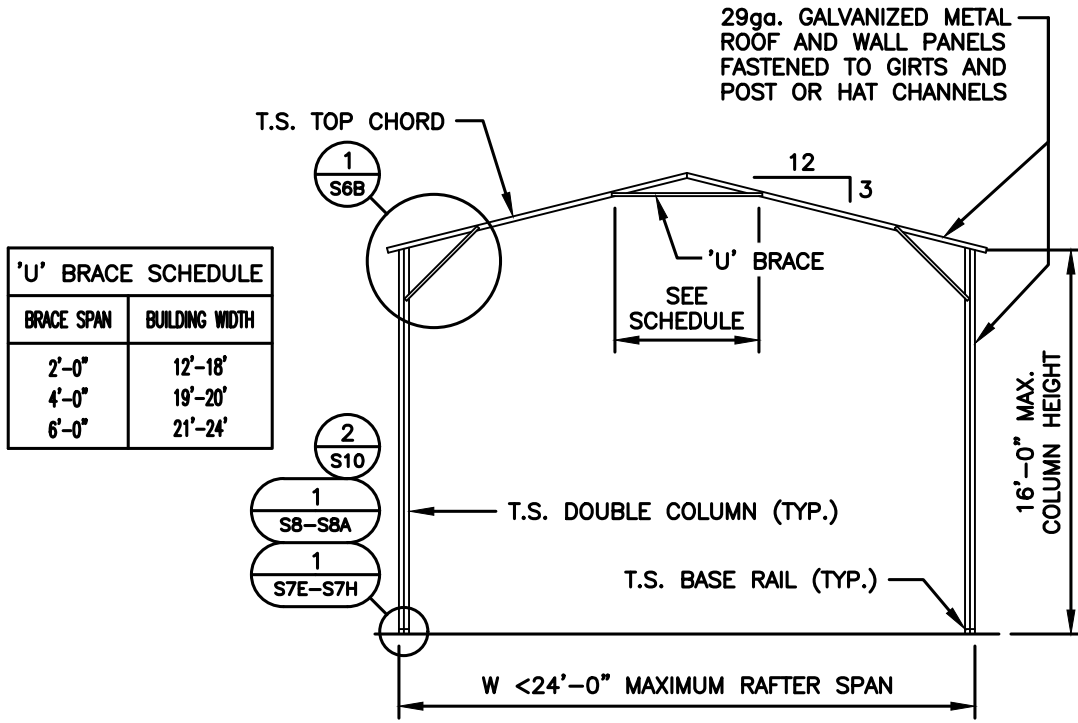
DRAWN BY:
 BKS

DATE:
 05.23.24

PROJECT NO:
 24-511

SHEET NO:
S4

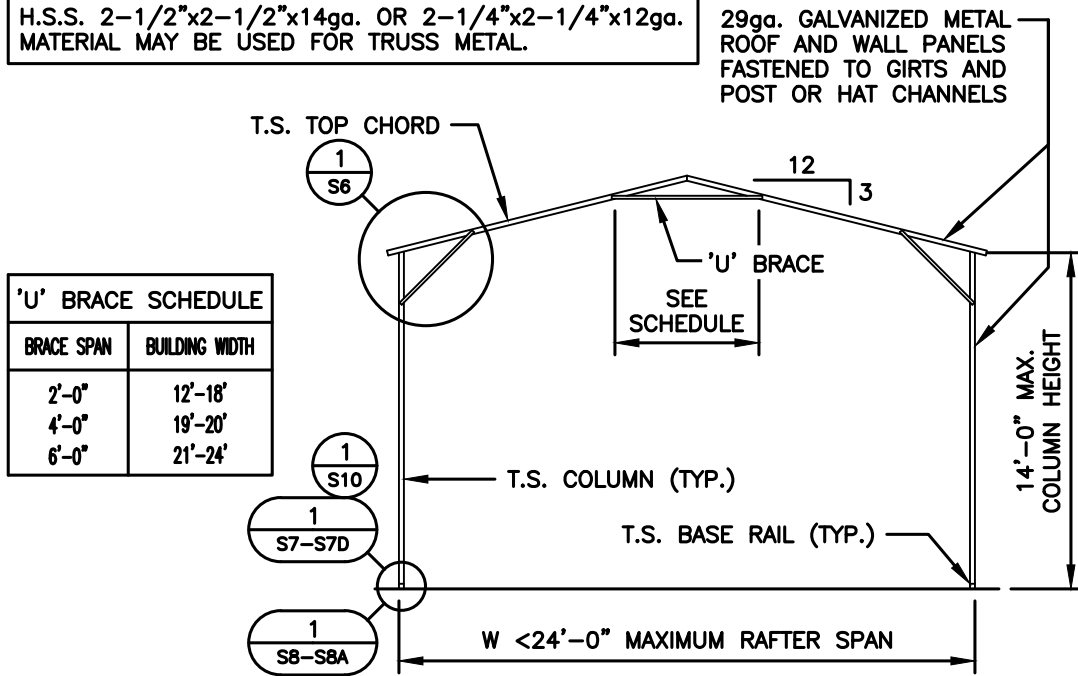
(<24' WIDE / <16' HIGH) BOX EVE RAFTER END WALL SECTIONS



'U' BRACE SCHEDULE	
BRACE SPAN	BUILDING WIDTH
2'-0"	12'-18'
4'-0"	19'-20'
6'-0"	21'-24'

TYPICAL RAFTER / COLUMN FRAME SECTION

NOTE:
H.S.S. 2-1/2"x2-1/2"x14ga. OR 2-1/4"x2-1/4"x12ga.
MATERIAL MAY BE USED FOR TRUSS METAL.



'U' BRACE SCHEDULE	
BRACE SPAN	BUILDING WIDTH
2'-0"	12'-18'
4'-0"	19'-20'
6'-0"	21'-24'

TYPICAL RAFTER / COLUMN FRAME SECTION

TAYLOR & VIOLA
STRUCTURAL ENGINEERS
P.O.B. 2616 HICKORY NORTH CAROLINA
TELE: 828-328-6331 FAX: 828-322-1801
WWW.TAYLORVIOLA.COM

JCMT Associates, PLLC
211 Stone Drive, Pilot Mountain, NC 27041
Telephone: (336) 399-6277

**SELECT STEEL
BUILDINGS, INC.**

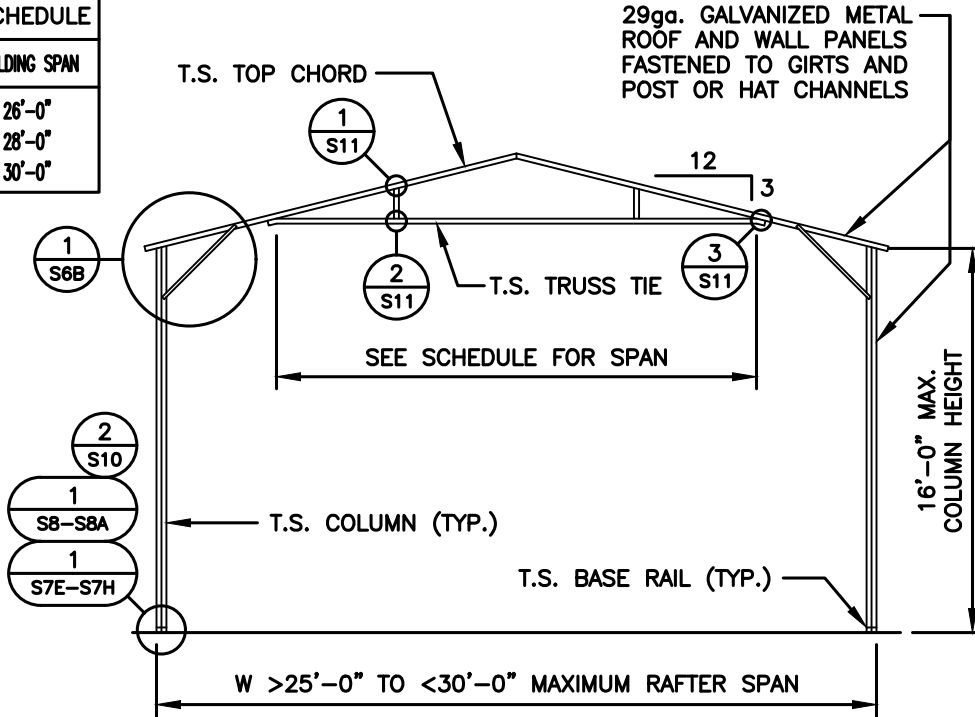
2745 STATESVILLE RD.
WILKESBORO, NORTH CAROLINA 28697
TELE: 366-973-0721

DRAWN BY: BKS	PROJECT NO: 24-511
DATE: 05.23.24	SHEET NO: S5

NOTE: THESE DRAWINGS ARE VALID FOR (1) CALENDER YEAR AFTER THE ISSUE DATE LISTED ON THIS SHEET.

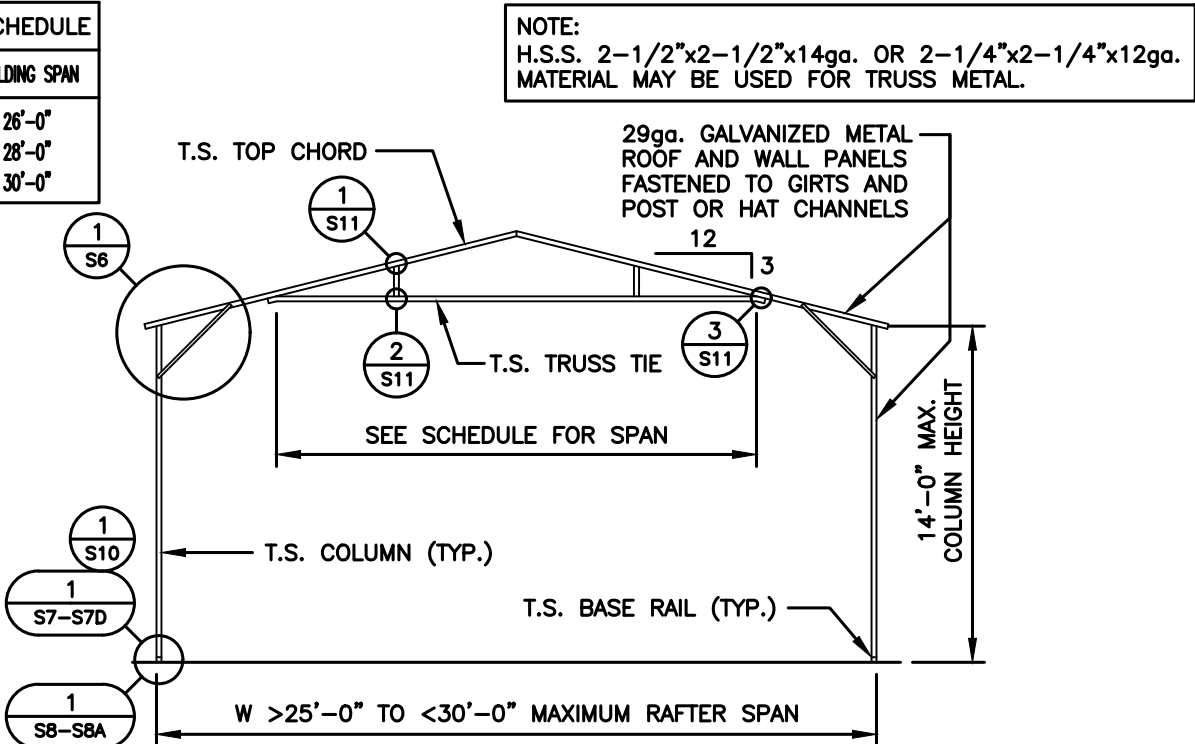
(>25' - <30' WIDE / <16' HIGH) BOX EVE RAFTER END WALL SECTIONS

TRUSS TIE SCHEDULE	
BRACE SPAN	BUILDING SPAN
16'-0"	26'-0"
18'-0"	28'-0"
20'-0"	30'-0"



TYPICAL RAFTER / COLUMN FRAME SECTION

TRUSS TIE SCHEDULE	
BRACE SPAN	BUILDING SPAN
16'-0"	26'-0"
18'-0"	28'-0"
20'-0"	30'-0"



TYPICAL RAFTER / COLUMN FRAME SECTION



TAYLOR & VIOLA
STRUCTURAL ENGINEERS
P.O.B. 2616 HICKORY NORTH CAROLINA
TELE: 828-328-6331 FAX: 828-322-1801
WWW.TAYLORVIOLA.COM

JCMT Associates, PLLC
211 Stone Drive, Pilot Mountain, NC 27041
Telephone: (336) 399-6277

VI.0

SELECT STEEL
BUILDINGS, INC.

2745 STATESVILLE RD.
WILKESBORO, NORTH CAROLINA 28697
TELE: 366-973-0721

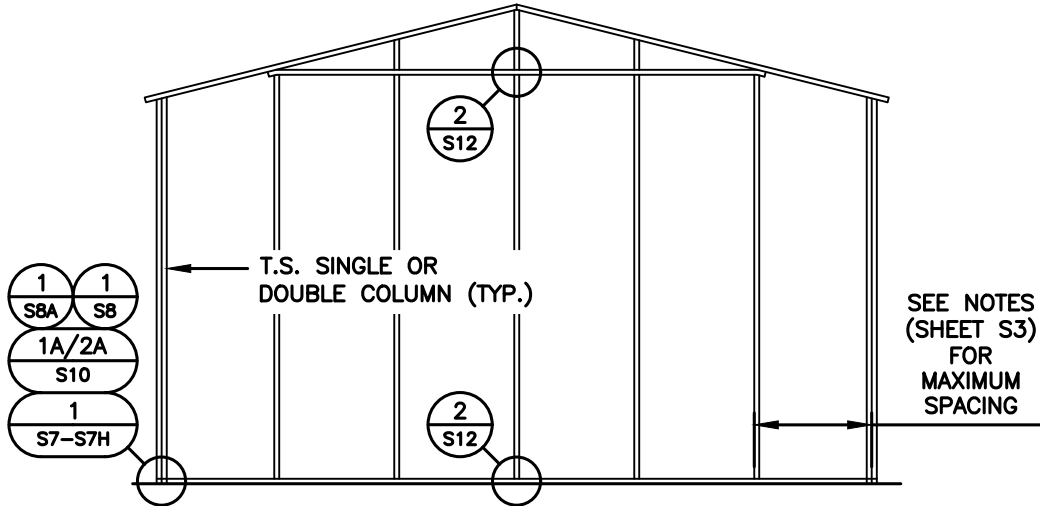
DRAWN BY:
BKS

PROJECT NO:
24-511

DATE:
05.23.24

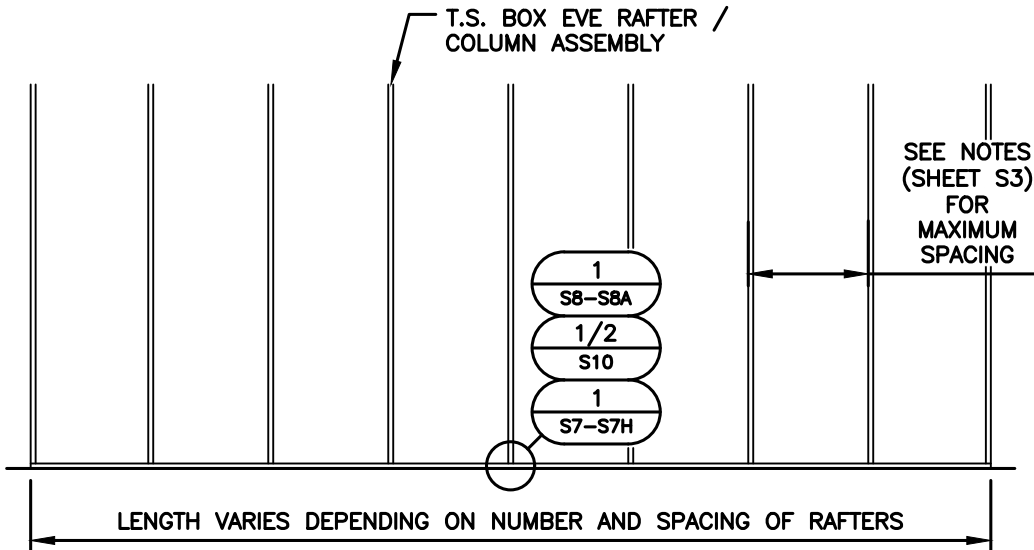
SHEET NO:
S5A

(TYPICAL) SIDE FRAME SECTION



TYPICAL BOX EVE RAFTER / END WALL COLUMN FRAME SECTION

NOTE:
H.S.S. 2-1/2"x2-1/2"x14ga. OR 2-1/4"x2-1/4"x12ga.
MATERIAL MAY BE USED FOR TRUSS METAL.



TYPICAL RAFTER / COLUMN SIDE FRAME SECTION <16'-0"



TAYLOR & VIOLA
STRUCTURAL ENGINEERS
P.O.B. 2616 HICKORY NORTH CAROLINA
TELE: 828-328-6331 FAX: 828-322-1801
WWW.TAYLORVIOLA.COM

JCMT Associates, PLLC
211 Stone Drive, Pilot Mountain, NC 27041
Telephone: (336) 399-6277

VI.0

SELECT STEEL
BUILDINGS, INC.

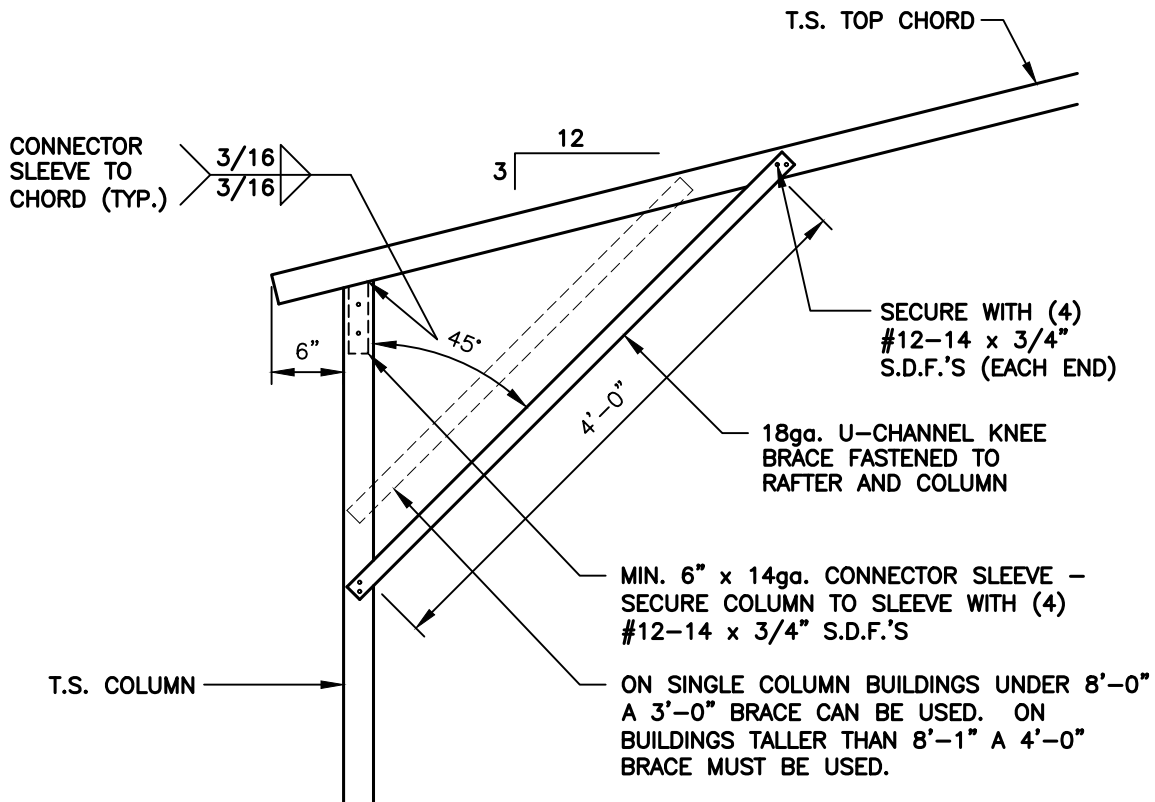
2745 STATESVILLE RD.
WILKESBORO, NORTH CAROLINA 28697
TELE: 366-973-0721

DRAWN BY:
BKS

DATE:
05.23.24

PROJECT NO:
24-511

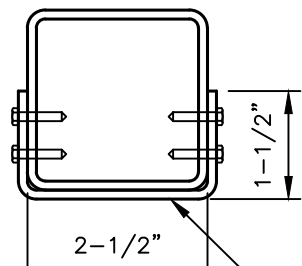
SHEET NO:
S5B



BOX EAVE / CORNER POST CONNECTION DETAIL
FOR HEIGHTS <14'-0"

1
S6

SCALE: 3/4" = 1'-0"



BRACE SECTION

18ga. U-CHANNEL BRACE FASTENED TO THE COLUMN AND CHORD, WITH #12-14 x 3/4" S.D.F.'S AT EACH END AS SHOWN IN ELEVATION.



TAYLOR & VIOLA
STRUCTURAL ENGINEERS
P.O.B. 2616 HICKORY NORTH CAROLINA
TELE: 828-328-6331 FAX: 828-322-1801
WWW.TAYLORVIOLA.COM

JCMT Associates, PLLC
211 Stone Drive, Pilot Mountain, NC 27041
Telephone: (336) 399-6277

VI.0

SELECT STEEL
BUILDINGS, INC.

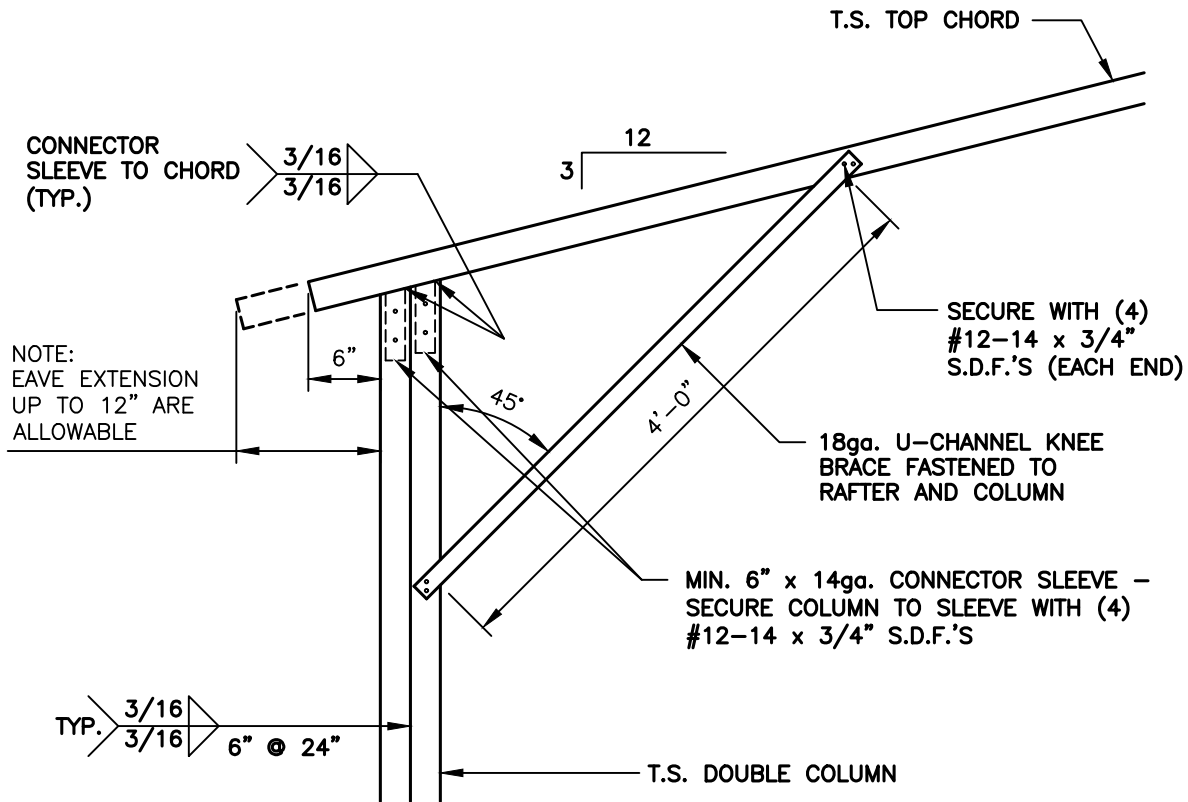
2745 STATESVILLE RD.
WILKESBORO, NORTH CAROLINA 28697
TELE: 366-973-0721

DRAWN BY:
BKS

PROJECT NO:
24-511

DATE:
05.23.24

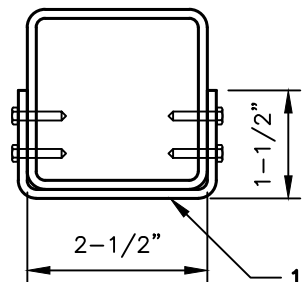
SHEET NO:
S6



**BOX EAVE / CORNER POST CONNECTION DETAIL
FOR HEIGHTS >14'-1" TO <16'-0"**

1
S6A

SCALE: 3/4" = 1'-0"



BRACE SECTION

18ga. U-CHANNEL BRACE FASTENED TO THE COLUMN AND CHORD, WITH #12-14 x 3/4" S.D.F.'S AT EACH END AS SHOWN IN ELEVATION.



TAYLOR & VIOLA
STRUCTURAL ENGINEERS
P.O.B. 2616 HICKORY NORTH CAROLINA
TELE: 828-328-6331 FAX: 828-322-1801
WWW.TAYLORVIOLA.COM

JCMT Associates, PLLC
211 Stone Drive, Pilot Mountain, NC 27041
Telephone: (336) 399-6277

VI.0

SELECT STEEL
BUILDINGS, INC.

2745 STATESVILLE RD.
WILKESBORO, NORTH CAROLINA 28697
TELE: 366-973-0721

DRAWN BY:
BKS

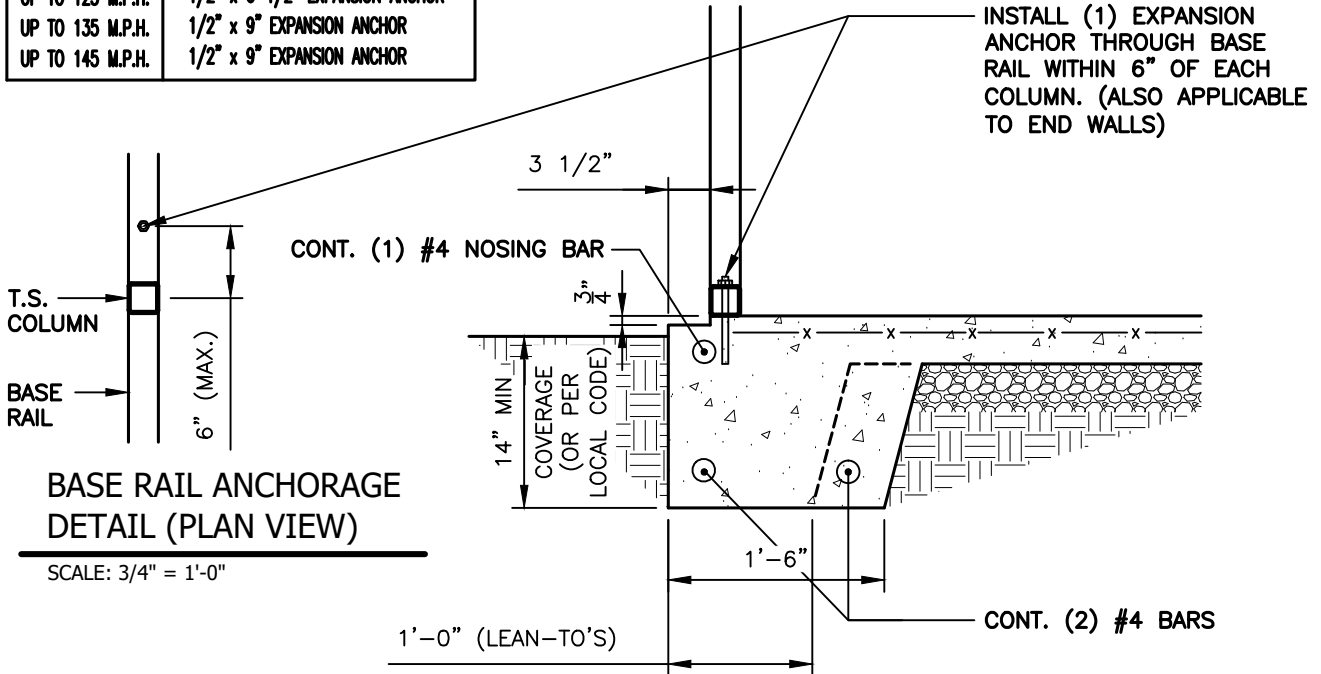
PROJECT NO:
24-511

DATE:
05.23.24

SHEET NO:
S6A

CONCRETE BASE RAIL ANCHORAGE

ANCHORAGE BOLT SCHEDULE	
WIND SPEED	BOLT SIZE
UP TO 115 M.P.H.	1/2" x 6-1/2" EXPANSION ANCHOR
UP TO 125 M.P.H.	1/2" x 6-1/2" EXPANSION ANCHOR
UP TO 135 M.P.H.	1/2" x 9" EXPANSION ANCHOR
UP TO 145 M.P.H.	1/2" x 9" EXPANSION ANCHOR



**BASE RAIL ANCHORAGE
DETAIL (PLAN VIEW)**

SCALE: 3/4" = 1'-0"

1
S7 **BASE RAIL ANCHORAGE DETAIL**

SCALE: 3/4" = 1'-0"

GENERAL NOTES:

ALL CONCRETE MONOLITHIC SLAB DESIGN BASED ON MINIMUM SOIL BEARING CAPACITY OF 2,000 P.S.F.

CONCRETE:

CONCRETE SHALL HAVE A MINIMUM SPECIFIED COMPRESSIVE STRENGTH OF 3,000 P.S.I. AT 28 DAYS.

COVER OVER REINFORCING STEEL:

FOR FOUNDATIONS, MINIMUM CONCRETE COVER OVER REINFORCING BARS SHALL BE PER ACI-318: 3" IN FOUNDATIONS WHERE THE CONCRETE IS CAST AGAINST AND PERMANENTLY IN CONTACT WITH THE EARTH OR EXPOSED TO THE EARTH AND WEATHER AND 1-1/2" ELSEWHERE.

REINFORCING STEEL:

THE TURNDOWN REINFORCING STEEL SHALL BE ASTM A615 GRADE 60. THE SLAB REINFORCEMENT SHALL BE WELDED WIRE FABRIC MEETING ASTM A185 OR FIBERGLASS FIBER REINFORCEMENT.

REINFORCEMENT MAT BE BENT IN THE SHOP OF THE FIELD PROVIDED:

1. REINFORCEMENT IS BENT COLD.
2. THE DIAMETER OF THE BEND, MEASURED ON THE INSIDE OF THE BAR, IS NOT LESS THAN SIX-BAR DIAMETERS.
3. REINFORCEMENT PARTIALLY EMBEDDED IN CONCRETE SHALL NOT BE FIELD BENT.



TAYLOR & VIOLA
STRUCTURAL ENGINEERS
P.O.B. 2616 HICKORY NORTH CAROLINA
TELE: 828-328-6331 FAX: 828-322-1801
WWW.TAYLORVIOLA.COM

JCMT Associates, PLLC
211 Stone Drive, Pilot Mountain, NC 27041
Telephone: (336) 399-6277

VI.0

SELECT STEEL
BUILDINGS, INC.

2745 STATESVILLE RD.
WILKESBORO, NORTH CAROLINA 28697
TELE: 366-973-0721

DRAWN BY:
BKS

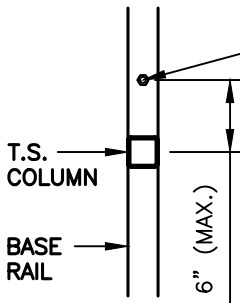
PROJECT NO:
24-511

DATE:
05.23.24

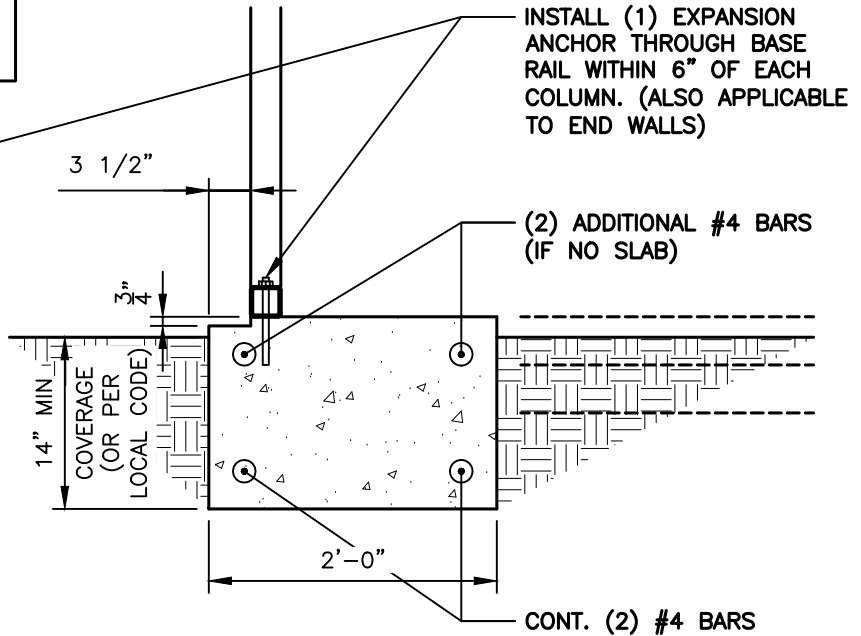
SHEET NO:
S7

CONCRETE BASE RAIL ANCHORAGE (NO SLAB)

ANCHORAGE BOLT SCHEDULE	
WIND SPEED	BOLT SIZE
UP TO 115 M.P.H.	1/2" x 6-1/2" EXPANSION ANCHOR
UP TO 125 M.P.H.	1/2" x 6-1/2" EXPANSION ANCHOR
UP TO 135 M.P.H.	1/2" x 9" EXPANSION ANCHOR
UP TO 145 M.P.H.	1/2" x 9" EXPANSION ANCHOR



SCALE: 3/4" = 1'-0"



1
S7A

BASE RAIL ANCHORAGE DETAIL (NO SLAB)

SCALE: 3/4" = 1'-0"

GENERAL NOTES:

ALL CONCRETE MONOLITHIC SLAB DESIGN BASED ON MINIMUM SOIL BEARING CAPACITY OF 2,000 P.S.F.

CONCRETE:

CONCRETE SHALL HAVE A MINIMUM SPECIFIED COMPRESSIVE STRENGTH OF 3,000 P.S.I. AT 28 DAYS.

COVER OVER REINFORCING STEEL:

FOR FOUNDATIONS, MINIMUM CONCRETE COVER OVER REINFORCING BARS SHALL BE PER ACI-318: 3" IN FOUNDATIONS WHERE THE CONCRETE IS CAST AGAINST AND PERMANENTLY IN CONTACT WITH THE EARTH OR EXPOSED TO THE EARTH AND WEATHER AND 1-1/2" ELSEWHERE.

REINFORCING STEEL:

THE TURNDOWN REINFORCING STEEL SHALL BE ASTM A615 GRADE 60. THE SLAB REINFORCEMENT SHALL BE WELDED WIRE FABRIC MEETING ASTM A185 OR FIBERGLASS FIBER REINFORCEMENT.

REINFORCEMENT MAT BE BENT IN THE SHOP OF THE FIELD PROVIDED:

1. REINFORCEMENT IS BENT COLD.
2. THE DIAMETER OF THE BEND, MEASURED ON THE INSIDE OF THE BAR, IS NOT LESS THAN SIX-BAR DIAMETERS.
3. REINFORCEMENT PARTIALLY EMBEDDED IN CONCRETE SHALL NOT BE FIELD BENT.



TAYLOR & VIOLA
STRUCTURAL ENGINEERS
P.O.B. 2616 HICKORY NORTH CAROLINA
TELE: 828-328-6331 FAX: 828-322-1801
WWW.TAYLORVIOLA.COM

JCMT Associates, PLLC

211 Stone Drive, Pilot Mountain, NC 27041
Telephone: (336) 399-6277

VI.0

SELECT STEEL
BUILDINGS, INC.

2745 STATESVILLE RD.
WILKESBORO, NORTH CAROLINA 28697
TELE: 366-973-0721

DRAWN BY:
BKS

PROJECT NO:
24-511

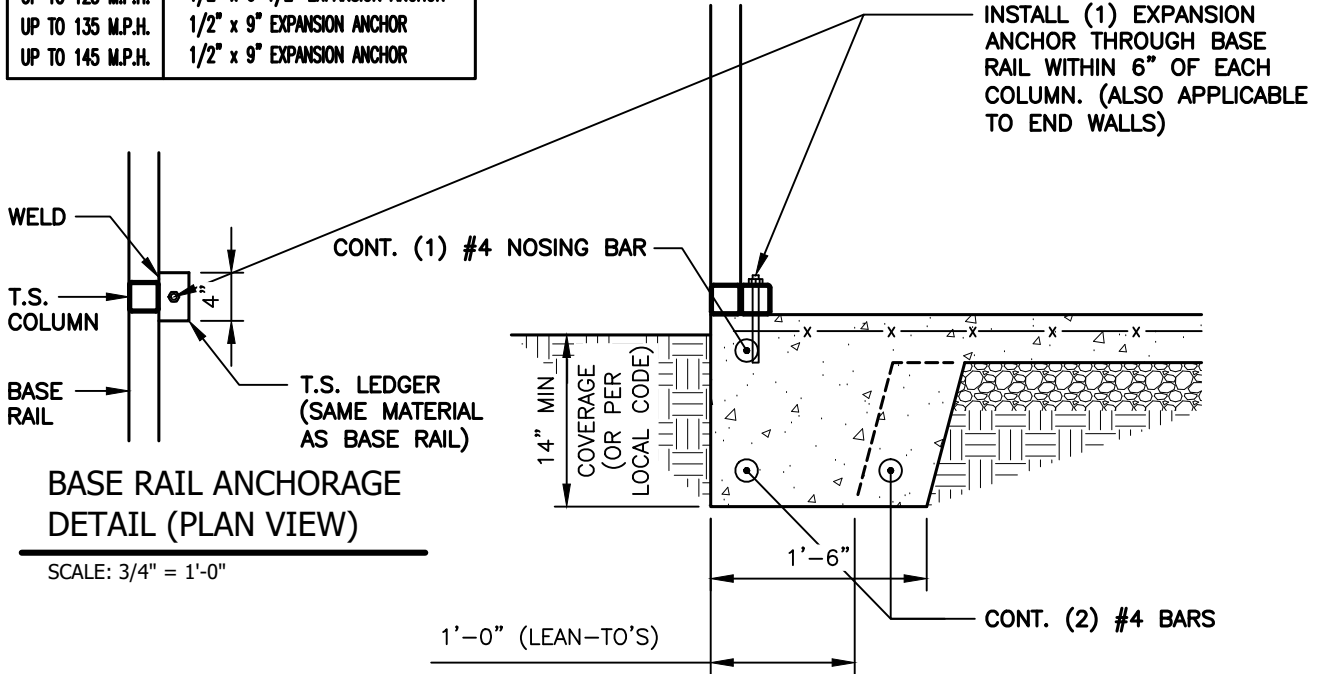
DATE:
05.23.24

SHEET NO:
S7A

NOTE: THESE DRAWINGS ARE VALID FOR (1) CALENDER YEAR AFTER THE ISSUE DATE LISTED ON THIS SHEET.

CONCRETE BASE RAIL ANCHORAGE (NO LEDGE)

ANCHORAGE BOLT SCHEDULE	
WIND SPEED	BOLT SIZE
UP TO 115 M.P.H.	1/2" x 6-1/2" EXPANSION ANCHOR
UP TO 125 M.P.H.	1/2" x 6-1/2" EXPANSION ANCHOR
UP TO 135 M.P.H.	1/2" x 9" EXPANSION ANCHOR
UP TO 145 M.P.H.	1/2" x 9" EXPANSION ANCHOR



**BASE RAIL ANCHORAGE
DETAIL (PLAN VIEW)**

SCALE: 3/4" = 1'-0"



BASE RAIL ANCHORAGE DETAIL

SCALE: 3/4" = 1'-0"

GENERAL NOTES:

ALL CONCRETE MONOLITHIC SLAB DESIGN BASED ON MINIMUM SOIL BEARING CAPACITY OF 2,000 P.S.F.

CONCRETE:

CONCRETE SHALL HAVE A MINIMUM SPECIFIED COMPRESSIVE STRENGTH OF 3,000 P.S.I. AT 28 DAYS.

COVER OVER REINFORCING STEEL:

FOR FOUNDATIONS, MINIMUM CONCRETE COVER OVER REINFORCING BARS SHALL BE PER ACI-318: 3" IN FOUNDATIONS WHERE THE CONCRETE IS CAST AGAINST AND PERMANENTLY IN CONTACT WITH THE EARTH OR EXPOSED TO THE EARTH AND WEATHER AND 1-1/2" ELSEWHERE.

REINFORCING STEEL:

THE TURNDOWN REINFORCING STEEL SHALL BE ASTM A615 GRADE 60. THE SLAB REINFORCEMENT SHALL BE WELDED WIRE FABRIC MEETING ASTM A185 OR FIBERGLASS FIBER REINFORCEMENT.

REINFORCEMENT MAT BE BENT IN THE SHOP OF THE FIELD PROVIDED:

1. REINFORCEMENT IS BENT COLD.
2. THE DIAMETER OF THE BEND, MEASURED ON THE INSIDE OF THE BAR, IS NOT LESS THAN SIX-BAR DIAMETERS.
3. REINFORCEMENT PARTIALLY EMBEDDED IN CONCRETE SHALL NOT BE FIELD BENT.



TAYLOR & VIOLA
STRUCTURAL ENGINEERS
P.O.B. 2616 HICKORY NORTH CAROLINA
TELE: 828-328-6331 FAX: 828-322-1801
WWW.TAYLORVIOLA.COM

JCMT Associates, PLLC

211 Stone Drive, Pilot Mountain, NC 27041
Telephone: (336) 399-6277

VI.0

SELECT STEEL
BUILDINGS, INC.

2745 STATESVILLE RD.
WILKESBORO, NORTH CAROLINA 28697
TELE: 366-973-0721

DRAWN BY:
BKS

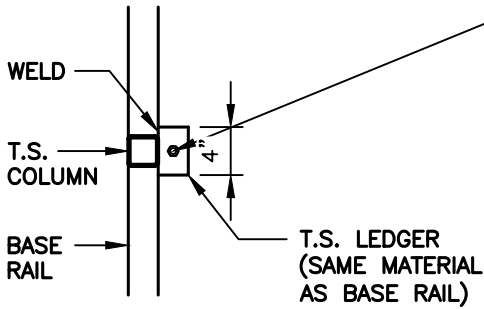
PROJECT NO:
24-511

DATE:
05.23.24

SHEET NO:
S7B

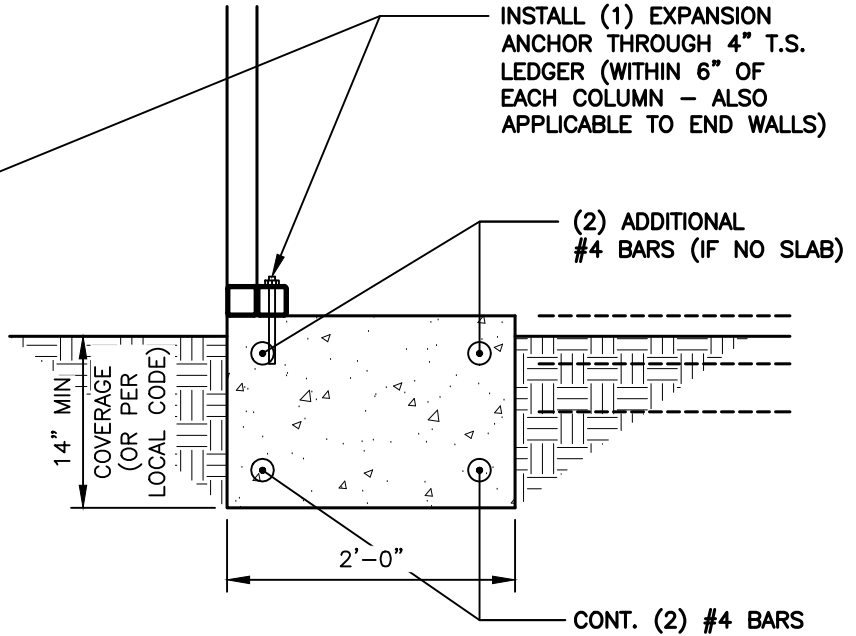
CONCRETE BASE RAIL ANCHORAGE (NO LEDGE / NO SLAB)

ANCHORAGE BOLT SCHEDULE	
WIND SPEED	BOLT SIZE
UP TO 115 M.P.H.	1/2" x 6-1/2" EXPANSION ANCHOR
UP TO 125 M.P.H.	1/2" x 6-1/2" EXPANSION ANCHOR
UP TO 135 M.P.H.	1/2" x 9" EXPANSION ANCHOR
UP TO 145 M.P.H.	1/2" x 9" EXPANSION ANCHOR



**BASE RAIL ANCHORAGE
DETAIL (PLAN VIEW)**

SCALE: 3/4" = 1'-0"



1
S7C

BASE RAIL ANCHORAGE DETAIL (NO SLAB)

SCALE: 3/4" = 1'-0"

GENERAL NOTES:

ALL CONCRETE MONOLITHIC SLAB DESIGN BASED ON MINIMUM SOIL BEARING CAPACITY OF 2,000 P.S.F.

CONCRETE:

CONCRETE SHALL HAVE A MINIMUM SPECIFIED COMPRESSIVE STRENGTH OF 3,000 P.S.I. AT 28 DAYS.

COVER OVER REINFORCING STEEL:

FOR FOUNDATIONS, MINIMUM CONCRETE COVER OVER REINFORCING BARS SHALL BE PER ACI-318: 3" IN FOUNDATIONS WHERE THE CONCRETE IS CAST AGAINST AND PERMANENTLY IN CONTACT WITH THE EARTH OR EXPOSED TO THE EARTH AND WEATHER AND 1-1/2" ELSEWHERE.

REINFORCING STEEL:

THE TURNDOWN REINFORCING STEEL SHALL BE ASTM A615 GRADE 60. THE SLAB REINFORCEMENT SHALL BE WELDED WIRE FABRIC MEETING ASTM A185 OR FIBERGLASS FIBER REINFORCEMENT.

REINFORCEMENT MAT BE BENT IN THE SHOP OF THE FIELD PROVIDED:

1. REINFORCEMENT IS BENT COLD.
2. THE DIAMETER OF THE BEND, MEASURED ON THE INSIDE OF THE BAR, IS NOT LESS THAN SIX-BAR DIAMETERS.
3. REINFORCEMENT PARTIALLY EMBEDDED IN CONCRETE SHALL NOT BE FIELD BENT.



TAYLOR & VIOLA
STRUCTURAL ENGINEERS
P.O.B. 2616 HICKORY NORTH CAROLINA
TELE: 828-328-6331 FAX: 828-322-1801
WWW.TAYLORVIOLA.COM

JCMT Associates, PLLC
211 Stone Drive, Pilot Mountain, NC 27041
Telephone: (336) 399-6277

VI.0

SELECT STEEL
BUILDINGS, INC.

2745 STATESVILLE RD.
WILKESBORO, NORTH CAROLINA 28697
TELE: 366-973-0721

DRAWN BY:
BKS

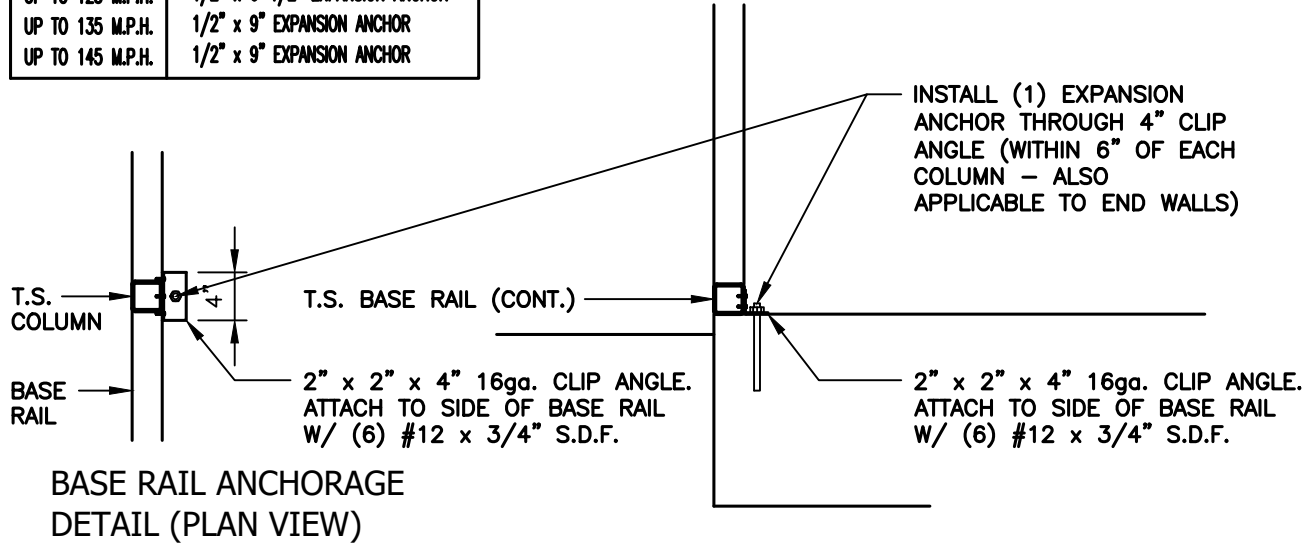
PROJECT NO:
24-511

DATE:
05.23.24

SHEET NO:
S7C

CONCRETE BASE RAIL ANCHORAGE (CLIP ANGLE ATTACHMENT OPTION)

ANCHORAGE BOLT SCHEDULE	
WIND SPEED	BOLT SIZE
UP TO 115 M.P.H.	1/2" x 6-1/2" EXPANSION ANCHOR
UP TO 125 M.P.H.	1/2" x 6-1/2" EXPANSION ANCHOR
UP TO 135 M.P.H.	1/2" x 9" EXPANSION ANCHOR
UP TO 145 M.P.H.	1/2" x 9" EXPANSION ANCHOR



**BASE RAIL ANCHORAGE
DETAIL (PLAN VIEW)**

SCALE: 3/4" = 1'-0"

**BASE RAIL ANCHORAGE DETAIL
(CLIP ANGLE ATTACHMENT OPTION)**



SCALE: 3/4" = 1'-0"



TAYLOR & VIOLA
STRUCTURAL ENGINEERS
P.O.B. 2616 HICKORY NORTH CAROLINA
TELE: 828-328-6331 FAX: 828-322-1801
WWW.TAYLORVIOLA.COM

JCMT Associates, PLLC
211 Stone Drive, Pilot Mountain, NC 27041
Telephone: (336) 399-6277

VI.0

**SELECT STEEL
BUILDINGS, INC.**

2745 STATESVILLE RD.
WILKESBORO, NORTH CAROLINA 28697
TELE: 366-973-0721

DRAWN BY:
BKS

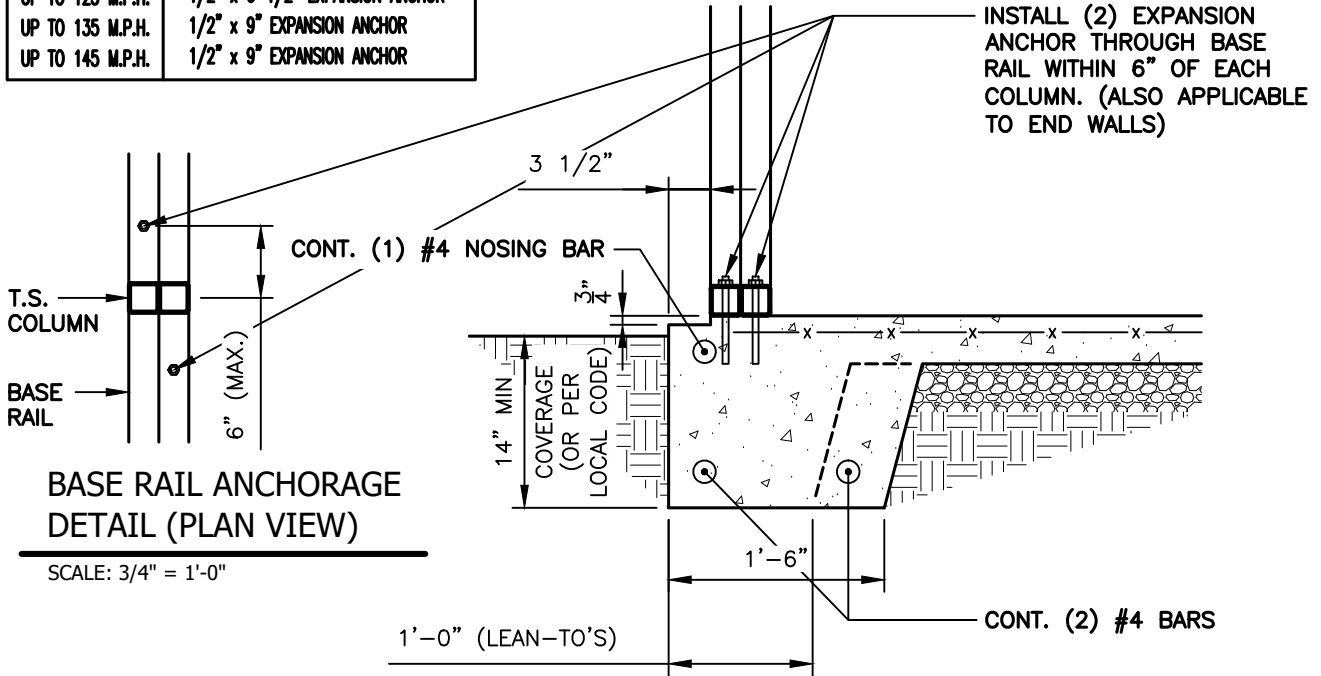
PROJECT NO:
24-511

DATE:
05.23.24

SHEET NO:
S7D

CONCRETE BASE RAIL ANCHORAGE

ANCHORAGE BOLT SCHEDULE	
WIND SPEED	BOLT SIZE
UP TO 115 M.P.H.	1/2" x 6-1/2" EXPANSION ANCHOR
UP TO 125 M.P.H.	1/2" x 6-1/2" EXPANSION ANCHOR
UP TO 135 M.P.H.	1/2" x 9" EXPANSION ANCHOR
UP TO 145 M.P.H.	1/2" x 9" EXPANSION ANCHOR



BASE RAIL ANCHORAGE DETAIL

SCALE: 3/4" = 1'-0"

GENERAL NOTES:

ALL CONCRETE MONOLITHIC SLAB DESIGN BASED ON MINIMUM SOIL BEARING CAPACITY OF 2,000 P.S.F.

CONCRETE:

CONCRETE SHALL HAVE A MINIMUM SPECIFIED COMPRESSIVE STRENGTH OF 3,000 P.S.I. AT 28 DAYS.

COVER OVER REINFORCING STEEL:

FOR FOUNDATIONS, MINIMUM CONCRETE COVER OVER REINFORCING BARS SHALL BE PER ACI-318: 3" IN FOUNDATIONS WHERE THE CONCRETE IS CAST AGAINST AND PERMANENTLY IN CONTACT WITH THE EARTH OR EXPOSED TO THE EARTH AND WEATHER AND 1-1/2" ELSEWHERE.

REINFORCING STEEL:

THE TURNDOWN REINFORCING STEEL SHALL BE ASTM A615 GRADE 60. THE SLAB REINFORCEMENT SHALL BE WELDED WIRE FABRIC MEETING ASTM A185 OR FIBERGLASS FIBER REINFORCEMENT.

REINFORCEMENT MAT BE BENT IN THE SHOP OF THE FIELD PROVIDED:

1. REINFORCEMENT IS BENT COLD.
2. THE DIAMETER OF THE BEND, MEASURED ON THE INSIDE OF THE BAR, IS NOT LESS THAN SIX-BAR DIAMETERS.
3. REINFORCEMENT PARTIALLY EMBEDDED IN CONCRETE SHALL NOT BE FIELD BENT.



TAYLOR & VIOLA
STRUCTURAL ENGINEERS
P.O.B. 2616 HICKORY NORTH CAROLINA
TELE: 828-328-6331 FAX: 828-322-1801
WWW.TAYLORVIOLA.COM

JCMT Associates, PLLC

211 Stone Drive, Pilot Mountain, NC 27041
Telephone: (336) 399-6277

VI.0

SELECT STEEL
BUILDINGS, INC.

2745 STATESVILLE RD.
WILKESBORO, NORTH CAROLINA 28697
TELE: 366-973-0721

DRAWN BY:
BKS

PROJECT NO:
24-511

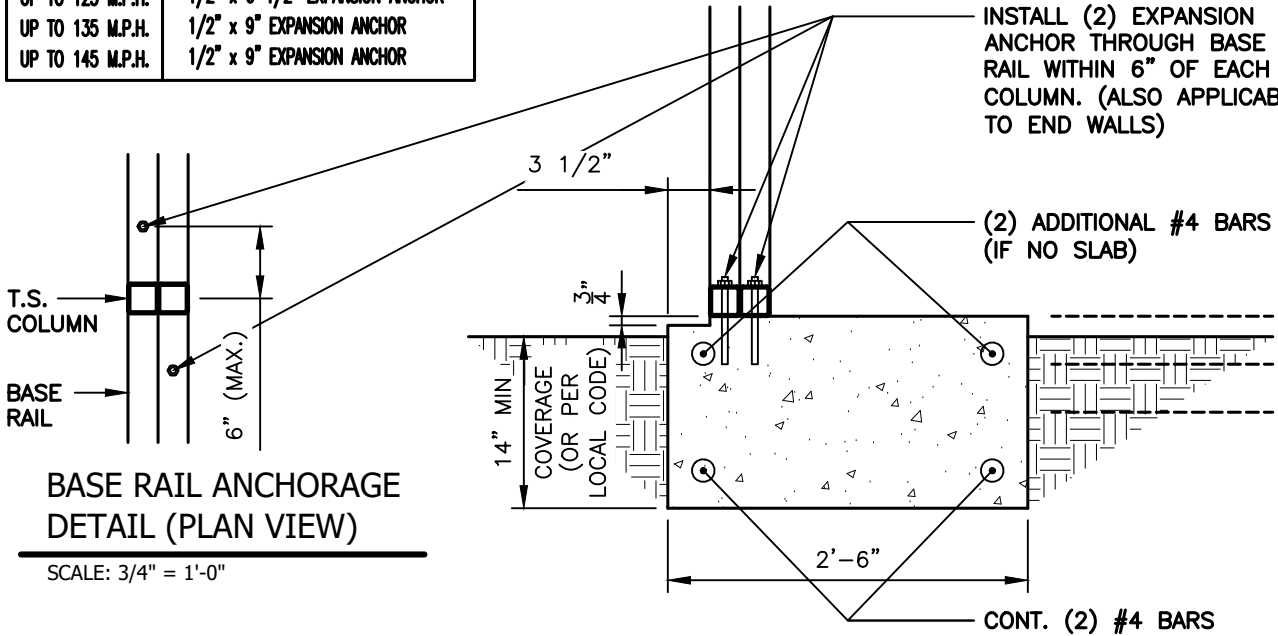
DATE:
05.23.24

SHEET NO:
S7E

NOTE: THESE DRAWINGS ARE VALID FOR (1) CALENDER YEAR AFTER THE ISSUE DATE LISTED ON THIS SHEET.

CONCRETE BASE RAIL ANCHORAGE (NO SLAB)

ANCHORAGE BOLT SCHEDULE	
WIND SPEED	BOLT SIZE
UP TO 115 M.P.H.	1/2" x 6-1/2" EXPANSION ANCHOR
UP TO 125 M.P.H.	1/2" x 6-1/2" EXPANSION ANCHOR
UP TO 135 M.P.H.	1/2" x 9" EXPANSION ANCHOR
UP TO 145 M.P.H.	1/2" x 9" EXPANSION ANCHOR



**BASE RAIL ANCHORAGE
DETAIL (PLAN VIEW)**

SCALE: 3/4" = 1'-0"

1
BASE RAIL ANCHORAGE DETAIL (NO SLAB)
S7F

SCALE: 3/4" = 1'-0"

GENERAL NOTES:

ALL CONCRETE MONOLITHIC SLAB DESIGN BASED ON MINIMUM SOIL BEARING CAPACITY OF 2,000 P.S.F.

CONCRETE:

CONCRETE SHALL HAVE A MINIMUM SPECIFIED COMPRESSIVE STRENGTH OF 3,000 P.S.I. AT 28 DAYS.

COVER OVER REINFORCING STEEL:

FOR FOUNDATIONS, MINIMUM CONCRETE COVER OVER REINFORCING BARS SHALL BE PER ACI-318: 3" IN FOUNDATIONS WHERE THE CONCRETE IS CAST AGAINST AND PERMANENTLY IN CONTACT WITH THE EARTH OR EXPOSED TO THE EARTH AND WEATHER AND 1-1/2" ELSEWHERE.

REINFORCING STEEL:

THE TURNDOWN REINFORCING STEEL SHALL BE ASTM A615 GRADE 60. THE SLAB REINFORCEMENT SHALL BE WELDED WIRE FABRIC MEETING ASTM A185 OR FIBERGLASS FIBER REINFORCEMENT.

REINFORCEMENT MAT BE BENT IN THE SHOP OF THE FIELD PROVIDED:

1. REINFORCEMENT IS BENT COLD.
2. THE DIAMETER OF THE BEND, MEASURED ON THE INSIDE OF THE BAR, IS NOT LESS THAN SIX-BAR DIAMETERS.
3. REINFORCEMENT PARTIALLY EMBEDDED IN CONCRETE SHALL NOT BE FIELD BENT.



TAYLOR & VIOLA
STRUCTURAL ENGINEERS
P.O.B. 2616 HICKORY NORTH CAROLINA
TELE: 828-328-6331 FAX: 828-322-1801
WWW.TAYLORVIOLA.COM

JCMT Associates, PLLC

211 Stone Drive, Pilot Mountain, NC 27041
Telephone: (336) 399-6277

VI.0

SELECT STEEL
BUILDINGS, INC.

2745 STATESVILLE RD.
WILKESBORO, NORTH CAROLINA 28697
TELE: 366-973-0721

DRAWN BY:
BKS

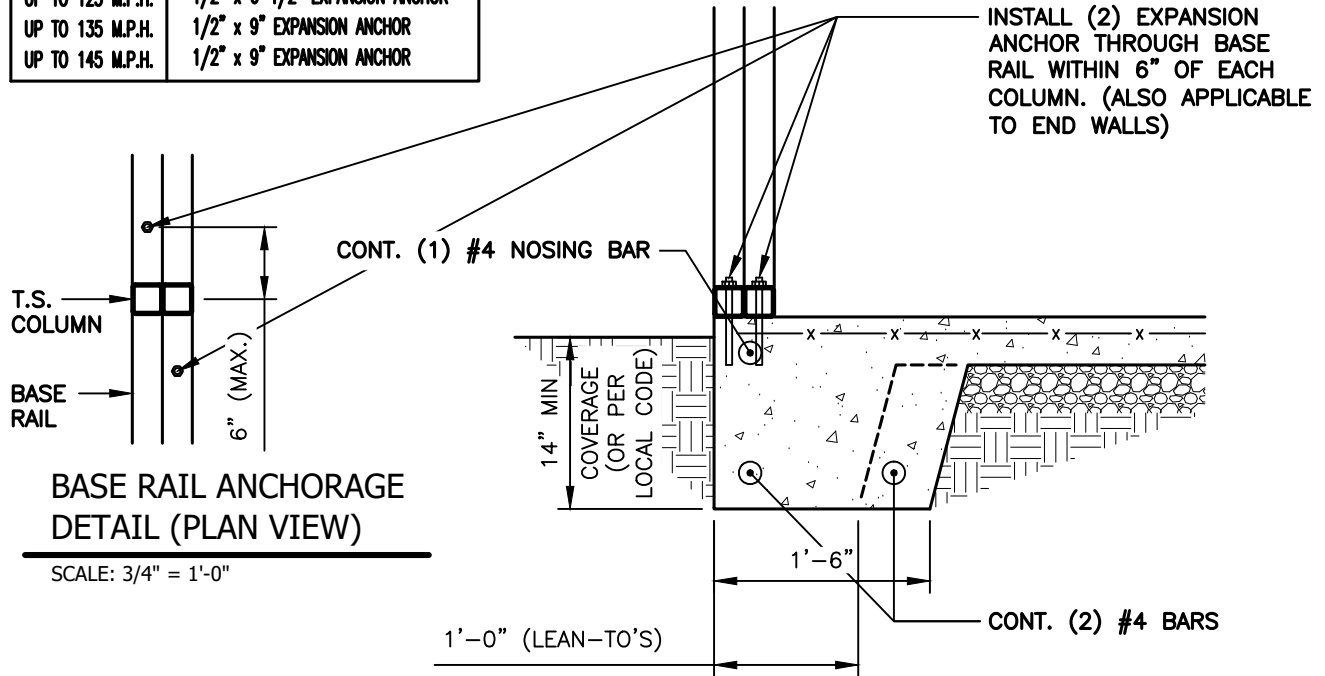
PROJECT NO:
24-511

DATE:
05.23.24

SHEET NO:
S7F

CONCRETE BASE RAIL ANCHORAGE (NO LEDGE)

ANCHORAGE BOLT SCHEDULE	
WIND SPEED	BOLT SIZE
UP TO 115 M.P.H.	1/2" x 6-1/2" EXPANSION ANCHOR
UP TO 125 M.P.H.	1/2" x 6-1/2" EXPANSION ANCHOR
UP TO 135 M.P.H.	1/2" x 9" EXPANSION ANCHOR
UP TO 145 M.P.H.	1/2" x 9" EXPANSION ANCHOR



**BASE RAIL ANCHORAGE
DETAIL (PLAN VIEW)**

SCALE: 3/4" = 1'-0"

1
S7G **BASE RAIL ANCHORAGE DETAIL**
SCALE: 3/4" = 1'-0"

GENERAL NOTES:

ALL CONCRETE MONOLITHIC SLAB DESIGN BASED ON MINIMUM SOIL BEARING CAPACITY OF 2,000 P.S.F.

CONCRETE:

CONCRETE SHALL HAVE A MINIMUM SPECIFIED COMPRESSIVE STRENGTH OF 3,000 P.S.I. AT 28 DAYS.

COVER OVER REINFORCING STEEL:

FOR FOUNDATIONS, MINIMUM CONCRETE COVER OVER REINFORCING BARS SHALL BE PER ACI-318: 3" IN FOUNDATIONS WHERE THE CONCRETE IS CAST AGAINST AND PERMANENTLY IN CONTACT WITH THE EARTH OR EXPOSED TO THE EARTH AND WEATHER AND 1-1/2" ELSEWHERE.

REINFORCING STEEL:

THE TURNDOWN REINFORCING STEEL SHALL BE ASTM A615 GRADE 60. THE SLAB REINFORCEMENT SHALL BE WELDED WIRE FABRIC MEETING ASTM A185 OR FIBERGLASS FIBER REINFORCEMENT.

REINFORCEMENT MAT BE BENT IN THE SHOP OF THE FIELD PROVIDED:

1. REINFORCEMENT IS BENT COLD.
2. THE DIAMETER OF THE BEND, MEASURED ON THE INSIDE OF THE BAR, IS NOT LESS THAN SIX-BAR DIAMETERS.
3. REINFORCEMENT PARTIALLY EMBEDDED IN CONCRETE SHALL NOT BE FIELD BENT.



TAYLOR & VIOLA
STRUCTURAL ENGINEERS
P.O.B. 2616 HICKORY NORTH CAROLINA
TELE: 828-328-6331 FAX: 828-322-1801
WWW.TAYLORVIOLA.COM

JCMT Associates, PLLC
211 Stone Drive, Pilot Mountain, NC 27041
Telephone: (336) 399-6277

VI.0

SELECT STEEL
BUILDINGS, INC.

2745 STATESVILLE RD.
WILKESBORO, NORTH CAROLINA 28697
TELE: 366-973-0721

DRAWN BY:
BKS

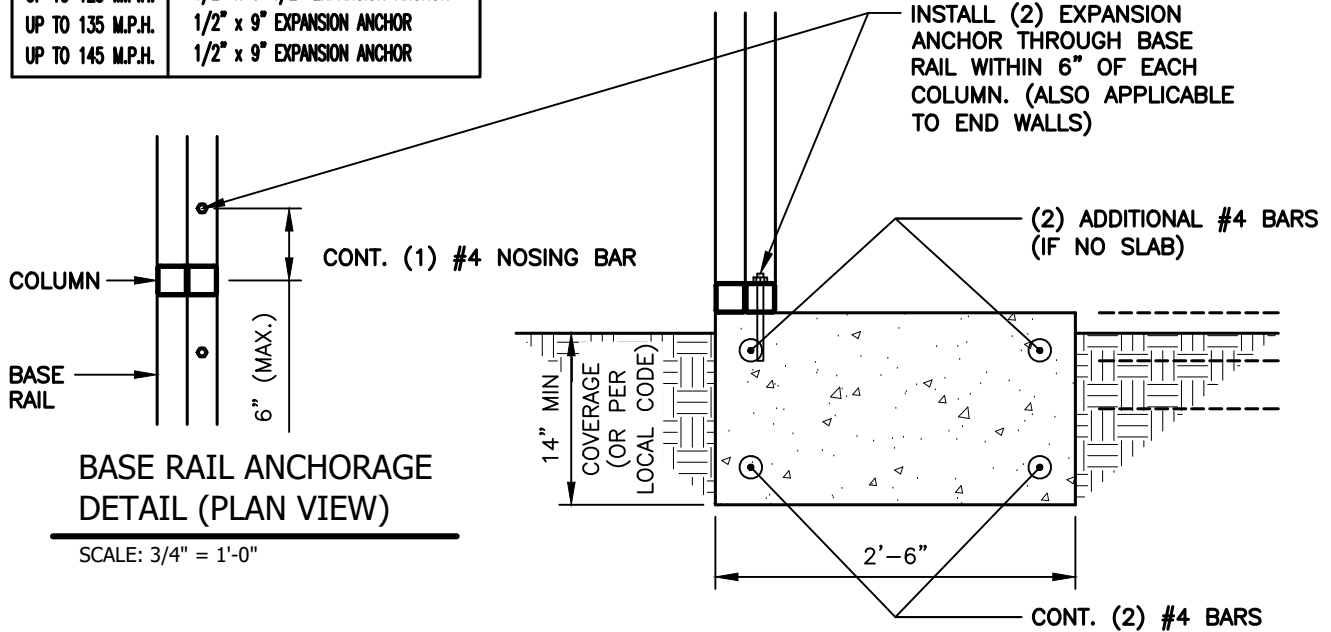
PROJECT NO:
24-511

DATE:
05.23.24

SHEET NO:
S7G

CONCRETE BASE RAIL ANCHORAGE (NO LEDGE / NO SLAB)

ANCHORAGE BOLT SCHEDULE	
WIND SPEED	BOLT SIZE
UP TO 115 M.P.H.	1/2" x 6-1/2" EXPANSION ANCHOR
UP TO 125 M.P.H.	1/2" x 6-1/2" EXPANSION ANCHOR
UP TO 135 M.P.H.	1/2" x 9" EXPANSION ANCHOR
UP TO 145 M.P.H.	1/2" x 9" EXPANSION ANCHOR



1
BASE RAIL ANCHORAGE DETAIL
 SCALE: 3/4" = 1'-0"

GENERAL NOTES:

ALL CONCRETE MONOLITHIC SLAB DESIGN BASED ON MINIMUM SOIL BEARING CAPACITY OF 2,000 P.S.F.

CONCRETE:

CONCRETE SHALL HAVE A MINIMUM SPECIFIED COMPRESSIVE STRENGTH OF 3,000 P.S.I. AT 28 DAYS.

COVER OVER REINFORCING STEEL:

FOR FOUNDATIONS, MINIMUM CONCRETE COVER OVER REINFORCING BARS SHALL BE PER ACI-318: 3" IN FOUNDATIONS WHERE THE CONCRETE IS CAST AGAINST AND PERMANENTLY IN CONTACT WITH THE EARTH OR EXPOSED TO THE EARTH AND WEATHER AND 1-1/2" ELSEWHERE.

REINFORCING STEEL:

THE TURNDOWN REINFORCING STEEL SHALL BE ASTM A615 GRADE 60. THE SLAB REINFORCEMENT SHALL BE WELDED WIRE FABRIC MEETING ASTM A185 OR FIBERGLASS FIBER REINFORCEMENT.

REINFORCEMENT MAT BE BENT IN THE SHOP OF THE FIELD PROVIDED:

1. REINFORCEMENT IS BENT COLD.
2. THE DIAMETER OF THE BEND, MEASURED ON THE INSIDE OF THE BAR, IS NOT LESS THAN SIX-BAR DIAMETERS.
3. REINFORCEMENT PARTIALLY EMBEDDED IN CONCRETE SHALL NOT BE FIELD BENT.



TAYLOR & VIOLA
 STRUCTURAL ENGINEERS
 P.O.B. 2616 HICKORY NORTH CAROLINA
 TELE: 828-328-6331 FAX: 828-322-1801
 WWW.TAYLORVIOLA.COM

JCMT Associates, PLLC
 211 Stone Drive, Pilot Mountain, NC 27041
 Telephone: (336) 399-6277

VI.0

SELECT STEEL
 BUILDINGS, INC.

2745 STATESVILLE RD.
 WILKESBORO, NORTH CAROLINA 28697
 TELE: 366-973-0721

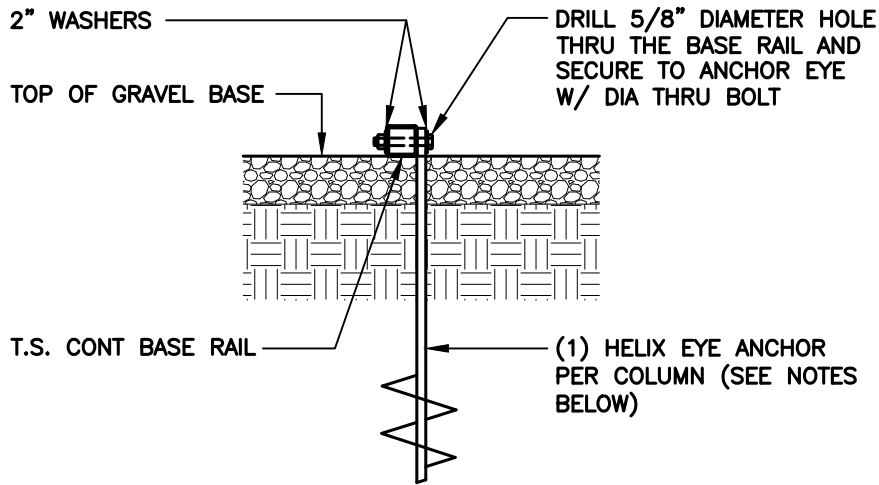
DRAWN BY:
 BKS

PROJECT NO:
 24-511

DATE:
 05.23.24

SHEET NO:
S7H

SOIL NAIL BASE RAIL ANCHORAGE



1
S8
BASE RAIL ANCHORAGE DETAIL
 SCALE: 3/4" = 1'-0"

HELIX EMBEDMENT INFORMATION:

FOR VERY DENSE OR CEMENTED SANDS, COARSE GRAVEL, COBBLES, CALICHE, PRELOADED SILT.S. AND CLAYS, USE MIN. (2) 4" HELICES WITH MINIMUM 30" EMBEDMENT OR SINGLE 6" HELIX WITH 50" EMBEDMENT - ONE EACH END BASE RAIL AND 20'-0"oc MAX. WITH #4 REBAR AT 5'-0"oc BETWEEN.

FOR CORAL, USE MIN (2) 4" HELICES WITH MINIMUM 30" EMBEDMENT OR SINGLE 6" HELIX WITH 50" EMBEDMENT - ONE EACH END BASE RAIL AND 20'-0"oc MAX. WITH #4 REBAR AT 5'-0"oc BETWEEN.

FOR MED DENSE COARSE SANDS, SANDY GRAVEL, VERY STIFF SILT.S., AND CLAYS, USE MIN (2) 4" HELICES WITH MINIMUM 30" EMBEDMENT OR SINGLE 6" HELIX WITH 50" EMBEDMENT - ONE EACH END BASE RAIL AND 20'-0"oc MAX. WITH #4 REBAR AT 5'-0"oc BETWEEN.

FOR LOOSE TO MEDIUM DENSE SANDS, FIRM TO STIFF CLAYS AND SILT.S., USE MIN (2) 6" HELICES WITH MINIMUM 50" EMBEDMENT - ONE EACH END BASE RAIL AND 20'-0"oc MAX. WITH #4 REBAR AT 5'-0"oc BETWEEN.

FOR VERY LOOSE TO MEDIUM DENSE SANDS, FIRM TO STIFFER CLAYS AND SILT.S. AND ALLUVIAL FILL, USE MIN (2) 8" HELICES WITH MINIMUM 60" EMBEDMENT - ONE EACH END BASE RAIL AND 20'-0"oc MAX. WITH #4 REBAR AT 5'-0"oc BETWEEN.

NOTE:

IN ALL CASES, IF FROST DEPTH EXCEEDS STATED DEPTH, ANCHOR SHOULD EXTEND A MIN. OF 12" BELOW FROST LINE.



TAYLOR & VIOLA
 STRUCTURAL ENGINEERS
 P.O.B. 2616 HICKORY NORTH CAROLINA
 TELE: 828-328-6331 FAX: 828-322-1801
 WWW.TAYLORVIOLA.COM

JCMT Associates, PLLC
 211 Stone Drive, Pilot Mountain, NC 27041
 Telephone: (336) 399-6277

VI.0

SELECT STEEL
 BUILDINGS, INC.

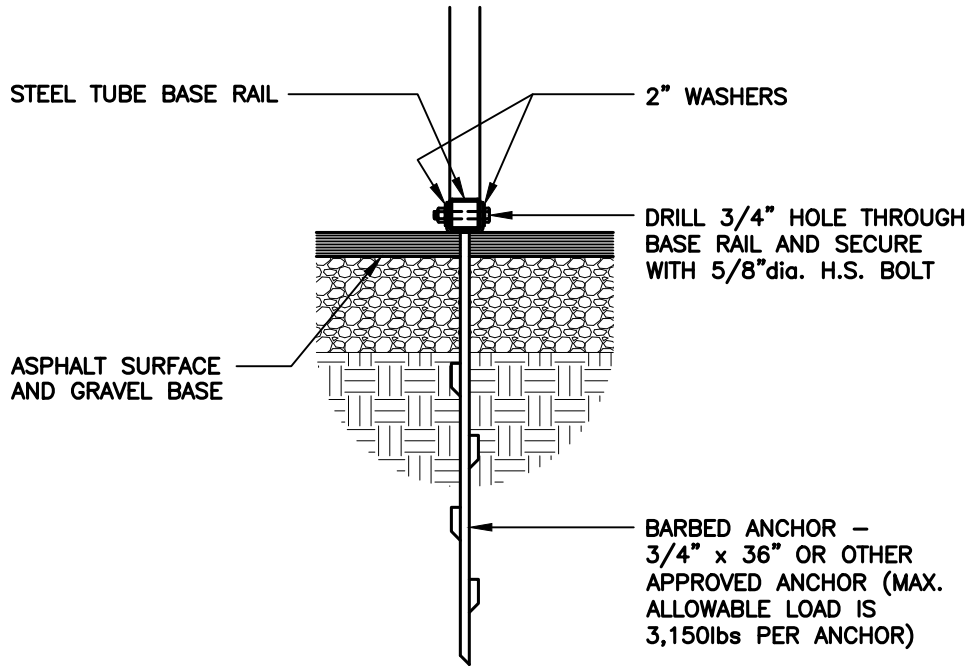
2745 STATESVILLE RD.
 WILKESBORO, NORTH CAROLINA 28697
 TELE: 366-973-0721

DRAWN BY:
 BKS

DATE:
 05.23.24

PROJECT NO:
 24-511

SHEET NO:
S8



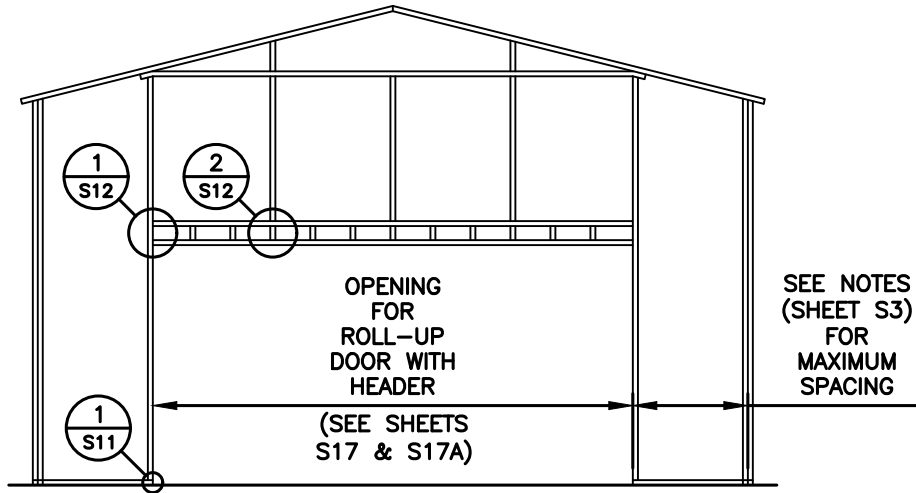
1
S8A ASPHALT / BASE RAIL ANCHORAGE DETAIL
SCALE: 3/4" = 1'-0"

NOTE:
IN ALL CASES, IF FROST DEPTH EXCEEDS STATED DEPTH,
ANCHOR SHOULD EXTEND A MIN. OF 12" BELOW FROST LINE.

 <p>TAYLOR & VIOLA STRUCTURAL ENGINEERS P.O.B. 2616 HICKORY NORTH CAROLINA TELE: 828-328-6331 FAX: 828-322-1801 WWW.TAYLORVIOLA.COM</p> <p>JCMT Associates, PLLC 211 Stone Drive, Pilot Mountain, NC 27041 Telephone: (336) 399-6277</p> <p>VI.0</p>	<p>SELECT STEEL BUILDINGS, INC.</p> <p>2745 STATESVILLE RD. WILKESBORO, NORTH CAROLINA 28697 TELE: 366-973-0721</p>	<p>DRAWN BY: BKS</p>	<p>PROJECT NO: 24-511</p>
		<p>DATE: 05.23.24</p>	<p>SHEET NO: S8A</p>

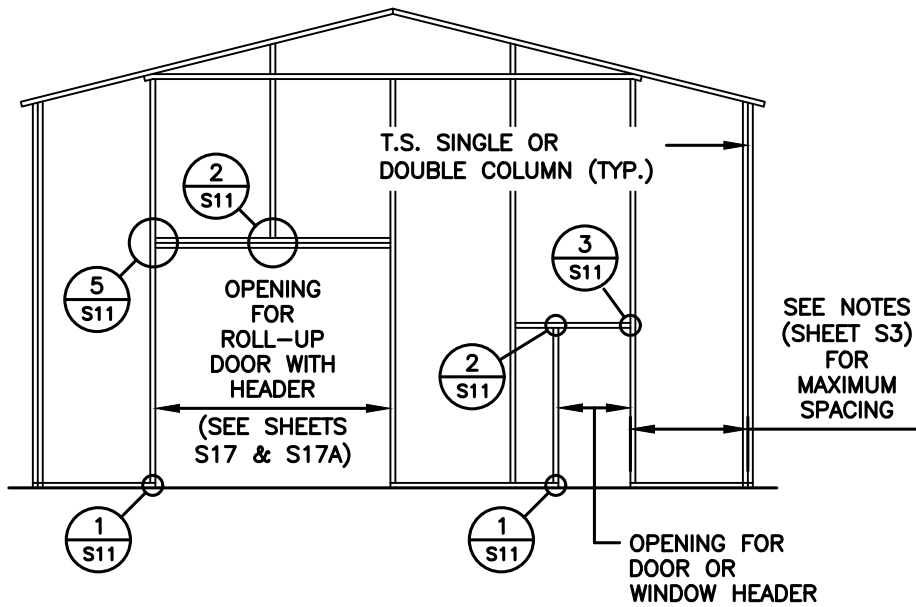
NOTE: THESE DRAWINGS ARE VALID FOR (1) CALENDER YEAR AFTER THE ISSUE DATE LISTED ON THIS SHEET.

BOX EVE RAFTER / END WALL OPENINGS



TYPICAL BOX EVE RAFTER END WALL OPENINGS FRAMING SECTION

NOTE:
 ROLL UP DOORS SHALL HAVE ONE JAMB EACH SIDE + ONE FRAME COLUMN BETWEEN OR SITE SPECIFIC SHALL BE REQ'D.



TYPICAL BOX EVE RAFTER END WALL OPENINGS FRAMING SECTION



TAYLOR & VIOLA
 STRUCTURAL ENGINEERS
 P.O.B. 2616 HICKORY NORTH CAROLINA
 TELE: 828-328-6331 FAX: 828-322-1801
 WWW.TAYLORVIOLA.COM

JCMT Associates, PLLC
 211 Stone Drive, Pilot Mountain, NC 27041
 Telephone: (336) 399-6277

VI.0

SELECT STEEL
 BUILDINGS, INC.

2745 STATESVILLE RD.
 WILKESBORO, NORTH CAROLINA 28697
 TELE: 366-973-0721

DRAWN BY:
 BKS

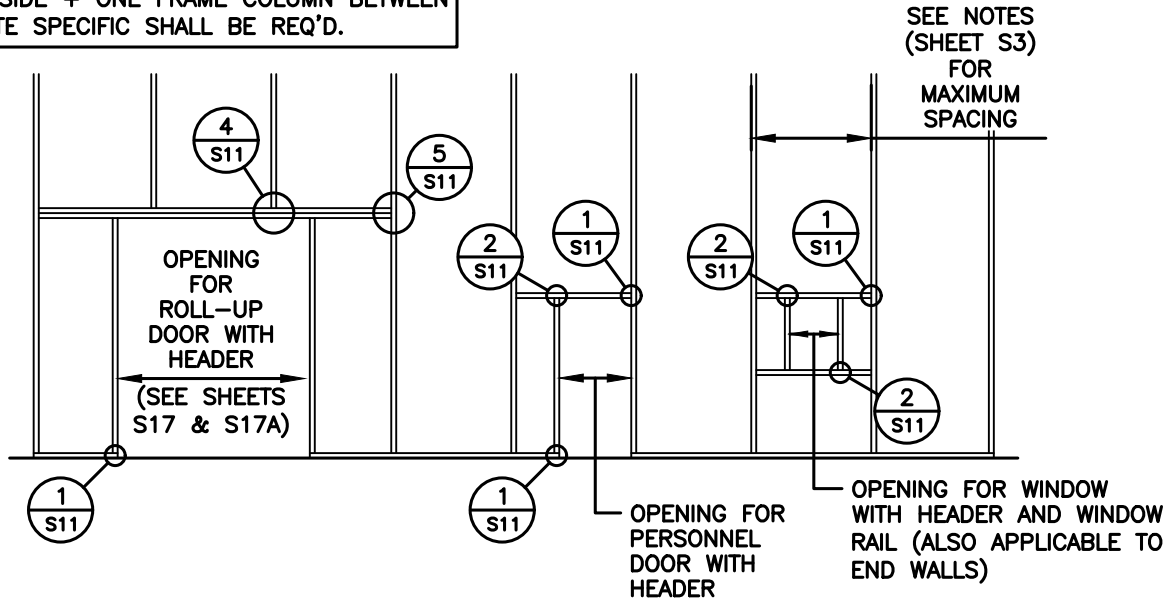
PROJECT NO:
 24-511

DATE:
 05.23.24

SHEET NO:
S9

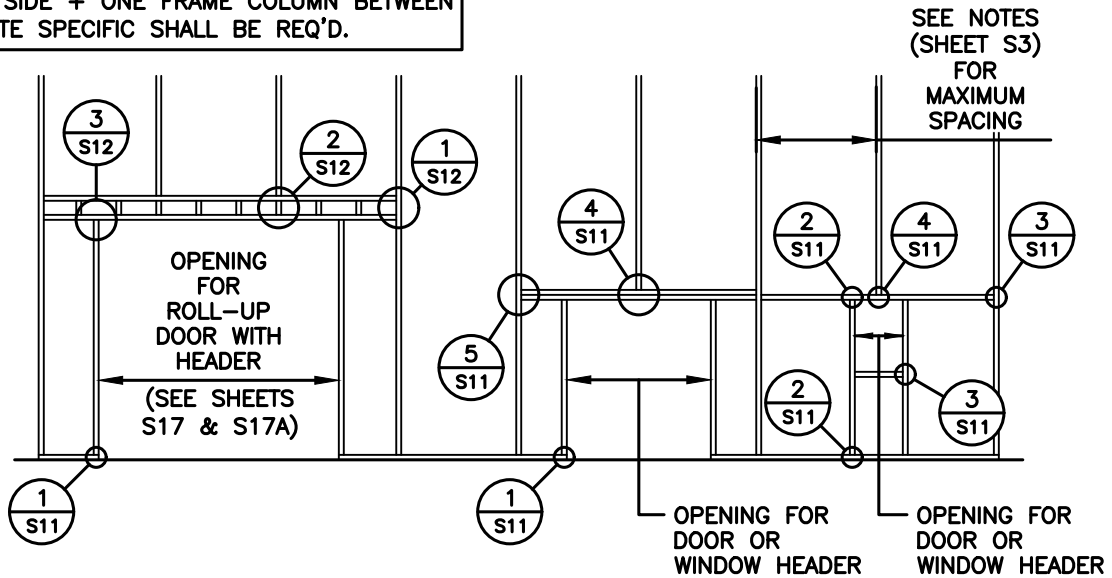
BOX EAVE RAFTER / SIDE WALL OPENINGS FRAMING

NOTE:
 ROLL UP DOORS SHALL HAVE ONE JAMB
 EACH SIDE + ONE FRAME COLUMN BETWEEN
 OR SITE SPECIFIC SHALL BE REQ'D.



TYPICAL SIDE WALL OPENING FRAMING SECTION

NOTE:
 ROLL UP DOORS SHALL HAVE ONE JAMB
 EACH SIDE + ONE FRAME COLUMN BETWEEN
 OR SITE SPECIFIC SHALL BE REQ'D.



TYPICAL SIDE WALL OPENING FRAMING SECTION



TAYLOR & VIOLA
 STRUCTURAL ENGINEERS
 P.O.B. 2616 HICKORY NORTH CAROLINA
 TELE: 828-328-6331 FAX: 828-322-1801
 WWW.TAYLORVIOLA.COM

JCMT Associates, PLLC
 211 Stone Drive, Pilot Mountain, NC 27041
 Telephone: (336) 399-6277

VI.0

SELECT STEEL
 BUILDINGS, INC.

2745 STATESVILLE RD.
 WILKESBORO, NORTH CAROLINA 28697
 TELE: 366-973-0721

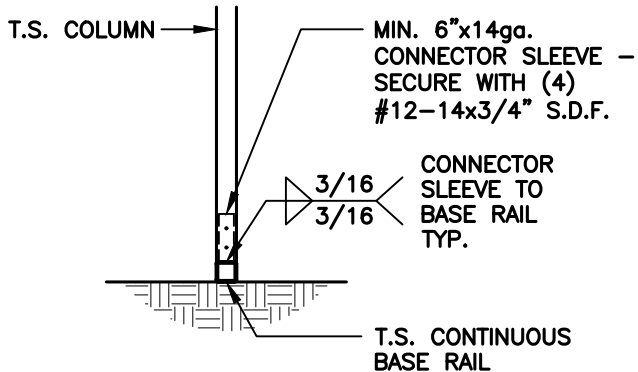
DRAWN BY:
 BKS

PROJECT NO:
 24-511

DATE:
 05.23.24

SHEET NO:
S9A

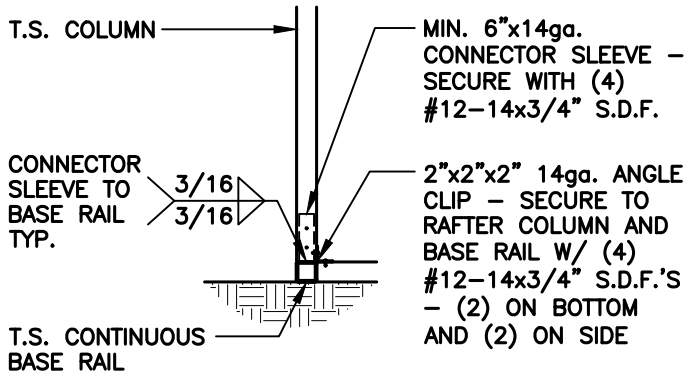
BASE RAIL CONNECTION DETAILS



1
COLUMN / BASE RAIL
CONNECTION DETAIL

S10

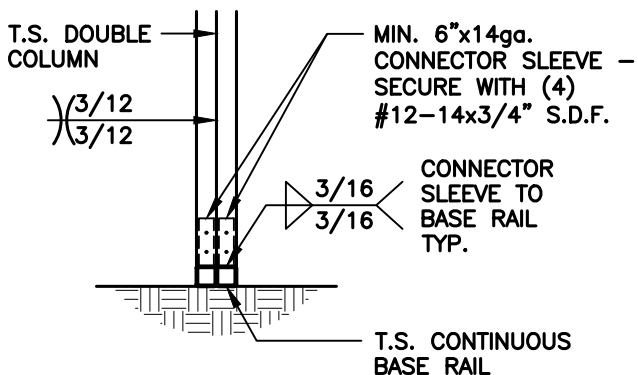
SCALE: 1/2" = 1'-0"



1A
END COLUMN / BASE RAIL
CONNECTION DETAIL

S10

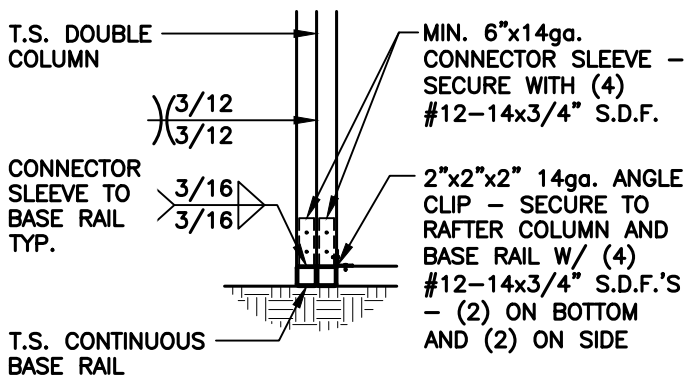
SCALE: 1/2" = 1'-0"



2
COLUMN / BASE RAIL
CONNECTION DETAIL

S10

SCALE: 1/2" = 1'-0"



2A
END COLUMN / BASE RAIL
CONNECTION DETAIL

S10

SCALE: 1/2" = 1'-0"



TAYLOR & VIOLA
STRUCTURAL ENGINEERS
P.O.B. 2616 HICKORY NORTH CAROLINA
TELE: 828-328-6331 FAX: 828-322-1801
WWW.TAYLORVIOLA.COM

JCMT Associates, PLLC
211 Stone Drive, Pilot Mountain, NC 27041
Telephone: (336) 399-6277

VI.0

SELECT STEEL
BUILDINGS, INC.

2745 STATESVILLE RD.
WILKESBORO, NORTH CAROLINA 28697
TELE: 366-973-0721

DRAWN BY:
BKS

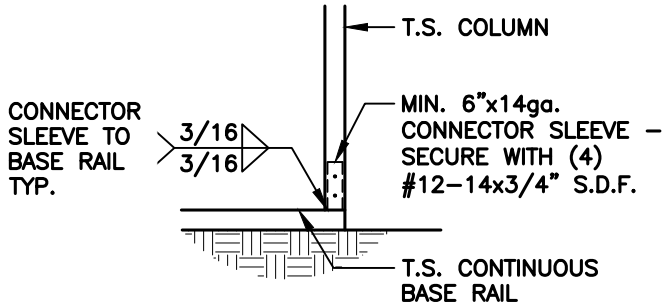
PROJECT NO:
24-511

DATE:
05.23.24

SHEET NO:
S10

NOTE: THESE DRAWINGS ARE VALID FOR (1) CALENDER YEAR AFTER THE ISSUE DATE LISTED ON THIS SHEET.

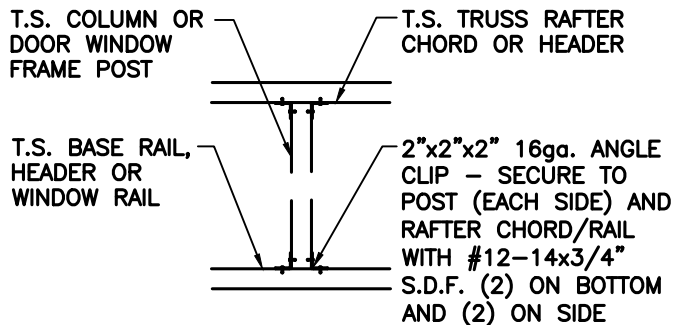
T.S. OPENING CONNECTION DETAILS



COLUMN / BASE RAIL CONNECTION DETAIL

1
S11

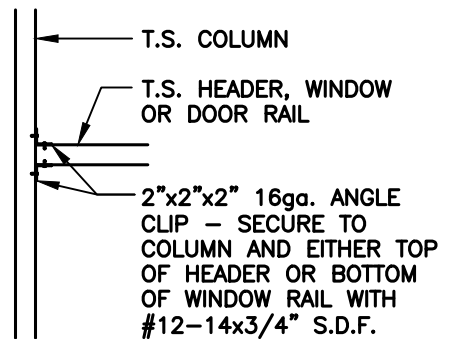
SCALE: 1/2" = 1'-0"



TRUSS / HEADER TO POST CONNECTION DETAIL

2
S11

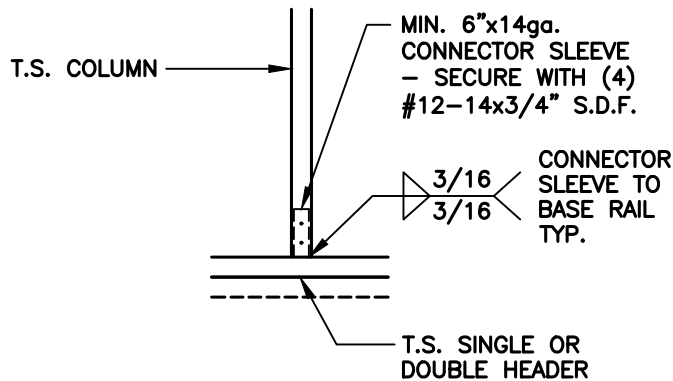
SCALE: 1/2" = 1'-0"



HEADER / WINDOW OR DOOR RAIL TO POST CONNECTION DETAIL

3
S11

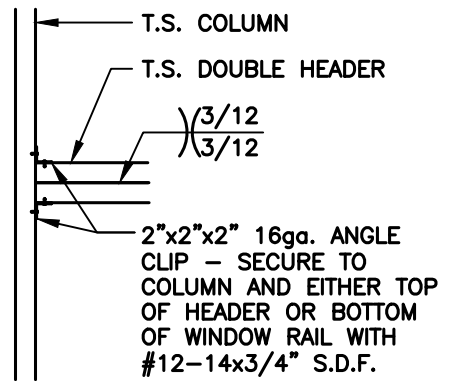
SCALE: 1/2" = 1'-0"



COLUMN / DOUBLE HEADER CONNECTION DETAIL

4
S11

SCALE: 1/2" = 1'-0"



DOUBLE HEADER / COLUMN CONNECTION DETAIL

5
S11

SCALE: 1/2" = 1'-0"

TAYLOR & VIOLA
STRUCTURAL ENGINEERS
P.O.B. 2616 HICKORY NORTH CAROLINA
TELE: 828-328-6331 FAX: 828-322-1801
WWW.TAYLORVIOLA.COM

JCMT Associates, PLLC
211 Stone Drive, Pilot Mountain, NC 27041
Telephone: (336) 399-6277

VI.0

SELECT STEEL
BUILDINGS, INC.

2745 STATESVILLE RD.
WILKESBORO, NORTH CAROLINA 28697
TELE: 366-973-0721

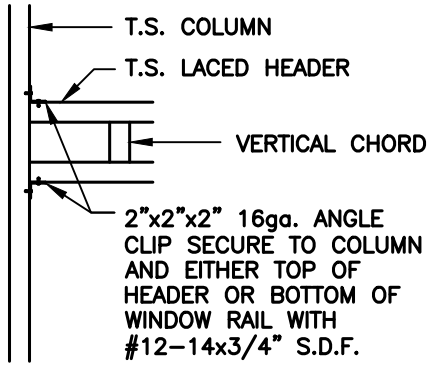
DRAWN BY:
BKS

PROJECT NO:
24-511

DATE:
05.23.24

SHEET NO:
S11

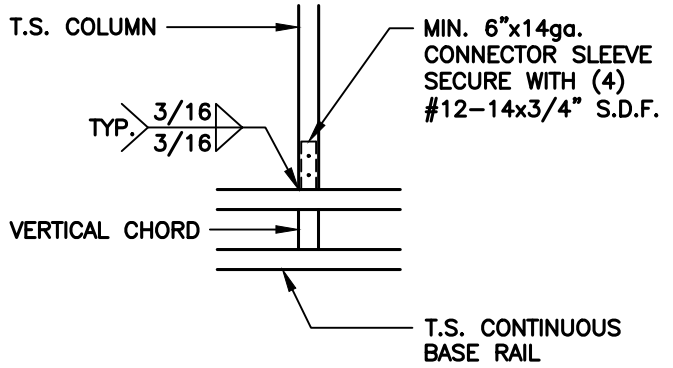
T.S. OPENING CONNECTION DETAILS



1
COLUMN / LACED HEADER
CONNECTION DETAIL

S12

SCALE: 1/2" = 1'-0"



2
LACED HEADER / COLUMN
CONNECTION DETAIL

S12

SCALE: 1/2" = 1'-0"



TAYLOR & VIOLA
STRUCTURAL ENGINEERS
P.O.B. 2616 HICKORY NORTH CAROLINA
TELE: 828-328-6331 FAX: 828-322-1801
WWW.TAYLORVIOLA.COM

JCMT Associates, PLLC
211 Stone Drive, Pilot Mountain, NC 27041
Telephone: (336) 399-6277

VI.0

SELECT STEEL
BUILDINGS, INC.

2745 STATESVILLE RD.
WILKESBORO, NORTH CAROLINA 28697
TELE: 366-973-0721

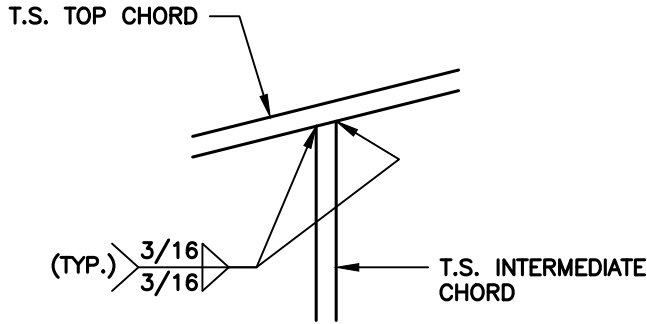
DRAWN BY:
BKS

PROJECT NO:
24-511

DATE:
05.23.24

SHEET NO:
S12

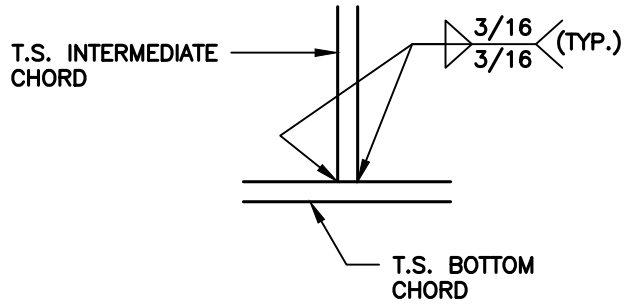
TRUSS CONNECTION DETAILS



1
INTERMEDIATE CHORD / TOP CHORD CONNECTION DETAIL

S13

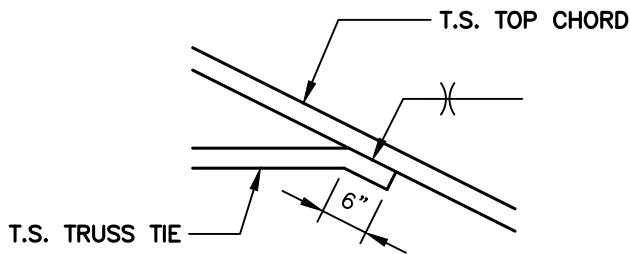
SCALE: 1/2" = 1'-0"



2
INTERMEDIATE CHORD / BOTTOM CHORD CONNECTION DETAIL

S13

SCALE: 1/2" = 1'-0"



3
TRUSS TIE / TOP CHORD CONNECTION DETAIL

S13

SCALE: 1/2" = 1'-0"



TAYLOR & VIOLA
STRUCTURAL ENGINEERS
P.O.B. 2616 HICKORY NORTH CAROLINA
TELE: 828-328-6331 FAX: 828-322-1801
WWW.TAYLORVIOLA.COM

JCMT Associates, PLLC
211 Stone Drive, Pilot Mountain, NC 27041
Telephone: (336) 399-6277

VI.0

SELECT STEEL
BUILDINGS, INC.

2745 STATESVILLE RD.
WILKESBORO, NORTH CAROLINA 28697
TELE: 366-973-0721

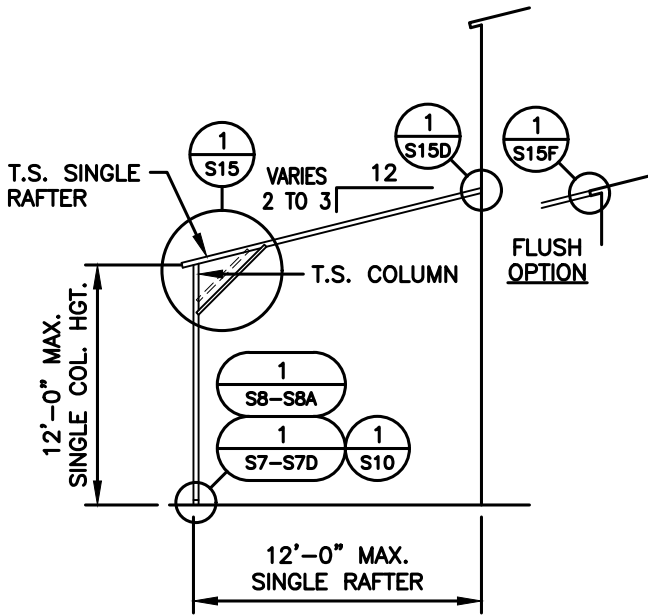
DRAWN BY:
BKS

PROJECT NO:
24-511

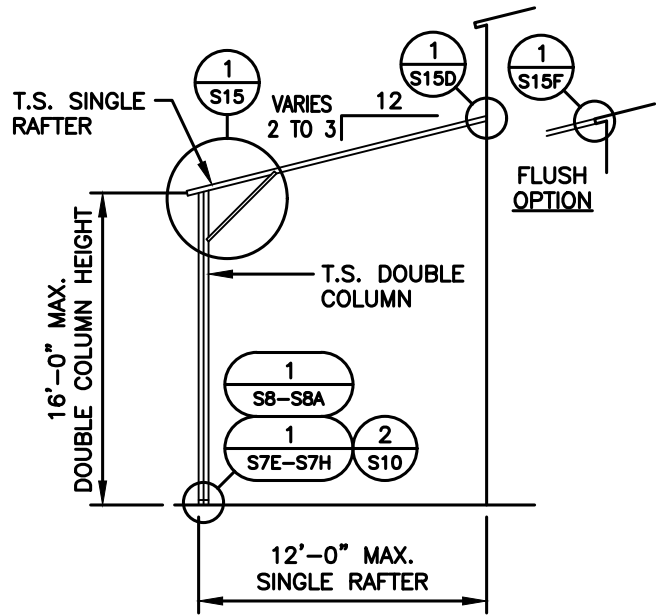
DATE:
05.23.24

SHEET NO:
S13

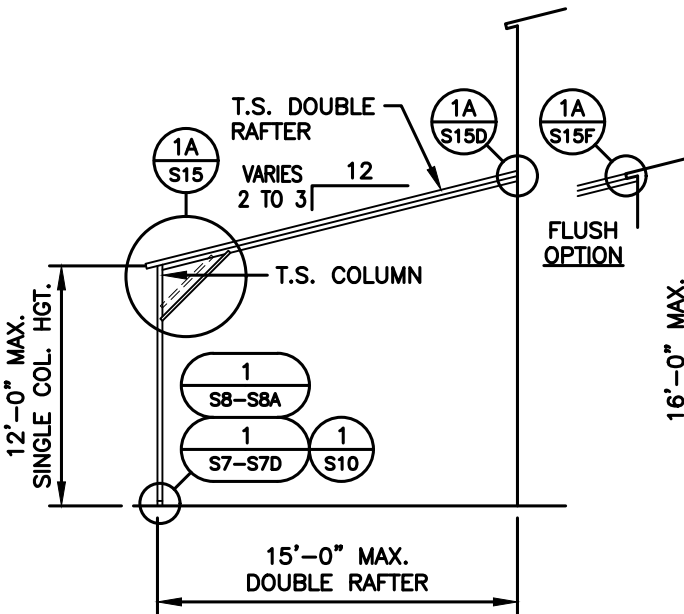
BOX EVE / SINGLE & DOUBLE RAFTER - LEAN-TO OPTIONS



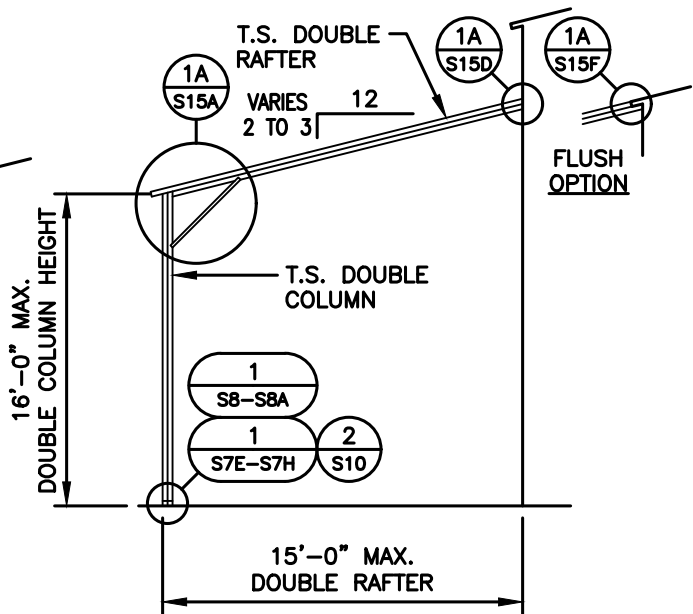
**SINGLE RAFTER / SINGLE COLUMN
LEAN-TO FRAMING SECTION**



**SINGLE RAFTER / DOUBLE COLUMN
LEAN-TO FRAMING SECTION**



**DOUBLE RAFTER / SINGLE COLUMN
LEAN-TO FRAMING SECTION**



**DOUBLE RAFTER / DOUBLE COLUMN
LEAN-TO FRAMING SECTION**

TAYLOR & VIOLA
STRUCTURAL ENGINEERS
P.O.B. 2616 HICKORY NORTH CAROLINA
TELE: 828-328-6331 FAX: 828-322-1801
WWW.TAYLORVIOLA.COM

JCMT Associates, PLLC
211 Stone Drive, Pilot Mountain, NC 27041
Telephone: (336) 399-6277

V1.0

SELECT STEEL
BUILDINGS, INC.

2745 STATESVILLE RD.
WILKESBORO, NORTH CAROLINA 28697
TELE: 366-973-0721

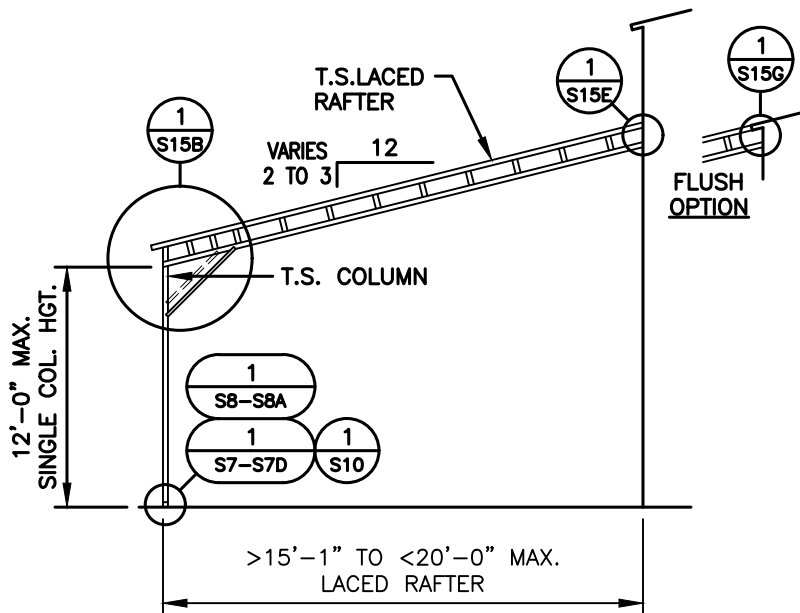
DRAWN BY:
BKS

DATE:
05.23.24

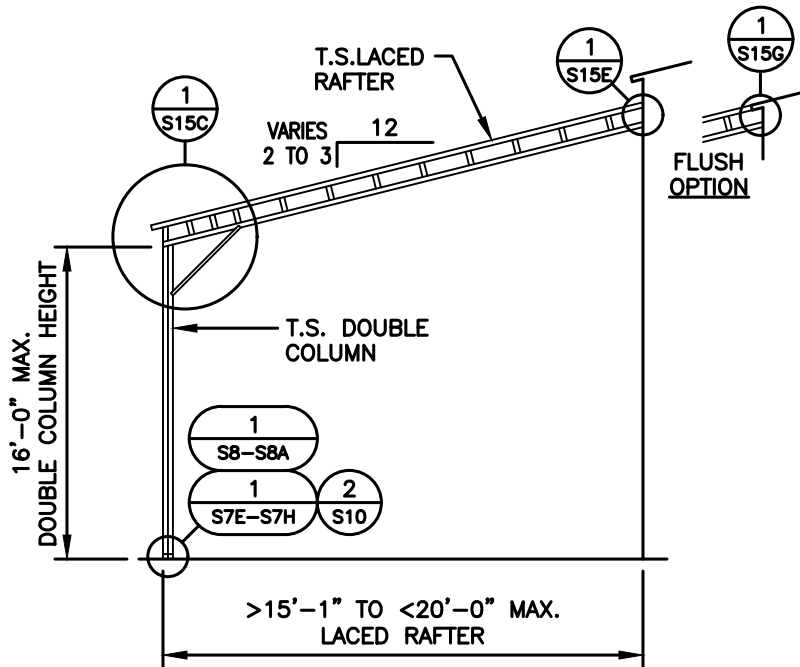
PROJECT NO:
24-511

SHEET NO:
S14

BOX EVE / LACED RAFTER - LEAN-TO OPTIONS



**LACED RAFTER / SINGLE COLUMN
LEAN-TO FRAMING SECTION**



**LACED RAFTER / DOUBLE COLUMN
LEAN-TO FRAMING SECTION**



TAYLOR & VIOLA
STRUCTURAL ENGINEERS
P.O.B. 2616 HICKORY NORTH CAROLINA
TELE: 828-328-6331 FAX: 828-322-1801
WWW.TAYLORVIOLA.COM

JCMT Associates, PLLC
211 Stone Drive, Pilot Mountain, NC 27041
Telephone: (336) 399-6277

VI.0

SELECT STEEL
BUILDINGS, INC.

2745 STATESVILLE RD.
WILKESBORO, NORTH CAROLINA 28697
TELE: 366-973-0721

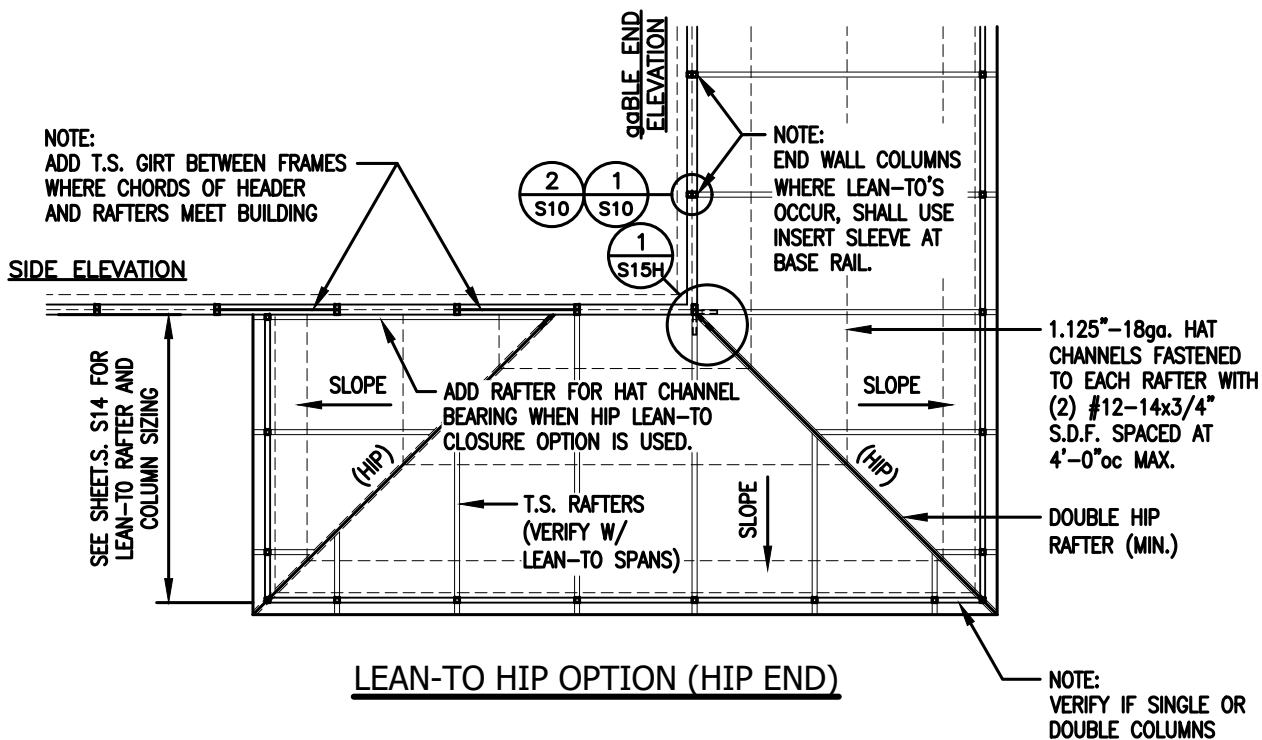
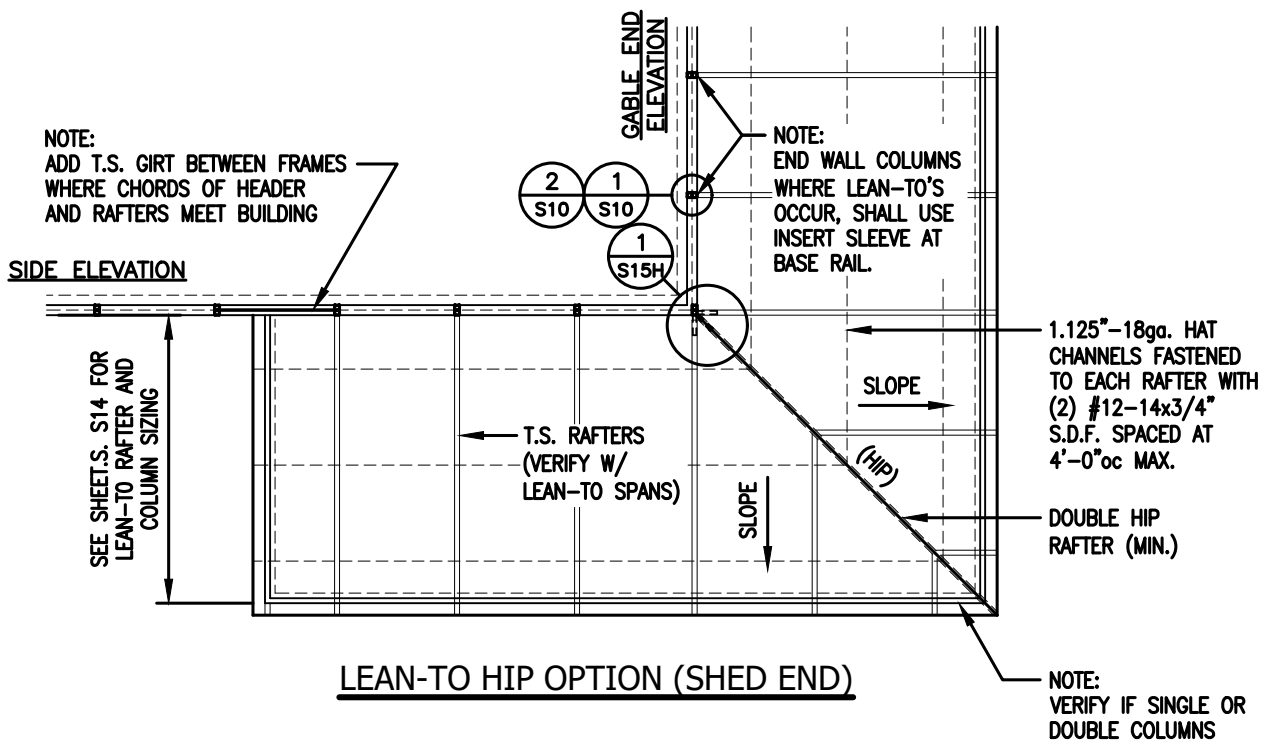
DRAWN BY:
BKS

PROJECT NO:
24-511

DATE:
05.23.24

SHEET NO:
S14A

LEAN-TO 'HIP' OPTIONS



TAYLOR & VIOLA
STRUCTURAL ENGINEERS
P.O.B. 2616 HICKORY NORTH CAROLINA
TELE: 828-328-6331 FAX: 828-322-1801
WWW.TAYLORVIOLA.COM

JCMT Associates, PLLC
211 Stone Drive, Pilot Mountain, NC 27041
Telephone: (336) 399-6277

VI.0

**SELECT STEEL
BUILDINGS, INC.**

2745 STATESVILLE RD.
WILKESBORO, NORTH CAROLINA 28697
TELE: 366-973-0721

DRAWN BY:
BKS

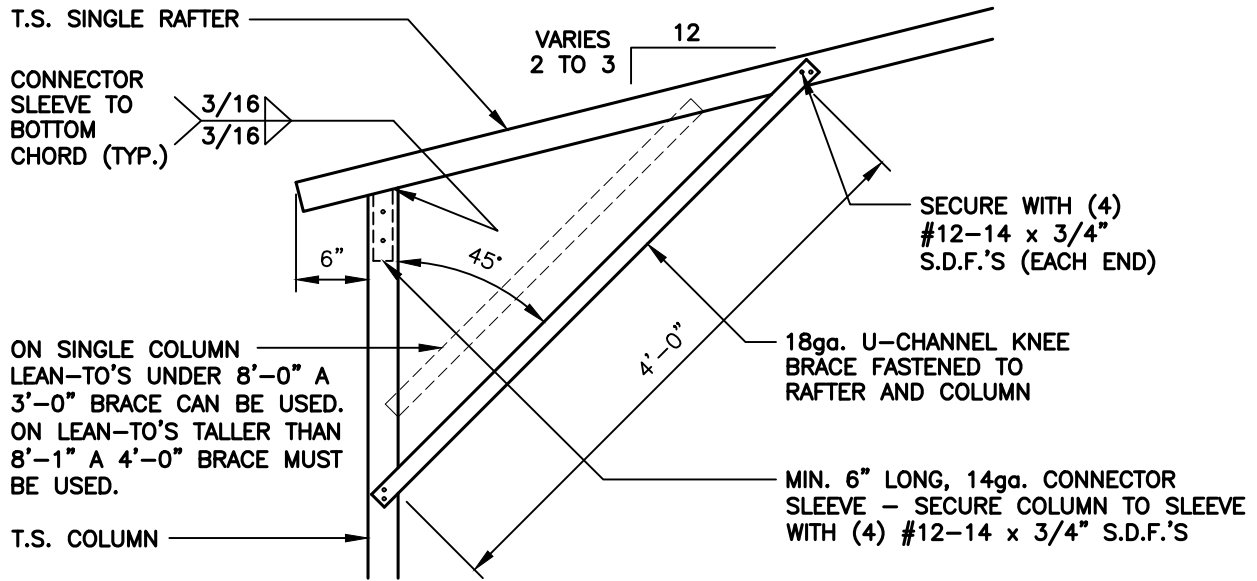
PROJECT NO:
24-511

DATE:
05.23.24

SHEET NO:
S14B

NOTE: THESE DRAWINGS ARE VALID FOR (1) CALENDER YEAR AFTER THE ISSUE DATE LISTED ON THIS SHEET.

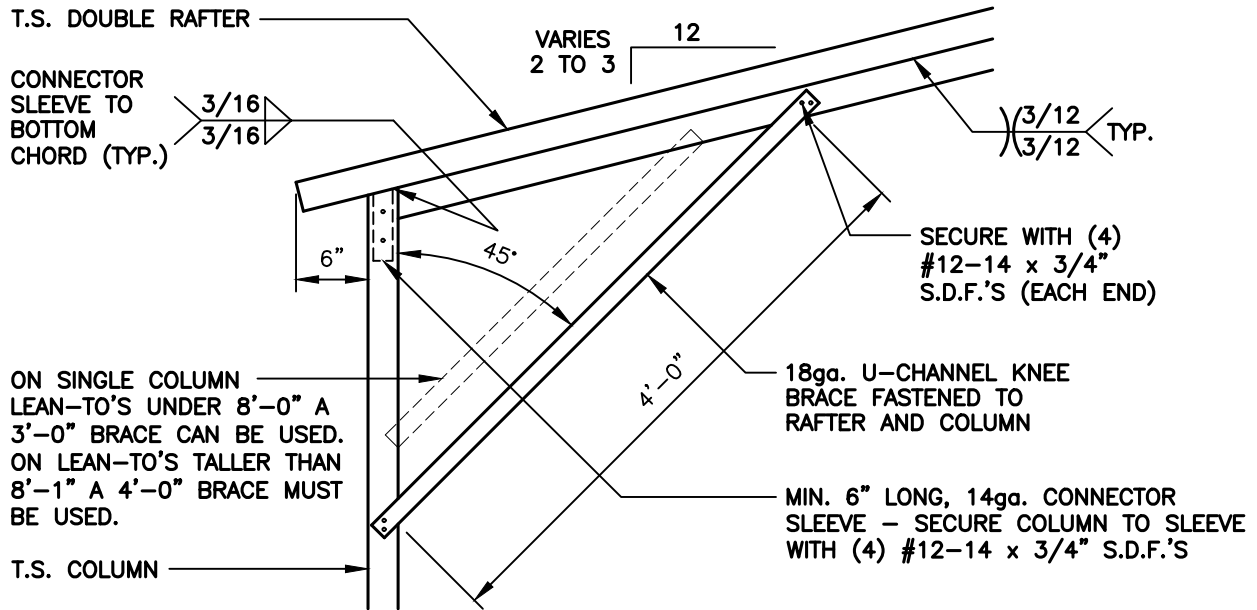
LEAN-TO CONNECTION DETAILS - SINGLE COLUMN



LEAN-TO SINGLE RAFTER / SINGLE COLUMN CONNECTION DETAIL

1
S15

SCALE: 3/4" = 1'-0"



LEAN-TO DOUBLE RAFTER / SINGLE COLUMN CONNECTION DETAIL

1A
S15

SCALE: 3/4" = 1'-0"



TAYLOR & VIOLA
STRUCTURAL ENGINEERS
P.O.B. 2616 HICKORY NORTH CAROLINA
TELE: 828-328-6331 FAX: 828-322-1801
WWW.TAYLORVIOLA.COM

JCMT Associates, PLLC
211 Stone Drive, Pilot Mountain, NC 27041
Telephone: (336) 399-6277

VI.0

SELECT STEEL
BUILDINGS, INC.

2745 STATESVILLE RD.
WILKESBORO, NORTH CAROLINA 28697
TELE: 366-973-0721

DRAWN BY:
BKS

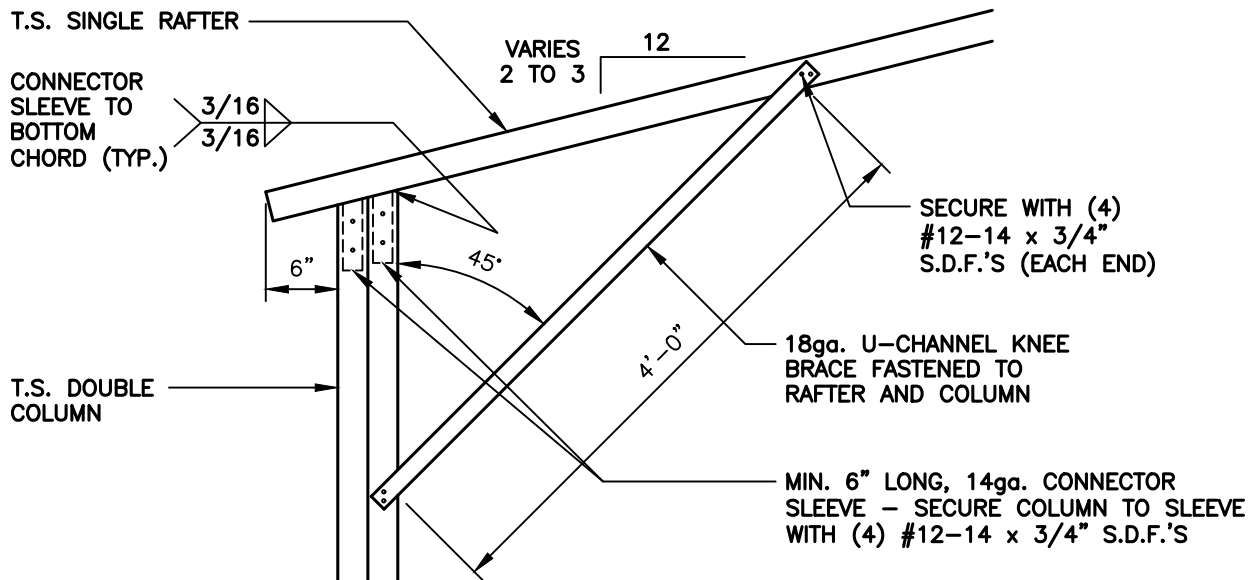
DATE:
05.23.24

PROJECT NO:
24-511

SHEET NO:
S15

NOTE: THESE DRAWINGS ARE VALID FOR (1) CALENDER YEAR AFTER THE ISSUE DATE LISTED ON THIS SHEET.

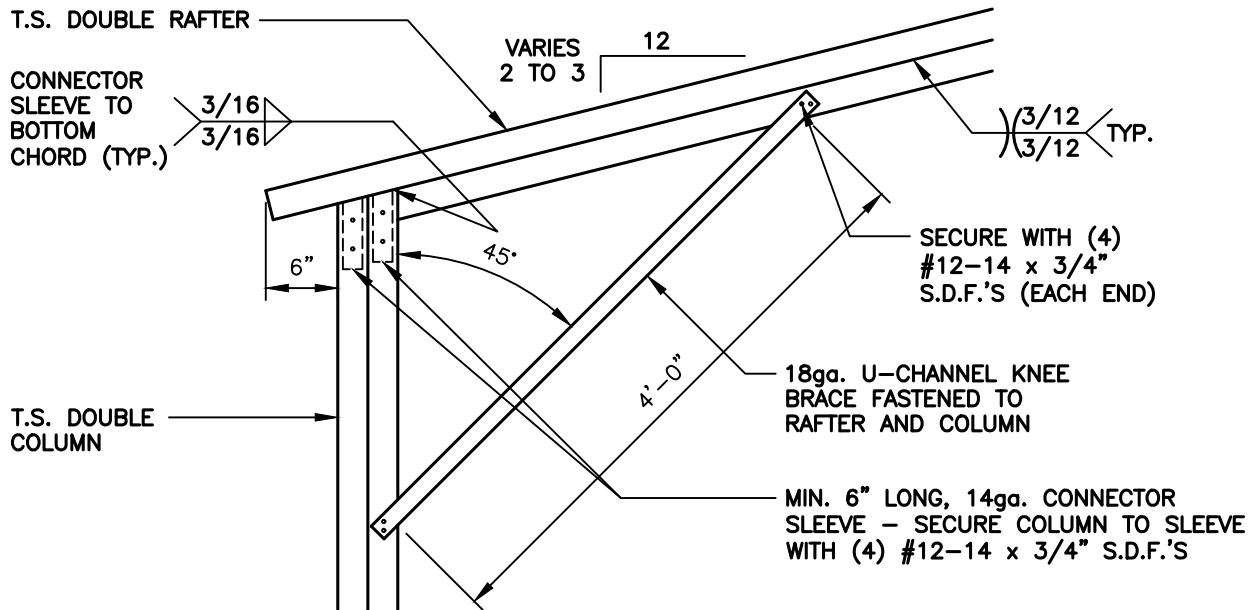
LEAN-TO CONNECTION DETAILS - DOUBLE COLUMN



LEAN-TO SINGLE RAFTER / DOUBLE COLUMN CONNECTION DETAIL

1
S15A

SCALE: 3/4" = 1'-0"



LEAN-TO DOUBLE RAFTER / DOUBLE COLUMN CONNECTION DETAIL

1A
S15A

SCALE: 3/4" = 1'-0"



TAYLOR & VIOLA
STRUCTURAL ENGINEERS
P.O.B. 2616 HICKORY NORTH CAROLINA
TELE: 828-328-6331 FAX: 828-322-1801
WWW.TAYLORVIOLA.COM

JCMT Associates, PLLC
211 Stone Drive, Pilot Mountain, NC 27041
Telephone: (336) 399-6277

VI.0

SELECT STEEL
BUILDINGS, INC.

2745 STATESVILLE RD.
WILKESBORO, NORTH CAROLINA 28697
TELE: 366-973-0721

DRAWN BY:
BKS

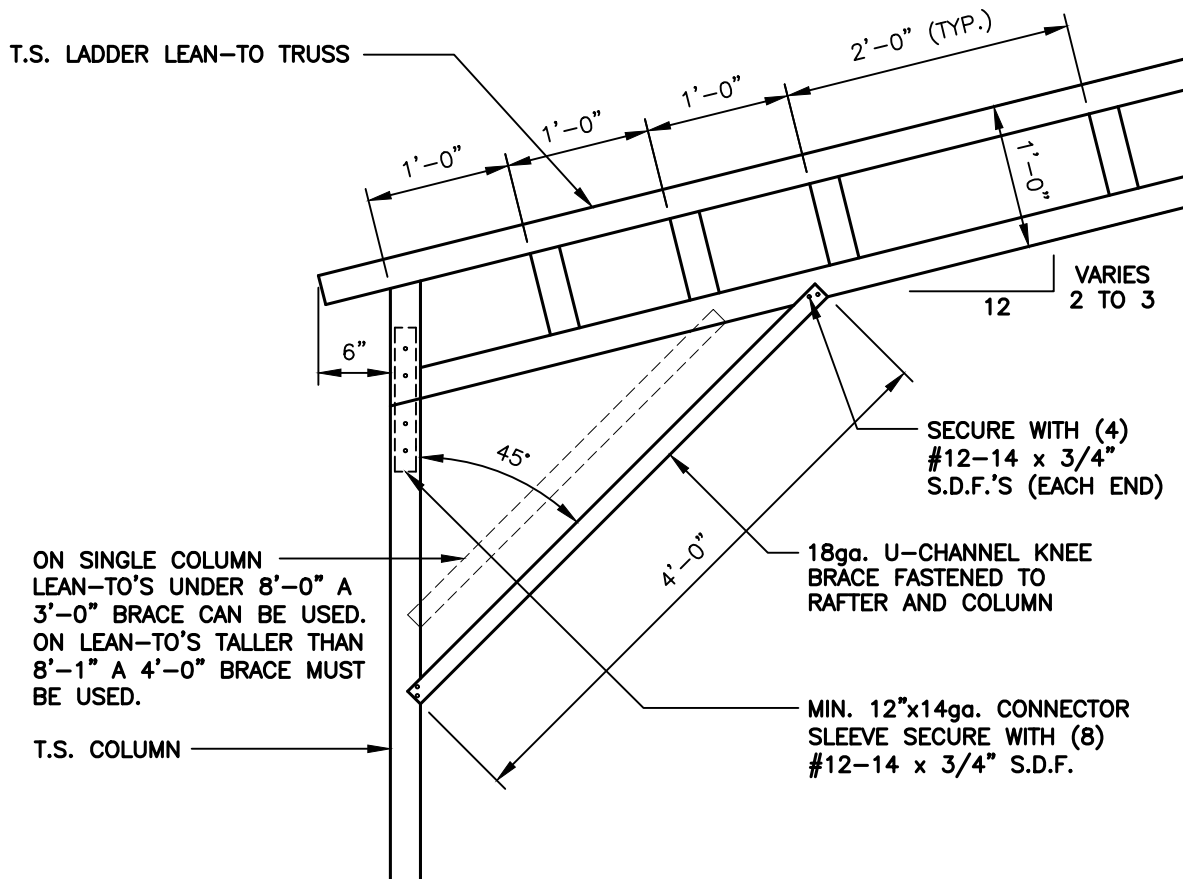
PROJECT NO:
24-511

DATE:
05.23.24

SHEET NO:
S15A

NOTE: THESE DRAWINGS ARE VALID FOR (1) CALENDER YEAR AFTER THE ISSUE DATE LISTED ON THIS SHEET.

LEAN-TO CONNECTION DETAILS - LACED RAFTER / SINGLE COLUMN



LEAN-TO LACED RAFTER / SINGLE COLUMN
CONNECTION DETAIL

1
S15B

SCALE: 3/4" = 1'-0"



TAYLOR & VIOLA
STRUCTURAL ENGINEERS
P.O.B. 2616 HICKORY NORTH CAROLINA
TELE: 828-328-6331 FAX: 828-322-1801
WWW.TAYLORVIOLA.COM

JCMT Associates, PLLC
211 Stone Drive, Pilot Mountain, NC 27041
Telephone: (336) 399-6277

VI.0

SELECT STEEL
BUILDINGS, INC.

2745 STATESVILLE RD.
WILKESBORO, NORTH CAROLINA 28697
TELE: 366-973-0721

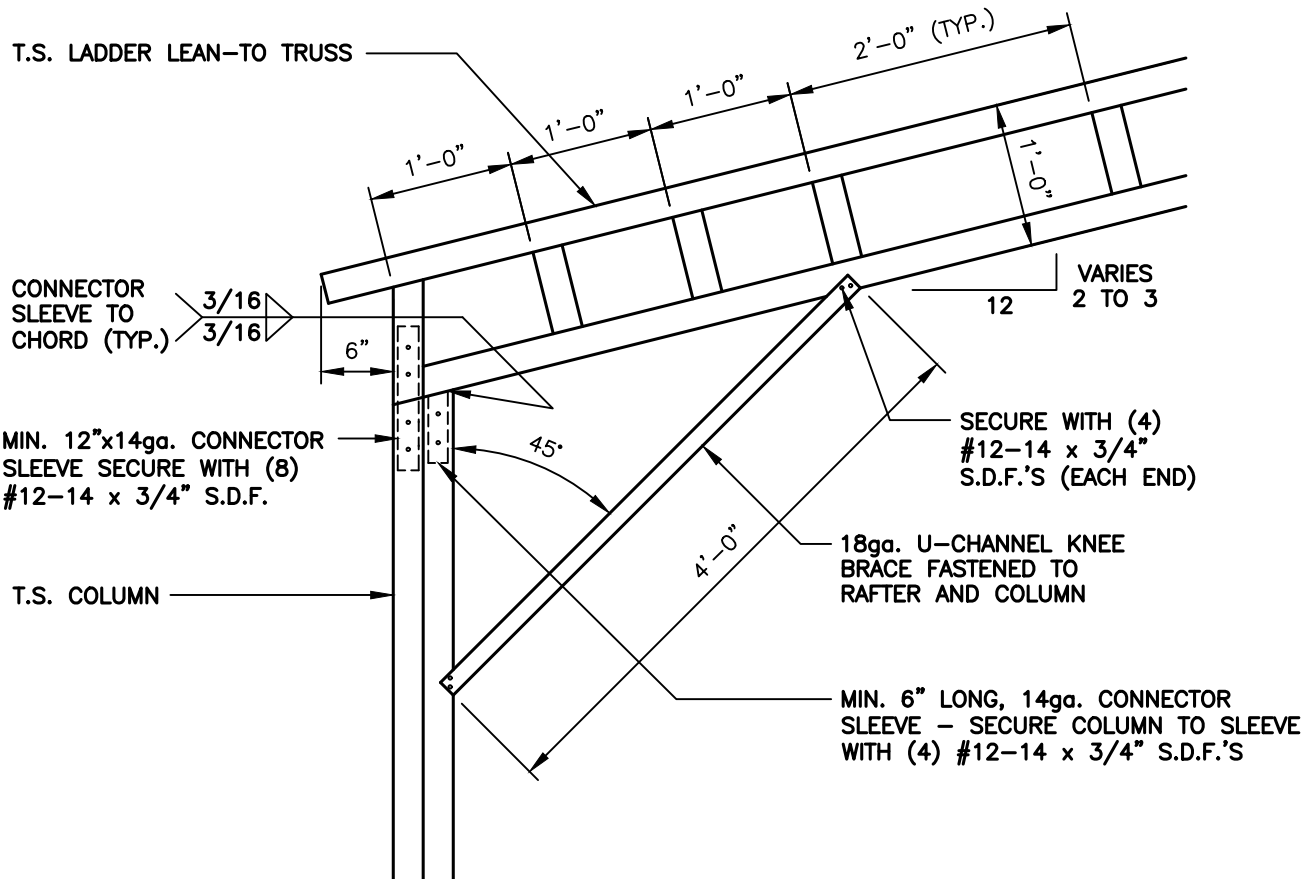
DRAWN BY:
BKS

PROJECT NO:
24-511

DATE:
05.23.24

SHEET NO:
S15B

LEAN-TO CONNECTION DETAILS - LACED RAFTER / DOUBLE COLUMN



LEAN-TO LACED RAFTER / DOUBLE COLUMN CONNECTION DETAIL

1
S15C

SCALE: 3/4" = 1'-0"



TAYLOR & VIOLA
STRUCTURAL ENGINEERS
P.O.B. 2616 HICKORY NORTH CAROLINA
TELE: 828-328-6331 FAX: 828-322-1801
WWW.TAYLORVIOLA.COM

JCMT Associates, PLLC
211 Stone Drive, Pilot Mountain, NC 27041
Telephone: (336) 399-6277

VI.0

SELECT STEEL
BUILDINGS, INC.

2745 STATESVILLE RD.
WILKESBORO, NORTH CAROLINA 28697
TELE: 366-973-0721

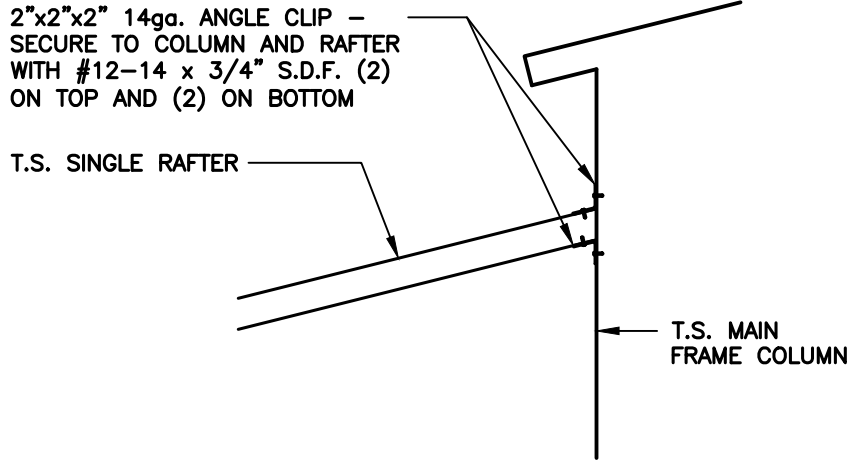
DRAWN BY:
BKS

PROJECT NO:
24-511

DATE:
05.23.24

SHEET NO:
S15C

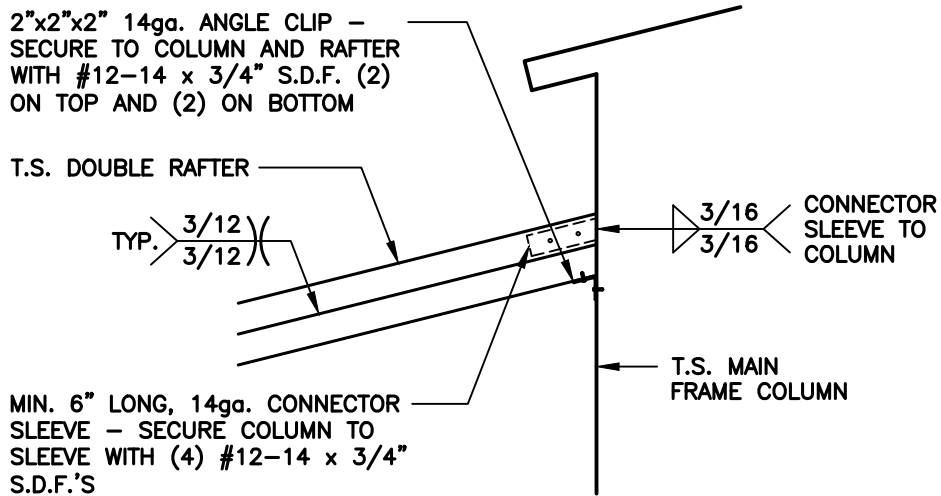
LEAN-TO / MAIN FRAME CONNECTION DETAILS



LEAN-TO SINGLE RAFTER / BUILDING FRAME
CONNECTION DETAIL

1
S15D

SCALE: 3/4" = 1'-0"



LEAN-TO DOUBLE RAFTER / BUILDING FRAME
CONNECTION DETAIL

1A
S15D

SCALE: 3/4" = 1'-0"



TAYLOR & VIOLA
STRUCTURAL ENGINEERS
P.O.B. 2616 HICKORY NORTH CAROLINA
TELE: 828-328-6331 FAX: 828-322-1801
WWW.TAYLORVIOLA.COM

JCMT Associates, PLLC
211 Stone Drive, Pilot Mountain, NC 27041
Telephone: (336) 399-6277

V1.0

SELECT STEEL
BUILDINGS, INC.

2745 STATESVILLE RD.
WILKESBORO, NORTH CAROLINA 28697
TELE: 366-973-0721

DRAWN BY:
BKS

PROJECT NO:
24-511

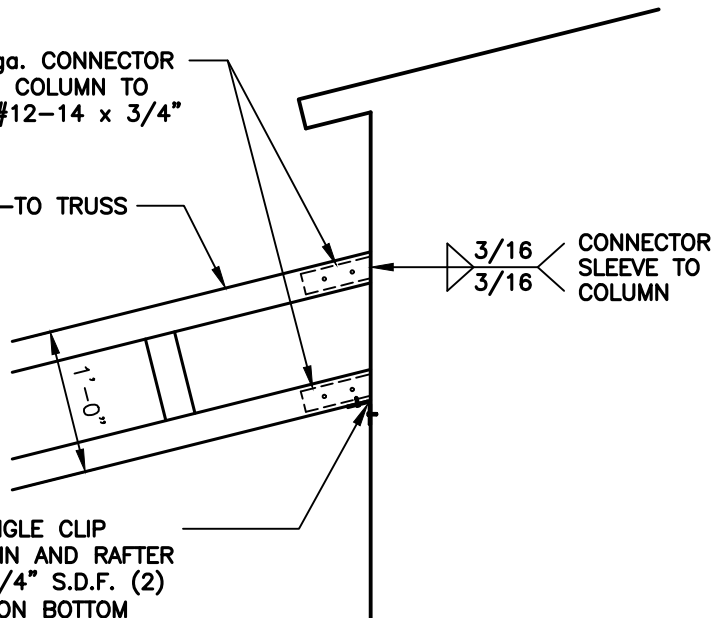
DATE:
05.23.24

SHEET NO:
S15D

LEAN-TO / MAIN FRAME CONNECTION DETAILS

MIN. 6" LONG, 14ga. CONNECTOR SLEEVE - SECURE COLUMN TO SLEEVE WITH (4) #12-14 x 3/4" S.D.F.'S

T.S. LADDER LEAN-TO TRUSS



LEAN-TO SINGLE RAFTER / BUILDING FRAME CONNECTION DETAIL

1
S15E

SCALE: 3/4" = 1'-0"



TAYLOR & VIOLA
STRUCTURAL ENGINEERS
P.O.B. 2616 HICKORY NORTH CAROLINA
TELE: 828-328-6331 FAX: 828-322-1801
WWW.TAYLORVIOLA.COM

JCMT Associates, PLLC
211 Stone Drive, Pilot Mountain, NC 27041
Telephone: (336) 399-6277

V1.0

SELECT STEEL
BUILDINGS, INC.

2745 STATESVILLE RD.
WILKESBORO, NORTH CAROLINA 28697
TELE: 366-973-0721

DRAWN BY:
BKS

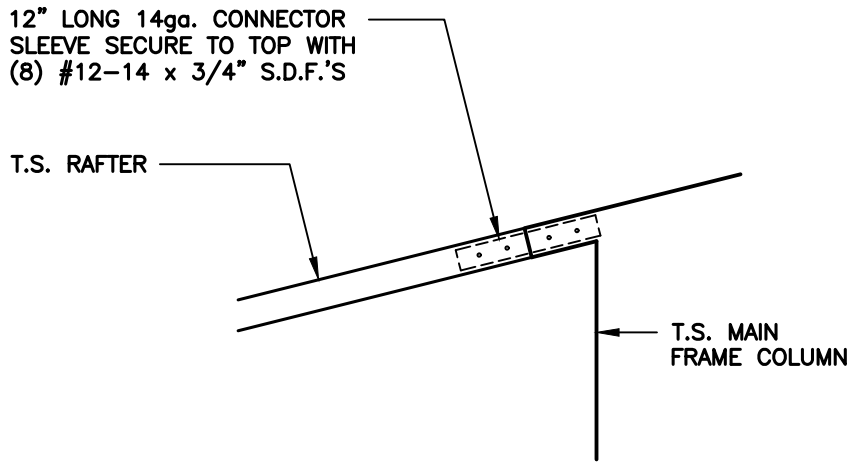
PROJECT NO:
24-511

DATE:
05.23.24

SHEET NO:
S15E

NOTE: THESE DRAWINGS ARE VALID FOR (1) CALENDER YEAR AFTER THE ISSUE DATE LISTED ON THIS SHEET.

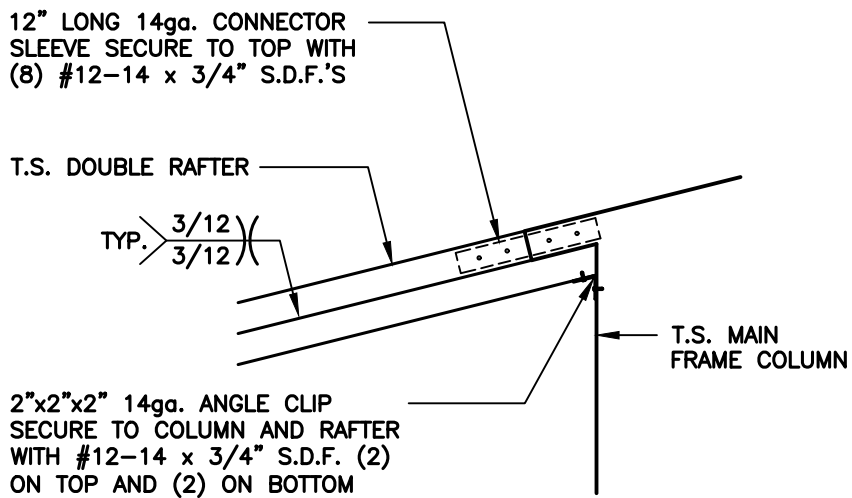
LEAN-TO / MAIN FRAME CONNECTION DETAILS



LEAN-TO SINGLE RAFTER / BUILDING FRAME
(FLUSH) CONNECTION DETAIL

1
S15F

SCALE: 3/4" = 1'-0"



LEAN-TO SINGLE RAFTER / BUILDING FRAME
(FLUSH) CONNECTION DETAIL

1A
S15F

SCALE: 3/4" = 1'-0"



TAYLOR & VIOLA
STRUCTURAL ENGINEERS
P.O.B. 2616 HICKORY NORTH CAROLINA
TELE: 828-328-6331 FAX: 828-322-1801
WWW.TAYLORVIOLA.COM

JCMT Associates, PLLC
211 Stone Drive, Pilot Mountain, NC 27041
Telephone: (336) 399-6277

VI.0

SELECT STEEL
BUILDINGS, INC.

2745 STATESVILLE RD.
WILKESBORO, NORTH CAROLINA 28697
TELE: 366-973-0721

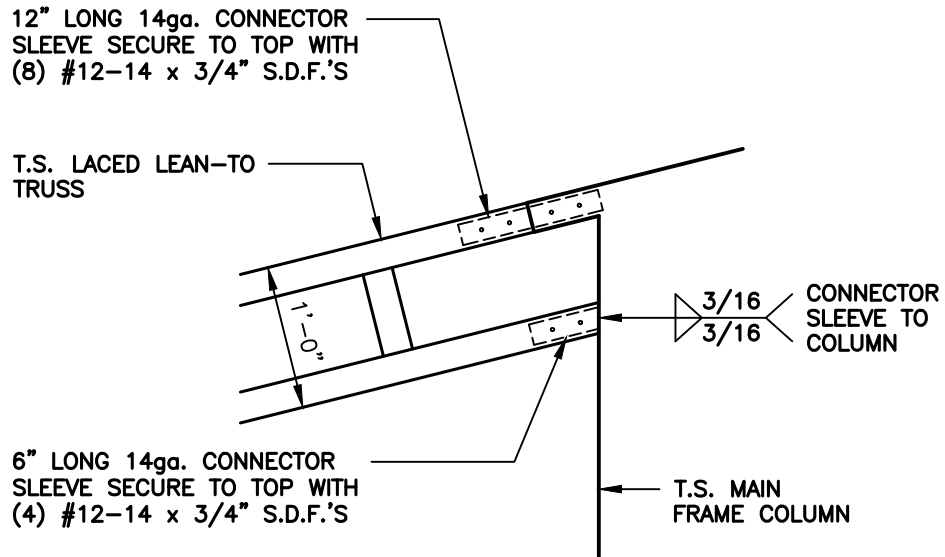
DRAWN BY:
BKS

PROJECT NO:
24-511

DATE:
05.23.24

SHEET NO:
S15F

LEAN-TO / MAIN FRAME CONNECTION DETAILS



LEAN-TO SINGLE RAFTER / BUILDING FRAME
(FLUSH) CONNECTION DETAIL

1
S15G

SCALE: 3/4" = 1'-0"



TAYLOR & VIOLA
STRUCTURAL ENGINEERS
P.O.B. 2616 HICKORY NORTH CAROLINA
TELE: 828-328-6331 FAX: 828-322-1801
WWW.TAYLORVIOLA.COM

JCMT Associates, PLLC
211 Stone Drive, Pilot Mountain, NC 27041
Telephone: (336) 399-6277

VI.0

SELECT STEEL
BUILDINGS, INC.

2745 STATESVILLE RD.
WILKESBORO, NORTH CAROLINA 28697
TELE: 366-973-0721

DRAWN BY:
BKS

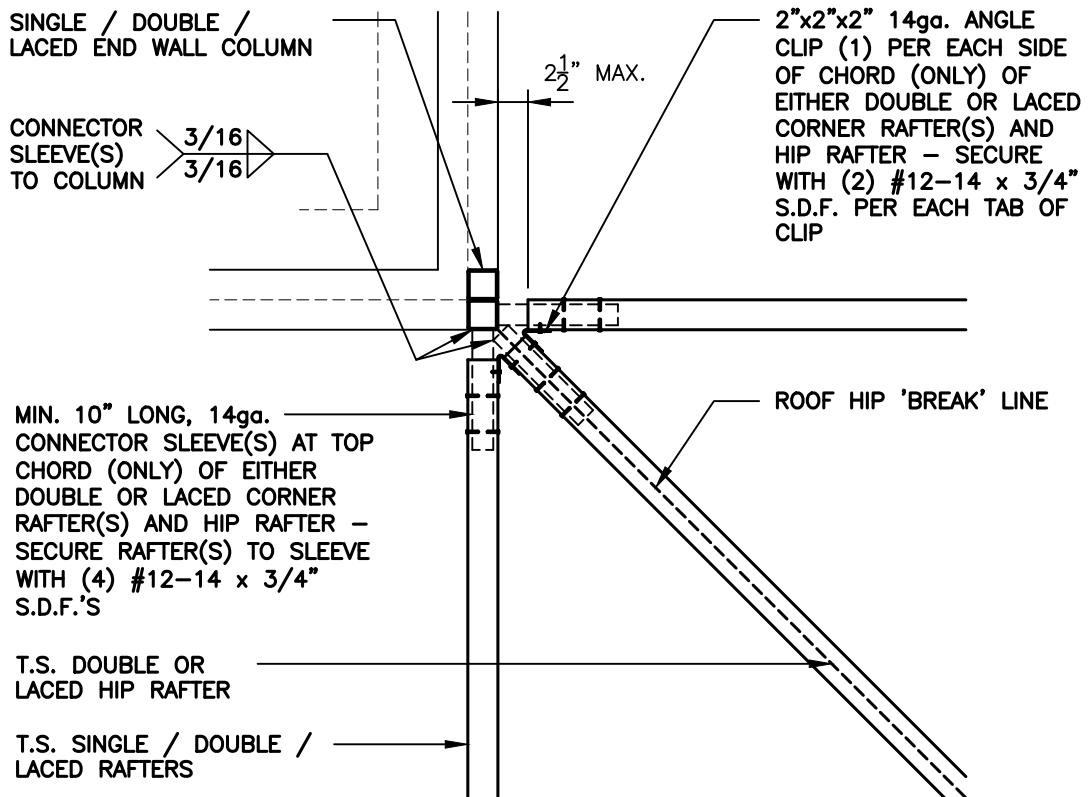
PROJECT NO:
24-511

DATE:
05.23.24

SHEET NO:
S15G

NOTE: THESE DRAWINGS ARE VALID FOR (1) CALENDER YEAR AFTER THE ISSUE DATE LISTED ON THIS SHEET.

END WALL COLUMN / HIP RAFTER CONNECTION DETAIL



END WALL COLUMN / HIP RAFTER CONNECTION DETAIL



SCALE: 3/4" = 1'-0"



TAYLOR & VIOLA
STRUCTURAL ENGINEERS
P.O.B. 2616 HICKORY NORTH CAROLINA
TELE: 828-328-6331 FAX: 828-322-1801
WWW.TAYLORVIOLA.COM

JCMT Associates, PLLC
211 Stone Drive, Pilot Mountain, NC 27041
Telephone: (336) 399-6277

VI.0

SELECT STEEL
BUILDINGS, INC.

2745 STATESVILLE RD.
WILKESBORO, NORTH CAROLINA 28697
TELE: 366-973-0721

DRAWN BY:
BKS

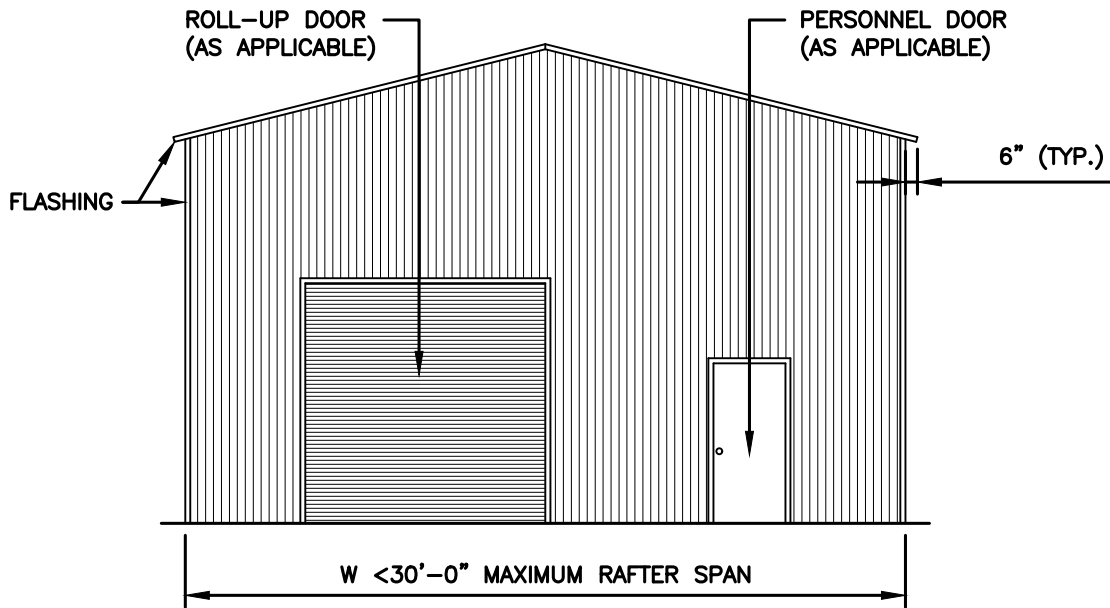
PROJECT NO:
24-511

DATE:
05.23.24

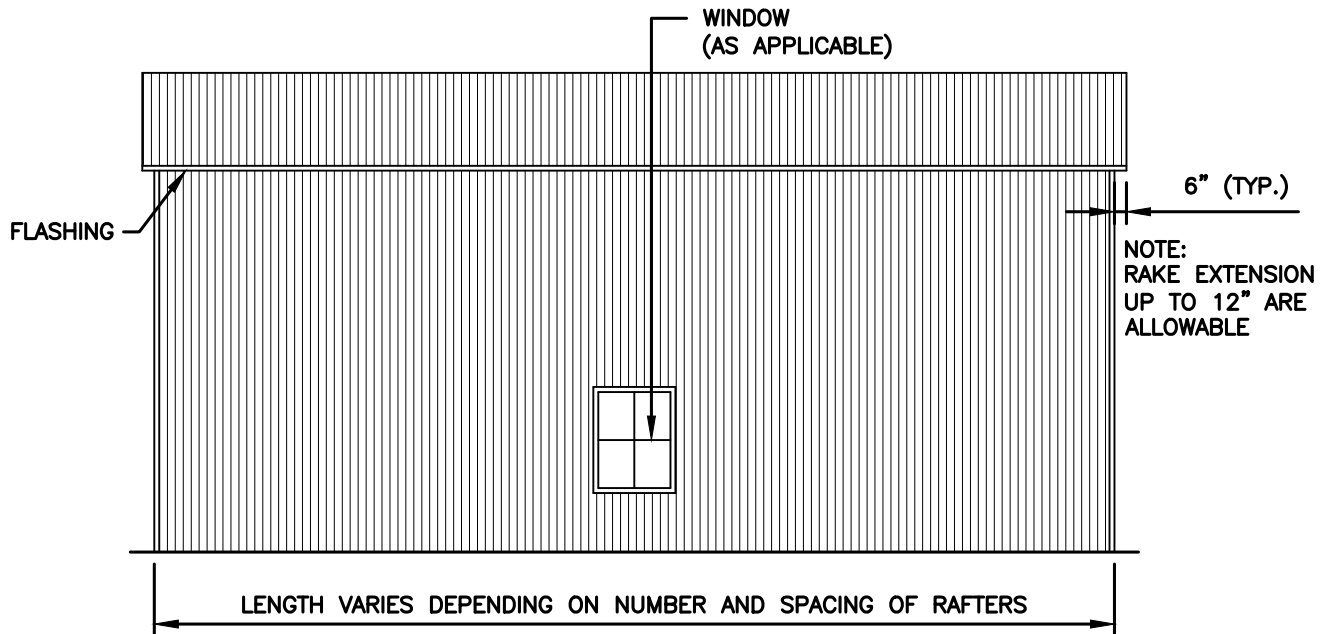
SHEET NO:
S15H

NOTE: THESE DRAWINGS ARE VALID FOR (1) CALENDER YEAR AFTER THE ISSUE DATE LISTED ON THIS SHEET.

VERTICAL ROOF / SIDING OPTION



TYPICAL END ELEVATION



TYPICAL SIDE ELEVATION



TAYLOR & VIOLA
 STRUCTURAL ENGINEERS
 P.O.B. 2616 HICKORY NORTH CAROLINA
 TELE: 828-328-6331 FAX: 828-322-1801
 WWW.TAYLORVIOLA.COM

JCMT Associates, PLLC
 211 Stone Drive, Pilot Mountain, NC 27041
 Telephone: (336) 399-6277

v1.0

SELECT STEEL
 BUILDINGS, INC.

2745 STATESVILLE RD.
 WILKESBORO, NORTH CAROLINA 28697
 TELE: 366-973-0721

DRAWN BY:
BKS

DATE:
 05.23.24

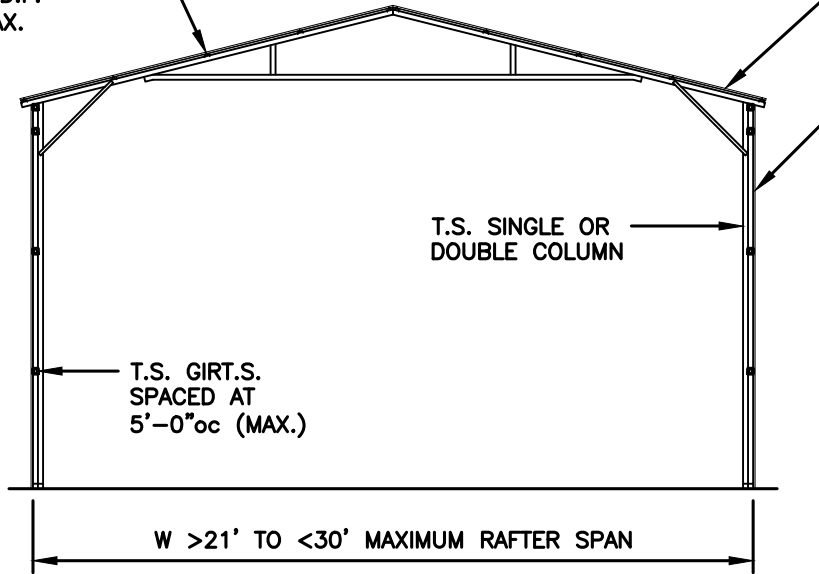
PROJECT NO:
 24-511

SHEET NO:
S16

VERTICAL ROOF / SIDING OPTION

1" MIN. - 18ga. HAT CHANNELS
FASTENED TO EACH RAFTER WITH
(2) #12-14 x 3/4" S.D.F.
SPACED AT 4'-0"oc MAX.

29ga. GALVANIZED METAL
ROOF AND WALL PANELS
FASTENED TO GIRTS AND
POST OR HAT CHANNELS



T.S. SINGLE OR
DOUBLE COLUMN

T.S. GIRT.S.
SPACED AT
5'-0"oc (MAX.)

W >21' TO <30' MAXIMUM RAFTER SPAN

TYPICAL SECTION VERTICAL ROOF / SIDING OPTION



TAYLOR & VIOLA
STRUCTURAL ENGINEERS
P.O.B. 2616 HICKORY NORTH CAROLINA
TELE: 828-328-6331 FAX: 828-322-1801
WWW.TAYLORVIOLA.COM

JCMT Associates, PLLC
211 Stone Drive, Pilot Mountain, NC 27041
Telephone: (336) 399-6277

VI.0

SELECT STEEL
BUILDINGS, INC.

2745 STATESVILLE RD.
WILKESBORO, NORTH CAROLINA 28697
TELE: 366-973-0721

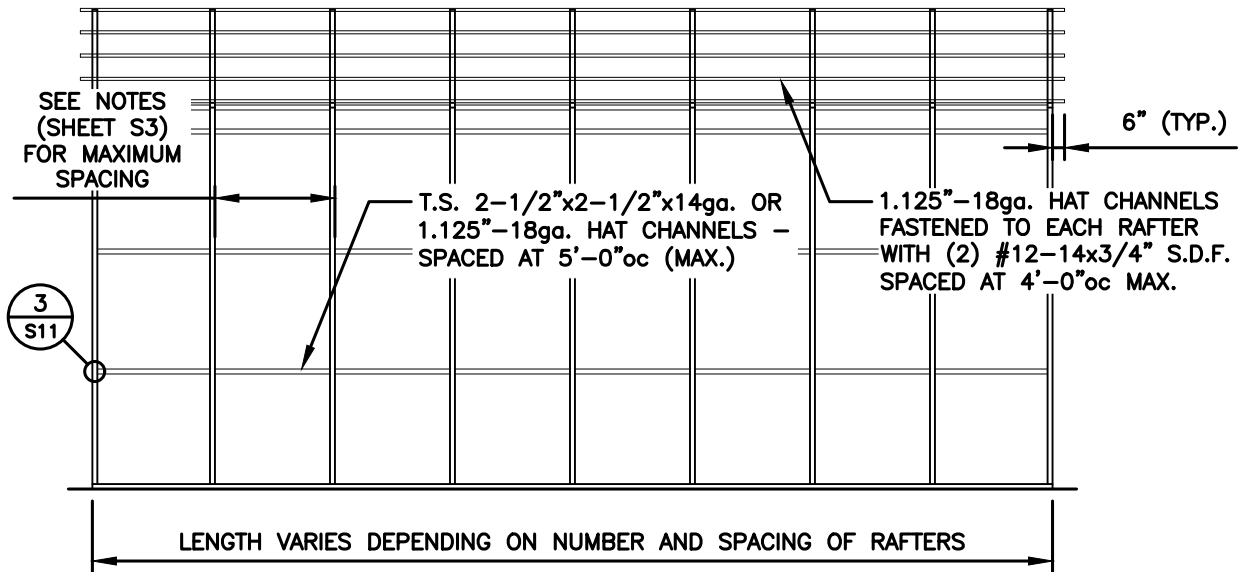
DRAWN BY:
BKS

PROJECT NO:
24-511

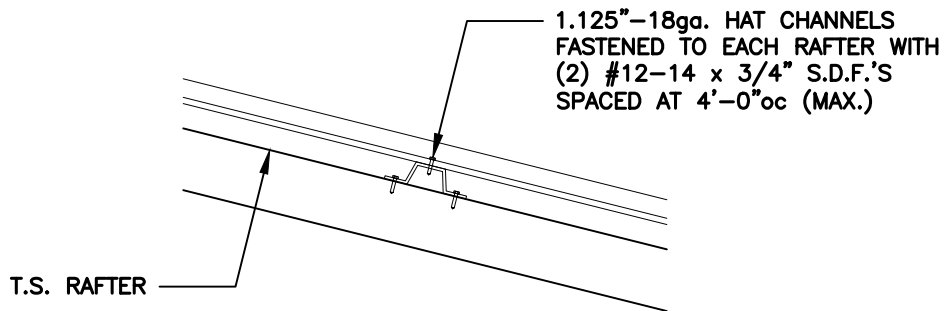
DATE:
05.23.24

SHEET NO:
S16A

VERTICAL ROOF / SIDING OPTION



TYPICAL SIDE FRAMING SECTION VERTICAL ROOF / SIDING OPTION



(TYPICAL) ROOF PANEL ATTACHMENT



TAYLOR & VIOLA
STRUCTURAL ENGINEERS
P.O.B. 2616 HICKORY NORTH CAROLINA
TELE: 828-328-6331 FAX: 828-322-1801
WWW.TAYLORVIOLA.COM

JCMT Associates, PLLC
211 Stone Drive, Pilot Mountain, NC 27041
Telephone: (336) 399-6277

VI.0

SELECT STEEL
BUILDINGS, INC.

2745 STATESVILLE RD.
WILKESBORO, NORTH CAROLINA 28697
TELE: 366-973-0721

DRAWN BY:
BKS

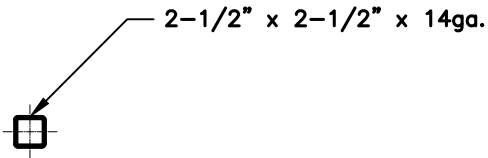
PROJECT NO:
24-511

DATE:
05.23.24

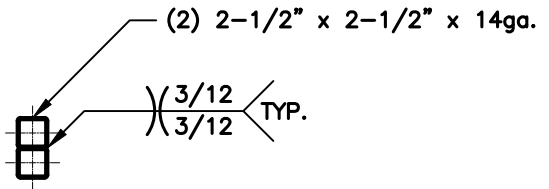
SHEET NO:
S16B

NOTE: THESE DRAWINGS ARE VALID FOR (1) CALENDER YEAR AFTER THE ISSUE DATE LISTED ON THIS SHEET.

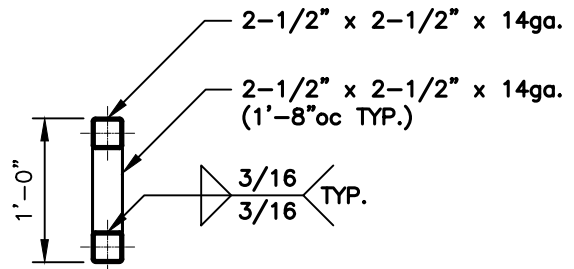
SIDE WALL HEADER OPTIONS



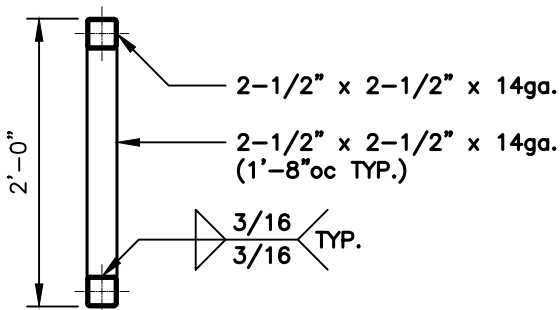
LACED HEADER DETAIL FOR
OPENINGS <4'-0"



LACED HEADER DETAIL FOR
OPENINGS >4'-0" TO <12'-0"



LACED HEADER DETAIL FOR
OPENINGS >12'-1" TO <16'-0"



LACED HEADER DETAIL FOR
OPENINGS >15'-1" TO <20'-0"

GENERAL NOTE:

PROVIDE DOUBLE WYTHE HEADER
ON DOUBLE COLUMNS.



TAYLOR & VIOLA
STRUCTURAL ENGINEERS
P.O.B. 2616 HICKORY NORTH CAROLINA
TELE: 828-328-6331 FAX: 828-322-1801
WWW.TAYLORVIOLA.COM

JCMT Associates, PLLC
211 Stone Drive, Pilot Mountain, NC 27041
Telephone: (336) 399-6277

VI.0

SELECT STEEL
BUILDINGS, INC.

2745 STATESVILLE RD.
WILKESBORO, NORTH CAROLINA 28697
TELE: 366-973-0721

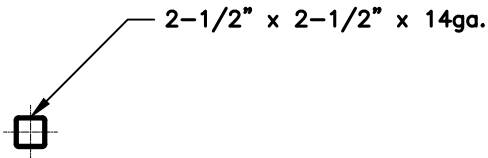
DRAWN BY:
BKS

PROJECT NO:
24-511

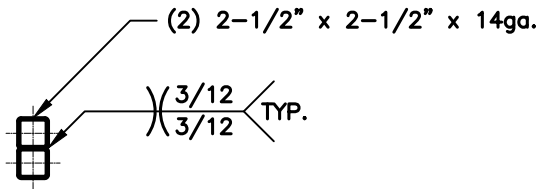
DATE:
05.23.24

SHEET NO:
S17

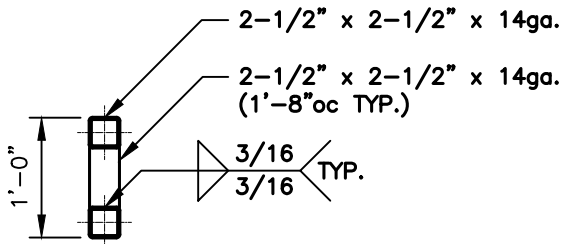
END WALL HEADER OPTIONS



LACED HEADER DETAIL FOR
OPENINGS <7'-0"



LACED HEADER DETAIL FOR
OPENINGS >7'1" TO <16'-0"



LACED HEADER DETAIL FOR
OPENINGS >16'-1" TO <20'-0"

GENERAL NOTE:

PROVIDE DOUBLE WYTHE HEADER
ON DOUBLE COLUMNS



TAYLOR & VIOLA
STRUCTURAL ENGINEERS
P.O.B. 2616 HICKORY NORTH CAROLINA
TELE: 828-328-6331 FAX: 828-322-1801
WWW.TAYLORVIOLA.COM

JCMT Associates, PLLC
211 Stone Drive, Pilot Mountain, NC 27041
Telephone: (336) 399-6277

VI.0

SELECT STEEL
BUILDINGS, INC.

2745 STATESVILLE RD.
WILKESBORO, NORTH CAROLINA 28697
TELE: 366-973-0721

DRAWN BY:
BKS

DATE:
05.23.24

PROJECT NO:
24-511

SHEET NO:
S17A