

SITE PLAN

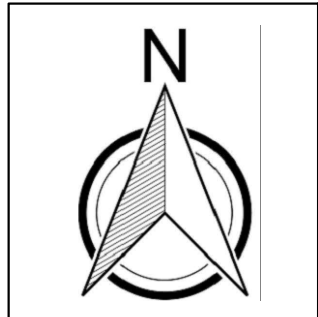
26 Rocky Point Ct

Fuquay-Varina, NC 27526

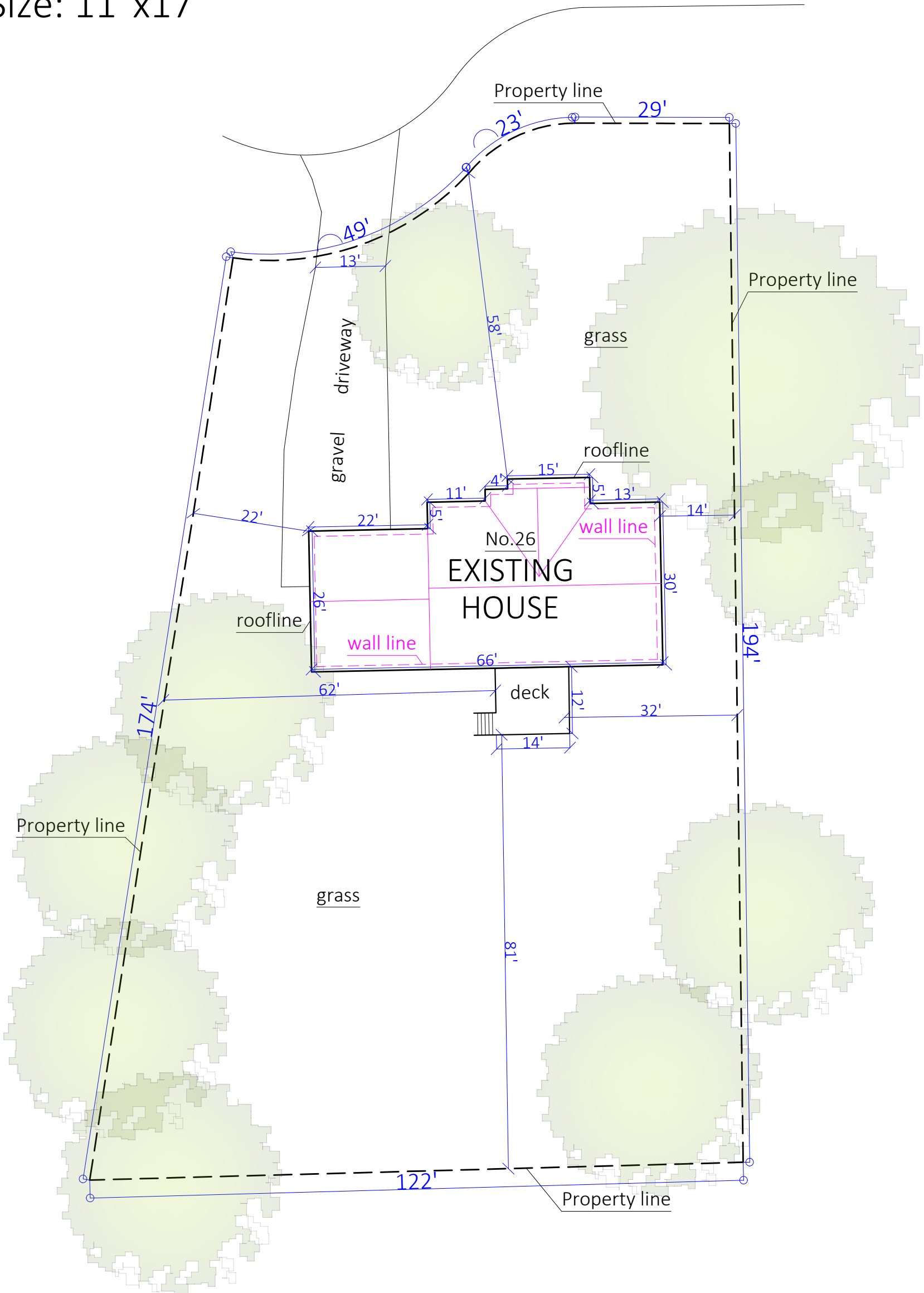
Parcel ID: 080644 0017 69

Lot area: 0.45 Acres Rocky Point Ct

Paper Size: 11"x17"



scale 1"=20'



Calculating Building and Lot Coverage Percentages

Lot area: 19,602 sq.ft.

Total building coverage (gross floor area): 2,003 sq.ft.

Building Coverage Percentage: $2,003 \text{ sq.ft.} / 19,602 \text{ sq.ft.} = 0.10218 = 10.2\%$

Total Lot Coverage: 3,093 sq.ft.

Lot Coverage Percentage: $3,093 \text{ sq.ft.} / 19,602 \text{ sq.ft.} = 0.15779 = 15.8\%$

*Total landscape areas: