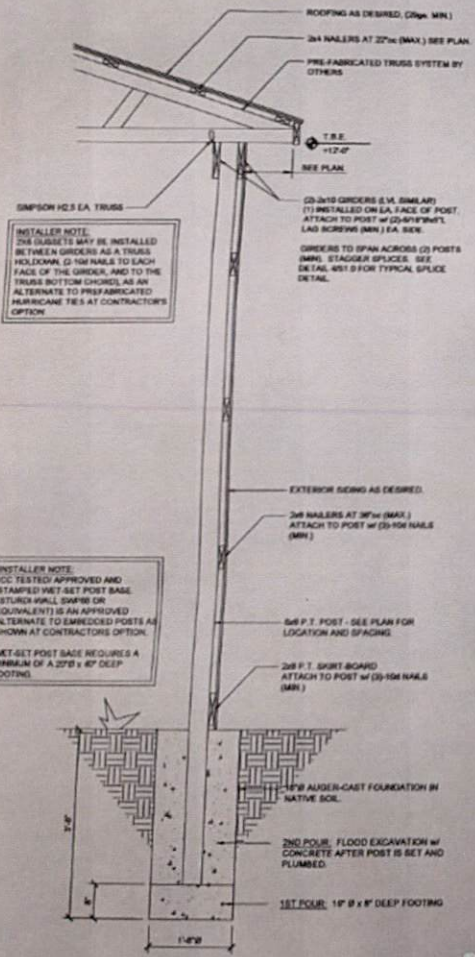
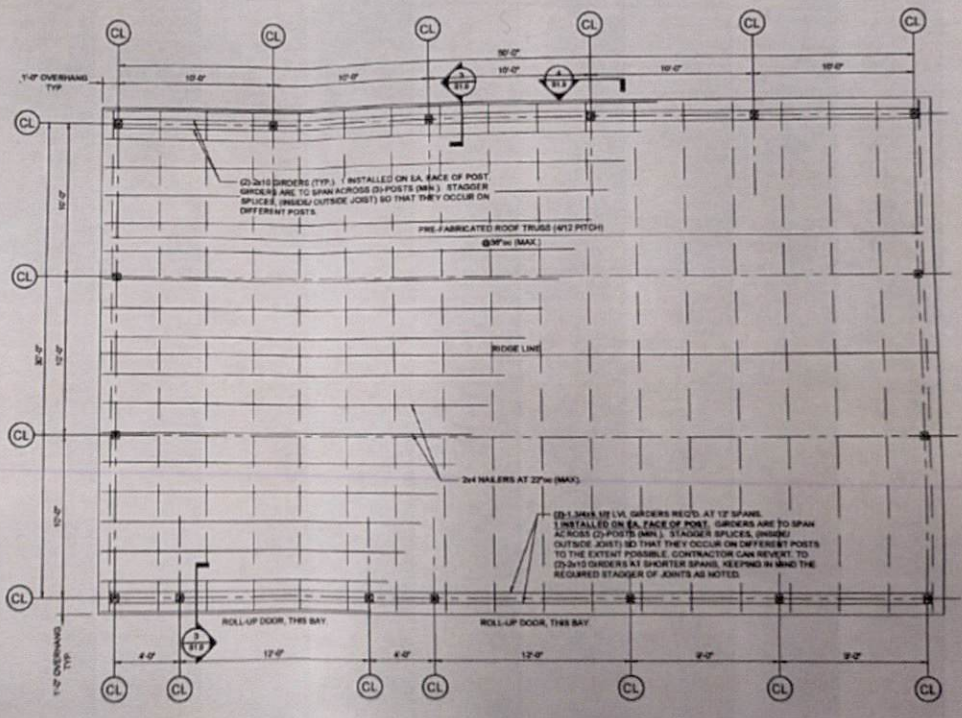


4 GIRDER SPLICE DETAIL
SCALE: 1/16" = 1'-0"

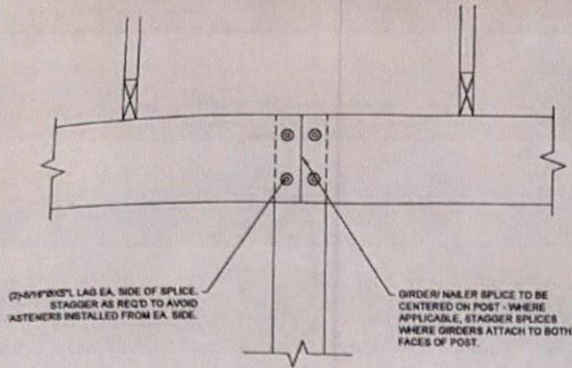


3 SECTION - POLE BARN WALL FRAMING
SCALE: 3/4" = 1'-0"

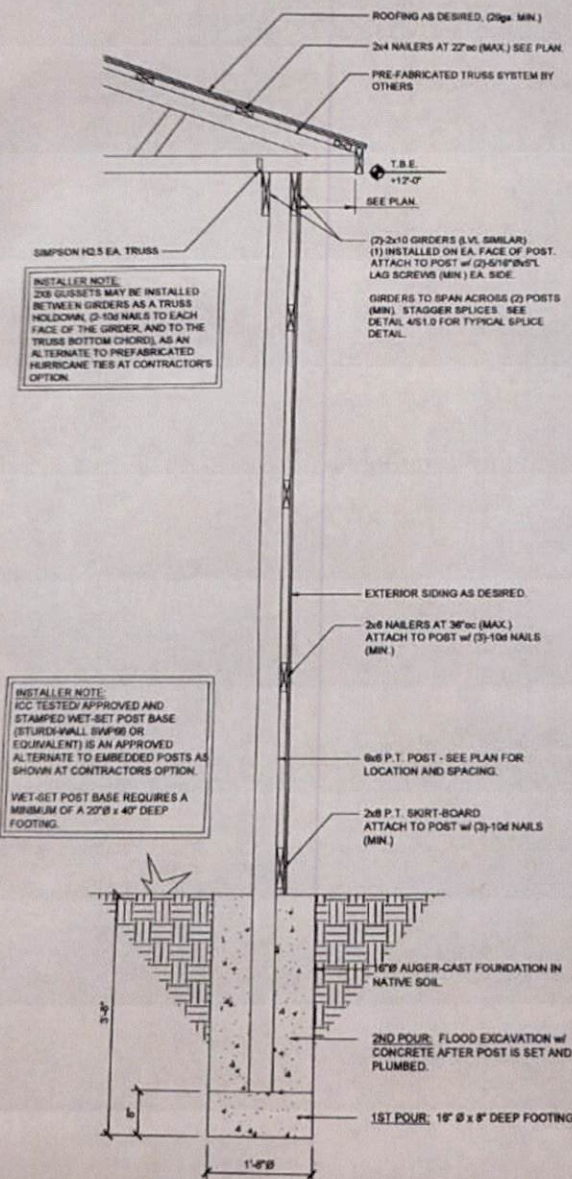


2 ROOF FRAMING PLAN
SCALE: 1/4" = 1'-0"

2780 Norkington



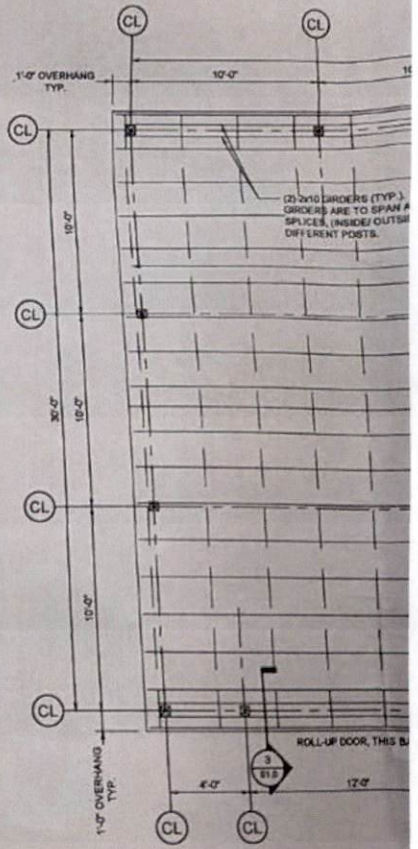
4 GIRDER SPLICE DETAIL
SCALE: 1/12" = 1'-0"



INSTALLER NOTE:
2x8 GUSSETS MAY BE INSTALLED BETWEEN GIRDERS AS A TRUSS HOLD-DOWN. (2-10# NAILS TO EACH FACE OF THE GIRDER, AND TO THE TRUSS BOTTOM CHORD), AS AN ALTERNATE TO PREFABRICATED HURRICANE TIES AT CONTRACTOR'S OPTION.

INSTALLER NOTE:
ICC TESTED/ APPROVED AND STAMPED WET-SET POST BASE (STURDI-WALL 504988 OR EQUIVALENT) IS AN APPROVED ALTERNATE TO EMBEDDED POSTS AS SHOWN AT CONTRACTOR'S OPTION.
WET-SET POST BASE REQUIRES A MINIMUM OF A 2'0\"/>

3 SECTION - POLE BARN WALL FRAMING
SCALE: 3/4" = 1'-0"



(2) 2x10 GIRDERS (TYP.) GIRDERS ARE TO SPAN # SPLICES, (INSIDE/ OUTSIDE) DIFFERENT POSTS.

ROLL-UP DOOR, THIS B...