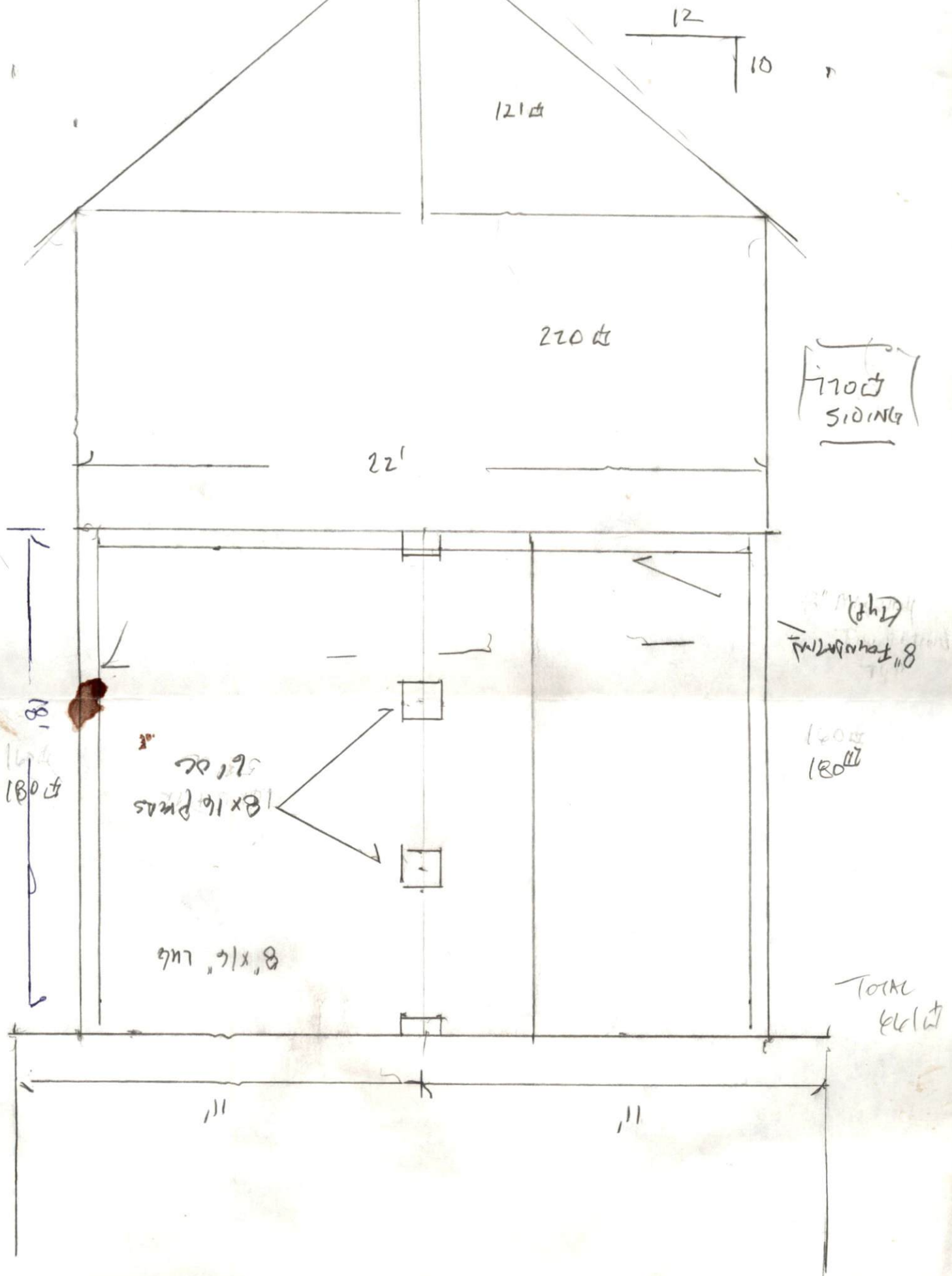
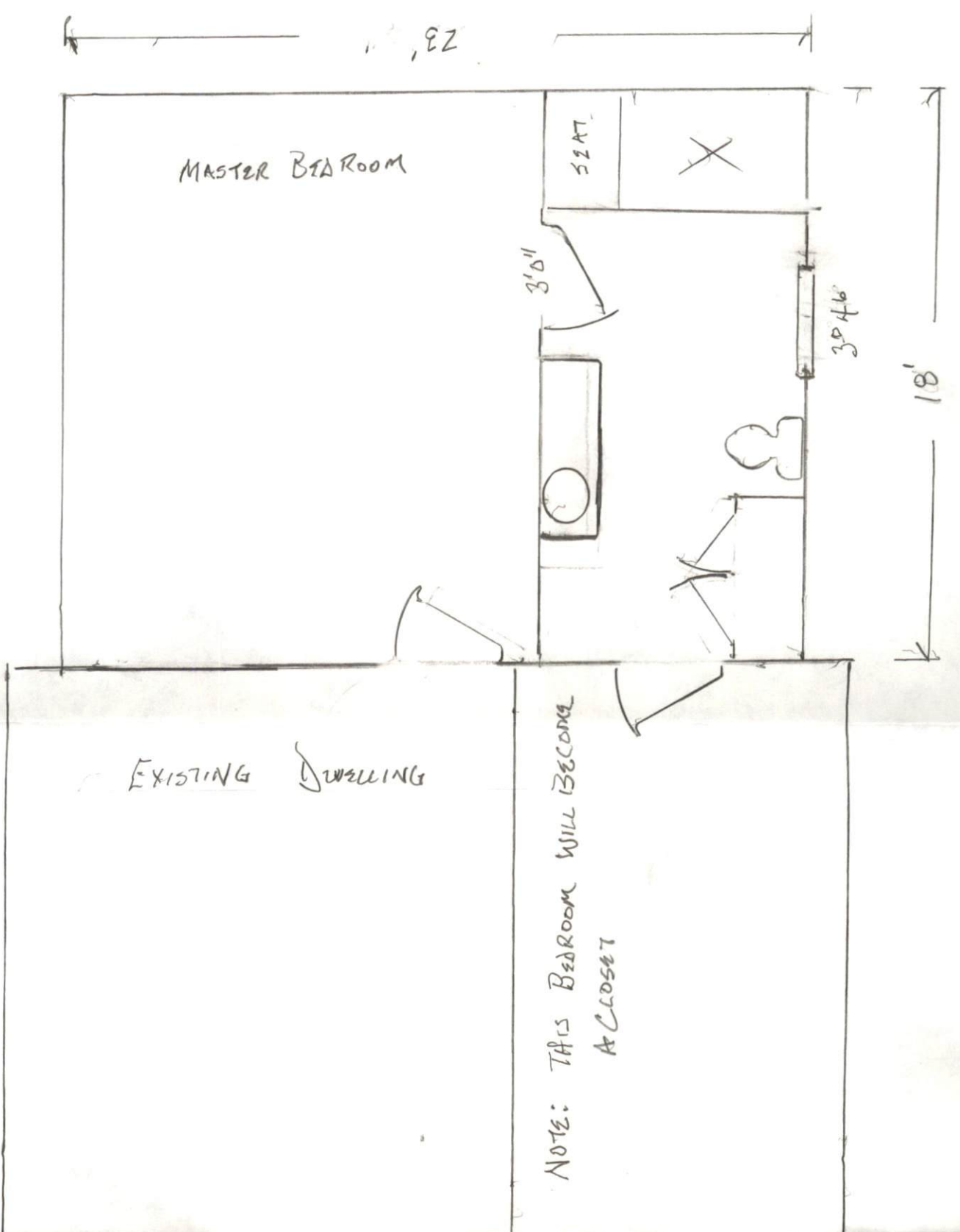


FOUNDATION PLAN



NOT TO SCALE



MASTER BEDROOM

SEAT

3' 0"

3' 4 1/2"

18'

EXISTING DWELLING

NOTE: THIS BEDROOM WILL BECOME
A CLOSET

NET TO SENSE

Window

Window

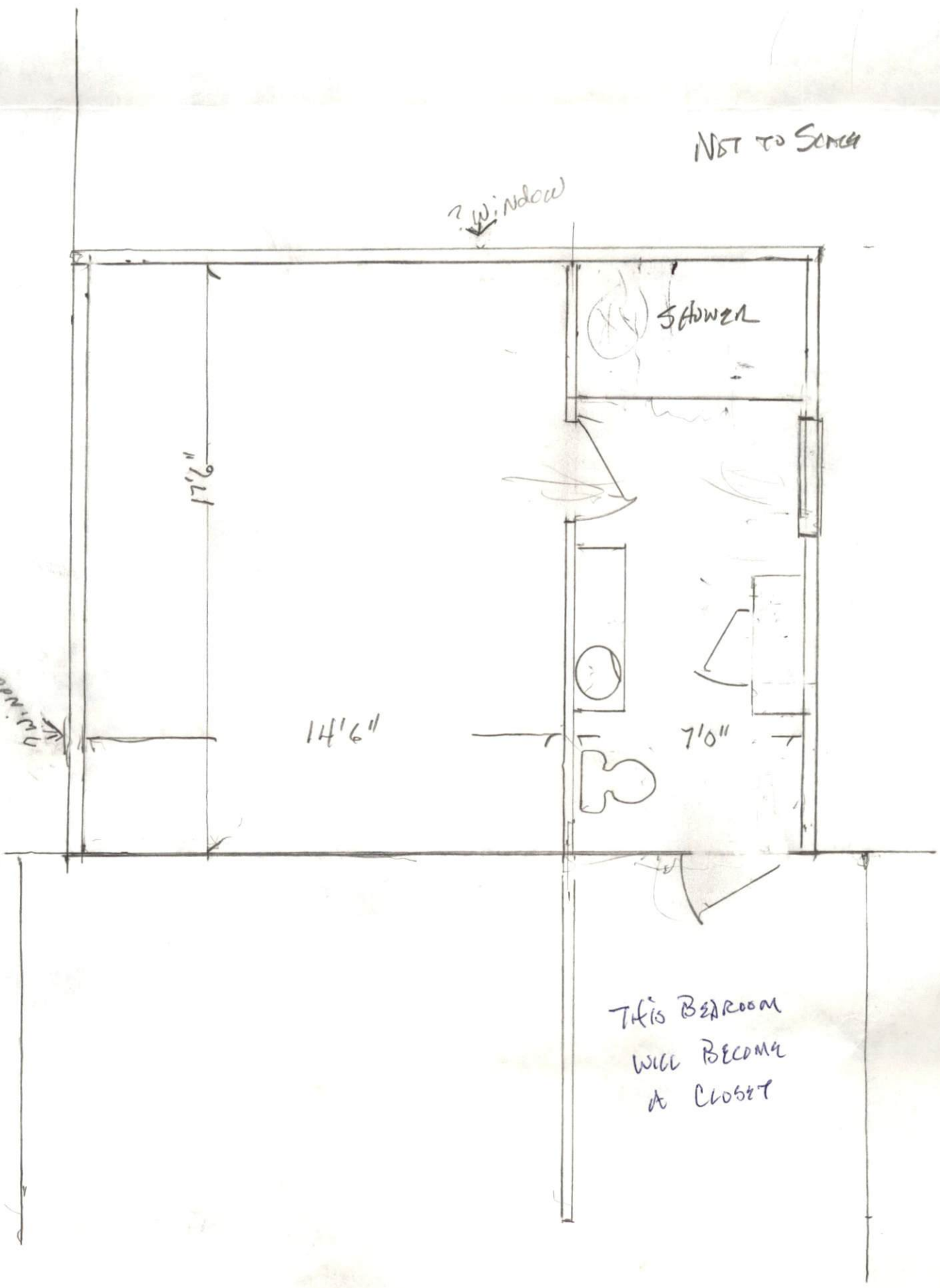
17'6"

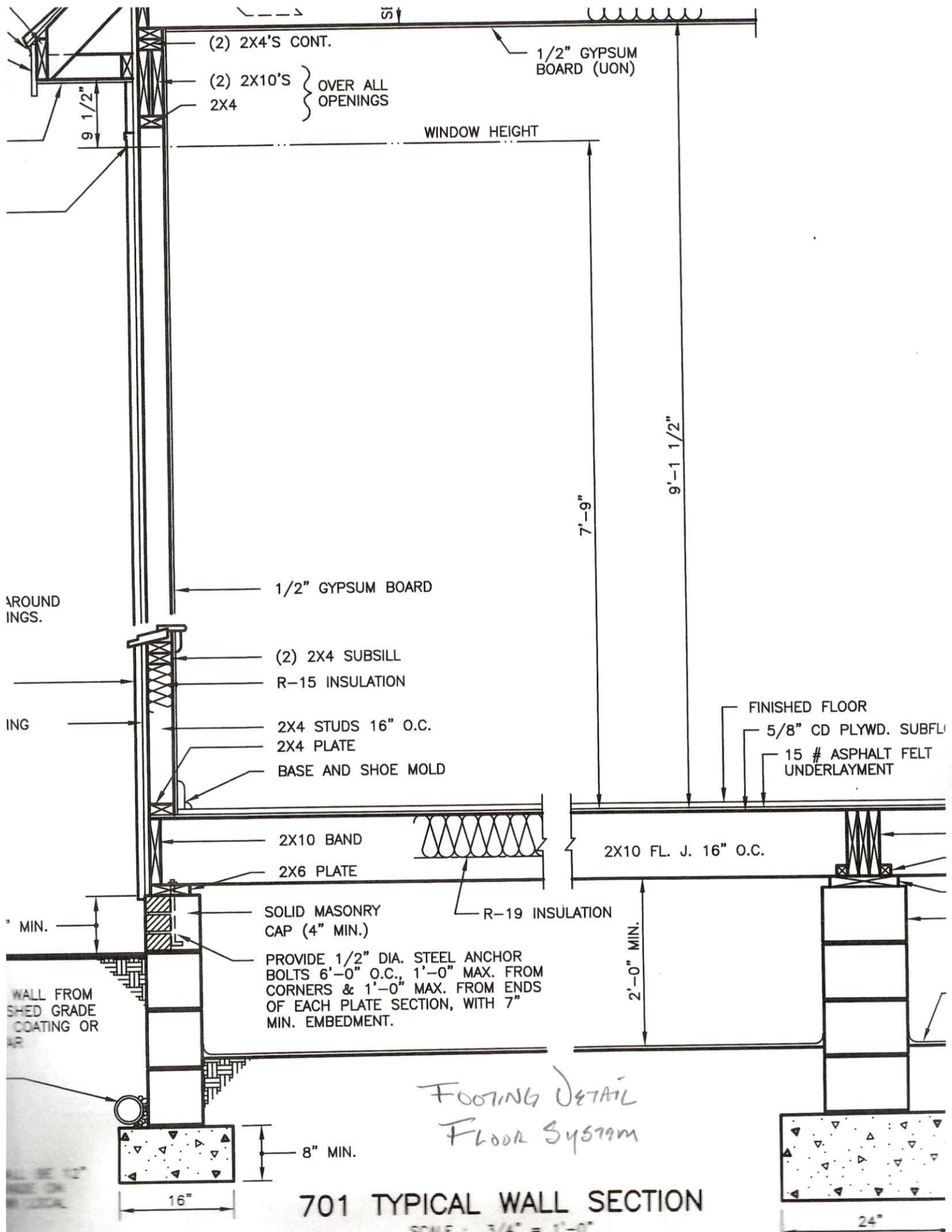
14'6"

SHOWER

7'0"

THIS BEDROOM
WILL BECOME
A CLOSET





(2) 2X4'S CONT.

1/2" GYPSUM BOARD (UON)

(2) 2X10'S } OVER ALL OPENINGS
2X4

9 1/2"

WINDOW HEIGHT

7'-9"

9'-1 1/2"

AROUND
INGS.

1/2" GYPSUM BOARD

(2) 2X4 SUBSILL
R-15 INSULATION

ING

2X4 STUDS 16" O.C.
2X4 PLATE
BASE AND SHOE MOLD

FINISHED FLOOR
5/8" CD PLYWD. SUBFL
15 # ASPHALT FELT UNDERLAYMENT

2X10 BAND
2X6 PLATE

2X10 FL. J. 16" O.C.

9" MIN.

SOLID MASONRY CAP (4" MIN.)

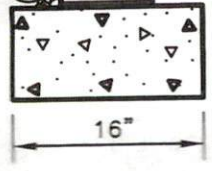
R-19 INSULATION

2'-0" MIN.

WALL FROM
SHED GRADE
COATING OR
AP

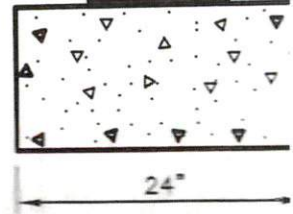
PROVIDE 1/2" DIA. STEEL ANCHOR BOLTS 6'-0" O.C., 1'-0" MAX. FROM CORNERS & 1'-0" MAX. FROM ENDS OF EACH PLATE SECTION, WITH 7" MIN. EMBEDMENT.

ALL BE 12"
BASE ON
FOOTING



8" MIN.

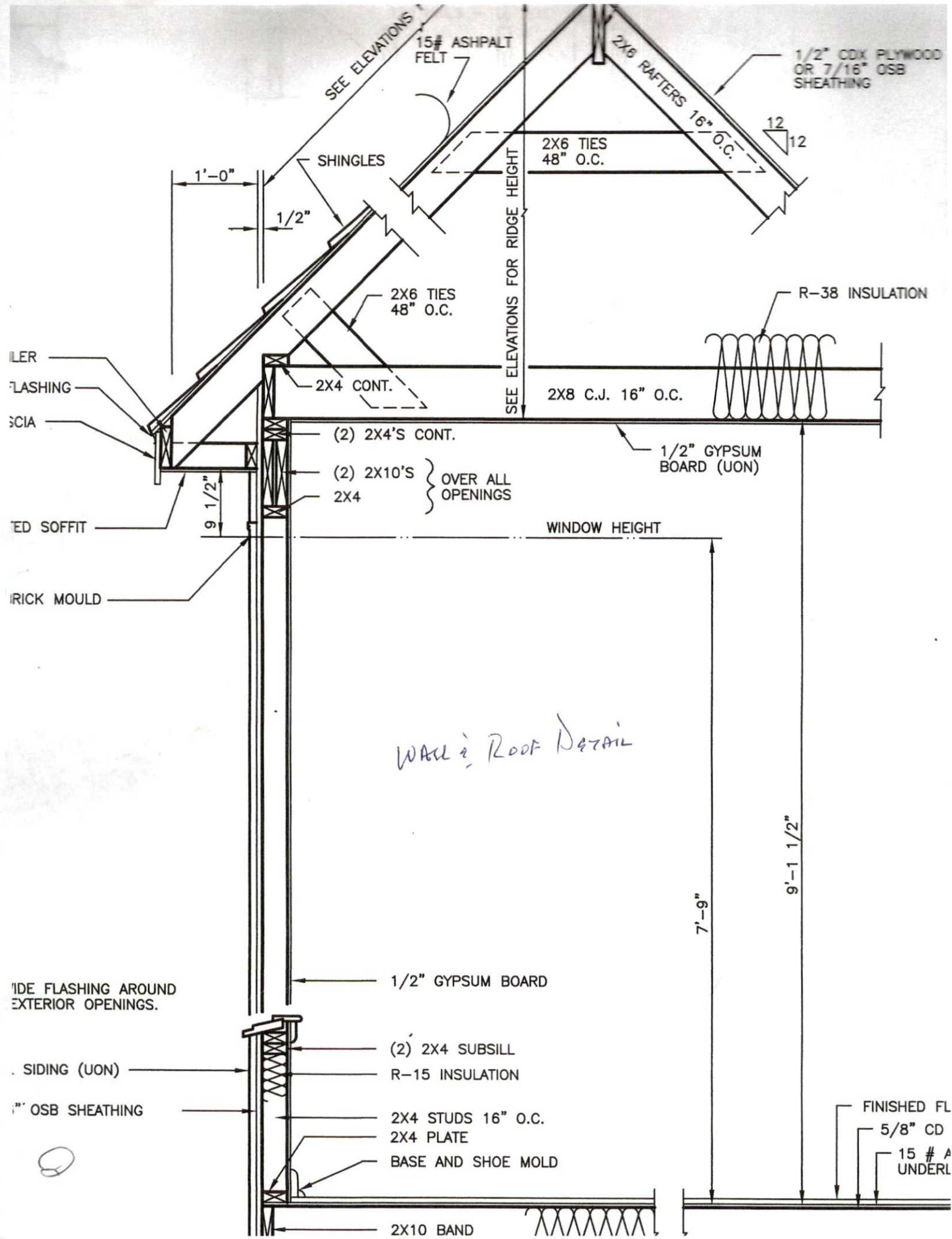
*FOOTING DETAIL
FLOOR SYSTEM*



24"

701 TYPICAL WALL SECTION

SCALE : 3/4" = 1'-0"



SEE ELEVATIONS

15# ASPHALT FELT

1/2" CDX PLYWOOD OR 7/16" OSB SHEATHING

2X6 RAFTERS 16" O.C.

2X6 TIES 48" O.C.

12/12

SHINGLES

1'-0"

1/2"

2X6 TIES 48" O.C.

R-38 INSULATION

FLASHER

FLASHING

SCIA

2X4 CONT.

2X8 C.J. 16" O.C.

(2) 2X4'S CONT.

1/2" GYPSUM BOARD (UON)

(2) 2X10'S

OVER ALL OPENINGS

2X4

FINISHED SOFFIT

9 1/2"

WINDOW HEIGHT

TRICK MOULD

Wall & Roof Detail

7'-9"

9'-1 1/2"

SIDE FLASHING AROUND EXTERIOR OPENINGS.

1/2" GYPSUM BOARD

SIDING (UON)

(2) 2X4 SUBSILL

R-15 INSULATION

1/2" OSB SHEATHING

2X4 STUDS 16" O.C.

2X4 PLATE

BASE AND SHOE MOLD

FINISHED FL

5/8" CD

15 # A UNDERL

2X10 BAND