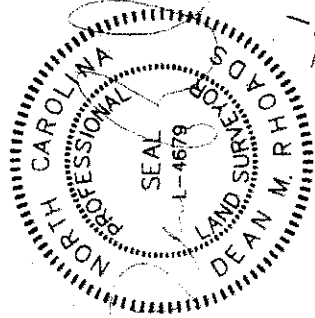


VICINITY MAP
Not To Scale



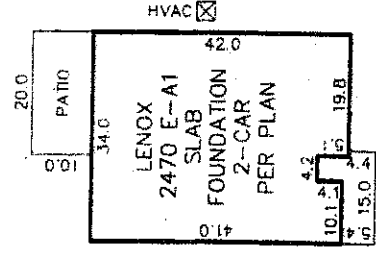
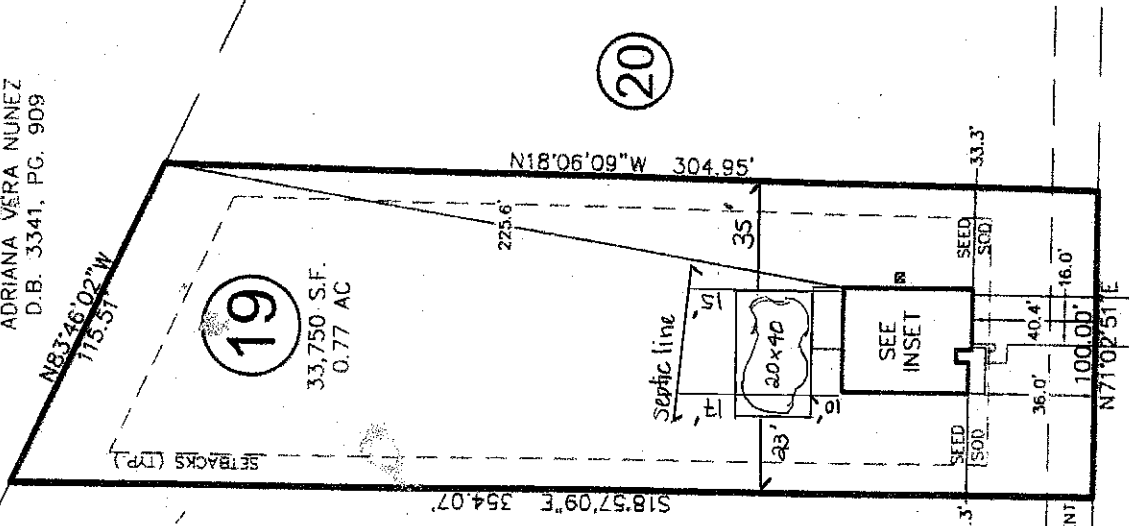
PB 2019, PG 291-293

SEIBACKS: (PB 2019 PG 291)

FRONT - 35'
SIDE - 10'
REAR - 25'
CORNER - 20'

N/F
EZEQUIEL &
ADRIANA VERA NUNEZ
D.B. 3341, PG. 909

IMPERVIOUS SURFACE AREA	
DESCRIPTION	AREA (S.F.)
LOT AREA TO B/C	35,249
HOUSE	1,495
DRIVE TO R/W	647
DRIVE APRON	249
PATIO	200
LEAD WALK	36
PUBLIC WALK	0
TOTAL PROPOSED	2,627
% IMPERVIOUS AREA	= 7.5%
SOD/SEEDING	
TYPE	S.F.
SOD	4,587
SEED & STRAW	28,035



INSET
N.T.S.

SITE PLAN APPROVAL

DISTRICT RA-3-D USE SFD

SE ROOMS 3

112210020

N71°02'51"E

15' UTILITY EASEMENT

SEIBACKS

112210020

NORRIS FARM DRIVE

50' PUBLIC R/W &
UTILITY EASEMENT

THIS DRAWING DOES NOT
REFLECT AS-BUILT INFORMATION