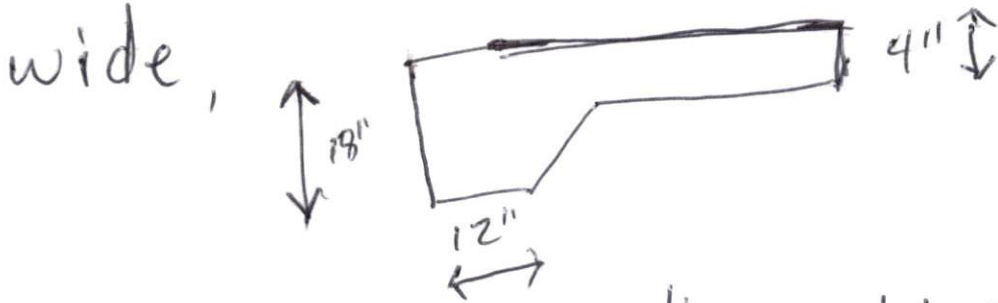


① PLAN'S FOR 149 Thistle Court DR.

Foundation - going to be a monolithic slab
24 x 36, 18 inches deep around
outer edge underneath wall's + 12 inches
wide,



treated 2x6 separating wood + concrete
for bottom plate, using 1/2 bolts every 4
foot apart

Wall's - 2x4x93" studs, 7/16 OSB plywood 16 inches
on center bolted to foundation

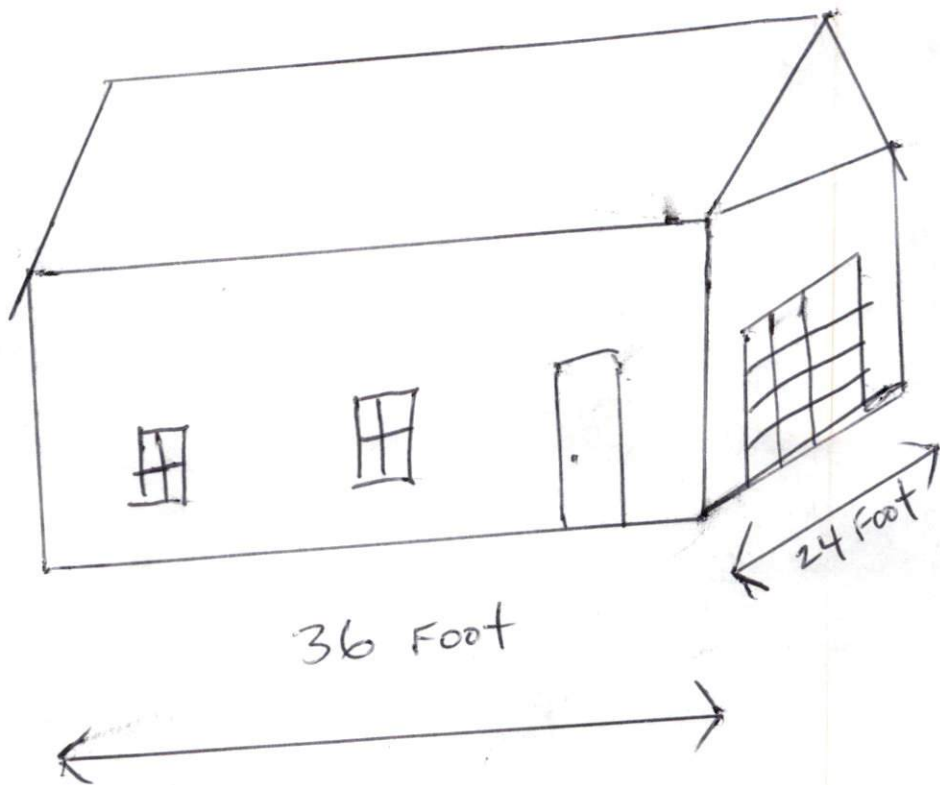
- Header's Above all window's 2x10 with 1/2
plywood in between the 2x10's with 2x4 on top
+ bottom of the 2x10's

Garage door opening 12 Ft use 2 LVL's at least 14
Foot long 5 studs under each side of opening

Roof - using 2x6's, 7/16 OSB plywood nailed 16
inches on center, 2x8 for the Ridge board
2x4 for fascia board on a 6/12 pitch, tarpaper
+ shingle's

(2)

Plans For 149 Thistle Court Dr.



24 X 36 GARAGE/BUILDING

1- 36 inches door

1- 12 Foot Garage door

3- windows 30 X 54

2- window's 12 X 36

- Vinyl Siding + PVC Coil on FASCIA,
on wall + SOFFIT