

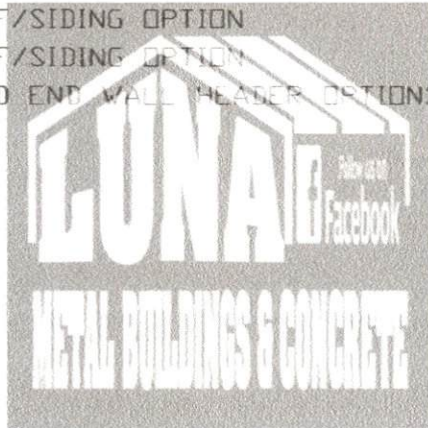
MOORE AND ASSOCIATES
ENGINEERING AND CONSULTING, INC.

DRAWN BY: LT
CHECKED BY: PDM

LUNA METAL BUILDINGS
468 N FAYETTEVILLE ST.
ASHEBORO, NC 27203
31'-0"-50'-0"x16'-0" RC II ENCLOSED STRUCTURE

DRAWING INDEX

SHEET 1	PE SEAL COVER SHEET
SHEET 2	DRAWING INDEX
SHEET 3	INSTALLATION NOTES AND SPECIFICATIONS
SHEET 4	TYPICAL END AND SIDE ELEVATIONS
SHEET 5	TYPICAL RAFTER/POST END FRAMING SECTIONS
SHEET 5A	TYPICAL RAFTER/POST END FRAMING SECTIONS
SHEET 5B	TYPICAL RAFTER/POST SIDE FRAMING SECTIONS
SHEET 6	TYPICAL RAFTER/POST CONNECTION DETAILS
SHEET 7	BASE RAIL ANCHORAGE OPTIONS
SHEET 8	END WALL AND END WALL OPENINGS
SHEET 8A	SIDE WALL OPENINGS
SHEET 9	CONNECTION DETAILS
SHEET 10	CONNECTION DETAILS
SHEET 11	LEAN-TO OPTIONS
SHEET 11A	LEAN-TO OPTIONS
SHEET 11B	LEAN-TO OPTIONS
SHEET 12	VERTICAL ROOF/SIDING OPTION
SHEET 13	VERTICAL ROOF/SIDING OPTION
SHEET 13A	VERTICAL ROOF/SIDING OPTION
SHEET 14	SIDE WALL AND END WALL HEADER OPTIONS



**MOORE AND ASSOCIATES
ENGINEERING AND CONSULTING, INC.**

DRAWN BY: LT

CHECKED BY: PDH

**LUNA METAL BUILDINGS
468 N FAYETTEVILLE ST.
ASHEBORO, NC 27203
31'-0"-50'-0" x 16'-0" RC II ENCLOSED STRUCTURE**

INSTALLATION NOTES AND SPECIFICATIONS

- 1 DESIGN IS FOR A MAXIMUM 31'-0" TO 50'-0" WIDE x 16'-0" EAVE HEIGHT ENCLOSED STRUCTURES
- 2 DESIGN WAS DONE IN ACCORDANCE WITH THE 2018 NORTH CAROLINA BUILDING CODE (NCBC), 2018 INTERNATIONAL BUILDING CODE (IBC), 2015 IBC AND 2012 IBC
- 3 DESIGN LOADS ARE AS FOLLOWS:
 - A) DEAD LOAD = 11.5 PSF
 - B) ROOF LIVE LOAD = 20 PSF
 - C) GROUND SNOW LOAD = 35 PSF

NOTE: UNBALANCED SNOW LOAD DUE TO DRIFTING HAS NOT BEEN EVALUATED.
- 4 3-SECOND GUST ULTIMATE WIND SPEED (V_{ULT}) = \leq 155 MPH (NOMINAL WIND SPEED = \leq 120 MPH).
- 5 MAXIMUM RAFTER/POST AND END POST SPACING = 40 FEET O.C. (UNLESS NOTED OTHERWISE).
6. END WALL POSTS ARE SIMILAR TO SIDE WALL POSTS UNLESS NOTED OTHERWISE.
- 7 RISK CATEGORY I/II.
- 8 WIND EXPOSURE CATEGORY B/C.
- 9 SPECIFICATIONS APPLICABLE TO 29 GAUGE METAL PANELS FASTENED DIRECTLY TO 2 1/4" x 2 1/4" - 14 GAUGE TUBE STEEL (TS) FRAMING MEMBERS (UNLESS NOTED OTHERWISE). TS 2 1/4" x 2 1/4" - 12 GAUGE MAY BE USED AS AN OPTION.
- 10 AVERAGE FASTENER SPACING ON-CENTERS ALONG RAFTERS OR PURLINS, AND POSTS (INTERIOR OR END) = 8" O.C. (MAX.) AND 8" O.C. (MAX.) FOR RC II
- 11 FASTENERS CONSIST OF #12-14x3/4" SELF-DRILLING FASTENER (SDF), USE CONTROL SEAL WASHER WITH EXTERIOR FASTENERS. SPECIFICATIONS APPLICABLE ONLY FOR MEAN ROOF HEIGHT OF 16 FEET OR LESS, AND ROOF SLOPES OF 14" (3:12 PITCH) OR LESS SPACING REQUIREMENTS FOR OTHER ROOF HEIGHTS AND/OR SLOPES MAY VARY. ROOF SLOPES LESS THAN 3:12 REQUIRE USE OF LAP JOINT SEALANT.
- 12 ANCHORS SHALL BE INSTALLED THROUGH BASE RAIL WITHIN 6" OF EACH COLUMN
- 13 STANDARD GROUND ANCHORS (SOIL NAILS) CONSIST OF #4 REBAR W/ WELDED NUT x 36" LONG AND MAY ONLY BE USED FOR WIDTHS \leq 40'-0" AND $V_{ULT} = \leq$ 145 MPH IN CONJUNCTION WITH OTHER (OPTIONAL) ANCHOR DEVICES AND ONLY IN SUITABLE SOILS. OPTIONAL ANCHORAGE MAY BE USED IN SUITABLE SOILS AND MUST BE USED IN UNSUITABLE SOILS AS NOTED COORDINATE WITH LOCAL CODES/ORDINANCES REGARDING MINIMUM LENGTH FOR FROST DEPTH PROTECTION.
14. WIND FORCES GOVERN OVER SEISMIC FORCES. SEISMIC PARAMETERS ANALYZED ARE:
 - SOIL SITE CLASS = D
 - RISK CATEGORY I/II
 - R= 3.25
 - $S_{DS} = 2.039 g$
 - $S_{D1} = 1.258 g$
 - $I_E = 10$
 - $V = C_s W$
- 15 MAXIMUM THRESHOLD HEIGHT FOR PERSONNEL DOORS USED FOR MEANS OF EGRESS IN RC II STRUCTURES IS 1/2"



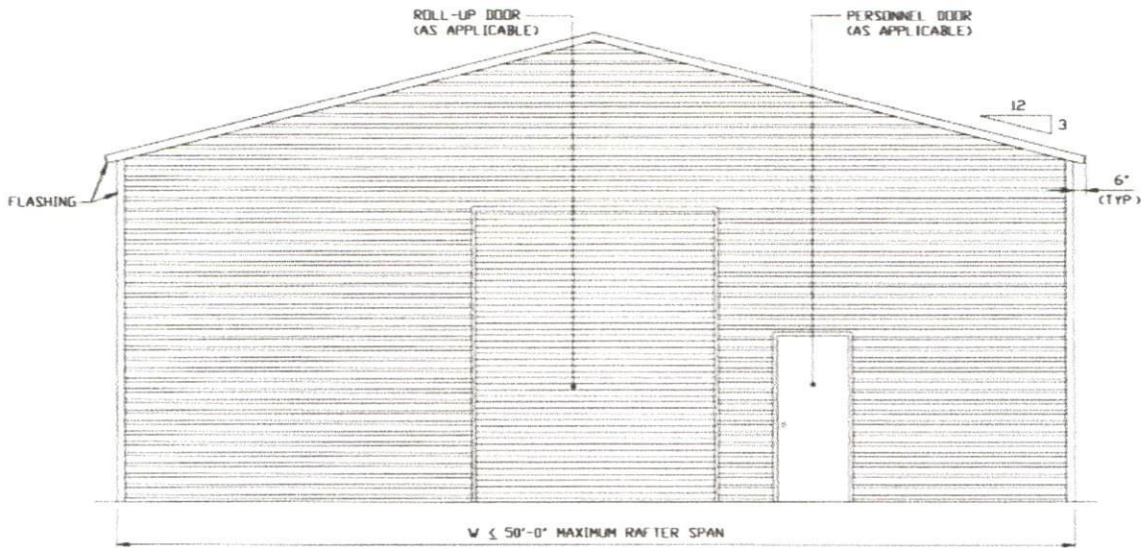
**MOORE AND ASSOCIATES
ENGINEERING AND CONSULTING, INC.**

DRAWN BY: LT

CHECKED BY: PDH

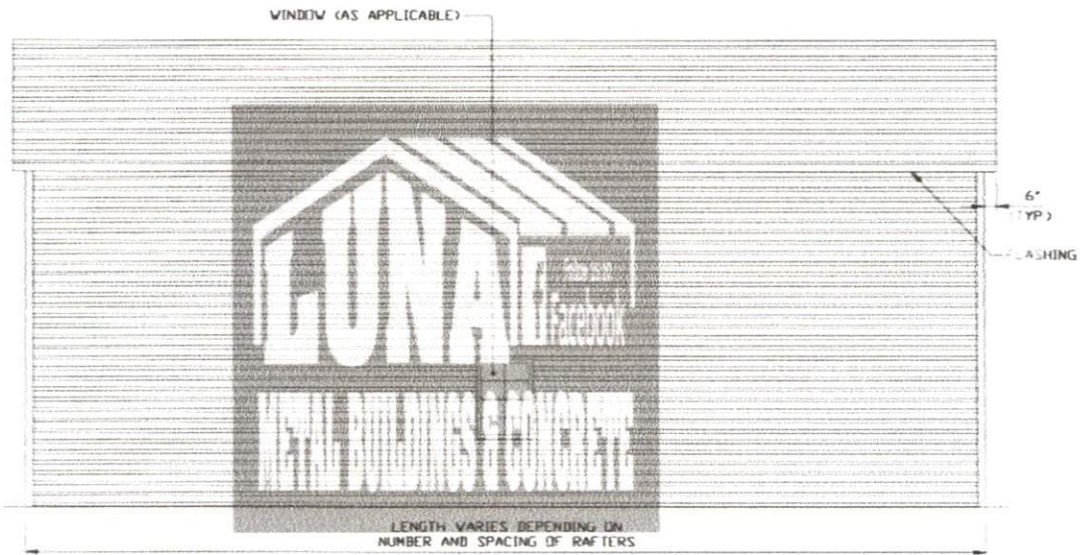
**LUNA METAL BUILDINGS
468 N FAYETTEVILLE ST.
ASHEBORO, NC 27203**

31'-0"-50'-0" x 16'-0" RC II ENCLOSED STRUCTURE



TYPICAL END ELEVATION

SCALE: NTS



TYPICAL SIDE ELEVATION

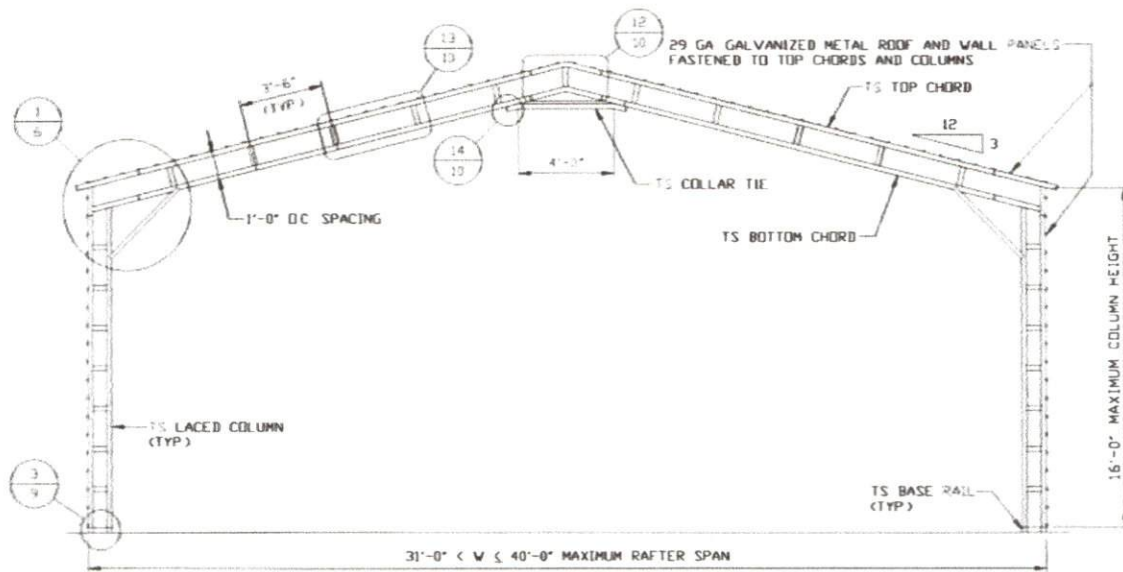
SCALE: NTS

**MOORE AND ASSOCIATES
ENGINEERING AND CONSULTING, INC.**

DRAWN BY: LT

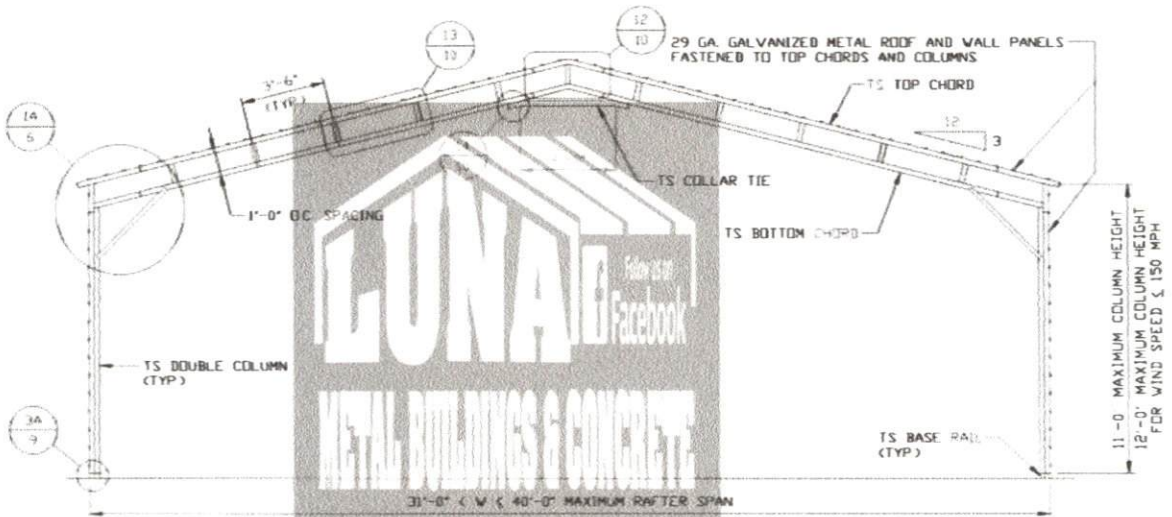
CHECKED BY: PDH

**LUNA METAL BUILDINGS
468 N FAYETTEVILLE ST.
ASHEBORO, NC 27203
31'-0"-50'-0"X16'-0" RC II ENCLOSED STRUCTURE**



TYPICAL RAFTER/COLUMN FRAME SECTION

SCALE: NTS



TYPICAL RAFTER/COLUMN FRAME SECTION

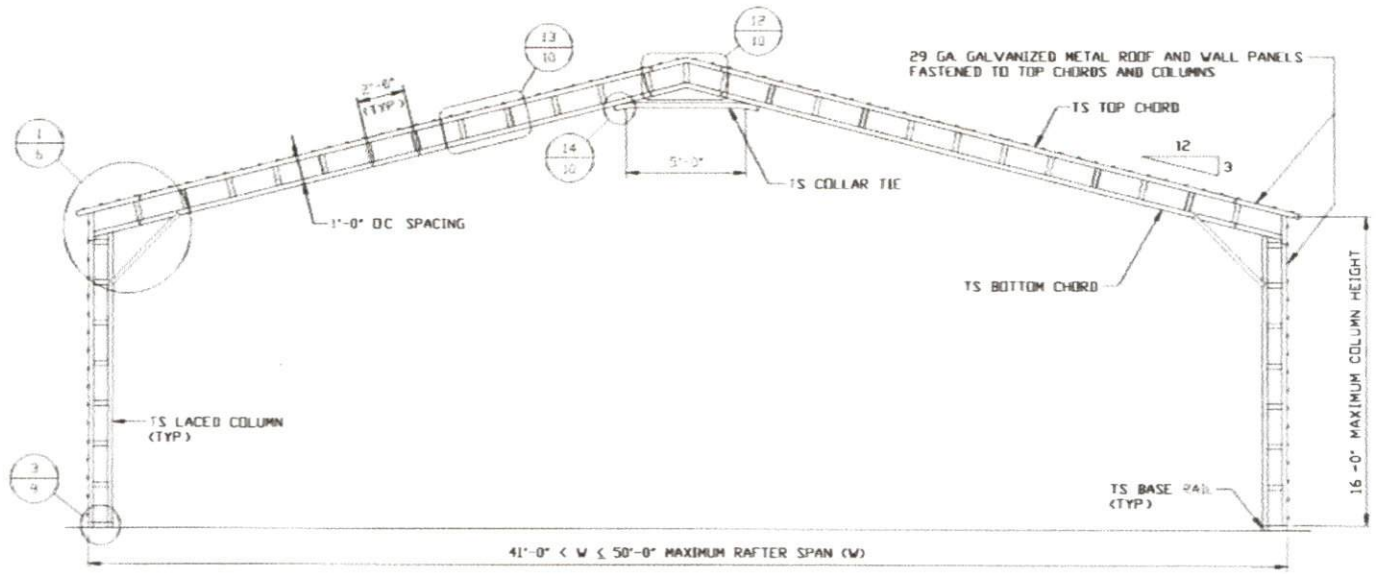
SCALE: NTS

**MOORE AND ASSOCIATES
ENGINEERING AND CONSULTING, INC.**

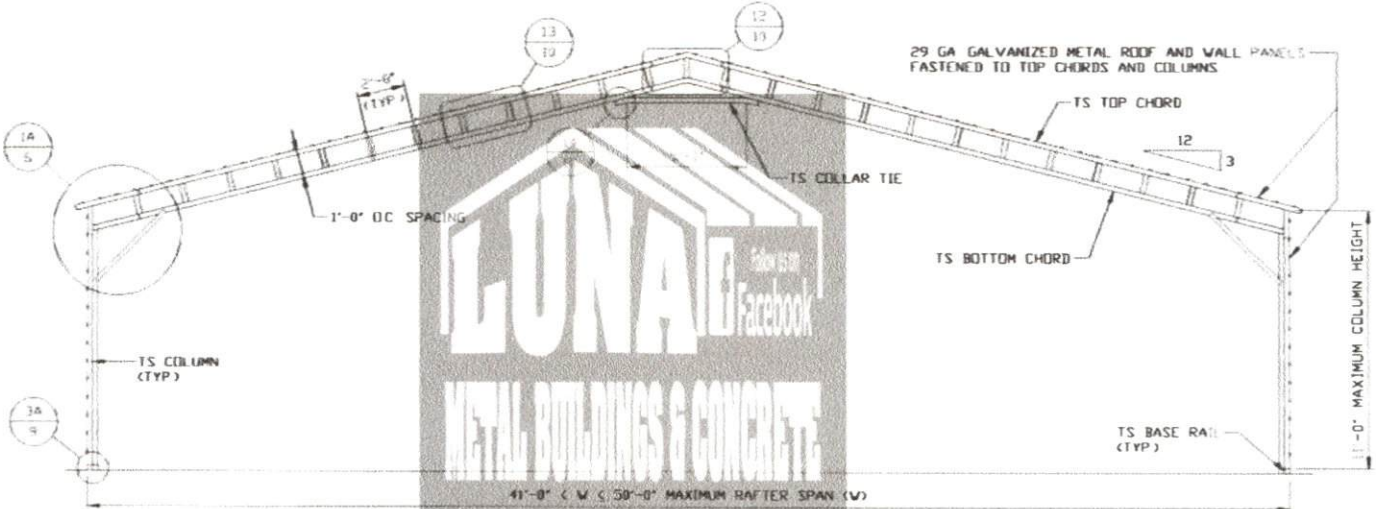
DRAWN BY: LT

CHECKED BY: PIDM

**LUNA METAL BUILDINGS
468 N FAYETTEVILLE ST.
ASHEBORO, NC 27203
31'-0"-50'-0" x 16'-0" RC II ENCLOSED STRUCTURE**



TYPICAL RAFTER/POST FRAME SECTION
SCALE: NTS



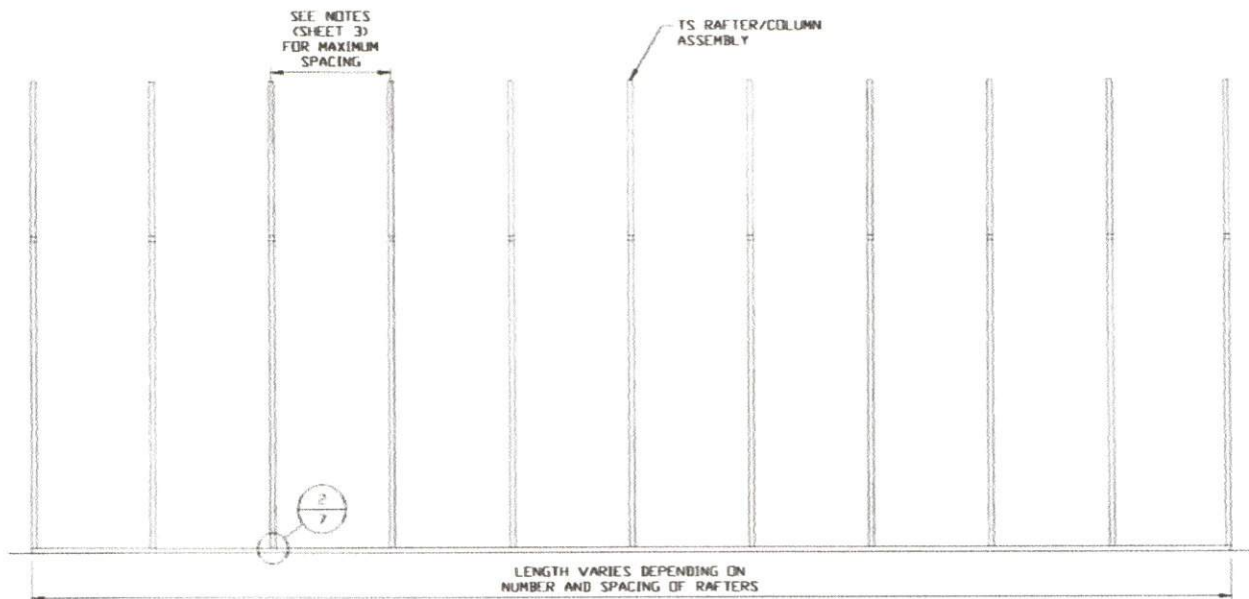
TYPICAL RAFTER/POST FRAME SECTION
SCALE: NTS

**MOORE AND ASSOCIATES
ENGINEERING AND CONSULTING, INC.**

DRAWN BY: LT
CHECKED BY: PDH

LUNA METAL BUILDINGS
468 N FAYETTEVILLE ST.
ASHEBORO, NC 27203
31'-0"-50'-0" x 16'-0" RC II ENCLOSED STRUCTURE

THIS DOCUMENT IS THE PROPERTY OF MOORE AND ASSOCIATES ENGINEERING AND CONSULTING, INC. IT IS TO BE USED ONLY FOR THE PROJECT AND SITE SPECIFICALLY IDENTIFIED HEREIN. IT IS NOT TO BE REPRODUCED, COPIED, OR TRANSMITTED IN ANY FORM OR BY ANY MEANS, ELECTRONIC OR MECHANICAL, INCLUDING PHOTOCOPYING, RECORDING, OR BY ANY INFORMATION STORAGE AND RETRIEVAL SYSTEM, WITHOUT THE WRITTEN PERMISSION OF MOORE AND ASSOCIATES ENGINEERING AND CONSULTING, INC.



TYPICAL RAFTER/POST SIDE FRAMING SECTION
 SCALE: NTS

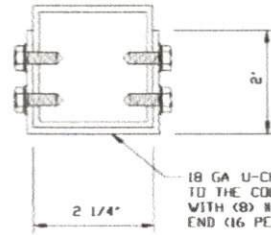
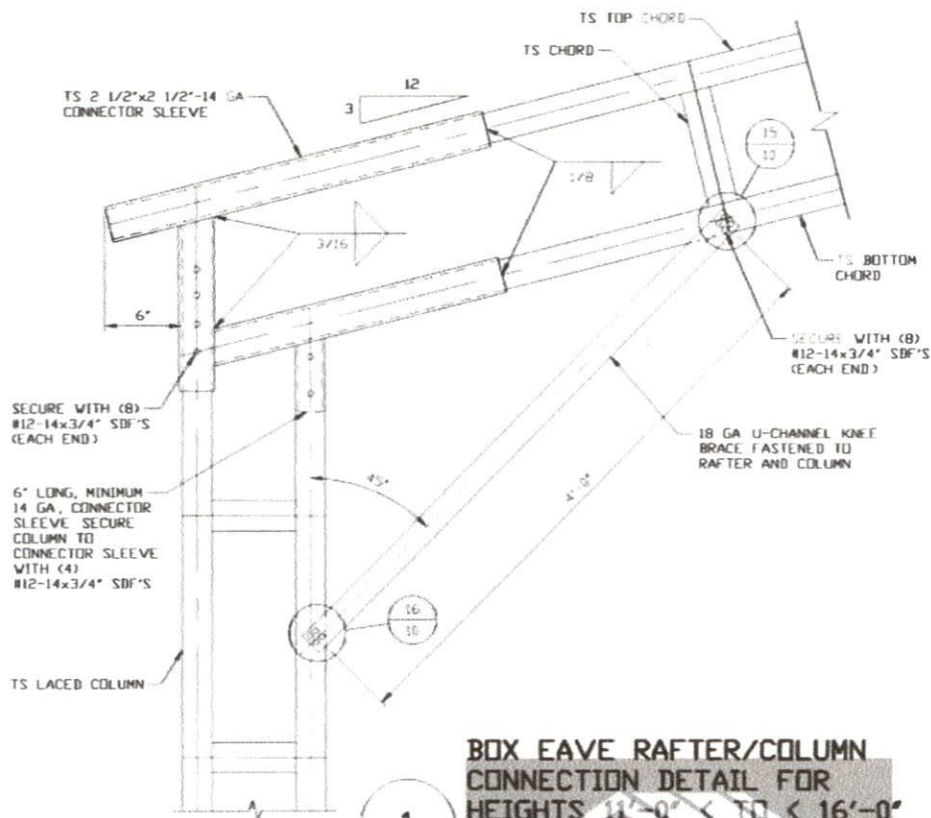


**MOORE AND ASSOCIATES
 ENGINEERING AND CONSULTING, INC.**

DRAWN BY: LT

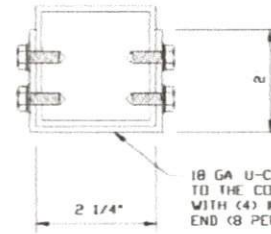
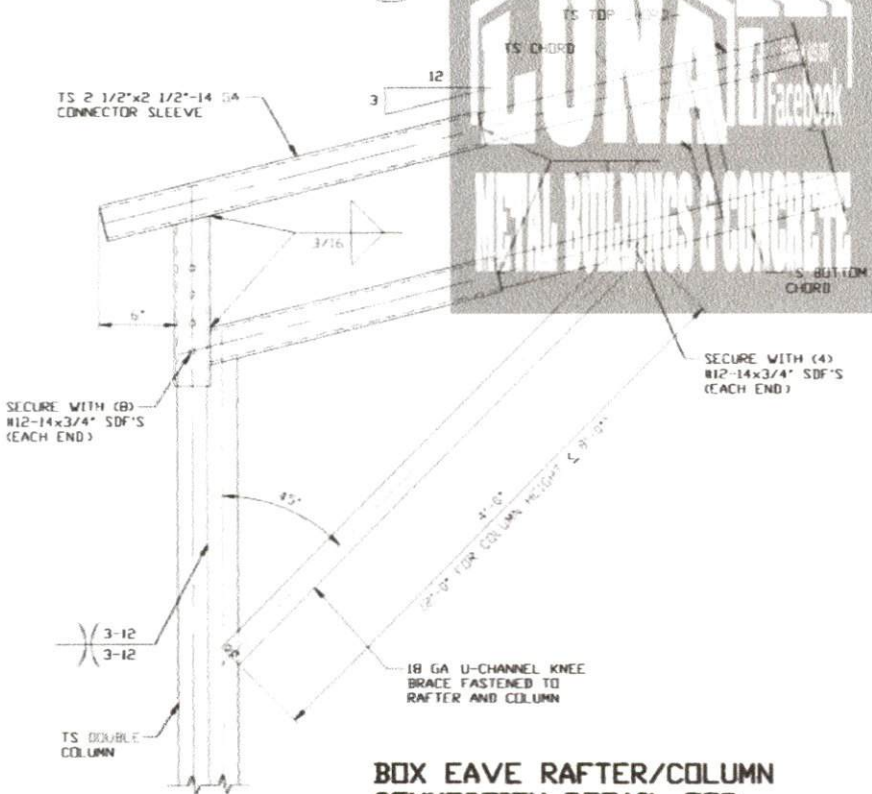
CHECKED BY: PDH

**LUNA METAL BUILDINGS
 468 N FAYETTEVILLE ST.
 ASHEBORO, NC 27203
 31'-0"-50'-0" x 16'-0" RC II ENCLOSED STRUCTURE**



BRACE SECTION
SCALE: NTS

1
BOX EAVE RAFTER/COLUMN CONNECTION DETAIL FOR HEIGHTS 11'-0" < TO <= 16'-0"
SCALE: NTS



BRACE SECTION
SCALE: NTS

1A
BOX EAVE RAFTER/COLUMN CONNECTION DETAIL FOR HEIGHTS <= 11'-0"
SCALE: NTS
NOTE: 12'-0" COLUMN HEIGHT FOR BUILDING WIDTHS <= 40'-0" AND WIND SPEED <= 150 MPH

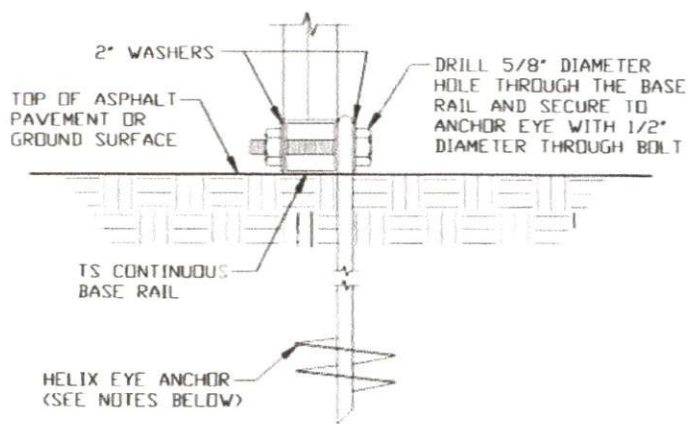
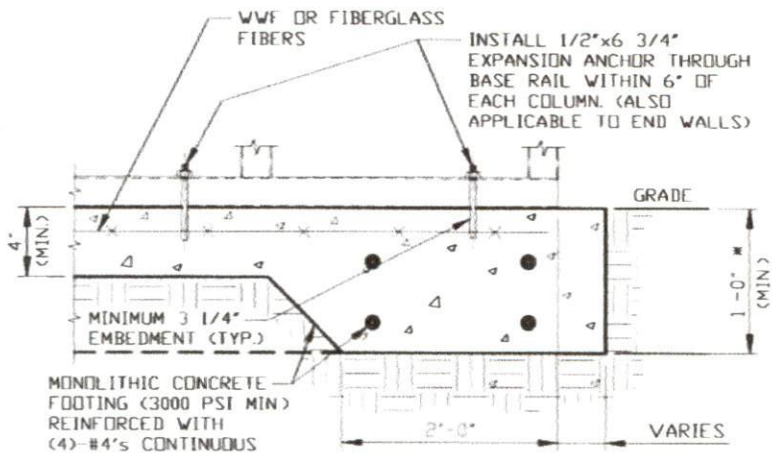


**MOORE AND ASSOCIATES
ENGINEERING AND CONSULTING, INC.**

DRAWN BY: LT
CHECKED BY: PDH

LUNA METAL BUILDINGS
468 N FAYETTEVILLE ST.
ASHEBORO, NC 27203
31'-0"-50'-0"x16'-0" RC II ENCLOSED STRUCTURE

BASE RAIL ANCHORAGE OPTIONS



2

CONCRETE MONOLITHIC SLAB BASE RAIL ANCHORAGE

SCALE: NTS
(MINIMUM ANCHOR EDGE DISTANCE IS 4")
* COORDINATE WITH LOCAL BUILDING CODE
AND/OR BUILDING OFFICIAL REGARDING
REQUIRED FOOTING DEPTH.

2A

GROUND BASE HELIX ANCHORAGE

SCALE: NTS
(CAN BE USED FOR ASPHALT)
* COORDINATE WITH LOCAL CODES/ORD
REGARDING MIN. FROST DEPTH (LENGTH)

GENERAL NOTES

NOTE: CONCRETE MONOLITHIC SLAB DESIGN BASED ON MINIMUM SOIL BEARING CAPACITY OF 1,500 PSF

CONCRETE:

CONCRETE SHALL HAVE A MINIMUM SPECIFIED COMPRESSIVE STRENGTH OF 3,000 PSI AT 28 DAYS.

COVER OVER REINFORCING STEEL:

FOR FOUNDATIONS, MINIMUM CONCRETE COVER OVER REINFORCING BARS SHALL BE PER ACI-318: 3 INCHES IN FOUNDATIONS WHERE THE CONCRETE IS CAST AGAINST AND PERMANENTLY IN CONTACT WITH THE EARTH OR EXPOSED TO THE EARTH OR WEATHER, AND 1 1/2 INCHES ELSEWHERE.

REINFORCING STEEL:

THE TURNDOWN REINFORCING STEEL SHALL BE ASTM A615, GRADE 60 THE SLAB REINFORCEMENT SHALL BE WELDED WIRE FABRIC MEETING ASTM A185 OR FIBERGLASS FIBER REINFORCEMENT

REINFORCEMENT MAY BE BENT IN THE SHOP OR THE FIELD PROVIDED:

- 1 REINFORCEMENT IS BENT COLD
- 2 THE DIAMETER OF THE BEND, MEASURED ON THE INSIDE OF THE BAR, IS NOT LESS THAN SIX-BAR DIAMETERS
- 3 REINFORCEMENT PARTIALLY EMBEDDED IN CONCRETE SHALL NOT BE FIELD BENT

HELIX ANCHOR NOTES:

- 1 FOR VERY DENSE AND/OR CEMENTED SANDS, COARSE GRAVEL AND COBBLES, CALICHE, PRELOADED SILTS AND CLAYS USE MINIMUM (2) 4" HELICES WITH MINIMUM 30 INCH EMBEDMENT
- 2 FOR CORAL USE MINIMUM (2) 4" HELICES WITH MINIMUM 30 INCH EMBEDMENT.
- 3 FOR MEDIUM DENSE COARSE SANDS, SANDY GRAVELS, VERY STIFF SILTS AND CLAYS USE MINIMUM (2) 4" HELICES WITH MINIMUM 30 INCH EMBEDMENT
- 4 FOR LOOSE TO MEDIUM DENSE SANDS, FIRM TO STIFF CLAYS AND SILTS ALLUVIAL FILL USE MINIMUM (2) 6" HELICES WITH MINIMUM 50 INCH EMBEDMENT.
- 5 FOR VERY LOOSE TO MEDIUM DENSE SANDS, FIRM TO STIFFER CLAYS AND SILTS, ALLUVIAL FILL USE MINIMUM (2) 8" HELICES WITH MINIMUM 60 INCH EMBEDMENT

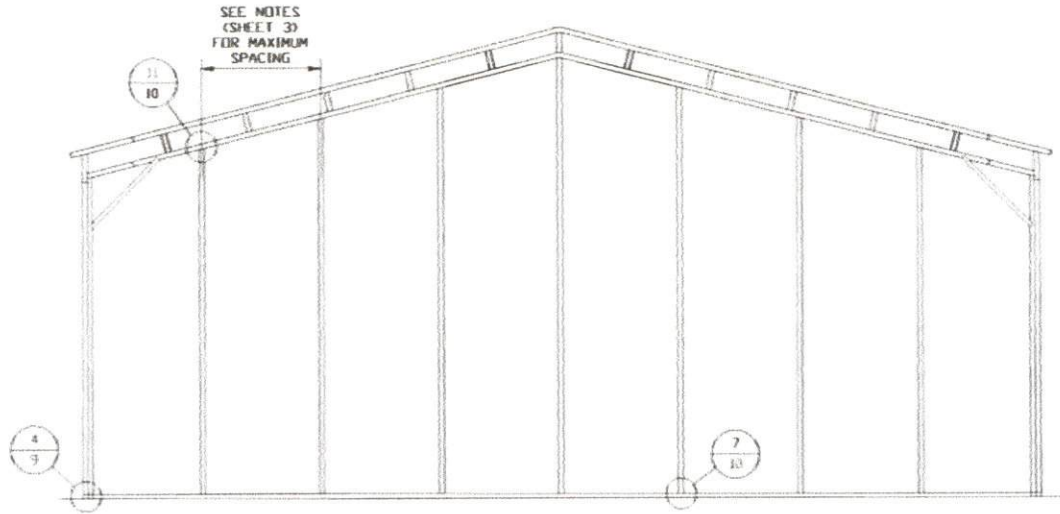
**MOORE AND ASSOCIATES
ENGINEERING AND CONSULTING, INC.**

DRAWN BY: LT

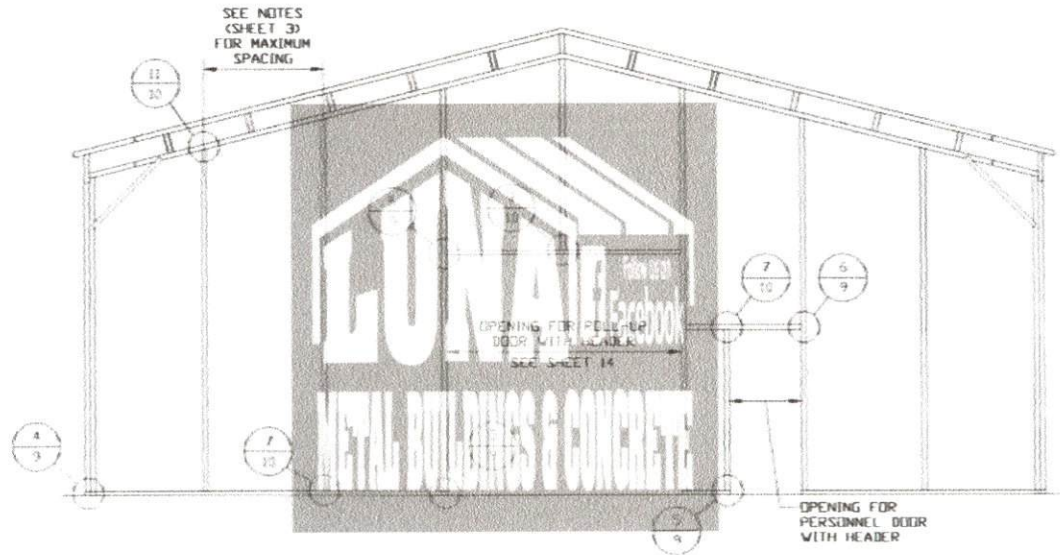
CHECKED BY: PDH

**LUNA METAL BUILDINGS
468 N FAYETTEVILLE ST.
ASHEBORO, NC 27203
31'-0"-50'-0" x 16'-0" RC II ENCLOSED STRUCTURE**

END WALL AND END WALL OPENINGS



TYPICAL BOX EAVE RAFTER END WALL FRAMING SECTION
SCALE: NTS



TYPICAL BOX EAVE RAFTER END WALL OPENINGS FRAMING SECTION
SCALE: NTS

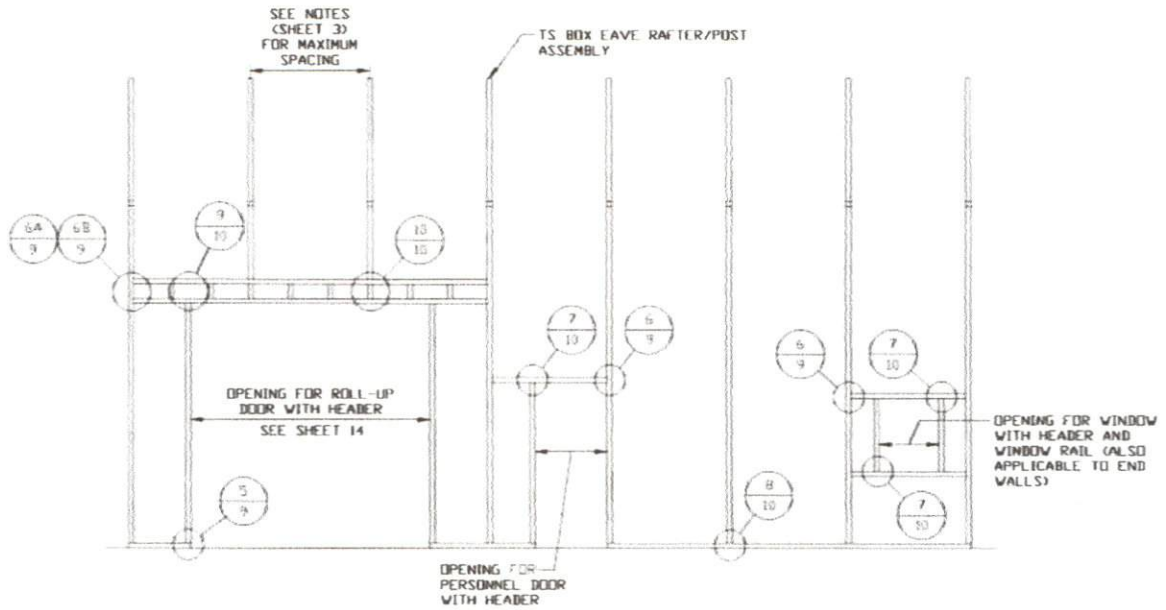
**MOORE AND ASSOCIATES
ENGINEERING AND CONSULTING, INC.**

DRAWN BY: LT

CHECKED BY: PDH

LUNA METAL BUILDINGS
468 N FAYETTEVILLE ST.
ASHEBORO, NC 27203
31'-0"-50'-0" x 16'-0" RC II ENCLOSED STRUCTURE

SIDE WALL OPENINGS



TYPICAL BOX EAVE RAFTER SIDE WALL OPENINGS FRAMING SECTION

SCALE: NTS



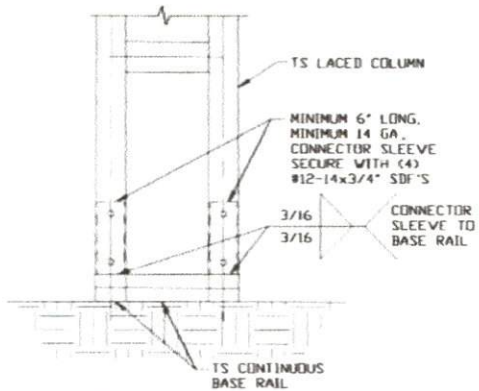
**MOORE AND ASSOCIATES
ENGINEERING AND CONSULTING, INC.**

DRAWN BY: LT

CHECKED BY: PDH

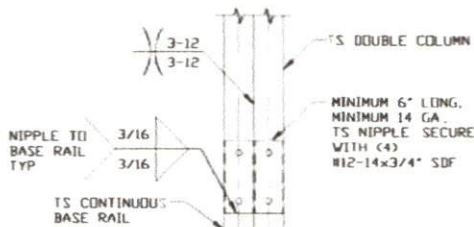
**LUNA METAL BUILDINGS
468 N FAYETTEVILLE ST.
ASHEBORO, NC 27203
31'-0"-50'-0" x 16'-0" RC II ENCLOSED STRUCTURE**

CONNECTION DETAILS



3 COLUMN/BASE RAIL CONNECTION DETAIL

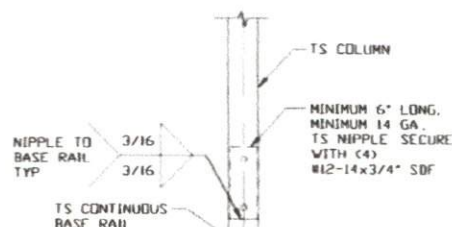
SCALE: NTS



3A

COLUMN/BASE RAIL CONNECTION DETAIL

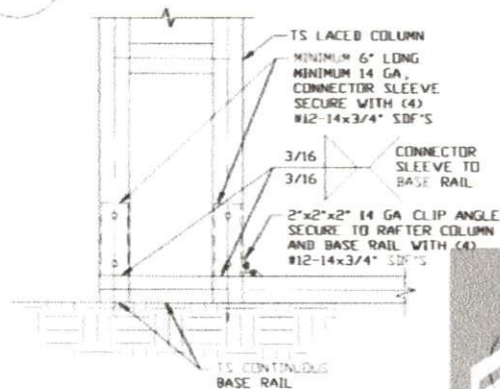
SCALE: NTS



3B

COLUMN/BASE RAIL CONNECTION DETAIL

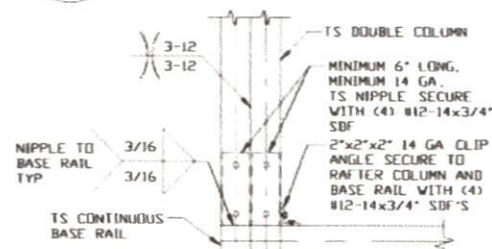
SCALE: NTS



4

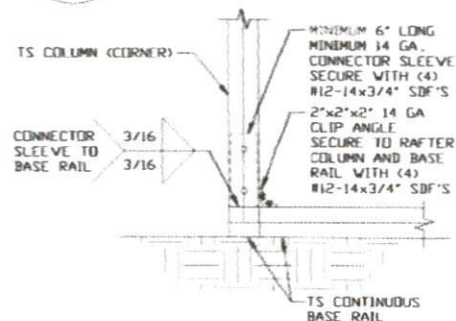
END COLUMN/BASE RAIL CONNECTION DETAIL

SCALE: NTS



4A END COLUMN/BASE RAIL CONNECTION DETAIL

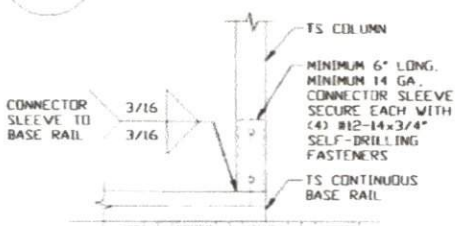
SCALE: NTS



4B

END COLUMN/BASE RAIL CONNECTION DETAIL

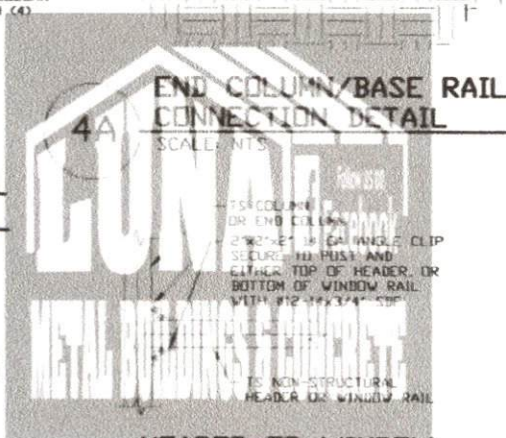
SCALE: NTS



5

COLUMN/BASE RAIL CONNECTION DETAIL

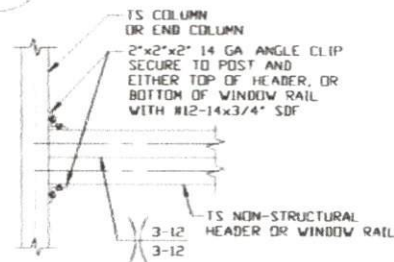
SCALE: NTS



6

HEADER OR WINDOW RAIL/WALL GIRTS TO COLUMN CONNECTION DETAIL

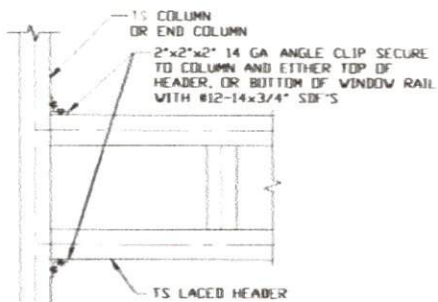
SCALE: NTS



6A

DOUBLE HEADER/COLUMN CONNECTION DETAIL

SCALE: NTS



6B

LACED HEADER/COLUMN CONNECTION DETAIL

SCALE: NTS

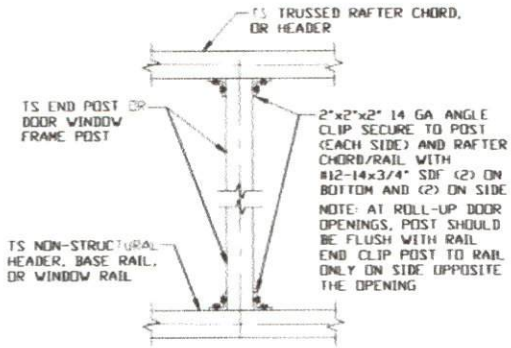
MOORE AND ASSOCIATES ENGINEERING AND CONSULTING, INC.

DRAWN BY: LT

CHECKED BY: PDH

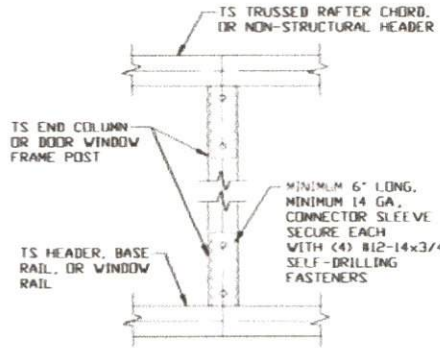
LUNA METAL BUILDINGS
468 N FAYETTEVILLE ST.
ASHEBORO, NC 27203
31'-0"-50'-0" x 16'-0" RC II ENCLOSED STRUCTURE

CONNECTION DETAILS



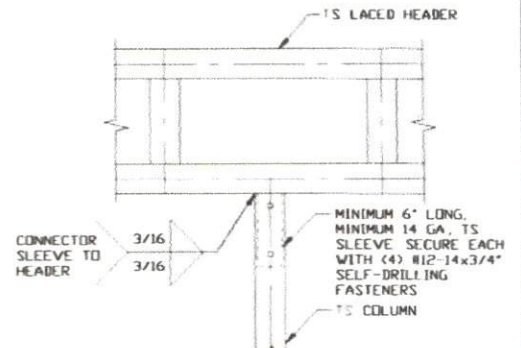
7 POST TO HEADER, BASE RAIL, OR WINDOW RAIL CONNECTION DETAIL

SCALE: NTS



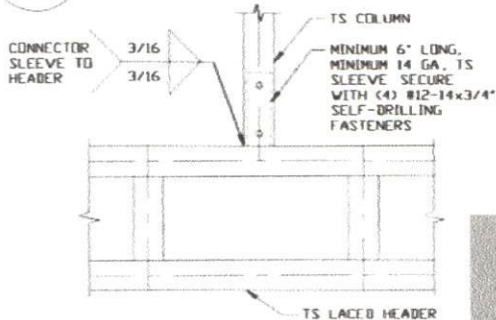
8 COLUMN TO HEADER OR BASE RAIL CONNECTION DETAIL

SCALE: NTS



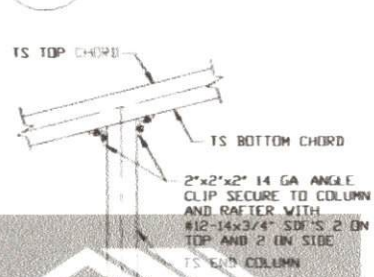
9 LACED HEADER/COLUMN CONNECTION DETAIL

SCALE: NTS

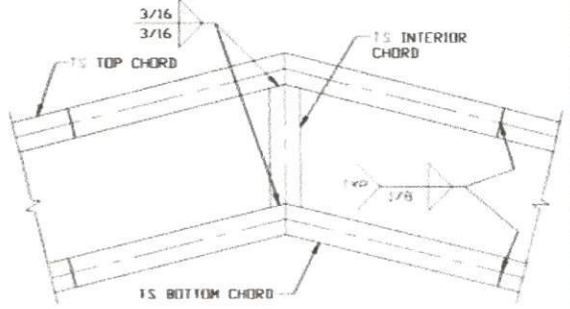


10 COLUMN/DOUBLE HEADER CONNECTION DETAIL

SCALE: NTS

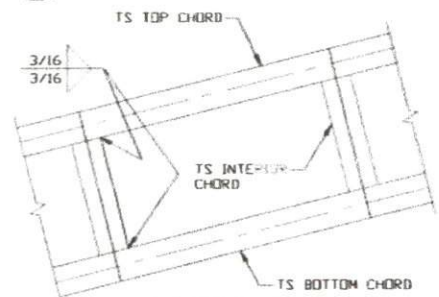


11 END COLUMN/RAFTER CONNECTION DETAIL



12 CENTER INTERIOR CHORD TO TOP AND BOTTOM CHORD CONNECTION DETAIL

SCALE: NTS



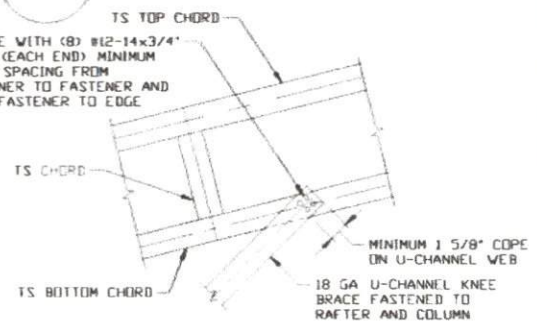
13 INTERIOR CHORD TO TOP AND BOTTOM CHORD CONNECTION DETAIL

SCALE: NTS



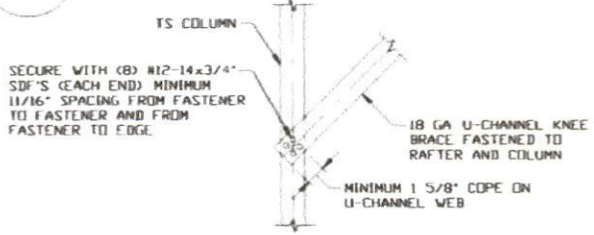
14 U-CHANNEL BRACE CONNECTION DETAIL

SCALE: NTS



15 U-CHANNEL TO RAFTER CONNECTION DETAIL

SCALE: NTS



16 U-CHANNEL TO COLUMN CONNECTION DETAIL

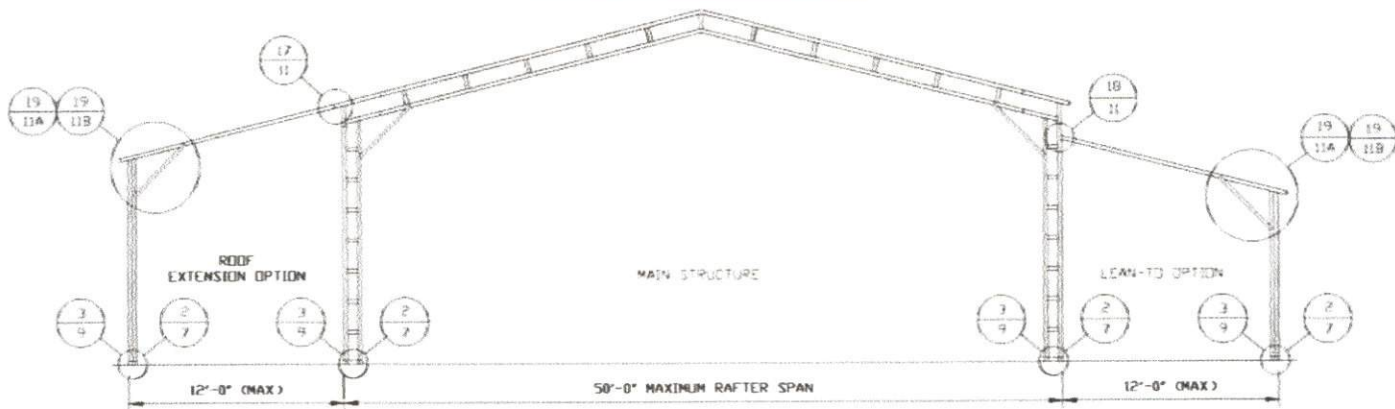
SCALE: NTS

MOORE AND ASSOCIATES ENGINEERING AND CONSULTING, INC.

DRAWN BY: LT
CHECKED BY: PDM

LUNA METAL BUILDINGS
468 N FAYETTEVILLE ST.
ASHEBORO, NC 27203
31'-0"-50'-0"x16'-0" RC II ENCLOSED STRUCTURE

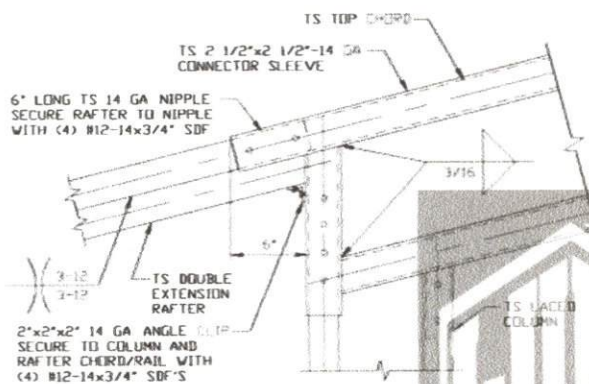
LEAN-TO OPTIONS



TYPICAL BOX EAVE RAFTER LEAN-TO OPTIONS FRAMING SECTION (BOTH OPTIONS SHOWN)

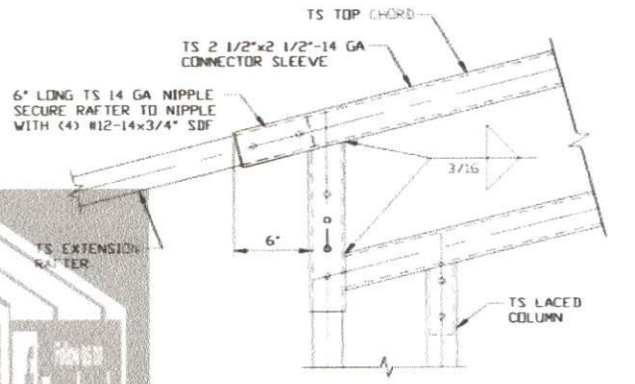
SCALE: NTS

REFERENCE RAFTER COLUMN CONNECTION DETAILS FOR APPROPRIATE COLUMN HEIGHT AND TUBING SPECIFICATION



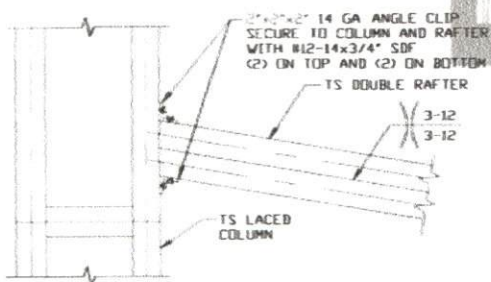
17 SIDE EXTENSION RAFTER/COLUMN
DETAIL FOR RAFTER SPANS
10'-0" < TO ≤ 12'-0"

SCALE: NTS



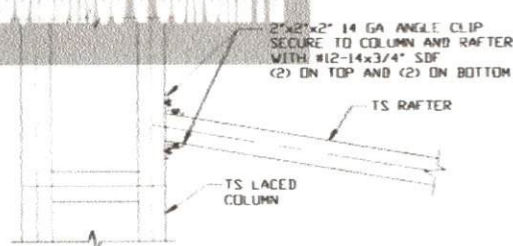
17A SIDE EXTENSION RAFTER/COLUMN
DETAIL FOR RAFTER SPANS ≤ 10'-0"

SCALE: NTS



18 LEAN-TO RAFTER TO RAFTER
COLUMN CONNECTION DETAIL
FOR RAFTER SPAN
10'-0" < TO ≤ 12'-0"

SCALE: NTS



18A LEAN-TO RAFTER TO RAFTER
COLUMN CONNECTION DETAIL
FOR RAFTER SPAN ≤ 10'-0"

SCALE: NTS

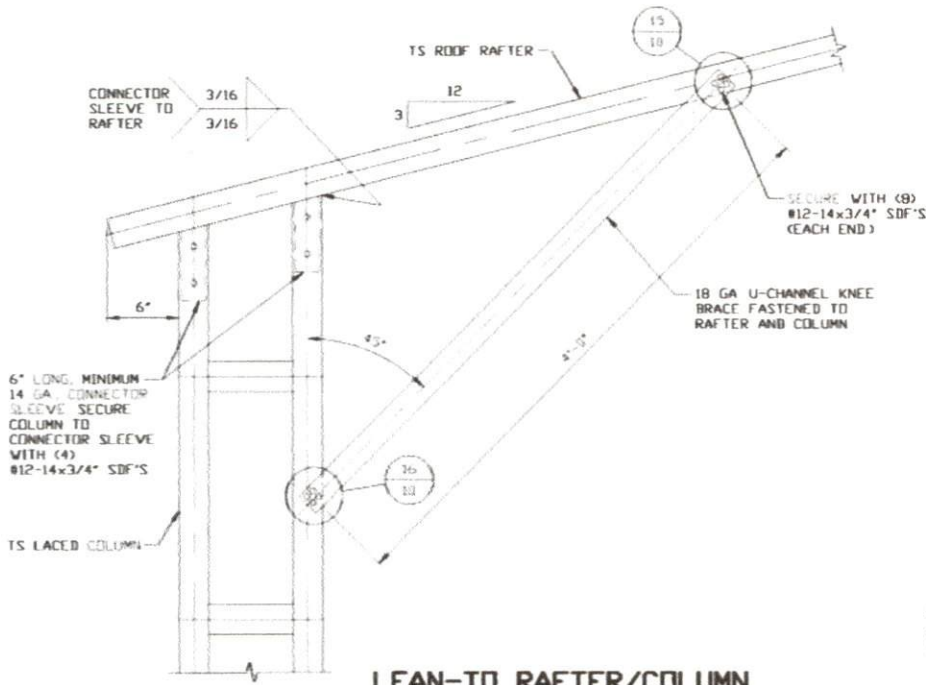
**MOORE AND ASSOCIATES
ENGINEERING AND CONSULTING, INC.**

DRAWN BY: LT

CHECKED BY: PDH

LUNA METAL BUILDINGS
468 N FAYETTEVILLE ST.
ASHEBORO, NC 27203
31'-0"-50'-0"x16'-0" RC II ENCLOSED STRUCTURE

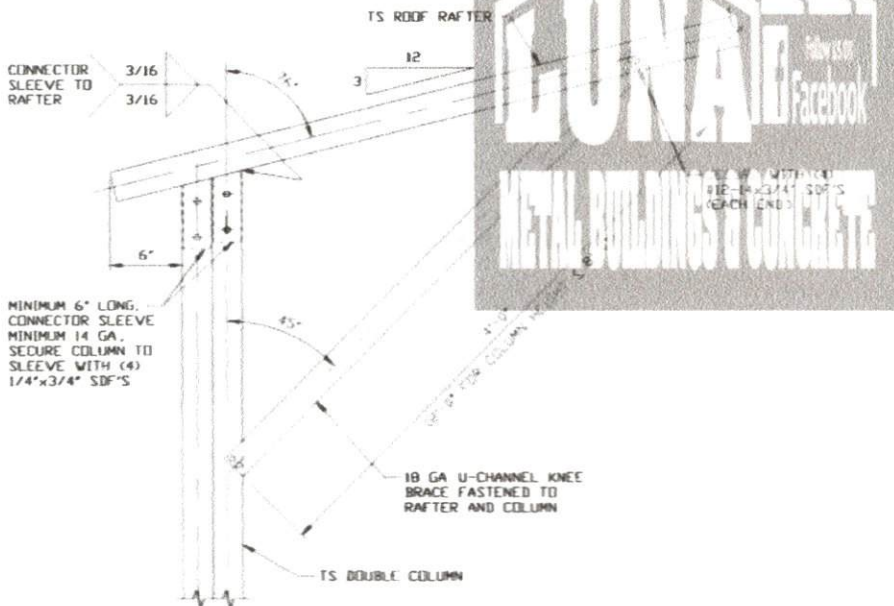
LEAN-TO OPTIONS FOR RAFTER SPANS ≤ 10'-0"



LEAN-TO RAFTER/COLUMN CONNECTION DETAIL FOR HEIGHTS 11'-0" < TO < 16'-0"

19

SCALE: NTS



LEAN-TO RAFTER/COLUMN CONNECTION DETAIL FOR HEIGHTS < 11'-0"

19A

SCALE: NTS

NOTE: 12'-0" COLUMN HEIGHT FOR BUILDING WIDTHS < 40'-0" AND WIND SPEED < 150 MPH.

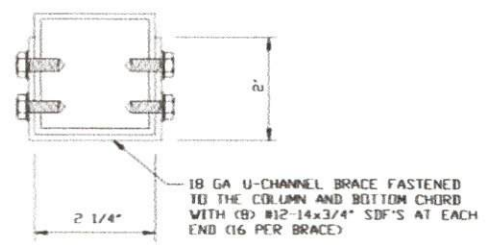
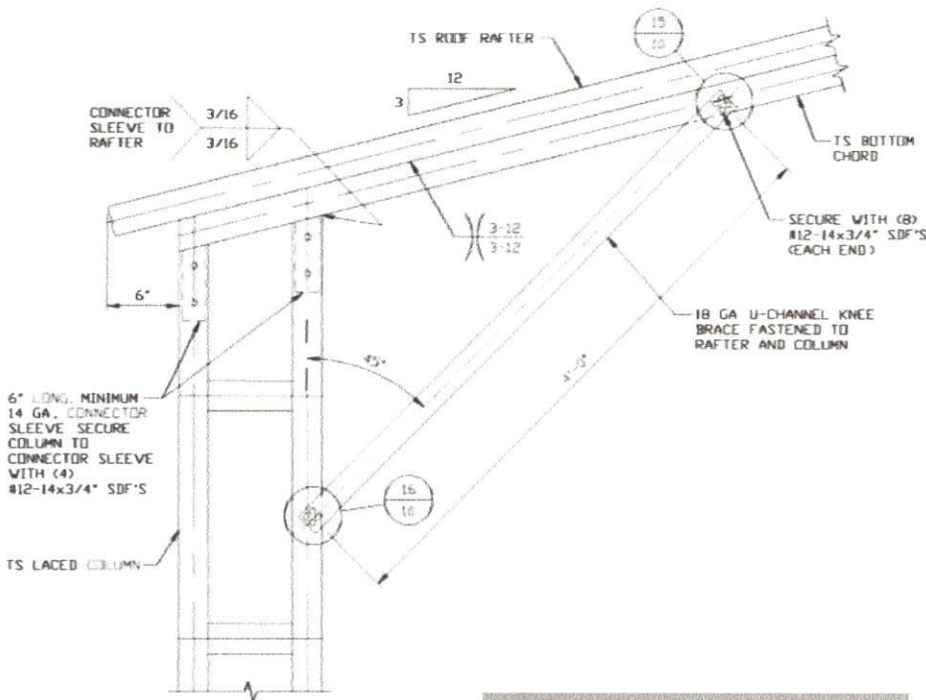
**MOORE AND ASSOCIATES
ENGINEERING AND CONSULTING, INC.**

DRAWN BY: LT

CHECKED BY: PDH

LUNA METAL BUILDINGS
468 N FAYETTEVILLE ST.
ASHEBORO, NC 27203
31'-0"-50'-0"x16'-0" RC II ENCLOSED STRUCTURE

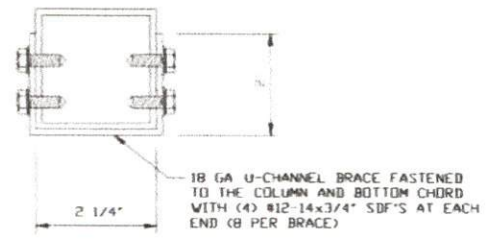
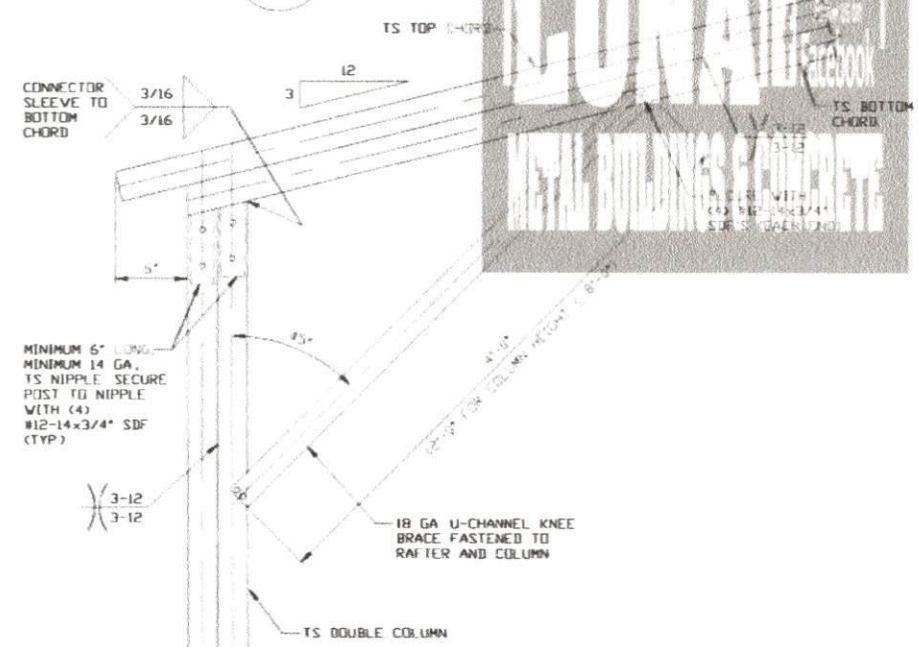
LEAN-TO OPTIONS FOR RAFTER SPANS 10'-0" < TO ≤ 12'-0"



BRACE SECTION
SCALE: NTS

LEAN-TO RAFTER/COLUMN CONNECTION DETAIL FOR HEIGHTS 11'-0" < TO < 16'-0"

19B
SCALE: NTS



BRACE SECTION
SCALE: NTS

LEAN-TO RAFTER/COLUMN CONNECTION DETAIL FOR HEIGHTS < 11'-0"

19C
SCALE: NTS

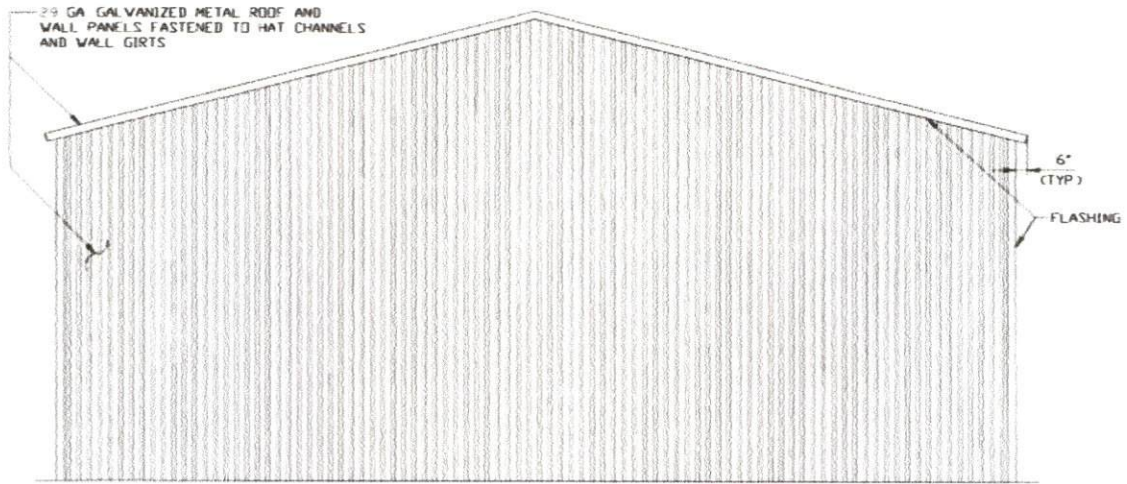
NOTE: 12'-0" COLUMN HEIGHT FOR BUILDING WIDTHS < 40'-0" AND WIND SPEED < 150 MPH

**MOORE AND ASSOCIATES
ENGINEERING AND CONSULTING, INC.**

DRAWN BY: LT
CHECKED BY: PDH

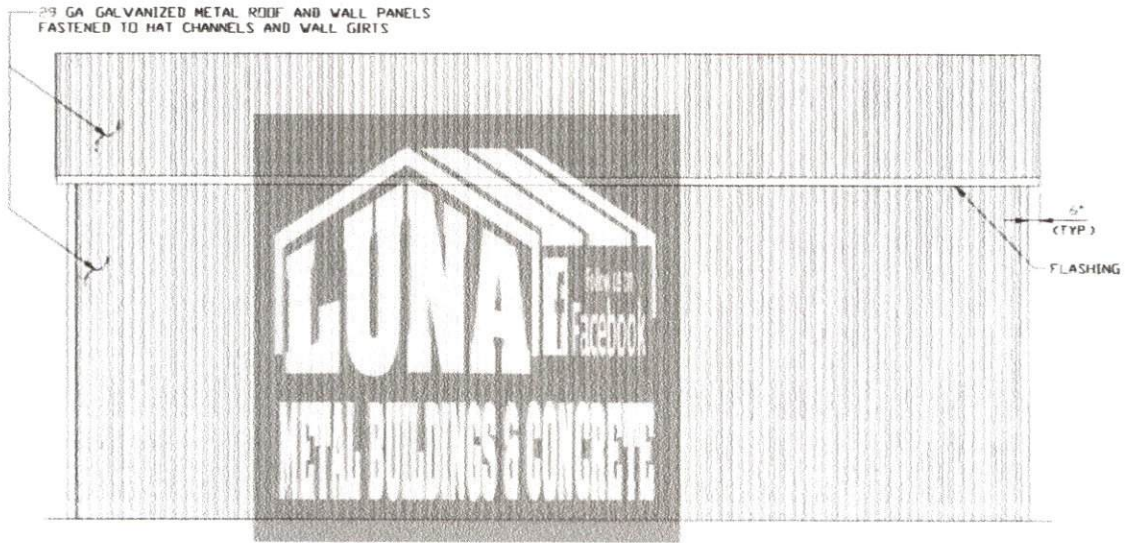
LUNA METAL BUILDINGS
468 N FAYETTEVILLE ST.
ASHEBORO, NC 27203
31'-0"-50'-0"x16'-0" RC II ENCLOSED STRUCTURE

VERTICAL ROOF/SIDING OPTION



TYPICAL END ELEVATION VERTICAL ROOF/SIDING

SCALE: NTS



TYPICAL SIDE ELEVATION VERTICAL ROOF/SIDING

SCALE: NTS

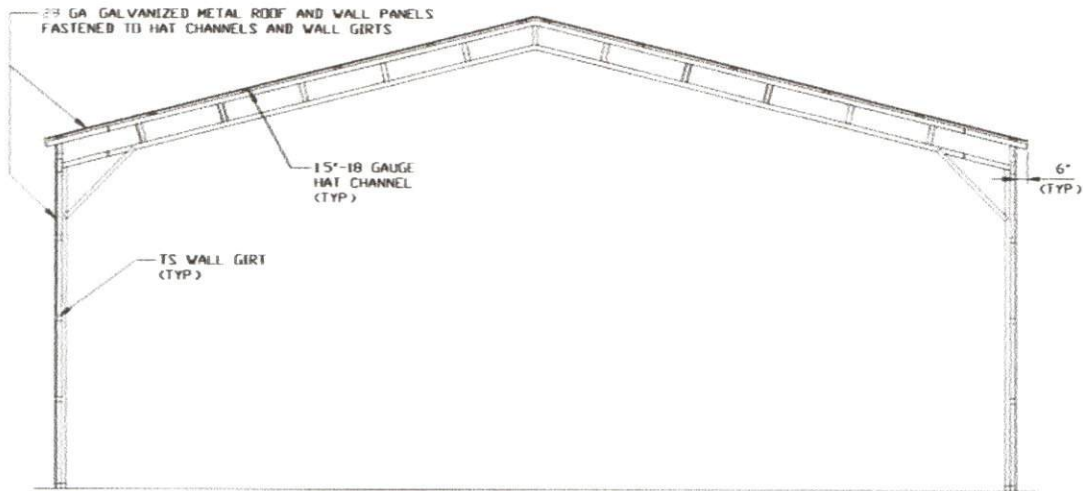
**MOORE AND ASSOCIATES
ENGINEERING AND CONSULTING, INC.**

DRAWN BY: LT

CHECKED BY: PDH

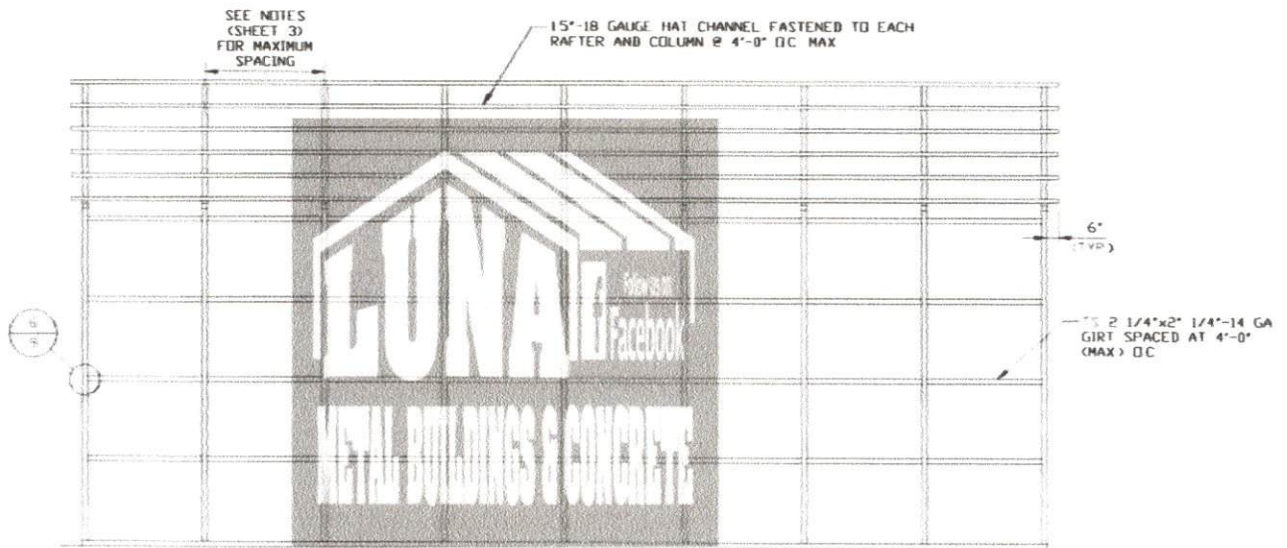
**LUNA METAL BUILDINGS
468 N FAYETTEVILLE ST.
ASHEBORO, NC 27203
31'-0"-50'-0" x 16'-0" RC II ENCLOSED STRUCTURE**

VERTICAL ROOF/SIDING OPTION



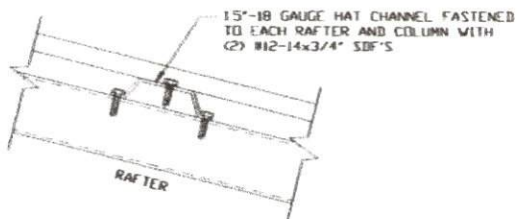
TYPICAL END SECTION VERTICAL ROOF/SIDING

SCALE: NTS



TYPICAL FRAMING SECTION VERTICAL ROOF/SIDING

SCALE: NTS



PANEL ATTACHMENT

(ALTERNATE FOR VERTICAL ROOF PANELS)

SCALE: NTS

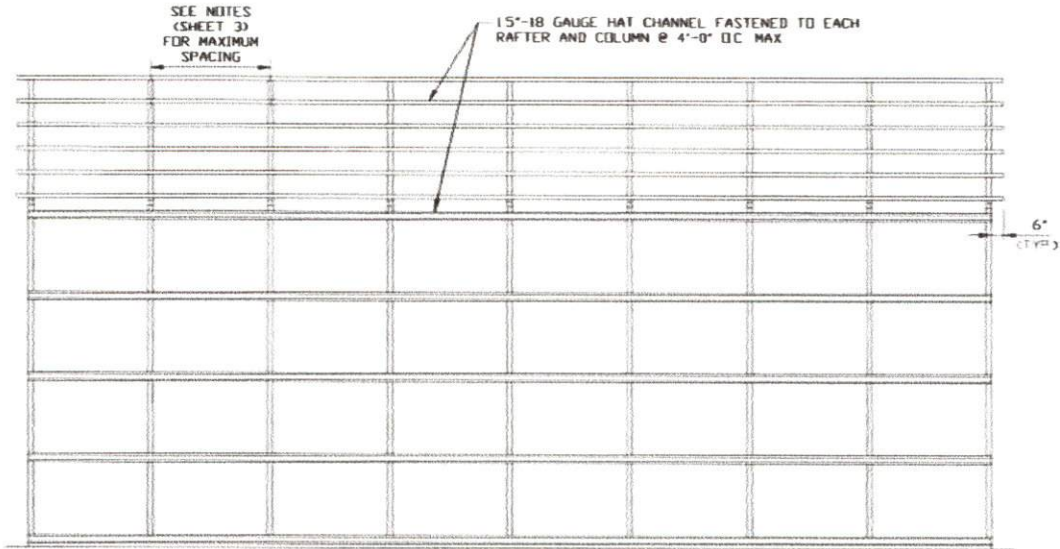
**MOORE AND ASSOCIATES
ENGINEERING AND CONSULTING, INC.**

DRAWN BY: LT

CHECKED BY: PDH

**LUNA METAL BUILDINGS
468 N FAYETTEVILLE ST.
ASHEBORO, NC 27203
31'-0"-50'-0" x 16'-0" RC II ENCLOSED STRUCTURE**

VERTICAL ROOF/SIDING OPTION



OPTIONAL FRAMING SECTION VERTICAL ROOF/SIDING OPTION

SCALE: NTS



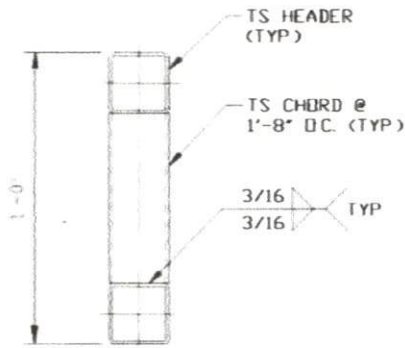
MOORE AND ASSOCIATES
ENGINEERING AND CONSULTING, INC.

DRAWN BY: LT

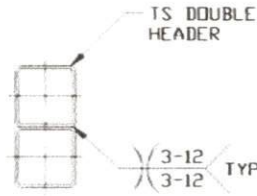
CHECKED BY: PDH

LUNA METAL BUILDINGS
468 N FAYETTEVILLE ST.
ASHEBORO, NC 27203
31'-0"-50'-0" x 16'-0" RC II ENCLOSED STRUCTURE

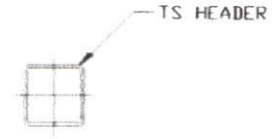
SIDE WALL HEADER OPTIONS



**HEADER DETAIL FOR DOOR
OPENINGS 6'-0" < TO ≤ 14'-0"**
SCALE: NTS

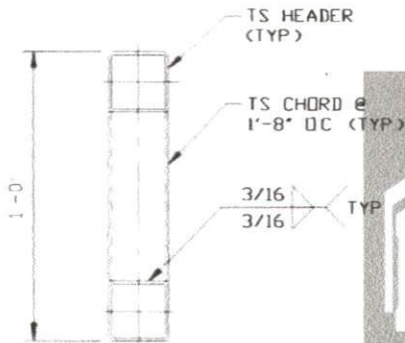


**HEADER DETAIL FOR DOOR
OPENINGS 4'-0" < TO ≤ 6'-0"**
SCALE: NTS

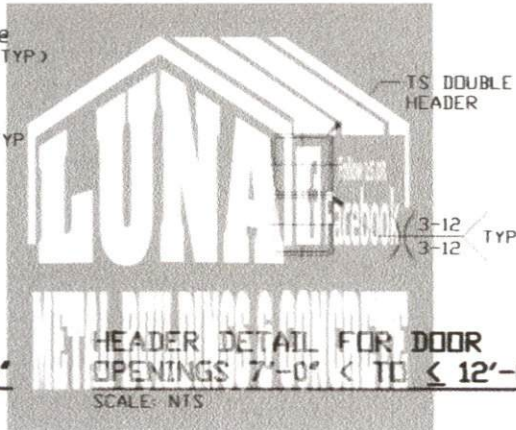


**HEADER DETAIL FOR
DOOR OPENINGS ≤ 4'-0"**
SCALE: NTS

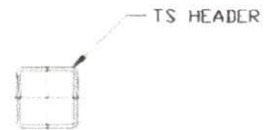
END WALL HEADER OPTIONS



**HEADER DETAIL FOR DOOR
OPENINGS 12'-0" < TO ≤ 14'-0"**
SCALE: NTS



**HEADER DETAIL FOR DOOR
OPENINGS 7'-0" < TO ≤ 12'-0"**
SCALE: NTS



**HEADER DETAIL FOR
DOOR OPENINGS ≤ 7'-0"**
SCALE: NTS

**MOORE AND ASSOCIATES
ENGINEERING AND CONSULTING, INC.**

DRAWN BY: LT

CHECKED BY: PDH

**LUNA METAL BUILDINGS
468 N FAYETTEVILLE ST.
ASHEBORO, NC 27203
31'-0" x 50'-0" x 16'-0" RC II ENCLOSED STRUCTURE**