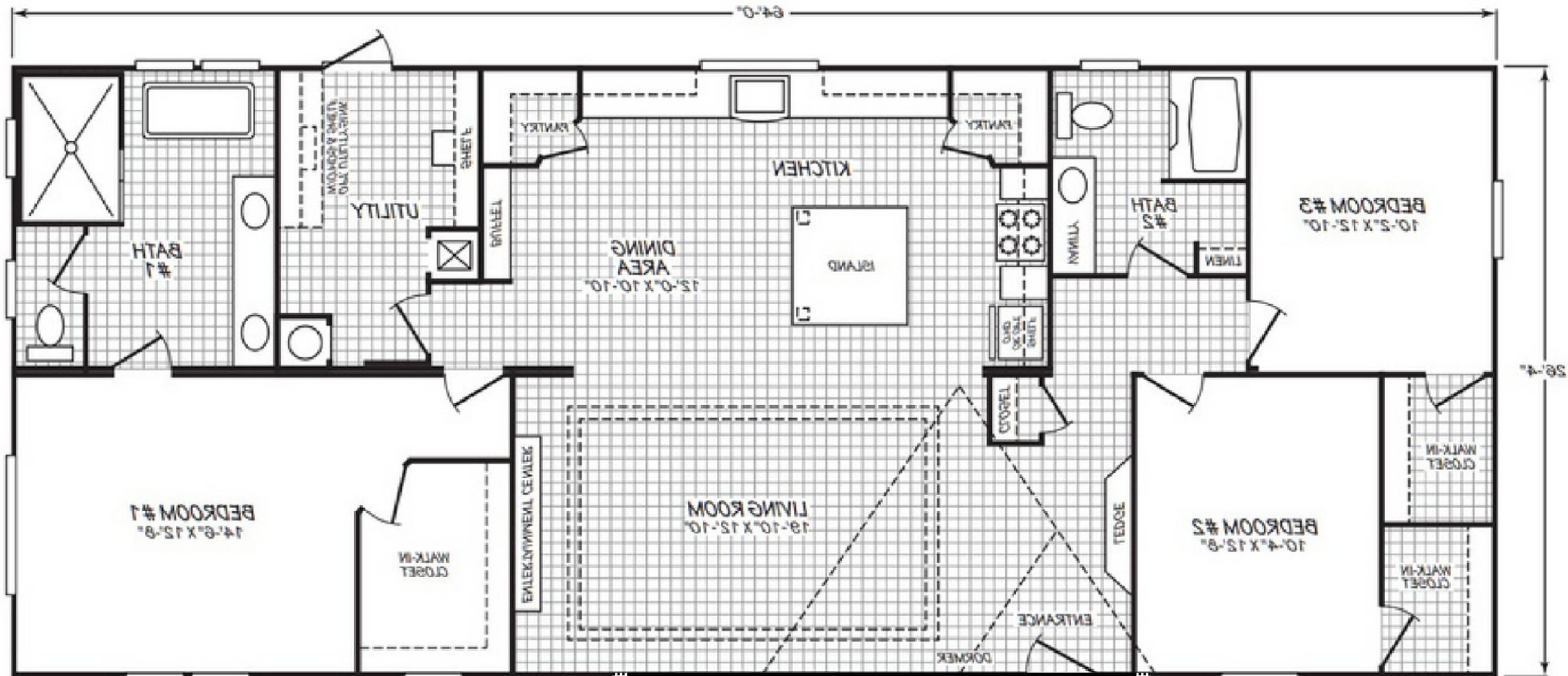


636 Avery Road, Erwin, NC - WADE Project

22'x6' Masonry Deck with Concrete Cap

Contact: Brandon Johnson
 (252.412.2479 - ops111@cavco.com)



Continuous Angle Iron
 3 1/2" x 3 1/2" x 1/4"

8" x 16" Piers @ 6' O.C.
 on 24" x 24" x 8" Footings

