

# NATHAN'S OUTDOOR PRODUCTS

305 Furr Street  
South Hill, Virginia 23970  
Phone 434-955-2000  
434-771-0446  
2393 North Garnett Street  
Henderson, NC 27536  
Phone 252-438-7576

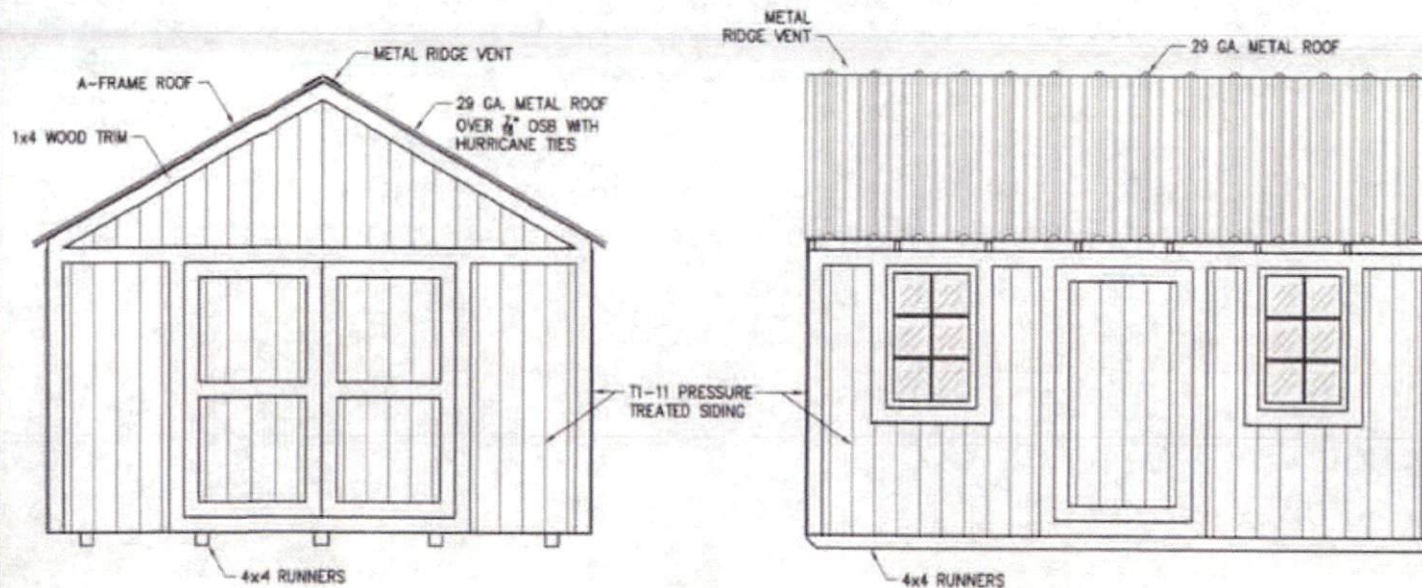
## DESIGN DATA

WIDTHS: 8', 10' OR 12'  
WALL HEIGHTS: 4', 6' OR 8'  
WIND SPEED: 130 MPH  
GROUND SNOW: 50 PSF  
DEAD LOAD: 10 PSF  
LIVE LOAD: 100 PSF  
ROOF LIVE LOAD: 30 PSF

ALL DIMENSIONAL LUMBER SHALL BE PRESSURE TREATED SOUTHERN YELLOW PINE OR BETTER.

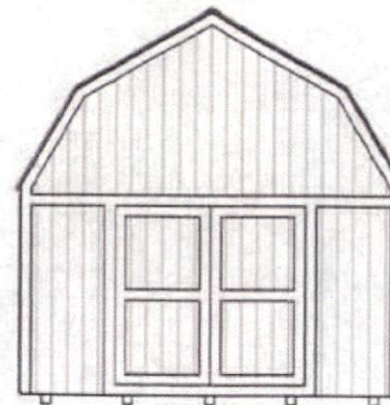
PROVIDE A MINIMUM OF FOUR HELICAL GROUND ANCHORS. MAXIMUM ANCHOR SPACING IS 12'-0".

THE OWNER IS RESPONSIBLE FOR COMPLYING WITH LOCAL BUILDING CODE REQUIREMENTS.



NOTE:  
THIS STRUCTURE IS IN COMPLIANCE WITH THE 2012 INTERNATIONAL RESIDENTIAL CODE. LOADS ARE IN ACCORDANCE WITH ASCE/SEI 7-10.

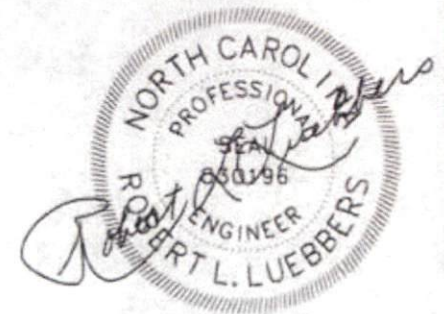
|                                     |                   |                 |
|-------------------------------------|-------------------|-----------------|
| WIND SPEED (3 SECOND WIND GUST)     | 130 MPH (170 UH.) |                 |
| IMPORTANCE FACTOR                   | WIND              | 0.77            |
|                                     | SNOW              | 0.8             |
|                                     | SEISMIC           | 1.0             |
| BUILDING CATEGORY (UTILITY/STORAGE) | I                 |                 |
| EXPOSURE                            | C                 |                 |
| INTERNAL PRESSURE COEFFICIENT       | ±0.55             |                 |
| COMPONENT AND CLADDING PRESSURE     | WALLS             | +37.8/-47.5 PSF |
|                                     | ROOF              | +25.6/-76.8 PSF |
| STRUCTURE TYPE                      | ENCLOSED          |                 |
| GROUND SNOW LOAD                    | 50 PSF            |                 |
| SEISMIC DESIGN CATEGORY             | D2                |                 |



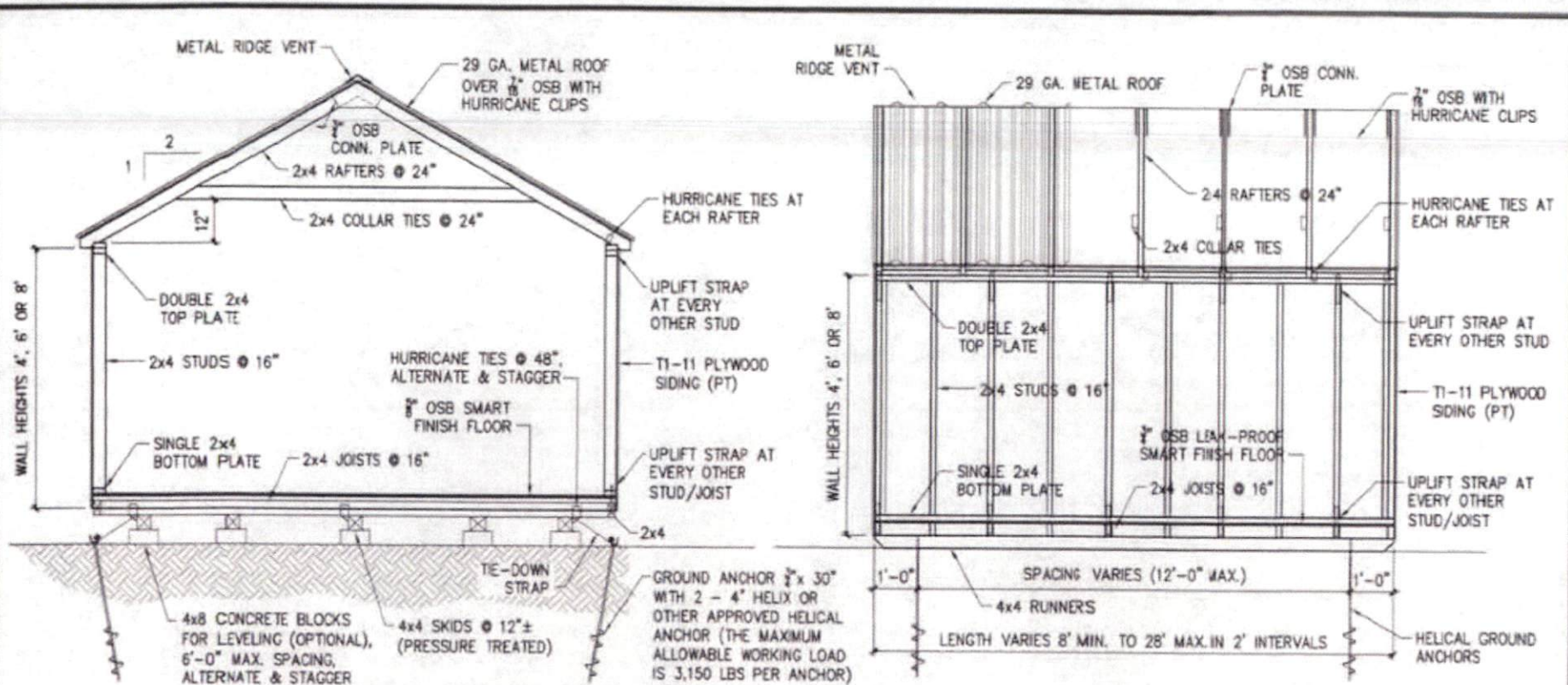
OPTIONAL  
BARN ROOF

\* WIND SPEED:  $V_{red} = V_{ult} \times \sqrt{0.6}$   
ASCE 7-05 USES WIND SPEED WITH  
3 SECOND GUST FACTOR,  
ASCE 7-10 USES ULTIMATE WIND SPEED.

## TIMBER STORAGE SHED



02/24/2014



NOTE: PROVIDE HURRICANE TIES AT EVERY RAFTER.  
 PROVIDE UPLIFT STRAPS AT EVERY OTHER STUD/JOIST.

