




**GREG ROBINSON, P.E.**  
CONSULTING ENGINEER

6512 Six Forks Road, Suite 403A  
Raleigh, North Carolina 27615

919.846.4752  
info@gar-pe.com

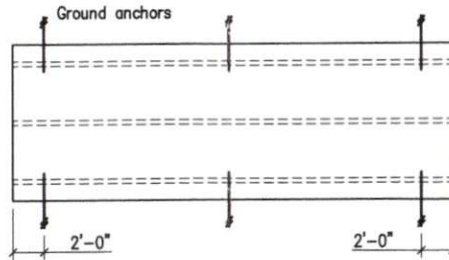
THE **Shed Depot**  
OF NORTH CAROLINA



1732 Westover Drive  
Sanford, North Carolina 27330

919.776.0206  
info@sheddepotnc.com

**10'-0" x 10'-0" to 10'-0" x 28'-0"**  
**A-Frame Shed**



Ground Anchors

(Ground Anchors) Scale: 1/8"=1'-0"

**Ground Anchor Schedule** (ANCHOR SCHED)

Building Length	Number of Ground Anchors Each Long Side
30 ft - 36 ft	3
12 ft - 28 ft	2

Notes:

1. Minimum uplift capacity of each anchor: 2,300 pounds
2. Install ground anchors and strapping in accordance with manufacturer's instructions



GENERAL NOTES AND OUTLINE SPECIFICATIONS

01000 GENERAL

1. Design Live Loads  
Floor 40 psf  
Roof 20 psf
2. Ground Snow Loads (2018 NC Building Code, 2015 IBC, ASCE 7-10)  
Ground Snow Load: 15 psf
3. Wind loads (2018 NC Building Code, 2015 IBC, ASCE 7-10)  
Basic Wind Velocity (ultimate): 120 mph; Exposure: C; Category III
4. Lateral design controlled by Wind Loads.

02000 FOUNDATION

1. Design soil bearing capacity: 2,000 psf (presumed).

06090 PRE-ENGINEERED WOOD CONNECTORS

1. Connectors shall be hot-dipped galvanized or electro-plated galvanized with a minimum coating of G90.
2. Nails shall be "common" unless otherwise noted in the drawings.

06110 WOOD FRAMING

1. Unless noted otherwise: kiln-dried, S-P-F, #2 grade, surfaced dry, 15 percent maximum moisture content.  
Floor joists: preservative-treated, kiln-dried, Southern Pine, #2 grade, surfaced dry, 15 percent maximum moisture content.  
Mud sills: preservative treated, kiln-dried, Southern Pine, #2 grade, surfaced dry, 19 percent maximum moisture content.
2. Nail sizes: Pennyweight Length Diameter  
(inches) (inches)  
8d 2.5 0.131  
10d 3 0.148  
12d 3.25 0.148

06120 STRUCTURAL WOOD PANELS

1. Sheathing shall conform to the grading rules of U.S. Product Standard PS 1, latest edition, and shall have appropriate grade trade mark of an American Plywood Association approved agency on each plywood panel. Sheathing shall be APA rated sheathing in thicknesses and span ratings shown drawings. Sheathing shall be applied in full sheets or in largest pieces practical for the area being covered.
2. Particleboard sheathing: ANSI A208.1 APA Oriented Strand Board; wood flakes set with waterproof resin binder; unsanded faces.
3. Secure roof sheathing perpendicular to framing members with ends staggered and sheet ends over firm bearing.
4. Secure wall sheathing with long dimension parallel to wall studs, with ends over firm bearing and staggered.
5. Install sheathing two span continuous minimum.

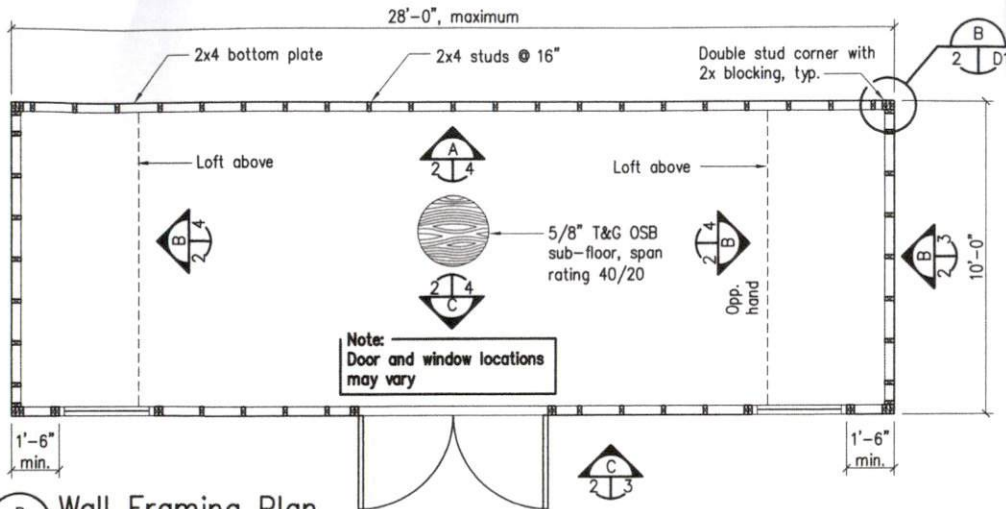
DRAWING INDEX:

- C1 Cover Sheet and General Notes
- 2 Floor and Wall Framing Plans
- 3 Roof Framing Plans and Exterior Elevations
- 4 Wall Framing Elevations and Wall Section
- D1 Details
- D2 Details

GARPE Project #19009  
Date: 24APR19

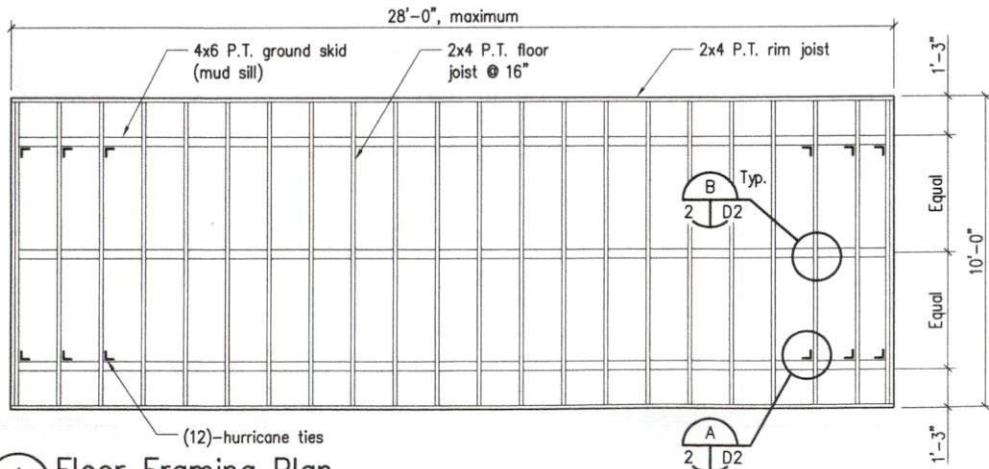
SHT\_C1

**C1**  
1 of 6



**Wall Framing Plan**

(W1\_Framing\_Pln) Scale: 1/4"=1'-0"



**Floor Framing Plan**

(F1\_Framing\_Pln) Scale: 1/4"=1'-0"

NORTH CAROLINA  
PROFESSIONAL  
SEAL  
13779  
ENGINEER  
GREGORY A. ROBINSON

*Gregory A. Robinson*

28AUG19

**The SHED Dept.**  
Creating Space. Storing Treasures.

**GREG ROBINSON, P.E.**  
CORRUPTING EXPERTISE

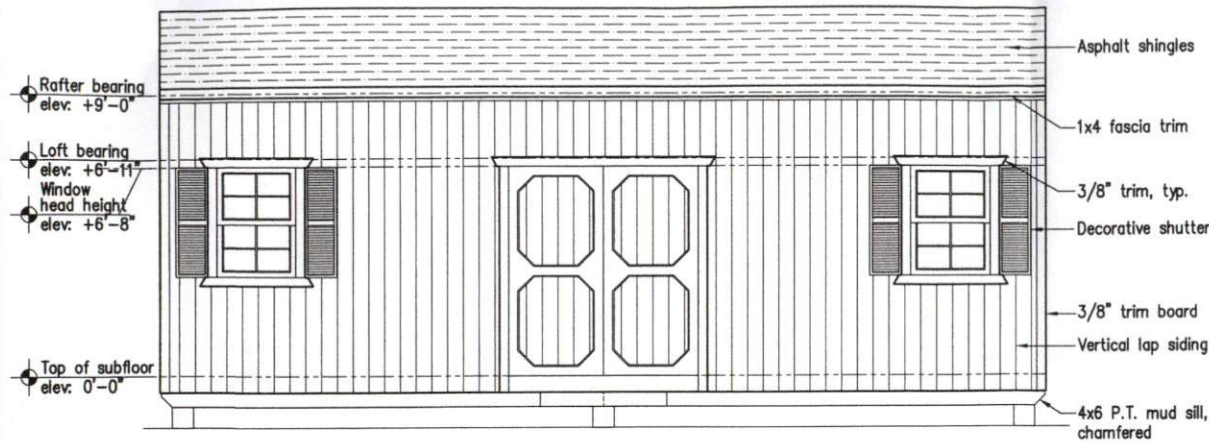
6512 Six Forks Road, Suite 403A  
Raleigh, North Carolina 27615  
(919) 846-4752 (919) 847-8455 Fax  
greg@gar-pe.com



10'x10' to 28'x9' Storage Shed (HW)	SHTS
GARPE Job # 19009	

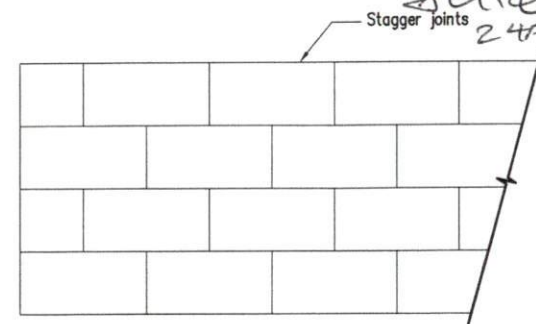
Drawn	GAR
Checked	GAR
Date	28AUG19
Rev	
Rev	

**2**  
2 of 6



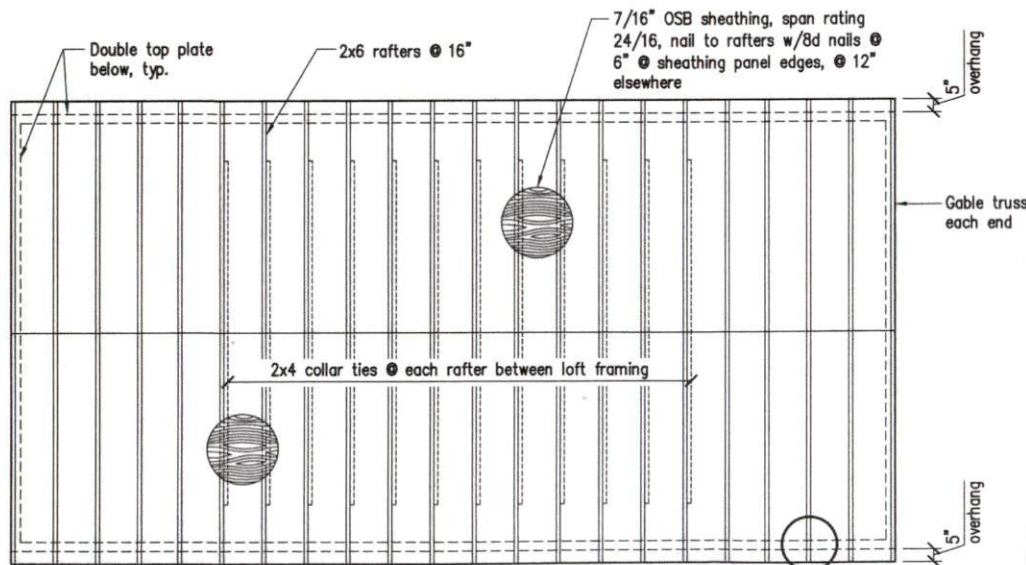
**C**  
2 | 3  
Exterior Elevation

(Ext\_Elev\_1) Scale: 1/4"=1'-0"



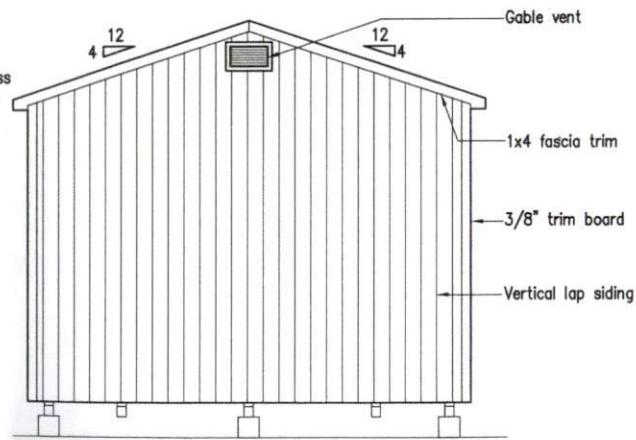
**D**  
2 | 3  
Sheathing Joint Pattern

(Sheathing\_Joint\_Pattern) Scale: N.T.S.



**A**  
3 | D1  
Roof Framing Plan

(Roof\_Framing\_Pln) Scale: 1/4"=1'-0"



**B**  
2 | 3  
Exterior Elevation

(Ext\_Elev\_2) Scale: 1/4"=1'-0"



Stagger joints  
24APR19

**THE Shed Depot**  
OF NORTH CAROLINA

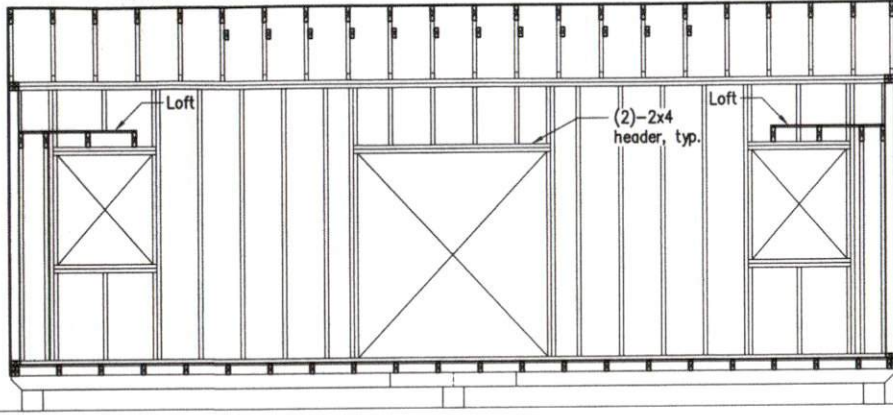
**GREG ROBINSON, P.E.**  
CONSULTING ENGINEER

6512 Six Forks Road, Suite 483A  
Raleigh, North Carolina 27615  
(919) 816-4322 (919) 817-0555 fax  
greg@sr-24.com

10'x10' to 28'x8' Storage Shed (HW)	
Drawn	GAR
Checked	GAR
Date	24APR19
Rev	
Rev	
<b>3</b>	
3 of 6	

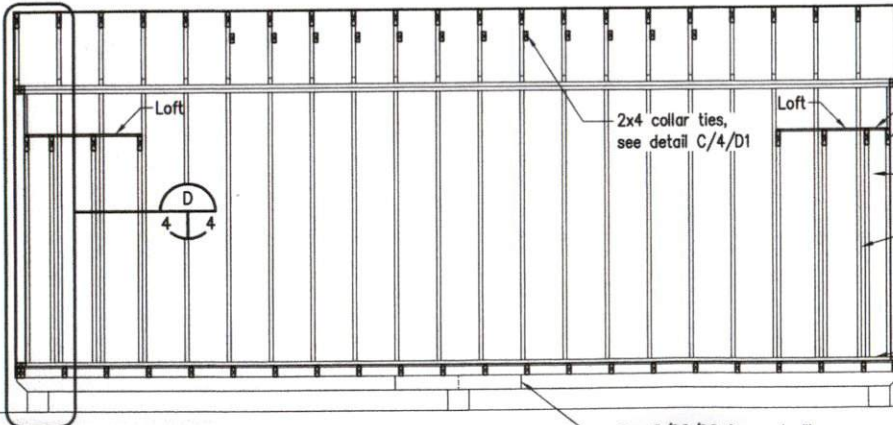


*GA*  
24 APR 19



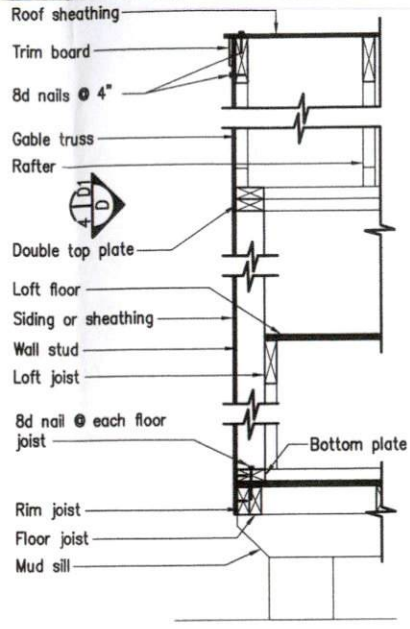
**C Wall Framing Elevation**

(Wall\_Dev\_3) Scale: 1/4"=1'-0"



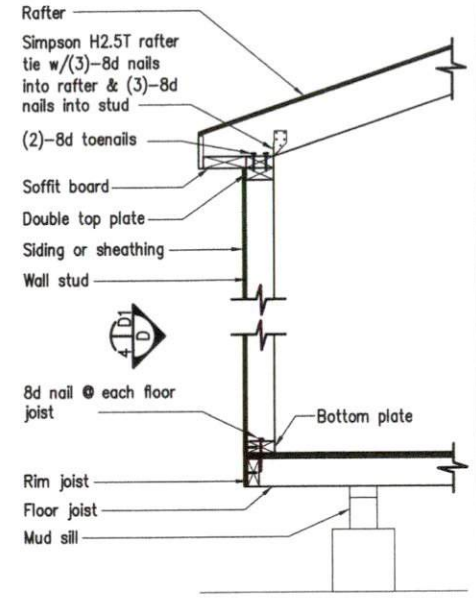
**A Wall Framing Elevation**

(Wall\_Dev\_1) Scale: 1/4"=1'-0"



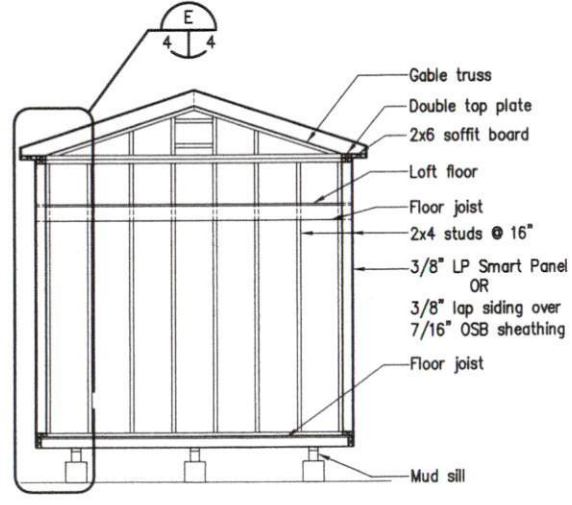
**D Wall Section**

(Wall\_Section\_Rake) Scale: 3/4"=1'-0"



**E Wall Section**

(Wall\_Section) Scale: 3/4"=1'-0"



**B Wall Framing Elevation**

(Wall\_Dev\_2) Scale: 1/4"=1'-0"



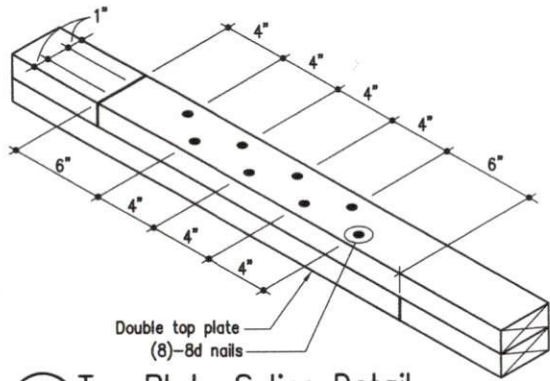
**GREG ROBINSON, P.E.**  
CORPORATE ENGINEER

6512 Six Forks Road, Suite 483A  
Raleigh, North Carolina 27615  
(919) 466-4152 (FAX) (919) 467-6555 FAX  
grob@shed-depot.com

10' x 10' to 28' x 9' Storage Shed

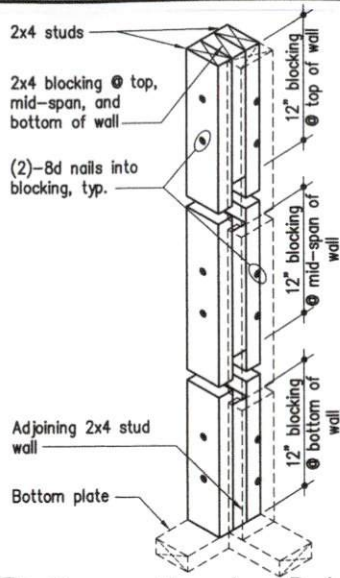
Drawn	GAR
Checked	GAR
Date	24APR19
Rev	
Rev	

GARPE Job # 19009



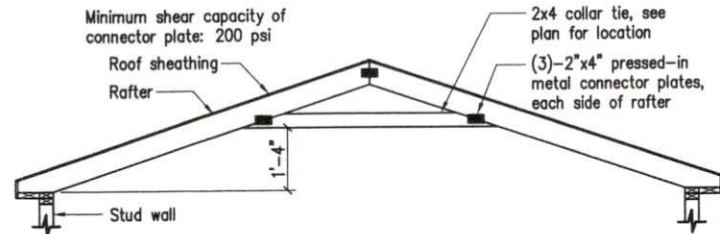
**A** Top Plate Splice Detail

(Top\_Plate\_Splice) Scale: 1 1/2"=1'-0"



**B** Corner Framing Detail

(Corner\_Detail) Scale: 1"=1'-0"



**C** Collar Tie Attachment Detail

(Collar\_Tie) Scale: 3/8"=1'-0"



Typical Corner



Typical Joint

8d nails @ 4" @ panel edges

8d nails @ 12"

Stud beyond  
Lap siding

(6)-8d nails @ both sides of each corner

Floor assembly beyond

8d nails @ 4"

**D** Panel Nailing Patterns

(Nail\_Pattern) Scale: 1/2"=1'-0"

8d nails @ 4" @ panel edges

8d nails @ 12"

Stud beyond  
Lap siding

Floor assembly beyond

8d nails @ 4"

(Nail\_Pattern) Scale: 1/2"=1'-0"



*Gregory A. Robinson*  
24APR19



**GREG ROBINSON, P.E.**  
CORPORATE ENGINEER

6512 Six Forks Road, Suite 403A  
Raleigh, North Carolina 27615  
(919) 846-4352 (919) 847-0455 fax  
greg@gar-pe.com

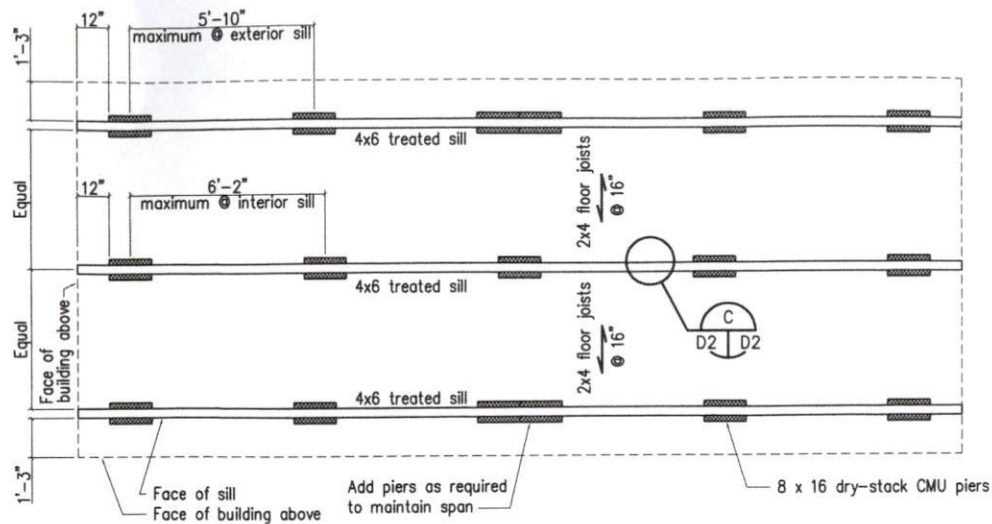
10' x 10' to 28' x 9' Storage Shed

Drawn GAR  
Checked GAR  
Date 24APR19  
Rev  
Rev



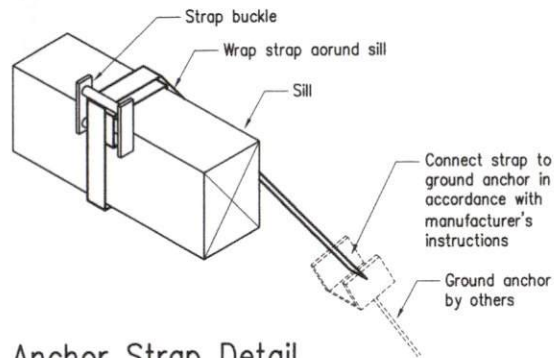
5 of 6

GARPE Job # 19009



Floor Framing and Foundation Pier Plan, 10' x 28' (maximum)

(SILL) Scale: 1/4"=1'-0"

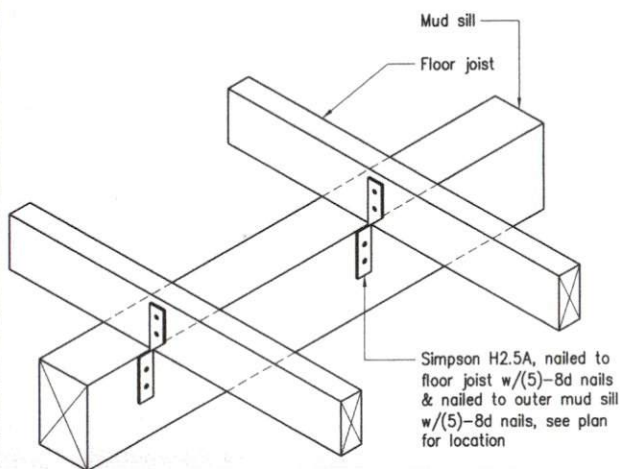


Anchor Strap Detail

(STRAP) Scale: 1 1/2"=1'-0"

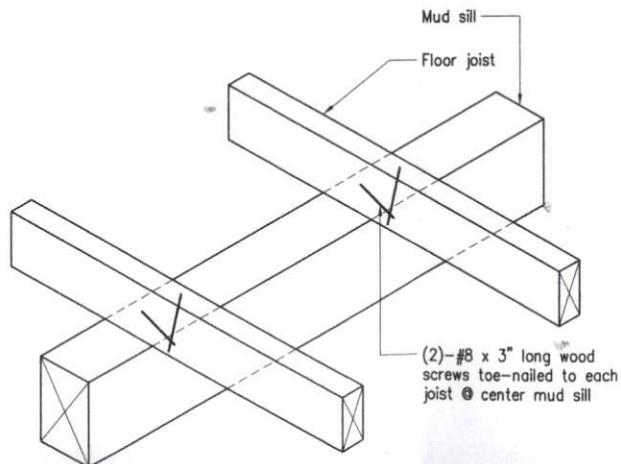
NORTH CAROLINA  
PROFESSIONAL  
SEAL  
13779  
ENGINEER  
GREGORY A. ROBINSON

*Greg Robinson*  
ZBAUG19



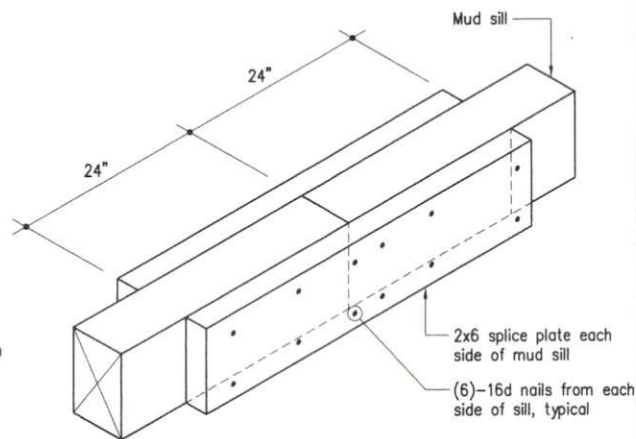
(A) Floor Joist to Outer Mud Sill Connection Detail

(Sill\_Sill\_Conn1) Scale: 1 1/2"=1'-0"



(B) Floor Joist to Inner Mud Sill Connection Detail

(Sill\_Sill\_Conn2) Scale: 1 1/2"=1'-0"



(C) Mud Sill Splice Detail

(Sill\_Splice) Scale: 1 1/2"=1'-0"

The SHED Dept  
Covering Space. Storage Needs.

GREG ROBINSON, P.E.  
CONSULTING ENGINEER

6512 Six Forks Road, Suite 403A  
Raleigh, North Carolina 27615  
(919) 857-6555 Fax  
greg@garpe.com

10'x10' to 28'x9' Storage Shed (HW)

Drawn GAR  
Checked GAR  
Date 28AUG19  
Rev  
Rev

GARPE Job # 19009  
D2  
6 of 6

SHTS



[www.sheddepotnc.com](http://www.sheddepotnc.com)

919-776-0206

2024

# 10' x 20' Standard 'A' Frame

## Standard Features:

- 5' Double Wood Doors
- 5/8" LP ProStruct treated floor
- 8' Side Walls
- 16" On Center Framing
- Diamond plate threshold
- Eave side vented soffit
- 50 Yr. Smart Panel siding
- 30 Yr. Metal Roof
- 15 Yr. Sherwin Williams paint

Model As Shown:12337 CCG/W

<b>Base Price</b>	<b>\$5,450</b>
<b>Trim paint</b>	<b>\$75</b>
<b>2 Windows</b>	<b>\$300</b>

**Total** **\$6,233**  
(with tax)



## **Free Delivery and Set Up**

(4" block included for standard set up  
Within 50 miles, See dealer for details)

## **Monthly Payment**

(with tax) Based on 3 month security deposit

**\$262**

**5  
Year  
Warranty**

*Lease to Own options available  
– ask dealer for details*

**RAMPS AVAILABLE \$250**  
(plus tax) (not included)