

DEED BOOK 0707, Page 1 (ROAD MAINTENANCE AGREEMENT)
 Map Number 2017-346
 Others as shown and/or noted hereon

Phanie K. Pattillo
 Book 3233, Page 450
 Cabinet "F", Slide 332B

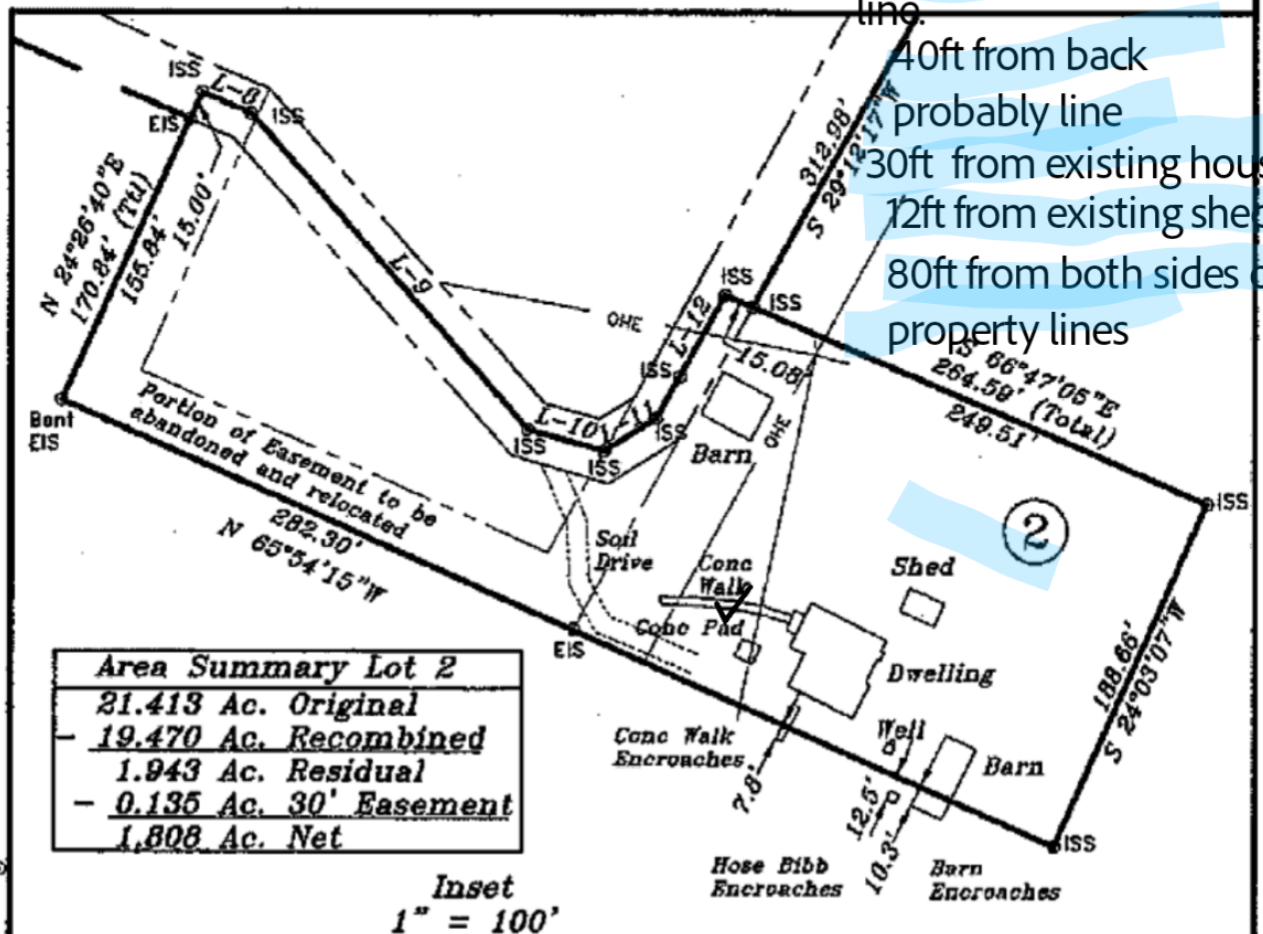
Allen, Jr.
 Book 3233, Page 890
 Slide 693C

son
 son
 re 863
 ge 346

2"E

ation

14x36 prebuilt shed
 180ft from front property
 line
 40ft from back
 probably line
 30ft from existing house
 12ft from existing shed
 80ft from both sides of
 property lines



Area Summary Lot 2	
21.413 Ac.	Original
- 19.470 Ac.	Recombined
1.943 Ac.	Residual
- 0.135 Ac.	30' Easement
1.808 Ac.	Net

Inset
 1" = 100'

for:
Estate
 27525 919-339-3655

STANCIL & ASSOCIATES,
 Professional Land Surveyor, P.A. C-0831
 98 East Depot Street, P. O. Box 730, Angier, N.C. 27501
 Phone: 919-639-2133 Fax: 919-639-2602

HARNETT
 0109 03 & 040692 0109
 00 & 0601-76-4564.000

DATE: 5-11-18
 SURVEYED BY: SDB
 SCALE: 1" = 200'
 DRAWN BY: PAN
 CHECKED & CLOSURE BY:

FIELD BOOK
 DRAWING FILE NO.
 LHNC-1171