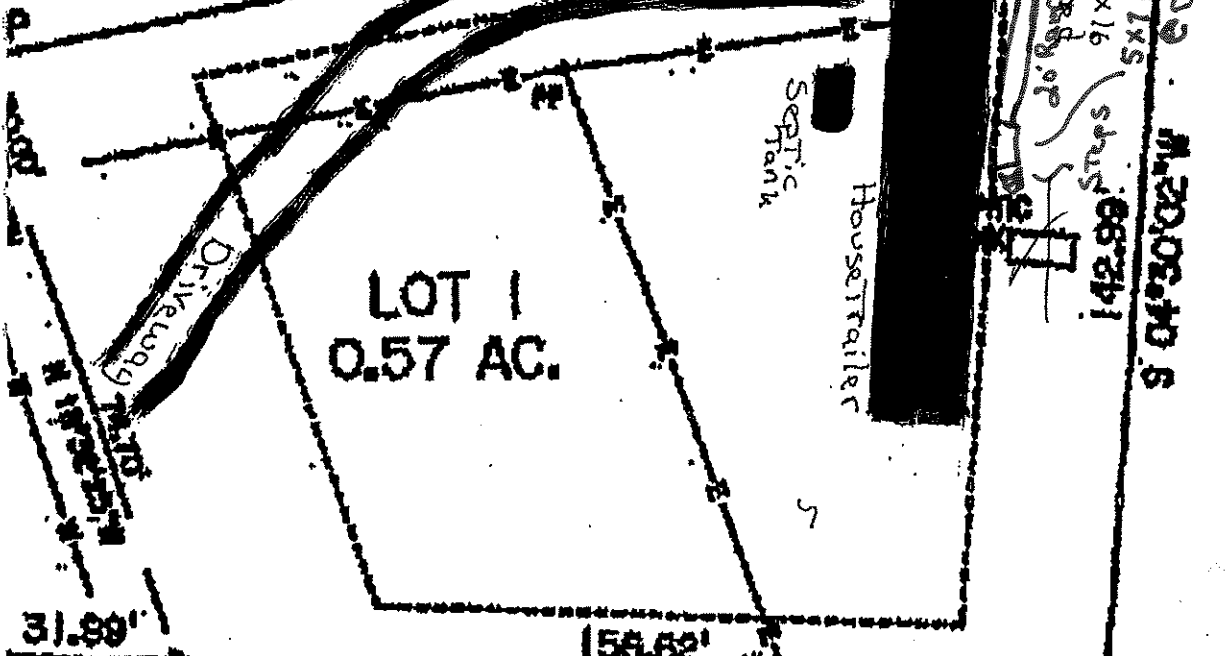


10' to Prop. line
End of Ramp

5x4
Landing

N 79°26'34"E 236.16' TOTAL



LOT 1
0.57 AC.

EIP N 87°53'58"W 188.61' TOTAL
CONTROL CR.

CONT
EIP

TRIMOTHY B. McNEILL
LADONNA C. McNEILL
D.B. 1058, PG. 923

TRACT 2
P.C. F, SL. 299-C

APPROXIMATE
WATER LINE

105' TO FINE TONNANT