



Brittany Radziszewski <[brittany@staywild.com](mailto:brittany@staywild.com)>

---

## Mason Landing Townhomes

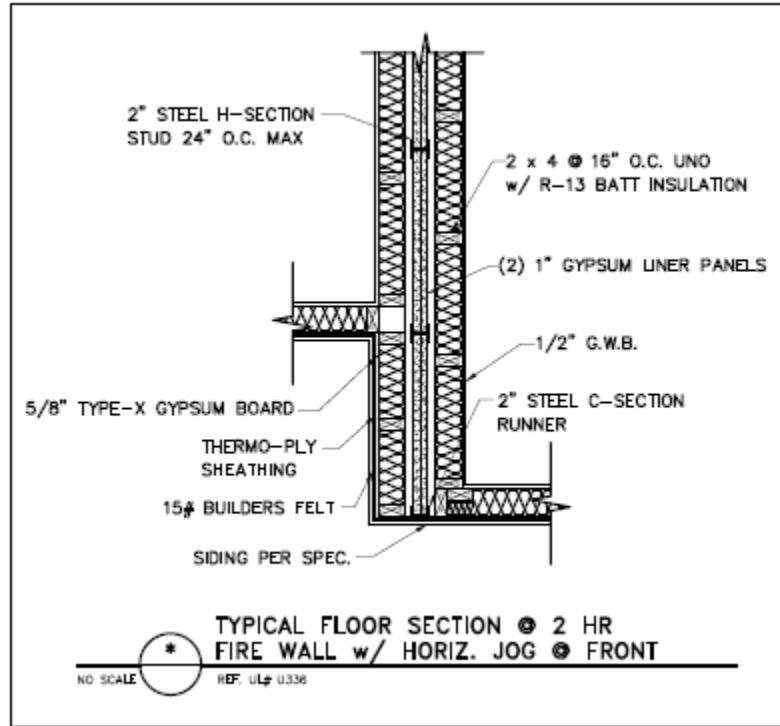
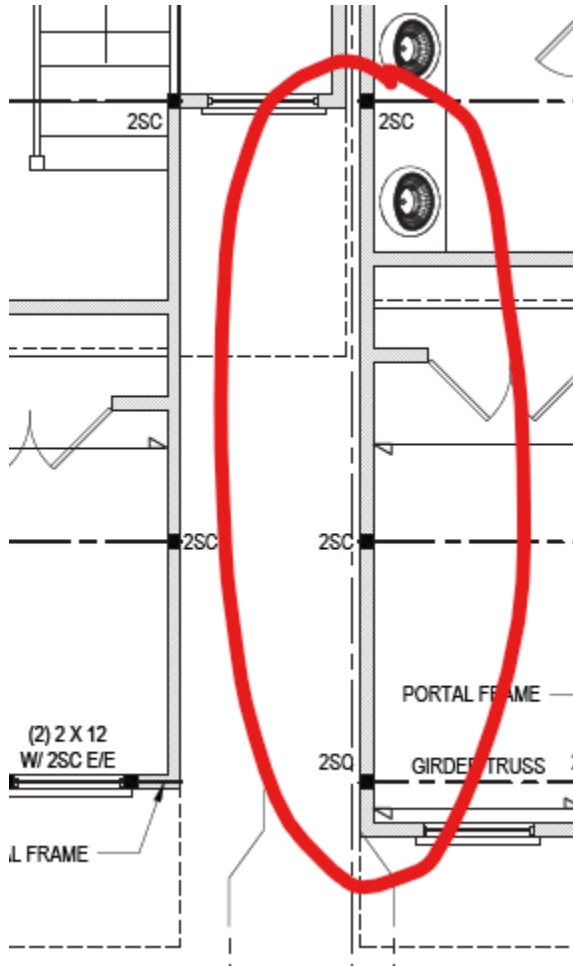
---

**Alex Moore** <[amoore@tyndallengineering.com](mailto:amoore@tyndallengineering.com)>  
To: "brittany@staywild.com" <[brittany@staywild.com](mailto:brittany@staywild.com)>

Thu, Jan 18, 2024 at 3:38 PM

Brittany,

Are they just asking about the area below? The UL U336 jog detail won't apply because that part is exterior wall as they mention and it only needs to be a 1 hour wall. Do they want us to provide a detail for the 1 hour exterior fire wall?



Thanks for the help,



**Alex Moore, PE**

Structural Engineer  
 Tyndall Engineering & Design, P.A.  
 250 Shipwash Dr, Suite 104  
 Garner, NC 27529  
 Office: 919-773-1200 Ext. 234