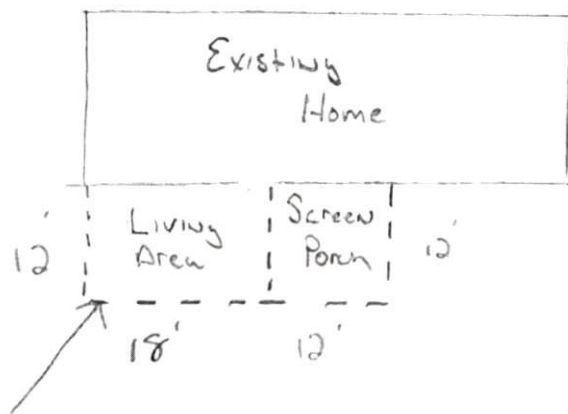
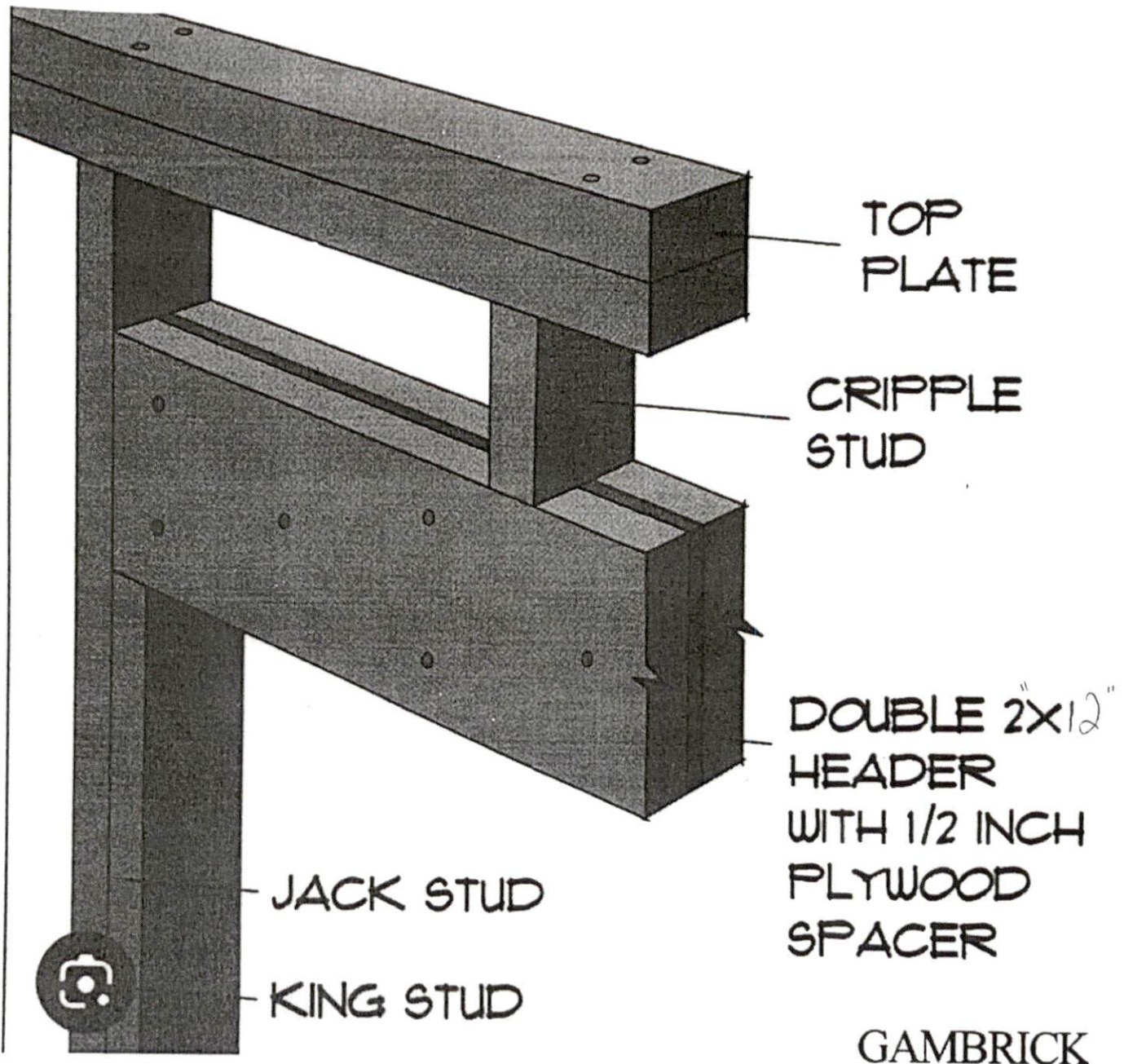


**CRAWLSPACE FOUNDATION**



\* New Footing & Foundation Wall Craw space

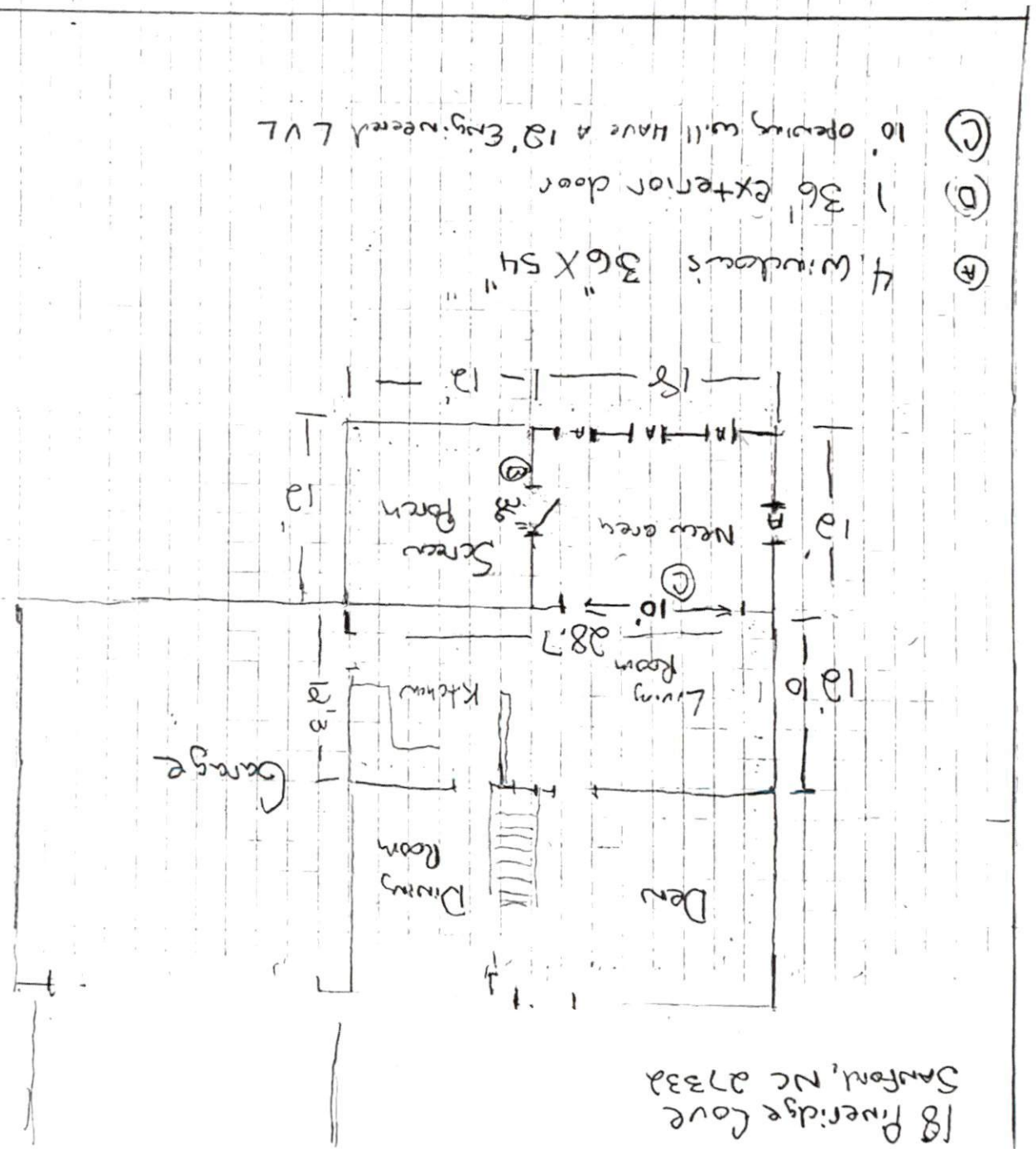
( 10" opening Detail )



\* 2x4 Wood Jack & King Stud's

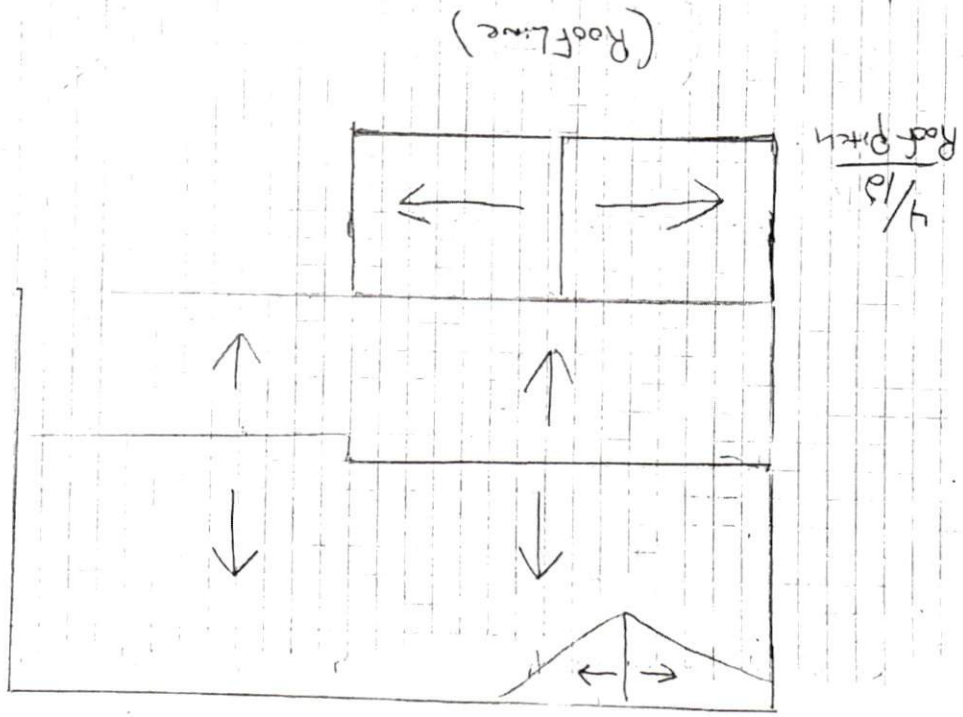
\* 2x12 Double Header

18 Pineridge Cove  
Sanford, NC 27332



- (A) 4 Windows 36" X 54"
- (B) 1 36" Exterior door
- (C) 10' opening will have a 18' Eng. needed LVL

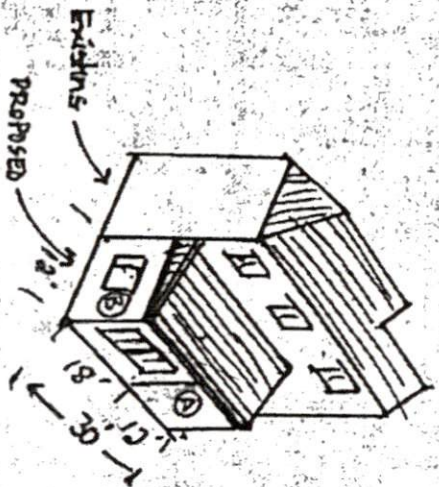
18 Pinetridge Cove Sanford, NC 27332



Note:

- \* Roof will be Architectural Shingles with a 4/12 pitch
- \* The Insulation will be R-38 Insulation (Ceiling-only)
- \* The exterior walls will be Insulated with R-15
- \* Crew space will have R-19





- Ⓐ Screen porch 12' x 12'
- Ⓑ Enclosed Living Area 18' x 12'