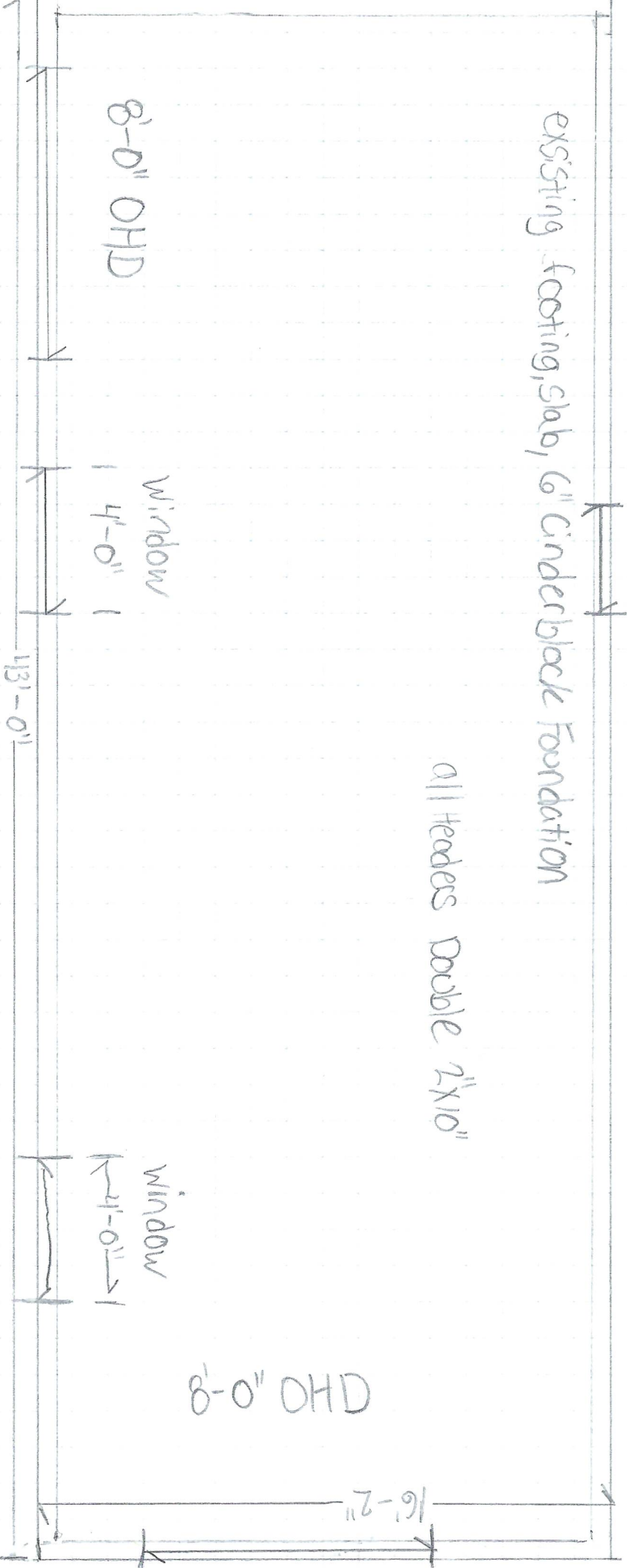




Based on field inspection of existing footings/foundation, engineer review/letter may be required.



existing footing, slab, 6" cinder block Foundation

3'-0" Door

8'-0" OHD

Window
4'-0" |

13'-0"

all headers Double 2x10"

Window
4'-0" |

8'-0" OHD

16'-2"

2"x4" collar ties 32" O.C.

2"x10" Ridge

2"x6" Bottom plate
pressure treated

2"x6"x10' walls w/ Double Top plate

2"x6" Rafters 16" O.C.

2"x10" ceiling joist 16" O.C.

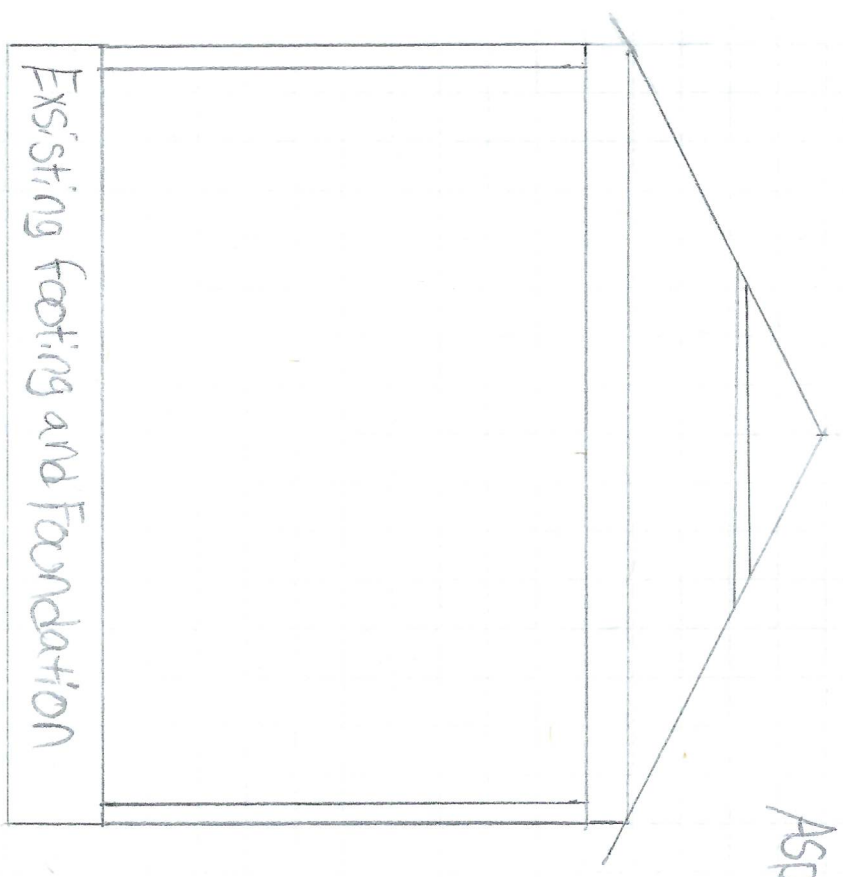
7/16" OSB Tar Paper

Asphalt + Shingles

Tyvek

Vinyl siding on exterior

5 bolts 6'-0" O.C.



Existing footing and Foundation