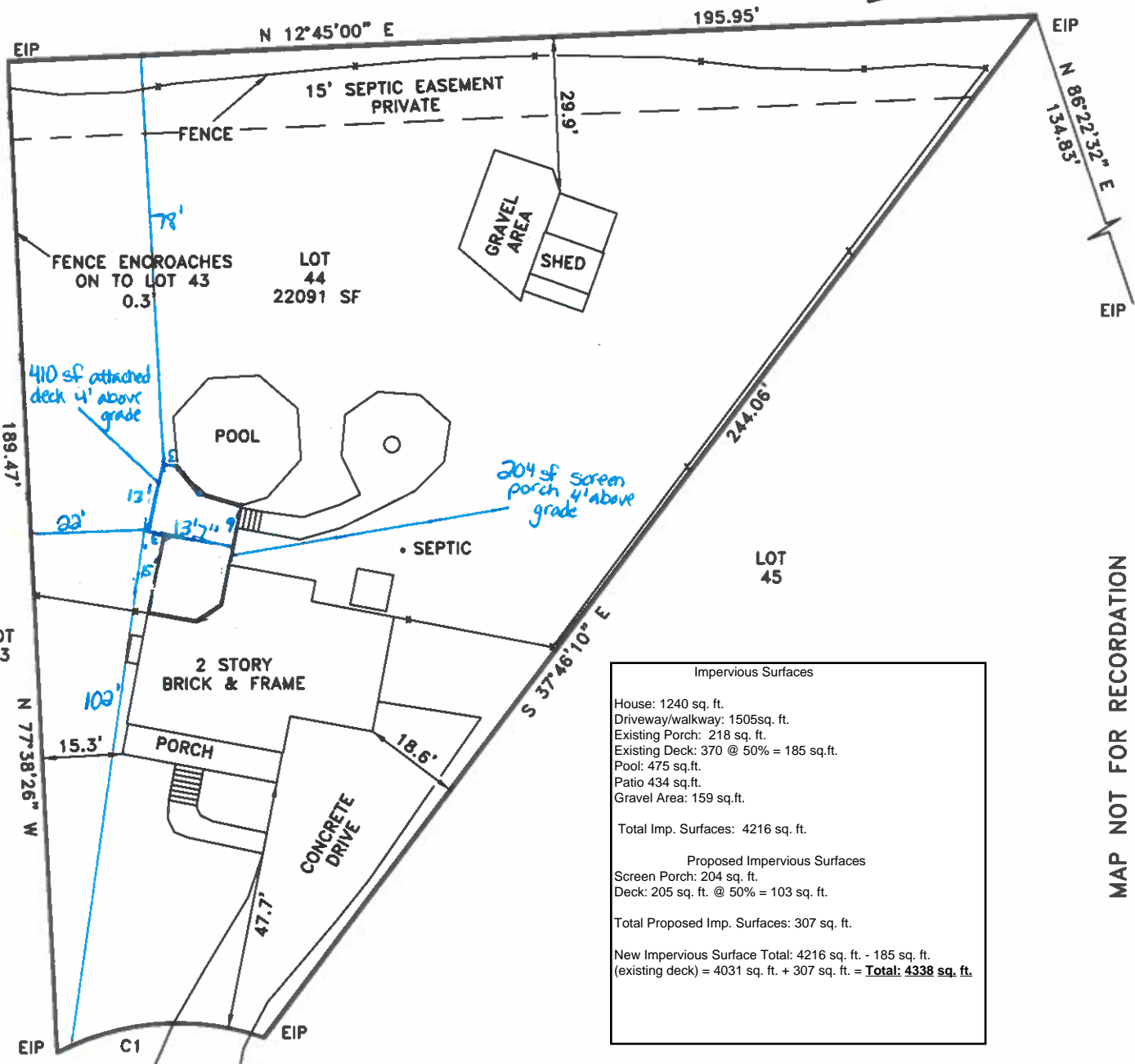
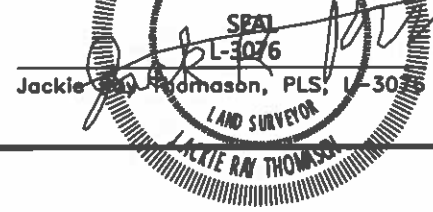


I, Jackie Ray Thomason, PLS, certify
 That the survey is of an existing parcel or parcels of land;
 and that this plat was drawn under my supervision from an actual
 survey made under my supervision deed description recorded in
 Book MAP 2006; that the boundaries not surveyed are
 clearly indicated by information found in
 Book _____ Page _____; that the ratio of precision as calculated
 is 1: 10,000 + _____ with my original signature, registration
 number and seal this 27 day of APRIL, A.D., 20 18.



Impervious Surfaces	
House:	1240 sq. ft.
Driveway/walkway:	1505sq. ft.
Existing Porch:	218 sq. ft.
Existing Deck:	370 @ 50% = 185 sq.ft.
Pool:	475 sq.ft.
Patio:	434 sq.ft.
Gravel Area:	159 sq.ft.
Total Imp. Surfaces:	4216 sq. ft.
Proposed Impervious Surfaces	
Screen Porch:	204 sq. ft.
Deck:	205 sq. ft. @ 50% = 103 sq. ft.
Total Proposed Imp. Surfaces:	307 sq. ft.
New Impervious Surface Total:	4216 sq. ft. - 185 sq. ft. (existing deck) = 4031 sq. ft. + 307 sq. ft. = Total: 4338 sq. ft.

MAP NOT FOR RECORDATION

COKESBURY PARK LANE
 (50' PUBLIC R/W)

CURVES				
Id	Radius	Arc Length	Chord	Ch Bear
C1	50.00'	40.61'	39.50'	S 11°11'28" W