

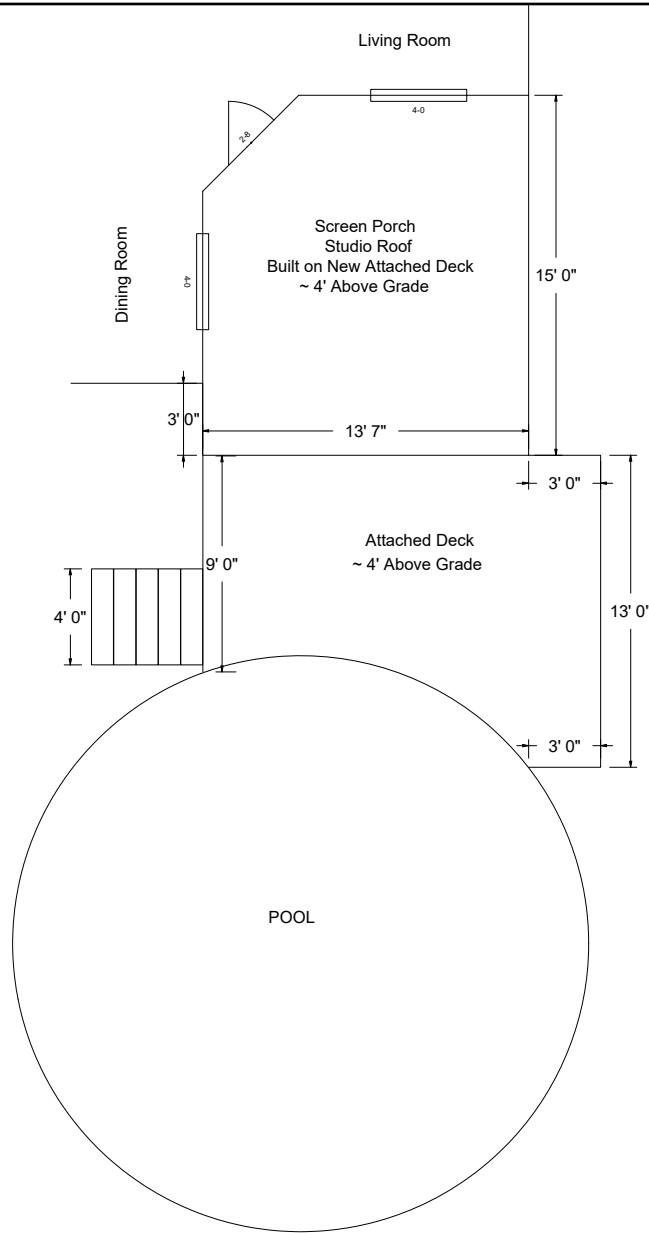
Plan-view

Proposed Deck for GERALYN SCHULZ
487 Cokesbury Park Lane Fuquay-Varina, NC 27526

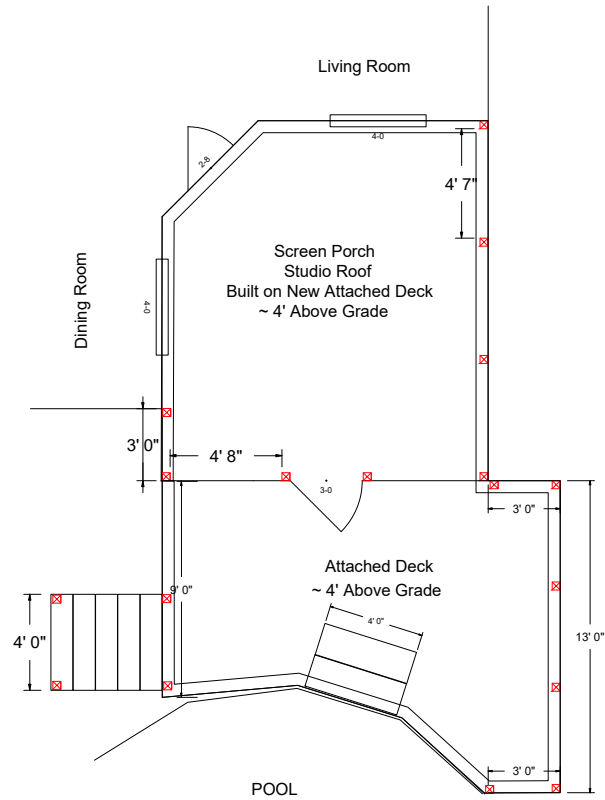
By: Sierra Structures Inc.
September 27th, 2023

Contact: Corey Woods
919-756-7549

Scale: 1/8" = 1'



See notes on
roof page



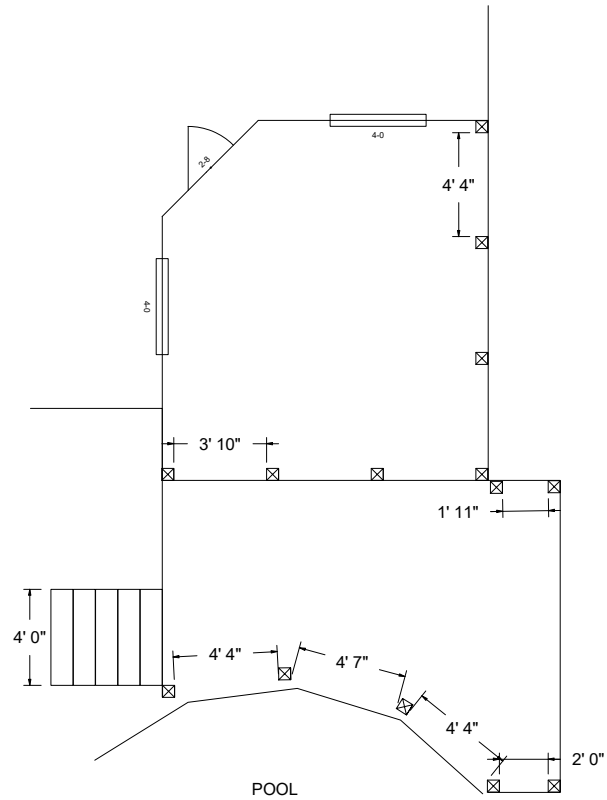
Porch Post Location

Proposed Deck for GERALYN SCHULZ
 487 Cokesbury Park Lane Fuquay-Varina, NC 27526

By: Sierra Structures Inc.
 September 27th, 2023

Contact: Corey Woods
 919-756-7549

Scale: 1/8" = 1'



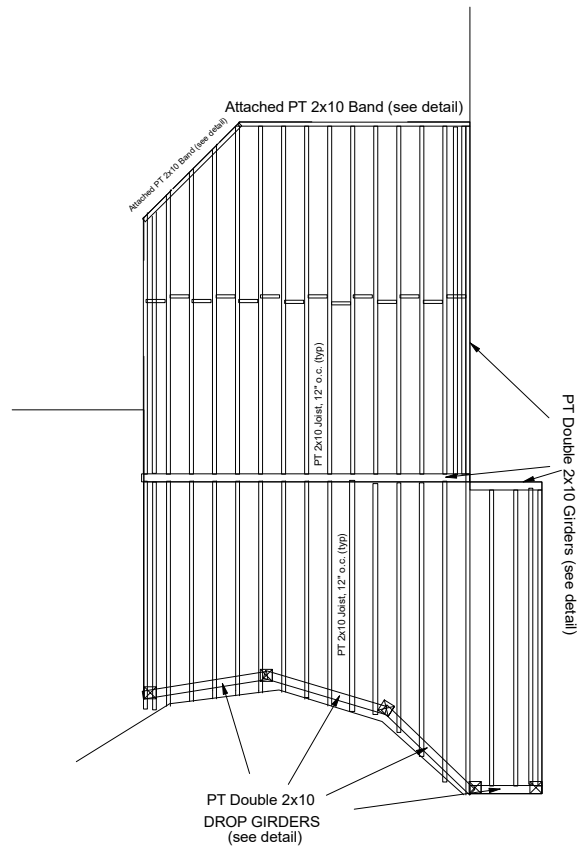
Post Location

Proposed Deck for Geralyn Schulz
 487 Cokesbury Park Lane Fuquay-Varina, NC 27526

By: Sierra Structures Inc.
 September 27th, 2023

Contact: Corey Woods
 919-756-7549

Scale: 1/8" = 1'



Band, Joist and Girder Layout

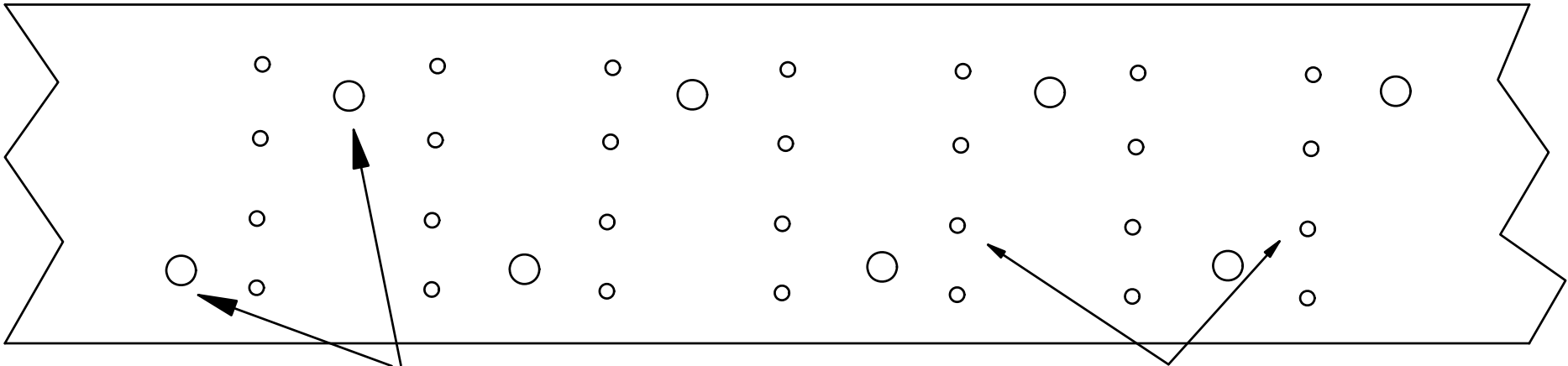
Proposed Deck for GERALYN SCHULZ
 487 Cokesbury Park Lane Fuquay-Varina, NC 27526

By: Sierra Structures Inc.
 September 27th, 2023

Contact: Corey Woods
 919-756-7549

Scale: 1/8" = 1'

Attached PT Band



**5/16" Rugged Structural Screw
6" o.c., staggered**

16d Galv. Nails - 4 @ 8" o.c.

Note: Siding Removed And PVC Flashing Installed

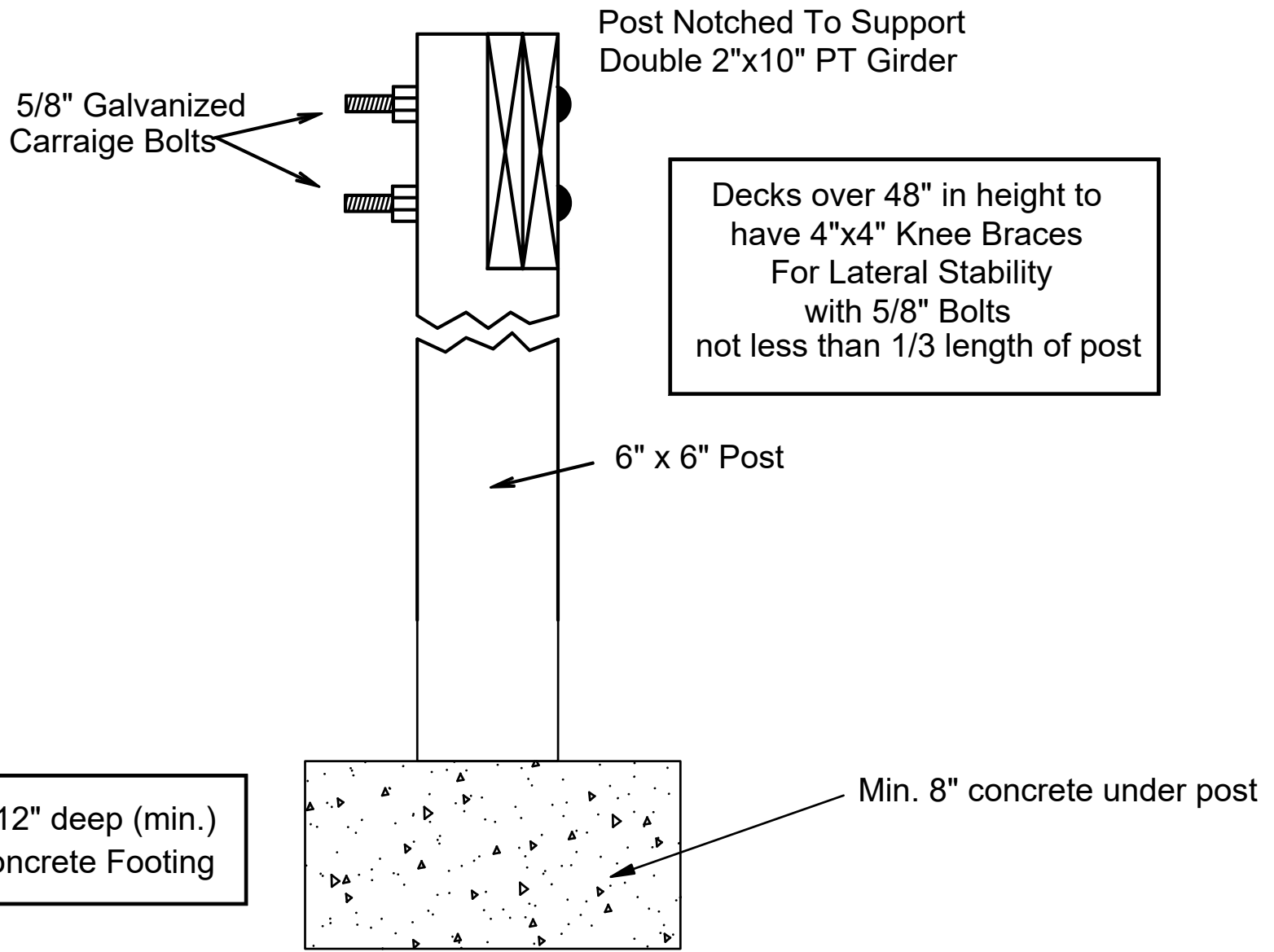
Attached Band Detail

Proposed Deck for Geralyn Schulz
487 Cokesbury Park Lane Fuquay-Varina, NC 27526

By: Sierra Structures Inc.
September 27th, 2023

Contact: Corey Woods
919-756-7549

Scale: NTS



Footing, Post and Girder Detail

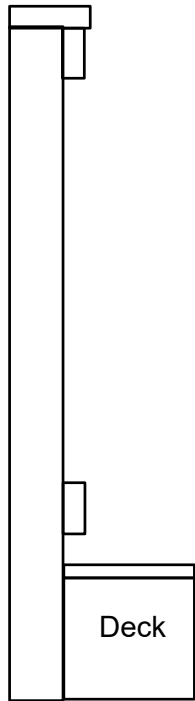
Proposed Deck for GERALYN SCHULZ
 487 Cokesbury Park Lane Fuquay-Varina, NC 27526

By: Sierra Structures Inc.
 September 27th, 2023

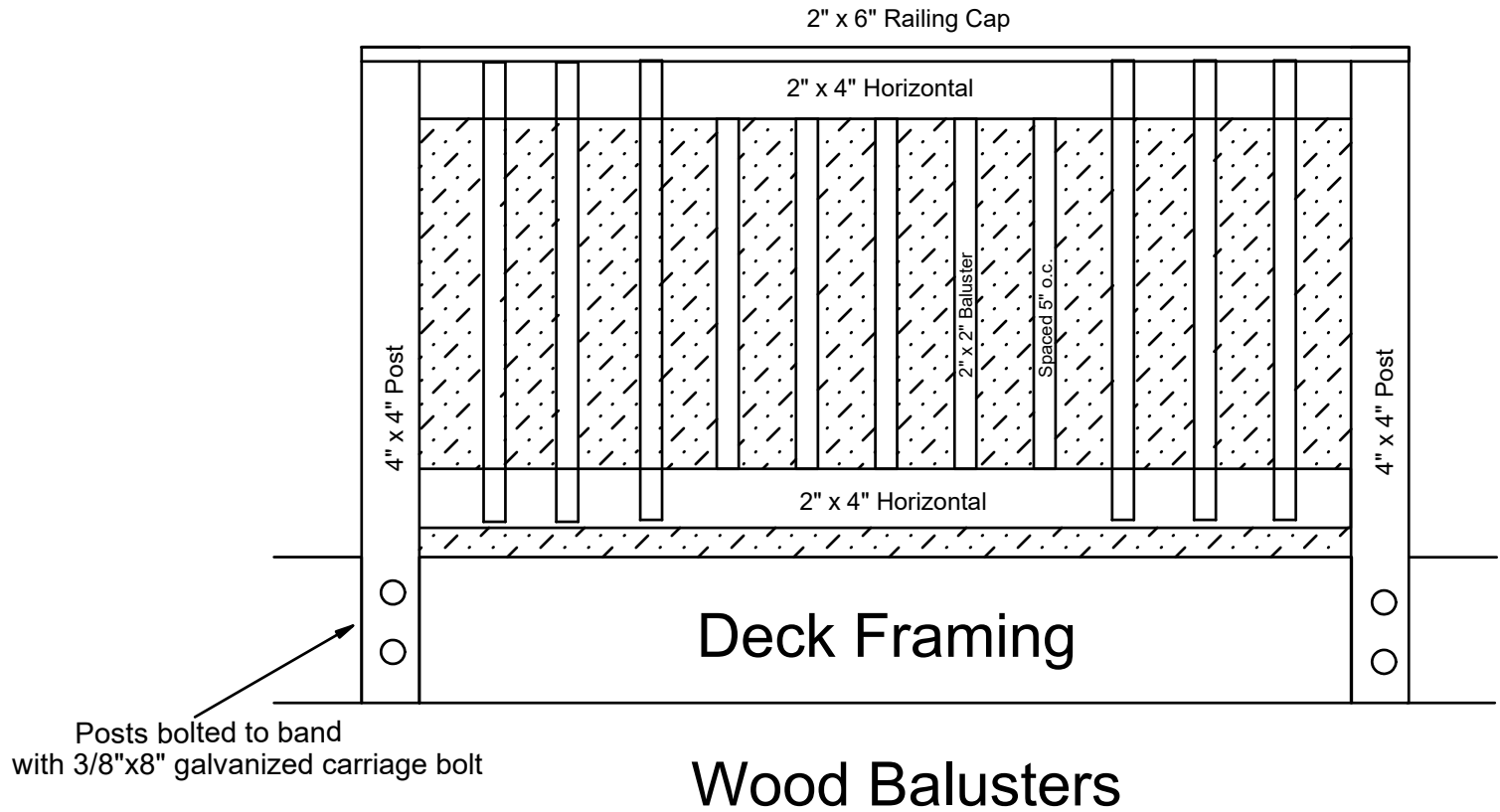
Contact: Corey Woods
 919-756-7549

Scale: NTS

Side View



Min. Railing Height - 36"
Max. Span Between Posts - 6' - 0"



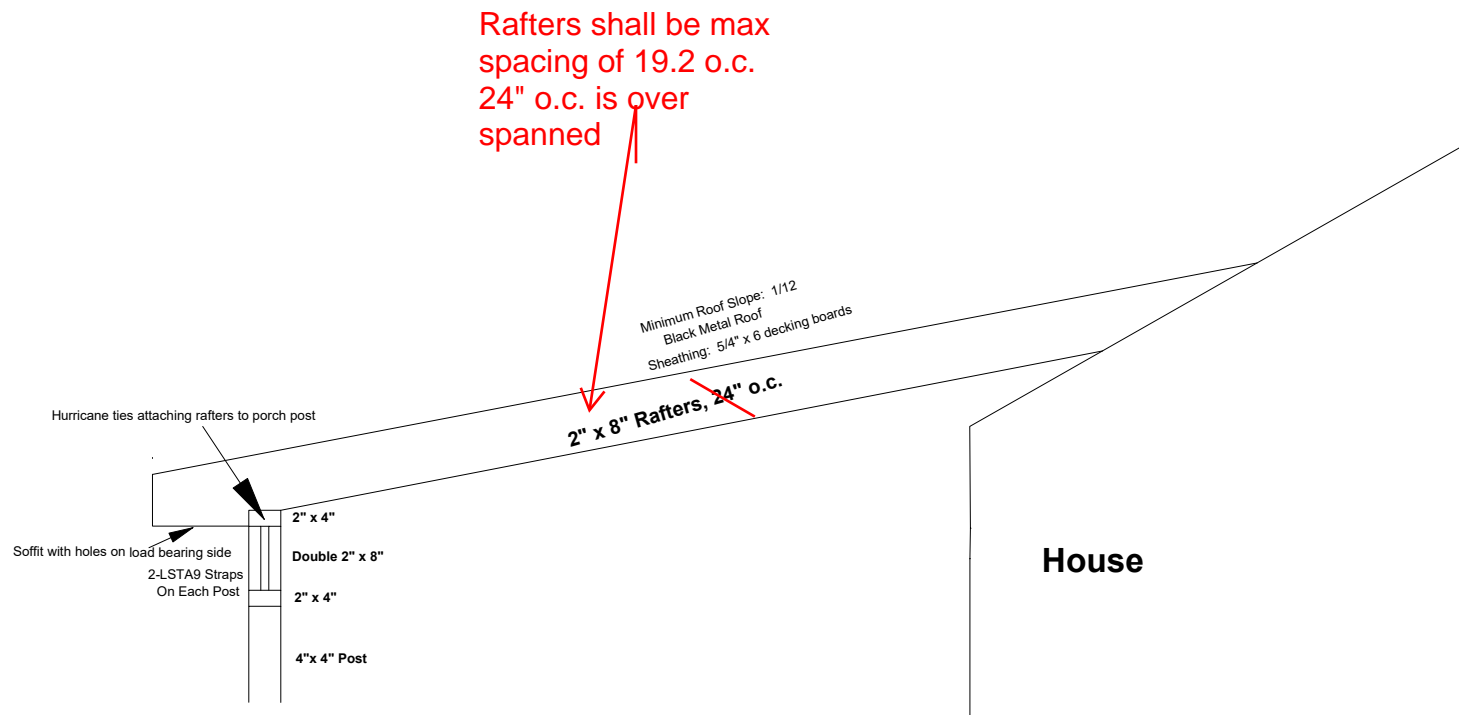
Railing Detail

Proposed Deck for GERALYN SCHULZ
487 Cokesbury Park Lane Fuquay-Varina, NC 27526

By: Sierra Structures Inc.
September 27th, 2023

Contact: Corey Woods
919-756-7549

Scale: NTS



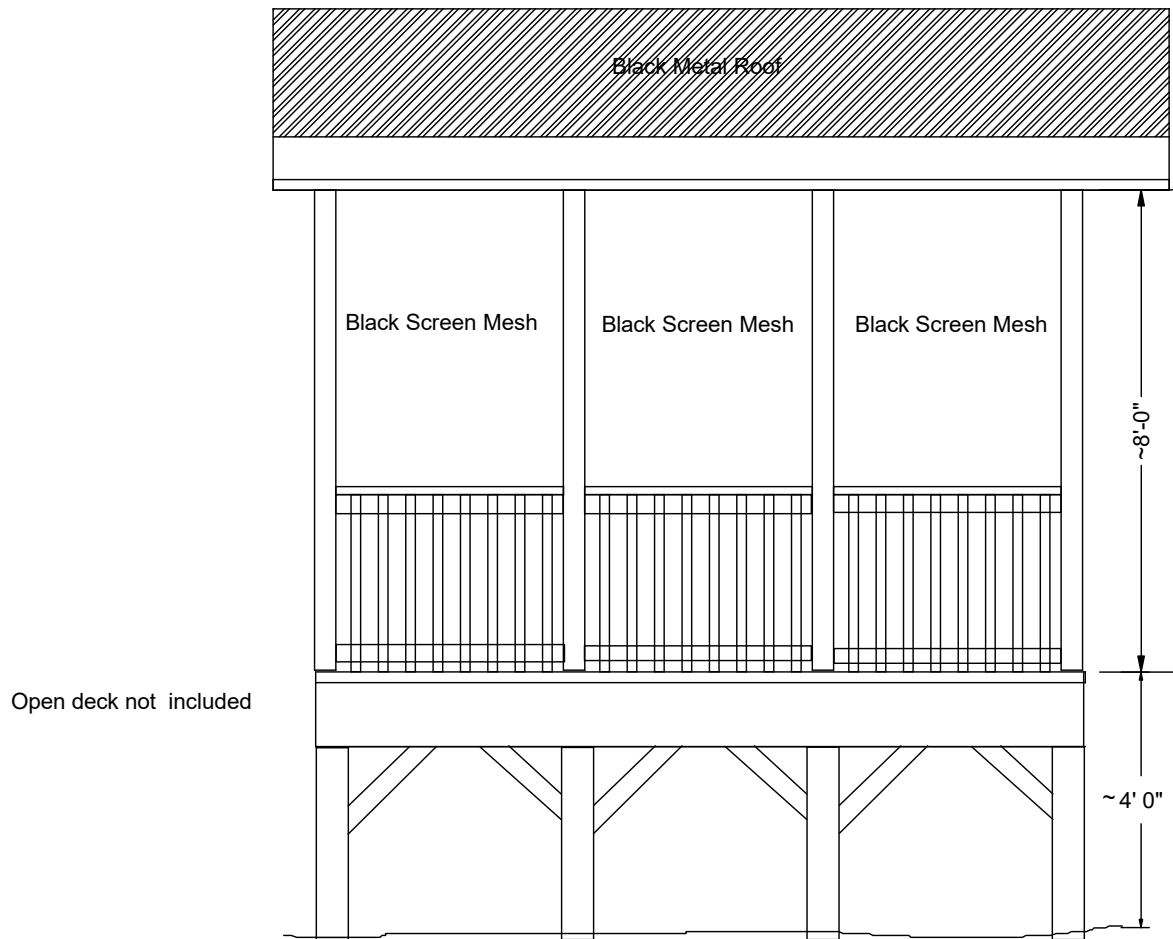
Rafter Detail

Proposed Deck for GERALYN SCHULZ
487 Cokesbury Park Lane Fuquay-Varina, NC 27526

By: Sierra Structures Inc.
September 27th, 2023

Contact: Corey Woods
919-756-7549

Scale: NTS



Rear Elevation Detail

Proposed Deck for GERALYN SCHULZ
487 Cokesbury Park Lane Fuquay-Varina, NC 27526

By: Sierra Structures Inc.
September 27th, 2023

Contact: Corey Woods
919-756-7549

Scale: NTS



Trex Transcend®
RAILING

Traditional style made simple
WITH RAIL KITS

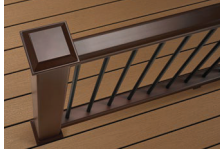
A Transcend kit includes composite top and bottom rails and your choice of square composite or round aluminum balusters. That means:

- 
 Fewer steps in your selection and ordering processes
- 
 Railing componentry all in one box*
- 
 Pre-designed in our most popular looks

KIT 1:
RAIL & SQUARE
COMPOSITE BALUSTER



KIT 2:
RAIL & ROUND
ALUMINUM BALUSTER



KIT 3:
COCKTAIL RAIL & ROUND
ALUMINUM BALUSTER



A cocktail rail kit allows for a Transcend or Select deck board** to be installed on top of a Universal top/bottom rail, creating the perfect flat surface for beverages, planters and more. Cocktail rail kits only available with rails in WT with round aluminum balusters in BK.

*Post sleeve, cap and skirt sold separately.
**All deck boards sold separately.