

Trenco
818 Soundside Rd
Edenton, NC 27932

Re: 25050102-01
126 Mason Hill-Daniel Robles-Roof-Garage

The truss drawing(s) referenced below have been prepared by Truss Engineering Co. under my direct supervision based on the parameters provided by Carter Components (Sanford, NC)).

Pages or sheets covered by this seal: I73446604 thru I73446605

My license renewal date for the state of North Carolina is December 31, 2025.

North Carolina COA: C-0844



May 14, 2025

Gilbert, Eric

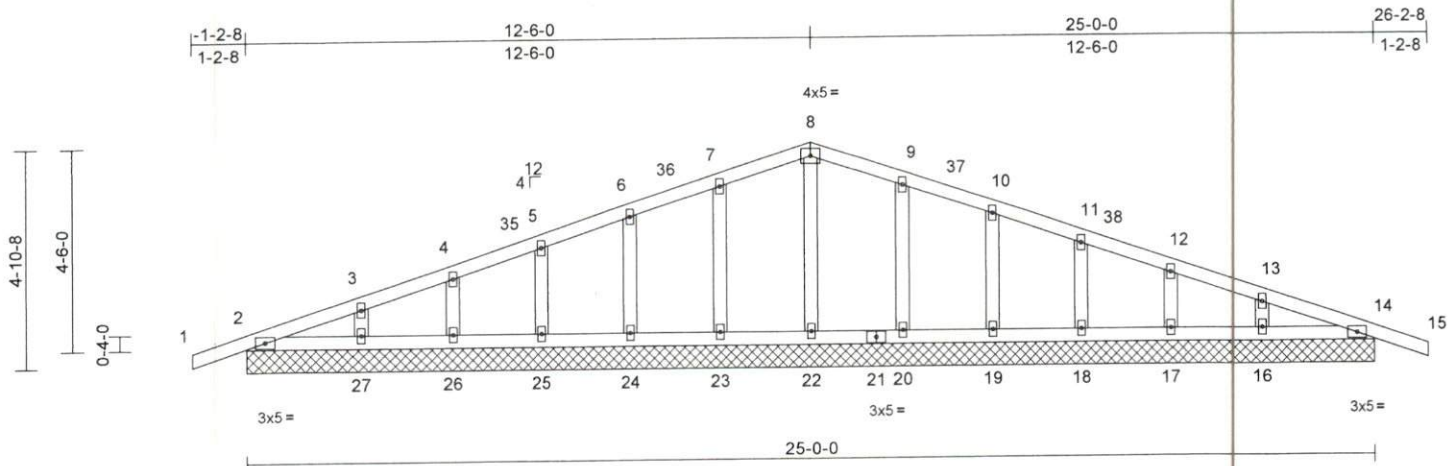
IMPORTANT NOTE: The seal on these truss component designs is a certification that the engineer named is licensed in the jurisdiction(s) identified and that the designs comply with ANSI/TPI 1. These designs are based upon parameters shown (e.g., loads, supports, dimensions, shapes and design codes), which were given to MiTek or TRENCO. Any project specific information included is for MiTek's or TRENCO's customers file reference purpose only, and was not taken into account in the preparation of these designs. MiTek or TRENCO has not independently verified the applicability of the design parameters or the designs for any particular building. Before use, the building designer should verify applicability of design parameters and properly incorporate these designs into the overall building design per ANSI/TPI 1, Chapter 2.

Job	Truss	Truss Type	Qty	Ply	126 Mason Hill-Daniel Robles-Roof-Garage	173446604
25050102-01	A1	Common Supported Gable	2	1	Job Reference (optional)	

Carter Components (Sanford, NC), Sanford, NC - 27332.

Run: 8.73 S Feb 19 2025 Print: 8.730 S Feb 19 2025 MiTek Industries, Inc. Tue May 13 10:18:18
ID: k2Lndtq30TdUhyqeTPMBxzGxyK-RfC?PsB70Hq3NSgPqnl8w3uITxbGKwRCDol7J4zJC7f

Page: 1



Scale = 1:49.2

Loading	(psf)	Spacing	2-0-0	CSI	DEFL	in	(loc)	l/defl	L/d	PLATES	GRIP
TCLL (roof)	20.0	Plate Grip DOL	1.15	TC	0.10	Vert(LL)	n/a	-	n/a	999	244/190
Snow (Pf)	20.0	Lumber DOL	1.15	BC	0.04	Vert(CT)	n/a	-	n/a	999	
TCDL	10.0	Rep Stress Incr	YES	WB	0.06	Horz(CT)	0.00	32	n/a	n/a	
BCLL	0.0*	Code	IRC2021/TPI2014	Matrix-MSH							
BCDL	10.0										
Weight: 115 lb FT = 20%											

LUMBER

TOP CHORD 2x4 SP No.2
BOT CHORD 2x4 SP No.2
OTHERS 2x4 SP No.3

BRACING

TOP CHORD Structural wood sheathing directly applied or 6-0-0 oc purlins.
BOT CHORD Rigid ceiling directly applied or 10-0-0 oc bracing.

REACTIONS

(size) 2=25-0-0, 14=25-0-0, 16=25-0-0, 17=25-0-0, 18=25-0-0, 19=25-0-0, 20=25-0-0, 22=25-0-0, 23=25-0-0, 24=25-0-0, 25=25-0-0, 26=25-0-0, 27=25-0-0
Max Horiz 2=72 (LC 14)
Max Uplift 2=53 (LC 10), 14=62 (LC 11), 16=34 (LC 15), 17=36 (LC 11), 18=34 (LC 15), 19=34 (LC 11), 20=36 (LC 15), 23=36 (LC 14), 24=33 (LC 10), 25=34 (LC 14), 26=36 (LC 10), 27=35 (LC 14)
Max Grav 2=178 (LC 1), 14=178 (LC 1), 16=182 (LC 22), 17=153 (LC 1), 18=206 (LC 22), 19=217 (LC 22), 20=231 (LC 22), 22=145 (LC 22), 23=231 (LC 21), 24=217 (LC 21), 25=206 (LC 21), 26=153 (LC 1), 27=182 (LC 21)

FORCES

(lb) - Maximum Compression/Maximum Tension
TOP CHORD 1-2=0/23, 2-3=-67/46, 3-4=-51/50, 4-5=-36/64, 5-6=-36/78, 6-7=-43/95, 7-8=-52/134, 8-9=-52/134, 9-10=-43/94, 10-11=-36/66, 11-12=-28/39, 12-13=-27/19, 13-14=-33/25, 14-15=0/23
BOT CHORD 2-27=-28/61, 26-27=-14/61, 25-26=-14/61, 24-25=-14/61, 23-24=-14/61, 22-23=-14/61, 20-22=-14/61, 19-20=-14/61, 18-19=-14/61, 17-18=-14/61, 16-17=-14/61, 14-16=-28/61

WEBS

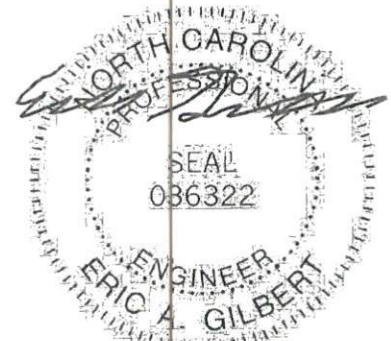
8-22=-105/5, 7-23=-191/105, 6-24=-178/64, 5-25=-165/59, 4-26=-120/62, 3-27=-136/56, 9-20=-191/105, 10-19=-178/64, 11-18=-165/59, 12-17=-120/62, 13-16=-136/56

NOTES

- Unbalanced roof live loads have been considered for this design.
- Wind: ASCE 7-16; Vult=130mph (3-second gust) Vasd=103mph; TCDL=6.0psf; BCDL=6.0psf; h=25ft; Cat. II; Exp B; Enclosed; MWFRS (envelope) exterior zone and C-C Corner(3E) -1-2-8 to 1-9-8, Exterior(2N) 1-9-8 to 9-6-0, Corner(3R) 9-6-0 to 15-6-0, Exterior(2N) 15-6-0 to 23-2-8, Corner(3E) 23-2-8 to 26-2-8 zone; cantilever left and right exposed; end vertical left and right exposed; C-C for members and forces & MWFRS for reactions shown; Lumber DOL=1.60 plate grip DOL=1.60
- Truss designed for wind loads in the plane of the truss only. For studs exposed to wind (normal to the face), see Standard Industry Gable End Details as applicable, or consult qualified building designer as per ANSI/TPI 1.
- TCLL: ASCE 7-16; Pr=20.0 psf (roof LL: Lum DOL=1.15 Plate DOL=1.15); Pf=20.0 psf (Lum DOL=1.15 Plate DOL=1.15); Is=1.0; Rough Cat B; Fully Exp.; Ce=0.9; Cs=1.00; Ct=1.10
- Unbalanced snow loads have been considered for this design.
- This truss has been designed for greater of min roof live load of 12.0 psf or 1.00 times flat roof load of 20.0 psf on overhangs non-concurrent with other live loads.
- All plates are 2x4 MT20 unless otherwise indicated.
- Gable requires continuous bottom chord bearing.
- Gable studs spaced at 2-0-0 oc.
- This truss has been designed for a 10.0 psf bottom chord live load nonconcurrent with any other live loads.

- * This truss has been designed for a live load of 20.0psf on the bottom chord in all areas where a rectangle 3-06-00 tall by 2-00-00 wide will fit between the bottom chord and any other members.
- Provide mechanical connection (by others) of truss to bearing plate capable of withstanding 53 lb uplift at joint 2, 62 lb uplift at joint 14, 36 lb uplift at joint 23, 33 lb uplift at joint 24, 34 lb uplift at joint 25, 36 lb uplift at joint 26, 35 lb uplift at joint 27, 36 lb uplift at joint 20, 34 lb uplift at joint 19, 34 lb uplift at joint 18, 36 lb uplift at joint 17, 34 lb uplift at joint 16, 53 lb uplift at joint 2 and 62 lb uplift at joint 14.

LOAD CASE(S) Standard



May 14, 2025

WARNING - Verify design parameters and READ NOTES ON THIS AND INCLUDED MITEK REFERENCE PAGE MII-7473 rev. 1/2/2023 BEFORE USE
Design valid for use only with MiTek® connectors. This design is based only upon parameters shown, and is for an individual building component, not a truss system. Before use, the building designer must verify the applicability of design parameters and properly incorporate this design into the overall building design. Bracing indicated is to prevent buckling of individual truss web and/or chord members only. Additional temporary and permanent bracing is always required for stability and to prevent collapse with possible personal injury and property damage. For general guidance regarding the fabrication, storage, delivery, erection and bracing of trusses and truss systems, see ANSI/TPI1 Quality Criteria and DSB-22 available from Truss Plate Institute (www.tpinstitute.org) and BCSI Building Component Safety Information available from the Structural Building Component Association (www.sbcacompcomponents.com)

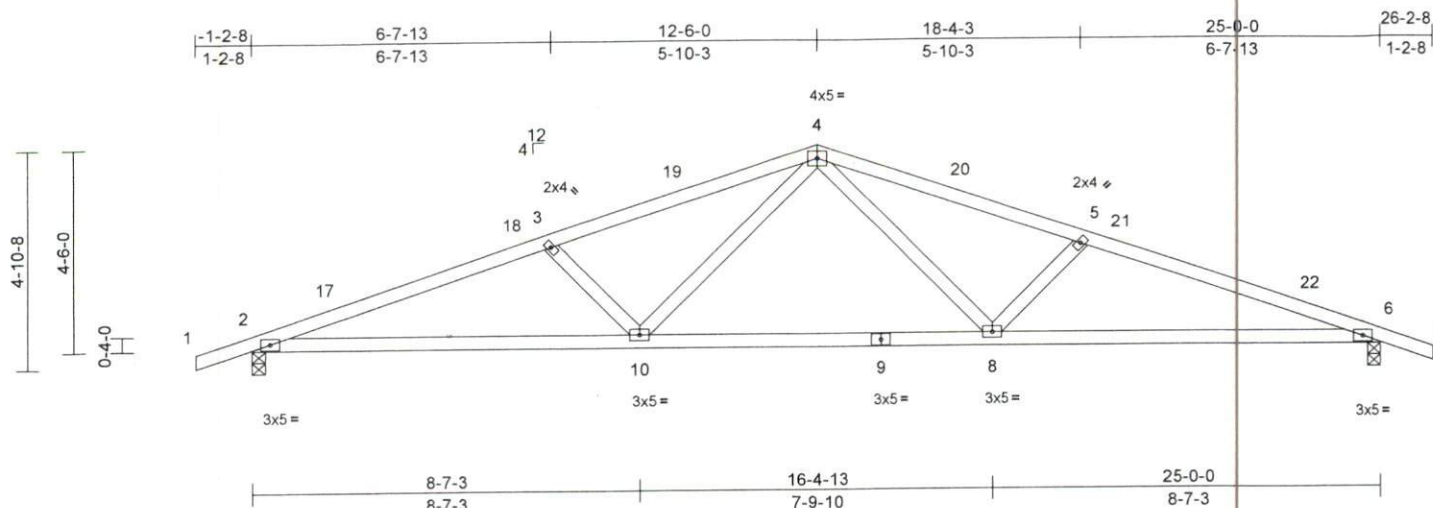
ENGINEERING BY
TRENCO
A MiTek Affiliate
818 Soundside Road
Edenton, NC 27932

Job	Truss	Truss Type	Qty	Ply	126 Mason Hill-Daniel Robles-Roof Garage	173446605
25050102-01	A2	Common	12	1	Job Reference (optional)	

Carter Components (Sanford, NC), Sanford, NC - 27332,

Run: 8.73 S Feb 19 2025 Print: 8.730 S Feb 19 2025 MiTek Industries, Inc. Tue May 13 10:18:19
ID:5T4pXyTtrZzxVDEFRI0ZWpzGxyn-RfC7PsB70Hq3NSgPqnL8w3ulTXbGKwRCDoi7J4zJC7f

Page: 1



Scale = 1:49.1

Loading	(psf)	Spacing	2-0-0	CSI	DEFL	in	(loc)	I/defl	L/d	PLATES	GRIP
TCLL (roof)	20.0	Plate Grip DOL	1.15	TC	0.74	Vert(LL)	-0.13	10-13	>999	240	244/190
Snow (Pf)	20.0	Lumber DOL	1.15	BC	0.86	Vert(CT)	-0.33	10-13	>909	180	
TCDL	10.0	Rep Stress Incr	YES	WB	0.33	Horz(CT)	0.07	6	n/a	n/a	
BCLL	0.0*	Code	IRC2021/TPI2014	Matrix-MSH							
BCDL	10.0										
										Weight: 105 lb	FT = 20%

LUMBER

TOP CHORD 2x4 SP No.2
BOT CHORD 2x4 SP No.2
WEBS 2x4 SP No.3

BRACING

TOP CHORD Structural wood sheathing directly applied or 2-6-7 oc purlins.
BOT CHORD Rigid ceiling directly applied or 10-0-0 oc bracing.

REACTIONS

(size) 2=0-3-8, 6=0-3-8
Max Horiz 2=72 (LC 14)
Max Uplift 2=-164 (LC 10), 6=-164 (LC 11)
Max Grav 2=1105 (LC 21), 6=1105 (LC 22)

FORCES

(lb) - Maximum Compression/Maximum Tension

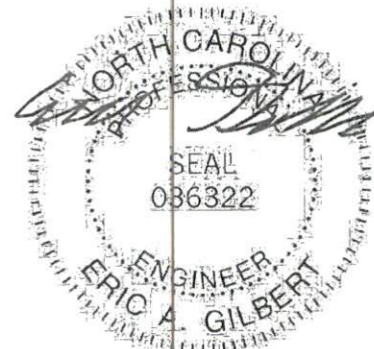
TOP CHORD 1-2=0/23, 2-3=-2519/436, 3-4=-2182/384,
4-5=-2182/384, 5-6=-2519/436, 6-7=0/23
BOT CHORD 2-10=-327/2364, 8-10=-172/1489,
6-8=-327/2364
WEBS 4-8=-67/795, 5-8=-561/193, 4-10=-67/795,
3-10=-561/193

NOTES

- Unbalanced roof live loads have been considered for this design.
- Wind: ASCE 7-16; Vult=130mph (3-second gust)
Vasd=103mph; TCCL=6.0psf; BCDL=6.0psf; h=25ft; Cat. II; Exp B; Enclosed; MWFRS (envelope) exterior zone and C-C Exterior(2E) -1-2-8 to 1-9-8, Interior (1) 1-9-8 to 9-6-0, Exterior(2R) 9-6-0 to 15-6-0, Interior (1) 15-6-0 to 23-2-8, Exterior(2E) 23-2-8 to 26-2-8 zone; cantilever left and right exposed; end vertical left and right exposed; C-C for members and forces & MWFRS for reactions shown; Lumber DOL=1.60 plate grip DOL=1.60
- TCCL: ASCE 7-16; Pr=20.0 psf (roof LL: Lum DOL=1.15 Plate DOL=1.15); Pf=20.0 psf (Lum DOL=1.15 Plate DOL=1.15); Is=1.0; Rough Cat B; Fully Exp.; Ce=0.9; Cs=1.00; Ct=1.10

- Unbalanced snow loads have been considered for this design.
- This truss has been designed for greater of min roof live load of 12.0 psf or 1.00 times flat roof load of 20.0 psf on overhangs non-concurrent with other live loads.
- This truss has been designed for a 10.0 psf bottom chord live load nonconcurrent with any other live loads.
- * This truss has been designed for a live load of 20.0psf on the bottom chord in all areas where a rectangle 3'-06'-00 tall by 2'-00'-00 wide will fit between the bottom chord and any other members.
- One H2.5A Simpson Strong-Tie connectors recommended to connect truss to bearing walls due to UPLIFT at jt(s) 2 and 6. This connection is for uplift only and does not consider lateral forces.

LOAD CASE(S) Standard



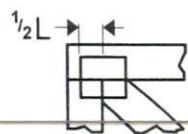
May 14, 2025

WARNING - Verify design parameters and READ NOTES ON THIS AND INCLUDED MITEK REFERENCE PAGE MII-7473 rev. 1/2/2023 BEFORE USE.
Design valid for use only with MiTek® connectors. This design is based only upon parameters shown, and is for an individual building component, not a truss system. Before use, the building designer must verify the applicability of design parameters and properly incorporate this design into the overall building design. Bracing indicated is to prevent buckling of individual truss web and/or chord members only. Additional temporary and permanent bracing is always required for stability and to prevent collapse with possible personal injury and property damage. For general guidance regarding the fabrication, storage, delivery, erection and bracing of trusses and truss systems, see ANSI/TPI1 Quality Criteria and DSB-22 available from Truss Plate Institute (www.tpinstitute.org) and BCSI Building Component Safety Information available from the Structural Building Component Association (www.sbcacompnents.com)

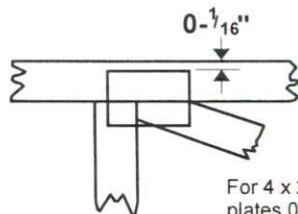
ENGINEERING BY
TRENCO
A MiTek Affiliate
818 Soundside Road
Edenton, NC 27932

Symbols

PLATE LOCATION AND ORIENTATION



Center plate on joint unless x, y offsets are indicated. Dimensions are in ft-in-sixteenths. Apply plates to both sides of truss and fully embed teeth.



For 4 x 2 orientation, locate plates 0- 1/16" from outside edge of truss.



This symbol indicates the required direction of slots in connector plates.

* Plate location details available in MiTek software or upon request.

PLATE SIZE

4 x 4

The first dimension is the plate width measured perpendicular to slots. Second dimension is the length parallel to slots.

LATERAL BRACING LOCATION



Indicated by symbol shown and/or by text in the bracing section of the output. Use T or I bracing if indicated.

BEARING



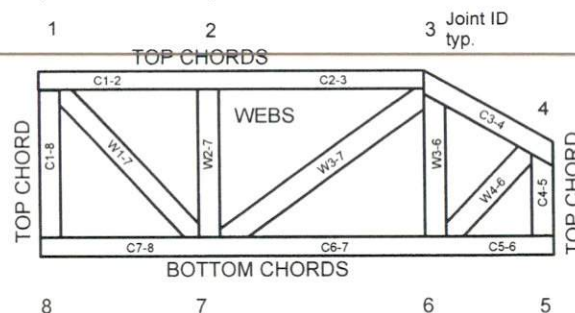
Indicates location where bearings (supports) occur. Icons vary but reaction section indicates joint number/letter where bearings occur. Min size shown is for crushing only.

Industry Standards:

ANSI/TPI1: National Design Specification for Metal Plate Connected Wood Truss Construction.
DSB-22: Design Standard for Bracing.
BCSI: Building Component Safety Information, Guide to Good Practice for Handling, Installing, Restraining & Bracing of Metal Plate Connected Wood Trusses.

Numbering System

6-4-8 dimensions shown in ft-in-sixteenths
(Drawings not to scale)



JOINTS ARE GENERALLY NUMBERED/LETTERED CLOCKWISE AROUND THE TRUSS STARTING AT THE JOINT FARTHEST TO THE LEFT.

CHORDS AND WEBS ARE IDENTIFIED BY END JOINT NUMBERS/LETTERS.

Product Code Approvals

ICC-ES Reports:

ESR-1988, ESR-2362, ESR-2685, ESR-3282
ESR-4722, ESL-1388

Design General Notes

Trusses are designed for wind loads in the plane of the truss unless otherwise shown.

Lumber design values are in accordance with ANSI/TPI 1 section 6.3 These truss designs rely on lumber values established by others.

© 2023 MiTek® All Rights Reserved



MiTek Engineering Reference Sheet: MII-7473 rev. 1/2/2023

General Safety Notes

Failure to Follow Could Cause Property Damage or Personal Injury

1. Additional stability bracing for truss system, e.g. diagonal or X-bracing, is always required. See BCSI.
2. Truss bracing must be designed by an engineer. For wide truss spacing, individual lateral braces themselves may require bracing, or alternative Tor I bracing should be considered.
3. Never exceed the design loading shown and never stack materials on inadequately braced trusses.
4. Provide copies of this truss design to the building designer, erection supervisor, property owner and all other interested parties.
5. Cut members to bear tightly against each other.
6. Place plates on each face of truss at each joint and embed fully. Knots and wane at joint locations are regulated by ANSI/TPI 1.
7. Design assumes trusses will be suitably protected from the environment in accord with ANSI/TPI 1.
8. Unless otherwise noted, moisture content of lumber shall not exceed 19% at time of fabrication.
9. Unless expressly noted, this design is not applicable for use with fire retardant, preservative treated, or green lumber.
10. Camber is a non-structural consideration and is the responsibility of truss fabricator. General practice is to camber for dead load deflection.
11. Plate type, size, orientation and location dimensions indicated are minimum plating requirements.
12. Lumber used shall be of the species and size, and in all respects, equal to or better than that specified.
13. Top chords must be sheathed or purlins provided at spacing indicated on design.
14. Bottom chords require lateral bracing at 10 ft. spacing, or less, if no ceiling is installed, unless otherwise noted.
15. Connections not shown are the responsibility of others.
16. Do not cut or alter truss member or plate without prior approval of an engineer.
17. Install and load vertically unless indicated otherwise.
18. Use of green or treated lumber may pose unacceptable environmental, health or performance risks. Consult with project engineer before use.
19. Review all portions of this design (front, back, words and pictures) before use. Reviewing pictures alone is not sufficient.
20. Design assumes manufacture in accordance with ANSI/TPI 1 Quality Criteria.
21. The design does not take into account any dynamic or other loads other than those expressly stated.