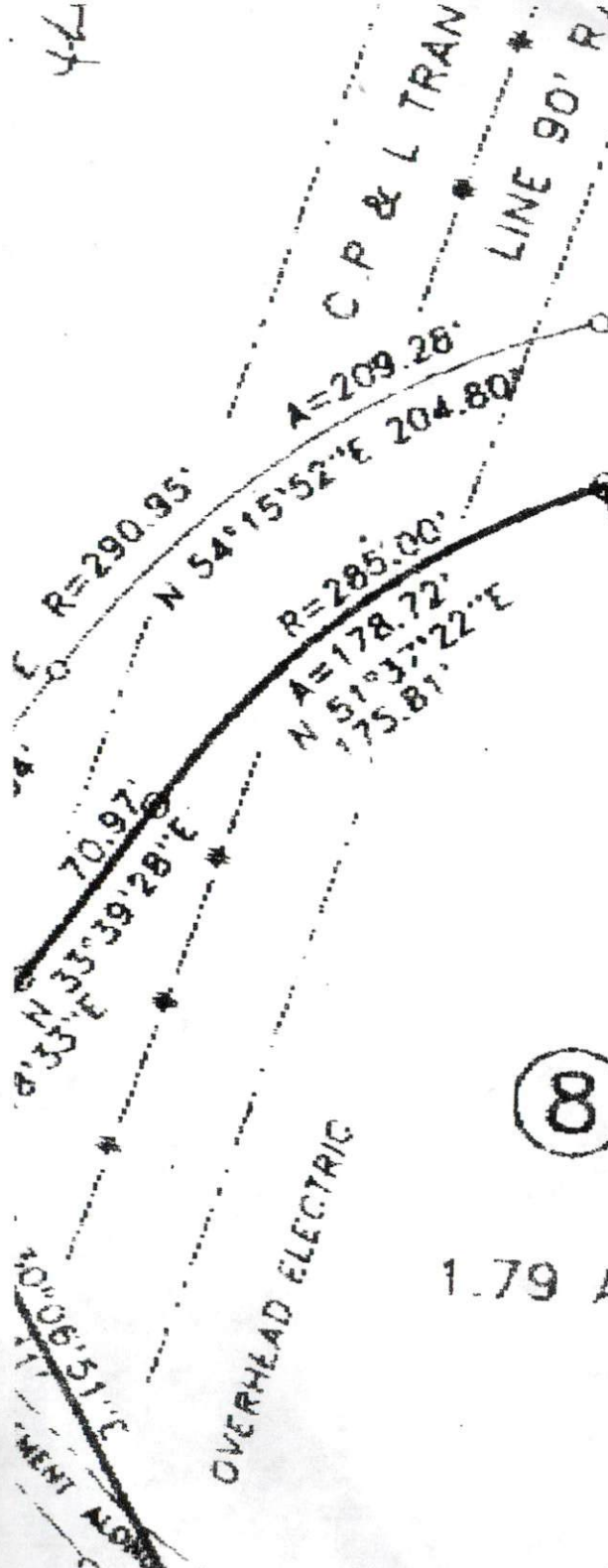
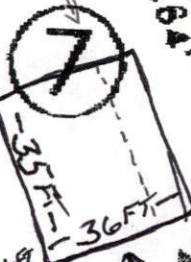


THORNTON'S CREEK



1.79 AC.

8



0.68 AC.

6

0.65 AC.

5

0.65 AC.

4

0.60 AC.

N 74°52'16"E 394.93'

N 74°52'16" 4.60'
R=870.5

A=95.4
N 78°00' 95.3

A=209.28'
N 54°15'52"E 204.80'

R=285.00'
A=178.72'
N 51°37'22"E 175.81'

LINE 90' R)

C.P. & L. TRAN

OVERHEAD ELECTRIC

PROPERTY ALONG

= 12' X 35' LEAN-TO
24' X 35' STORAGE BUILDING

N 74°52'16"E 100.00'

100.00'

73.77'

100.00'

100.00'

26.27'
N 72°13'46"E
A=226.78'

332.58'
N 21°15'54"W

S 18°20'39"E
314.64'

N 15°50'20"W
285.39'

S 15°25'22"E
274.45'

N 14°56'14"W
253.33'

100.00'

88.00'

100.00'

149"W