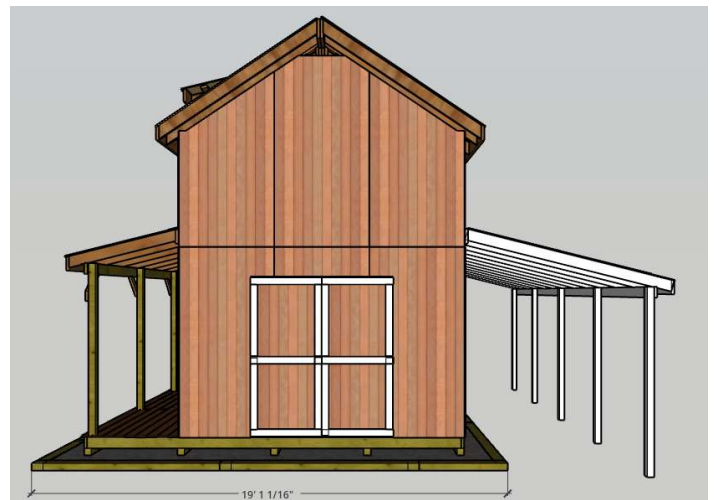
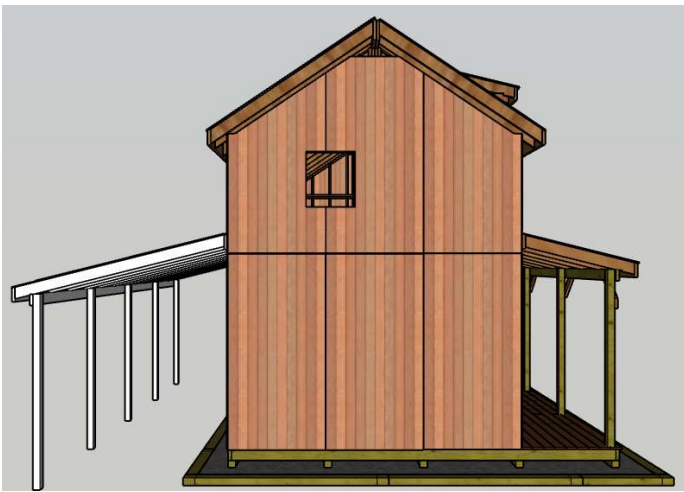
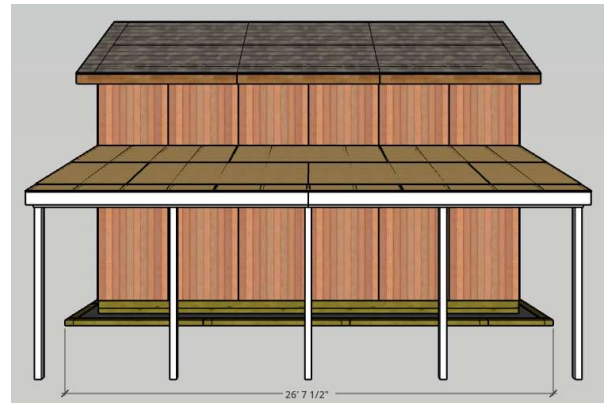
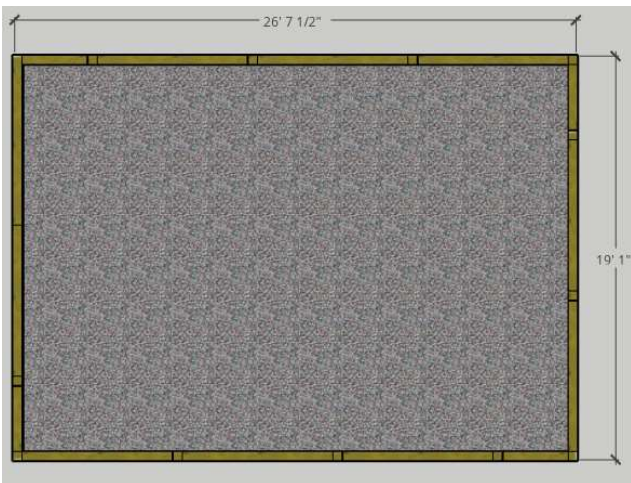


# Hunter Shed 12x24

REV1



# Hunter Shed 12x24

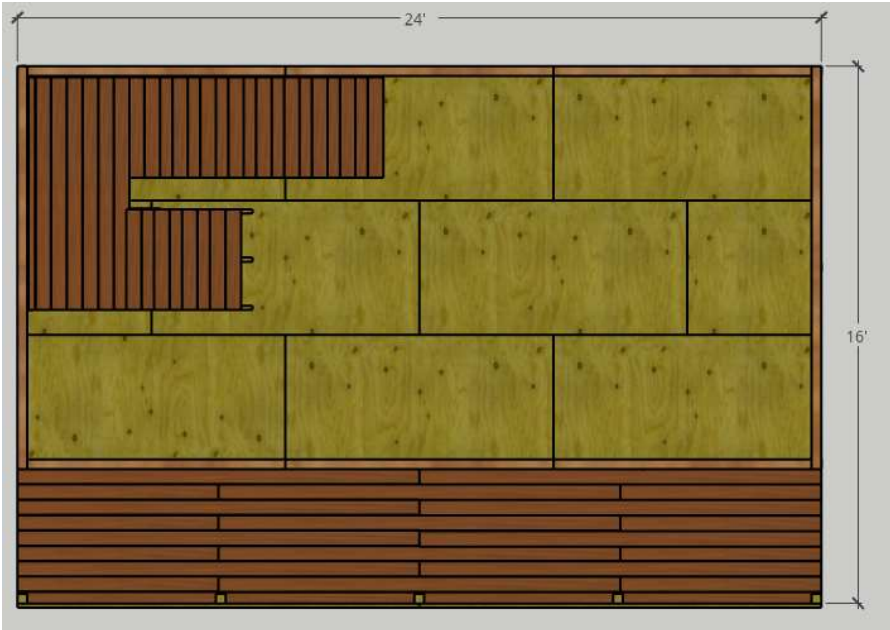


Foundation: Framed 4x6, 3/4" stone, 4" Clean Gravel base

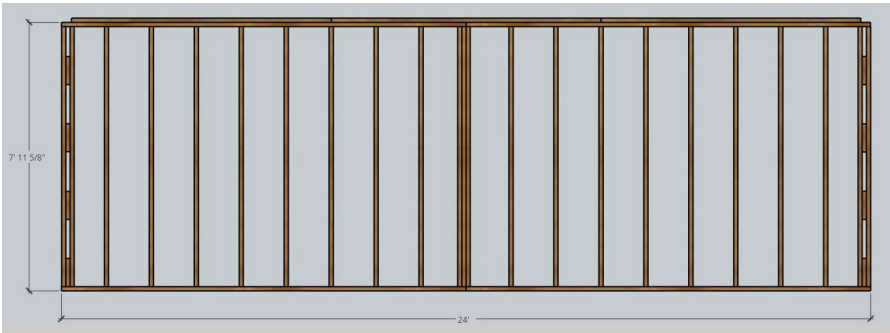


First Floor Joist system, 4x4 Runners w/ 2x6 joists, double support under posts, 6 Ground Anchors – corners & center

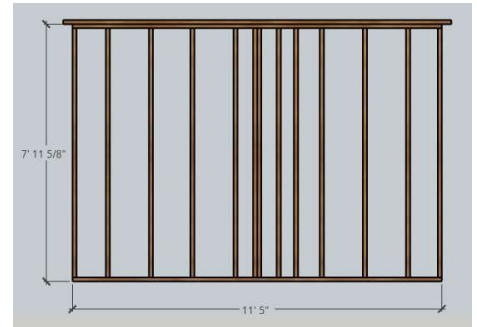
# Hunter Shed 12x24



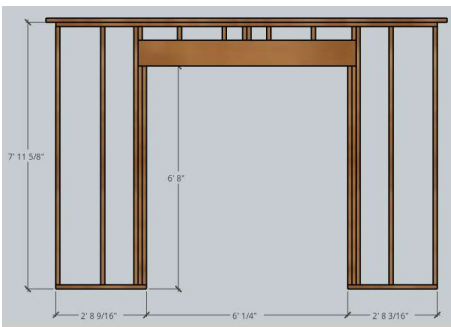
1<sup>st</sup> Floor, Floor Plan



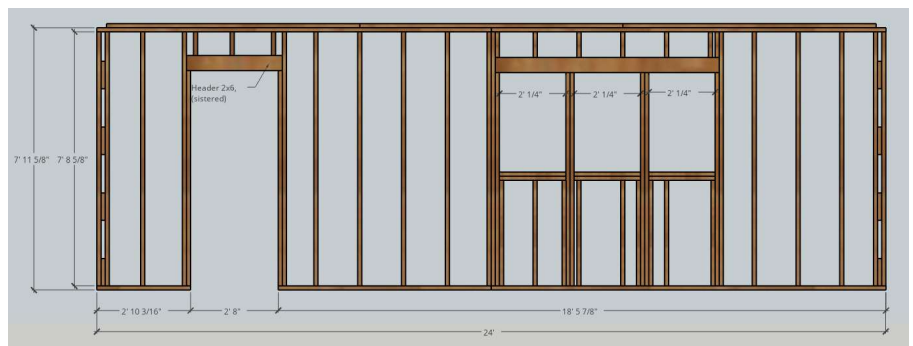
1<sup>st</sup> Floor Rear Wall Frame



1<sup>st</sup> Floor left side Wall Frame

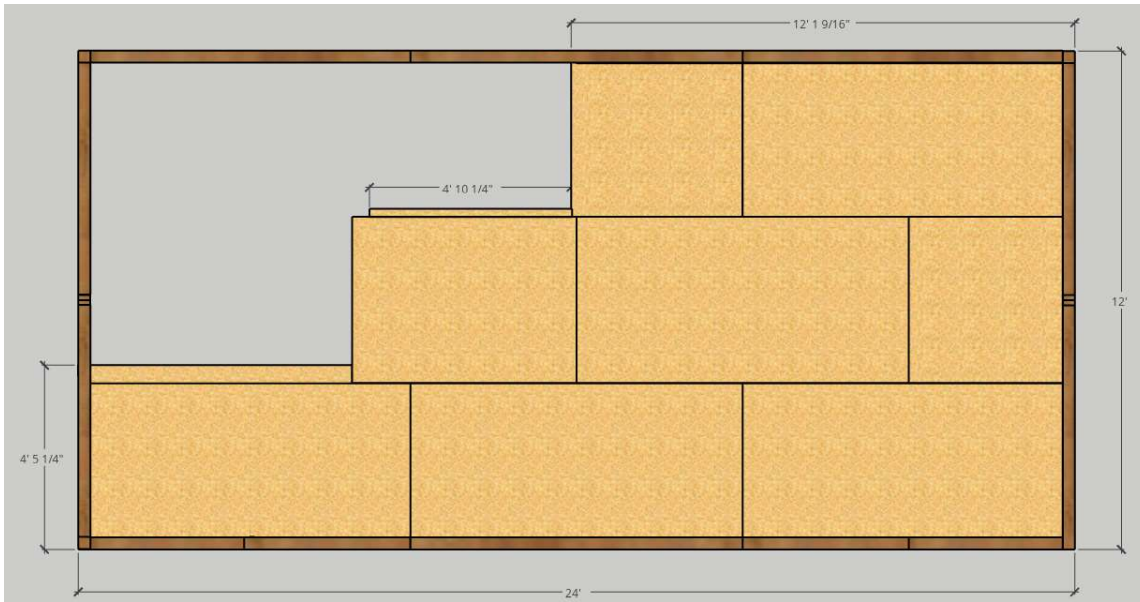


1<sup>st</sup> Floor, Right-Side Wall Frame

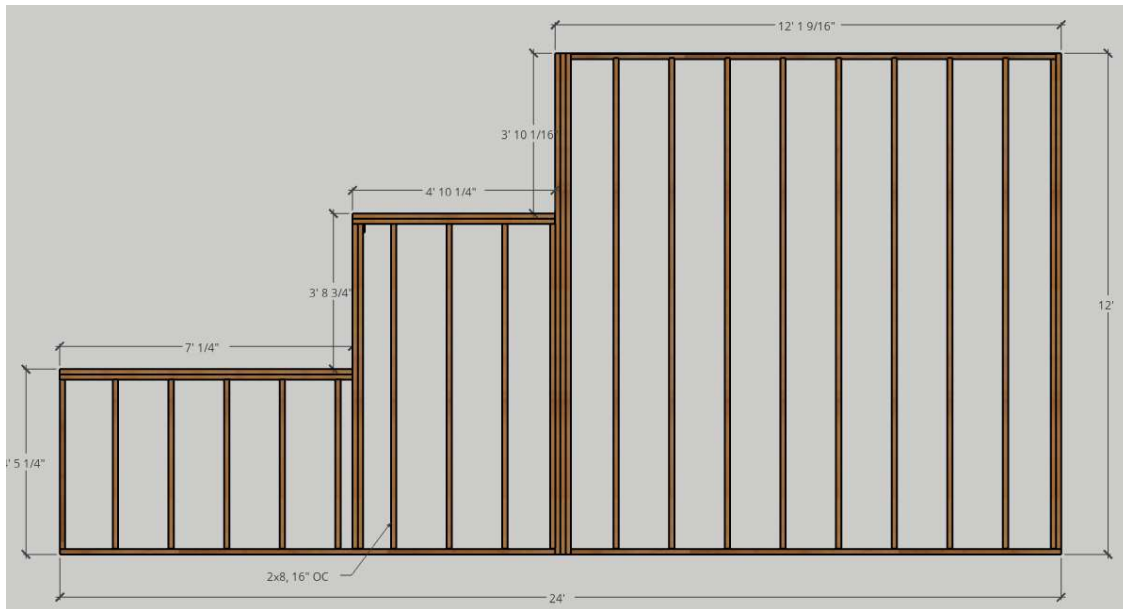


1<sup>st</sup> Floor Front Wall Frame

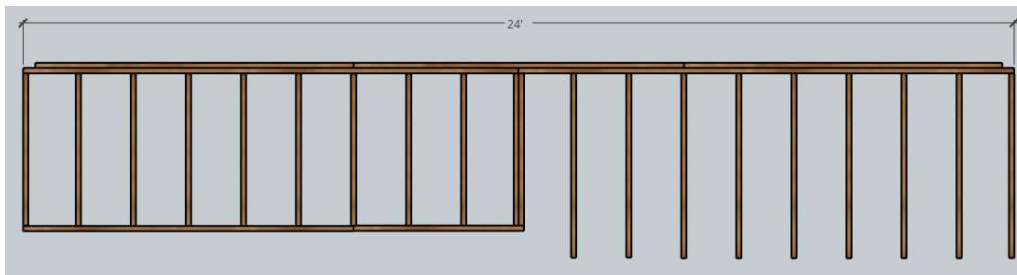
# Hunter Shed 12x24



2<sup>nd</sup> Floor, Floor Plan

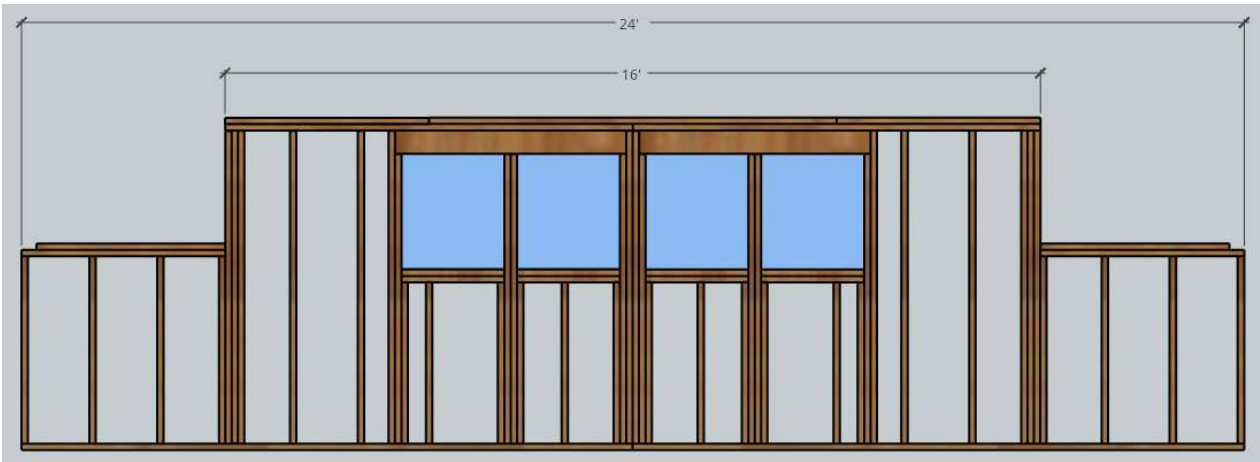


2<sup>nd</sup> Floor Joist system, 2x8, 16 OC

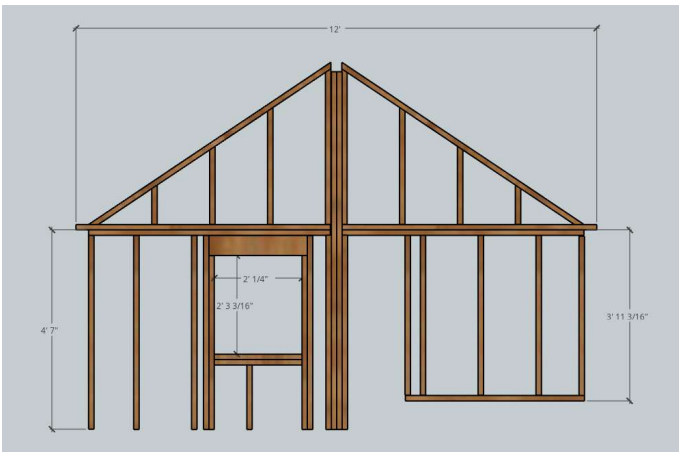


2<sup>nd</sup> Floor, Rear Wall Frame

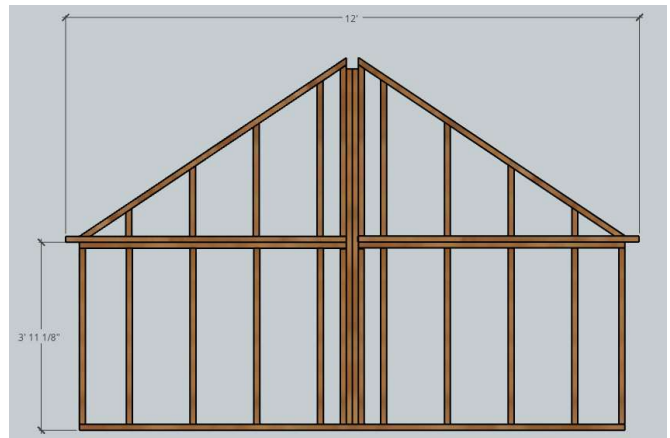
# Hunter Shed 12x24



2<sup>nd</sup> Floor, Front Wall Frame

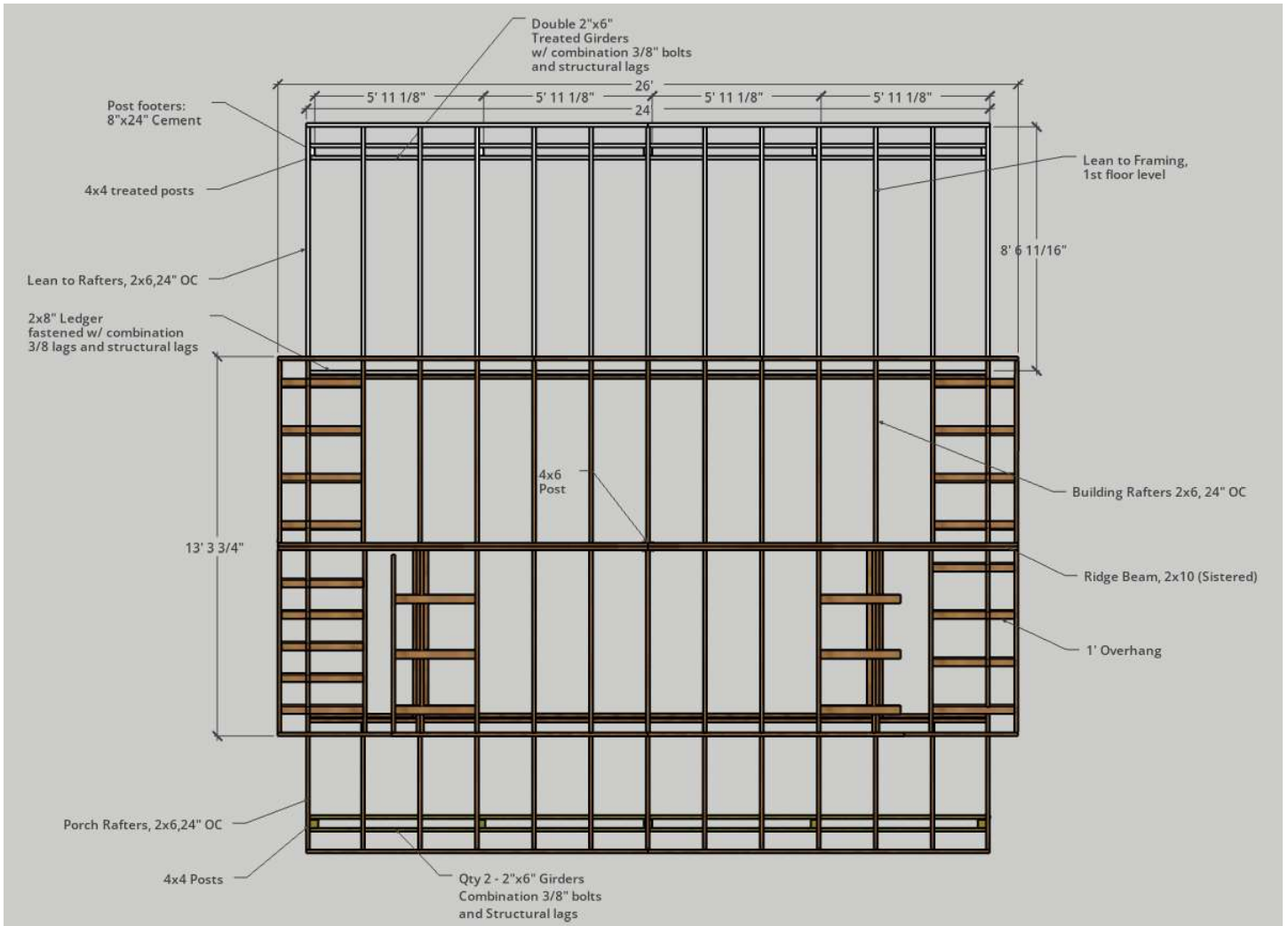


2<sup>nd</sup> Floor, Left-side Wall Frame



2<sup>nd</sup> Floor, Right-side Wall Frame

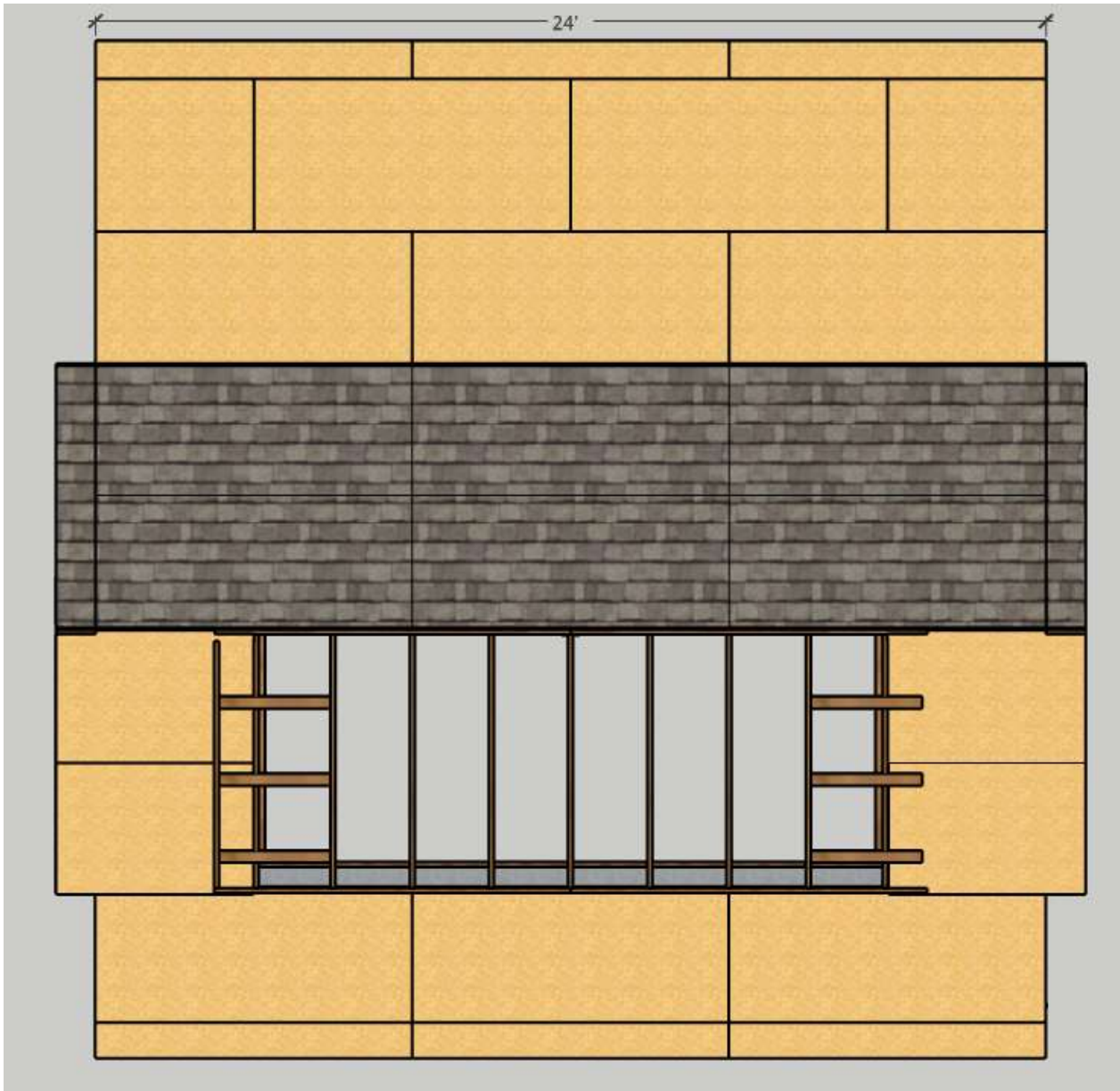
# Hunter Shed 12x24



Roof Rafter structure

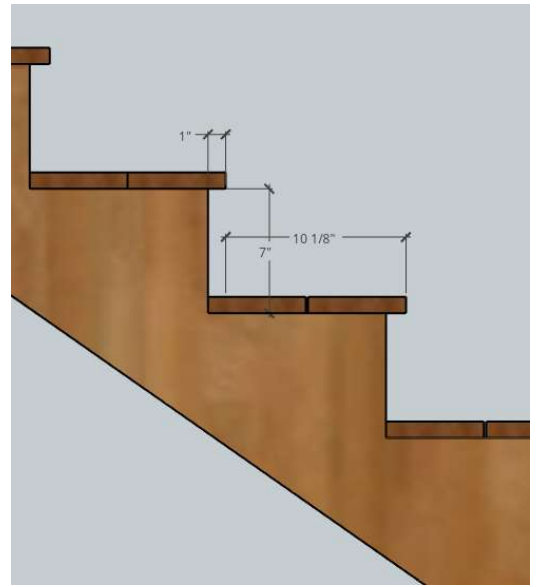
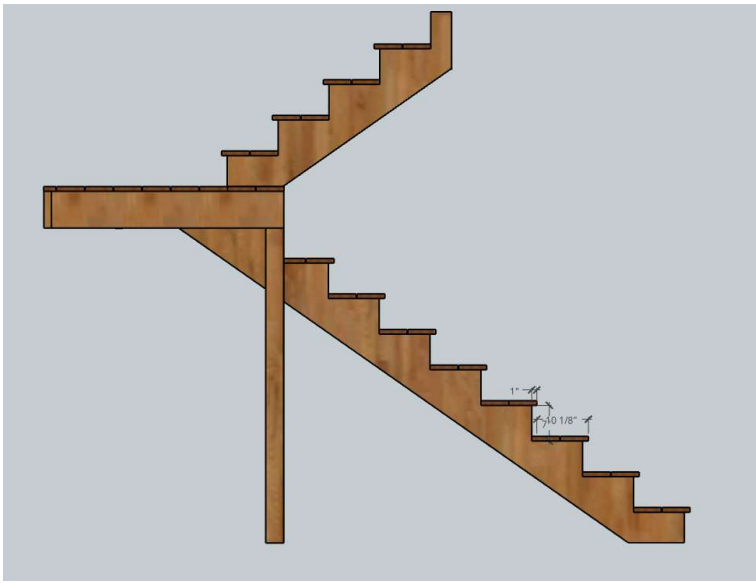


# Hunter Shed 12x24



Top View, Layered Roof, 9/16 Plywood w/ Asphalt Shingles

# Hunter Shed 12x24



Stair Structure & Detail