

NOTICE TO CONTRACTOR
 All construction must comply with current NC Building Code
 and is subject to field inspection and verification.

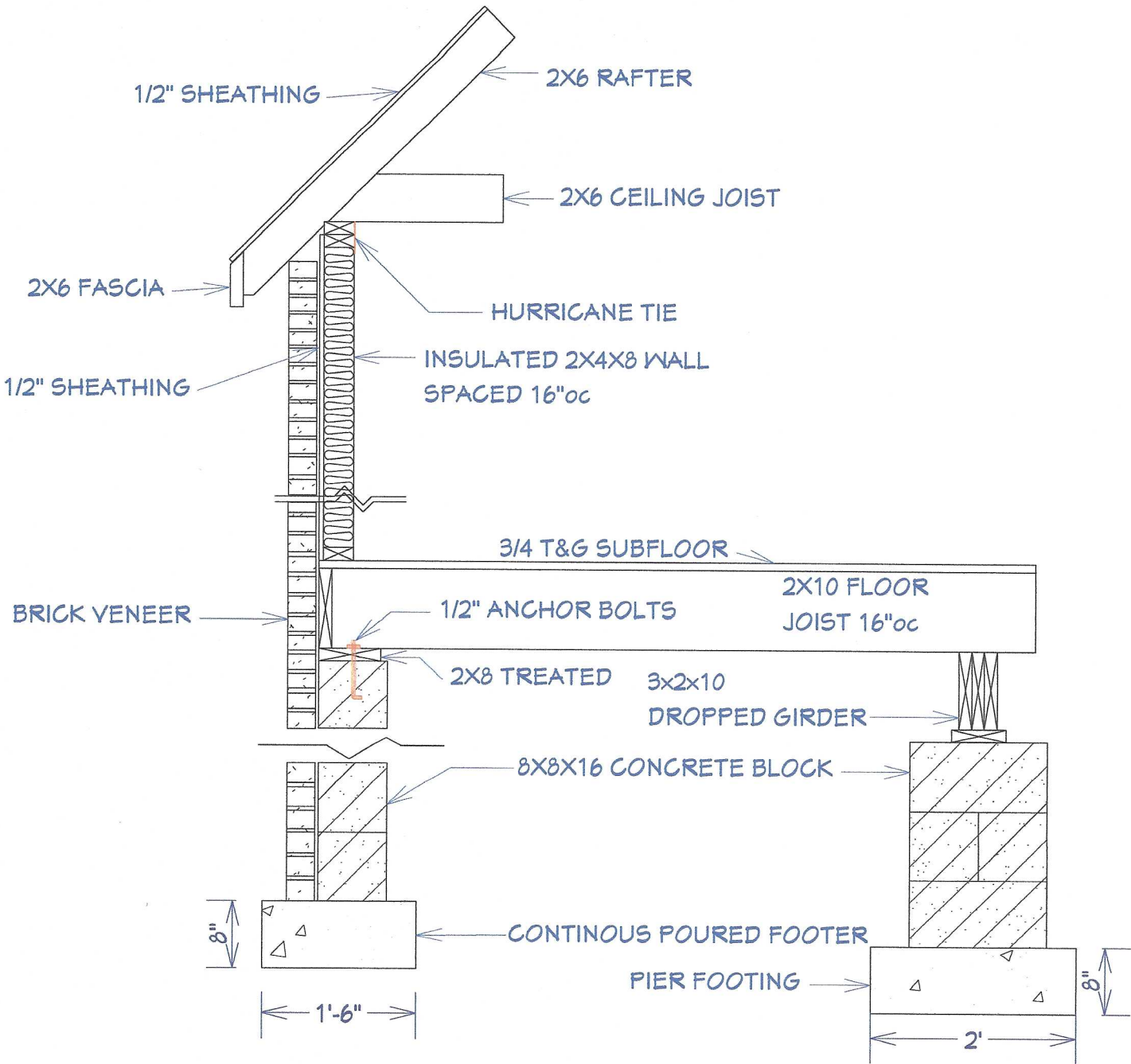
APPROVED
 Limited liability only license
 Permit holder responsible for
 full compliance with the code

07/03/2023

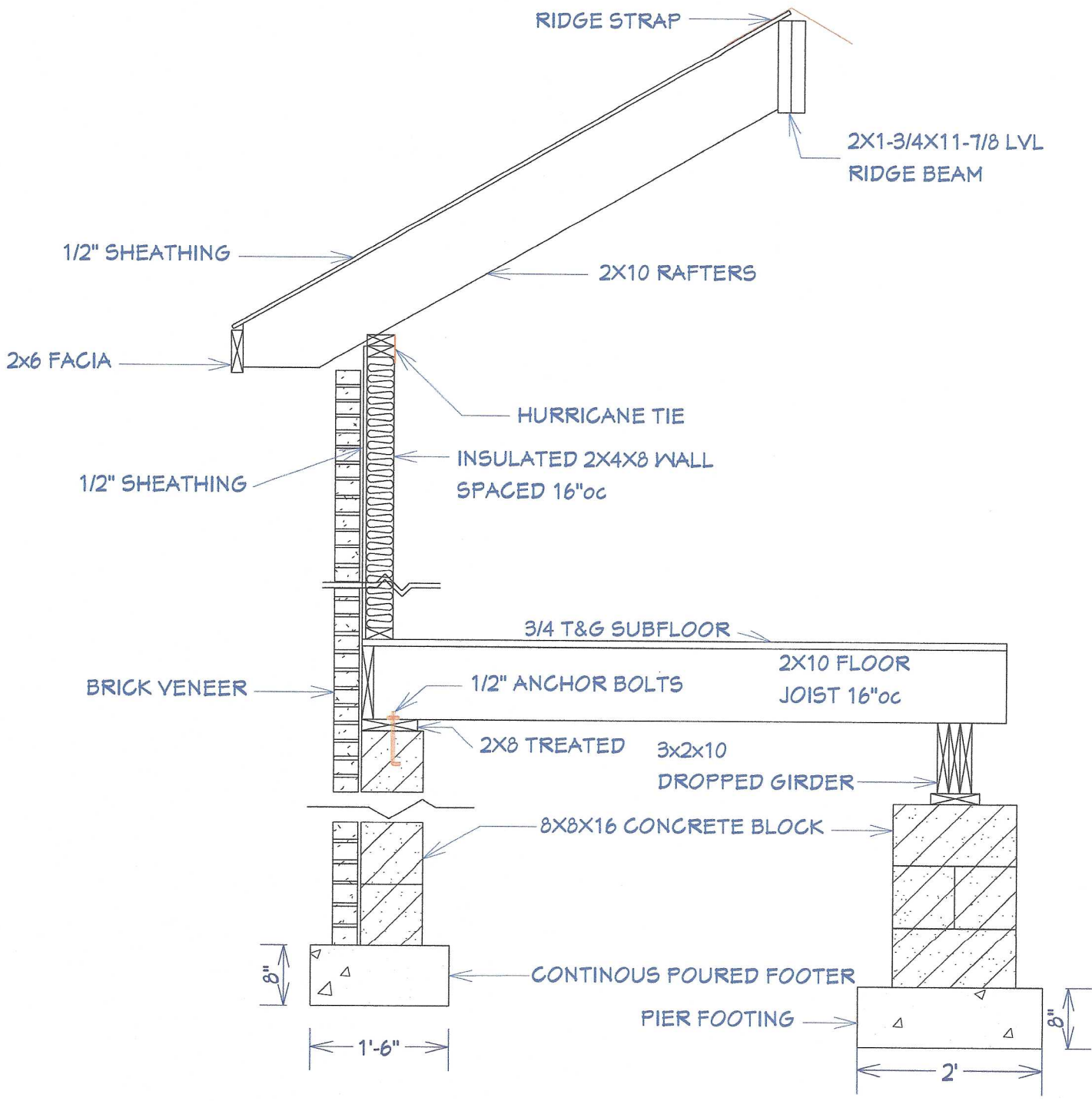
[Signature]

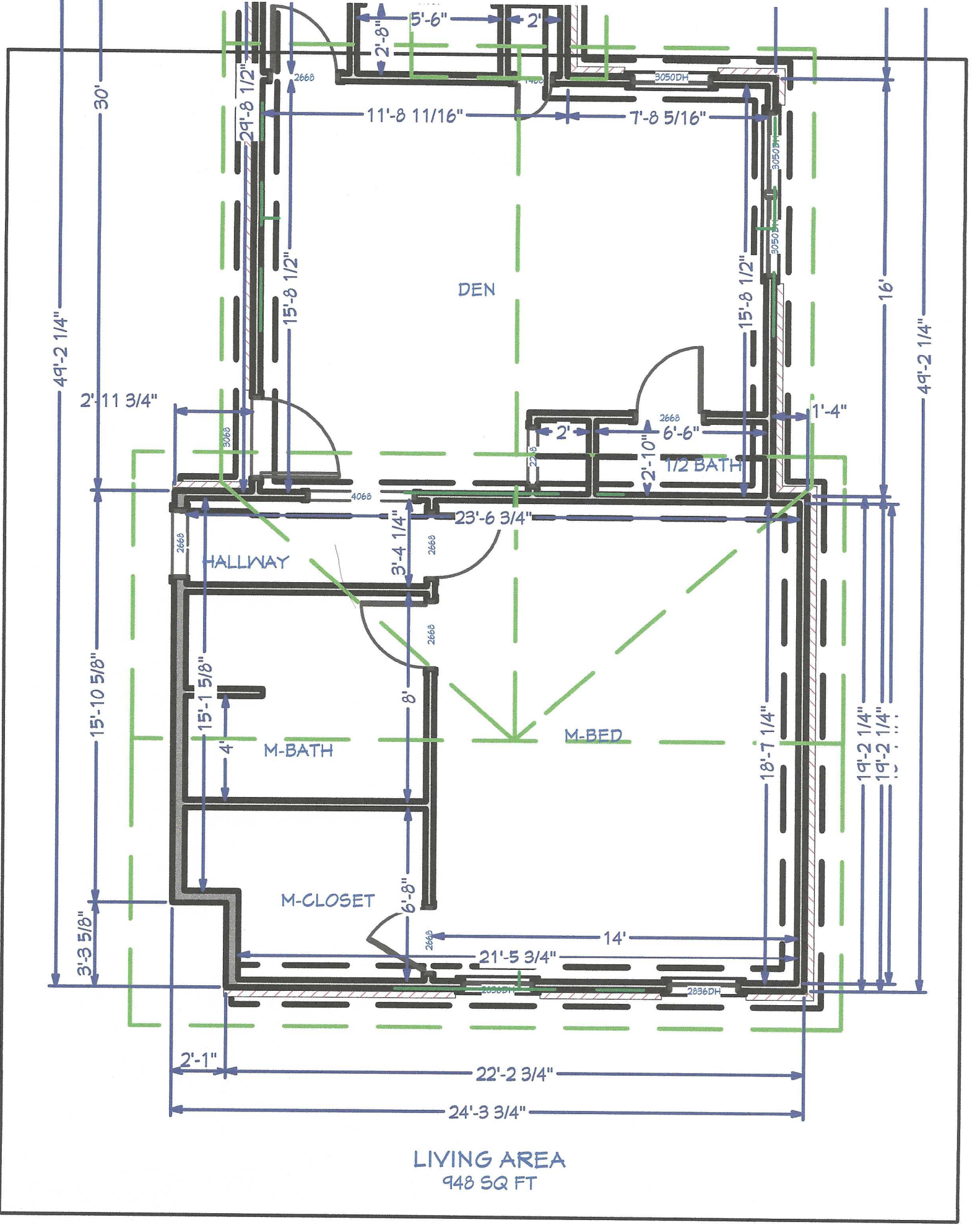
HARNETT COUNTY
 NORTH CAROLINA

WALL SECTION FOR BED 2 IN NEW ADDITION



ROOF AND WALL SECTION
OVER DEN IN ADDITION
(CATHEDRAL)





49'-2 1/4"

2'-11 3/4"

15'-10 5/8"

3'-3 5/8"

30'

29'-8 1/2"

2668

15'-8 1/2"

HALLWAY

15'-1 5/8"

M-BATH

M-CLOSET

2'-1"

DEN

M-BED

1/2 BATH

5'-6"

11'-8 11/16"

23'-6 3/4"

21'-5 3/4"

22'-2 3/4"

24'-3 3/4"

2'-8"

3'-4 1/4"

6'-8"

14'

18'-7 1/4"

2'-8"

2'-10"

2668

2668

2668

8'

2668

2668

2668

2668

2668

2668

2668

3050DH

2668

4068

2668

2668

2668

2668

2668

2668

2668

2668

2668

15'-8 1/2"

18'-7 1/4"

14'

22'-2 3/4"

24'-3 3/4"

2668

2668

2668

7'-8 5/16"

6'-6"

2668

2668

2668

2668

2668

2668

2668

2668

2668

2668

2668

1'-4"

2668

2668

2668

2668

2668

2668

2668

2668

2668

2668

2668

16'

19'-2 1/4"

14'

22'-2 3/4"

24'-3 3/4"

2668

2668

2668

49'-2 1/4"

16'

19'-2 1/4"

14'

22'-2 3/4"

24'-3 3/4"

2668

2668

2668

LIVING AREA
948 SQ FT

