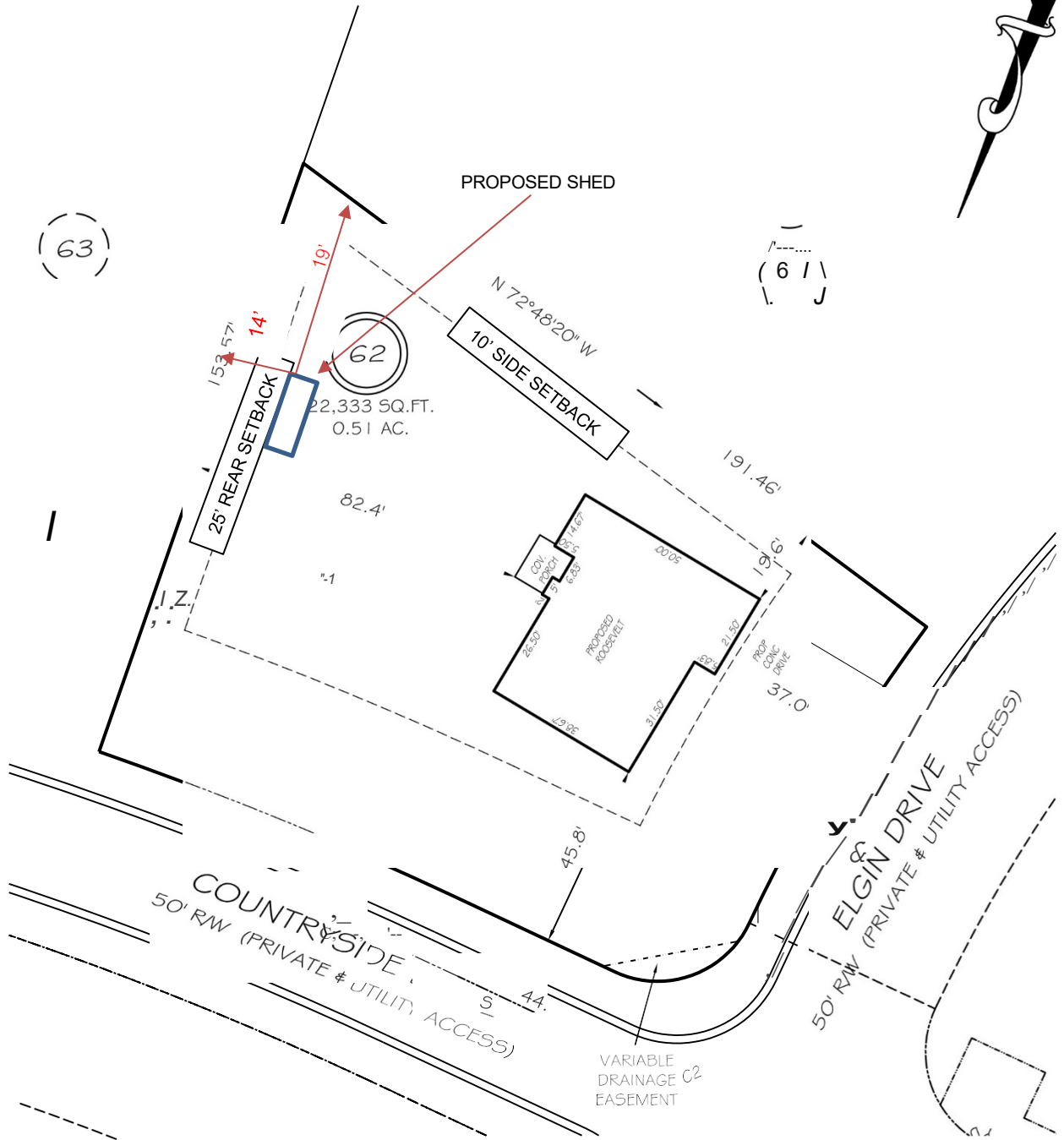


[Grab your reader's attention with a great quote from the document or use this space to emphasize a key point. To place this text box anywhere on the page, just drag it.]

I, MICHAEL P. GRIFFIN, certify that under my direction and supervision this map was drawn from an actual field survey; that the error of closure of the survey as calculated by coordinates is 1: 10,000+; that the area shown hereon was calculated by coordinates.
Witness my hand and seal this day of MONTH 2022.

BK 2021 PG 159-161
HARRITT CO. REGISTRY



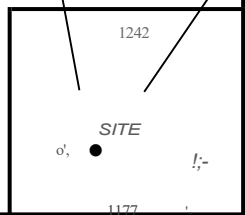
REVISION: RIGHT HAND; ADD FP 2/25/22
REVISION: NEW PLANS 2/22/22
C1 R=897.77' L=94.0' S 587°17'48\"/>

SETBACKS

FRONT	35'
REAR	25'
SIDE	10'
CORNER	20'

LEGEND

EIP	EXISTING IRON PIPE	FES	FLARED END SECTION
IFS	IRON PIPE SET	WM	WATER METER
RAW	RIGHT OF WAY	CO	CLEANOUT
N/F	NOW OR FORMERLY	FH	FIRE HYDRANT
E/S	EXISTING IRON STAKE	CB	CATCH BASIN



P R E L M I N A R Y

NOT FOR RECORDATION,
SALES OR CONVEYANCE



GRIFFIN LAND SURVEYING, INC.

P. O. BOX 148
FUQUAY-VARINA, NC 27526
(919) - 567-1963

PLOT PLAN
FOR

DRAWN BY NMF

DATE

/15/22

H 8 H HOMES

OAKMONT LOT 62

C H E C K E D B Y M P G

S C A L E 1" = 40'

ELGIN DRIVE
NORTH CAROLINA
HARNETT COUNTY BARBECUE TOWNSHIP