

Harnett GIS

NOT FOR LEGAL USE



Harnett County © IS

Surrounding County Boundaries	Airport	Roads	Cape Fear River
City Limits	Major Roads	Mile_Markers	
County Boundary	Interstate	Mile_Markers	
Address Numbers	NC	Railroad	
	US	Parcels	

1 inch = 188 feet

GIS/E-911 Addressing
May 17, 2023

W

LEGEND

- FIP-----Found Iron Pipe
 - SIP-----Set Iron Pipe
 - FCM-----Found Concrete Monument
 - FPKN-----Found P.K. Nail
 - SPKN-----Set P.K. Nail
 - FIB-----Found Rebar
 - SIB-----Set Rebar
 - CL-----Centerline
 - PNE-----Point Not Established
 - FRRS-----Found Railroad Spike
- NOTE: All measurements shown are horizontal ground measurements unless otherwise noted.

Area computed by coordinates.

Area computed by coordinates.

Area computed by coordinates.

Area computed by coordinates.

Area computed by coordinates.

Area computed by coordinates.

Area computed by coordinates.

Area computed by coordinates.

Area computed by coordinates.

Area computed by coordinates.

Area computed by coordinates.

Area computed by coordinates.

Area computed by coordinates.

Area computed by coordinates.

Area computed by coordinates.

Area computed by coordinates.

Area computed by coordinates.

Area computed by coordinates.

Area computed by coordinates.

Area computed by coordinates.

Area computed by coordinates.

Area computed by coordinates.

Area computed by coordinates.

Area computed by coordinates.

Area computed by coordinates.

Area computed by coordinates.

Area computed by coordinates.

Area computed by coordinates.

Area computed by coordinates.

Area computed by coordinates.

Area computed by coordinates.

Area computed by coordinates.

Area computed by coordinates.

Area computed by coordinates.

Area computed by coordinates.

Area computed by coordinates.

Area computed by coordinates.

Area computed by coordinates.

Area computed by coordinates.

Area computed by coordinates.

Area computed by coordinates.

Area computed by coordinates.

Area computed by coordinates.

Area computed by coordinates.

Area computed by coordinates.

Area computed by coordinates.

Area computed by coordinates.

Area computed by coordinates.

Area computed by coordinates.

Area computed by coordinates.

Area computed by coordinates.

Area computed by coordinates.

Area computed by coordinates.

Area computed by coordinates.

Area computed by coordinates.

Area computed by coordinates.

Area computed by coordinates.

Area computed by coordinates.

Area computed by coordinates.

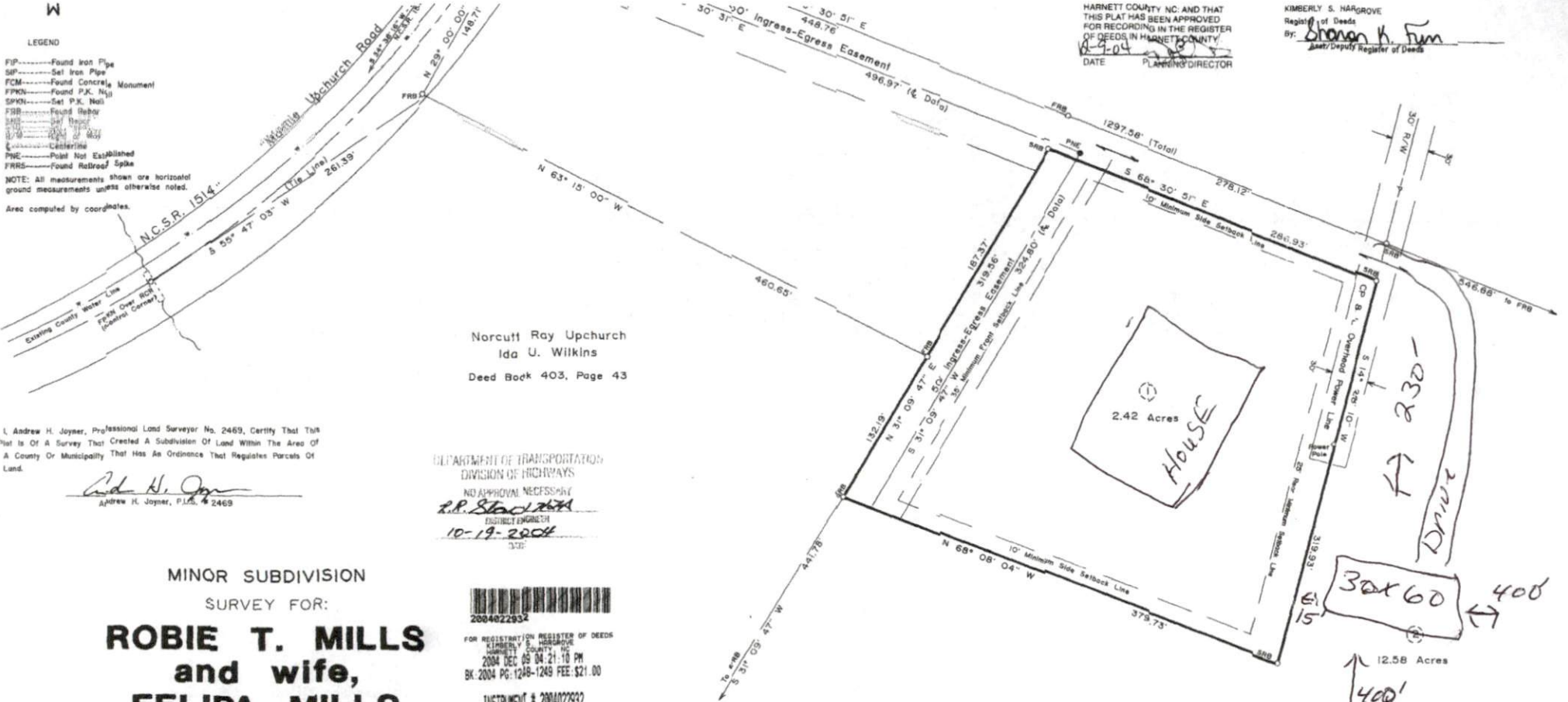
Area computed by coordinates.

HARNETT COUNTY NC. AND THAT THIS PLAT HAS BEEN APPROVED FOR RECORDING IN THE REGISTER OF DEEDS IN HARNETT COUNTY, N.C.

DATE: 11-15-04

PLANNING DIRECTOR

KIMBERLY S. HARGROVE
 Register of Deeds
 By: Sharon K. Kim
 Asst./Deputy Register of Deeds



Norcutt Ray Upchurch
 Ida U. Wilkins
 Deed Book 403, Page 43

I, Andrew H. Joyner, Professional Land Surveyor No. 2469, Certify That This Plat Is Of A Survey That Created A Subdivision Of Land Within The Area Of A County Or Municipality That Has An Ordinance That Regulates Parcels Of Land.

Andrew H. Joyner
 Andrew H. Joyner, P.L.S. # 2469

DEPARTMENT OF TRANSPORTATION
 DIVISION OF HIGHWAYS
 NO APPROVAL NECESSARY
R.R. Stedman
 ENGINEER
 10-19-2004

MINOR SUBDIVISION
 SURVEY FOR:

**ROBIE T. MILLS
 and wife,
 FELIPA MILLS**
 (15.00 Acres Total)

1405 Soder Road, Dunn, N.C. 28334

NEILL'S CREEK TWP., HARNETT COUNTY, N.C.

SURVEY BY: JOYNER PIEDMONT SURVEYING
 105 East Cumberland Street, P.O. Box 115, Dunn, N.C. 28334
 Phone (910) 892-2051

ZONE: RA-30 SEPTEMBER 16, 2004 SCALE: 1" = 60'



Out Of PIN # 0661-96-3310.000



FOR REGISTRATION REGISTER OF DEEDS
 KIMBERLY S. HARGROVE
 HARNETT COUNTY, NC
 2004 DEC 09 04:21:10 PM
 BK 2004 PG 1248-1249 FEE \$21.00
 INSTRUMENT # 2004022932

The lot(s) on this plat have been evaluated by a private consultant. Based on this review it appears that lot(s) on this plat meet appropriate regulations. Note that final approval for such a registration issuance of the appropriate Harnett County Health Department for specific use or siting in accordance with regulations in force at the time of permitting this certification does not represent approval or a permit for any site work.

11/15/04
 Date Harnett County Environmental Health Department

NOTE: Deed Reference: Deed Book 1923, Page 676
 Map # 2004-295



I, Andrew H. Joyner, a Registered Land Surveyor, certify that this plat was drawn by me or under my direct supervision and that I am a duly licensed and registered professional land surveyor in the State of North Carolina. I am duly licensed and registered in the State of North Carolina. I am duly licensed and registered in the State of North Carolina. I am duly licensed and registered in the State of North Carolina.

Andrew H. Joyner
 Registered Professional Land Surveyor
 No. 2469

mcp # 2004-1248