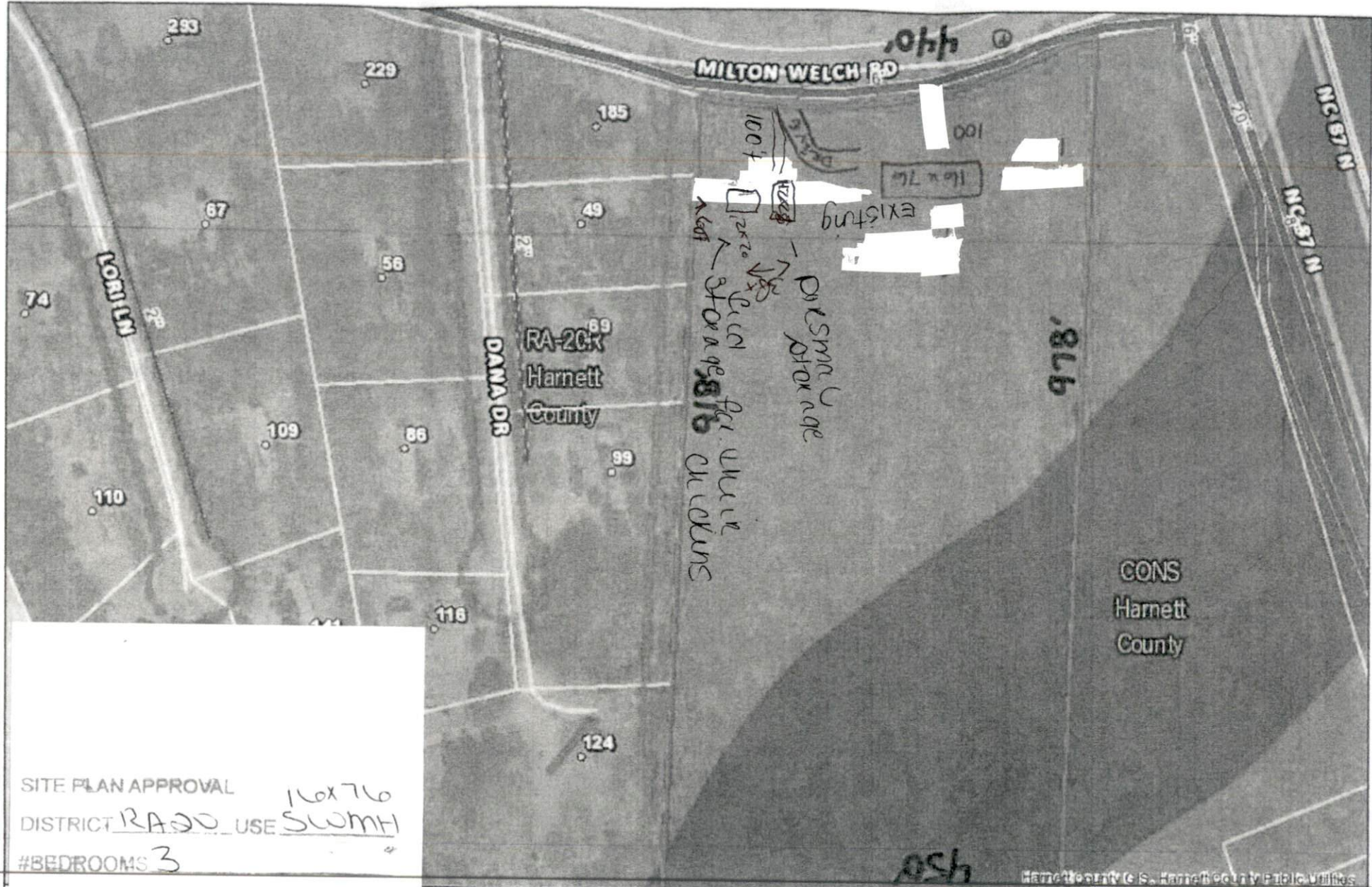


Harnett GIS

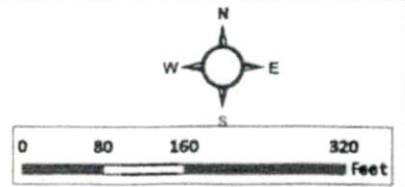
NOT FOR LEGAL USE



SITE PLAN APPROVAL
 DISTRICT RA20 USE SWMH
 #BEDROOMS 3

K.A.G.
 ZONING ADMINISTRATOR

- City Limits
- Harnett County Boundary
- Schools**
 - School - Elementary
 - School - High
 - School - Middle
 - School - Primary
- Address Numbers
- Force Main
- Gravity



Harnett County (c) 2014 Harnett County Public Utilities