

EXISTING Double Jack Top

EXISTING Garage door  
 Opening  
 Close in add twin  
 window  
 6'-0" x 6'-2"

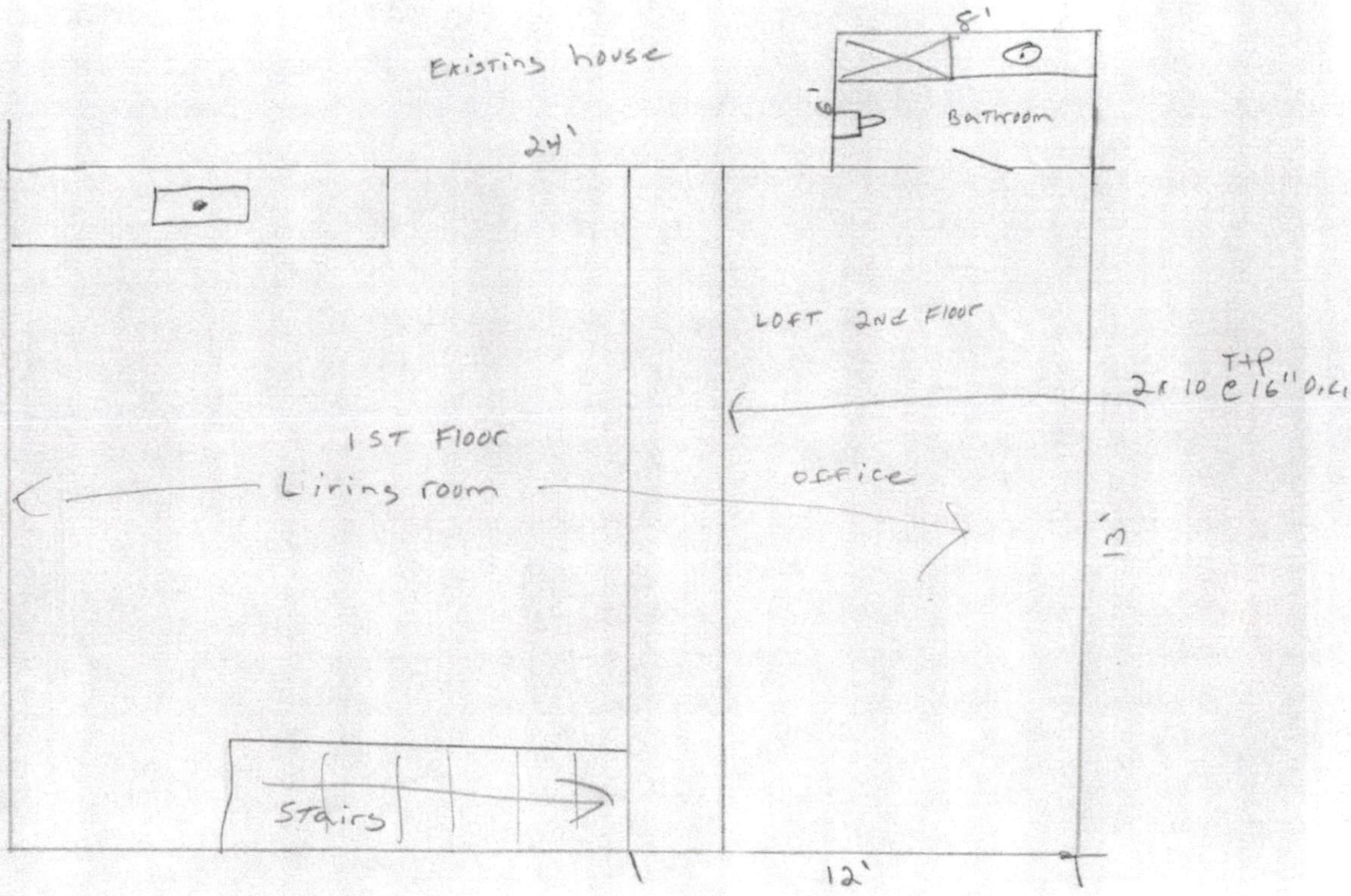
EXISTING Headcasing

7/16 OSB

2x4 16" o.c.

2x4 PT Plate

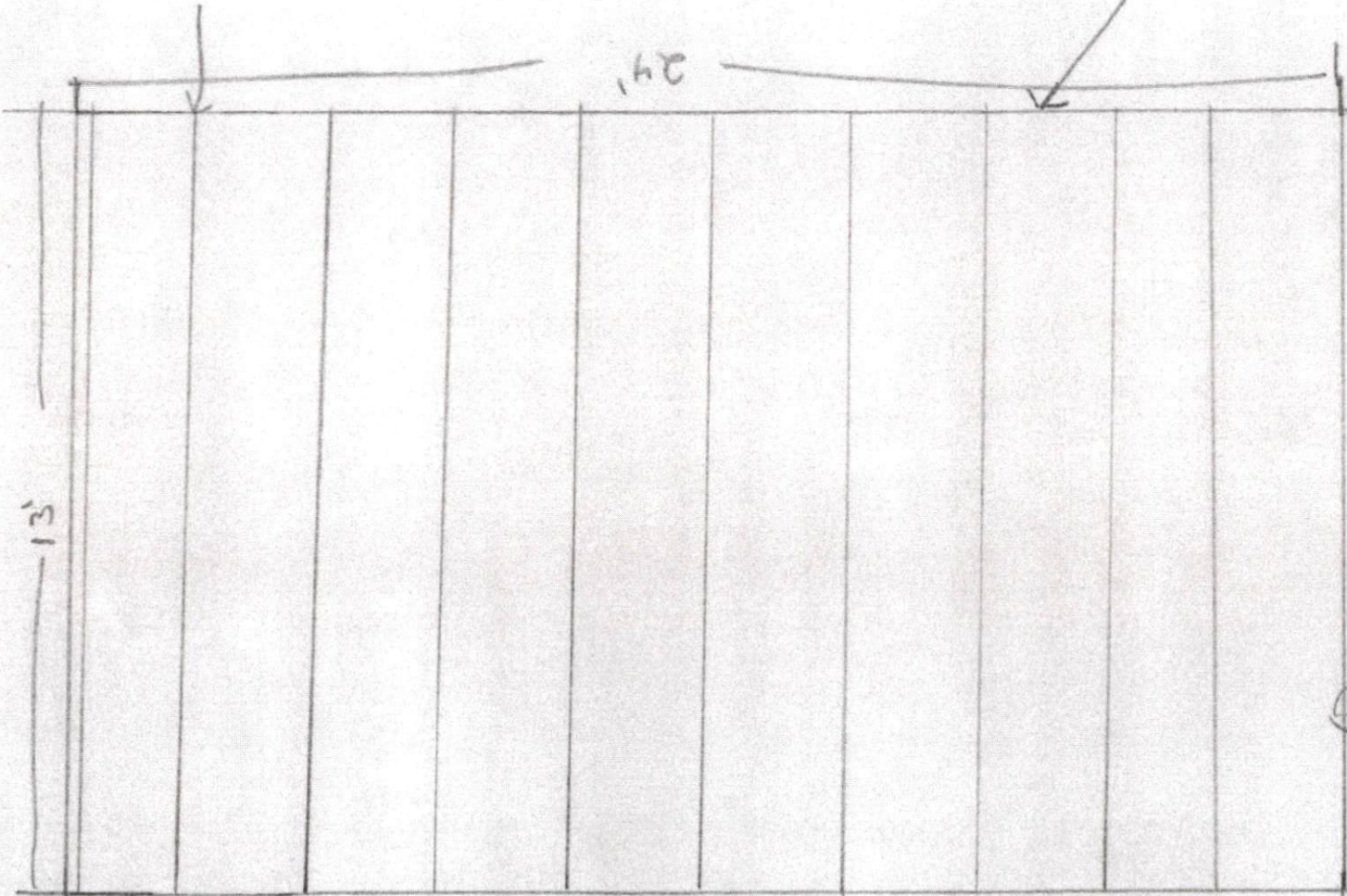
Anchor 5/8 Redheads



1st Floor

2x10 16" O.C.  
TAP FLOOR Joists

2x10 BAN Bolted with Ledger LOTS  
& 16" O.C. STAGGERED  
BOLTED TO EXTERIOR WALL STUDS



3/4 OSB  
SUBFLOOR

2x10 BAN Bolted with Ledger LOTS  
& 16" O.C. STAGGERED TO EXISTING AXID

2x2 Ledger  
TAP

Existing house

