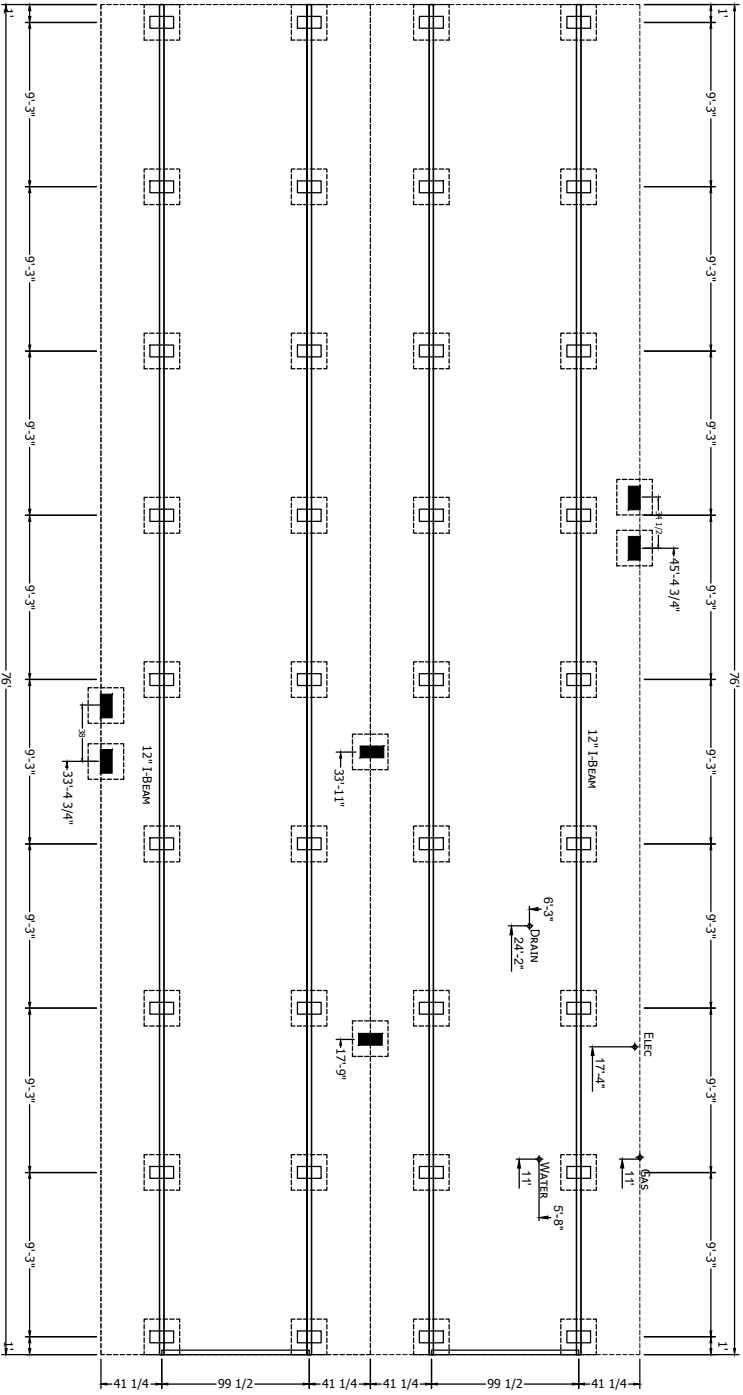


**REFER TO INSTALLATION MANUAL FOR ALL LOADS, PIER, PAD & FOOTER REQUIREMENTS**



- 1) THE MANUFACTURER ASSUMES NO RESPONSIBILITY FOR ACTUAL FOUNDATION DESIGN AND CONSTRUCTION.
- 2) ADDITIONAL BLOCKING IS REQUIRED AT EACH SIDE OF EXTERIOR DOORS AND AT EACH SIDE OF SIDEWALL OPENINGS GREATER THAN 4 FEET IN WIDTH (I.E., PATIO DOORS, PICTURE WINDOWS, ETC.).
- 3) FOR PIER REQUIREMENTS AT ENDWALL SEE FIGURE 8 IN THE INSTALLATION MANUAL.
- 4) ALL DWG./ PLUMBING, GAS SUPPLY, ETC., DIMENSIONS ON PRINT MAY BE + OR - 1/2".
- 5) IT WILL BE THE RESPONSIBILITY OF THE SITE CONTRACTOR TO VERIFY THE PROPER LOCATION OF COLUMN SUPPORT BLOCKING AND TO VERIFY THE PROPER MATING LINE GROWTH DIMENSIONS BASED UPON ACTUAL SITE CONDITIONS AND REQUIREMENTS (DOUBLE WIDES ONLY).
- 6) ALLOW 1/2" AT MATING LINE FOR WASTE UP GROWTH.
- 7) SEE SET-UP AND INSTALLATION MANUAL FOR PERIMETER BLOCKING REQUIREMENTS.
- 8) FOOTER SIZES ARE DEPENDENT ON MATERIAL USED. SOIL CONDITIONS, AND LOADS GENERATED FROM THE INSTALLATION MANUAL.

PERMANENT FOUNDATIONS: CHECK LOCAL BUILDING CODES AND REGULATIONS AND CONSULT A REGISTERED PROFESSIONAL OR STRUCTURAL ENGINEER WHEN YOU ARE SITING YOUR HOME ON A PERMANENT FOUNDATION (SUCH AS A FULL BASEMENT, CRAWL SPACE, OR LOAD BEARING PERIMETER FOUNDATION).

PLEASE READ AND UNDERSTAND THE FOLLOWING INFORMATION. THE MANUFACTURER DOES NOT DO FOUNDATION INSTALLATION OF HOMES. IT WILL BE THE RESPONSIBILITY OF THE DEALER/SITE CONTRACTOR TO INSURE THAT ALL SITE WORK WILL CORRELATE WITH THE UNIT ORDERED.

NOTICE TO HOME INSTALLERS: MANUFACTURED HOMES WEIGH SEVERAL TONS. DO NOT ATTEMPT TO INSTALL ANY HOME ON SITE WITHOUT HAVING EXPERIENCE, KNOWLEDGE, AND UNDERSTANDING OF ALL INSTALLATION REQUIREMENTS. FAILURE TO MEET THESE REQUIREMENTS MAY RESULT IN SERIOUS INJURY OR DEATH TO AN INEXPERIENCED INSTALLER. INSTALLERS PLEASE READ AND UNDERSTAND THE SET-UP AND INSTALLATION MANUAL SUPPLIED WITH THE HOME BEFORE ATTEMPTING ANY INSTALLATION OF ANY MANUFACTURED HOME.

PROJECT: **3276H42P03**  
**76'-0" X 30'-4"**  
**4 BD 2 BT**

DRAWN BY: KACI ELLISON  
 DATE: 04-14-23  
 SCALE: 3/16" = 1'-0"

TITLE: **PIER FOUNDATION PLAN**

FILENAME: 3276H42P03

SHEET: **PR-101**

PROPRIETARY AND CONFIDENTIAL. THESE DRAWINGS AND CONSTRUCTION MATERIALS ARE THE PROPERTY OF CHAMPION HOME BUILDERS. COMMENT # 3725 2023 BY CHAMPION

**CHAMPION HOME BUILDERS**  
 285 W. WABER ROAD, SUITE 1000, TROY, MI 48064  
 HOME 32441-4300