

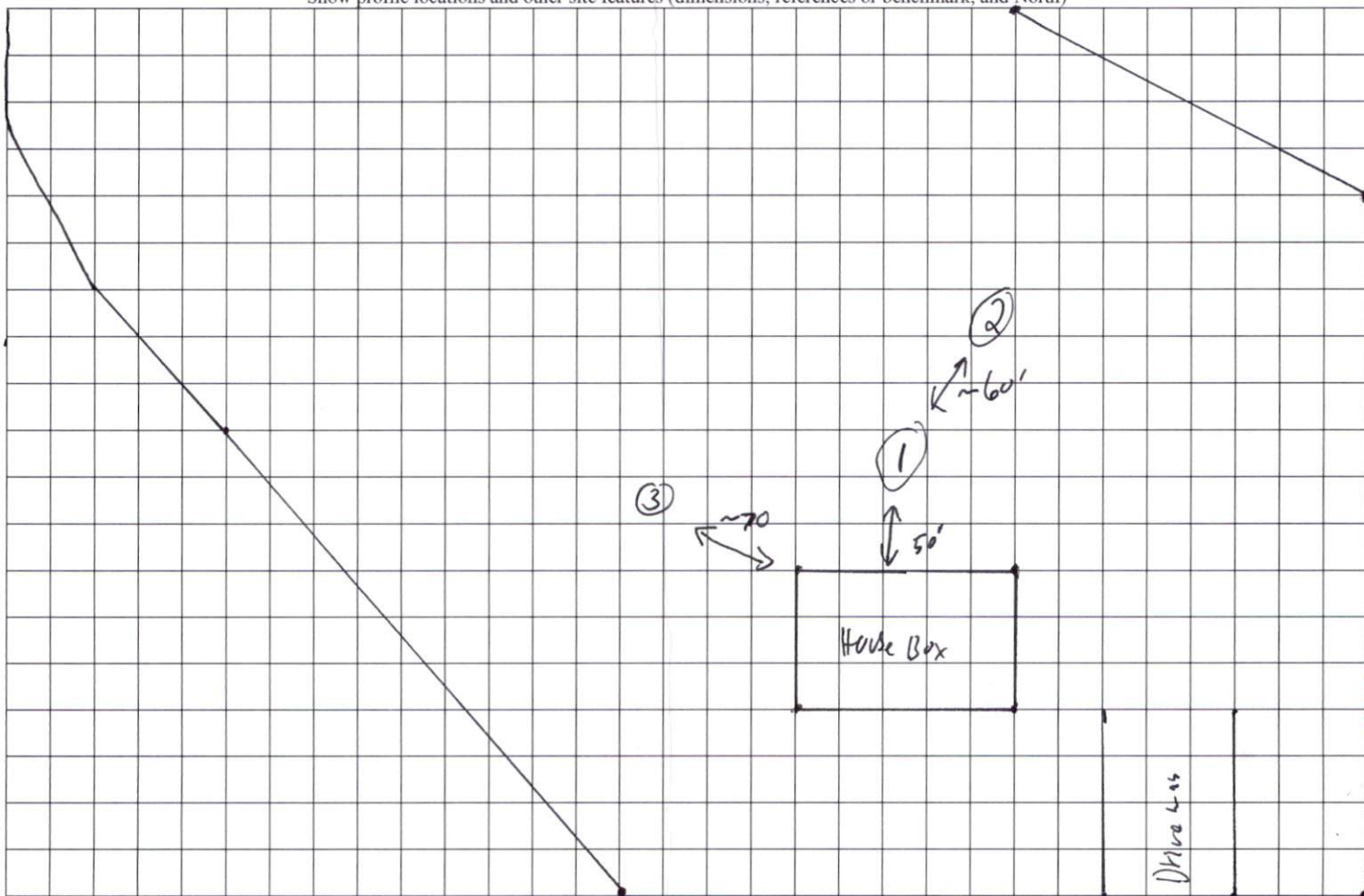


COMMENTS: \_\_\_\_\_

LANDSCAPE POSITIONS	GROUP	TEXTURES	.1955 LTAR	CONSISTENCE MOIST	WET
R-RIDGE	I	S-SAND	1.2 - 0.8	VFR-VERY FRIABLE FR-FRIABLE	NS-NON-STICKY SS-SLIGHTLY STICKY
S-SHOULDER SLOPE		LS-LOAMY SAND			
L-LINEAR SLOPE	II	SL-SANDY LOAM	0.8 - 0.6	FI-FIRM VFI-VERY FIRM	S-STICKY VS-VERY STICKY
FS-FOOT SLOPE		L-LOAM			
N-NOSE SLOPE	III	SI-SILT	0.6 - 0.3	EFI-EXTREMELY FIRM	NP-NON-PLASTIC SP-SLIGHTLY STICKY
H-HEAD SLOPE		SIL-SILT LOAM			
CC-CONCLAVE SLOPE		CL-CLAY LOAM			
CV-CONVEX SLOPE		SCL-SANDY CLAY LOAM			
T-TERRACE	IV	SIC-SILTY CLAY	0.4 - 0.1		P-PLASTIC VP-VERY PLASTIC
FP-FLOOD PLAN		C-CLAY SC-SANDY CLAY			

- |   |  |
|---|--|
| <p><u>STRUCTURE</u></p> <ul style="list-style-type: none"> <li>SG-SINGLE GRAIN</li> <li>M- MASSIVE</li> <li>CR-CRUMB</li> <li>GR-GRANULAR</li> <li>SBK-SUBANGULAR BLOCKY</li> <li>ABK-ANGULAR BLOCKY</li> <li>PL-PLATY</li> <li>PR-PRISMATIC</li> </ul> | <p><u>MINERALOGY</u></p> <ul style="list-style-type: none"> <li>SLIGHTLY EXPANSIVE</li> <li>EXPANSIVE</li> </ul> |
|---|--|

Show profile locations and other site features (dimensions, references or benchmark, and North)



Treebank