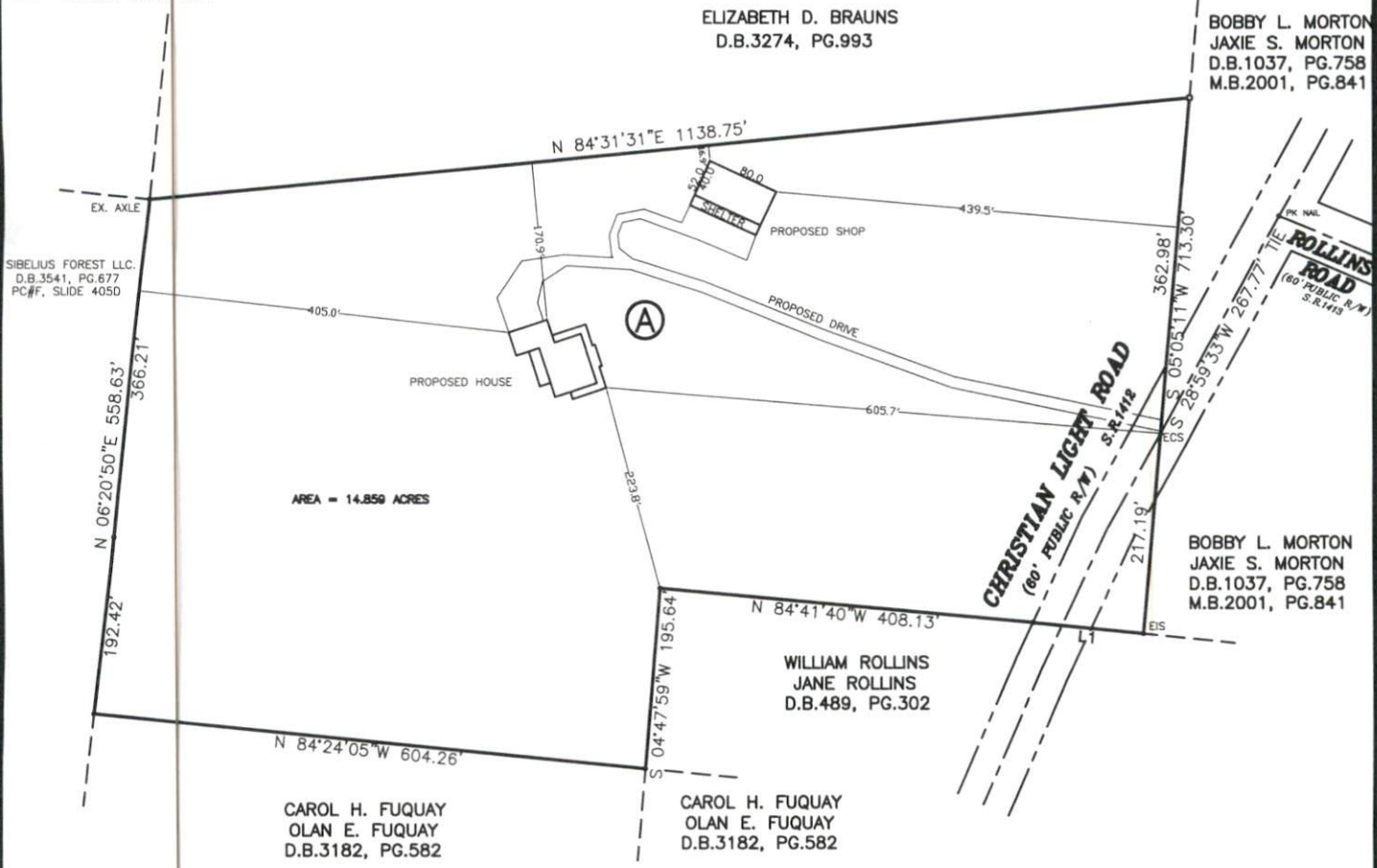


- LEGEND**
- NTS NOT TO SCALE
 - EIP EXISTING IRON PIPE
 - PP POWER POLE
 - W/M WATER METER
 - TB TELEPHONE BDX
 - IPS IRON PIPE SET
 - CP&L TRANSFORMER
 - CATV CABLE TV BOX
 - L POLE LIGHT POLE
 - OHPL OVERHEAD POWER LINE
 - F.E.S. FLARED END SECTION (PIPE)
 - RCP REINFORCED CONC. PIPE
 - B.O.C. BACK OF CURB
 - F.H. FIRE HYDRANT
 - C/O SEWER CLEAN OUT
 - EIS EXISTING IRON STAKE
 - M.H. MANHOLE
 - ECM EXISTING CONCRETE MONUMENT
 - P.K. PARKER KALON NAIL

Course	Bearing	Distance
L1	N 84°08'05" W	120.38'



NOTE: SHOWN IS LOT A OF
 HARRIET DAVIS DANIEL EST. S/D.
 REF: PB.2014 PG.305
 DB.4170, PG.575

AREA = 14.859 ACRES
 CHRISTIAN LIGHT ROAD

