

Treated 2x

10'

16" Over  
Hang

double  
stud

double  
sack

Door

12'

6'

6" CONCRETE

double  
LVL  
2x16x24

Door

12'

6'

double  
sack

double  
stud

CONCRETE

14"

CONCRETE

10"

Treated 2x

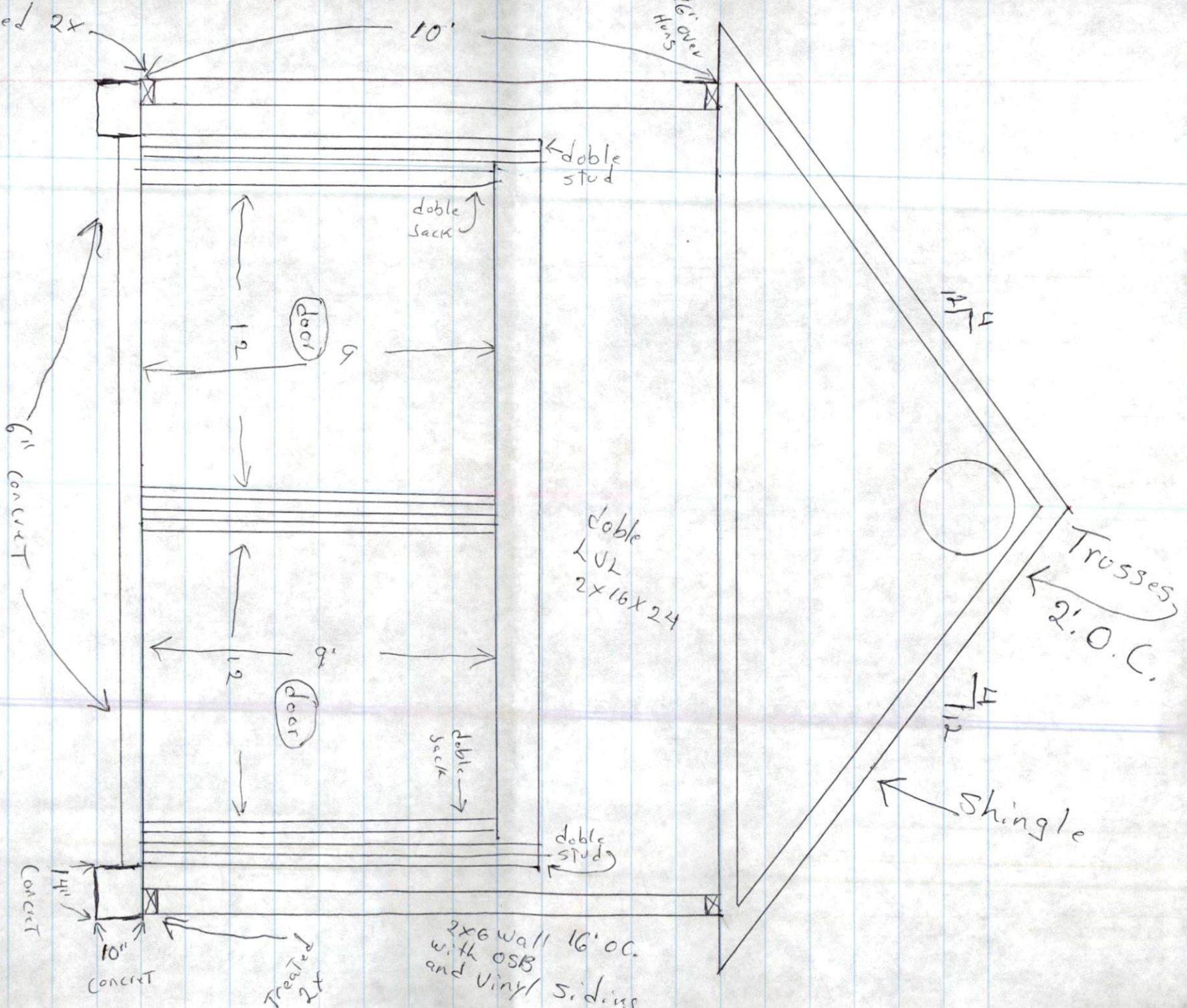
2x6 wall 16' OC.  
with OSB  
and vinyl siding

1 1/2"

Trusses  
2' O.C.

1 1/2"

Shingle



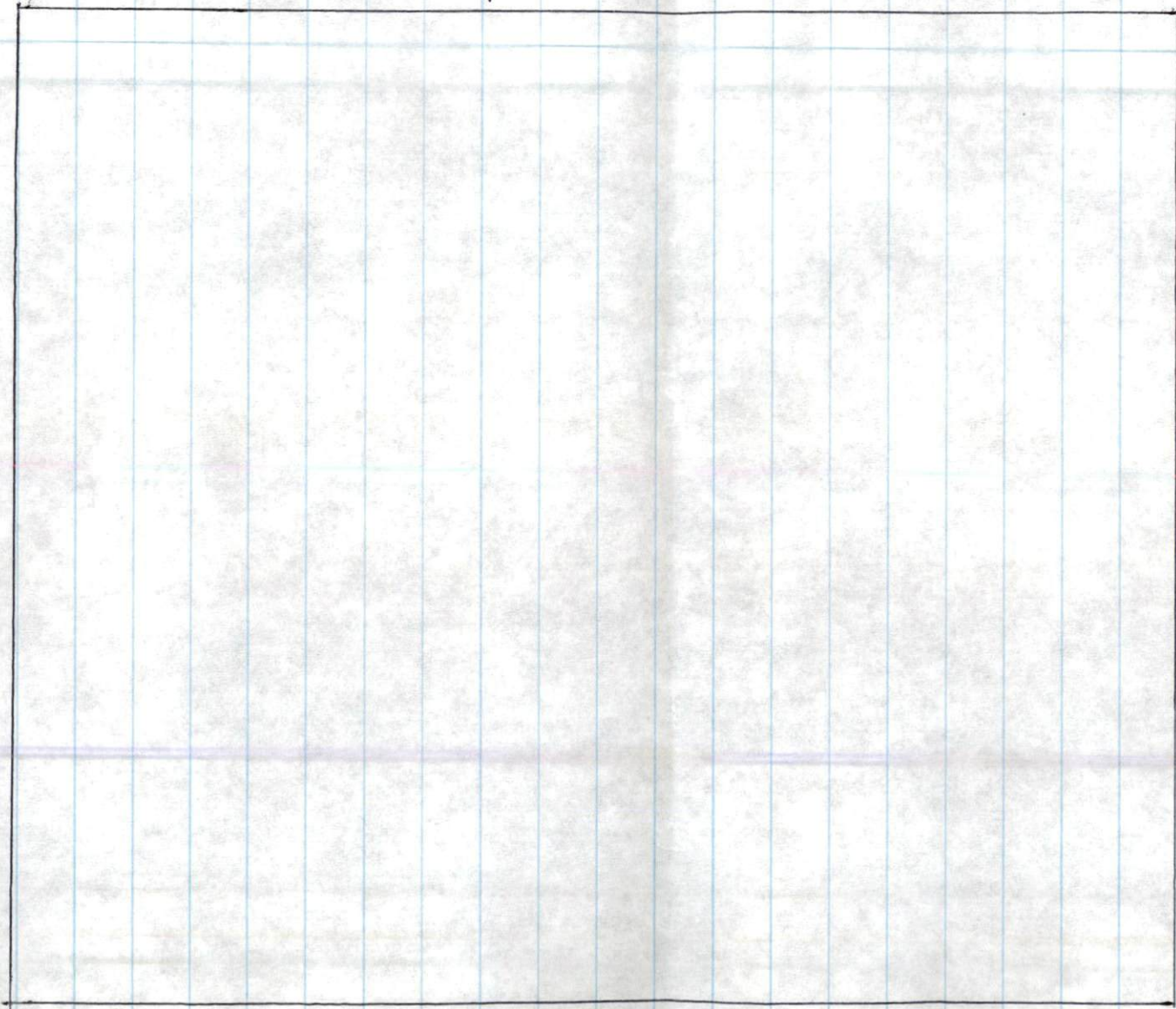


40

40

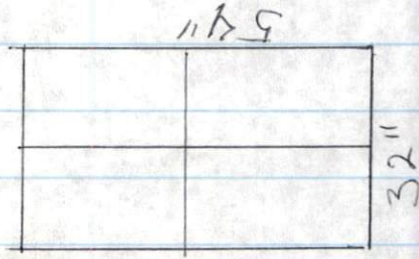
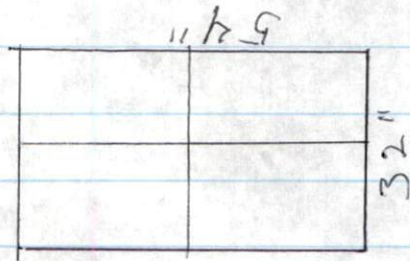
40

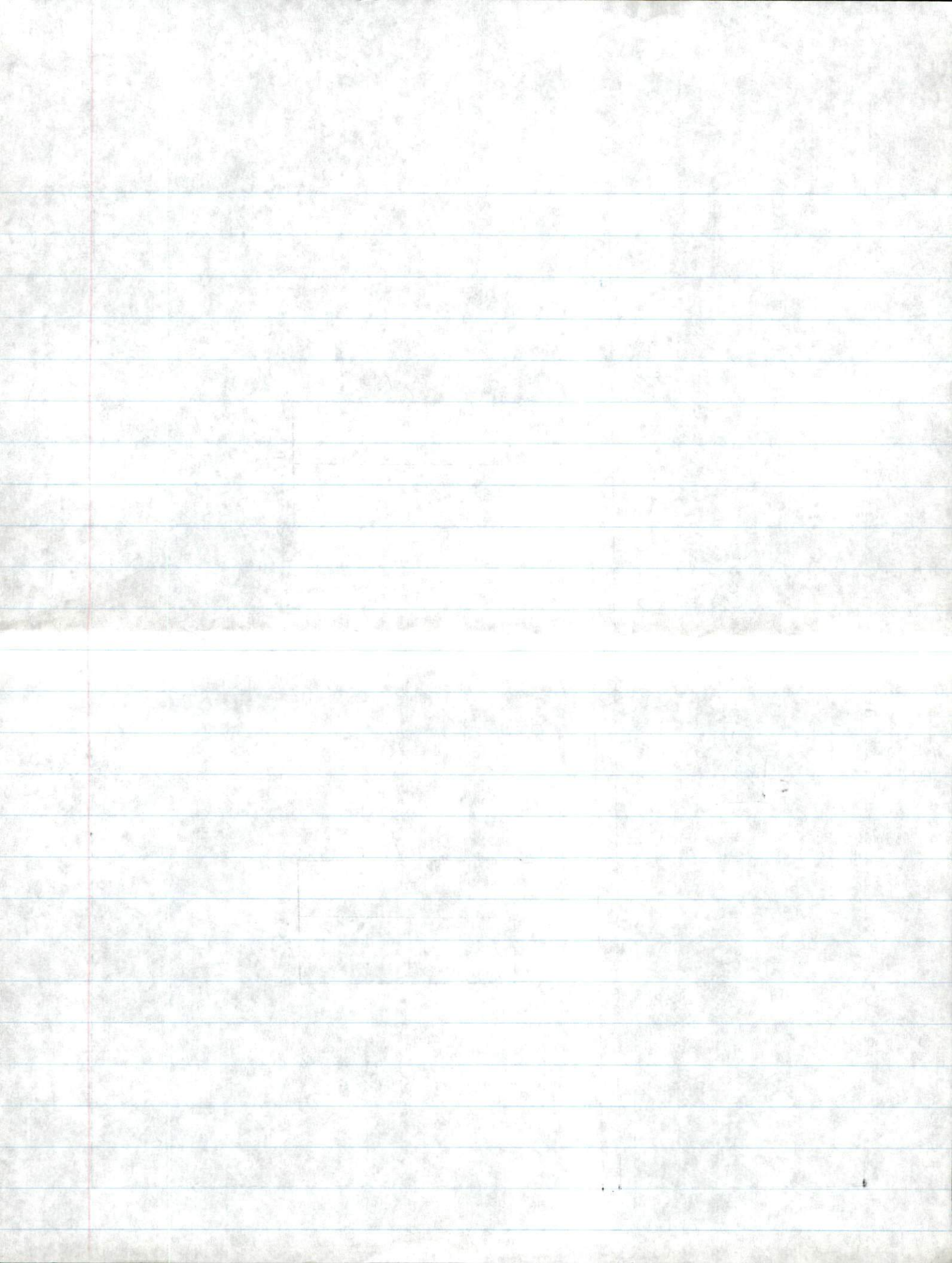
40



A  
12" Shingle roof

fac. board  
↙



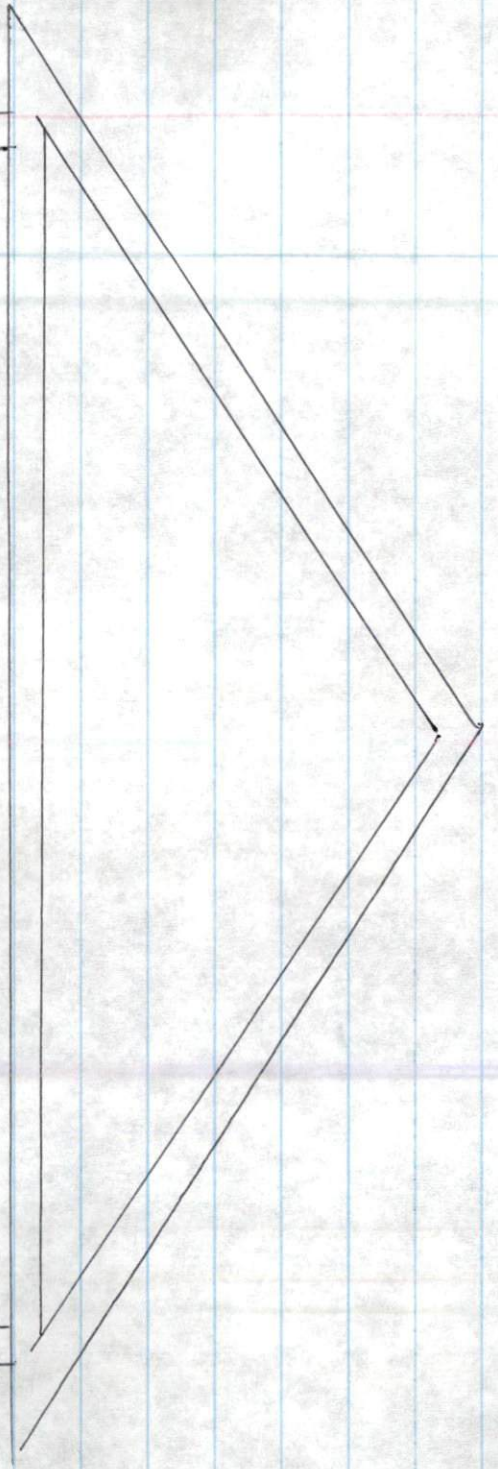


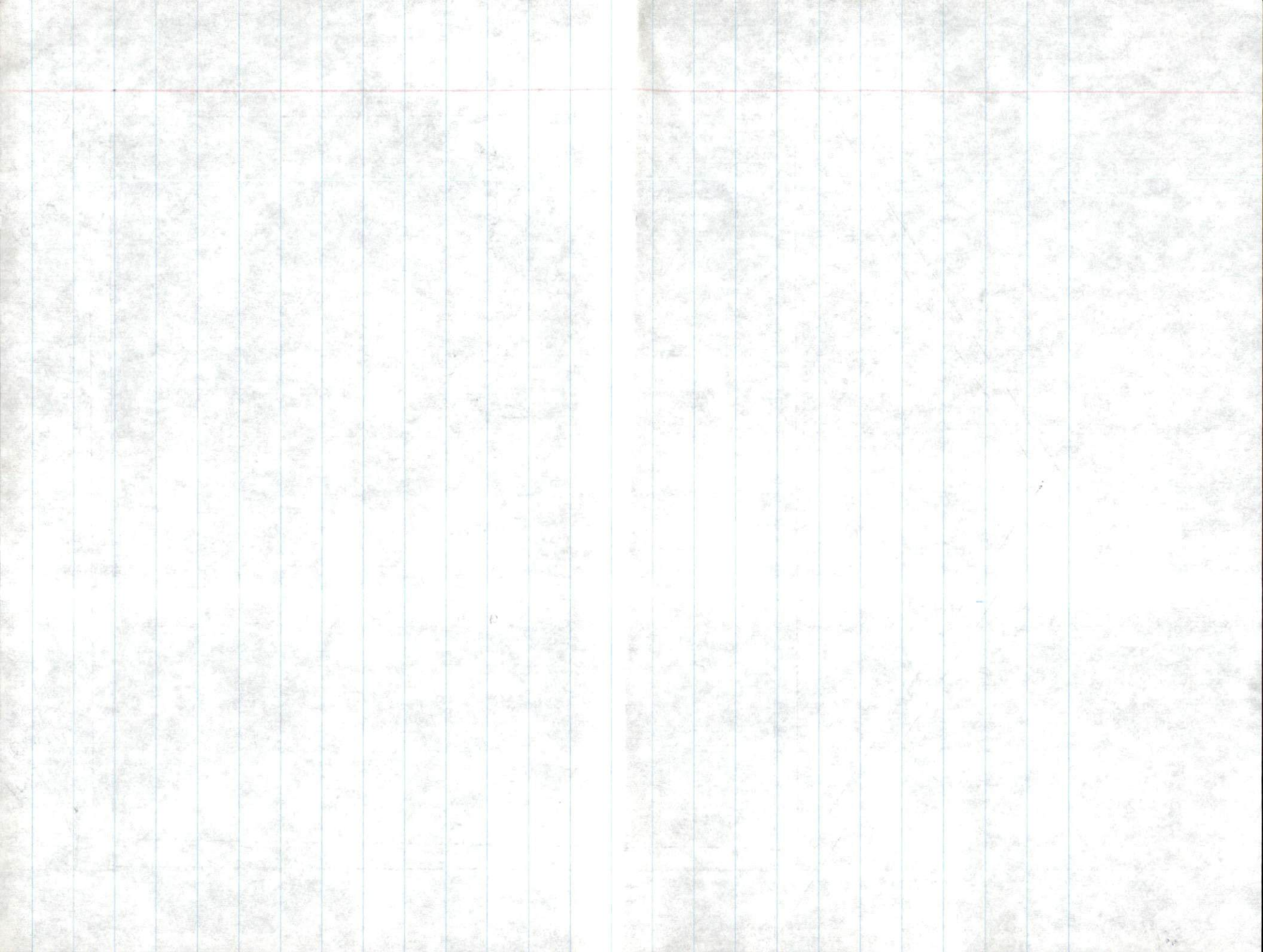
10x12  
concrete  
slab  
with  
anchors

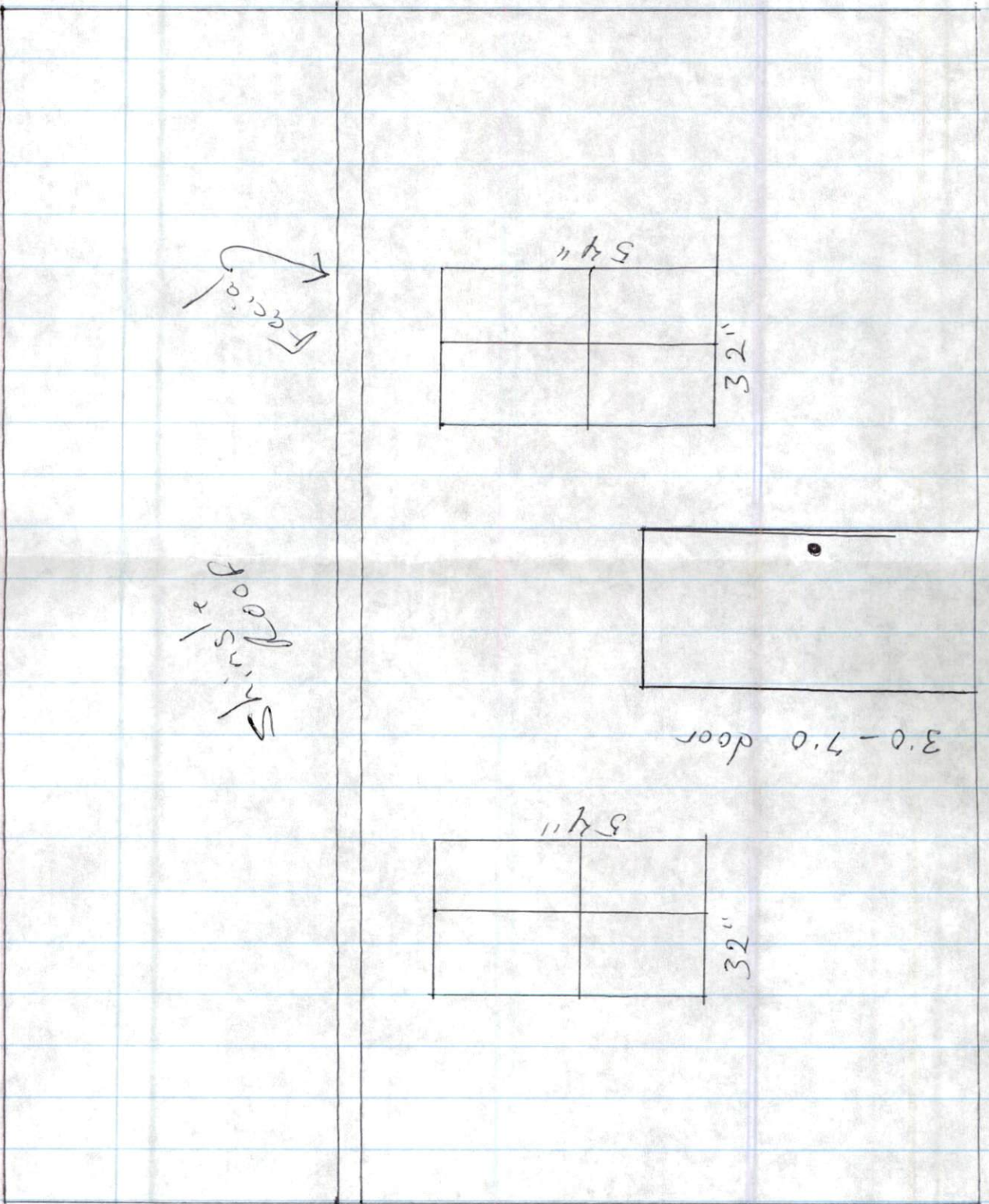
6" concrete floor

6" walls with 1/2x4x sheeting  
and vinyl siding

10x12  
concrete  
slab







Shirley

Fireplace

3.0 - 7.0 door

34"

32"

34"

32"



