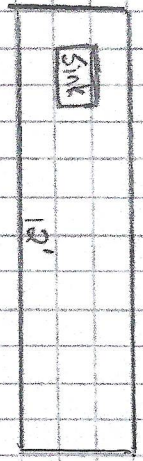
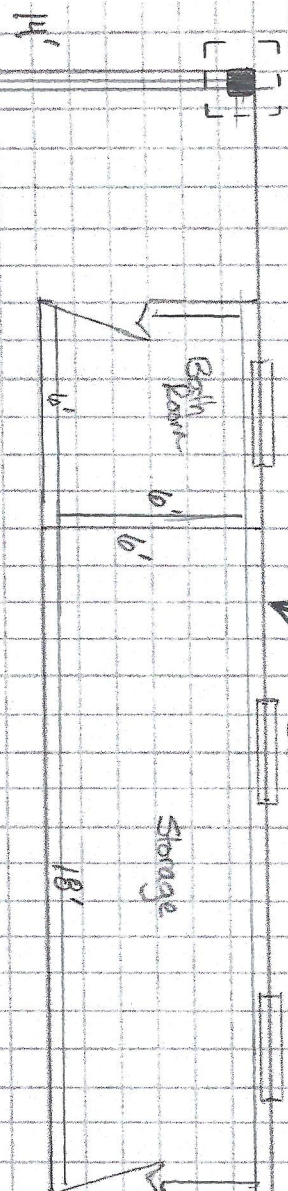


6/12 pitch

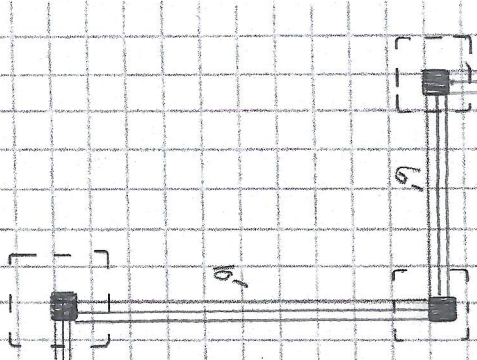
16" x 16" x 32" DEEP FORMING

8" CONCRETE w/ 6x6 POST

TO BE CONCRETE FILLED WITH SLAB



ENGINEERED TRUSSES 24" o/c



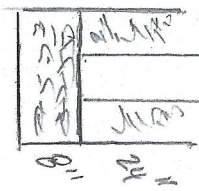
24'

2-PLY LVL BEAMS TRANS SPEC.

Doors 2 - 30' @ 10'

Windows 3 - 30' x 36'

FOOTING DETAIL



6x6 POST ON 16" x 16" x 8" FOOTING