



COMMENTS: \_\_\_\_\_

LANDSCAPE POSITIONS	GROUP	TEXTURES	.1955 LTAR	CONSISTENCE MOIST	WET
R-RIDGE	I	S-SAND	1.2 - 0.8	VFR-VERY FRIABLE	NS-NON-STICKY
S-SHOULDER SLOPE		LS-LOAMY SAND		FR-FRIABLE	SS-SLIGHTLY STICKY
L-LINEAR SLOPE	II	SL-SANDY LOAM	0.8 - 0.6	FI-FIRM	S-STICKY
FS-FOOT SLOPE		L-LOAM		VFI-VERY FIRM	VS-VERY STICKY
N-NOSE SLOPE	III	SI-SILT	0.6 - 0.3	EFI-EXTREMELY FIRM	NP-NON-PLASTIC
H-HEAD SLOPE		SIL-SILT LOAM		SP-SLIGHTLY STICKY	
CC-CONCLAVE SLOPE		CL-CLAY LOAM		P-PLASTIC	
CV-CONVEX SLOPE		SCL-SANDY CLAY LOAM		VP-VERY PLASTIC	
T-TERRACE	IV	SIC-SILTY CLAY	0.4 - 0.1		
FP-FLOOD PLAN		C-CLAY			
		SC-SANDY CLAY			

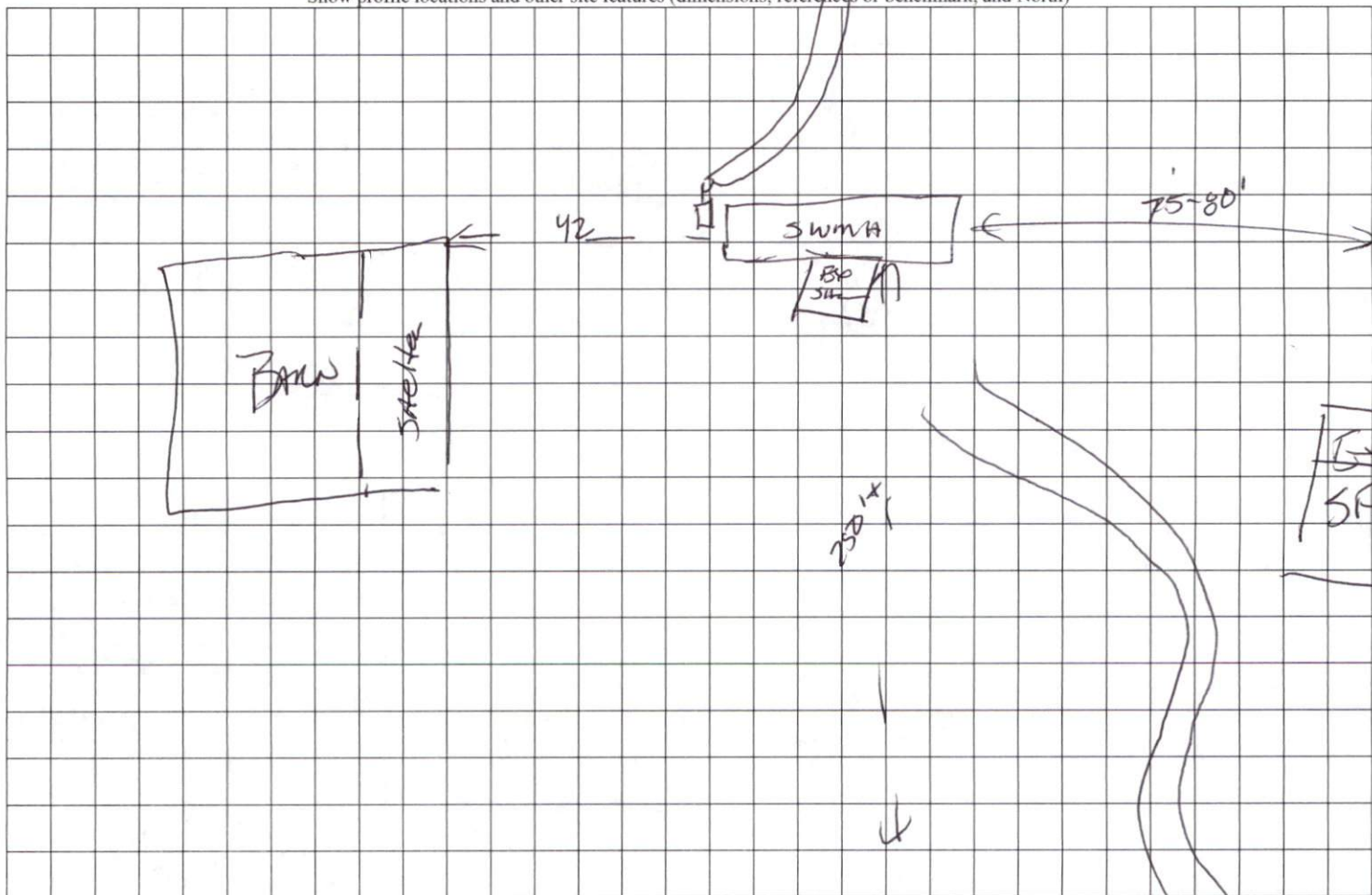
STRUCTURE

- SG-SINGLE GRAIN
- M- MASSIVE
- CR-CRUMB
- GR-GRANULAR
- SBK-SUBANGULAR BLOCKY
- ABK-ANGULAR BLOCKY
- PL-PLATY
- PR-PRISMATIC

MINERALOGY

- SLIGHTLY EXPANSIVE
- EXPANSIVE

Show profile locations and other site features (dimensions, references or benchmark, and North)



Jan 2011 Ennis Chapel RD



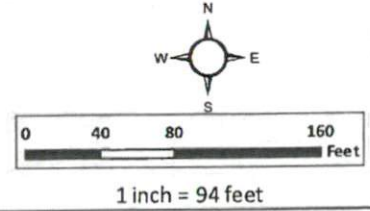
# Harnett GIS

NOT FOR LEGAL USE



Harnett County GIS

- |                               |                    |                     |                 |
|-------------------------------|--------------------|---------------------|-----------------|
| Surrounding County Boundaries | Airport            | Roads               | Cape Fear River |
| City Limits                   | <b>Major Roads</b> | <b>Mile_Markers</b> |                 |
| County Boundary               | Interstate         | Mile_Markers        |                 |
| Address Numbers               | NC                 | Railroad            |                 |
|                               | US                 | Parcels             |                 |



GIS/E-911 Addressing  
December 30, 2022